

Troubleshooting Guide Subindex

No Video Recording

No Video Playback

Wide Noise Band

Playback Snow/Noise

Dead Or Malfunction

Distorted Playback (Periodic Noise Bar)

No Normal Audio Recording (Without Hi-Fi Audio)

No Normal Audio Recording (Without Hi-Fi Audio)

No Normal Audio Recording (With Hi-Fi Audio)

No Normal Audio Playback (Without Hi-Fi Audio)

No Normal Audio Playback (With Hi-Fi Audio)

No Hi-Fi Audio Recording

No Hi-Fi Audio Playback

Power Supply Section

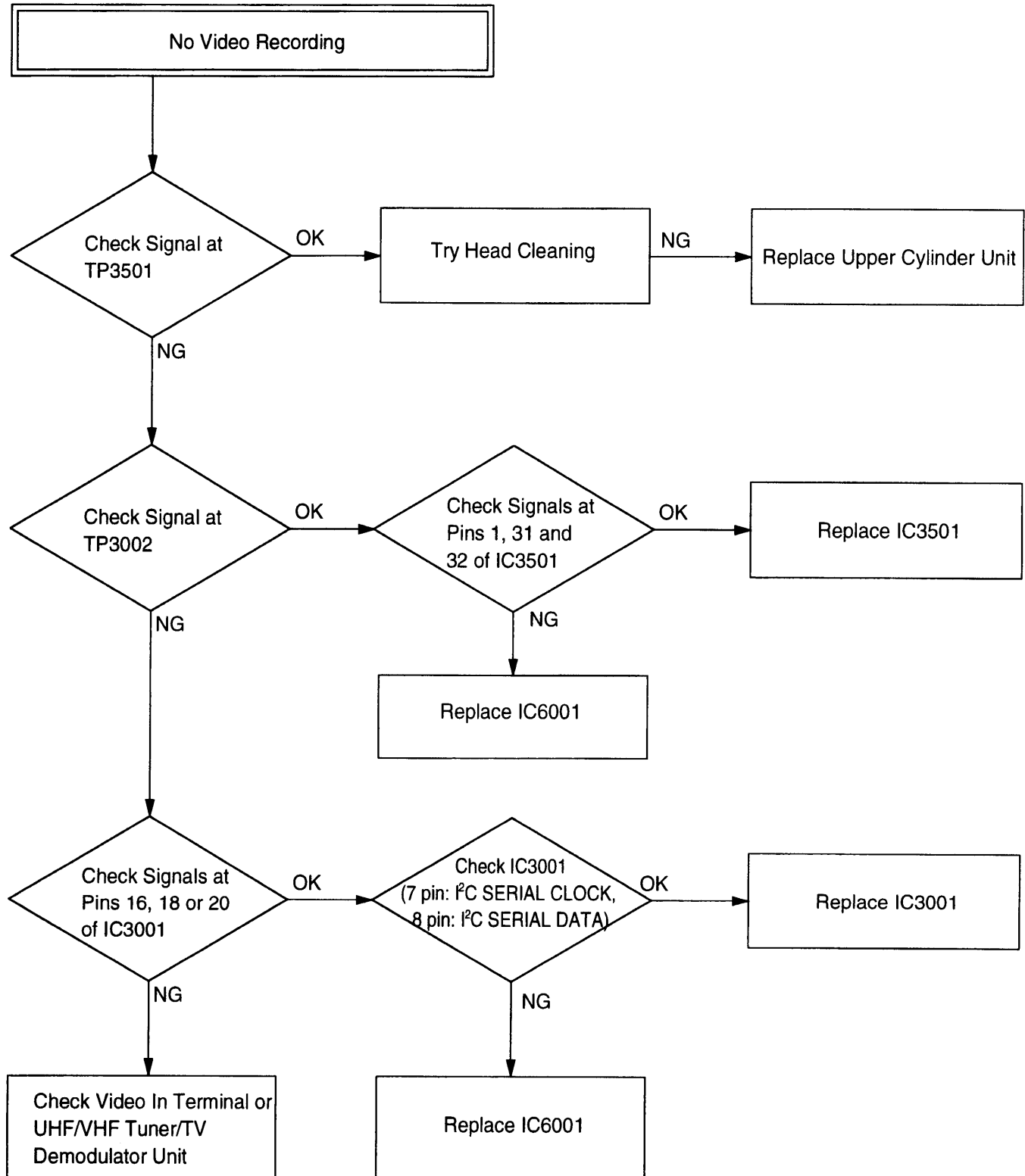
Voltage and Resistance of Power Line

CM Advance Section

Movie Advance Section

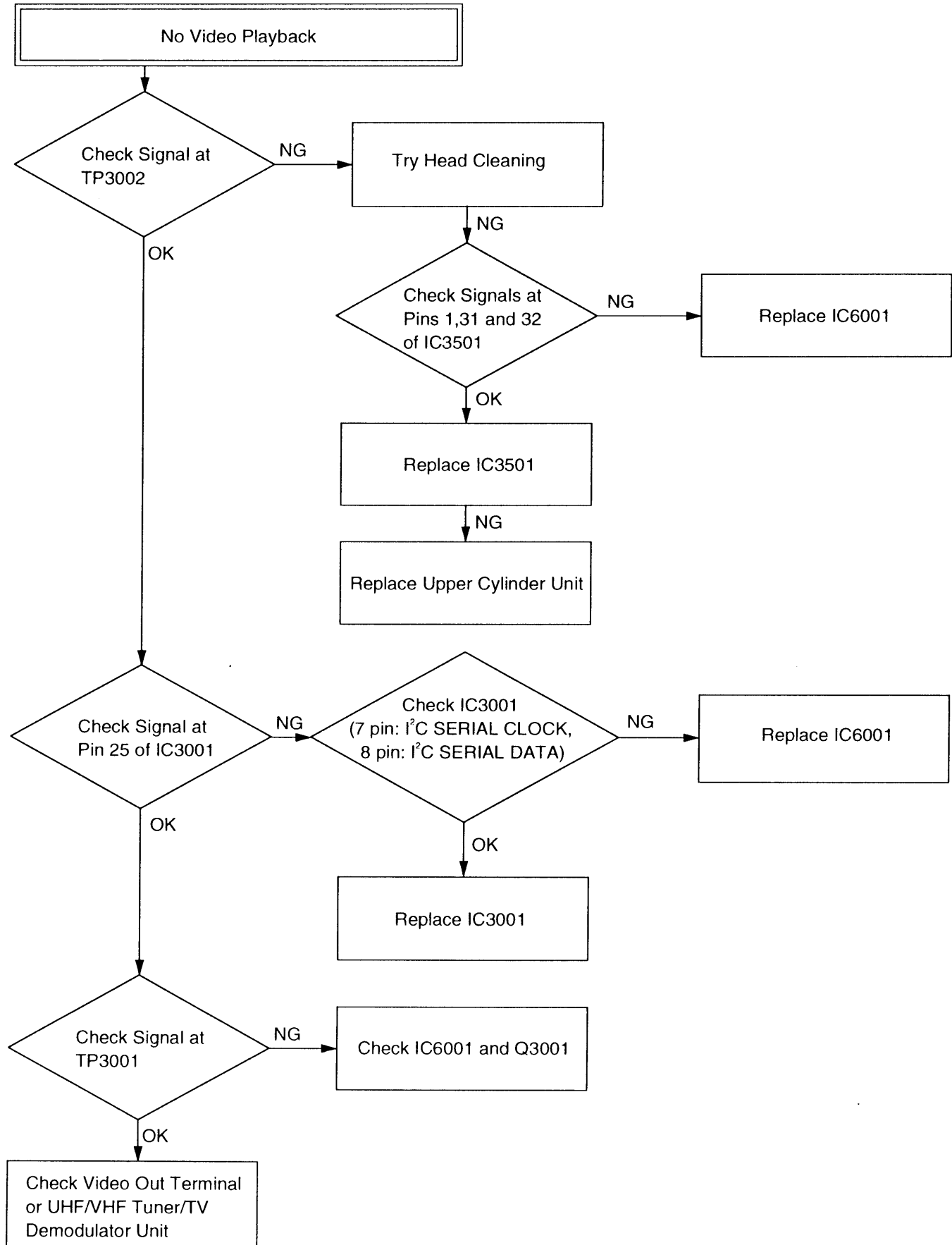
TROUBLESHOOTING GUIDES (Continued)

Video Section



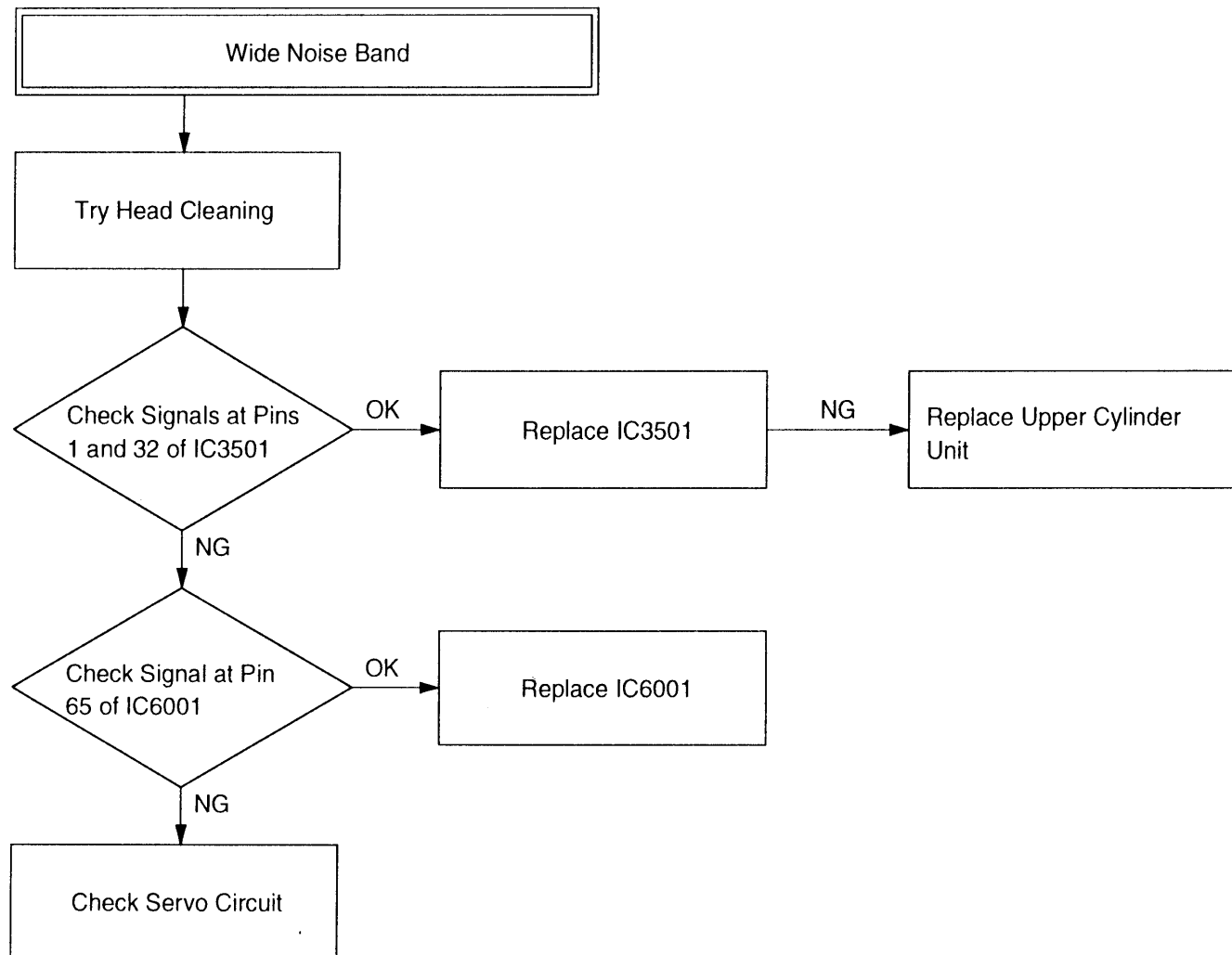
TROUBLESHOOTING GUIDES (Continued)

Video Section



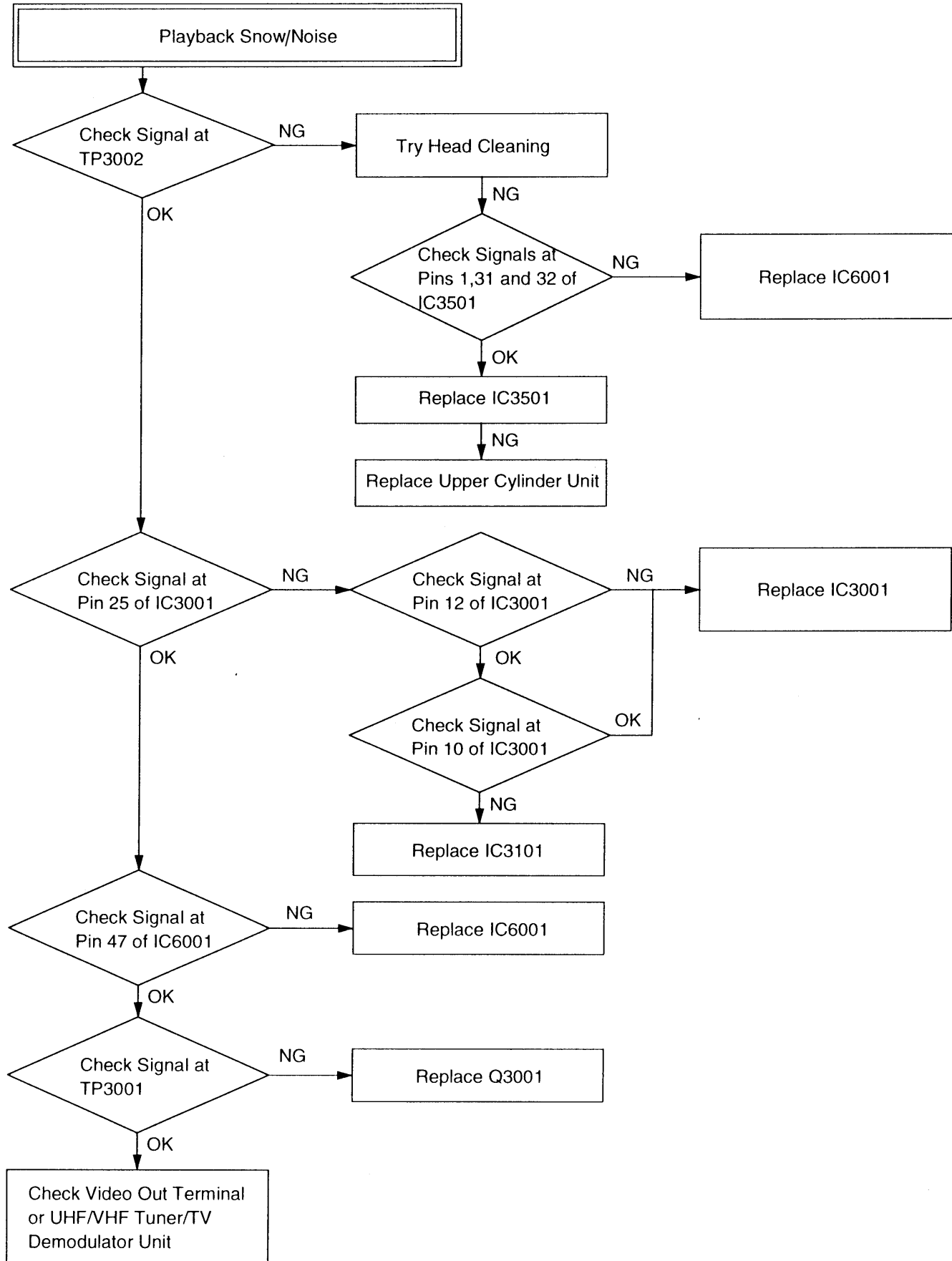
TROUBLESHOOTING GUIDES (Continued)

Video Section



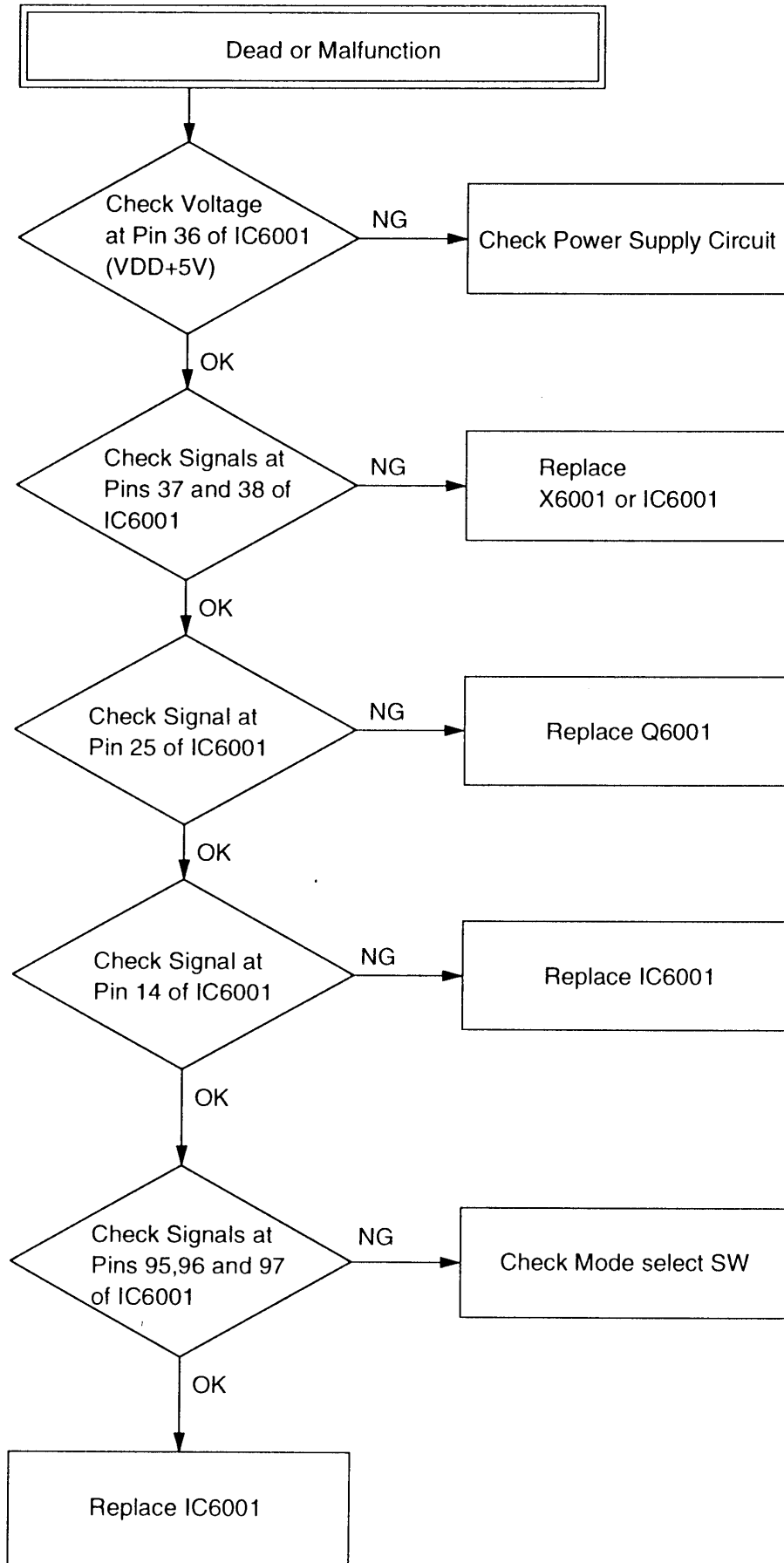
TROUBLESHOOTING GUIDES (Continued)

Video Section



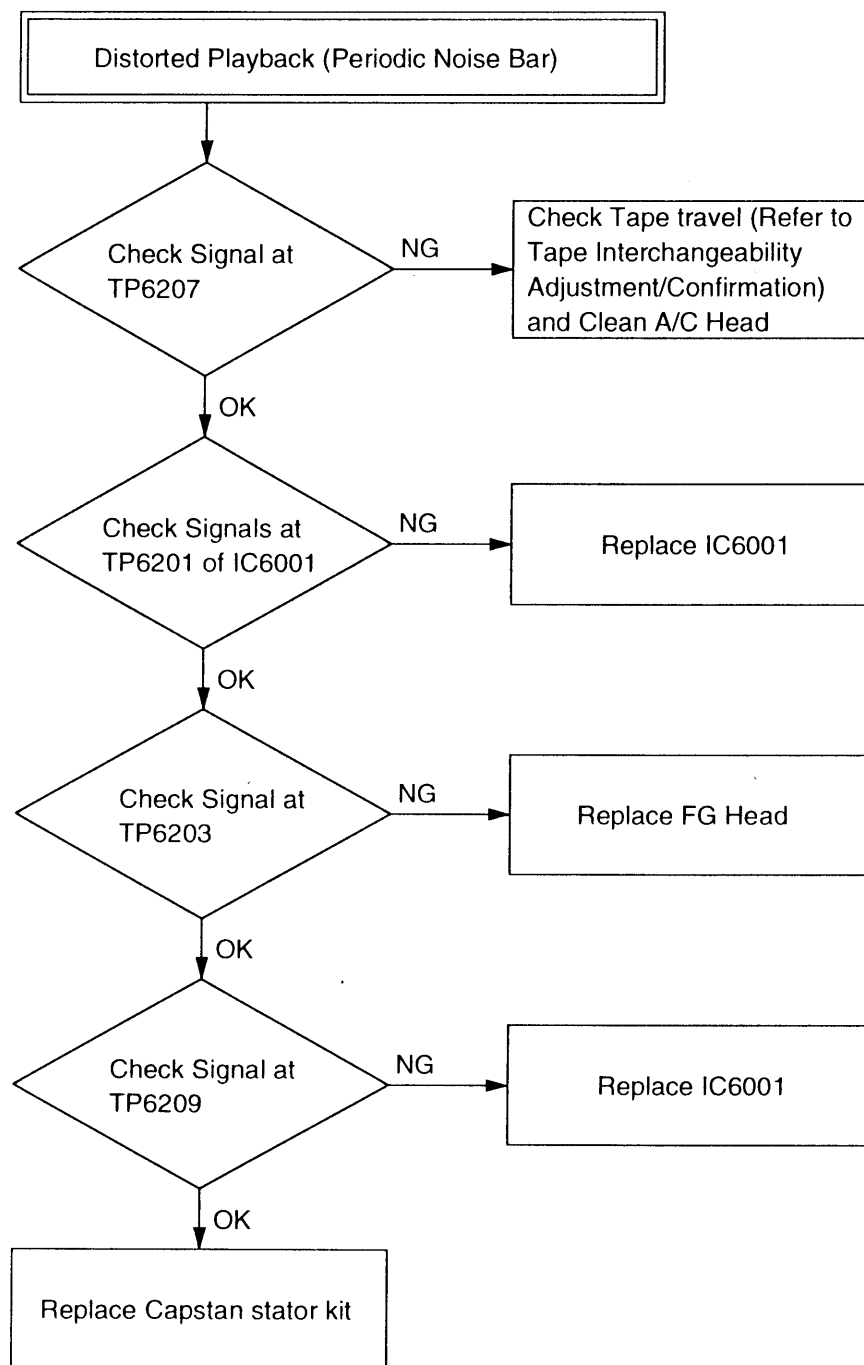
TROUBLESHOOTING GUIDES (Continued)

System Control & Servo Section



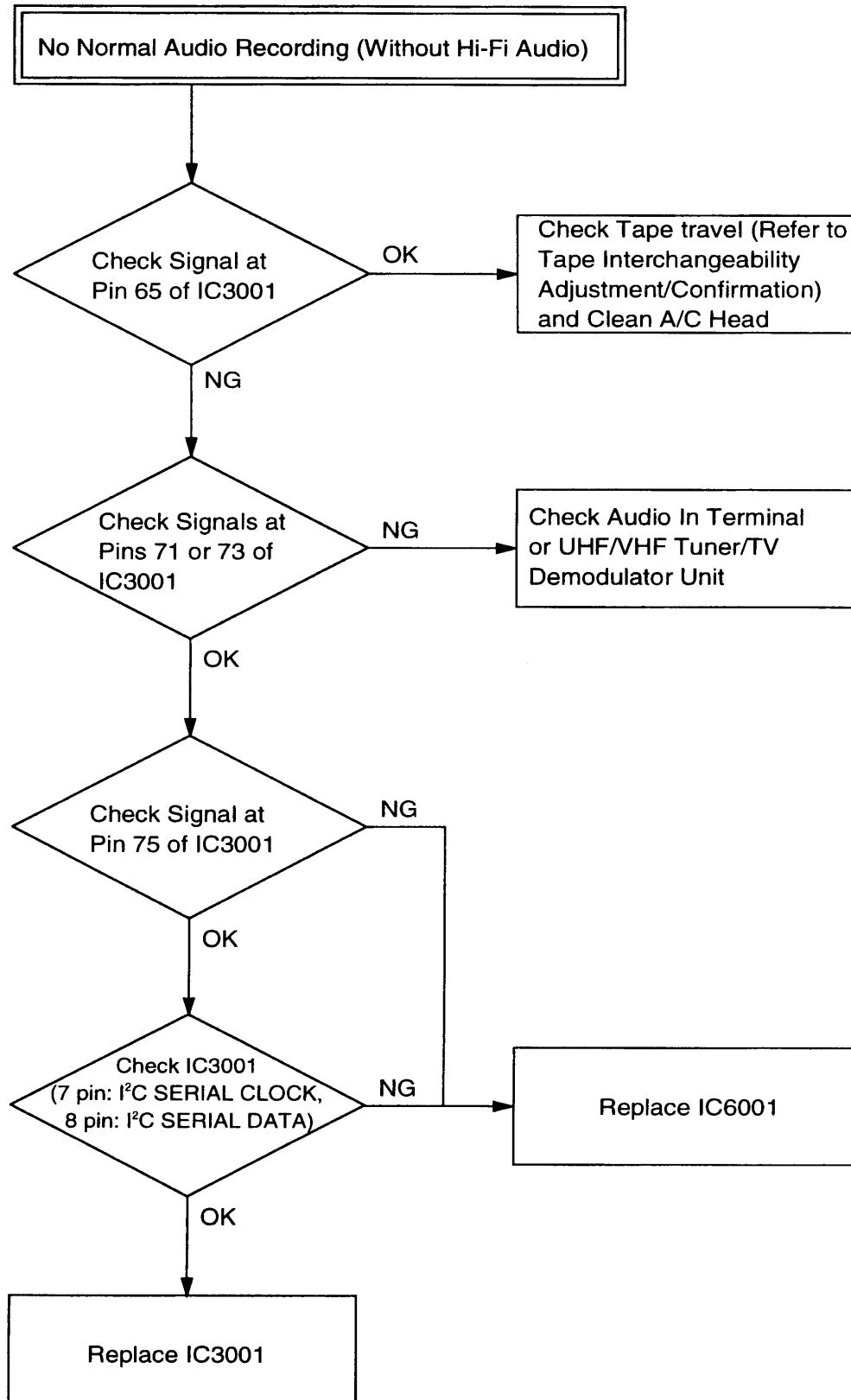
TROUBLESHOOTING GUIDES (Continued)

System Control & Servo Section



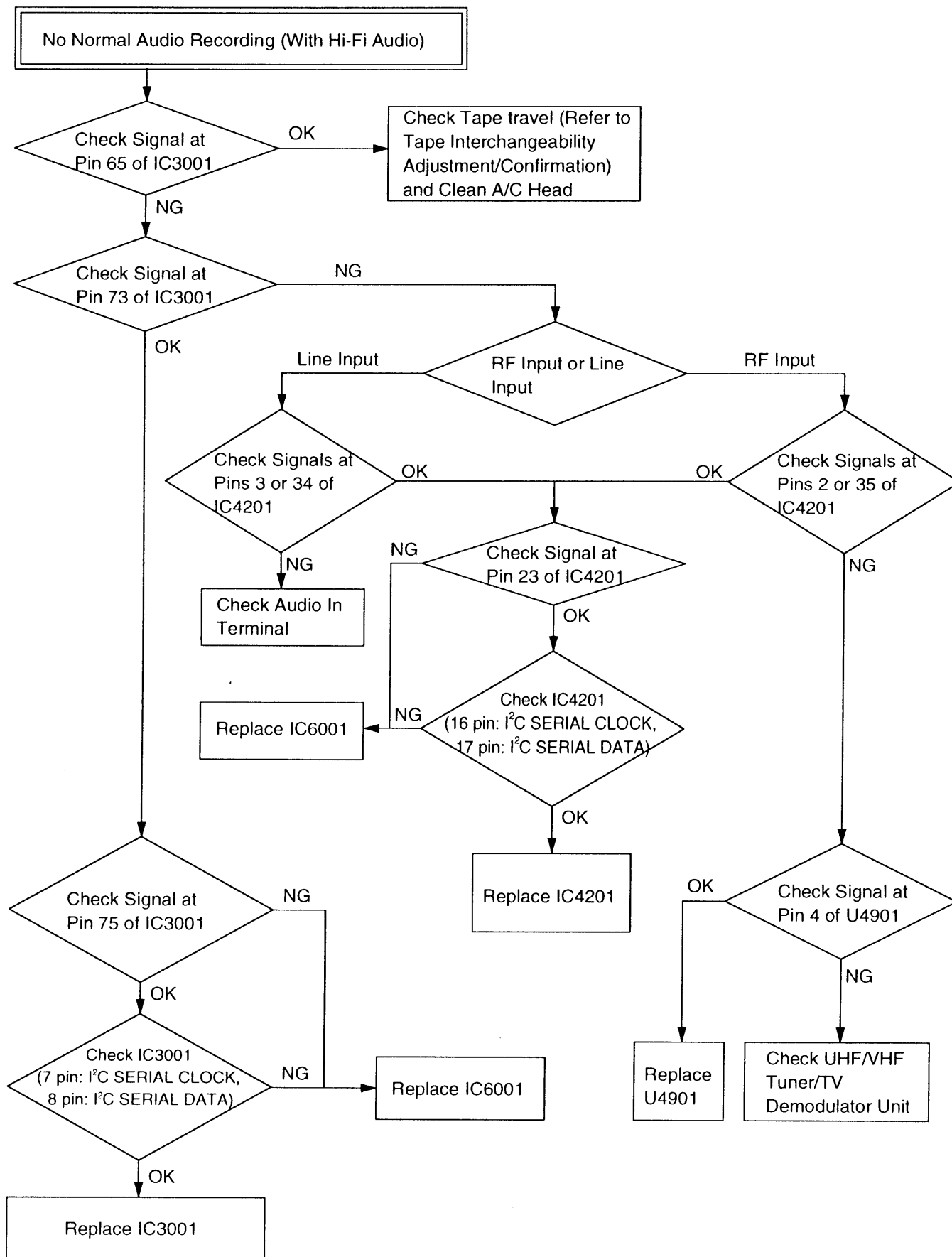
TROUBLESHOOTING GUIDES (Continued)

Audio Section



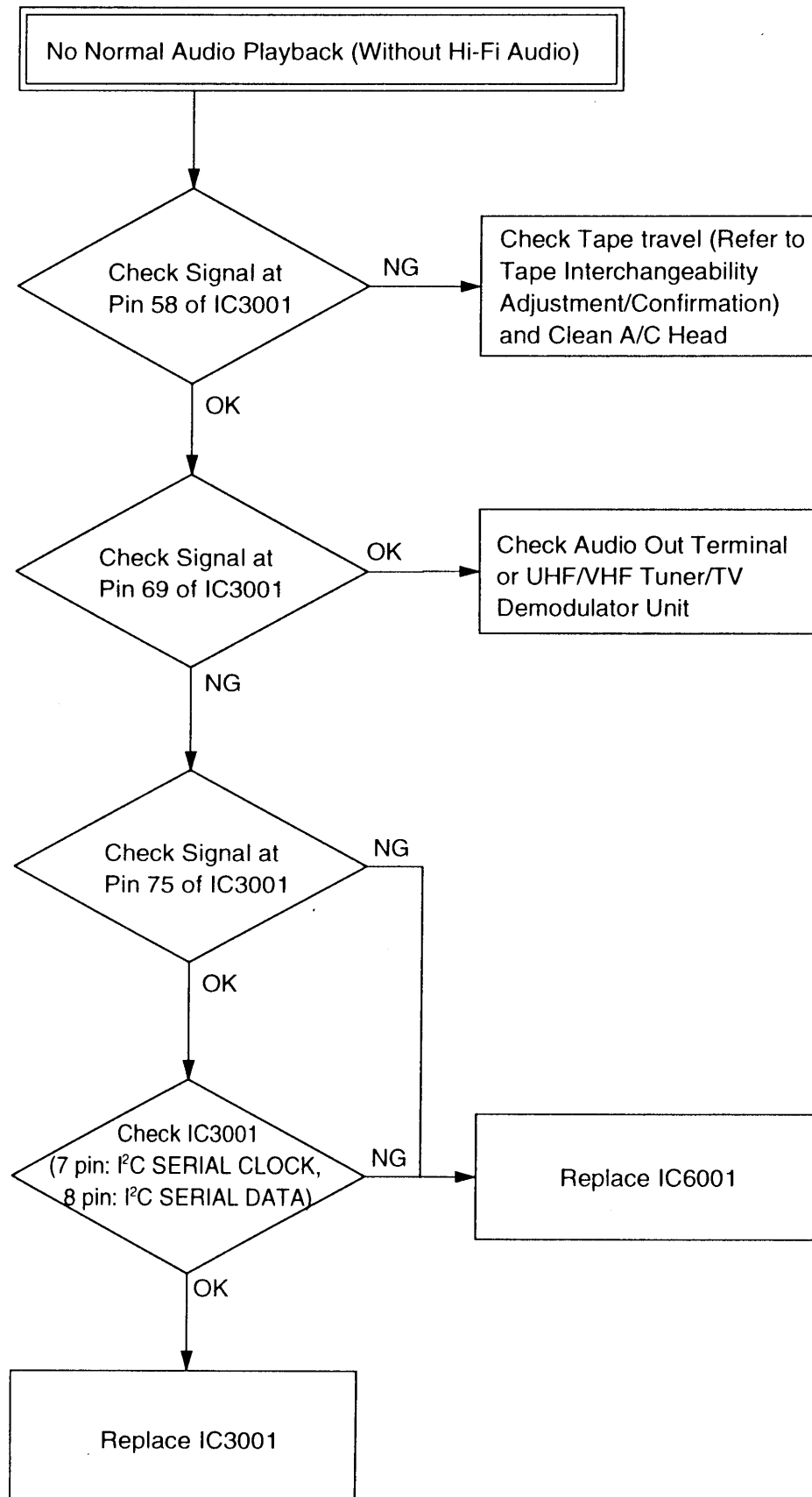
TROUBLESHOOTING GUIDES (Continued)

Audio Section



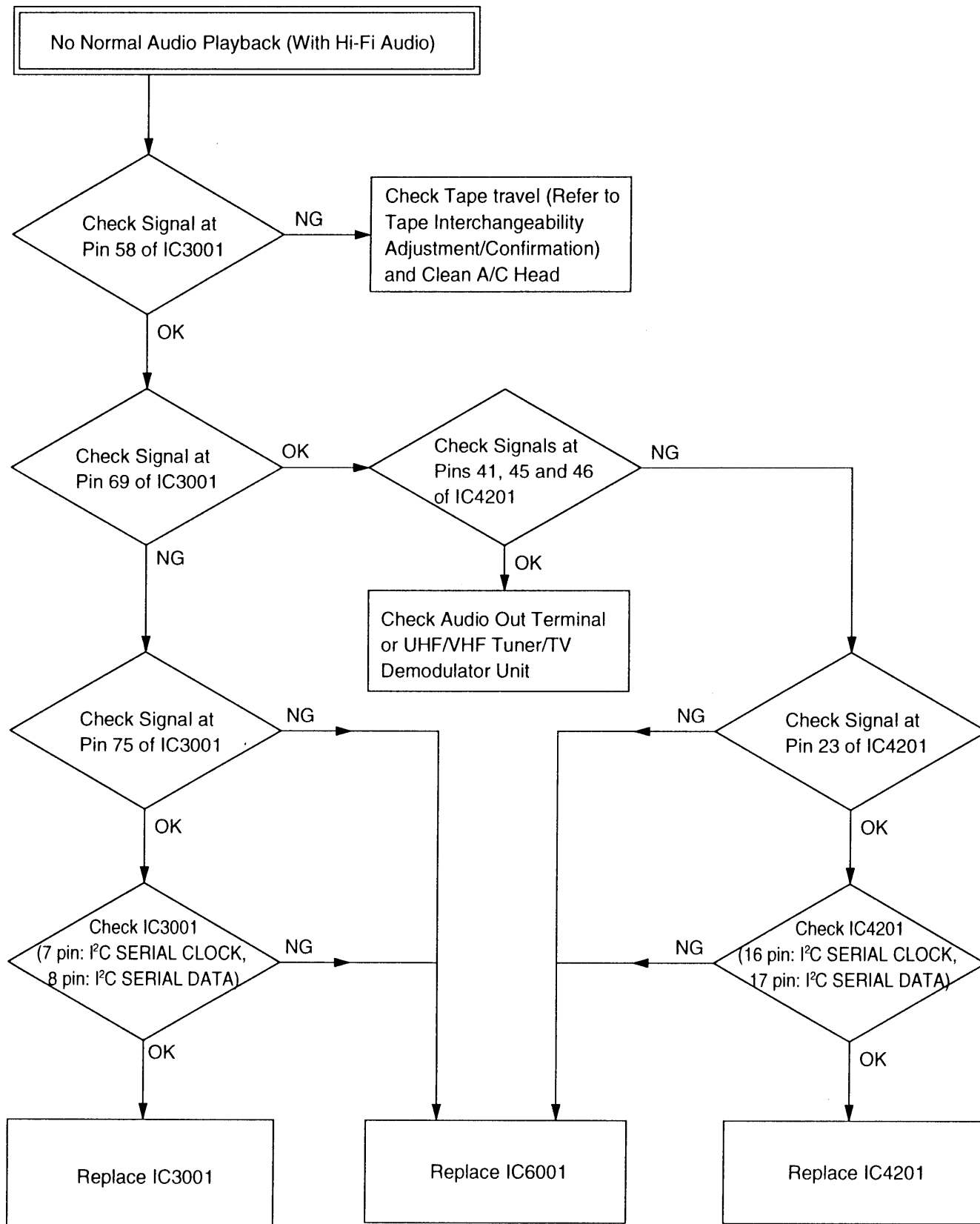
TROUBLESHOOTING GUIDES (Continued)

Audio Section



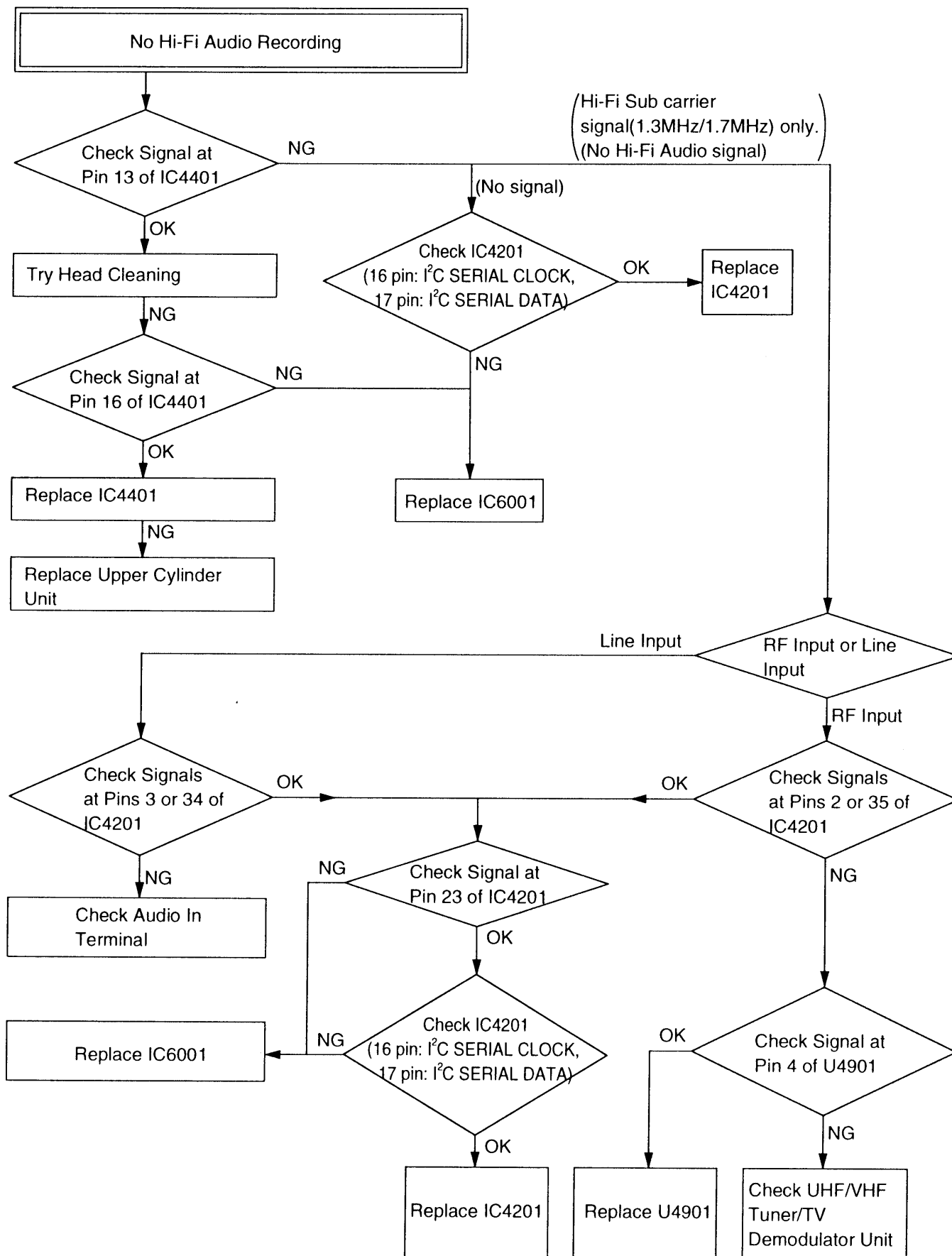
TROUBLESHOOTING GUIDES (Continued)

Audio Section



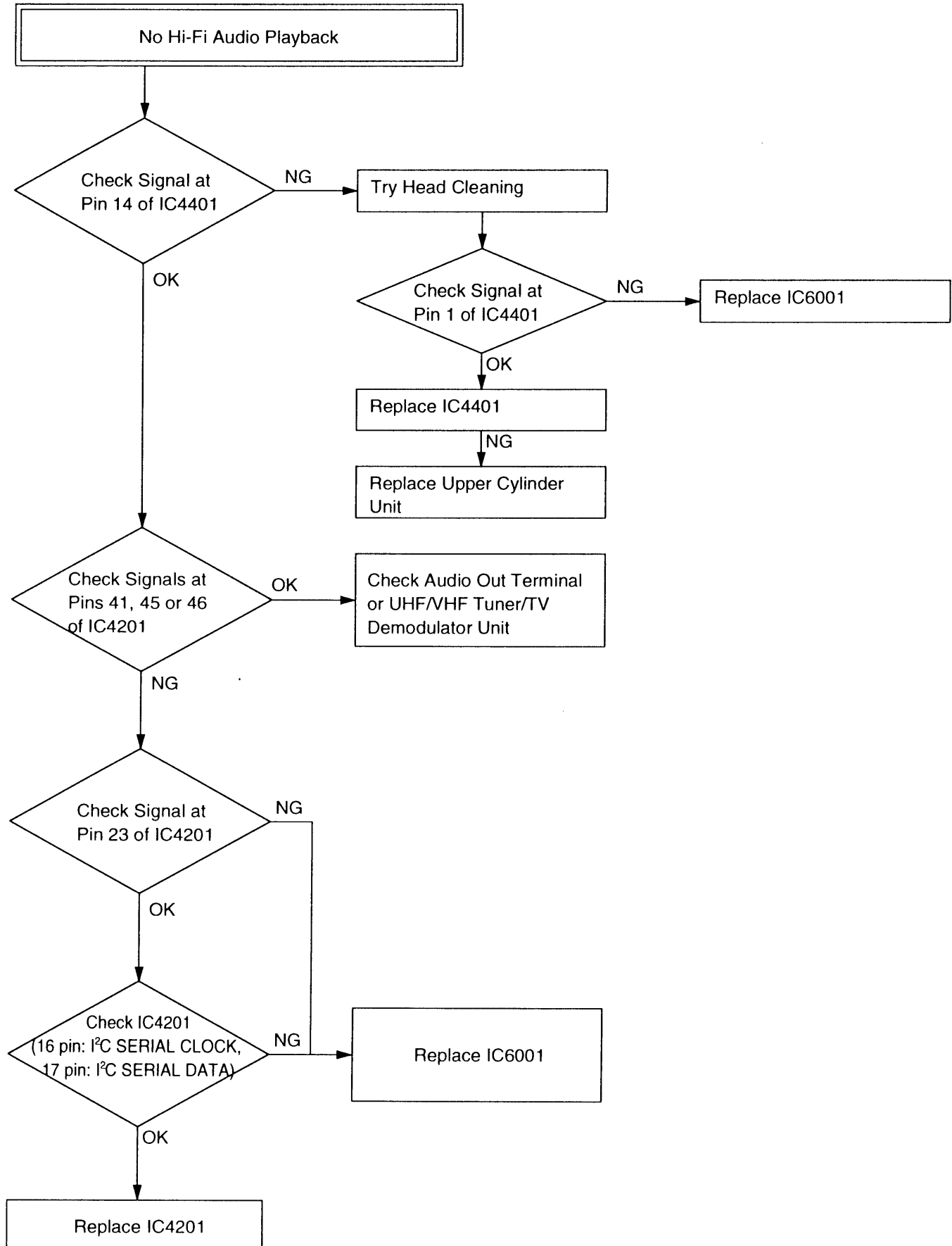
TROUBLESHOOTING GUIDES (Continued)

Hi-Fi Audio Section



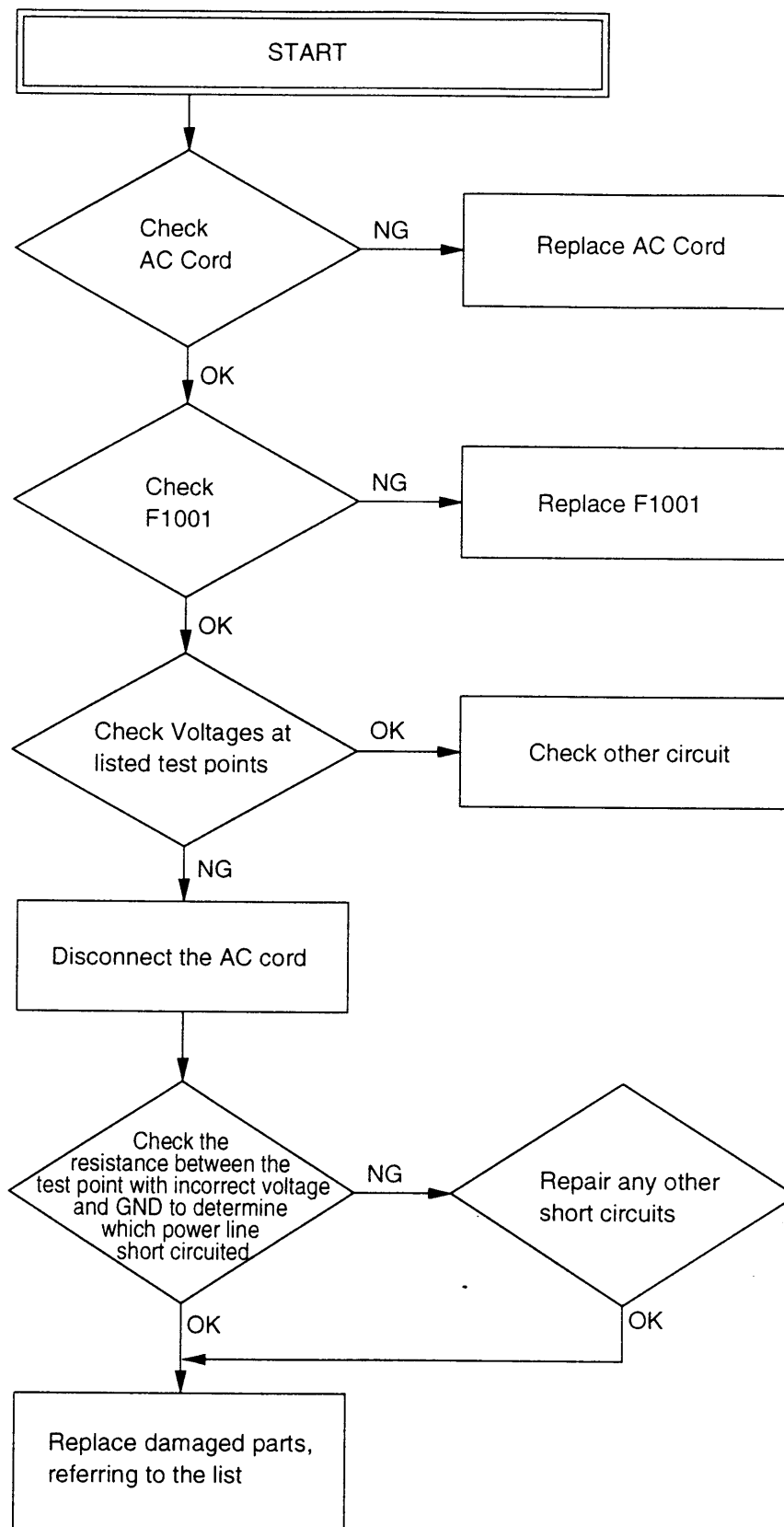
TROUBLESHOOTING GUIDES (Continued)

Hi-Fi Audio Section



TROUBLESHOOTING GUIDES (Continued)

Power Supply Section



TROUBLESHOOTING GUIDES (Continued)**Voltage and Resistance of Power Line**

Test Points (Main C.B.A.)	Voltage	Resistance
TP1002 (DC+33V)	33.0V	More than 500 ohm
TP1003 (DC+14V)	15.0V	More than 30 ohm
TP1004 (DC-30V)	-30.7V	More than 500 ohm
TP1005 (DC+5V)	5.2V	More than 25 ohm
TP1006 (F+)	-25.0V	More than 1k ohm
TV1007 (F-)	-20.0V	More than 1k ohm
TP1008 (Power Down (L))	5.2V	More than 500 ohm
TP1058 (DC+12V)	12.0V	More than 30 ohm

VOLTAGE: STOP mode under normal conditions.

RESISTANCE: Between Test points and GND with power off under normal conditions.

Note: The Voltages and Resistance listed are approximate.

When power line is short circuited, check the following parts. Replace if necessary.

(1). SHORT CIRCUIT AND REPLACEMENT PARTS ON POWER LINE.

	CONDITION OF SHORT CIRCUIT	DAMAGEABLE PARTS BY SHORT CIRCUIT
(1)	5V ➡ GND	*PR1001, *D1008, Q1005, Q1053, Q1056
(2)	33V ➡ GND	*D1005, *R1010
(3)	14V ➡ GND 12V ➡ GND	D1006, *D1015, Q1051, *Q1052 D1051, D1052, D1053, *PR1002
(4)	-30V ➡ GND	*R1011, *D1007, *R1024
(5)	33V ➡ 14V	D1006, *D1015, Q1051, *Q1052 D1051, D1052, D1053, *PR1002
(6)	-30V ➡ 5V	REPLACE THE ALL OF PARTS OF (1) AND (4)
(7)	14V ➡ 12V	*Q1051, *Q1052, D1051, D1052, D1053, *PR1002
(8)	33V ➡ POWER DOWN(L)	*Q1005, D1005, R1010

*NOTE1: When a short circuit occurs supplying the Power for a long time will cause the fuse to blow.

*NOTE2: Parts with * mark are the most susceptible to damage in case of short circuit. Please check them first.

(2). IN CASE OF FUSE(F1001) BLOW.

Replace Parts F1001, Q1001, Q1002, D1001(very rarely has problems), C1016, C1028, D1015.

Cause ➡ It may be caused by a short circuit of 5V or 14V.

(3). JUST AFTER TURNING POWER ON, ABNORMAL NOISE CAN BE HEARD FROM POWER SUPPLY CIRCUIT.

Replace Parts D1015, D1008, D1007, R1011, C1016.

Cause ➡ It may be caused by a short circuit of 5V, -30V, 14V.

In this condition, supplying the Power for a long time will causes the fuse to blow.

TROUBLESHOOTING GUIDES (Continued)

CM Advance Section

HOW TO CONFIRM IF CM ADVANCE CIRCUIT IS WORKING.

Record any broadcast including commercial over 30 seconds. Then, as recording continues, proceed with all troubleshooting of CM Advance Circuit.

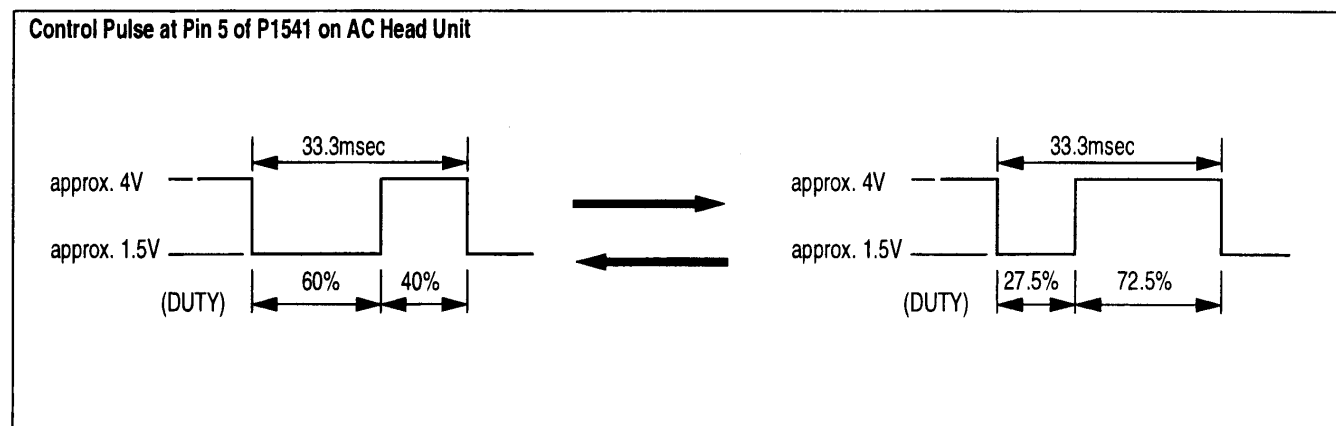
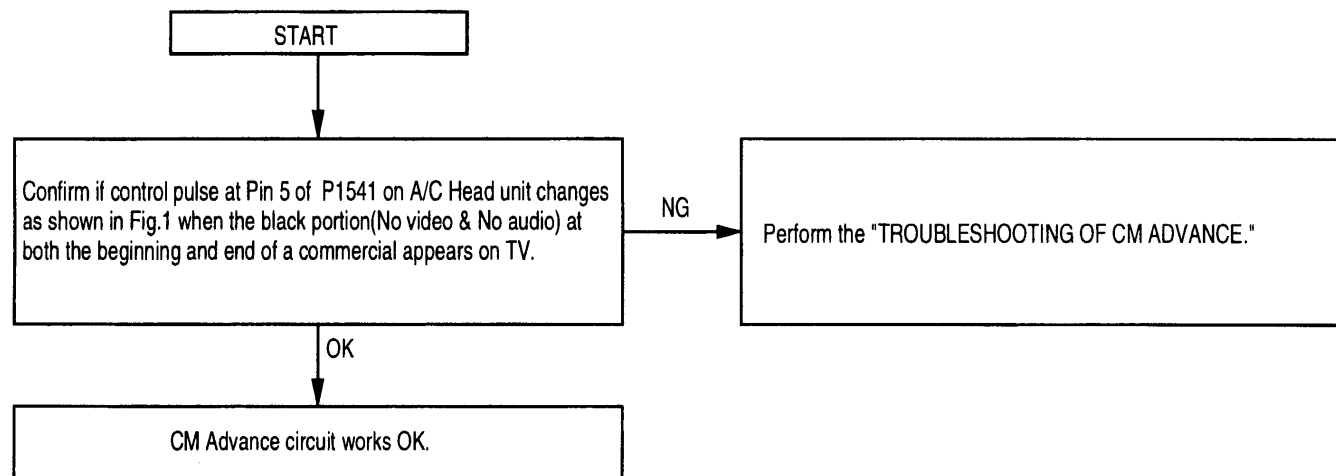


Fig.1

TROUBLESHOOTING GUIDES (Continued)

TROUBLESHOOTING OF CM ADVANCE

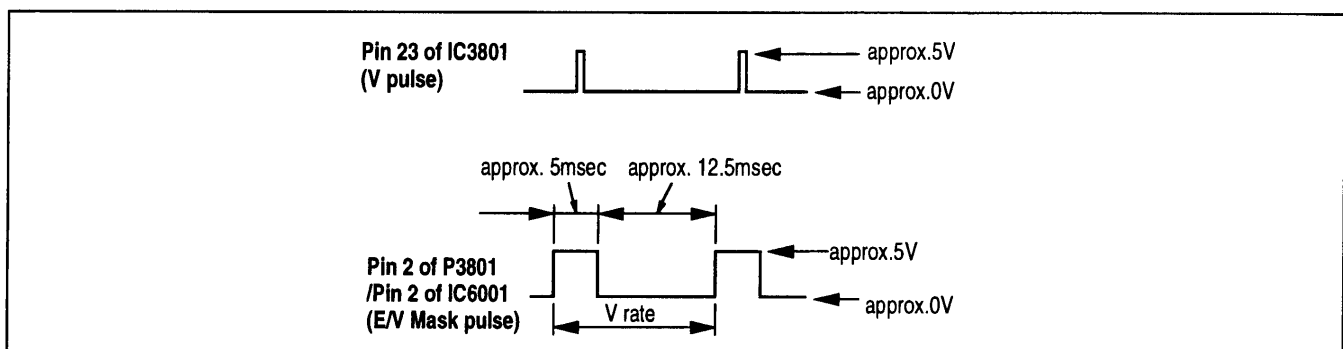
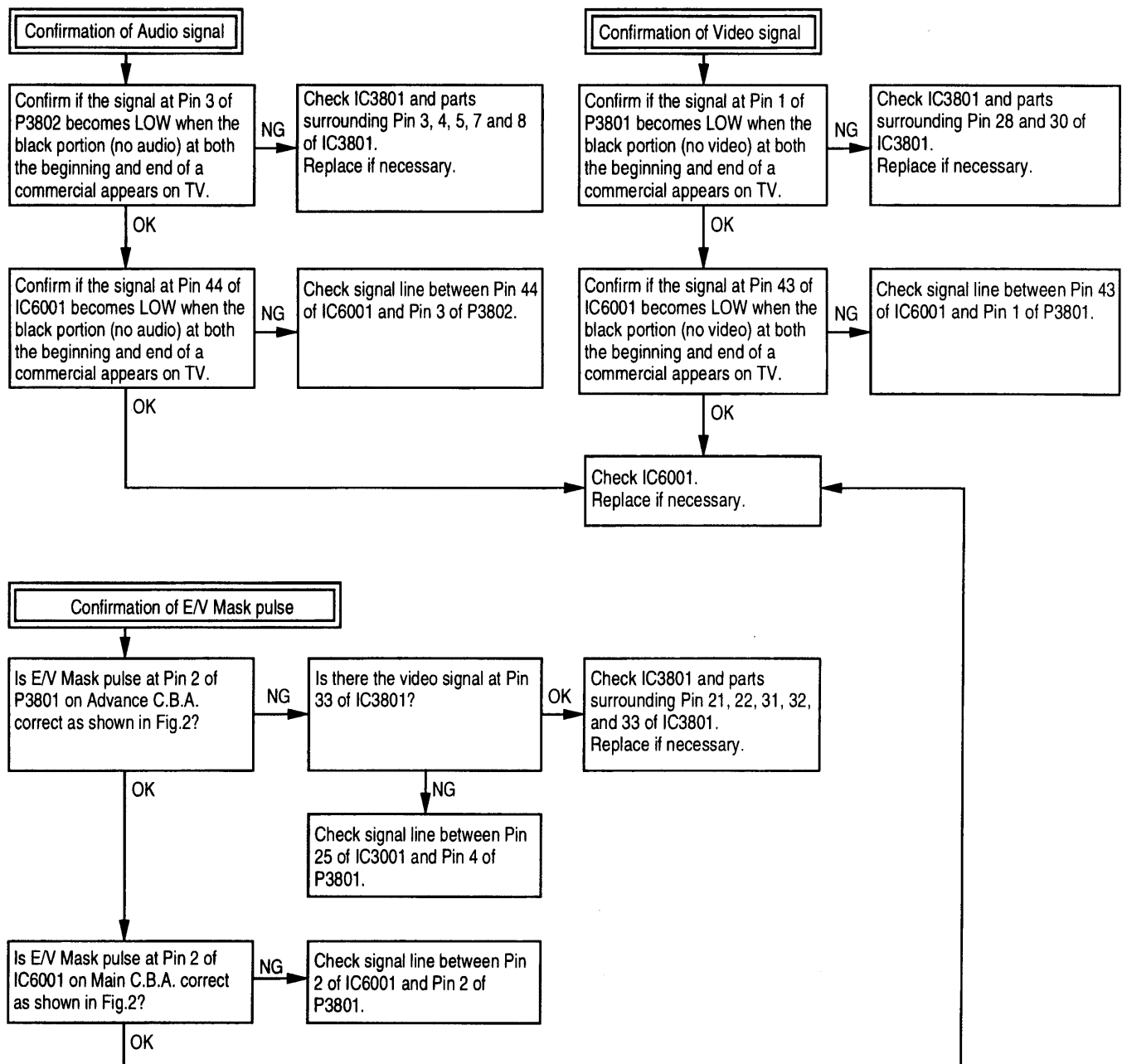


Fig.2

TROUBLESHOOTING GUIDES (Continued)

Movie Advance Section

Confirm if CM Advance Circuit works as shown in "HOW TO CONFIRM IF CM ADVANCE CIRCUIT IS WORKING." before performing "TROUBLESHOOTING OF MOVIE ADVANCE."

If NG, perform the "TROUBLESHOOTING OF CM ADVANCE." first.

If OK, perform following steps.

HOW TO CONFIRM IF MOVIE ADVANCE CIRCUIT IS WORKING.

