

EXPLODED VIEWS

Exploded View Subindex

Mechanism Top Section

Mechanism Bottom Section

Cassette Up Compartment Section

Chassis Frame and Casing Parts Section

EXPLODED VIEWS

EXPLODED VIEWS

MECHANISM (TOP) SECTION

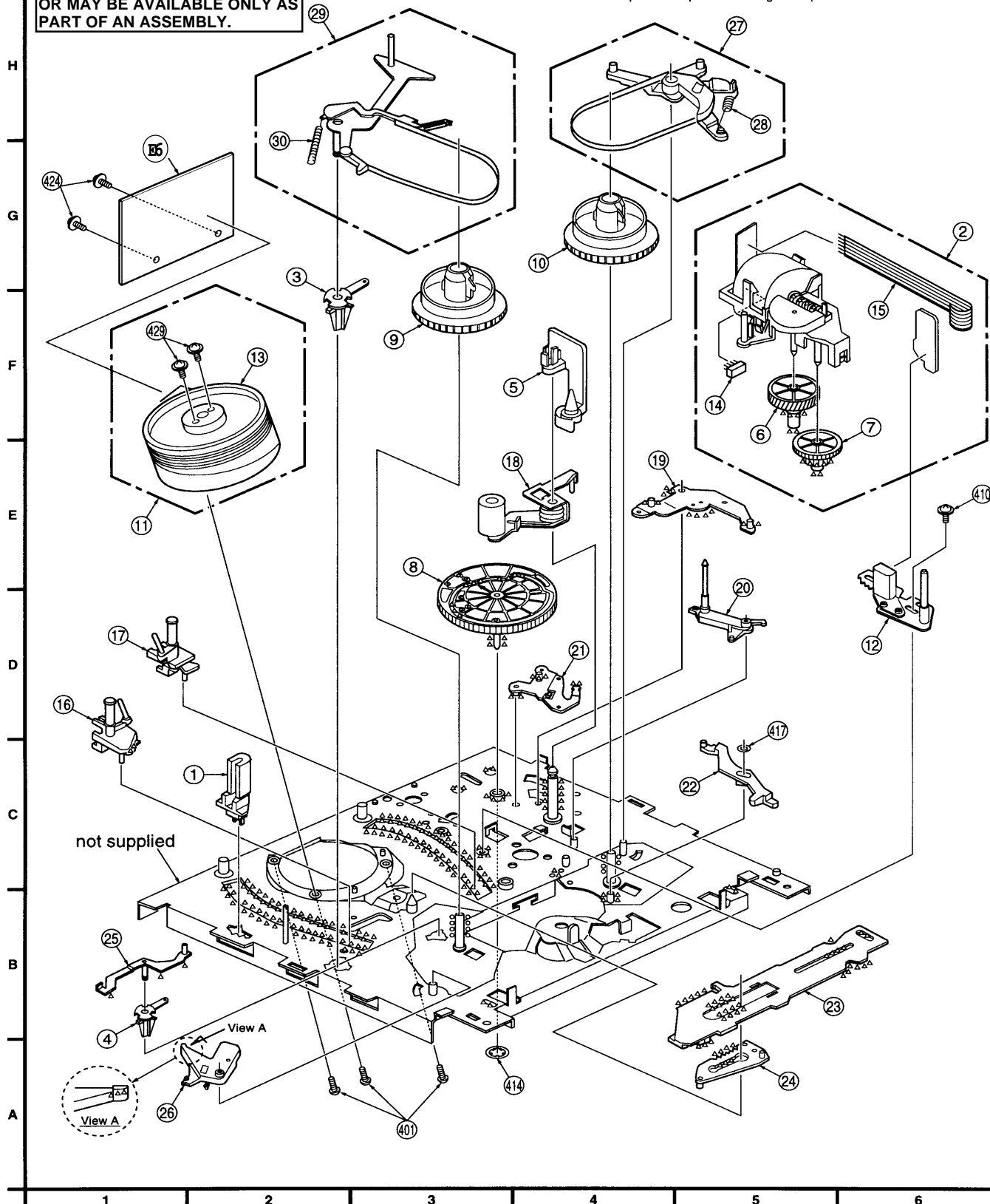
SOME PARTS WITH ITEM NUMBERS ON EXPLODED VIEWS MAY NOT BE AVAILABLE SEPARATELY, OR MAY BE AVAILABLE ONLY AS PART OF AN ASSEMBLY.

LUBRICATION POINTS

When the marked parts are replaced, apply the recommended lubricants or adhesive for better maintenance of the unit.

Mark	Kind of Lubricant	Availability	Part Number
XXX	Silicon Grease	Available from Factory	VFK1301
OOO	Spindle Oil	Purchase from Local Supplier	-----
AAA	Foil G5A	Available from Factory	VFKS0081

Note: Parts with no Ref. No. in "EXPLODED VIEW" are not supplied.
And some Ref. No. will be skipped. Be sure to make your orders of replacement parts according to the parts list.



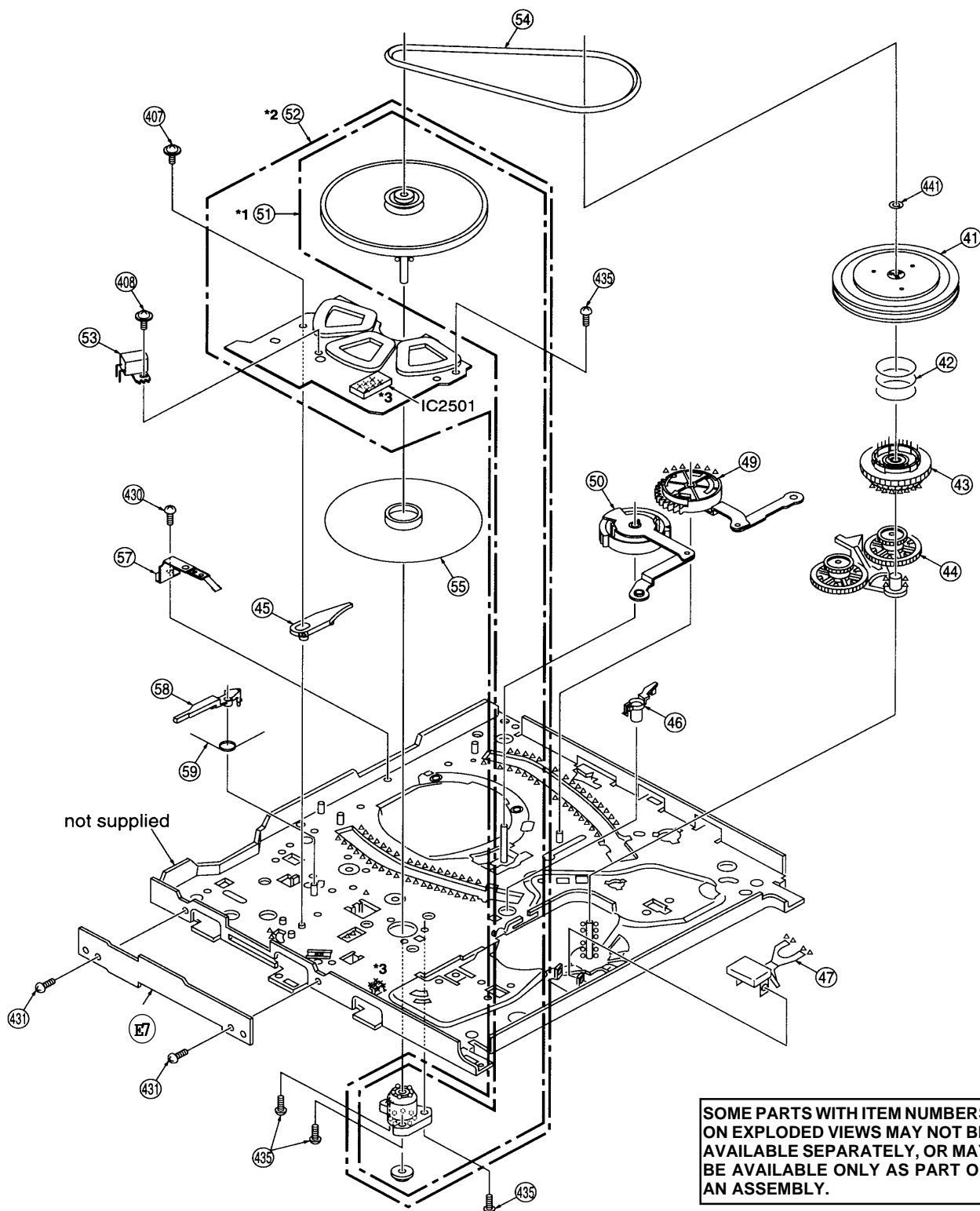
EXPLODED VIEWS

MECHANISM (BOTTOM) SECTION

LUBRICATION POINTS

When the marked parts are replaced, apply the recommended lubricants or adhesive for better maintenance of the unit.

Mark	Kind of Lubricant	Availability	Part Number
XXX	Silicon Grease	Available from Factory	VFK1301
OOO	Spindle Oil	Purchase from Local Supplier	-----
AAA	Floil G5A	Available from Factory	VFKS0081



SOME PARTS WITH ITEM NUMBERS ON EXPLODED VIEWS MAY NOT BE AVAILABLE SEPARATELY, OR MAY BE AVAILABLE ONLY AS PART OF AN ASSEMBLY.

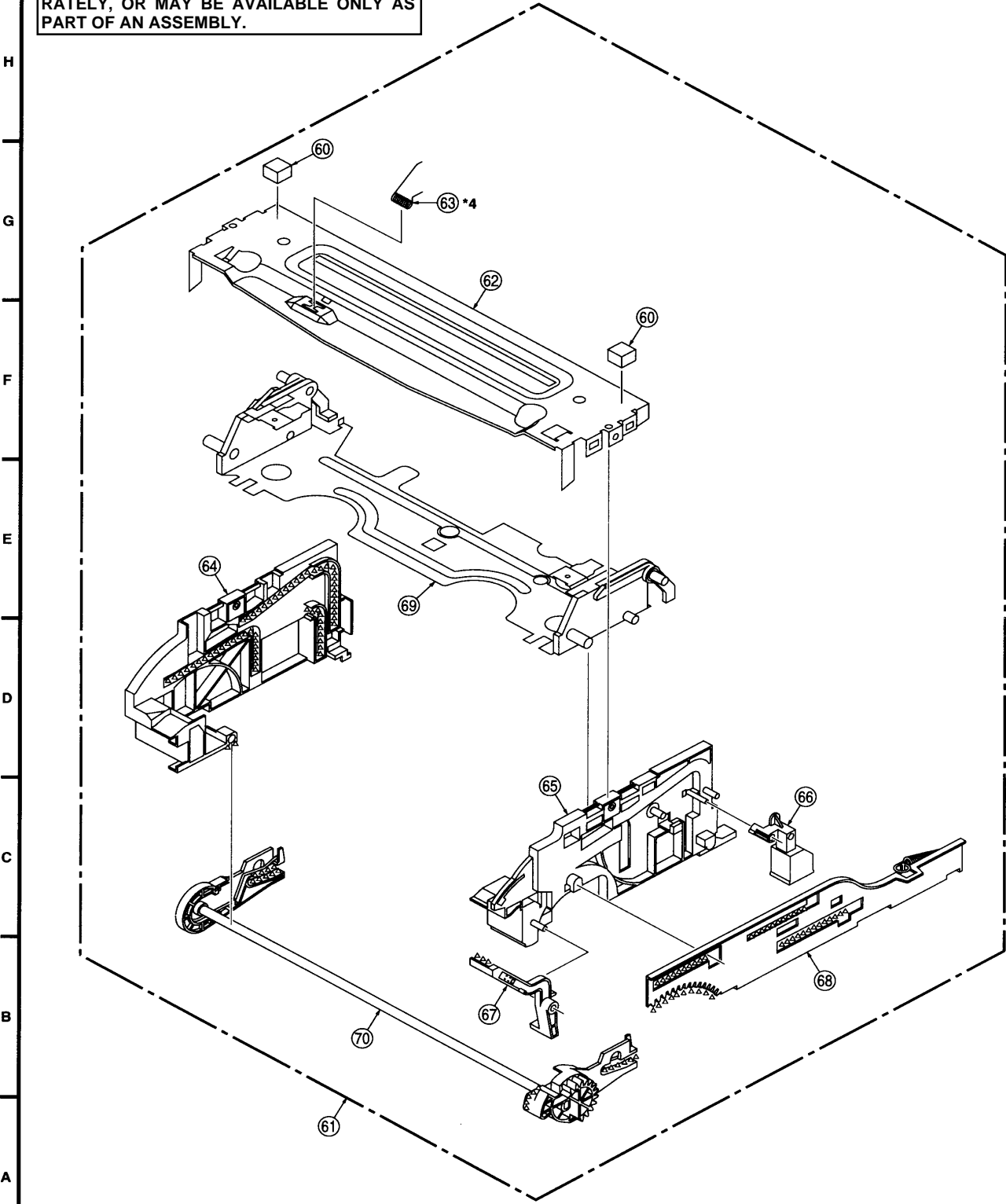
- *1: Capstan Rotor Unit, Capstan Holder Unit, and Stopper are supplied as a Capstan Rotor Kit only.
 *2: Capstan Stator Unit, Capstan Rotor Unit, Capstan Holder Unit, and Stopper are supplied as a Capstan Stator Kit only. However, IC2501 (AN3845SC) is available separately as a replacement part.
 *3: When installing the IC2501 or Capstan Stator Unit, be sure to apply Silicon Grease (VFK1301). Refer to "Capstan Stator Unit" of "Disassembly/Assembly Procedures of Mechanism" section for more information.

EXPLODED VIEWS

CASSETTE UP
COMPARTMENT SECTION

SOME PARTS WITH ITEM NUMBERS ON EX-
PLODED VIEWS MAY NOT BE AVAILABLE SEPA-
RATELY, OR MAY BE AVAILABLE ONLY AS
PART OF AN ASSEMBLY.

LUBRICATION POINTS			
When the marked parts are replaced, apply the recommended lubricants or adhesive for better maintenance of the unit.			
Mark	Kind of Lubricant	Availability	Part Number
XXX	Silicon Grease	Available from Factory	VFK1301
OOO	Spindle Oil	Purchase from Local Supplier	-----
ΔΔΔ	Floil G5A	Available from Factory	VFKS0081



*4: As an ESD Countermeasure, the spring should be installed in the proper position.
Please refer to Disassembly/Assembly Procedure of Mechanical Section for more information.

EXPLODED VIEWS

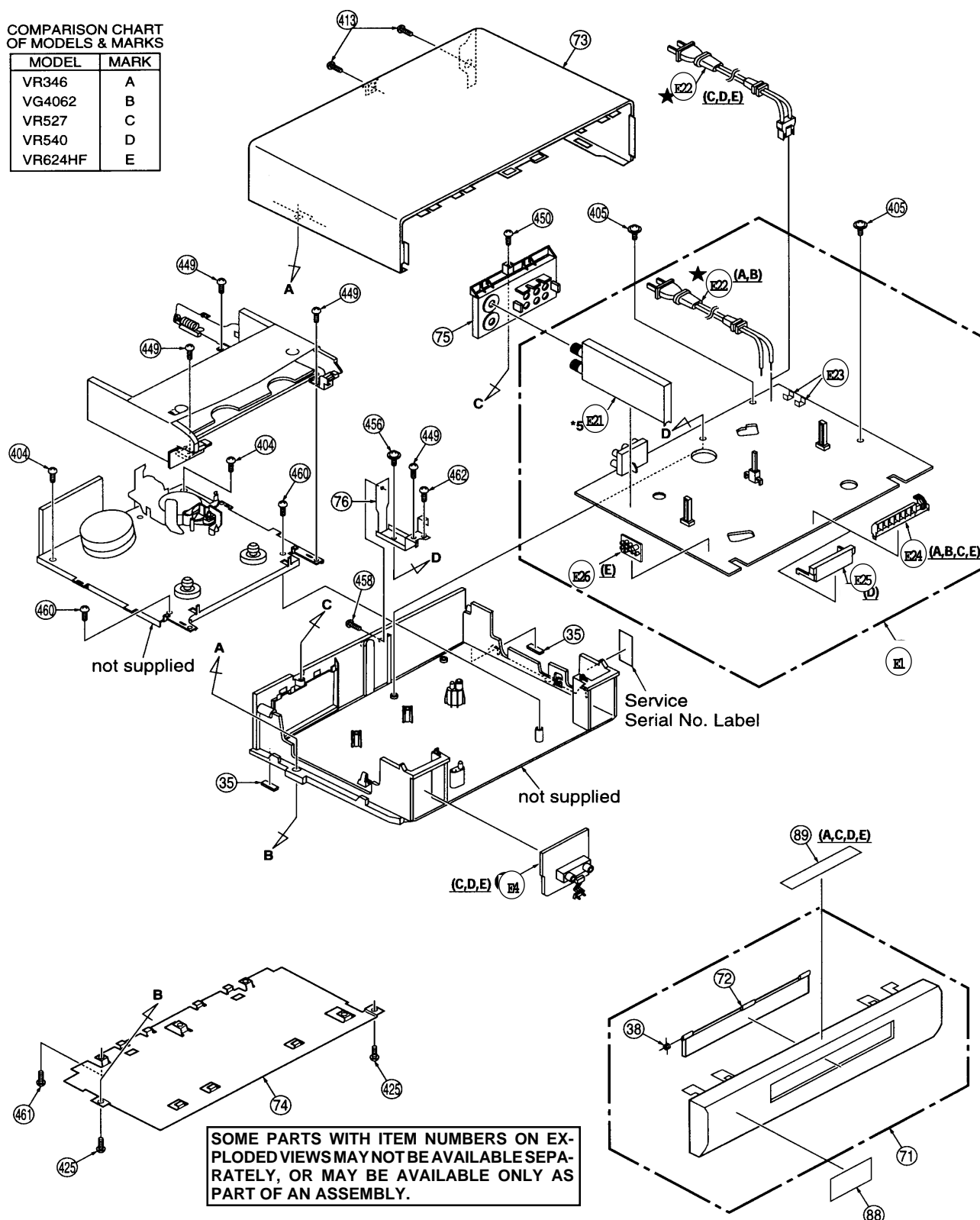
CHASSIS FRAME AND
CASING PARTS SECTION

IMPORTANT SAFETY NOTICE

COMPONENTS IDENTIFIED BY THE SIGN ★ HAVE SPECIAL CHARACTERISTICS IMPORTANT FOR SAFETY. WHEN REPLACING ANY OF THESE COMPONENTS, USE ONLY THE SPECIFIED PARTS.

COMPARISON CHART
OF MODELS & MARKS

MODEL	MARK
VR346	A
VG4062	B
VR527	C
VR540	D
VR624HF	E



*5: Since the UHF/VHF TUNER/TV DEMODULATOR UNIT has already been pre-adjusted at the factory, do not try to adjust the UHF/VHF TUNER/TV DEMODULATOR UNIT. The UHF/VHF TUNER/TV DEMODULATOR UNIT replacement part is available as a complete assembly unit only.