

TROUBLESHOOTING SUBINDEX

Power Circuit

No Output Voltage

Servo/Syscon/Logic Circuit

Digitron Does Not Operate

LED or Digitron Is Lit But Key Does Not Operate

1 Minute Back Up Timer Does Not Operate

Channel Broadcast Signal Is Not Received

LED Is Inoperative

Playback Picture Is Not Good (Noise After Tracking Adjustment)

Playback Picture Is Not Good (Noise Over Entire Screen)

VCR Goes Into Auto Stop During Playback

Drum Motor Does Not Rotate

Capstan Motor Does Not Rotate

VCR Goes Into Emergency Mode

Cassette Loading Inoperative

Video Circuit (Hi-Fi Model)

EE Mode Picture NG

PB Video Signal Missing

Record Video Signal NG

OSD Character Incorrect

Audio Circuit (Hi-Fi Model)

No Sound In The EE Mode

No Hi-Fi Sound In The Playback Mode Of Hi-Fi Recorded Tape

No Hi-Fi Sound In The Playback Mode After Hi-Fi Recording

No Sound In The Linear Playback Mode

No Linear Sound In The Playback Mode After Linear Recording

Extended Data Service Circuit

ACS (Auto Clock Set) and Station ID Display Do Not Operate

CBC Circuit

CBC Does Not Operate

Commercial Advance Circuit

Commercial Advance Does Not Operate

Movie Advance Does Not Operate

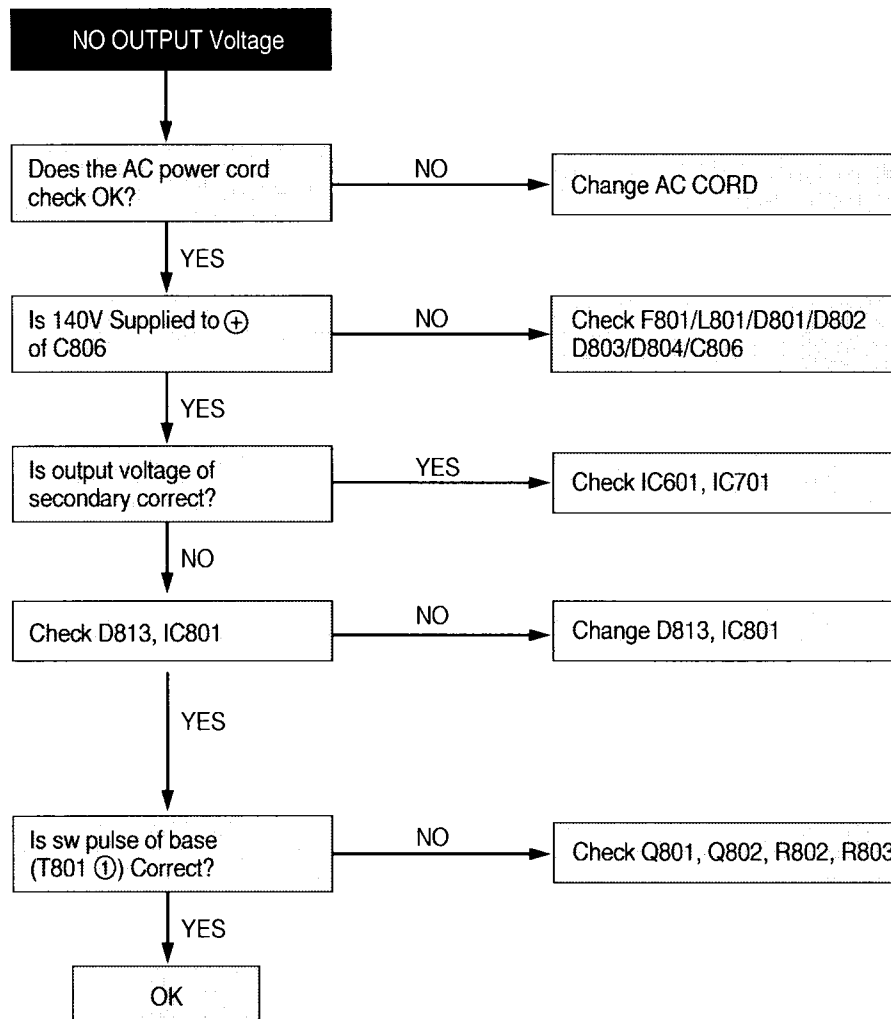
VR636HF/VR645HF/VG4268

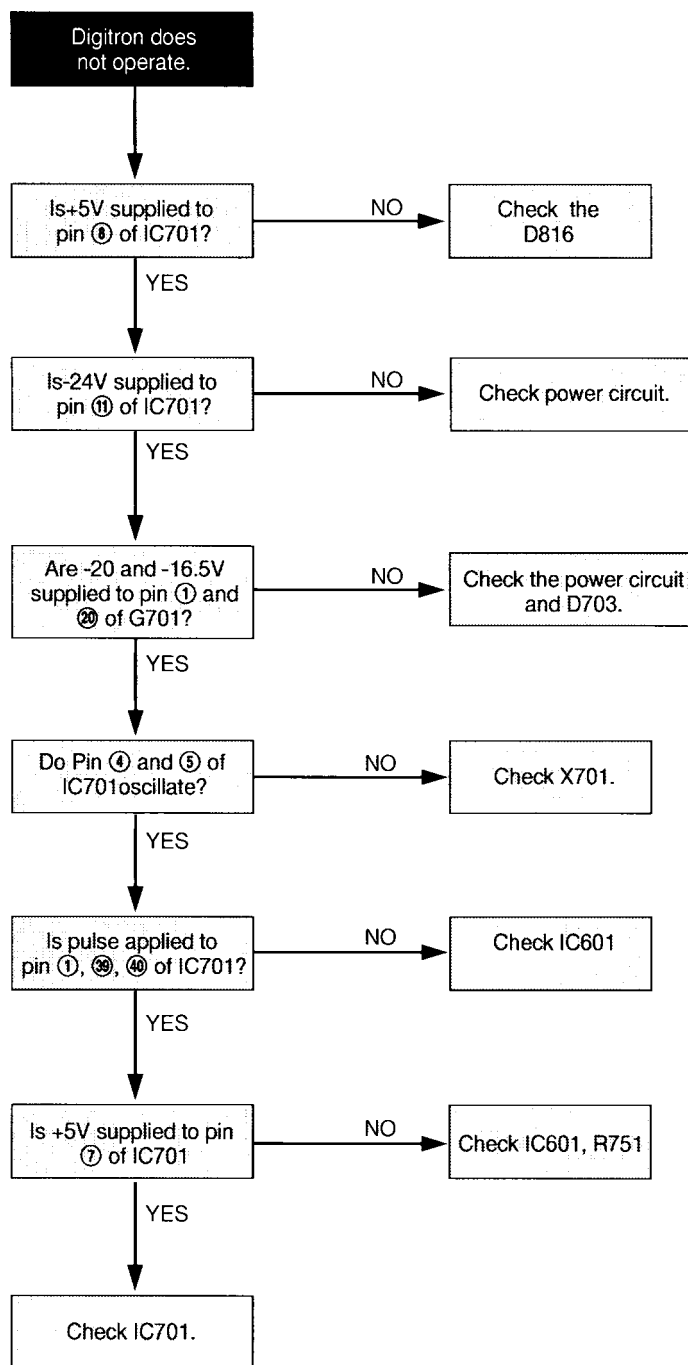
TROUBLESHOOTING GUIDES

Power Circuit



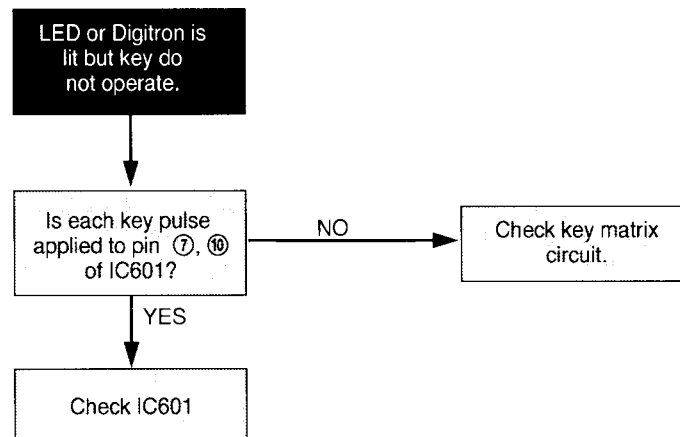
No Output Voltage





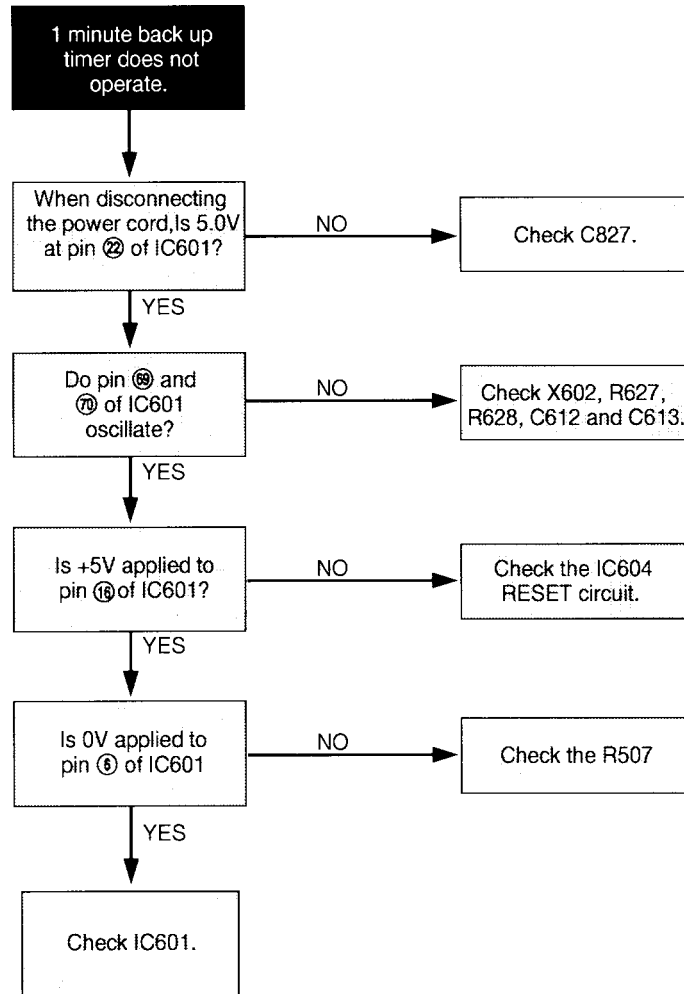


LED or Digitron Is Lit But Key Does Not Operate



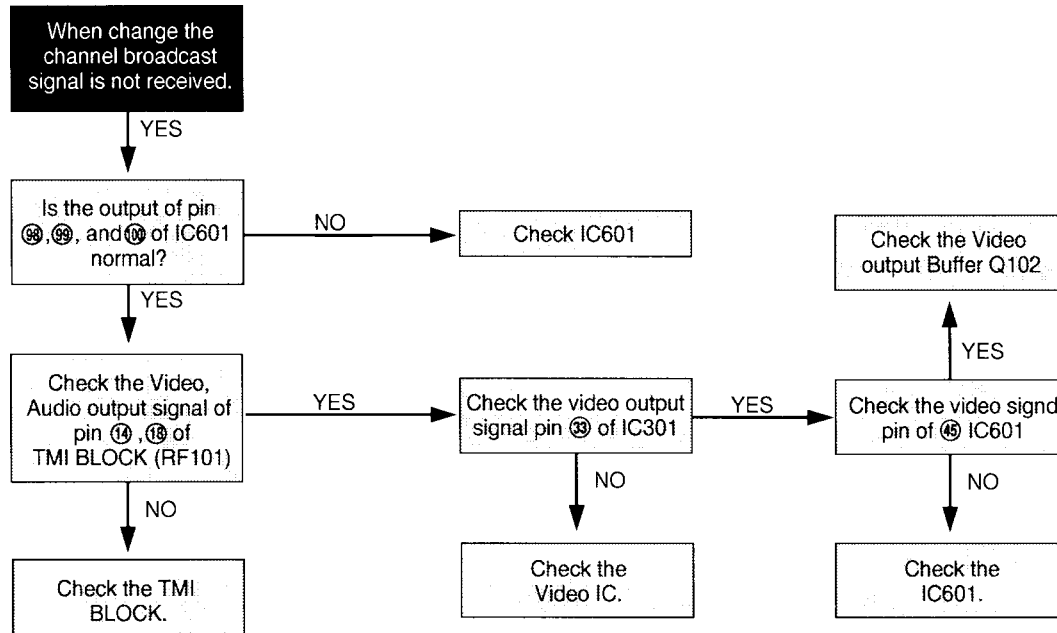


1 Minute Back Up Timer Does Not Operate



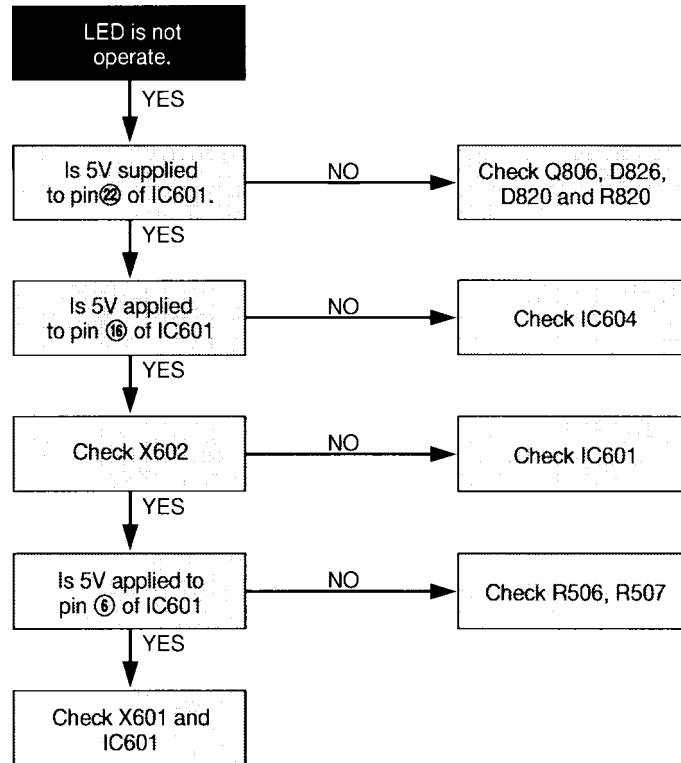


Channel Broadcast Signal Is Not Received



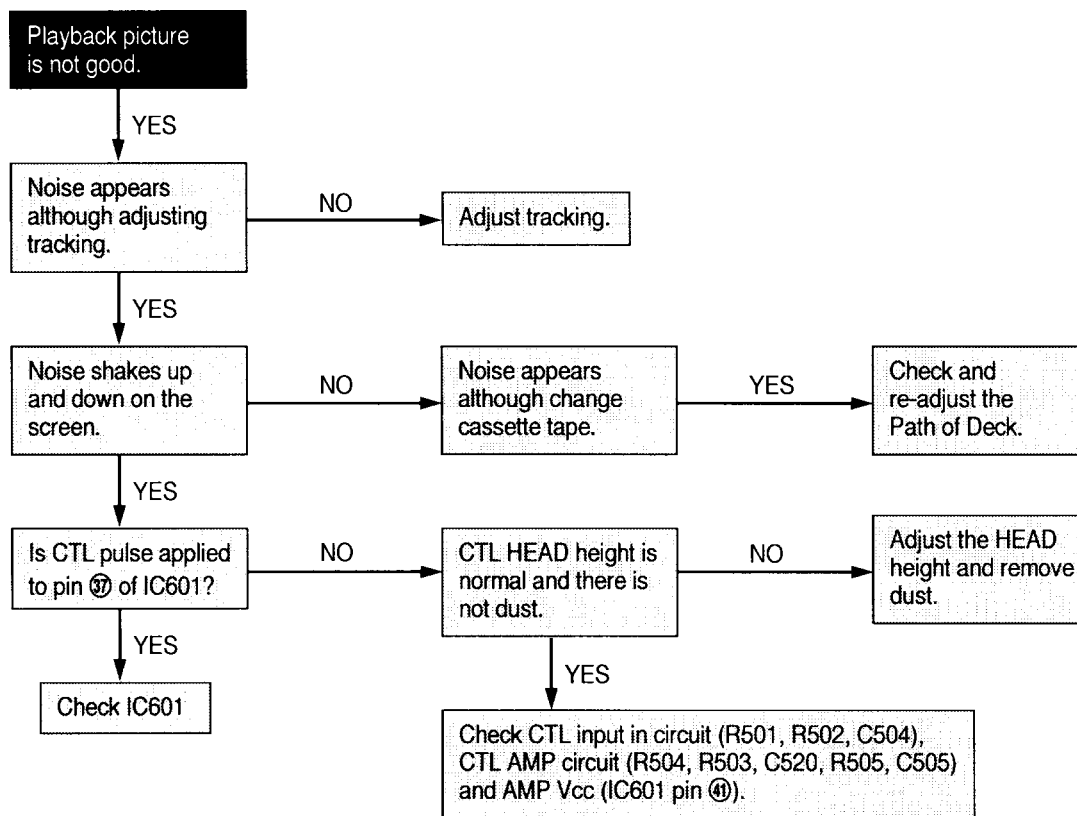


LED Is Inoperative



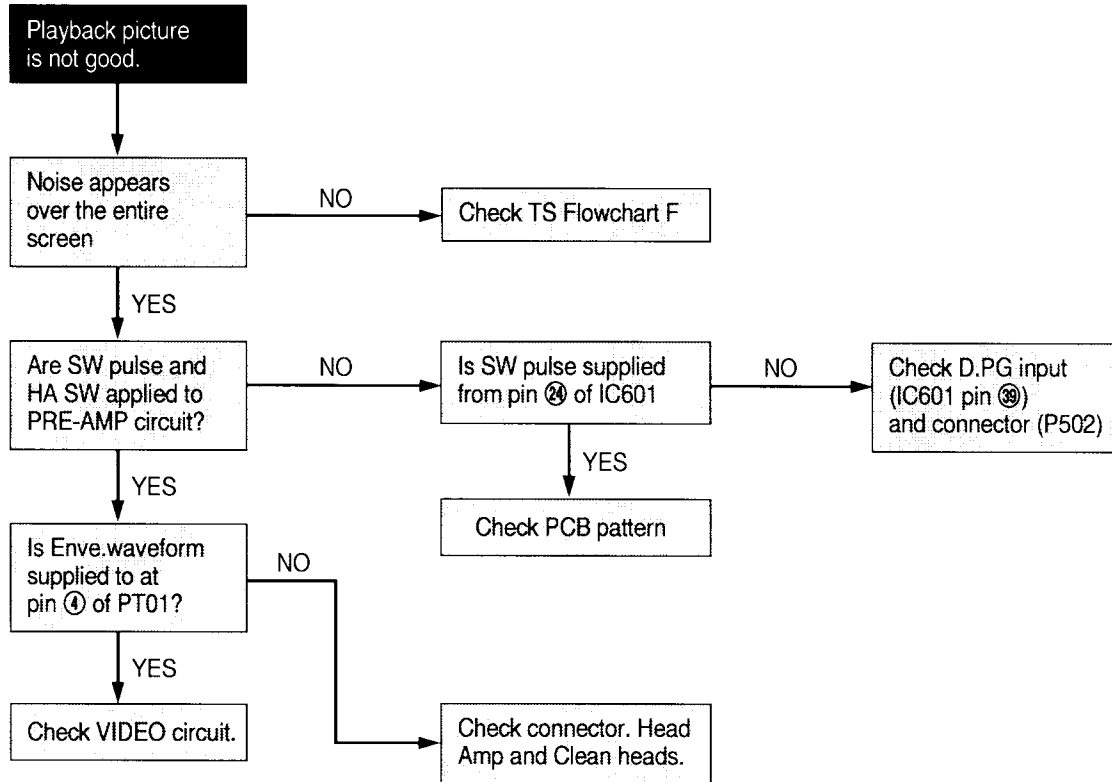


Playback Picture Is Not Good (Noise After Tracking Adjustment)



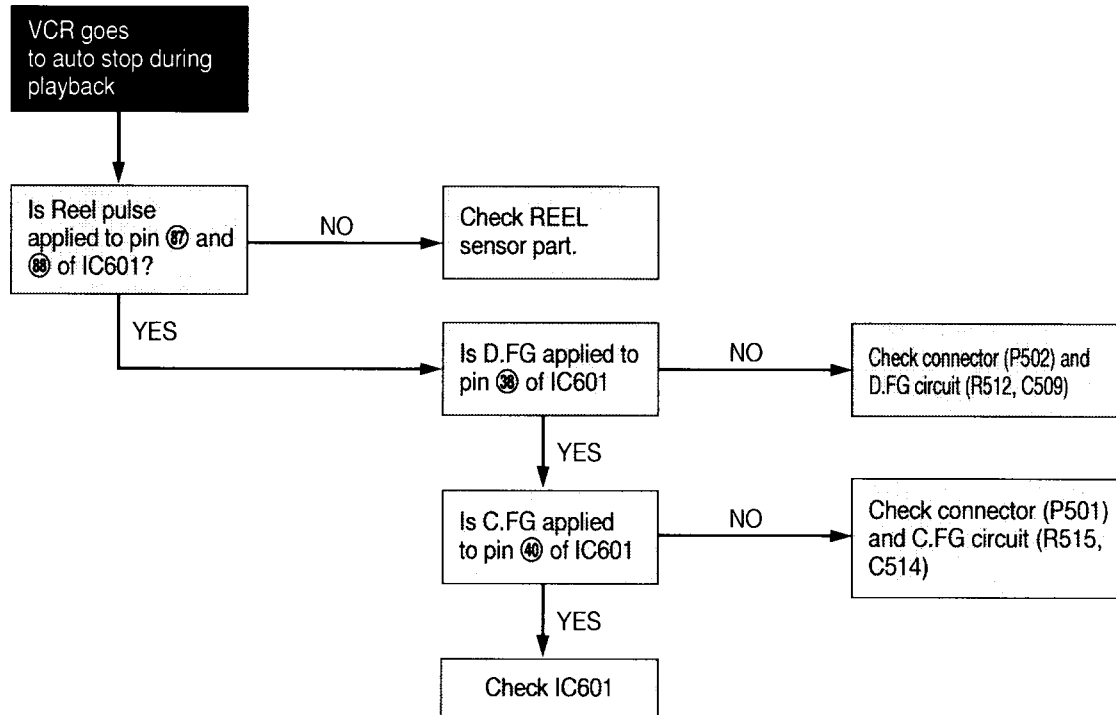


Playback Picture Is Not Good (Noise Over Entire Screen)



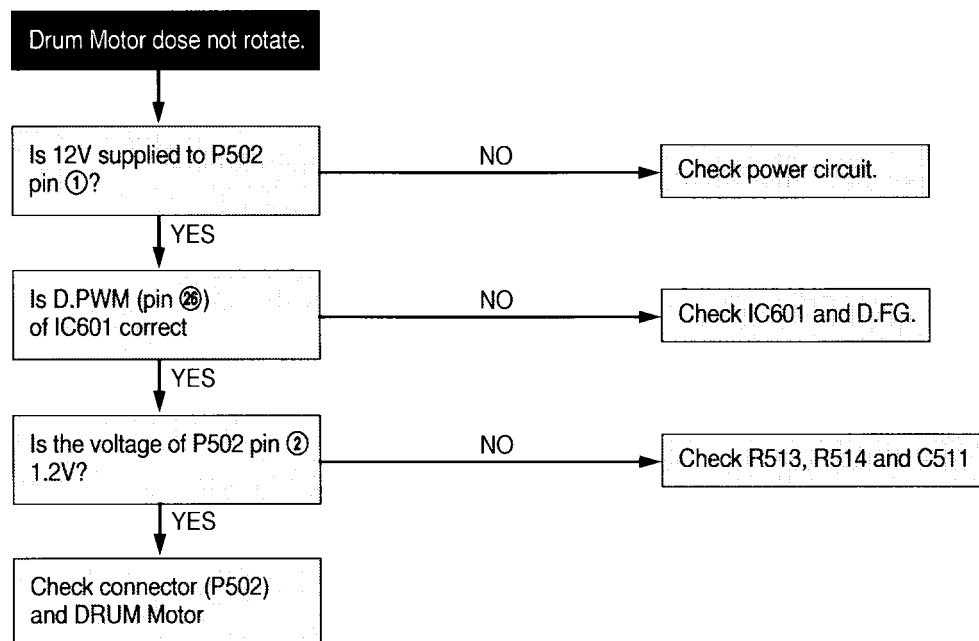


VCR Goes Into Auto Stop During Playback



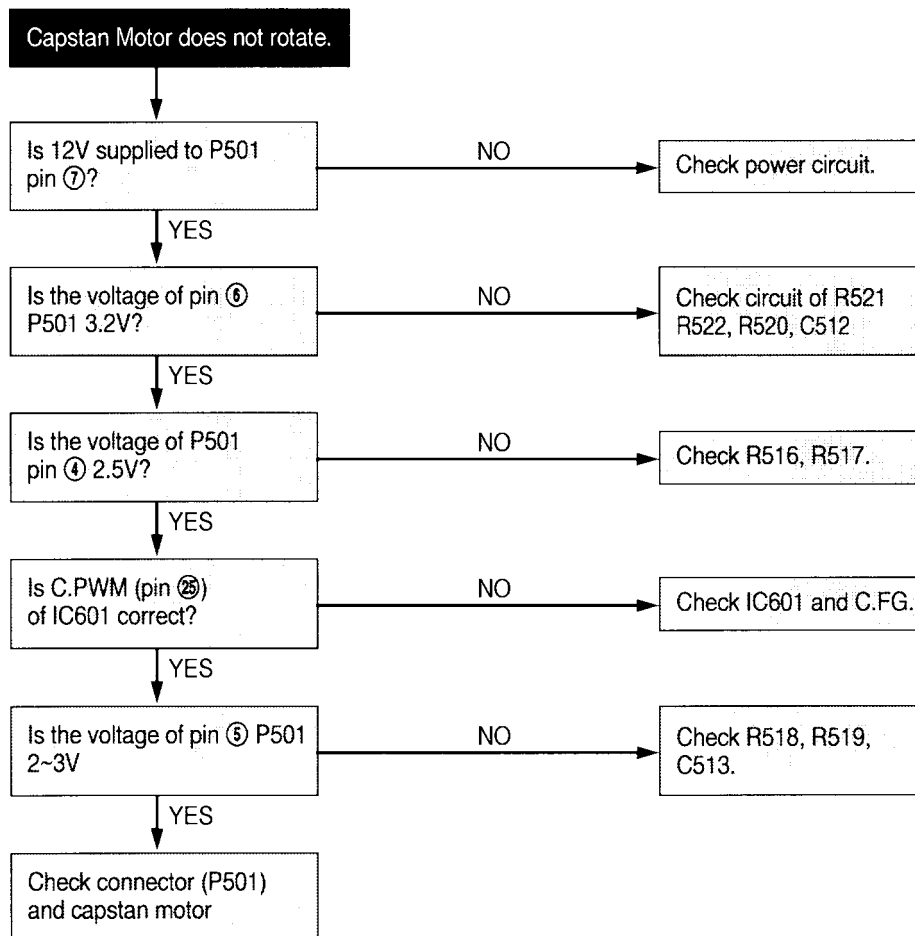


Drum Motor Does Not Rotate



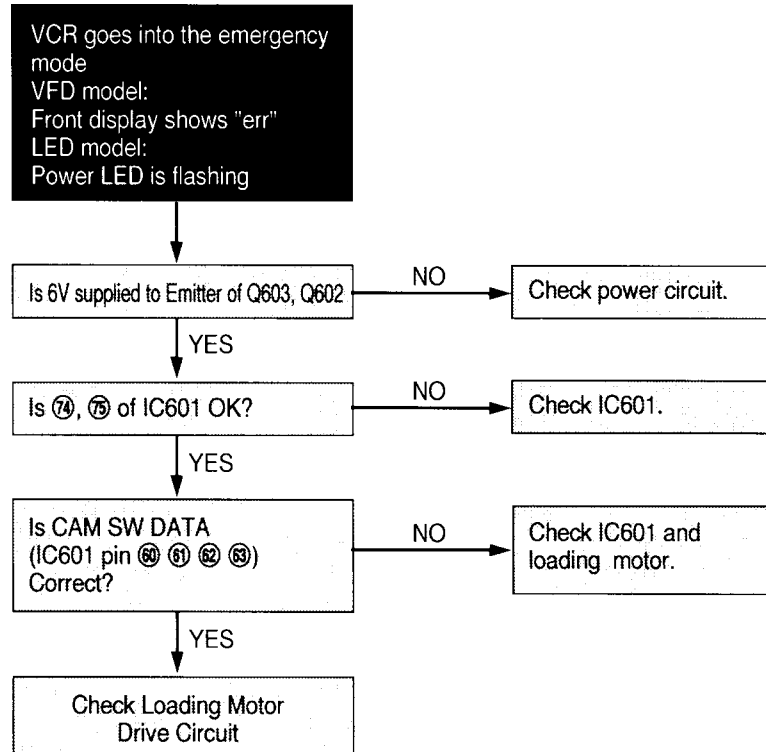


Capstan Motor Does Not Rotate



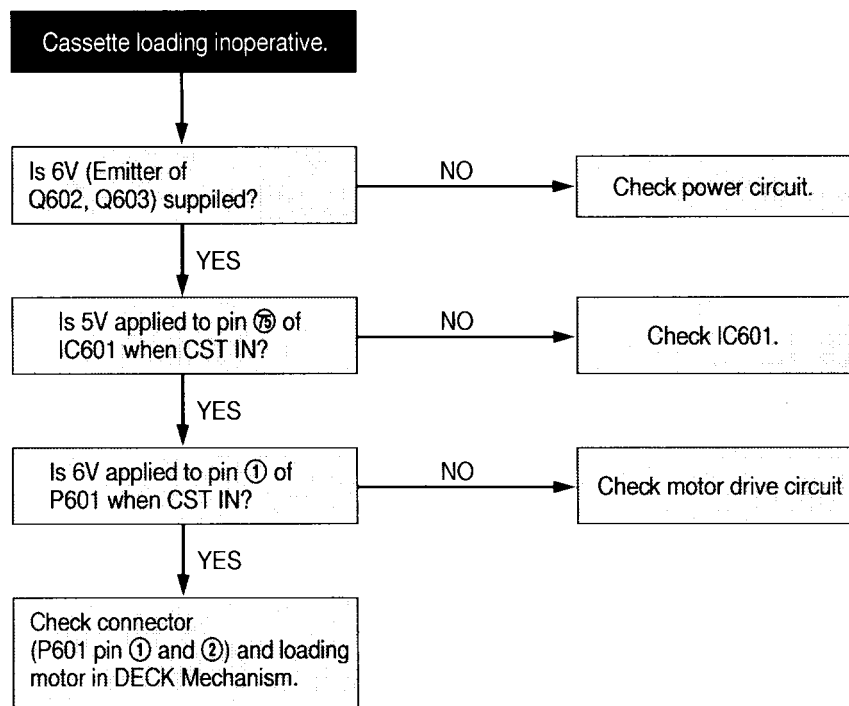


VCR Goes Into Emergency Mode





Cassette Loading Inoperative



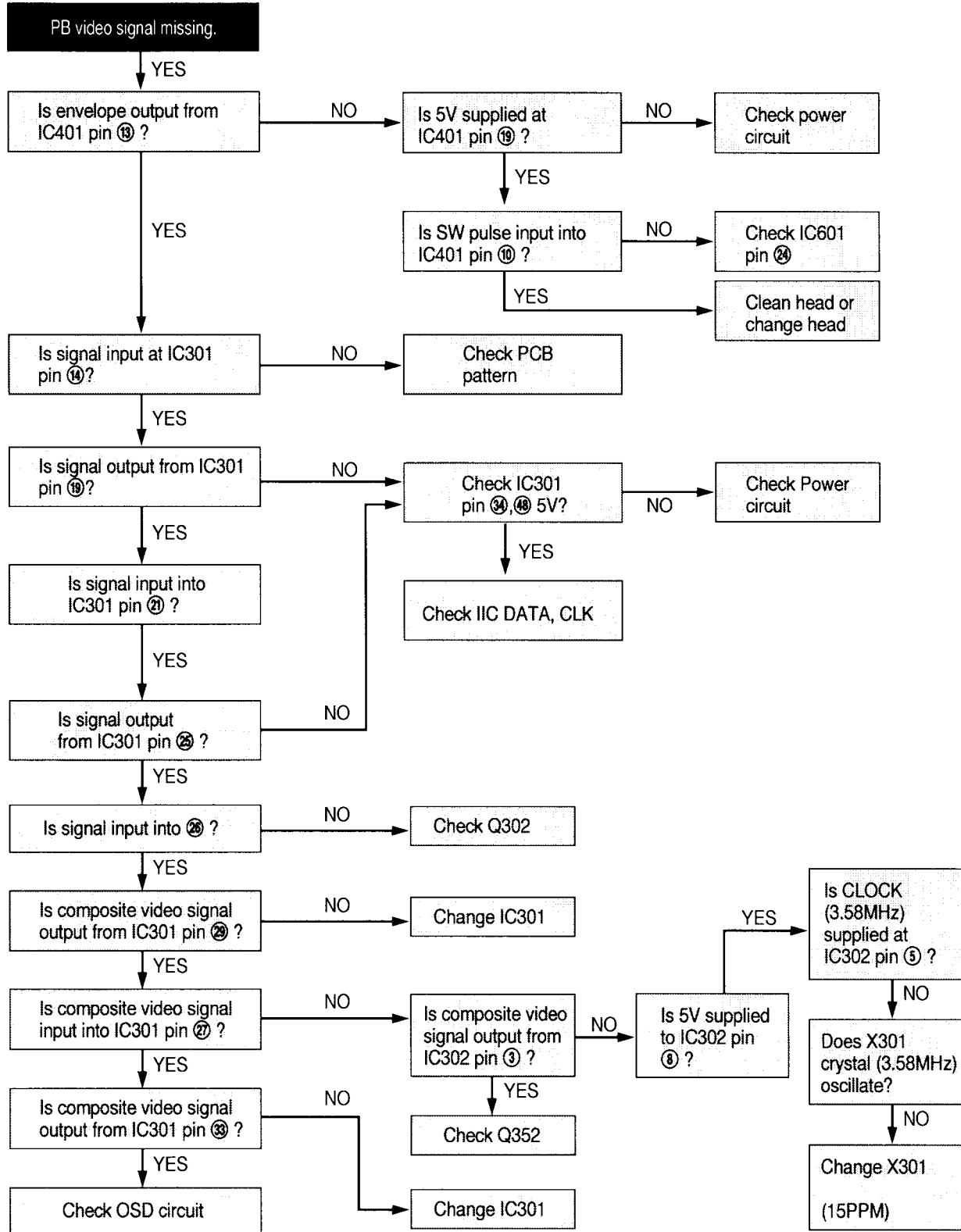
```

graph TD
    Start([EE MODE Picture NG]) -- YES --> Q1{Is video signal input into pin 35, 37, 39 of IC301}
    Q1 -- NO --> A1[Check PIF circuit and LINE IN JACK]
    Q1 -- YES --> Q2{Is 5V supplied at pin 34, 40 of IC301}
    Q2 -- NO --> A2[Check power circuit.]
    Q2 -- YES --> Q3{Is signal output from pin 33 of IC301}
    Q3 -- NO --> A3[Check IIC CLK, DATA]
    Q3 -- YES --> Q4{Is signal input into pin 43 of IC601}
    Q4 -- NO --> A4[Check PCB pattern]
    Q4 -- YES --> Q5{Is signal output from pin 45 of IC601}
    Q5 -- NO --> Q6{Is 5V supplied to pin 22 and 42 of IC601}
    Q6 -- NO --> A5[Check power circuit]
    Q6 -- YES --> A6[Check IC601]
    Q5 -- YES --> RF[RF out]
    Q5 -- YES --> Line[Line out]

```

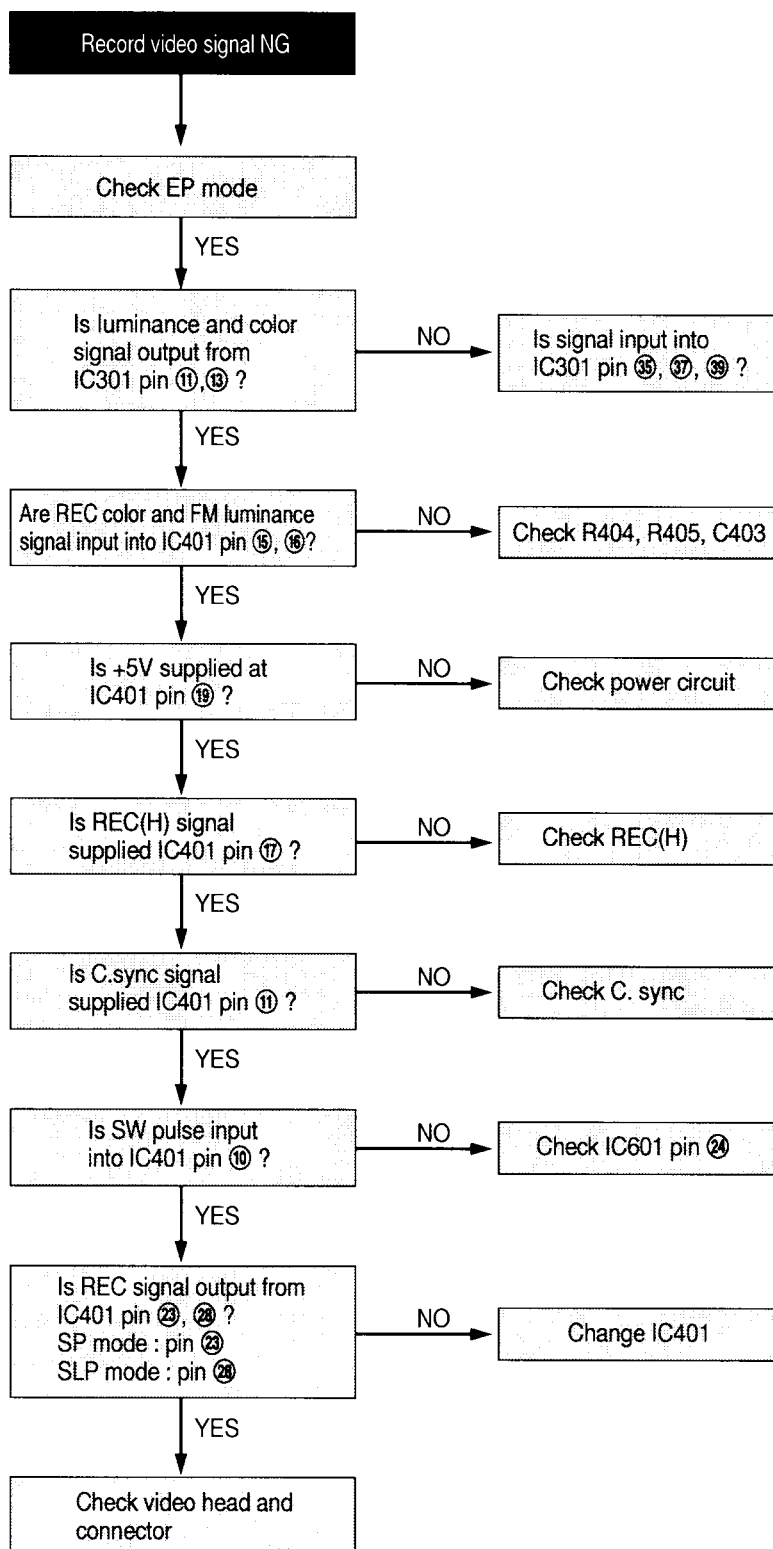


PB Video Signal Missing



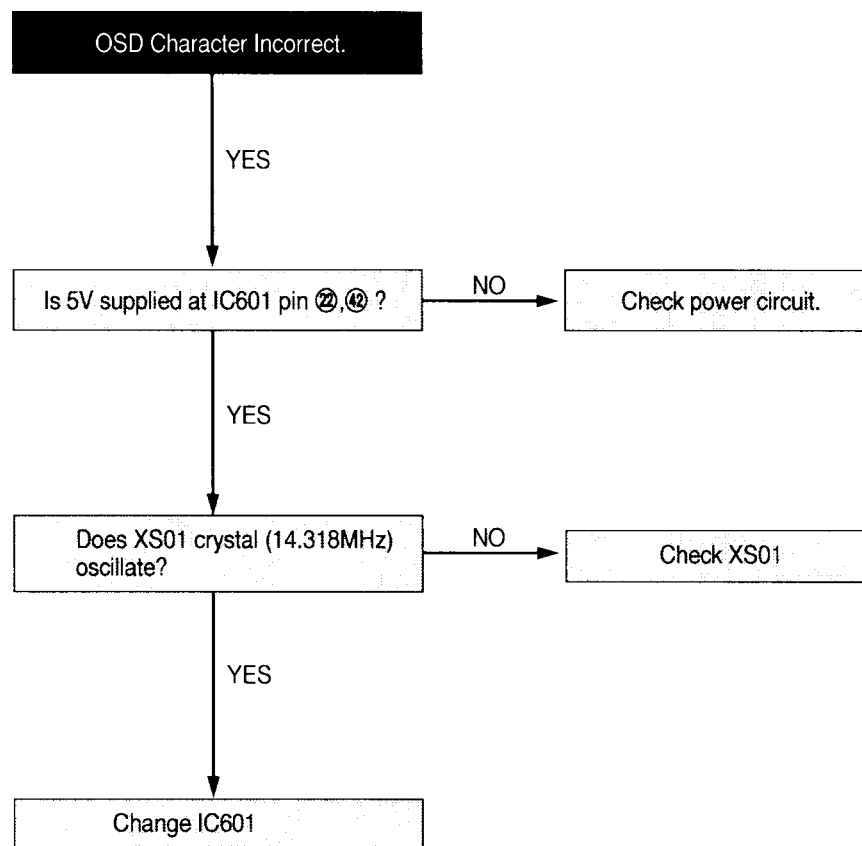


Record Video Signal NG



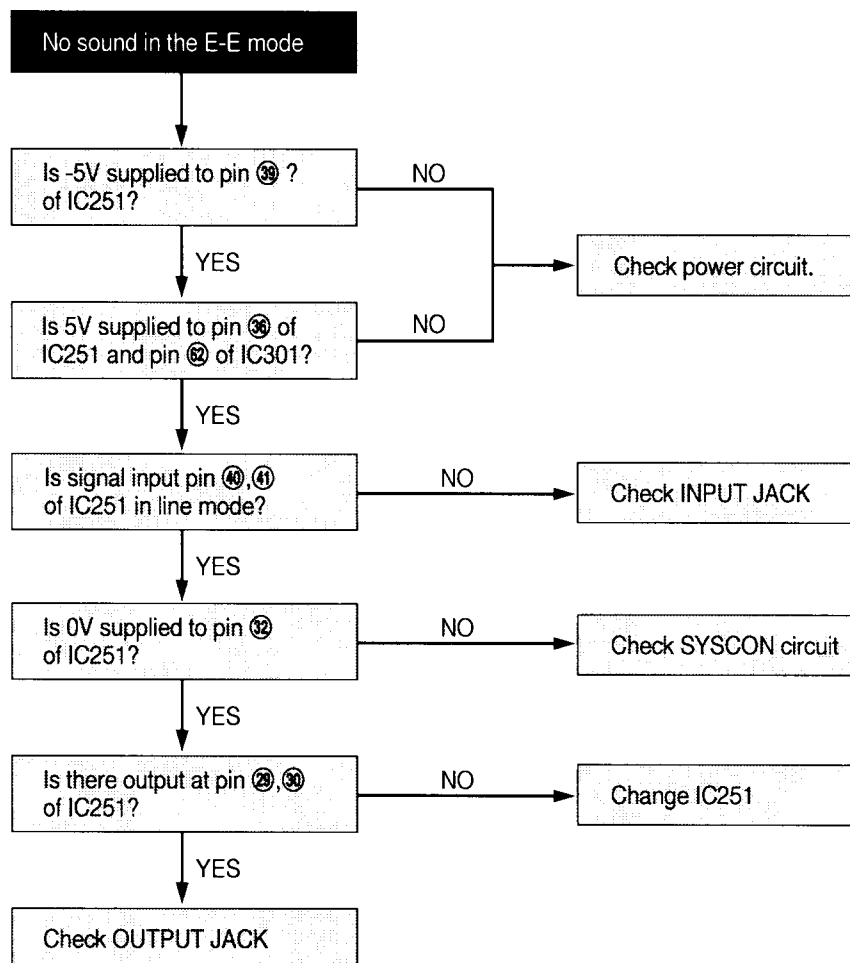


OSD Character Incorrect



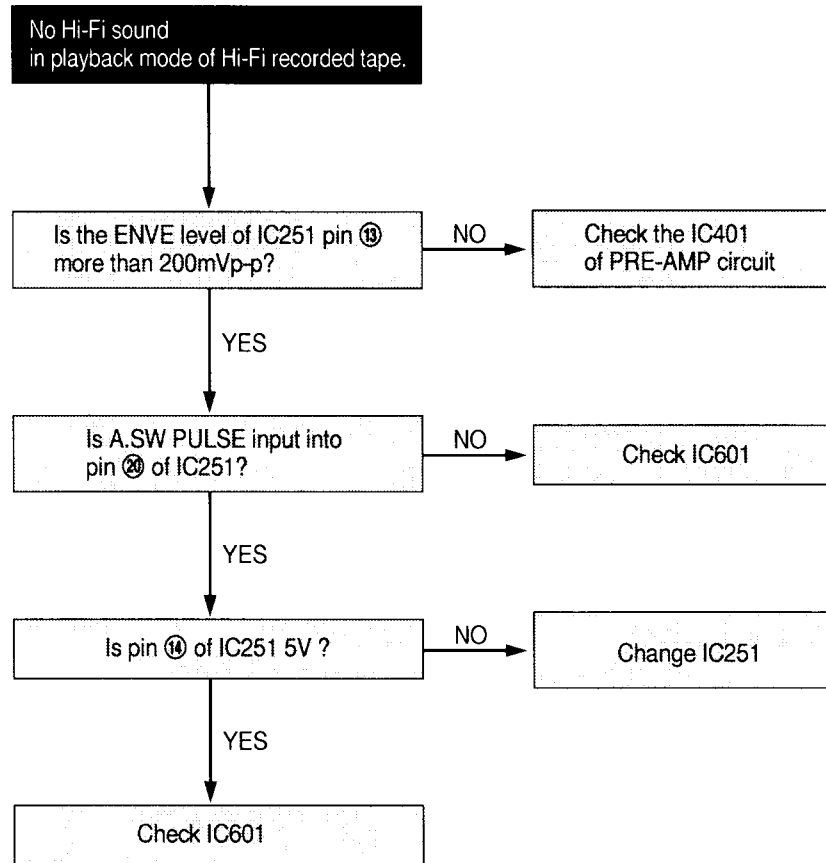


No Sound In The EE Mode



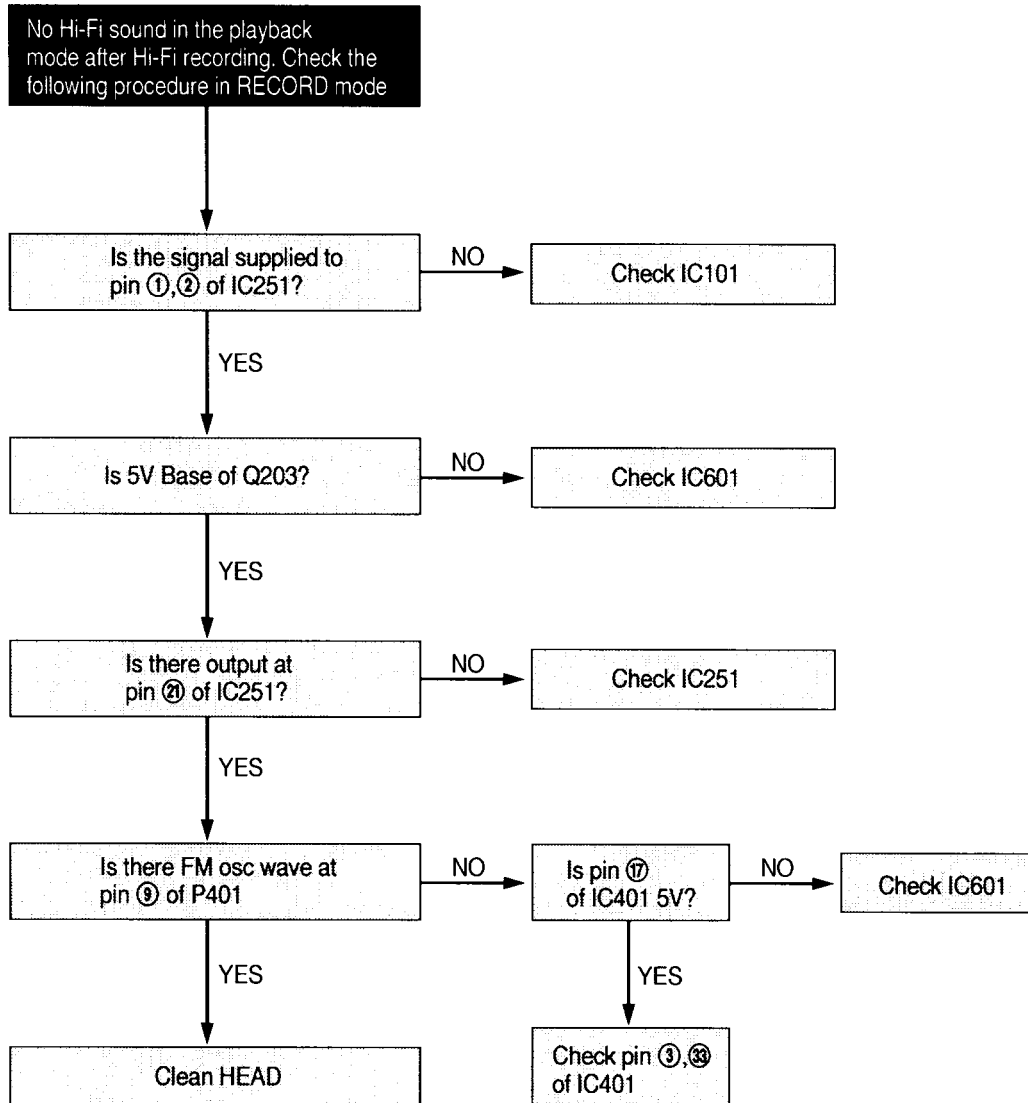


No Hi-Fi Sound In The Playback Mode Of Hi-Fi Recorded Tape



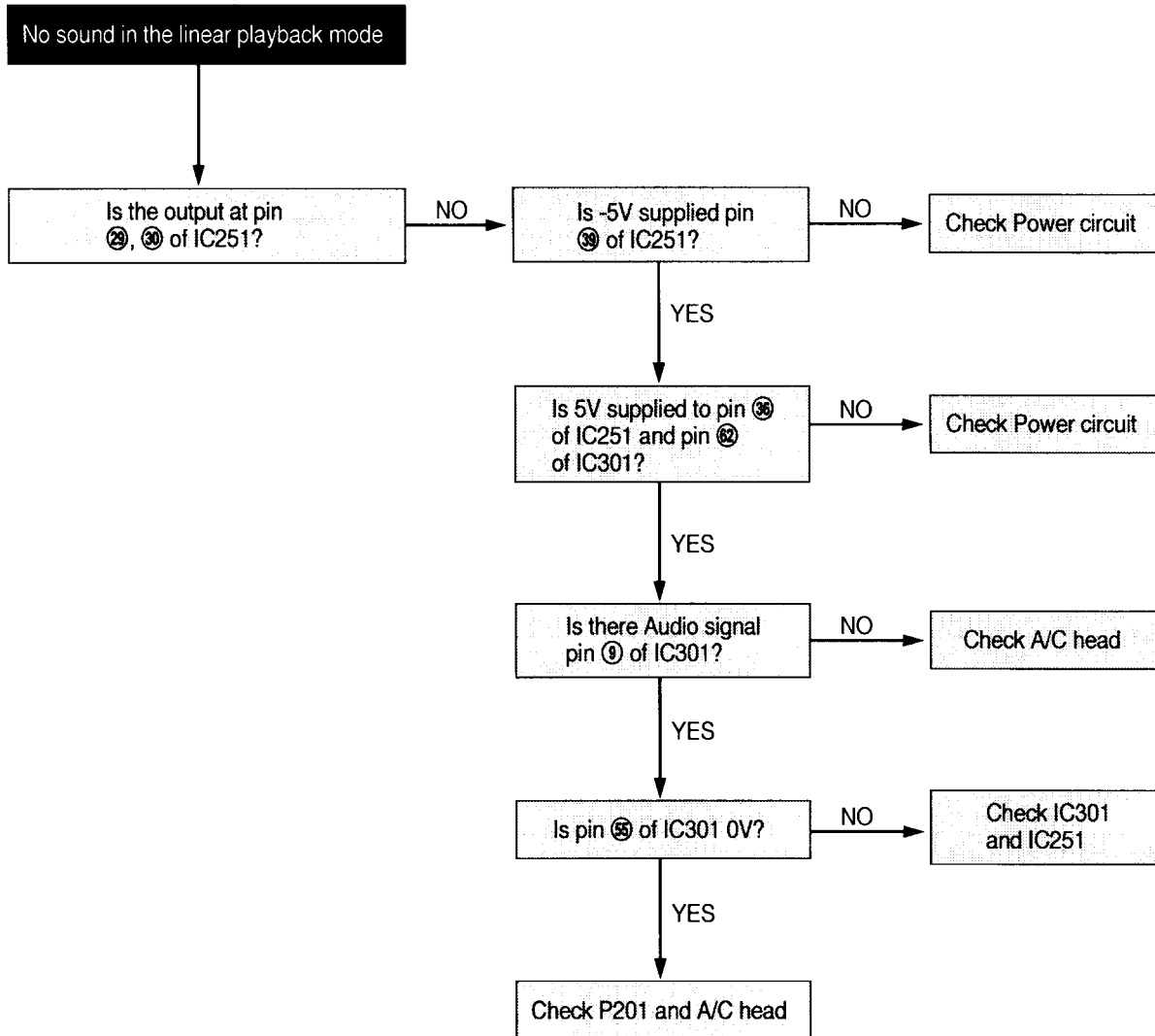


No Hi-Fi Sound In The Playback Mode After Hi-Fi Recording



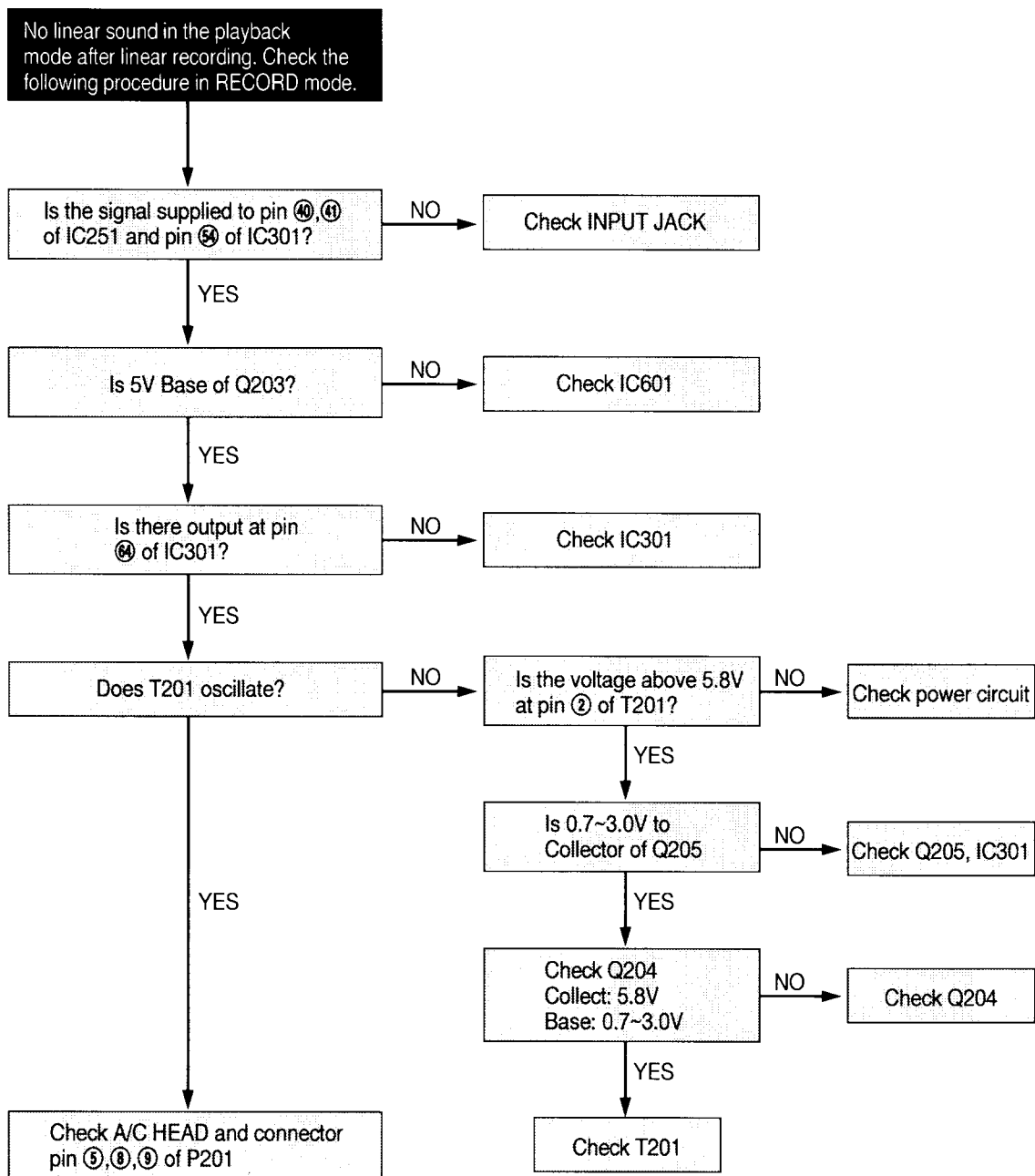


No Sound In The Linear Playback Mode



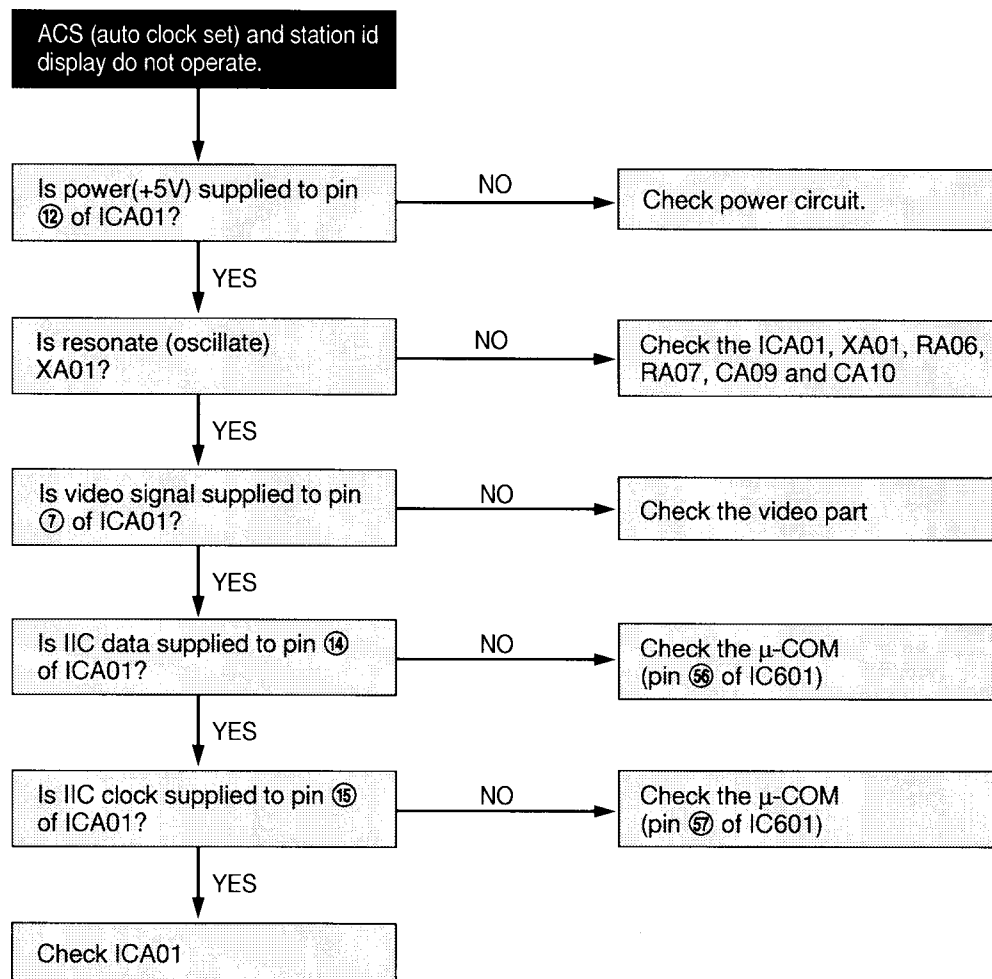


No Linear Sound In The Playback Mode After Linear Recording





ACS (Auto Clock Set) and Station ID Display Do Not Operate



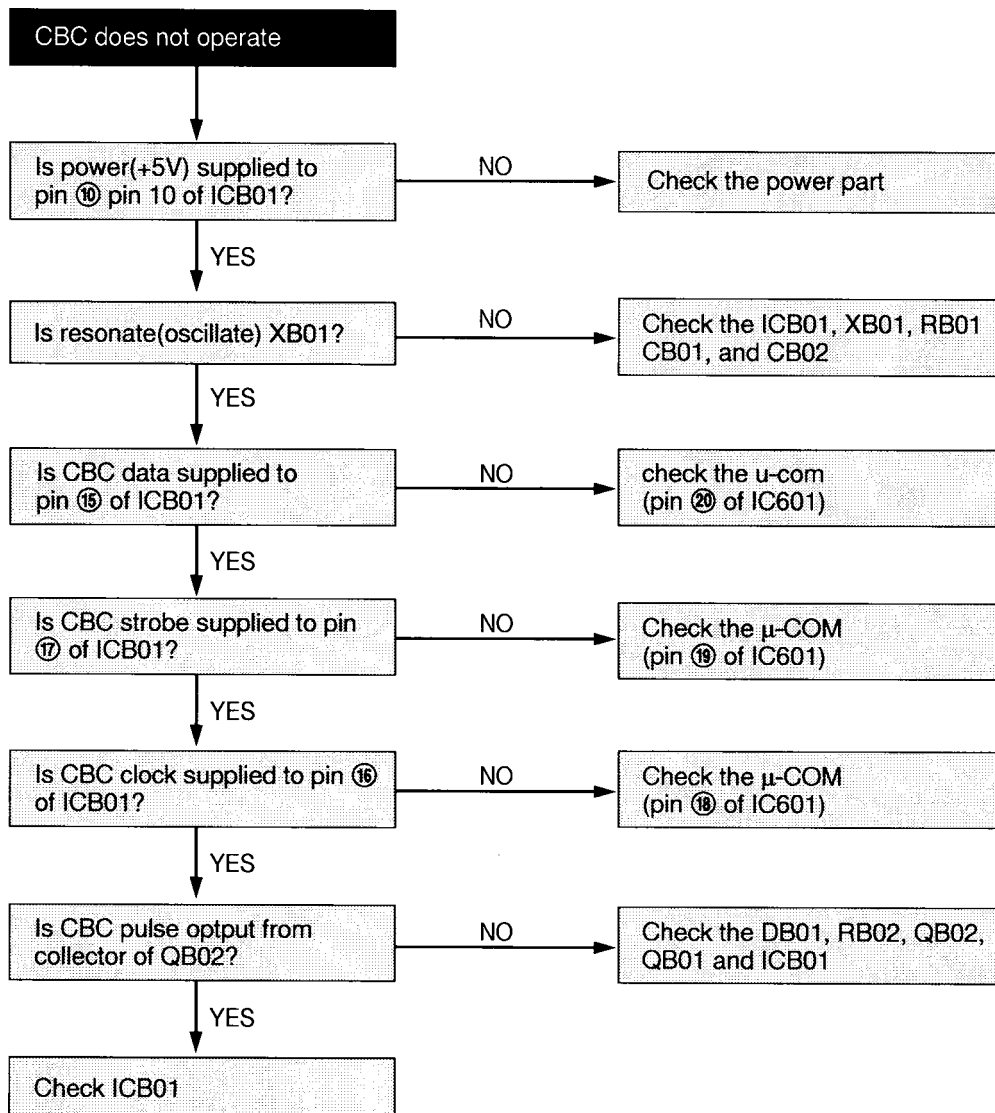
VR636HF/VR645HF/VG4268

TROUBLESHOOTING GUIDES

CBC Circuit

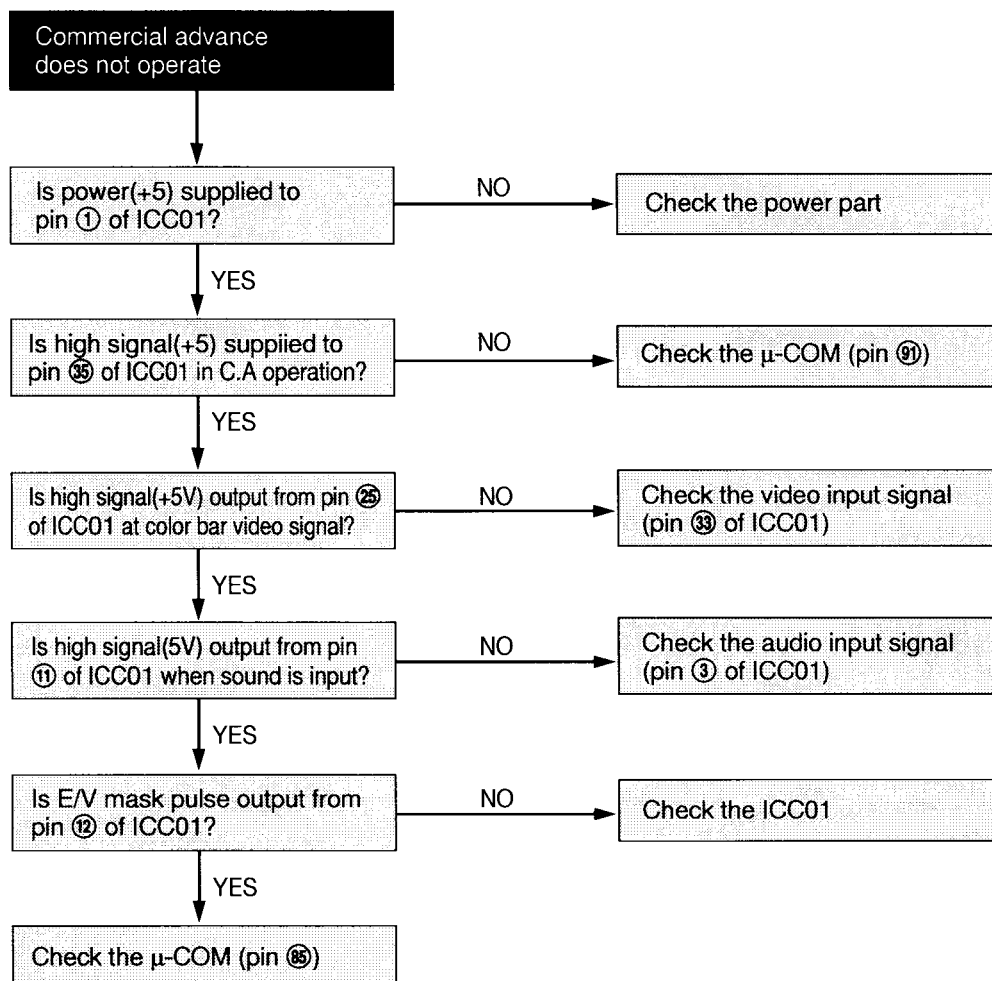


CBC Does Not Operate





Commercial Advance Does Not Operate





Movie Advance Does Not Operate

