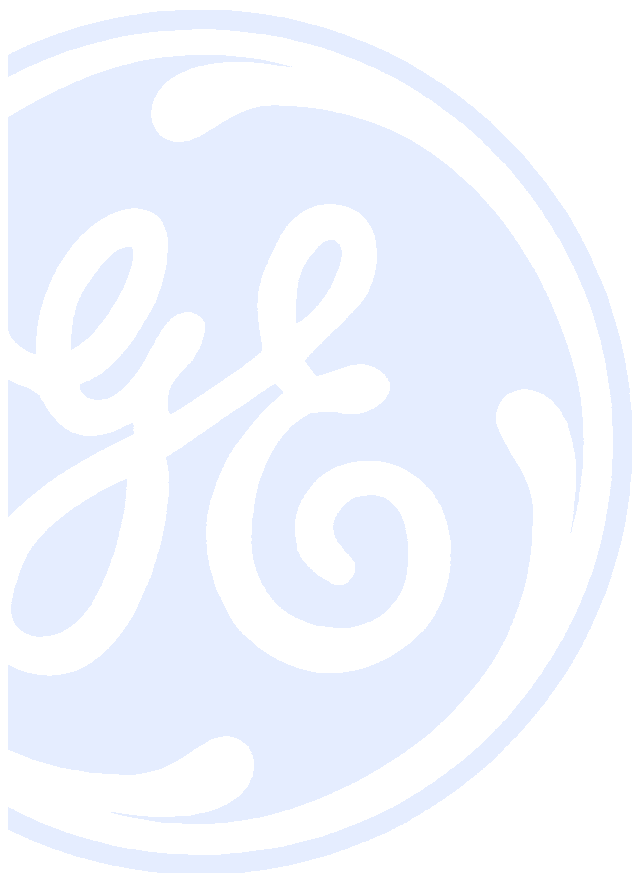


DISASSEMBLY SUBINDEX

Note: Install the parts replaced or reinstall the removed parts by the reverse procedure to disassembly when otherwise not specified.
Set the mechanism state switch to the eject mode (in the state that the arrow mark on the switch points the arrow mark of No. 1) when removing, replacing or reinstalling mechanical parts.

Top Cover Removal (Fig. 1)
Front Panel Removal (Fig. 2)
Bottom Cover Removal (Fig. 3)
F/L Door Removal (Fig. 4)
Deck Assembly Removal (Fig. 5)
Main PCB Assembly Removal (Fig. 6)
Tape Transport Mechanism Identification (Top View)
Tape Transport Mechanism Identification (Bottom View)
Front Loading Mechanism Identification (Top View)
Front Loading Mechanism Removal (Fig. 10)
Front Loading Mechanism Disassembly
(Figs. 11~15)
Replacement of the Drum Assembly/Earth Bracket (Fig. 16)
Reel Belt, Loading Rack, Loading Gears, and S/T Slant Pole Removal (Fig. 17, 18)
A/C Head Assembly Removal (Fig. 19, 19-1)
L/C Bracket Assembly Removal (Fig. 20)
Replacement of Pinch Lever Total Assembly Removal (Fig. 20)
Cam Gear, and F/L Rack Removal (Fig. 20)
S/T Main & Sub Brakes Removal (Fig. 23)
Tension Band Assembly Removal (Fig. 24, 25)
Capstan Motor Removal (Fig. 27)
Idler Plate/Reel Table Removal (Fig. 28)
FE Head Removal (Fig. 29)
Reel Gear Total Ass'y and Connect Plate Removal (Fig. 30)



FOR
P
R
O
S
C
A
Z

VR629HF / VR629HFB / VG4262 / VG4264

INSTRUMENT DISASSEMBLY



Top Cover Removal (Fig. 1)

Note: Perform all disassembly procedures in the order presented. When reassembling, use the reverse procedure. Make sure that all leads/wiring are routed correctly when reassembling.

1. Remove three (3) screws holding the top cover.
2. Carefully lift the back of top cover and slide it to the rear to remove it.

Remove three screws.

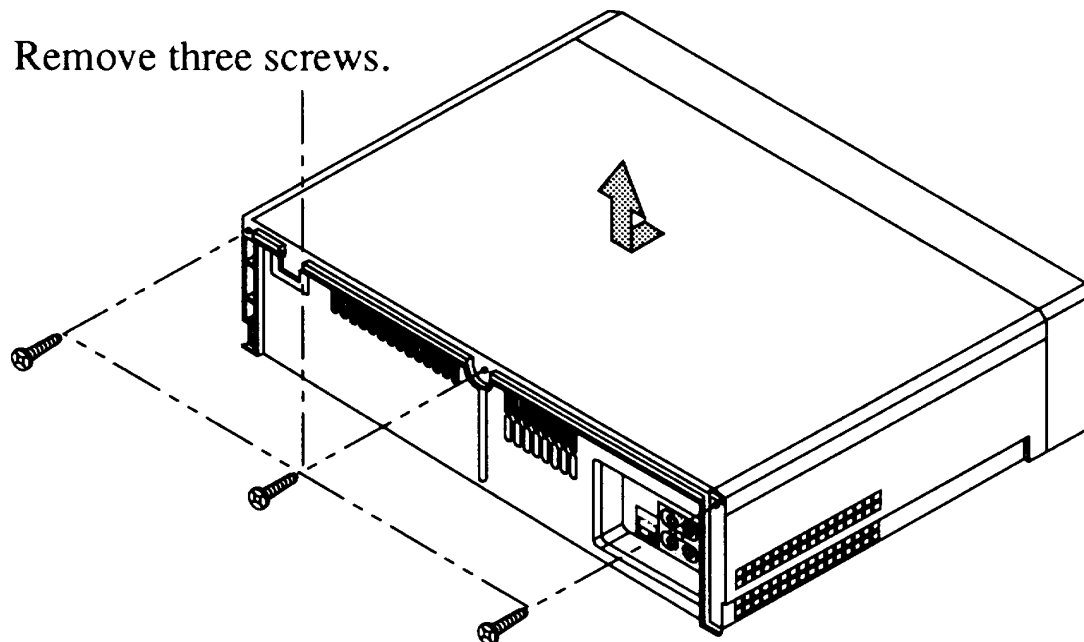


Fig. 1 Top Cover Removal



VR629HF / VR629HFB / VG4262 / VG4264

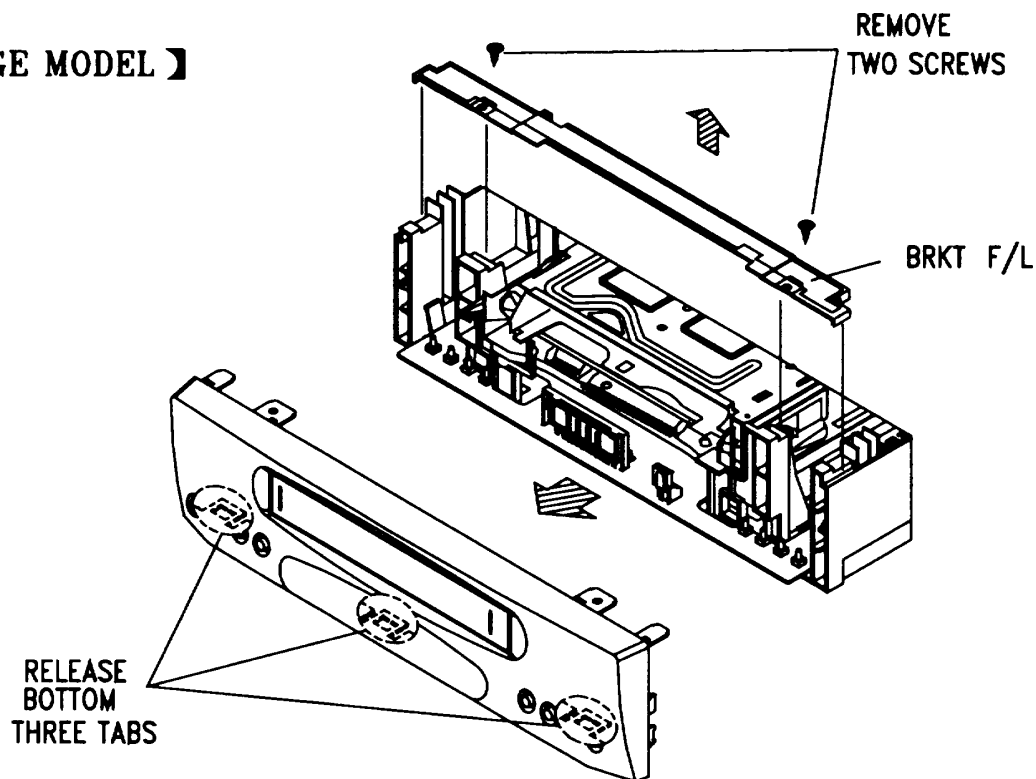
INSTRUMENT DISASSEMBLY



Front Panel Removal (Fig. 2)

1. Remove the top cover. (Fig. 1)
2. Remove two (2) screws securing front panel & F/L bracket.
3. Release seven (7) tabs holding the front panel.
(Release bottom tabs first.)
4. Remove the F/L bracket.
5. Remove the front panel.

【 GE MODEL 】



【 RCA MODEL 】

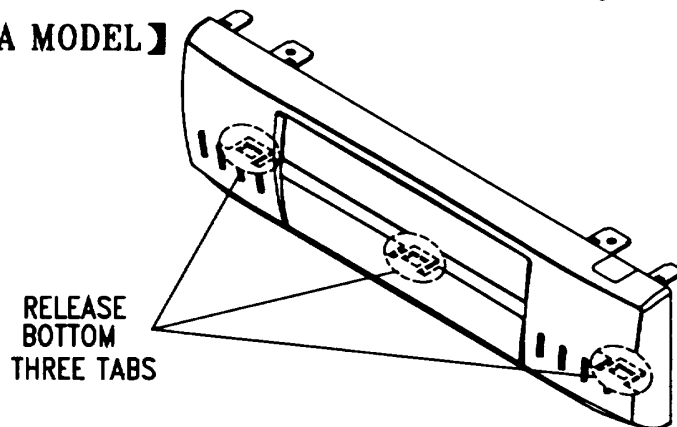


Fig. 2 Front Panel Removal





Bottom Cover Removal (Fig. 3)

1. Remove the top cover and the front panel.
2. Remove two (2) screws.
3. Lift out the bottom cover in the direction of the arrow.

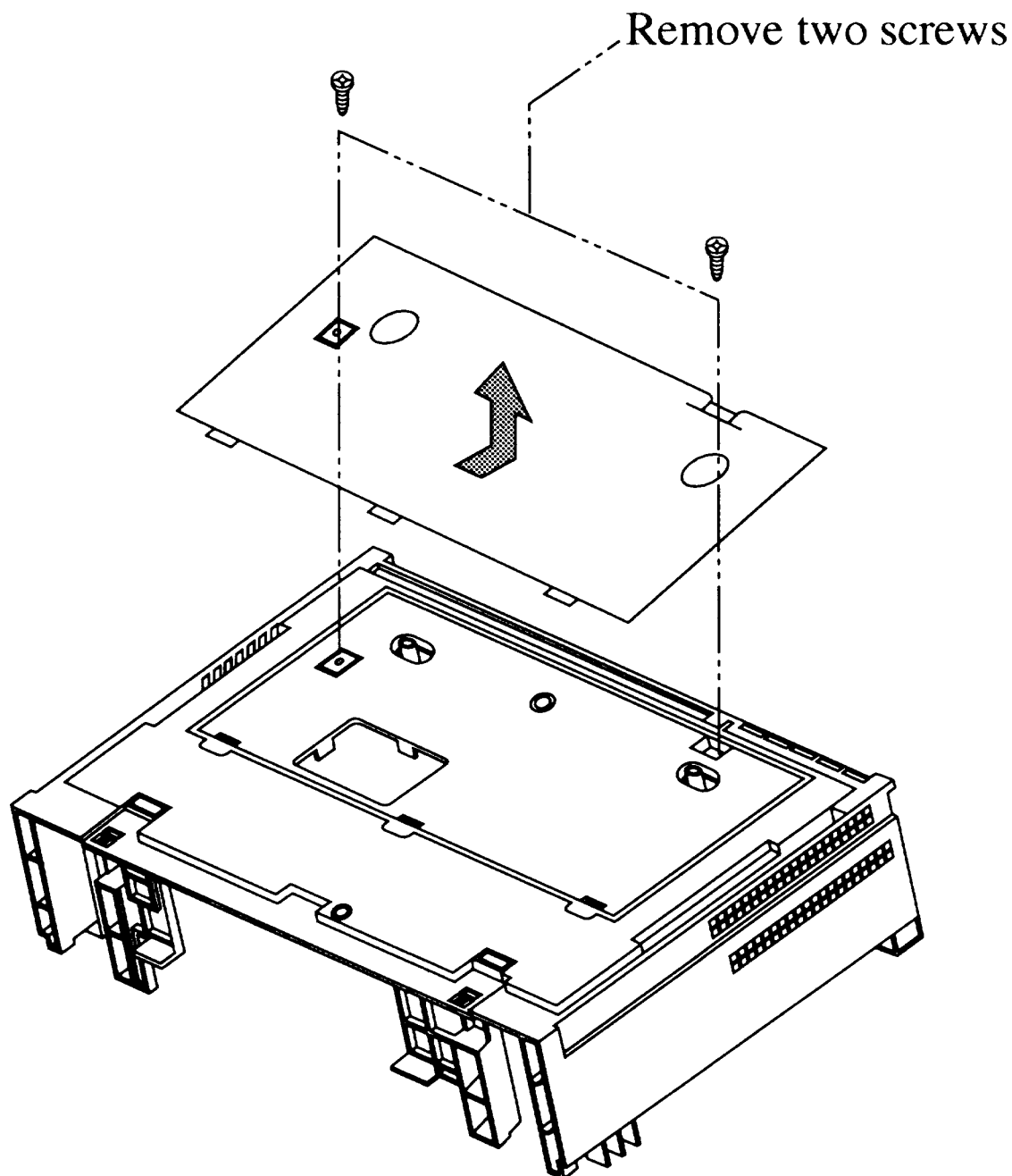


Fig. 3 Bottom Cover Removal



VR629HF / VR629HFB / VG4262 / VG4264

INSTRUMENT DISASSEMBLY



F/L Door Removal (Fig. 4)

1. Open the F/L door 90 degrees.
2. Remove the F/L door in the direction of the arrow.

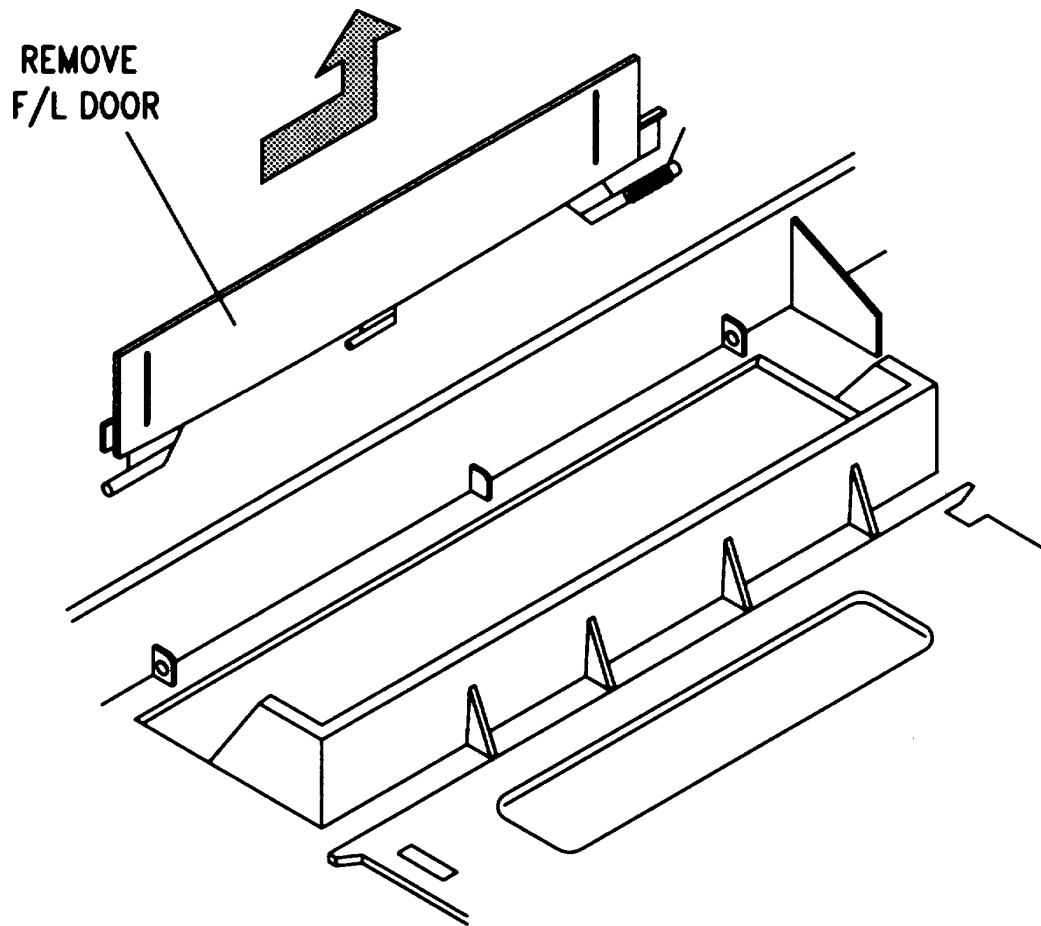
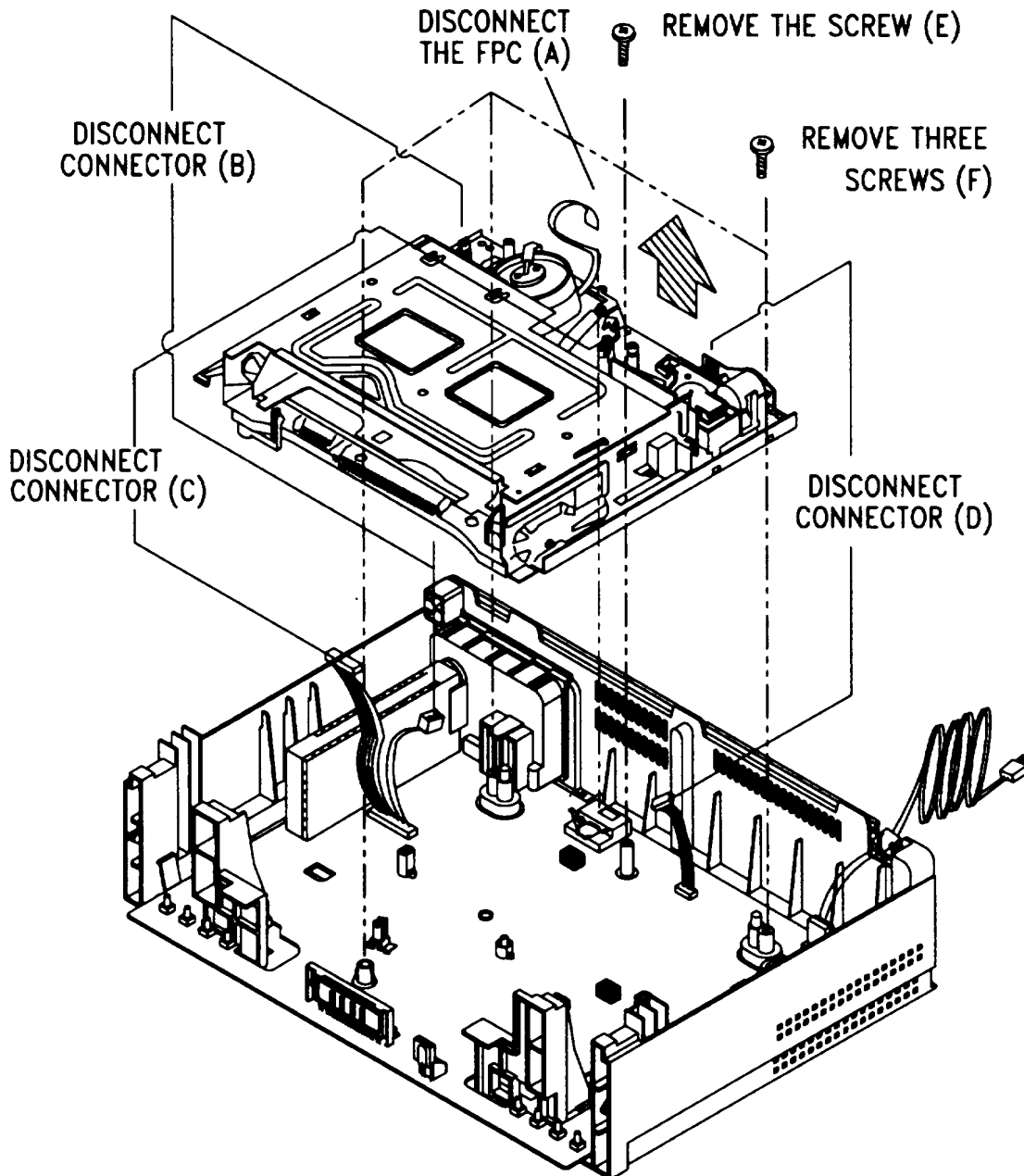


Fig. 4 F/L Door Removal



INSTRUMENT DISASSEMBLY**Deck Assembly Removal (Fig. 5)**

1. Remove the top cover, the front panel and the bottom cover.
2. Disconnect the FPC (A).
3. Disconnect three (3) connectors (B) (C) (D).
4. Remove one (1) screw (E) and three (3) screws (F).
5. Pull out the Deck Assembly in the direction of the arrow.

*Fig. 5 DECK Assembly Removal*

INSTRUMENT DISASSEMBLY



Main PCB Assembly Removal (Fig. 6)

1. Remove the top cover, the front panel, the bottom cover and the deck assembly. (Figs. 1 - 5)
2. Release two (2) tabs (A) and lift out the Main PCB in the direction of the arrow.

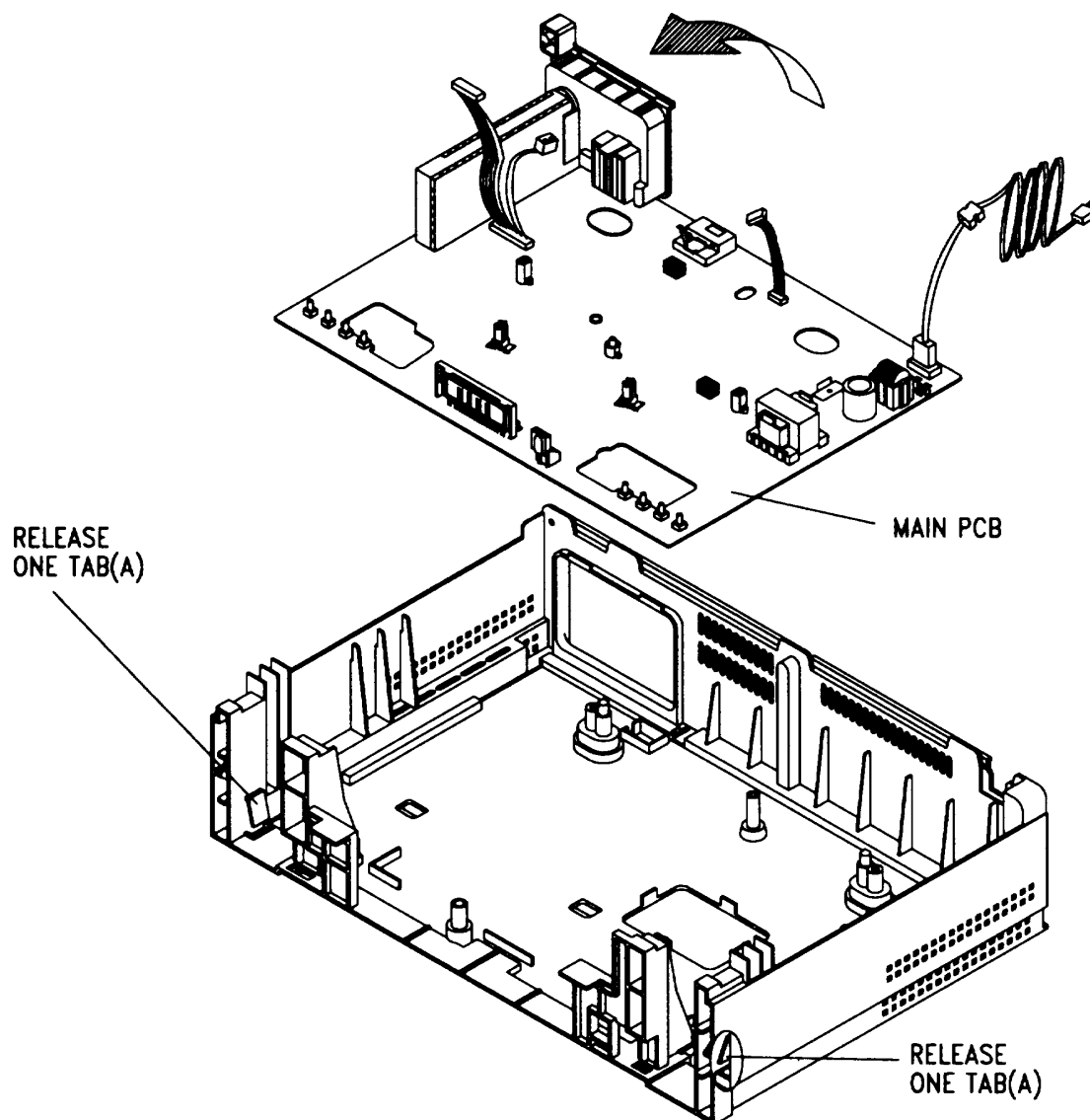


Fig. 6 Main PCB Assembly Removal





MECHANICAL DISASSEMBLY

Tape Transport Mechanism Identification (Top View)

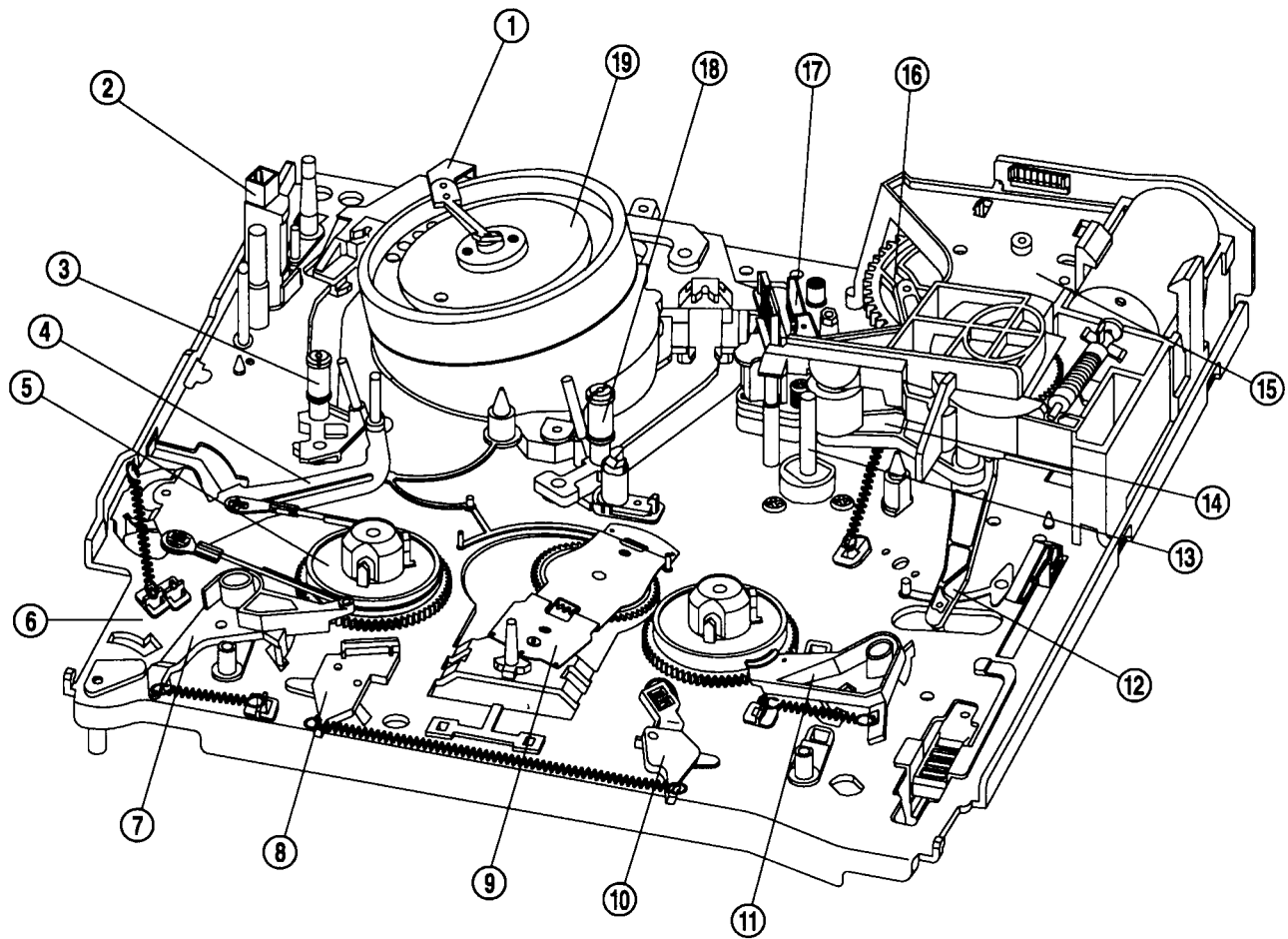


Fig. 7 Tape Transport Mechanism Identification - Top

- | | |
|----------------------------|-----------------------------|
| 1. Earth Bracket Ass'y | 12. Relay Lever |
| 2. FE Head | 13. Capstan Motor |
| 3. S-Slant Pole Ass'y | 14. Pinch Lever Total Ass'y |
| 4. Tension Lever Ass'y | 15. L/C Bracket Total Ass'y |
| 5. Reel Table | 16. Cam Gear |
| 6. Main Base Ass'y | 17. AC Head Total Ass'y |
| 7. S-Sub Brake Ass'y | 18. T-Slant Pole Ass'y |
| 8. S-Main Brake Ass'y | 19. Drum Total Ass'y |
| 9. Idler Plate Total Ass'y | |
| 10. T-Main Brake Ass'y | |
| 11. T-Sub Brake Ass'y | |





MECHANICAL DISASSEMBLY

Tape Transport Mechanism Identification (Bottom View)

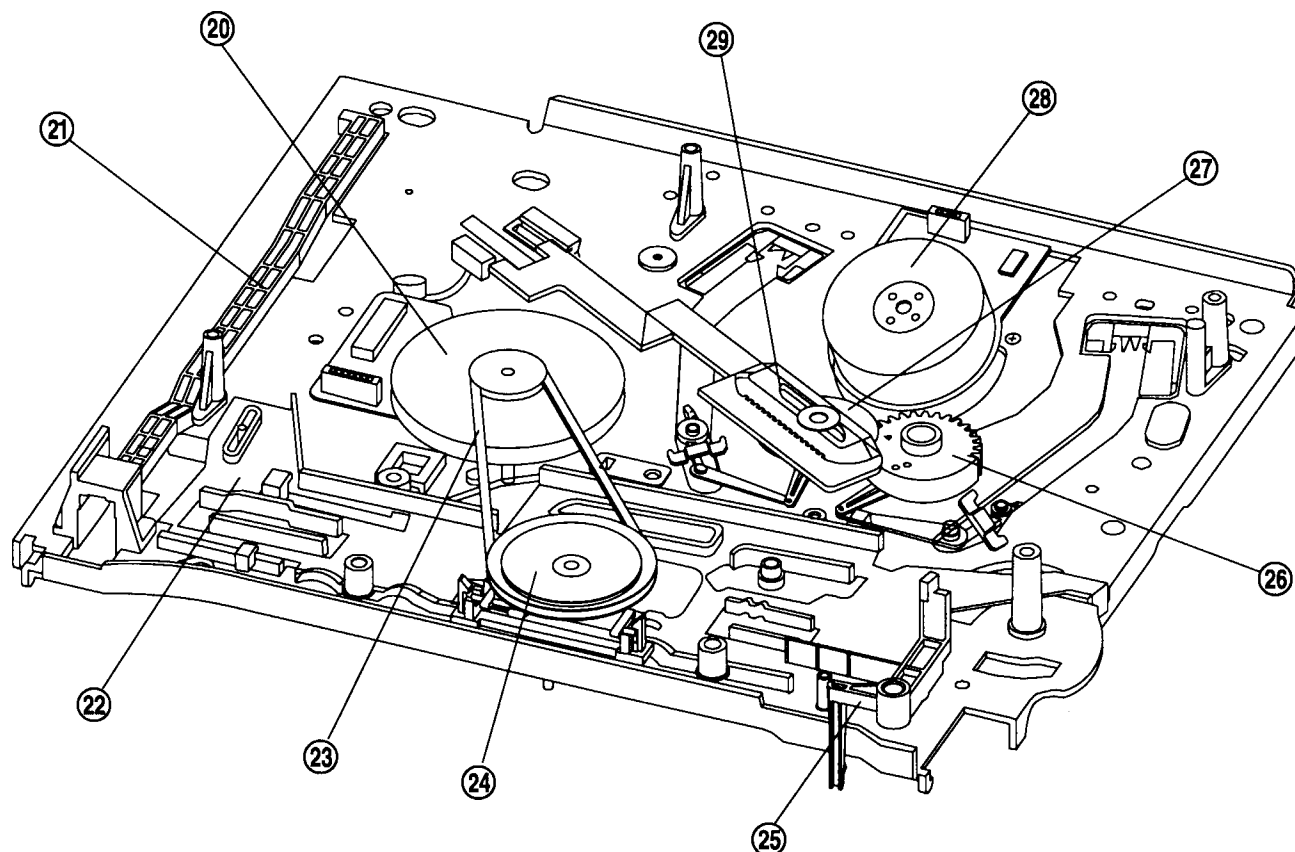


Fig. 8 Tape Transport Mechanism Identification - Bottom View

- 20. Capstan Motor
- 21. F/L Rack
- 22. Connect Plate
- 23. Reel Belt
- 24. Reel Gear Total Ass'y

- 25. Record Safety Lever
- 26. Loading Lever L
- 27. Loading Lever R
- 28. Drum Total Ass'y
- 29. Loading Rack





MECHANICAL DISASSEMBLY

Front Loading Mechanism Identification (Top View)

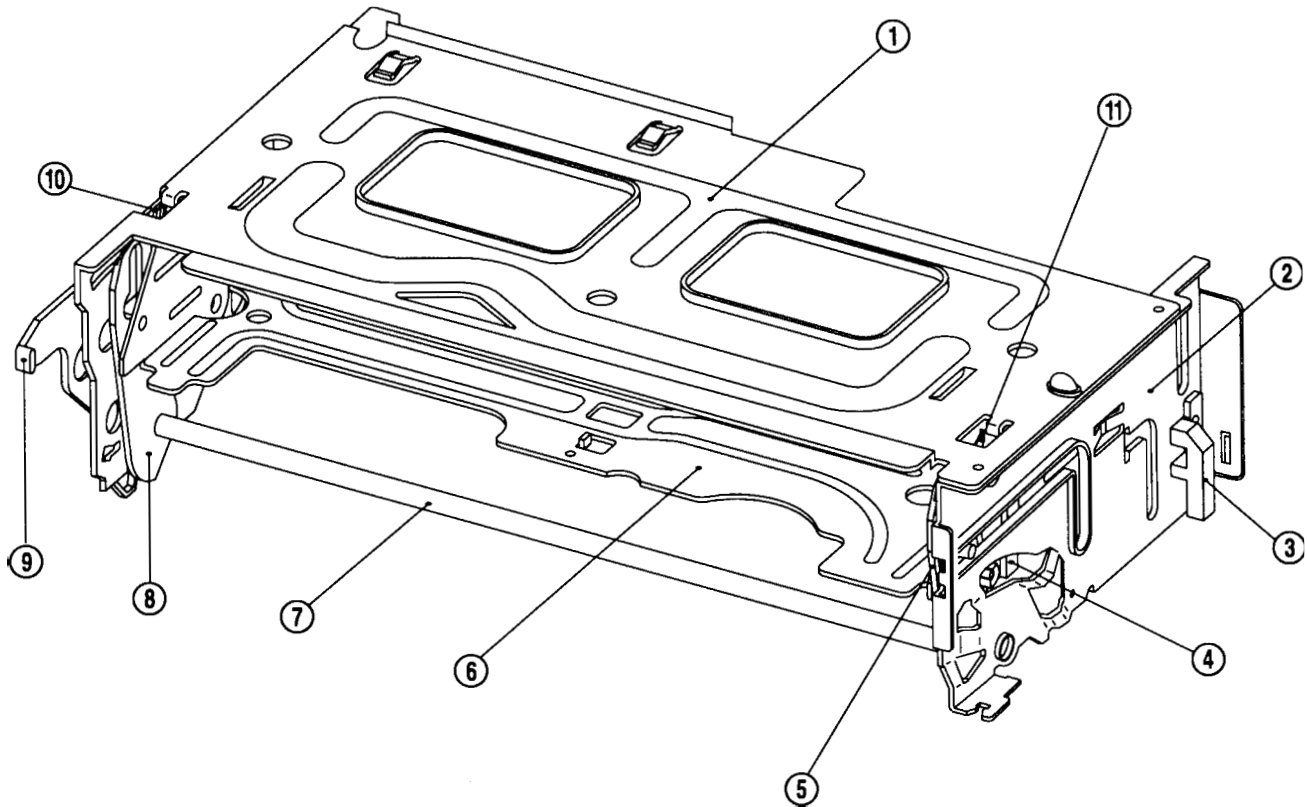


Fig. 9 Front Loading Mechanism Identification - Top View

- | | |
|--------------------|---------------------|
| 1. Top Plate Ass'y | 6. CST Holder Ass'y |
| 2. F/L Bracket R | 7. Loading Shaft |
| 3. Prism Link R | 8. Loading Lever R |
| 4. Release Lever | 9. Door Opener |
| 5. Loading Lever L | 10. Safety Lever |
| | 11. Safety Lever R |



MECHANICAL DISASSEMBLY



Front Loading Mechanism Removal (Fig. 10)

Note: The front loading mechanism must be in the eject position to remove it.

1. Remove two (2) screws holding the Front Loading Mechanism.
2. Lift the rear of the cassette loading mechanism (hole parts for screw) to separate it from the Main Base.

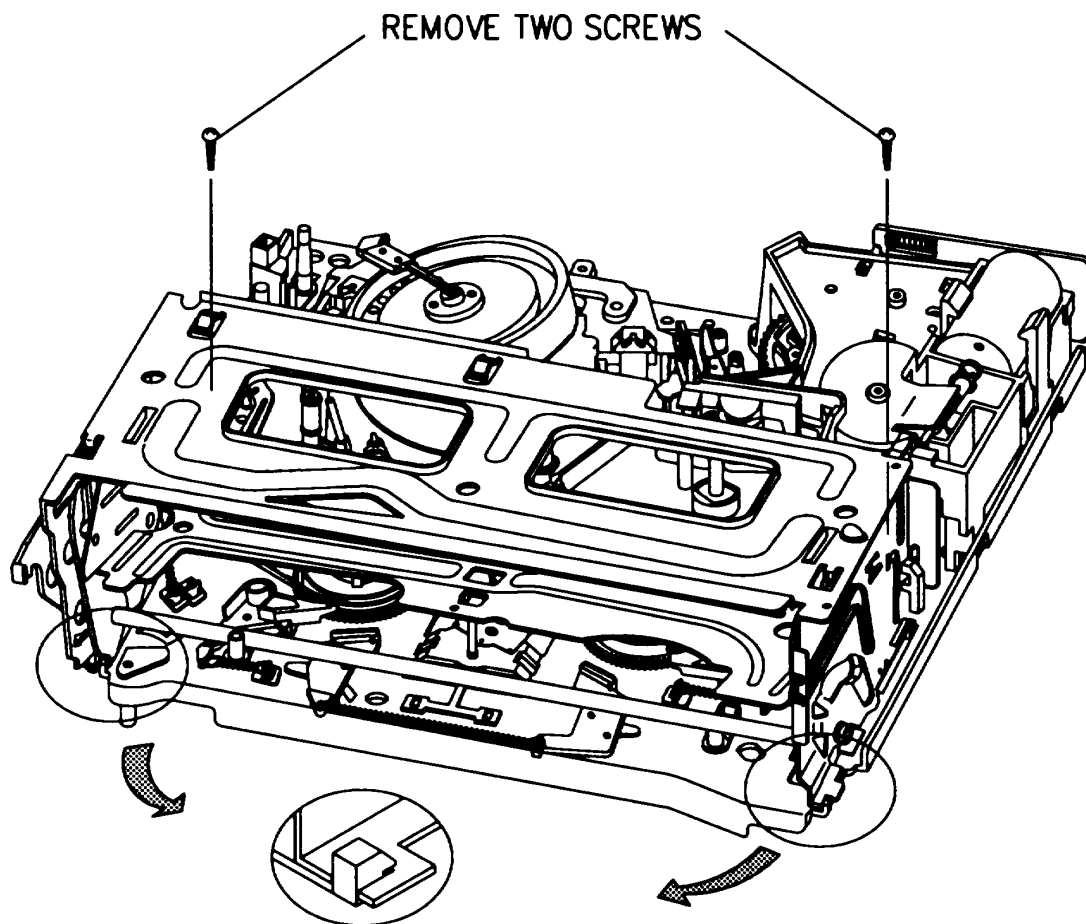
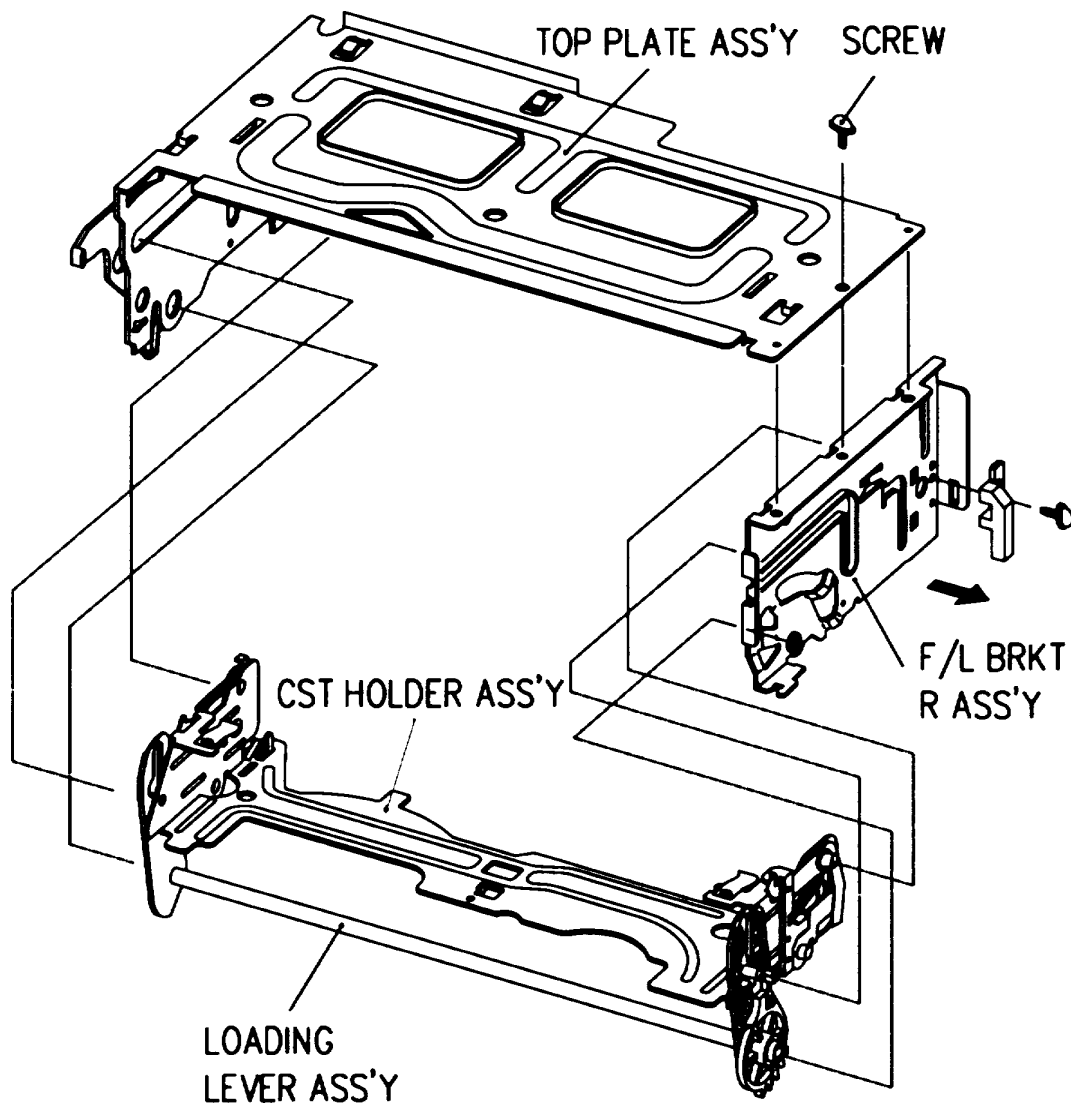


Fig. 10 Front Loading Mechanism Removal



MECHANICAL DISASSEMBLY**Front Loading Mechanism Disassembly**
(Figs. 11~15)

1. Remove the front loading mechanism.
2. Remove one (1) screw holding the F/L bracket R and move the F/L bracket R in the direction of arrow to separate it from the top plate and the cassette holder assembly.
3. Remove the cassette holder assembly.

*Fig. 11 Front Loading Mechanism Disassembly*

VR629HF / VR629HFB / VG4262 / VG4264 MECHANICAL DISASSEMBLY



Front Loading Mechanism Disassembly (Continued)

4. Remove one (1) screw holding the prism link R and remove the prism link R from the F/L bracket R.

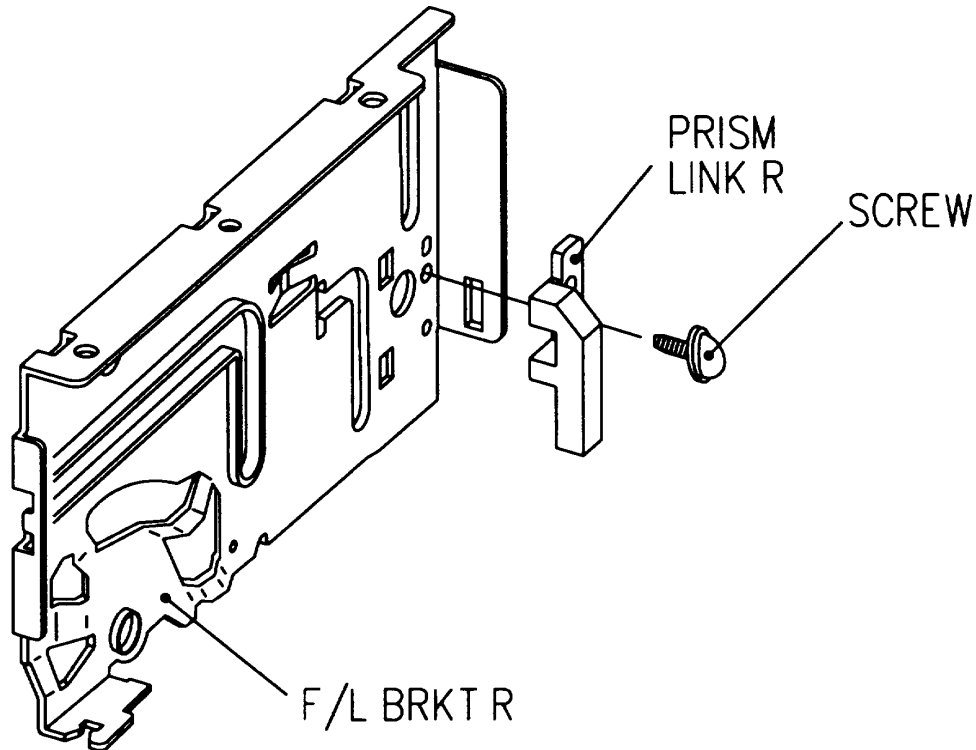


Fig. 12 F/L Brkt Disassembly



VR629HF / VR629HFB / VG4262 / VG4264 MECHANICAL DISASSEMBLY



Front Loading Mechanism Disassembly (Continued)

5. Remove one (1) screw holding the prism link L.
6. Release hook B by pushing it in the direction of the arrow and remove the door opener.
7. Press the linked section of the loading lever assembly in the direction of the arrow and remove the loading lever assembly.

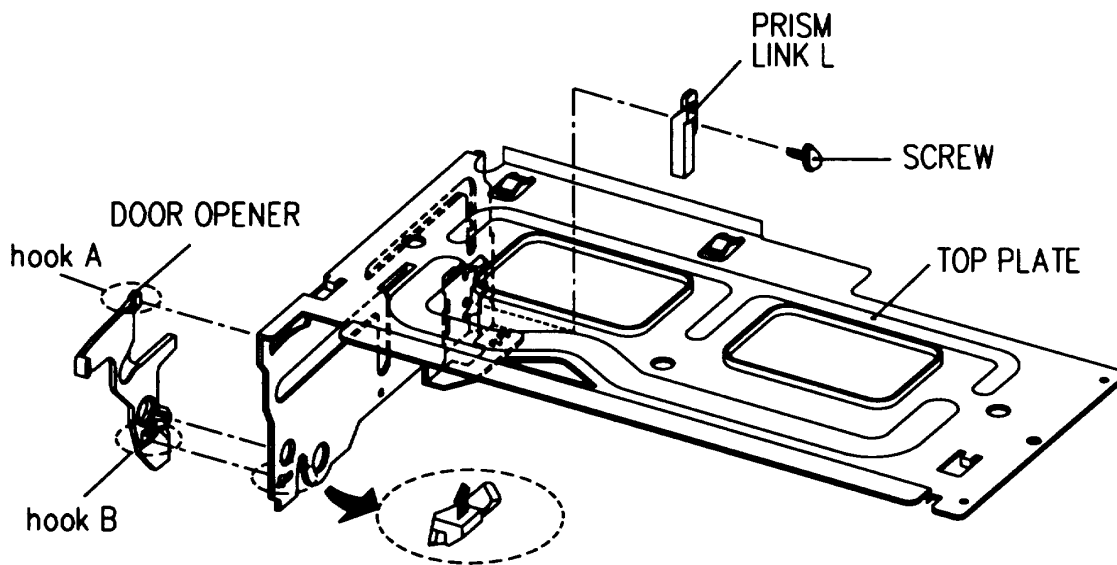


Fig. 13 Top Plate Disassembly



MECHANICAL DISASSEMBLY**Front Loading Mechanism Disassembly (Continued)**

8. Remove the safety spring between the safety lever and the cassette holder.
9. Remove the release spring between the release lever and the safety lever R.

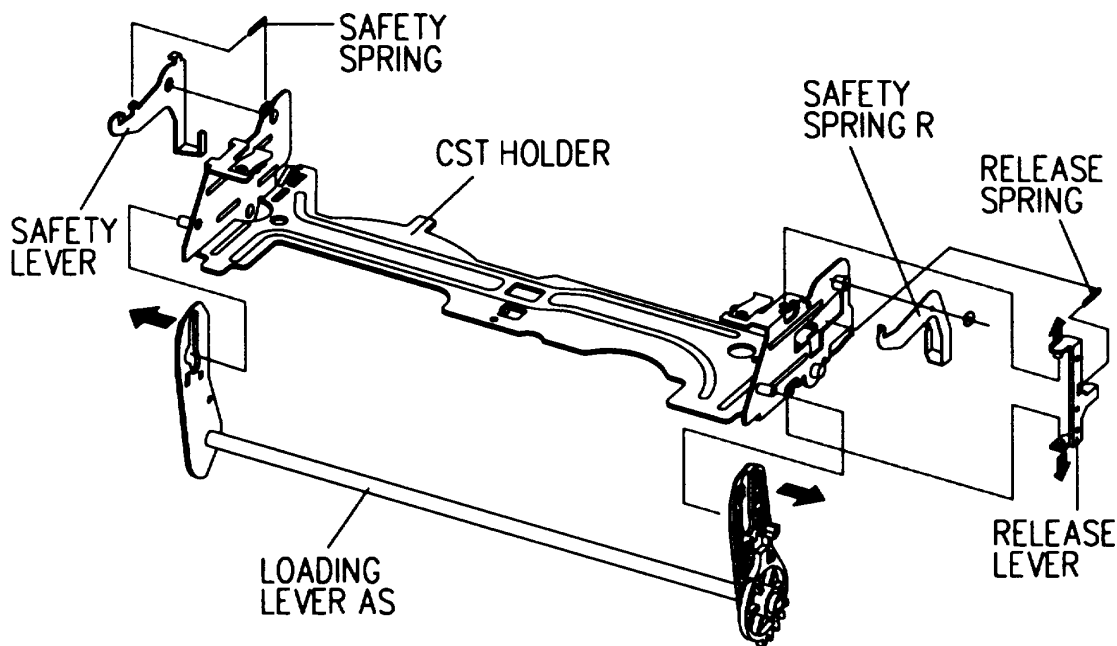


Fig. 14 Loading Lever Ass'y Disassembly



VR629HF / VR629HFB / VG4262 / VG4264

MECHANICAL DISASSEMBLY



Front Loading Mechanism Disassembly (Continued)

Note: Reassemble the cassette loading mechanism using the reverse procedures. Confirm that the two (2) bosses on the left side of the cassette holder are inserted into the groove in the left side of the top plate. Insert the two (2) bosses on the right side into the F/L bracket R.

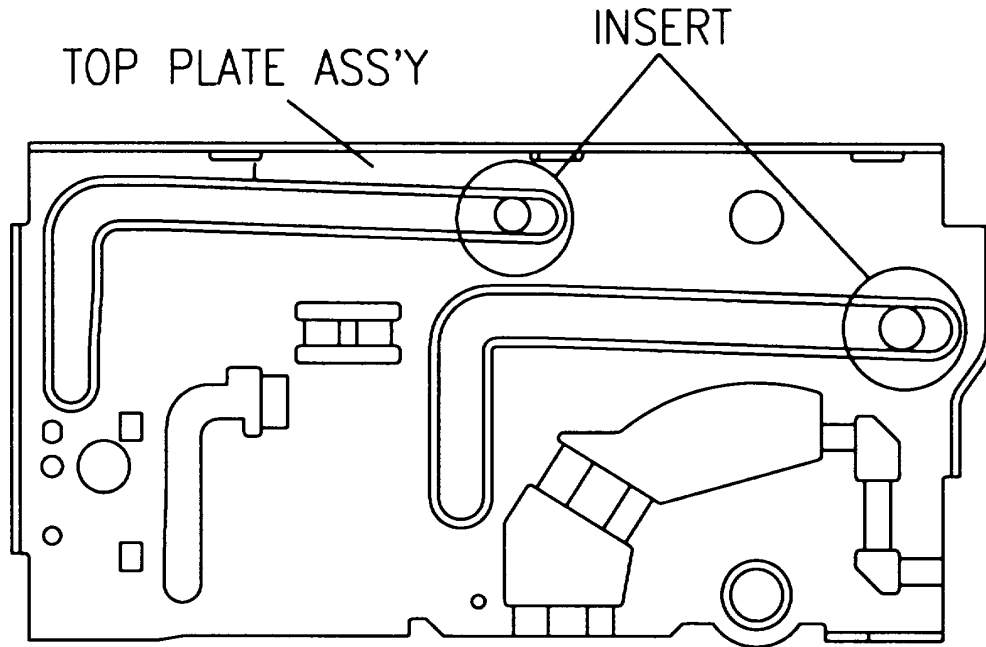


Fig. 15 F/L Brkt R



MECHANICAL DISASSEMBLY**Replacement of the Drum Assembly/Earth Bracket (Fig. 16)**

1. Remove three (3) screws (3).
2. Remove the earth bracket (5).
3. Carefully lift the drum assembly (4) from the deck mechanism taking care not to damage or touch the video heads.

Note: After reassembling the assembly, confirm that the tape runs smoothly and confirm all tape path adjustment procedures in the "Mechanical Adjustment" section of this service publication.

*** Screws are different**

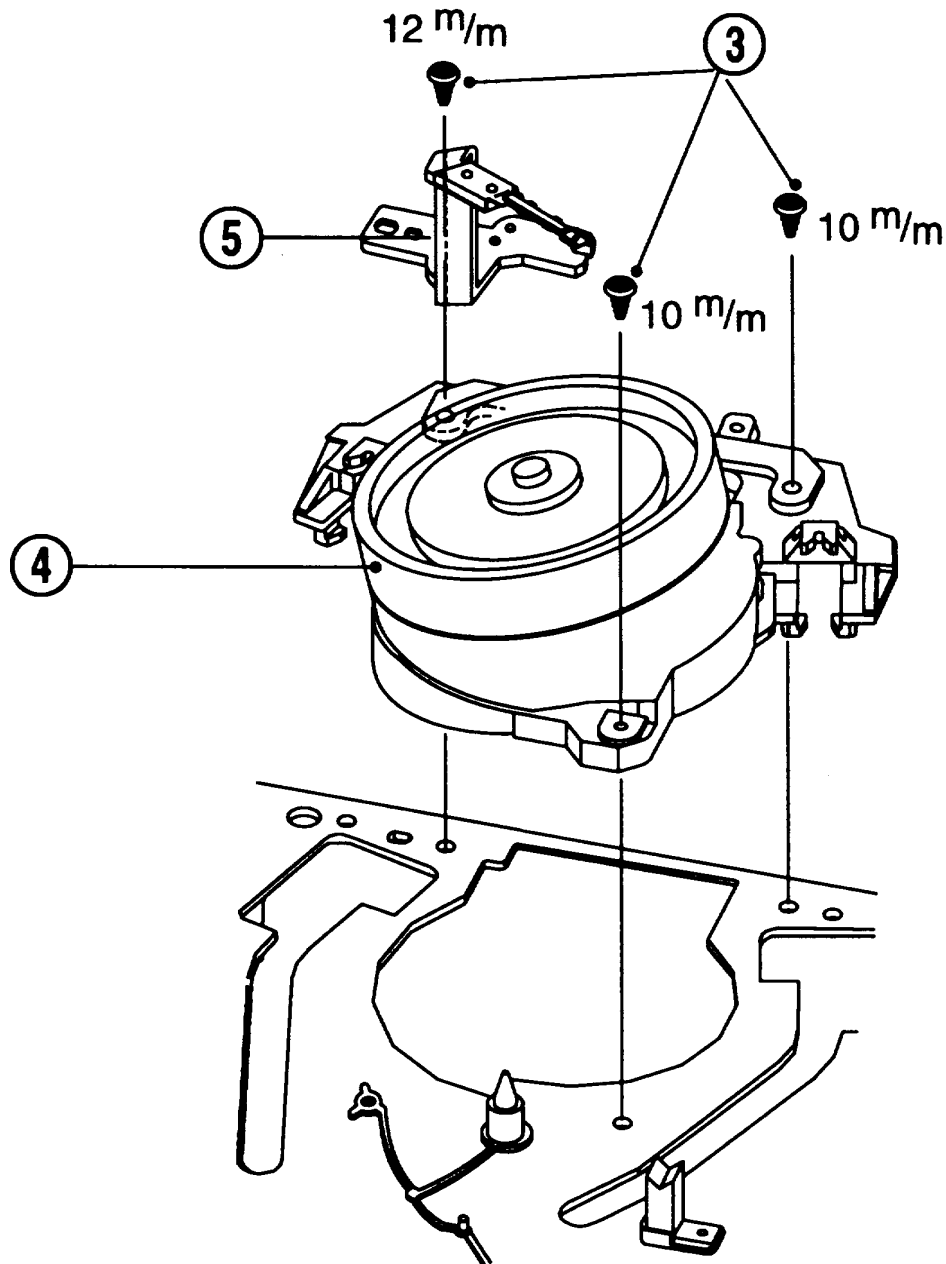


Fig. 16 Replacement of the Drum Total Ass'y and Earth Brkt Ass'y



MECHANICAL DISASSEMBLY**Reel Belt, Loading Rack, Loading Gears, and S/T Slant Pole Removal (Fig. 17, 18)**

1. Turn the Deck Mechanism upside down and remove the reel belt.
2. Remove one (1) poly washer (1) and remove the loading rack (2) by rotating it counterclockwise.
3. Remove loading gear R (3) (black) and loading gear L (4) (white).
4. Remove the S and T slant poles (5) and (6) by pulling them in the direction of the arrow.

Note:

- Take care not to get grease on the guide rollers.
- When reinstalling, realign the gears as shown in Fig. 18.

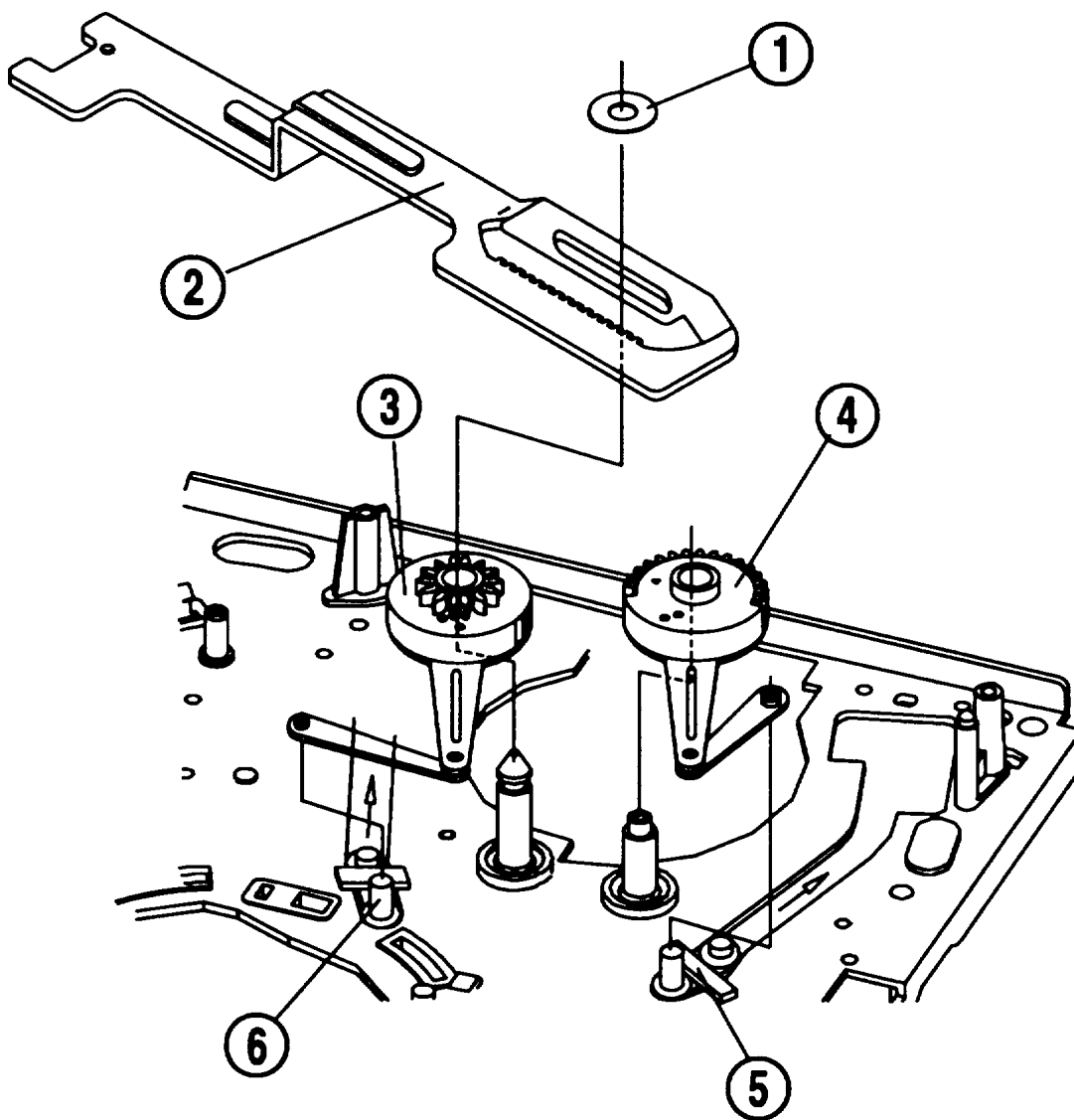


Fig. 17 Reel Belt, Loading Rack, Loading Gears, S/T Slant Pole Removal



MECHANICAL DISASSEMBLY

Reel Belt, Loading Rack, Loading Gears, and S/T
Slant Pole Removal (Continued)

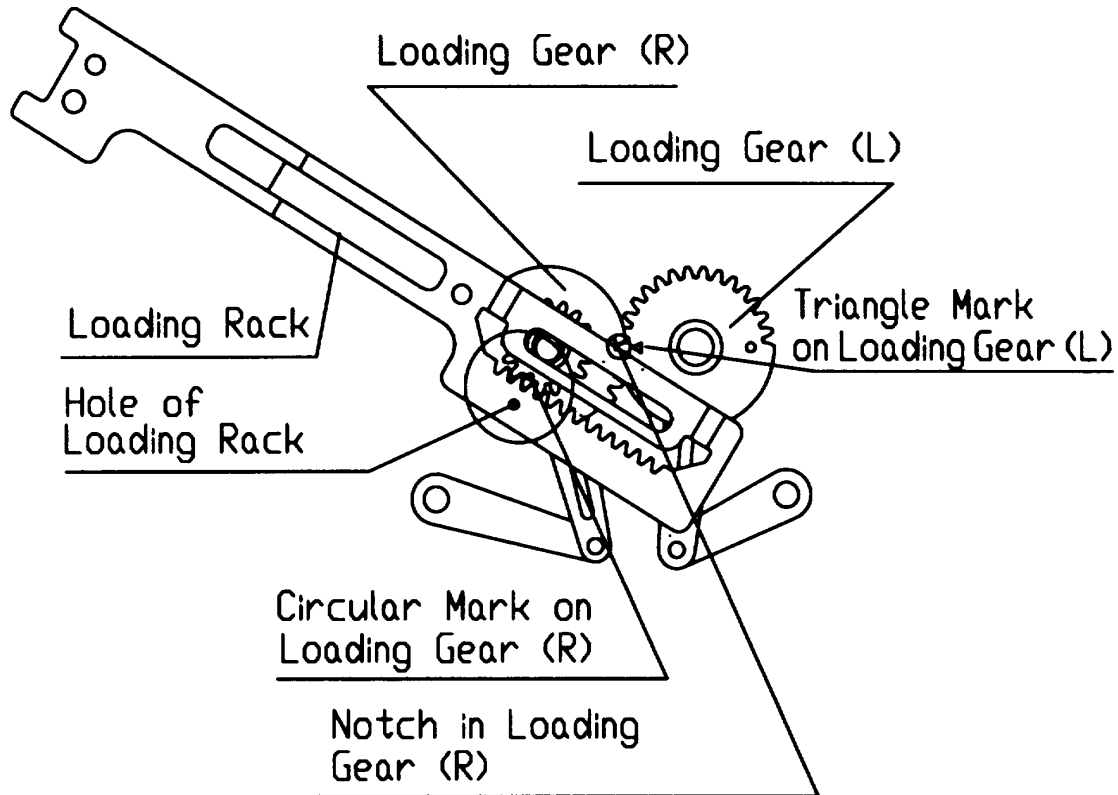


Fig. 18 Loading Gears/Loading Rack Alignment



MECHANICAL DISASSEMBLY**A/C Head Assembly Removal (Fig. 19, 19-1)**

1. Remove one (1) nut hex from the A/C head assembly (2). (Fig. 19)
2. Remove the A/C head assembly (2) and remove the A/C head spring (3) from the A/C head assembly (2). (Fig. 19-1)

Note: After reinstalling, perform all A/C Head adjustment procedures and all tape path alignment procedures in publication.

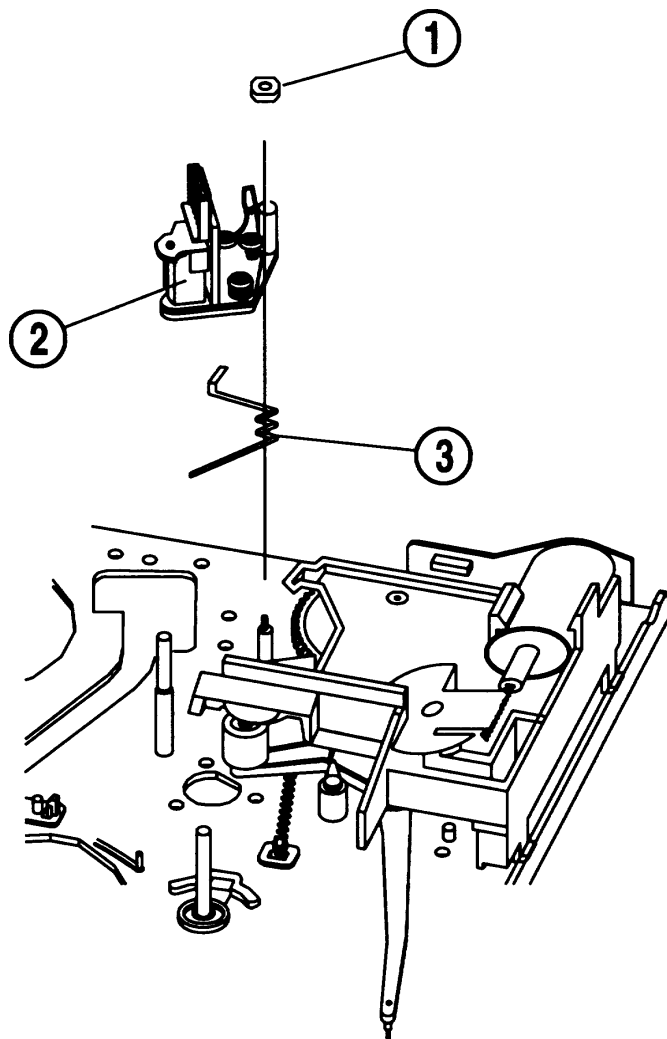


Fig. 19 A/C Head Assembly Removal

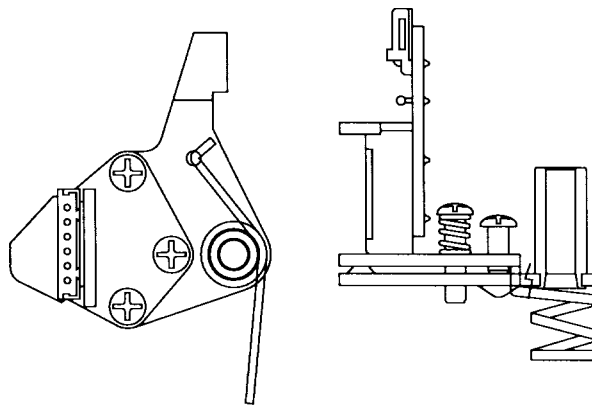


Fig. 19-1 A/C Head Assembly Alignment



MECHANICAL DISASSEMBLY**L/C Bracket Assembly Removal (Fig. 20)**

1. Remove one (1) screw (1) from the L/C bracket assembly (2) and remove the L/C bracket assembly (2) from the deck mechanism.

Notes: When reassembling, refer to Fig. 21 for alignment instructions.

Replacement of Pinch Lever Total Assembly Removal (Fig. 20)

1. Remove one (1) washer (3).
2. Unhook the pinch spring (4) from the main base (5) and remove the pinch lever total assembly (9).

Note: Take care not to get grease or oil on the outside surface of the pinch roller (10).

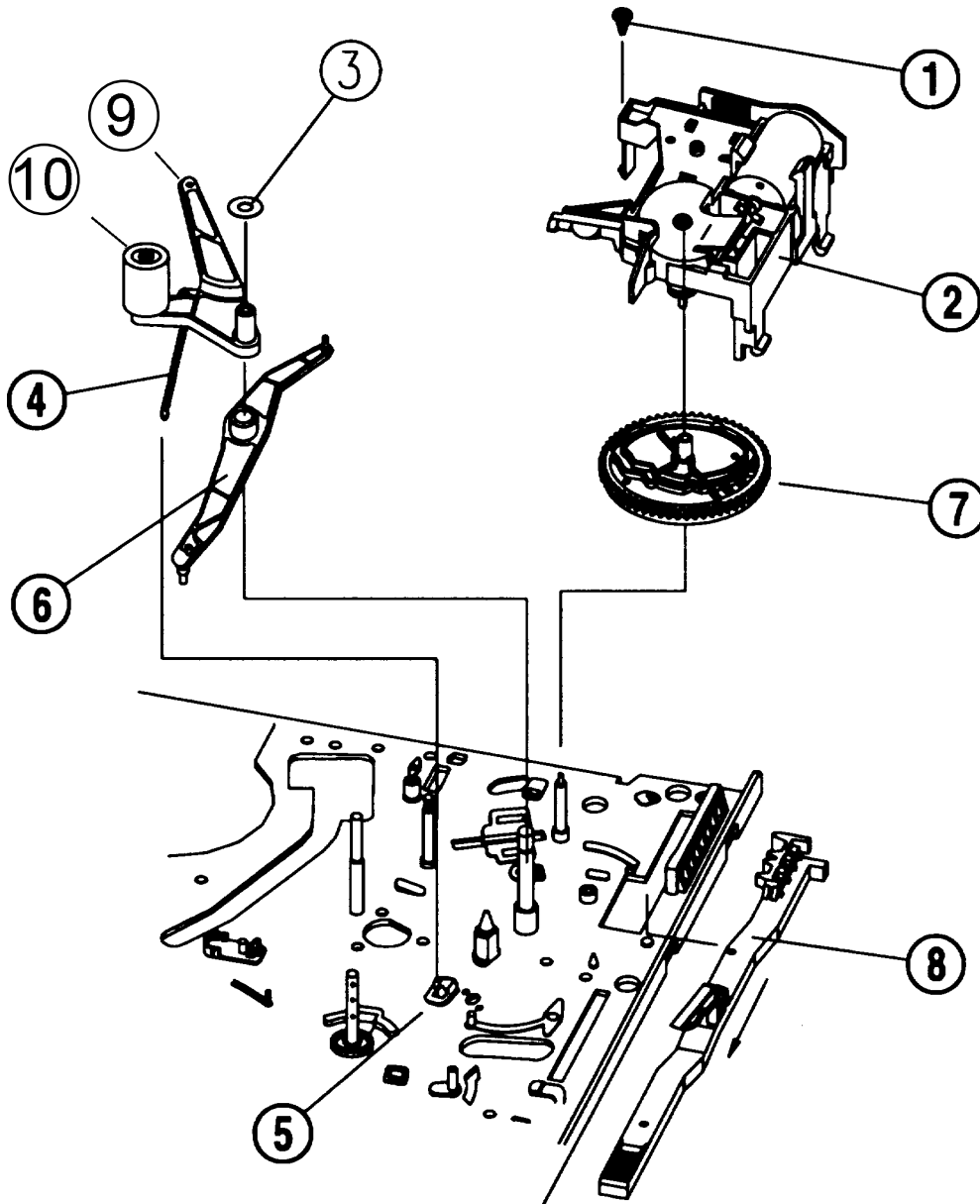


Fig. 20 Replacement of L/C Bracket Total Assembly/ Pinch Lever Total Assembly/ Cam Gear/Relay Lever/F/L Rack



MECHANICAL DISASSEMBLY**Cam Gear, and F/L Rack Removal (Fig. 20)**

1. Remove the cam gear (7) from the deck mechanism.
2. Remove the relay lever (6) from the main base (5).
3. Remove the F/L rack (8) from the deck mechanism.

Note: When reassembling, align the assembly as shown in Fig. 21 & 22.

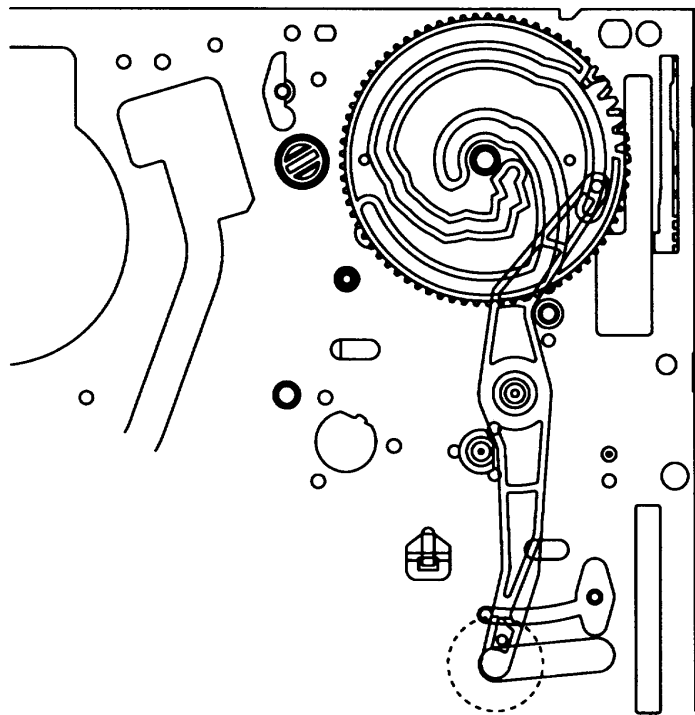


Fig. 21 L/C Bracket Assembly Alignment

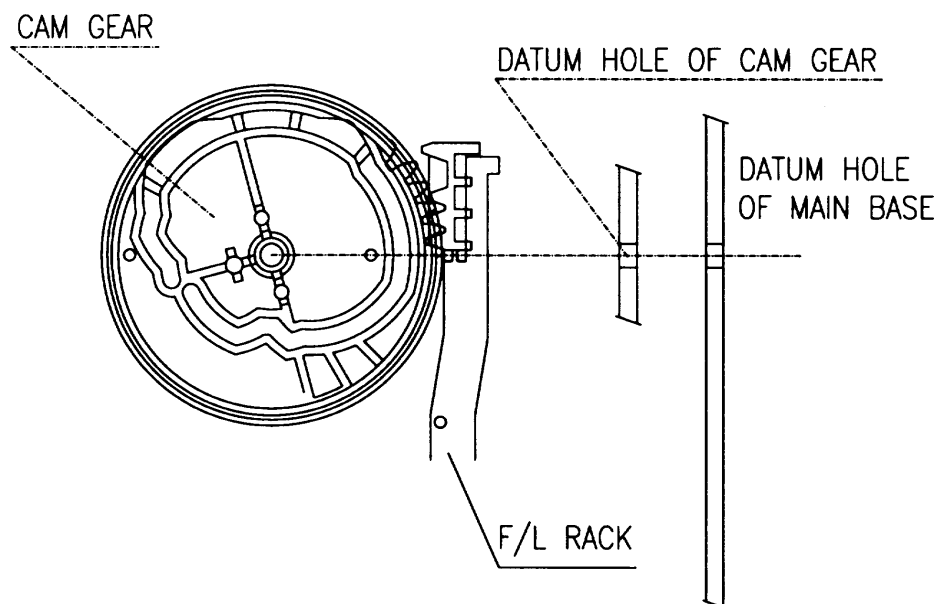
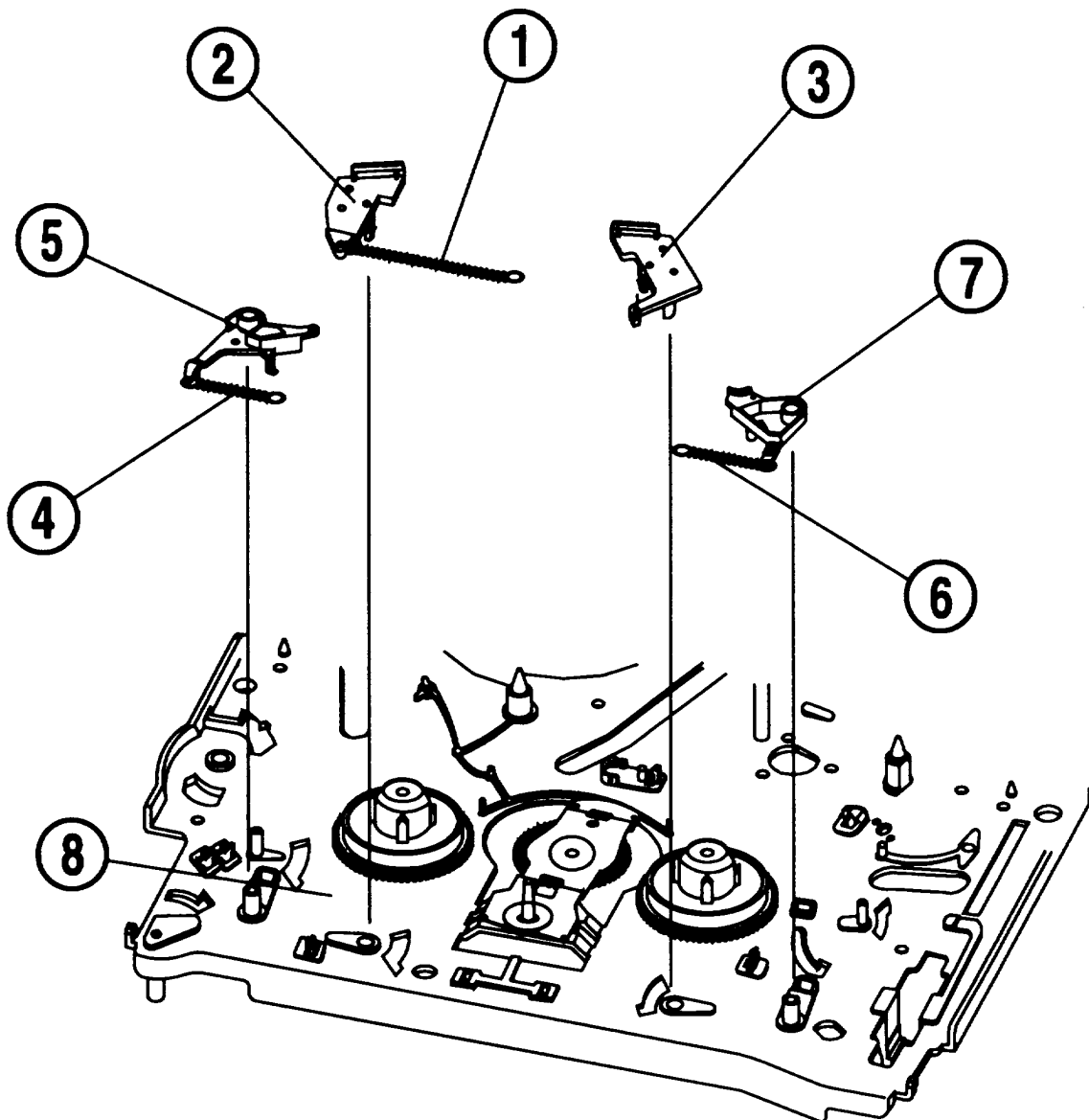


Fig. 22 Cam Gear/F/L Rack Alignment



MECHANICAL DISASSEMBLY**S/T Main & Sub Brakes Removal (Fig. 23)**

1. Unhook the main brake spring (1) from the T main brake lever (3).
2. Disconnect the main brake lever assembly (2) and T main brake lever (3) from the main base (8).
3. Unhook the S sub brake spring (4) from the main base and disconnect the S sub brake lever assembly (5) from the main base (8).
4. Unhook the T sub brake spring (6) from the main base and disconnect the T sub brake lever assembly (7) from the main base (8).

*Fig. 23 Main Plate Removal*

VR629HF / VR629HFB / VG4262 / VG4264

MECHANICAL DISASSEMBLY



Tension Band Assembly Removal (Fig. 24, 25)

1. Remove the tension spring (2) from the main base (1). (Fig. 24)
2. Turn the deck mechanism upside down. (Fig. 25)
3. Release the tab of the hook "A" and separate the tension band assembly (3). (Fig. 25)

Note:

- After reassembling, adjust the position of the tension pole as shown in Fig. 26.
- Avoid getting grease or oil on the felt section of the band brake.

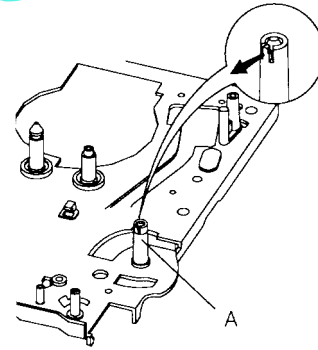


Fig. 25 - Tension Band Assembly Removal

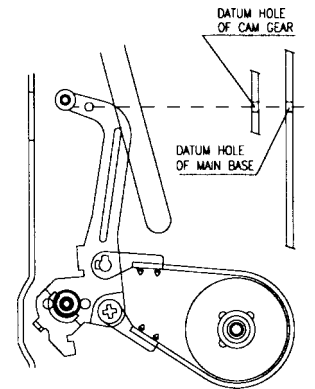


Fig. 26 - Tension Band Assembly Alignment with Main Base

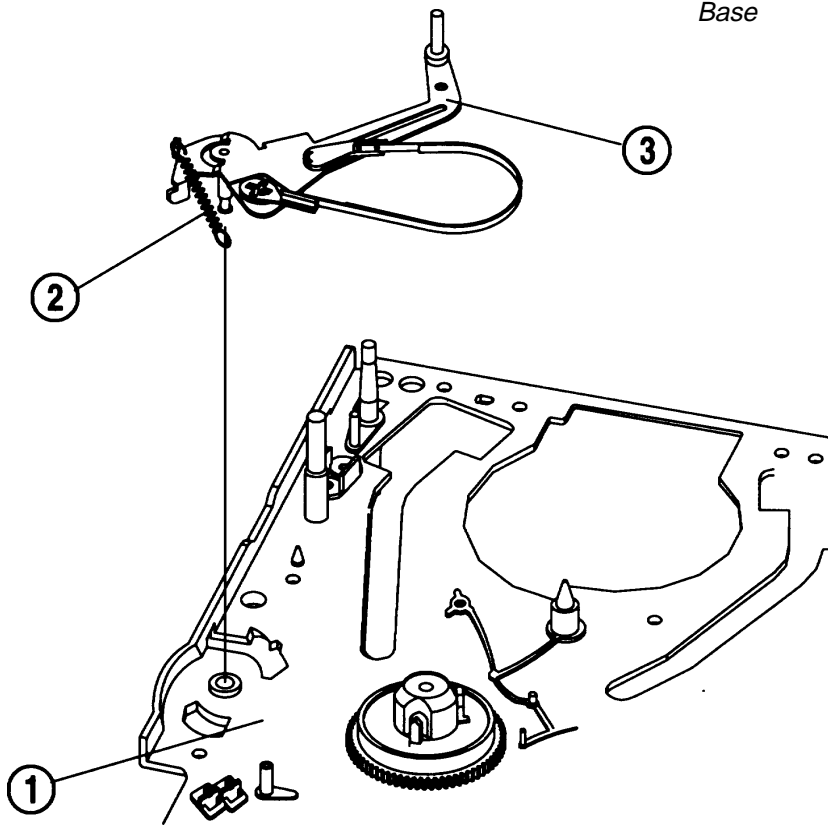


Fig. 24 Tension Band Assembly Removal



MECHANICAL DISASSEMBLY



Capstan Motor Removal (Fig. 27)

1. Remove three (3) screws and remove the capstan motor.

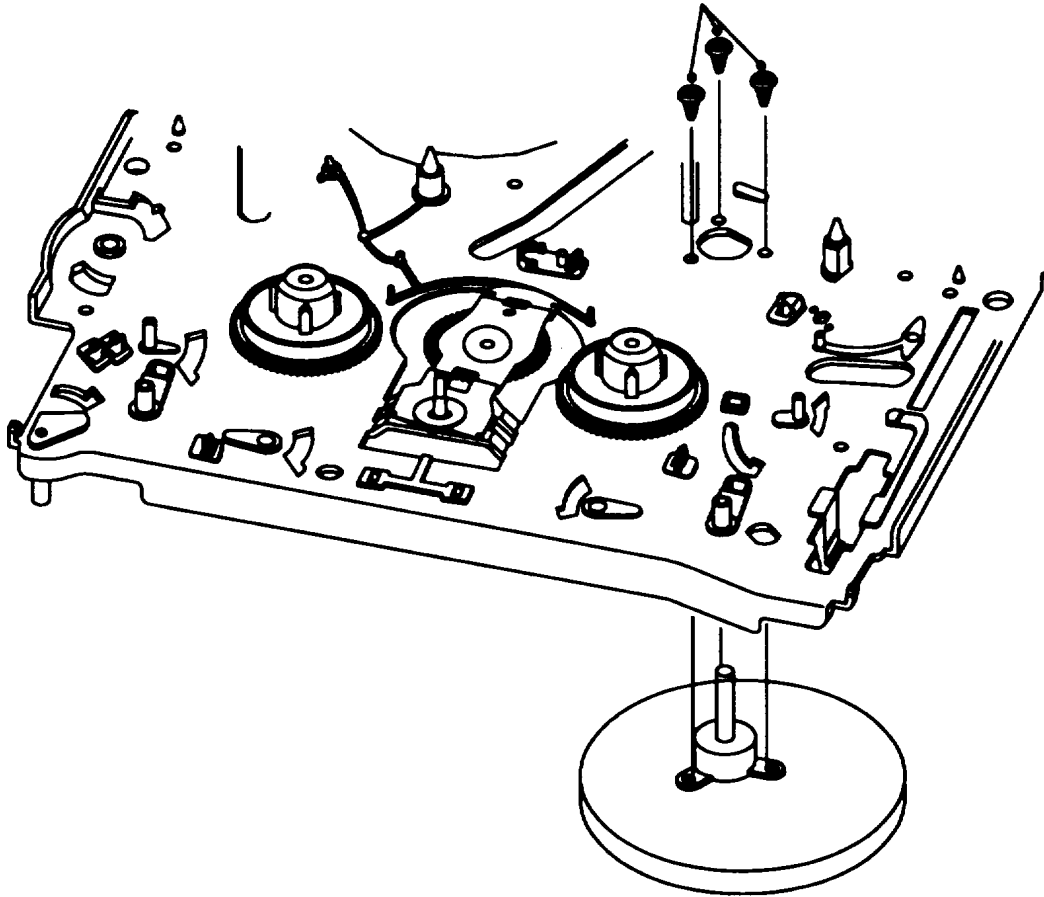
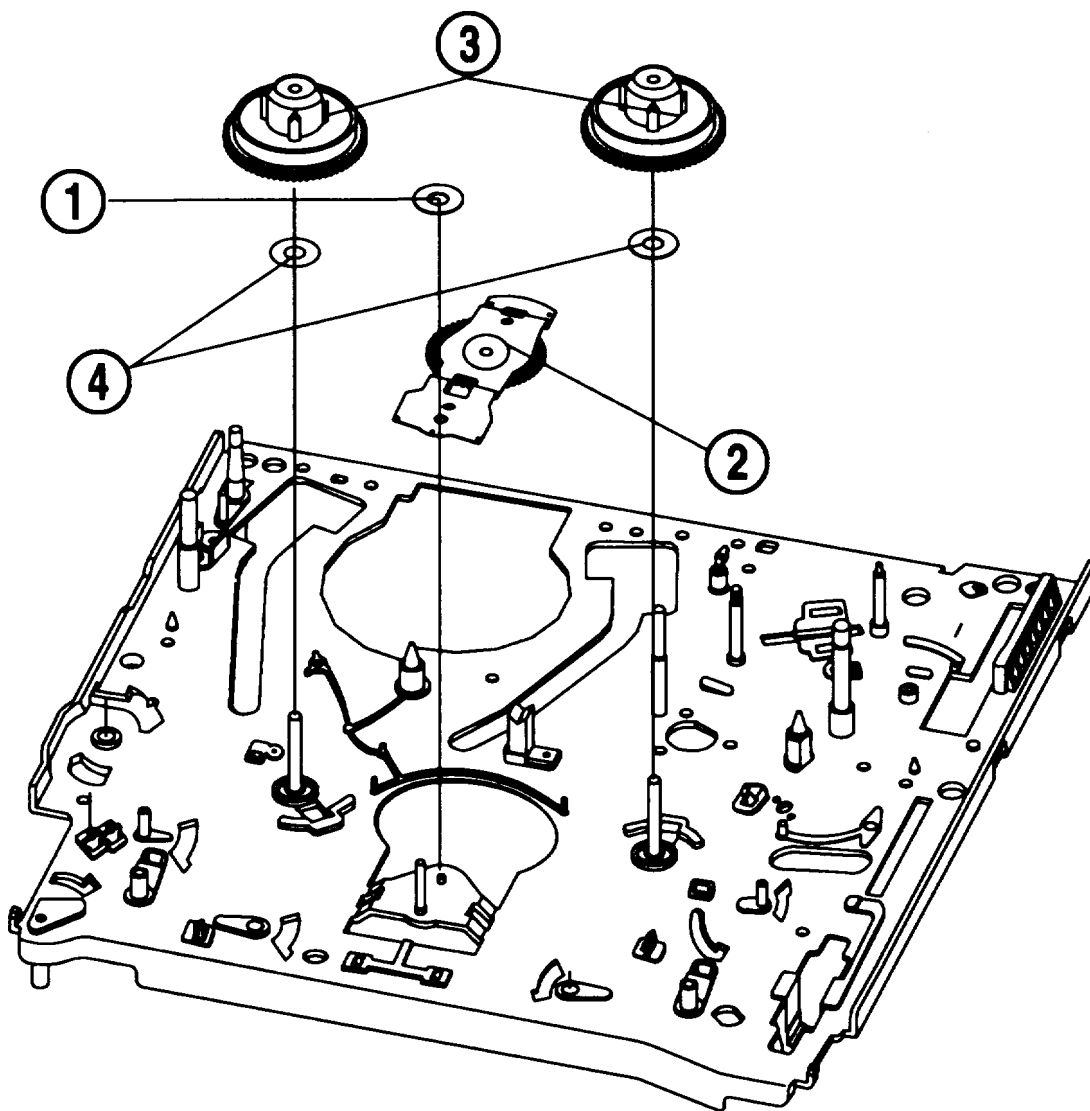


Fig. 27 Capstan Motor Removal



MECHANICAL DISASSEMBLY**Idler Plate/Reel Table Removal (Fig. 28)**

1. Remove one (1) polywasher (1) from the idler plate (2) and remove the idler plate (2) from the main base.
2. Remove the reel tables (3) and the two (2) polysliders (4) from the deck mechanism.

*Fig. 28 Idler Plate/Reel Table Removal*



FE Head Removal (Fig. 29)

1. Remove one (1) screw (1) and lift the FE head (2) from the main base.

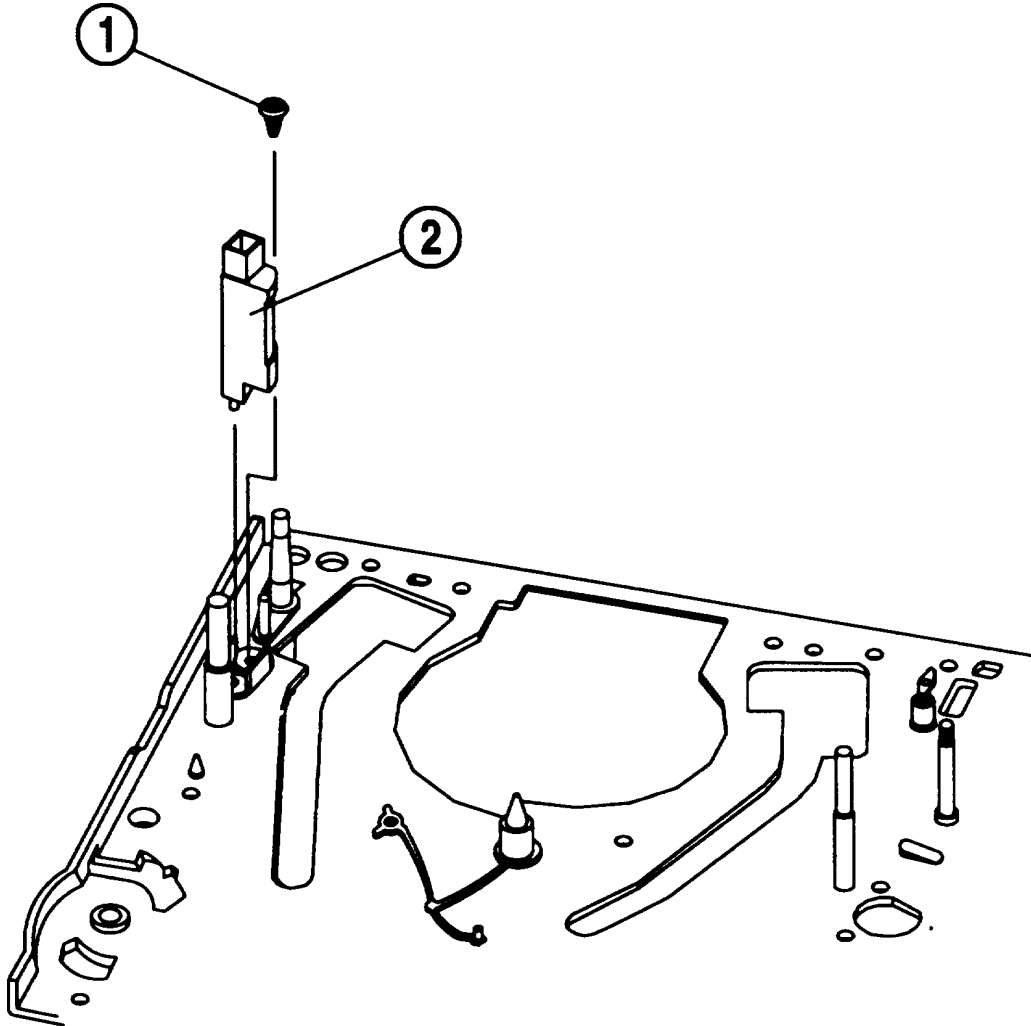


Fig. 29 FE Head Removal





**Reel Gear Total Ass'y and Connect Plate Removal
(Fig. 30)**

1. Turn the deck mechanism upside down and remove one (1) polywasher (1).
2. Release the tab "B" of the main base and part the reel gear total ass'y (2) from the main base.
3. Push the connect plate (3) to the left direction and separate it from the main base.

Note:

- When removing the connect plate with the F/L rack installed, take care not to damage/bend the connect plate.
- When assembling or disassembling, take care not to get oil or grease on the reel belt.

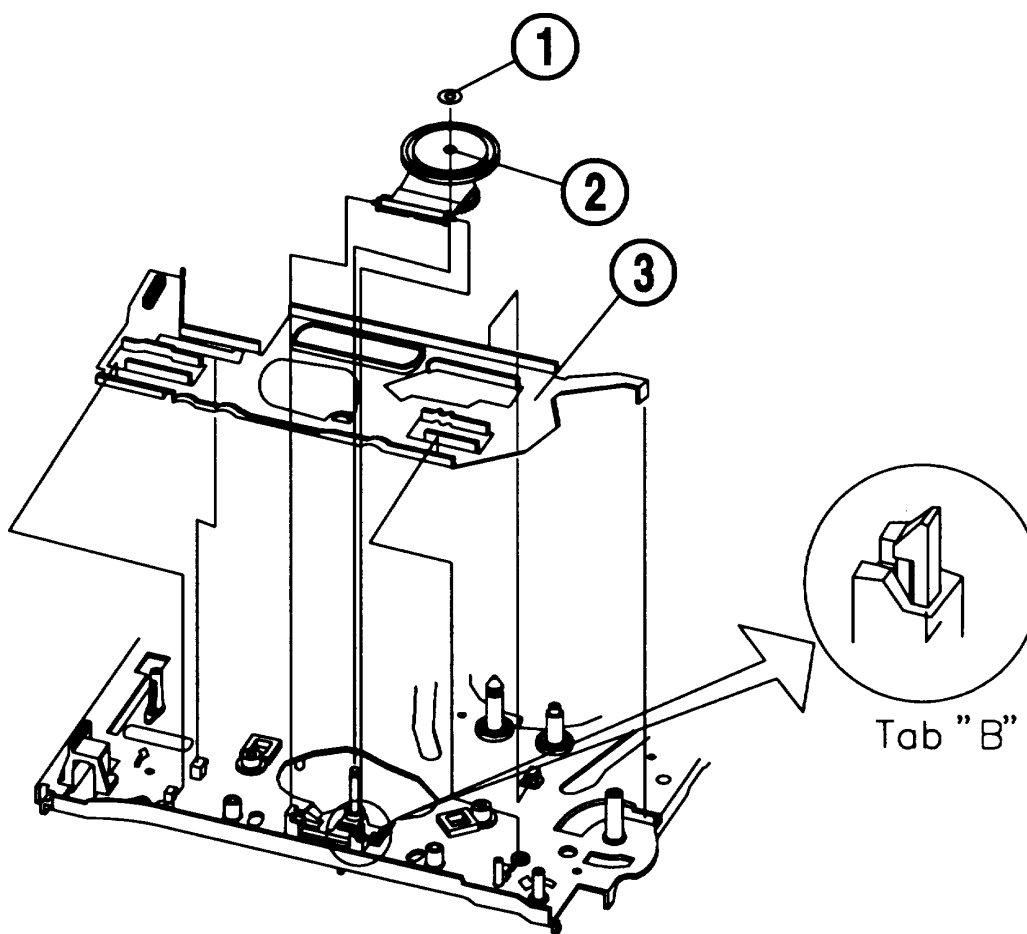


Fig. 30 Reel Gear Total Ass'y and Connect Plate Removal

