

TROUBLESHOOTING SUBINDEX

Power Circuit

No Output Voltage

Servo/Syscon/Logic Circuit

Digitron Does Not Operate

LED or Digitron Is Lit But Key Does Not Operate

1 Minute Back Up Timer Does Not Operate

Channel Broadcast Signal Is Not Received

LED Is Inoperative

Playback Picture Is Not Good (Noise After Tracking Adjustment)

Playback Picture Is Not Good (Noise Over Entire Screen)

VCR Goes Into Auto Stop During Playback

Drum Motor Does Not Rotate

Capstan Motor Does Not Rotate

VCR Goes Into The Emergency Mode

Cassette Loading Inoperative

Video Circuit (2- and 4-Head Model)

EE Mode Picture NG

PB Video Signal Missing (2-Head Model)

Record Video Signal NG (2-Head Model)

PB Video Signal Missing (4-Head Model)

Record Video Signal NG (4-Head Model)

OSD Character Incorrect

Audio Circuit (2- and 4-Head Model)

No Sound In The EE Mode

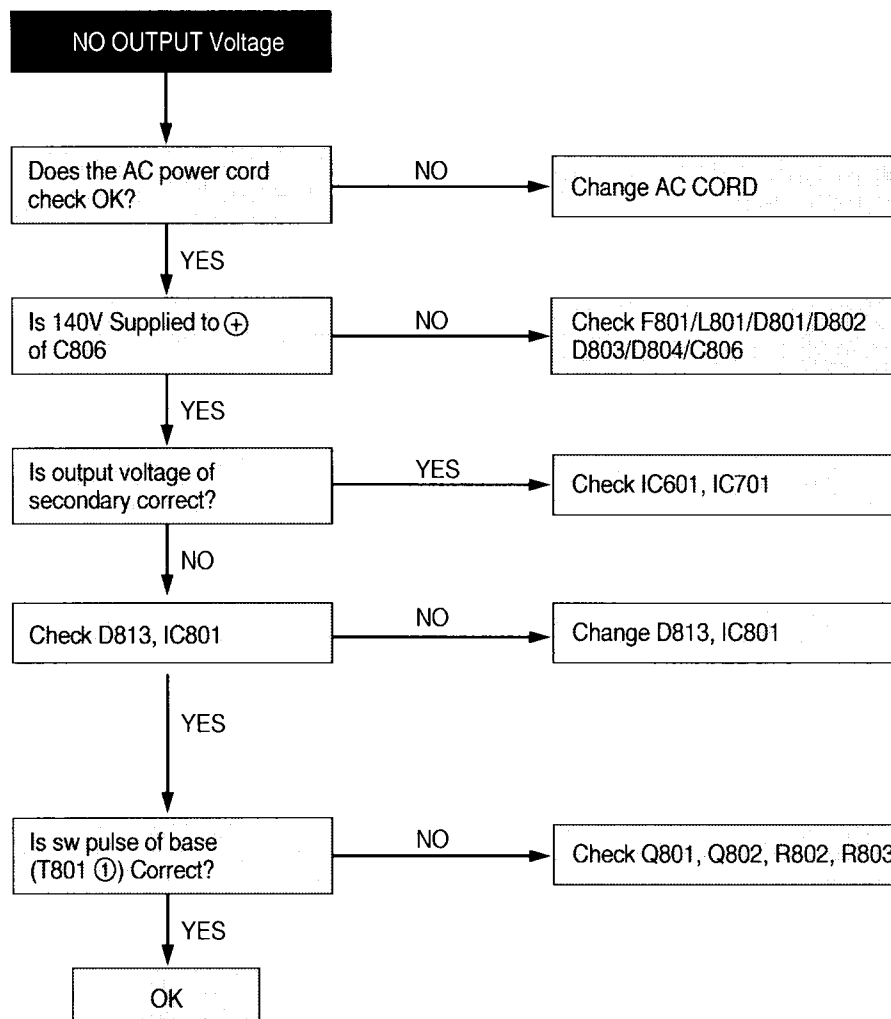
No Sound In Playback Mode

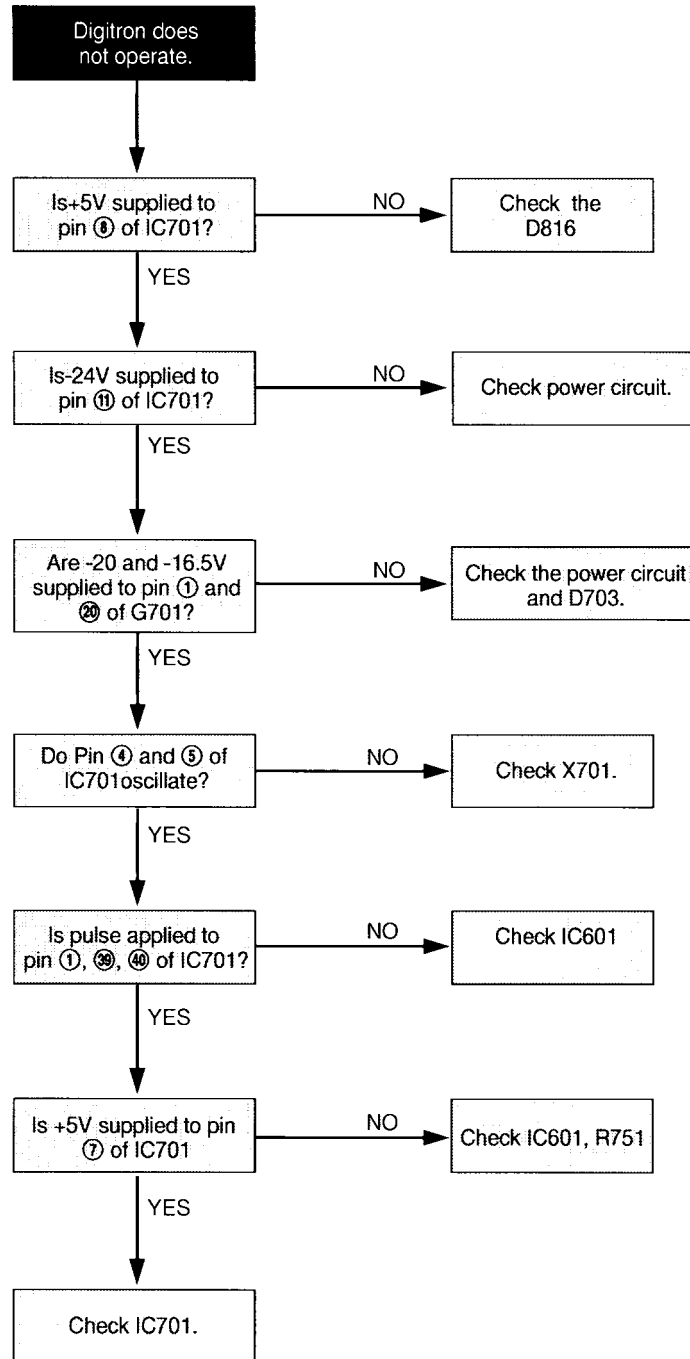
No Sound In The Playback Mode After Recording

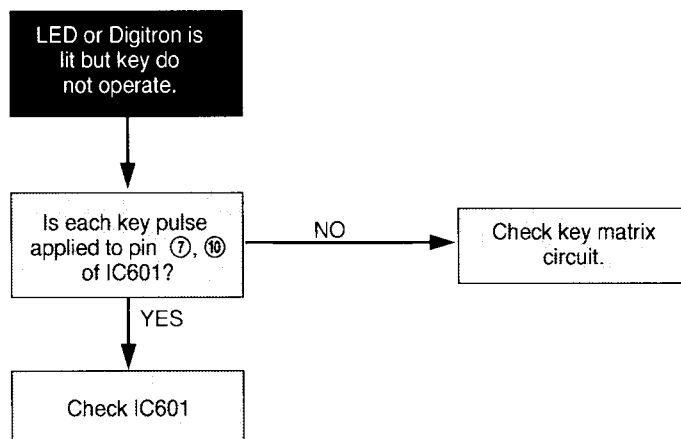
Commercial Advance Circuit

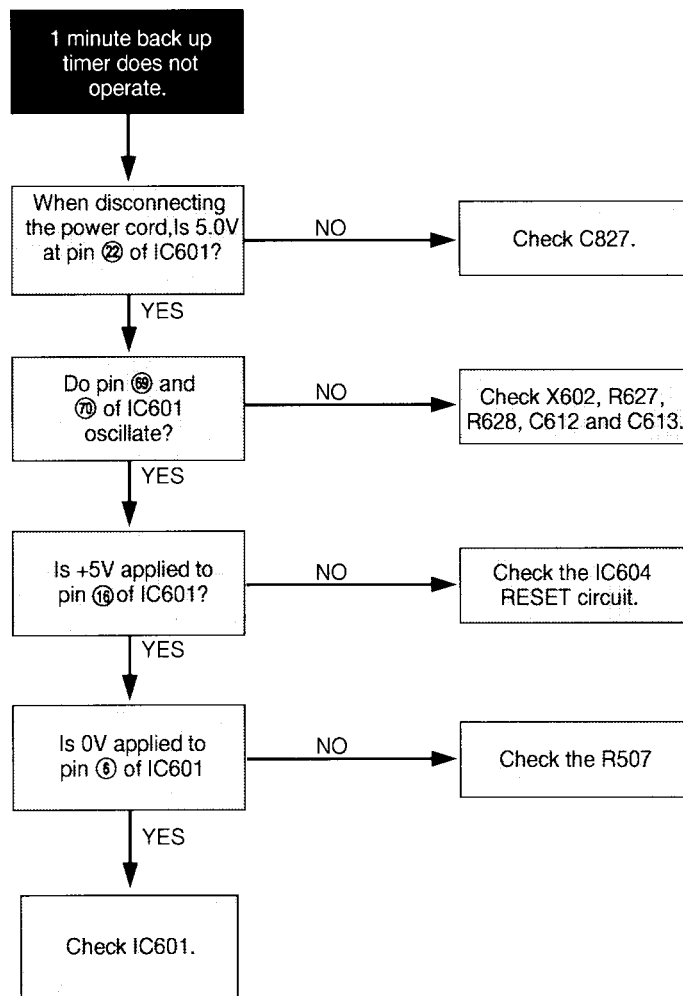
Commercial Advance Does Not Operate

Movie Advance Does Not Operate



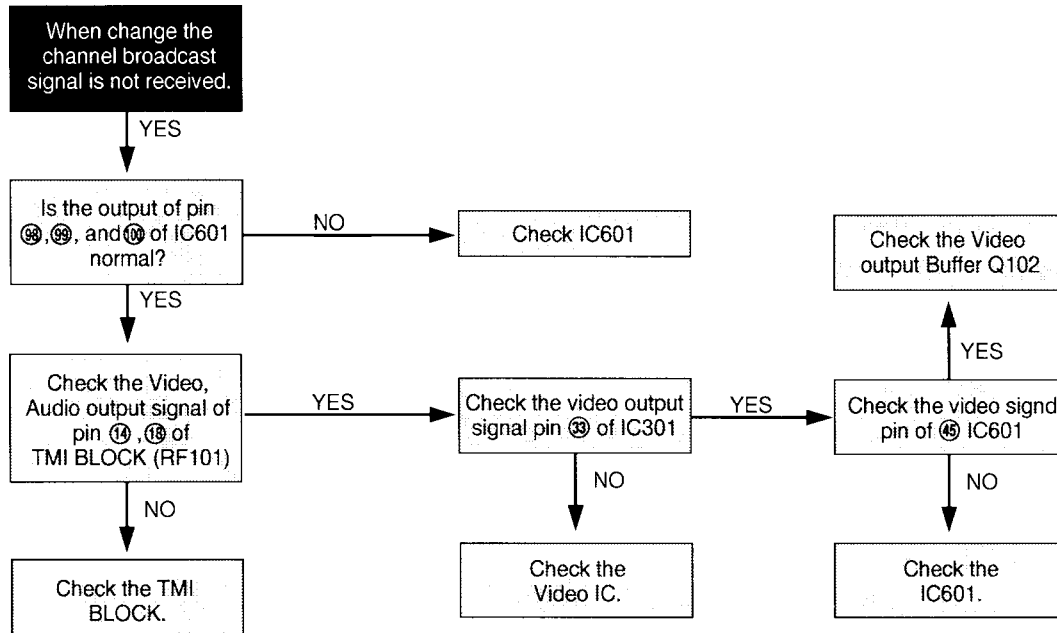


**LED or Digitron Is Lit But Key Does Not Operate**

**1 Minute Back Up Timer Does Not Operate**

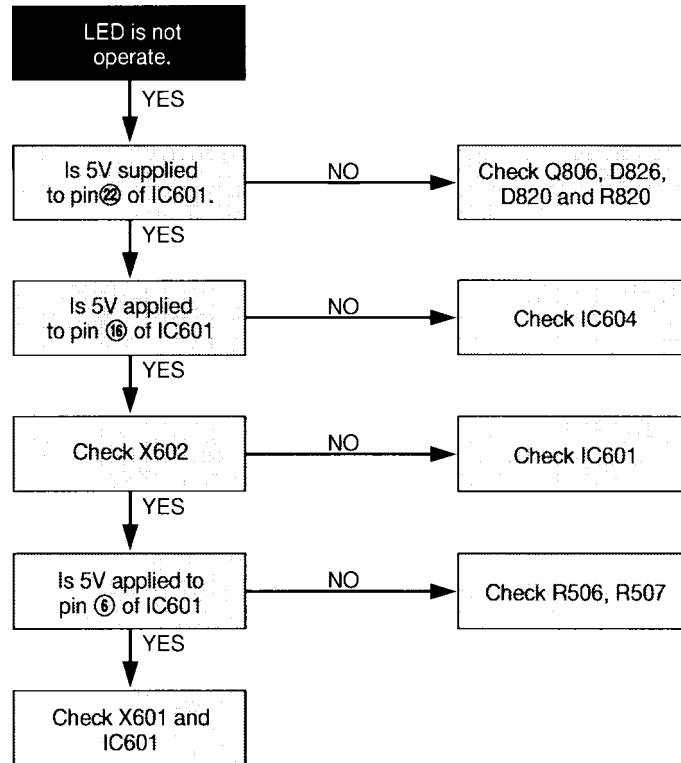


Channel Broadcast Signal Is Not Received



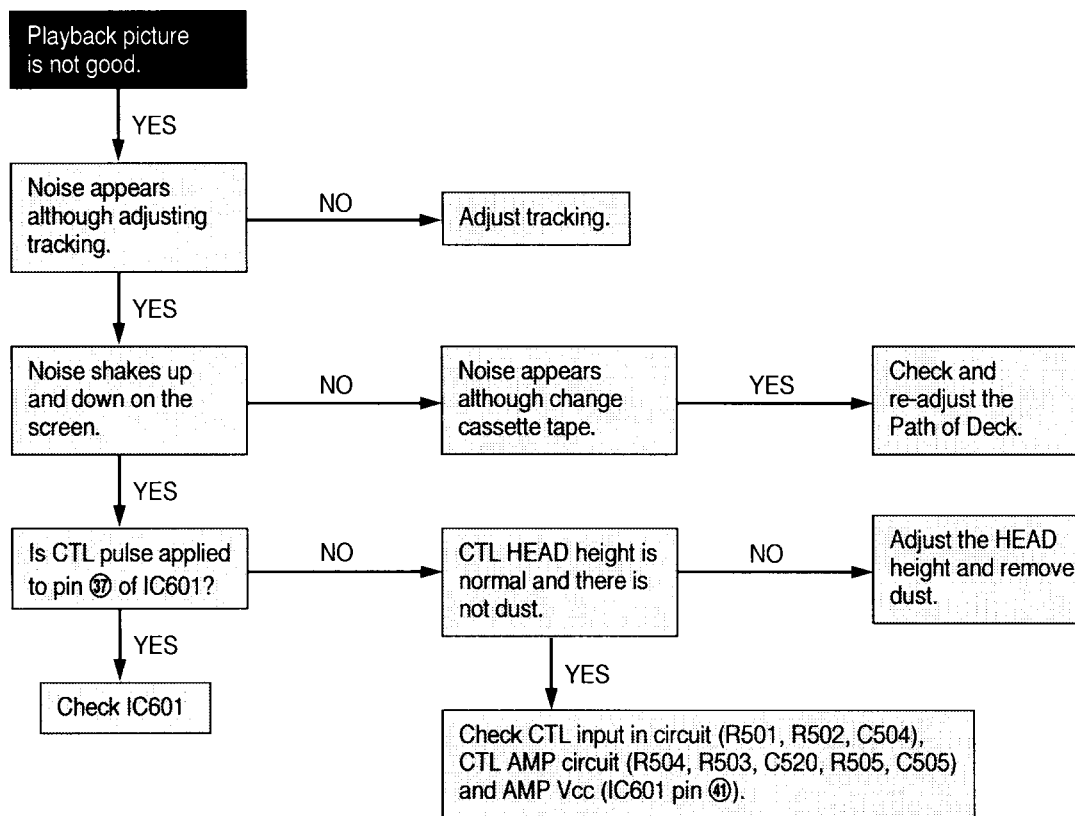


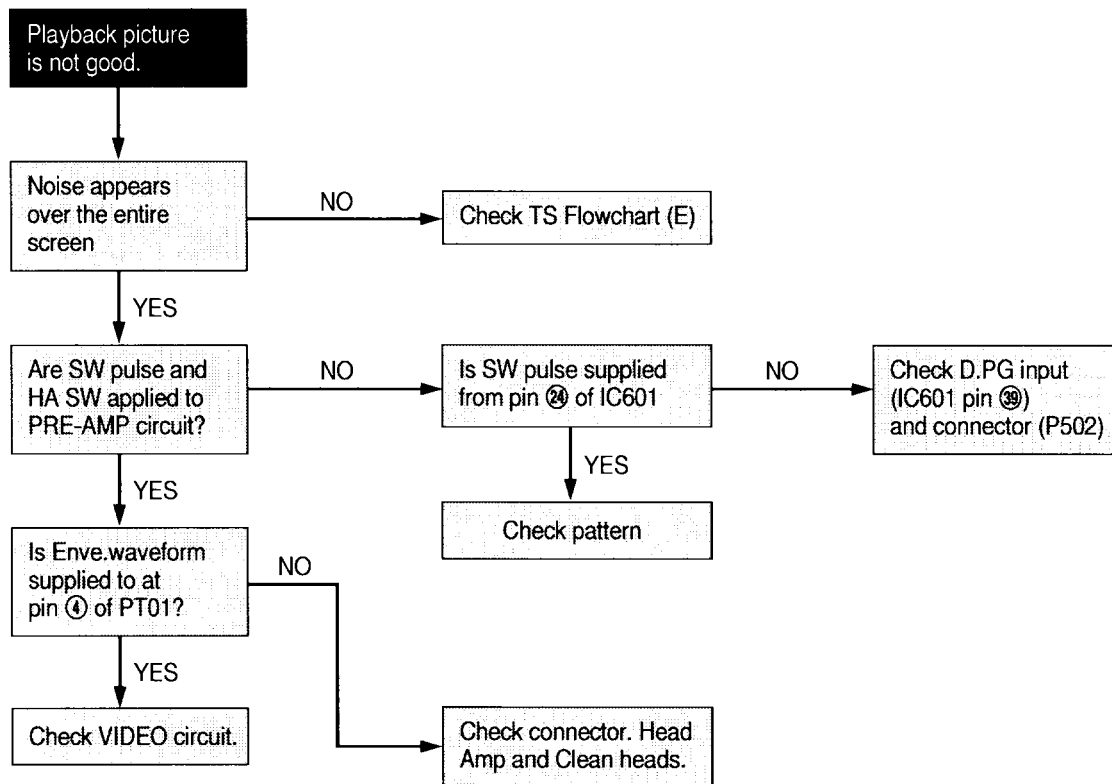
LED Is Inoperative





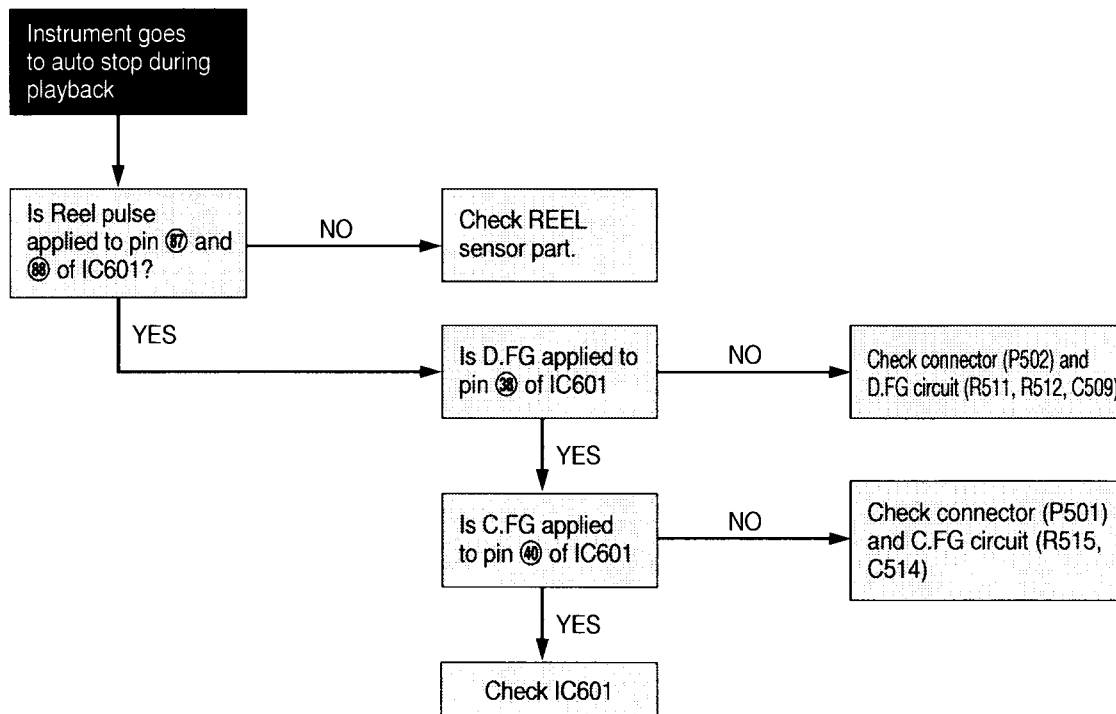
Playback Picture Is Not Good (Noise After Tracking Adjustment)

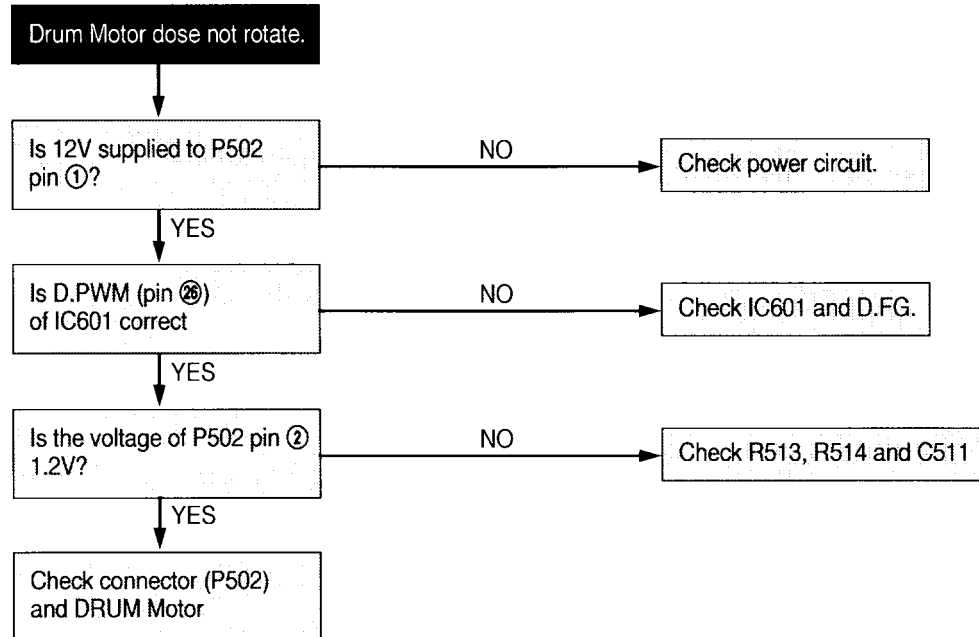


**Playback Picture Is Not Good (Noise Over Entire Screen)**



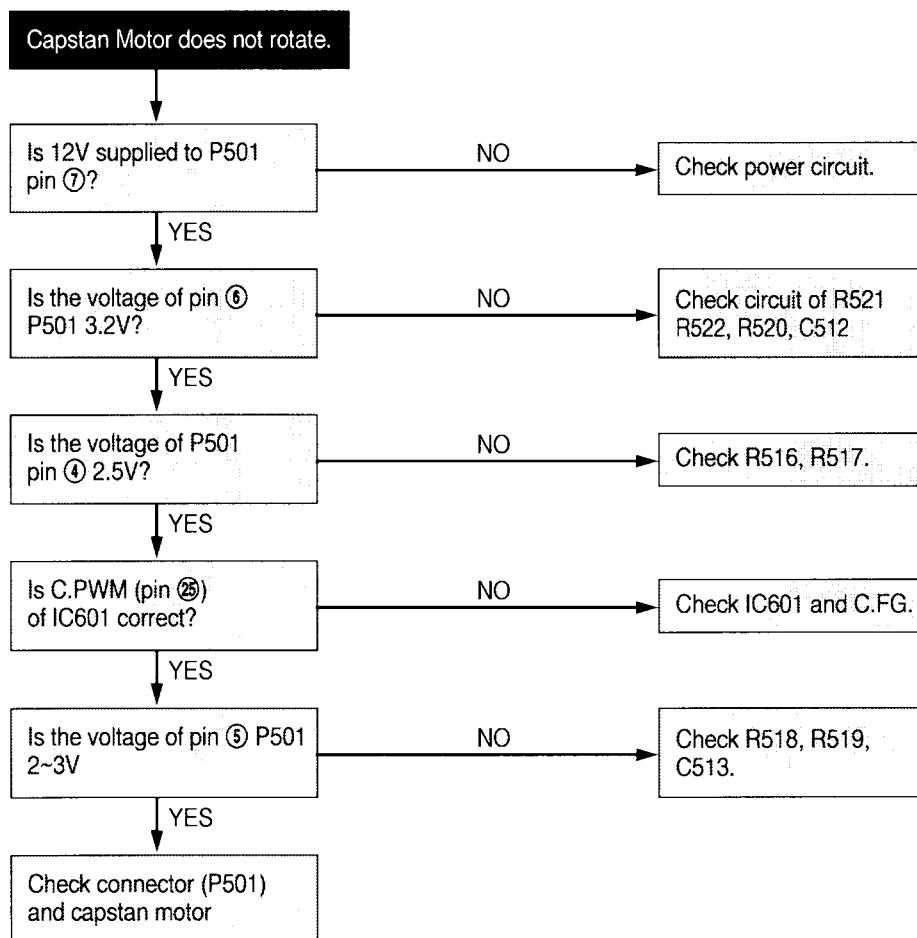
VCR Goes Into Auto Stop During Playback



**Drum Motor Does Not Rotate**

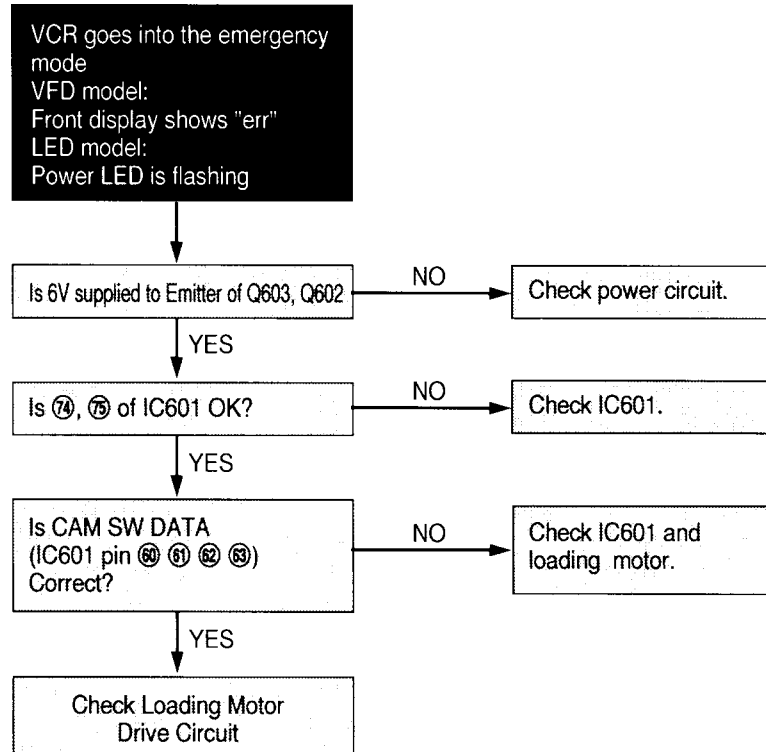


Capstan Motor Does Not Rotate



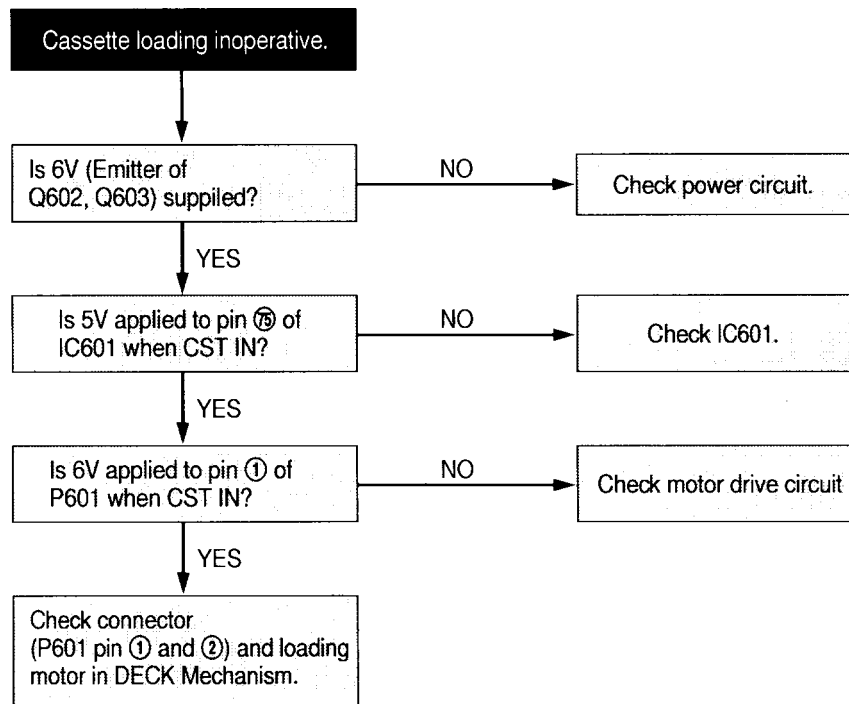


VCR Goes Into The Emergency Mode



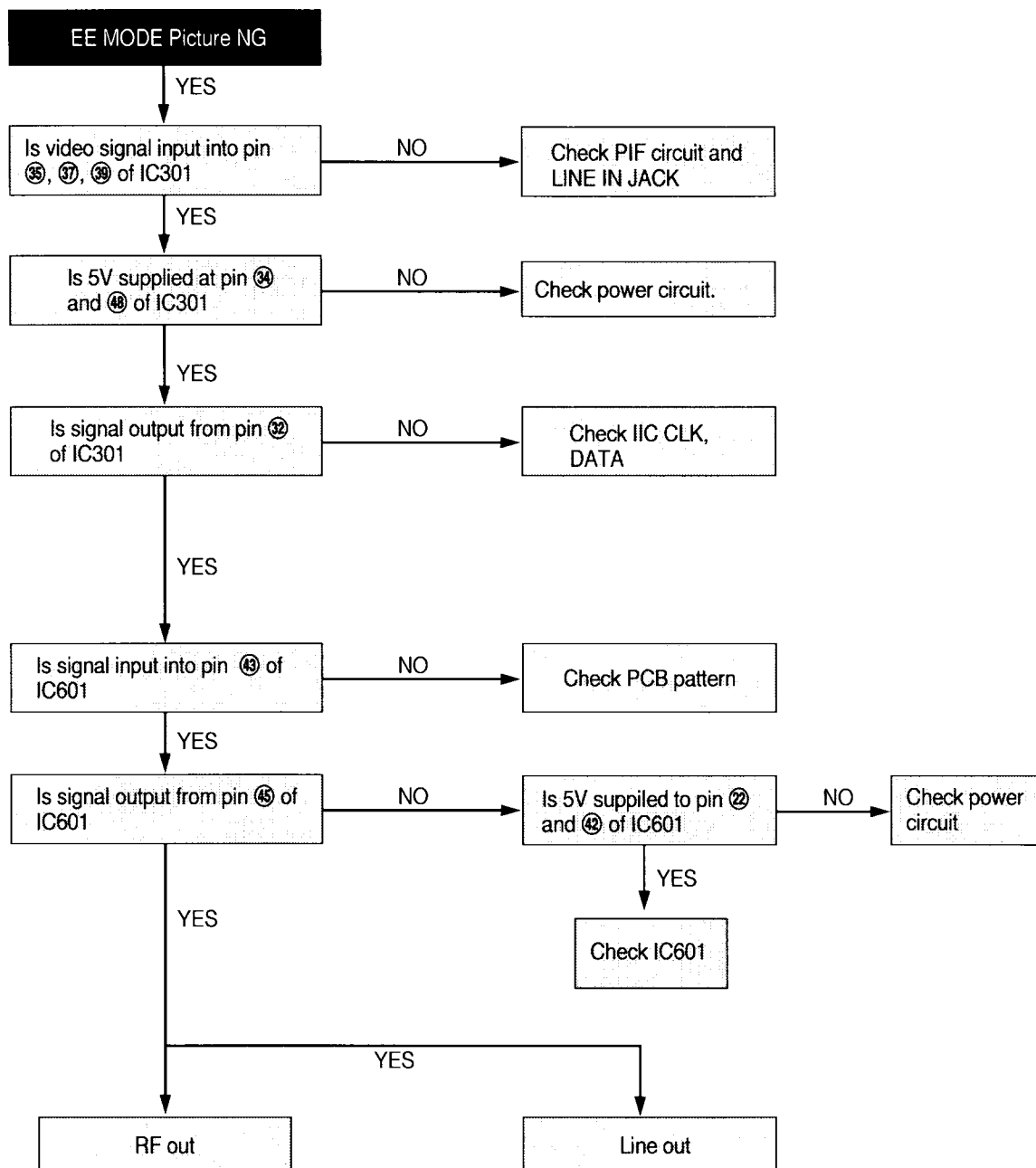


Cassette Loading Inoperative



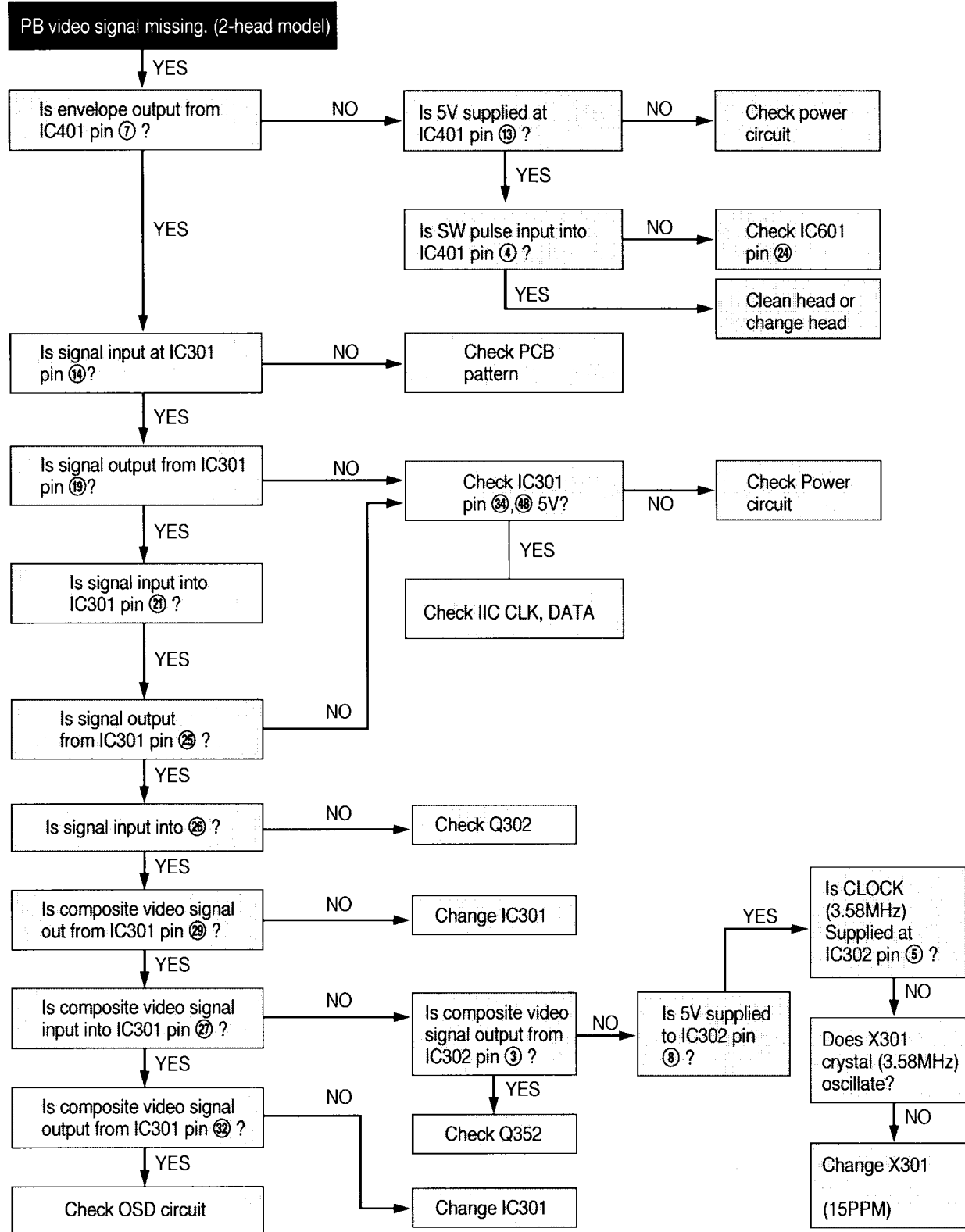


EE Mode Picture NG



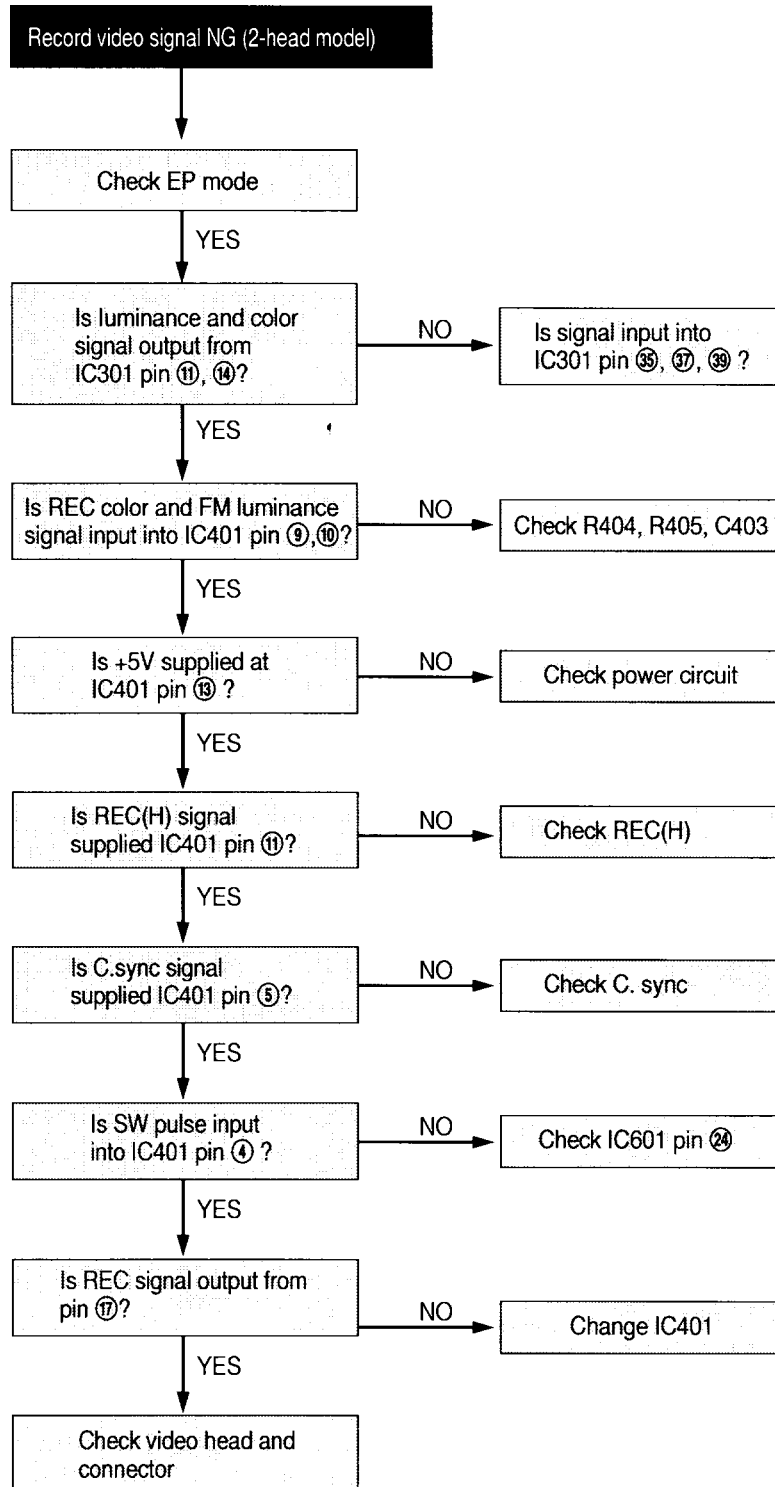


PB Video Signal Missing (2-Head Model)



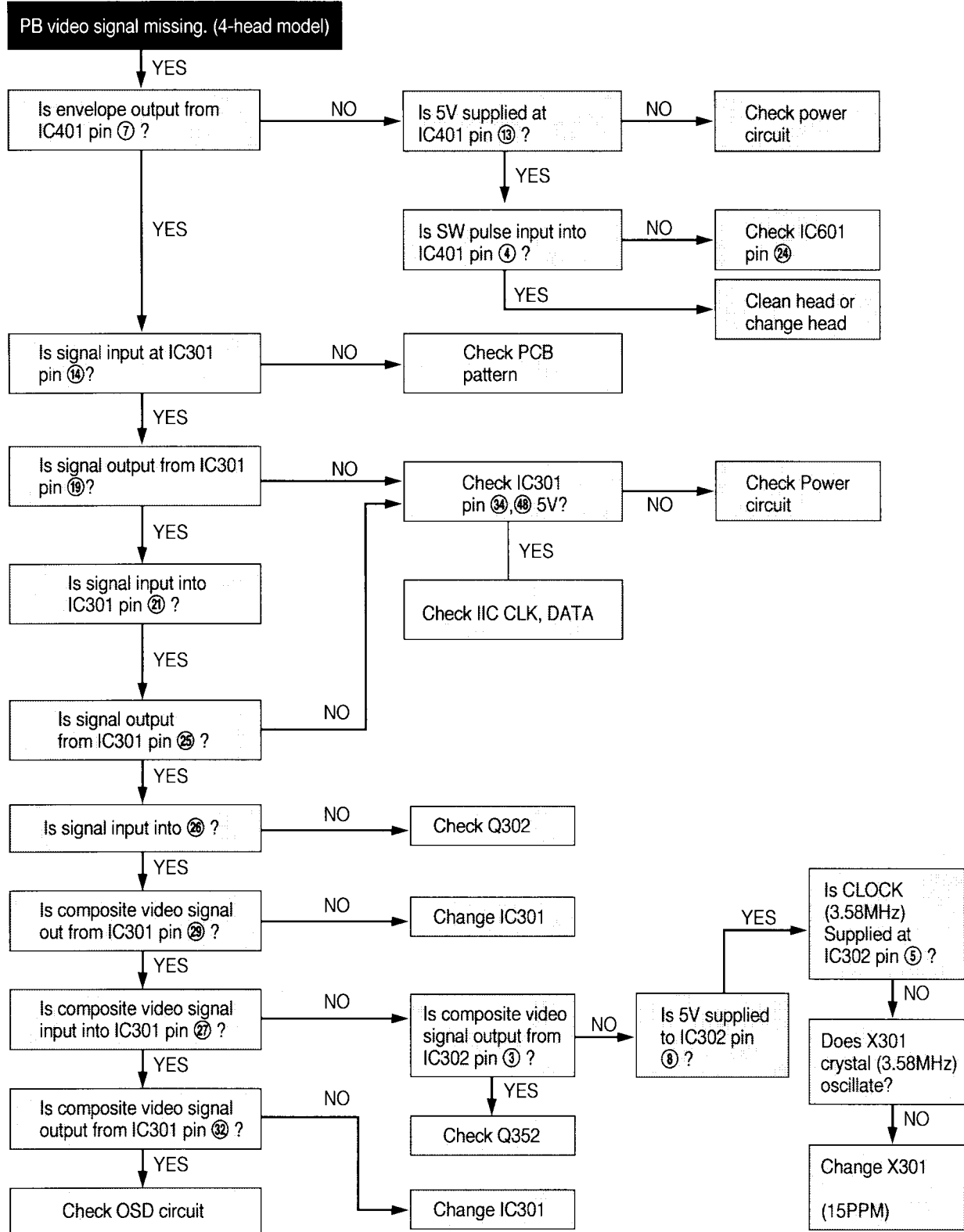


Record Video Signal NG (2-Head Model)



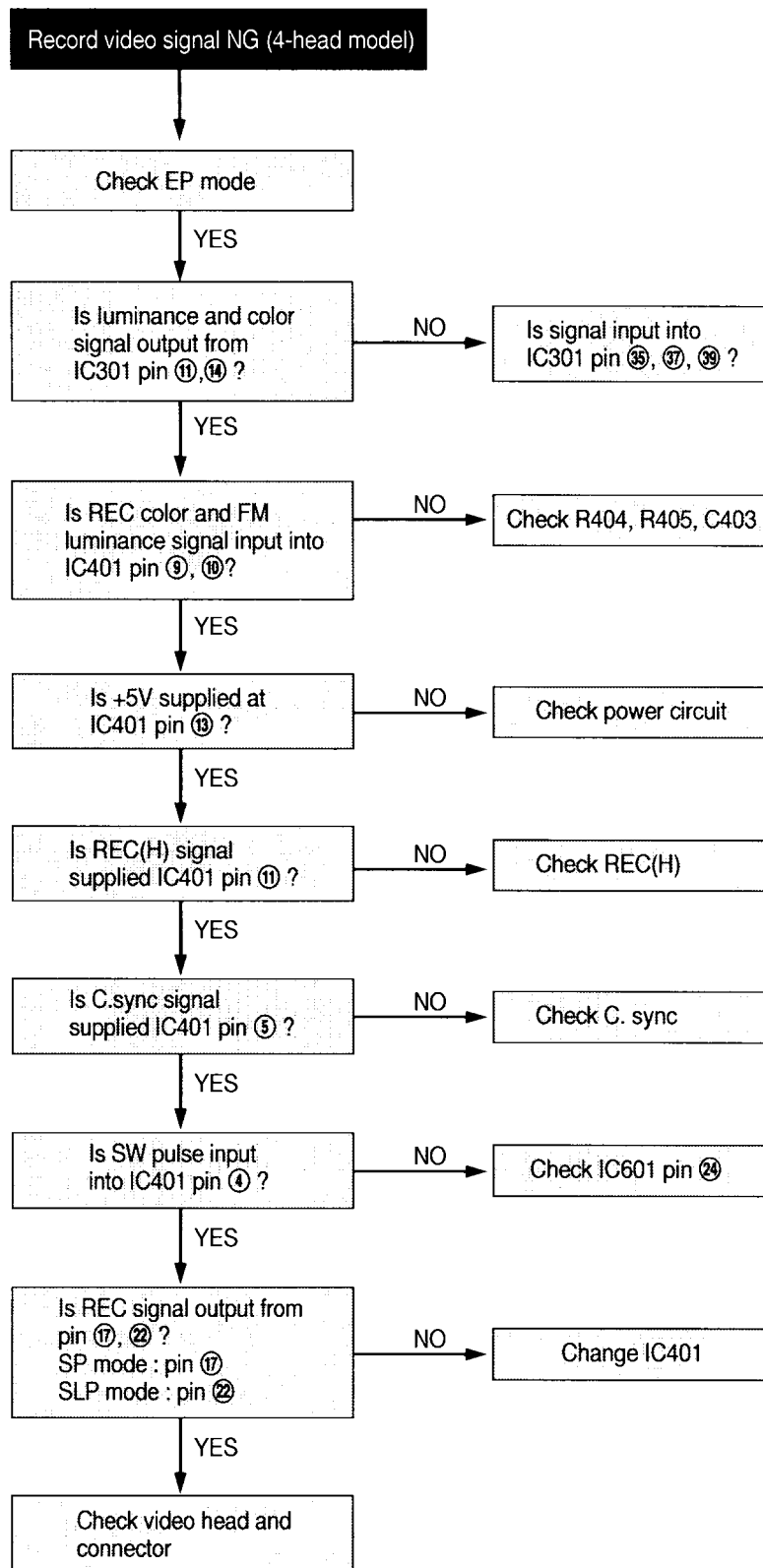


PB Video Signal Missing (4-Head Model)



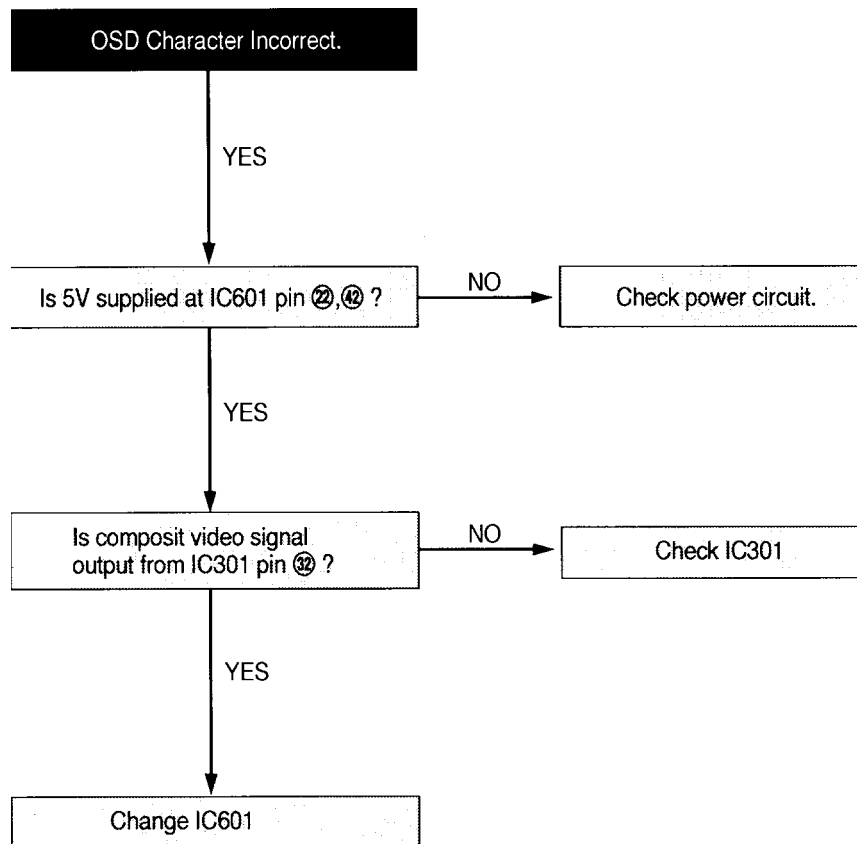


Record Video Signal NG (4-Head Model)



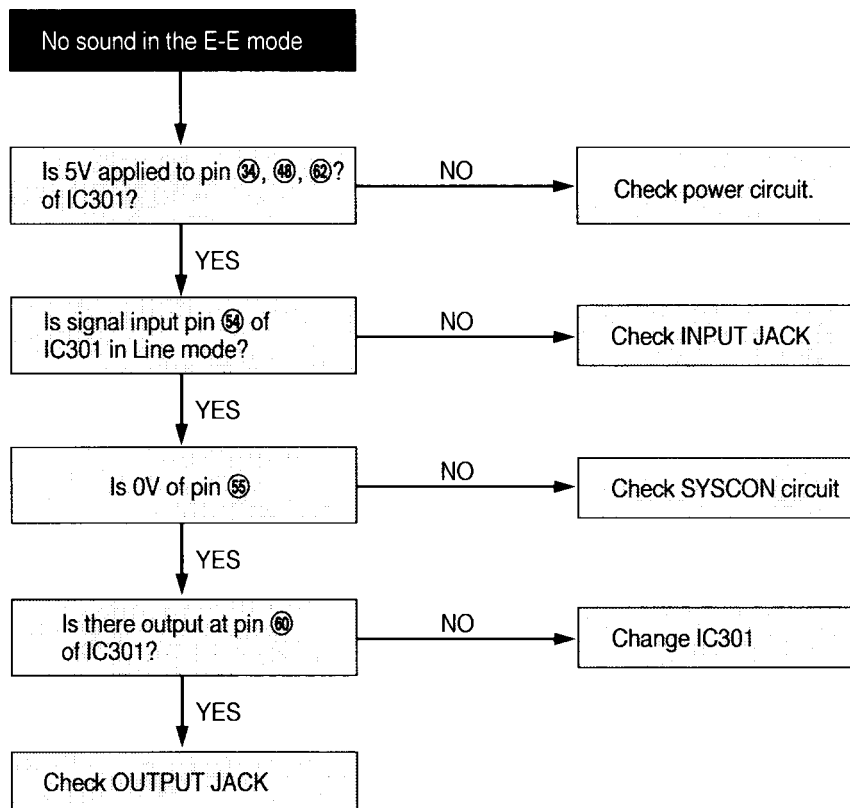


OSD Character Incorrect



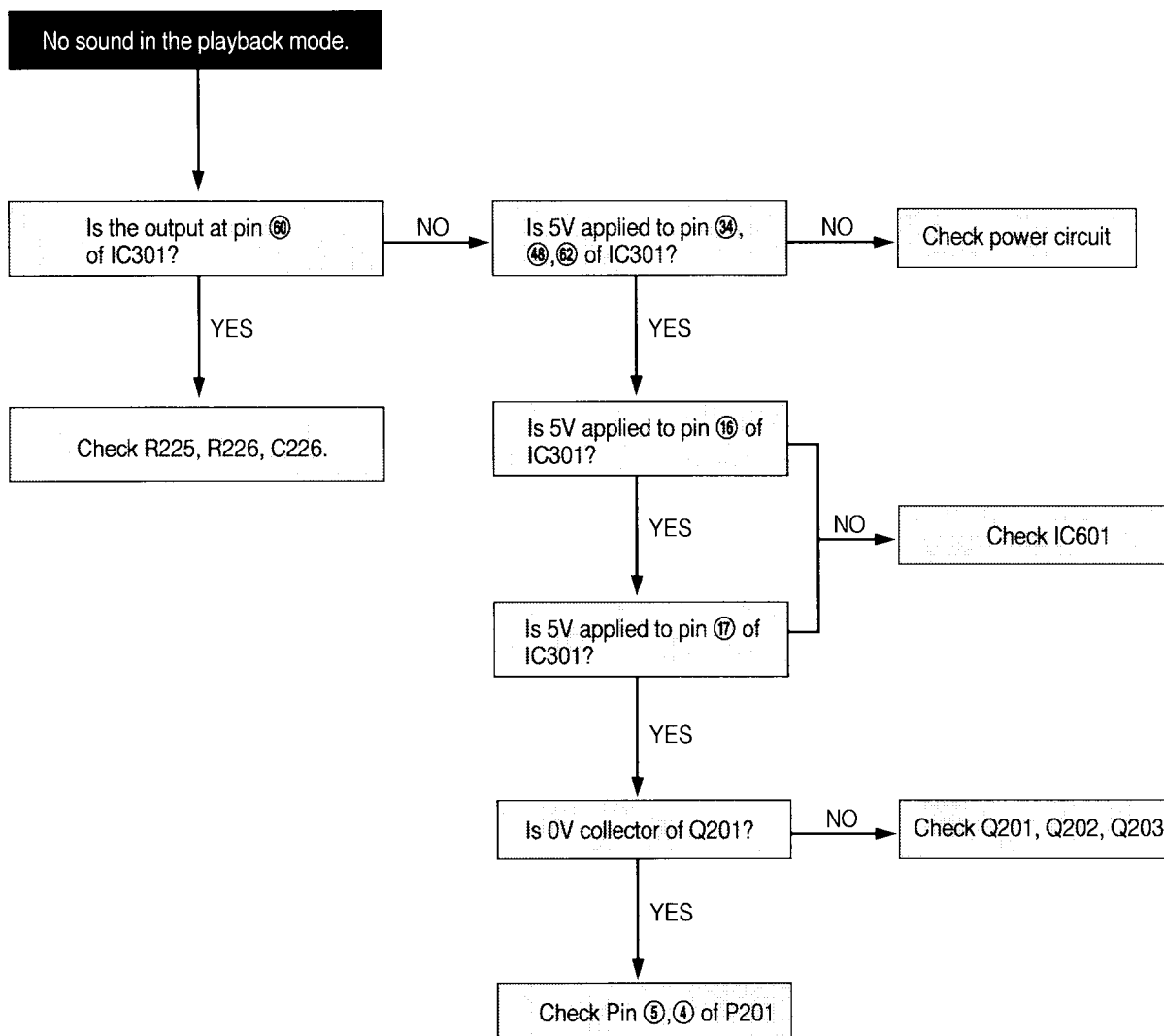


No Sound In The EE Mode





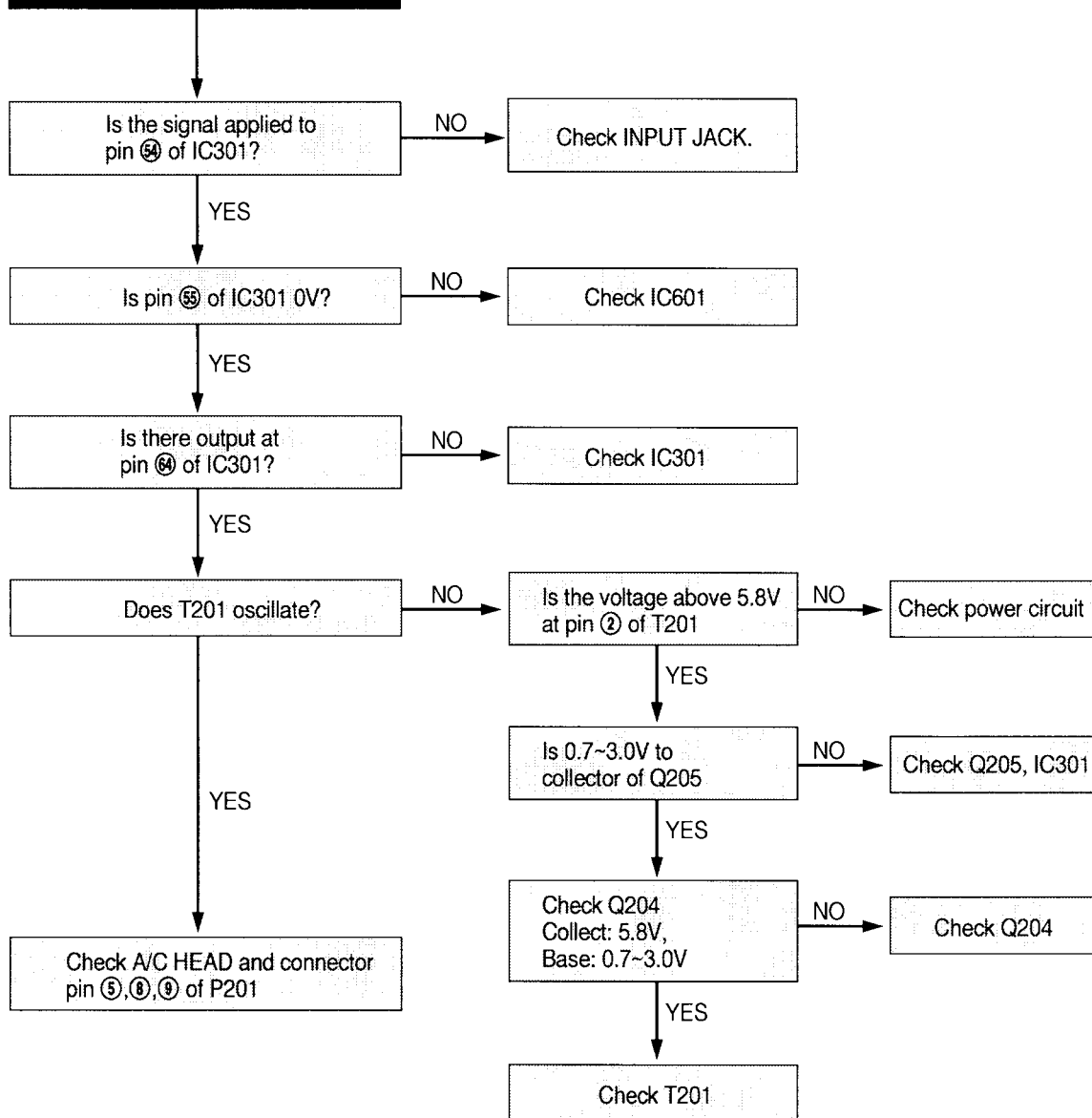
No Sound In Playback Mode





No Sound In The Playback Mode After Recording

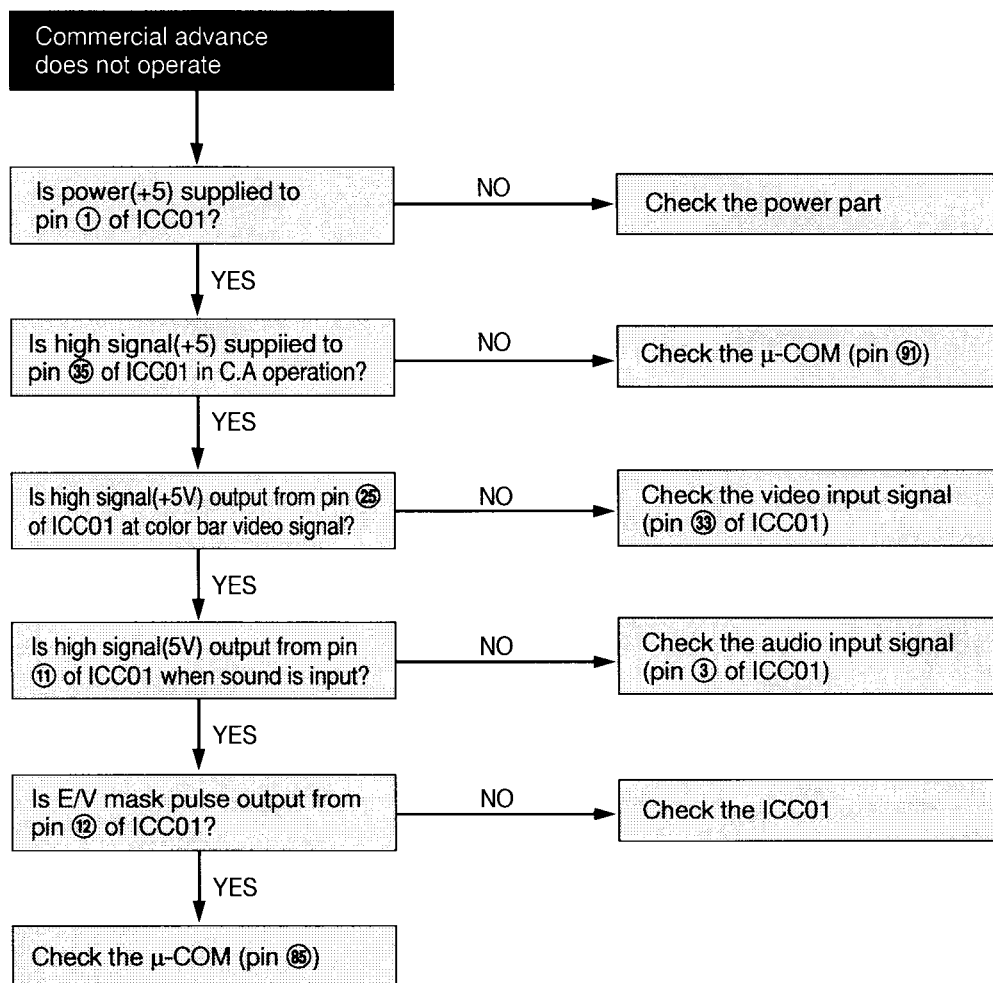
No sound in the playback mode after recording. Check the following procedure in RECORD mode.



TROUBLESHOOTING GUIDES Commercial Advance Circuit



Commercial Advance Does Not Operate





Movie Advance Does Not Operate

