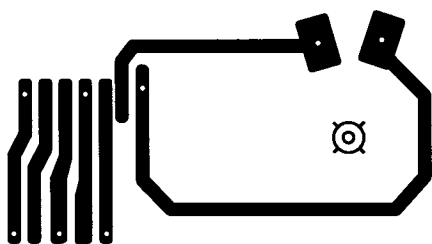
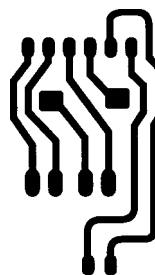


Loading Motor PCB



A/C Head PCB



PCB Connector Information

MAIN PCB

TO
PATH ADJUST

PT01	
1	GND
2	CTL
3	V SW PULSE
4	PB Y
5	PATH ADJUST
6	D EVER 5V

TO
CAPSTAN MOTOR

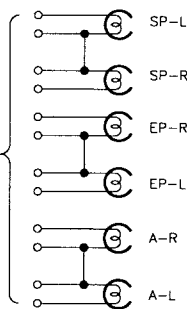
P501	
D EVER 5V	1
C F/R	2
C FG	3
C CTL REF	4
C SPEED CTL	5
C I LIMIT	6
EVER 12V	7
C MTR GND	8
C IC GND	9
NC	10

TO
A/C HEAD
FE HEAD

P201	
CTL HEAD(+)	1
CTL HEAD(-)	2
NC	3
A HEAD(PB)	4
A HEAD(REC)	5
G N D	6
AE HEAD	7
FE HEAD	8
FE HEAD	9

TO
HEAD

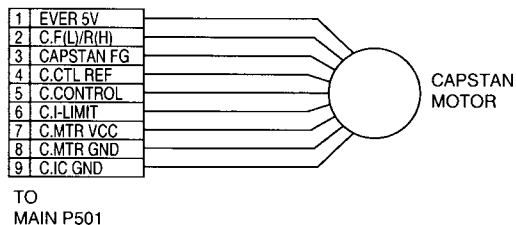
P401	
SP-L	1
SP COMM	2
SP-R	3
G N D	4
EP-R	5
EP COMM	6
EP-L	7
A.FM-R	8
COMMON	9
A.FM-L	10

TO
DRUM MOTOR

P502	
D EVER 12V	1
D SPEED CTL	2
D PG	3
D PG	4
G N D	5
D FG	6

TO
LOADING MOTOR

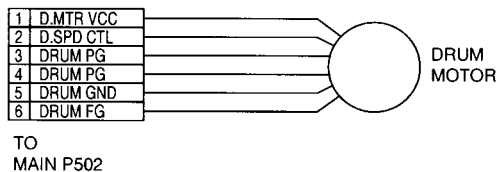
P601	
LM (+)	1
LM (-)	2
G N D	3
CAM D	4
CAM C	5
CAM B	6
CAM A	7



FE HEAD



DRUM MOTOR PCB



A/C HEAD PCB

