

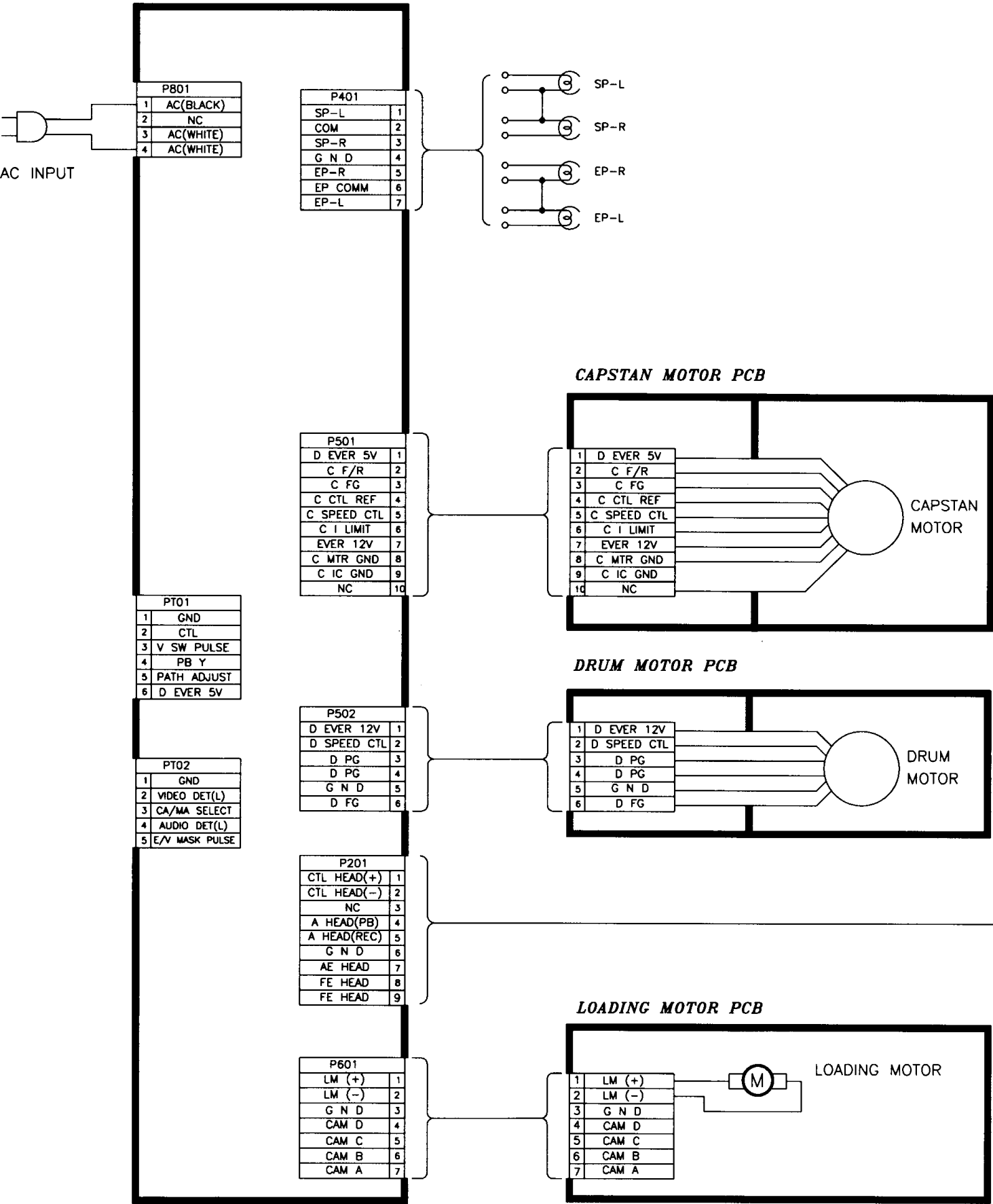
BLOCK DIAGRAMS SUBINDEX

- INTERCONNECT WIRING DIAGRAM
- SERVO & SYSCON & EDS BLOCK DIAGRAM
- LOGIC BLOCK DIAGRAM
- VIDEO & AUDIO BLOCK DIAGRAM
- PREAMP (4 HEAD) BLOCK DIAGRAM
- PIF BLOCK DIAGRAM
- POWER SUPPLY BLOCK DIAGRAM
- COMMERCIAL ADVANCE BLOCK DIAGRAM



PROSACON Z

VR568
INTERCONNECT WIRING DIAGRAM



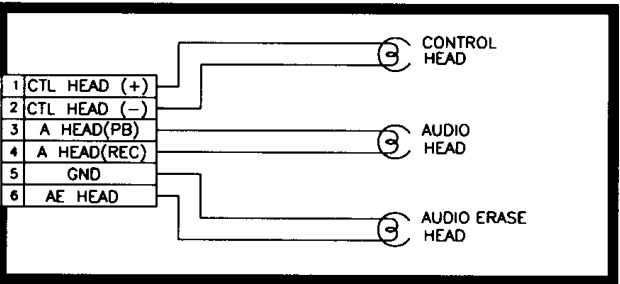
ALL INTEGRATED CIRCUITS AND MANY OTHER SEMI CONDUCTORS ARE ELECTROSTATICALLY SENSITIVE AND REQUIRE SPECIAL HANDLING TECHNIQUES DESCRIBED UNDER "ELECTROSTATICALLY SENSITIVE (ES) DEVICES" IN THE SAFETY AND SERVICING PRECAUTIONS PUBLICATION.

CALLOUTS NEXT TO WIRING PLUGS INDICATE CONNECTIONS TO OTHER SCHEMATICS.

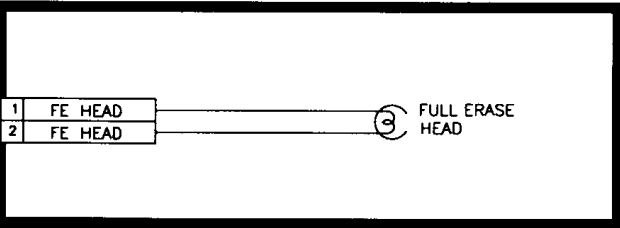
PRODUCT SAFETY NOTE
COMPONENTS WITH A (*) HAVE SPECIAL CHARACTERISTICS IMPORTANT TO SAFETY. BEFORE REPLACING ANY OF THESE COMPONENTS READ CAREFULLY THE PRODUCT SAFETY IN THIS SERVICE DATA. DO NOT DEGRADE THE SAFETY OF THE SET THROUGH IMPROPER SERVICING.

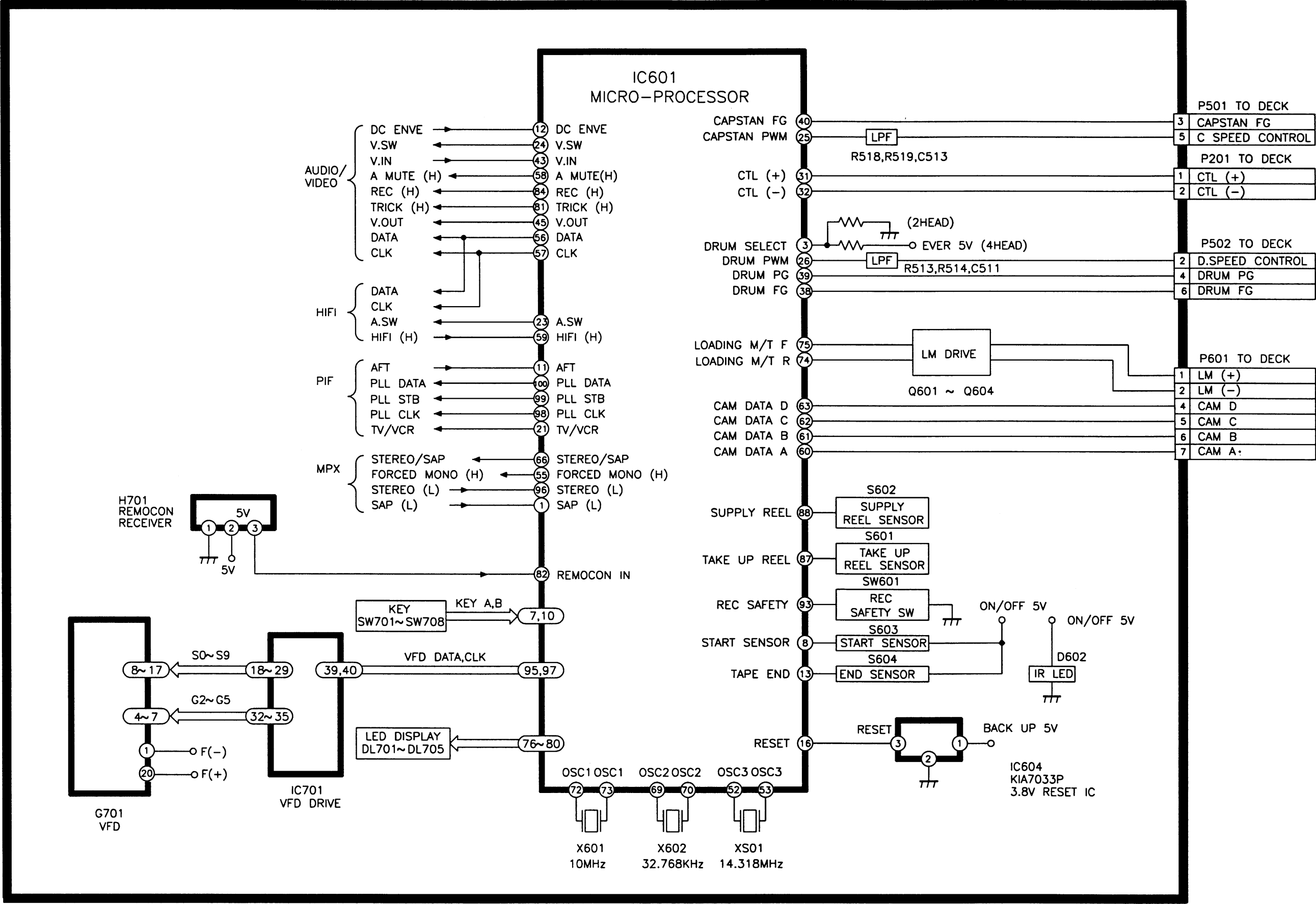
VOLTAGE TAKEN IN SP PLAY MODE () RECORD MODE.

A/C HEAD PCB



FE HEAD

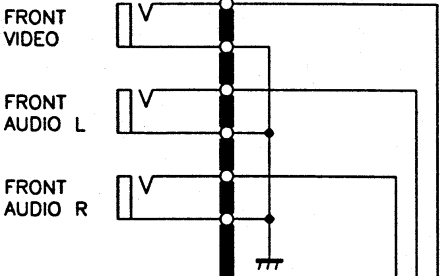




VR568
LOGIC BLOCK DIAGRAM



JK701
FRONT A/V JACK



TO VIDEO & AUDIO
1BC 3BC

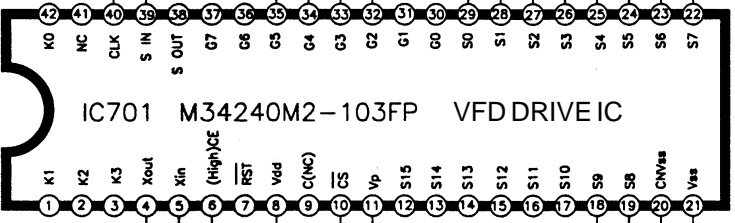
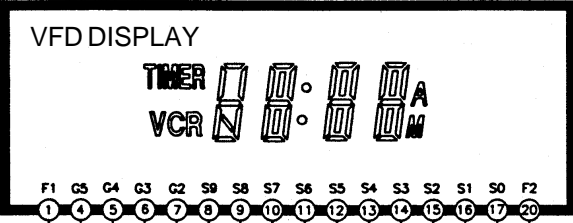
FRONT VIDEO OUT 1BC
FRONT AUDIO L OUT 2BC
FRONT AUDIO R OUT 3BC

TO SERVO & SYSCON
1AB 18AB

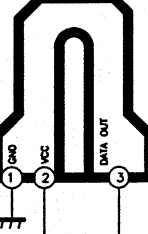
VFD DATA 1AB
VFD CLK 2AB
VFD STB 3AB
RESET(L) 4AB
KEY B 5AB
KEY A 6AB
REMOCON IN 7AB
EVER 5V 8AB
EVER -24V 9AB
F(+) 10AB
F(-) 11AB
EVER 6V 12AB
GND 13AB

REC VIDEO SIGNAL
REC AUDIO SIGNAL

G701 SW-4SS06-

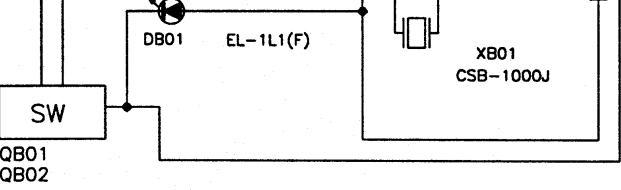
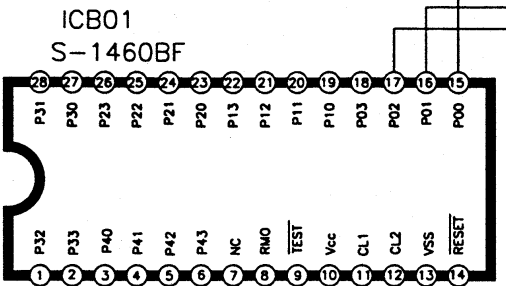


X701
2.5MHz
CST 2.5MGW
RESONATOR

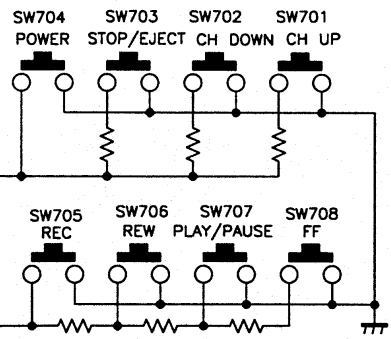


H701
TSOP1256XG1

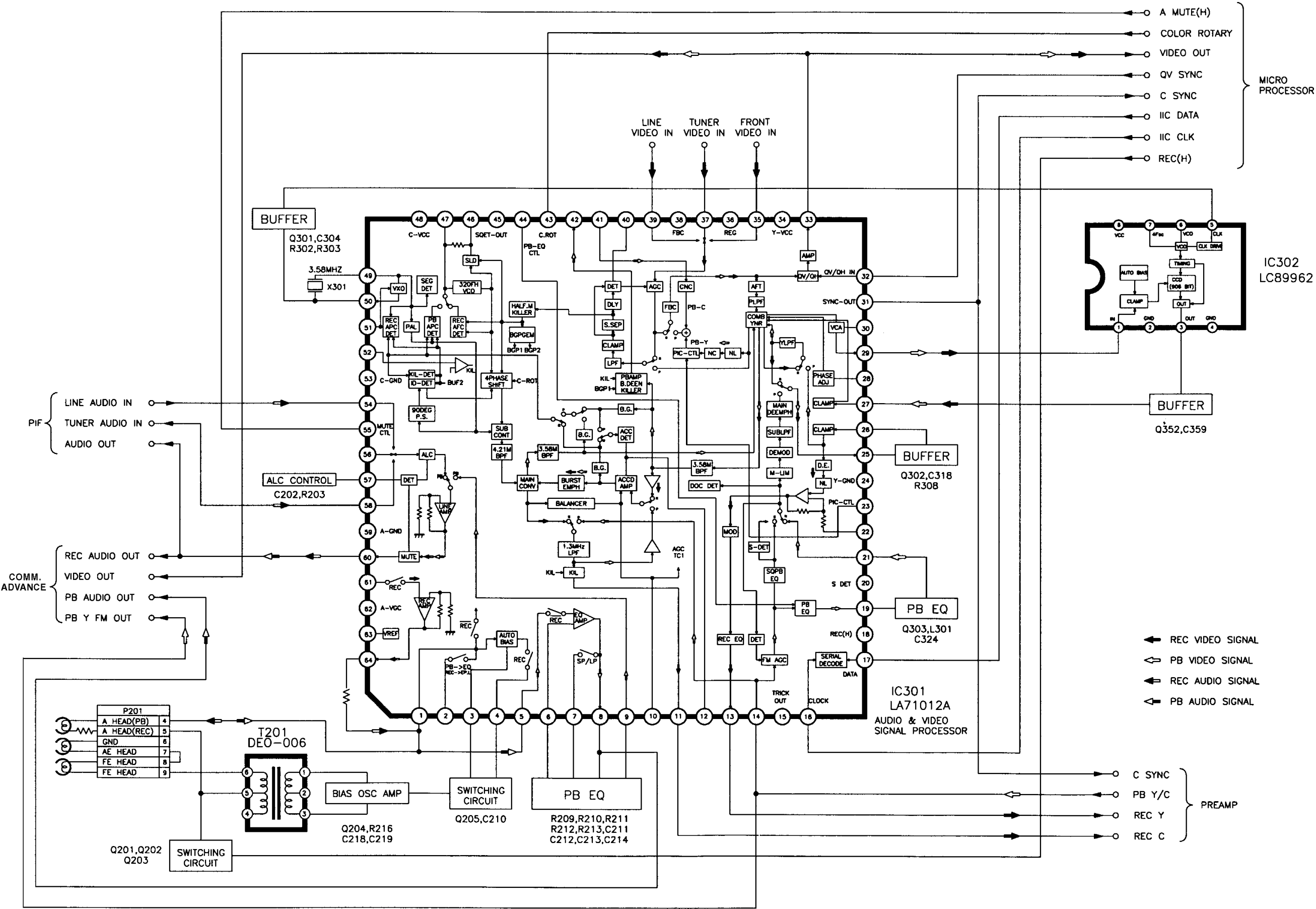
CBC BLOCK DIAGRAM



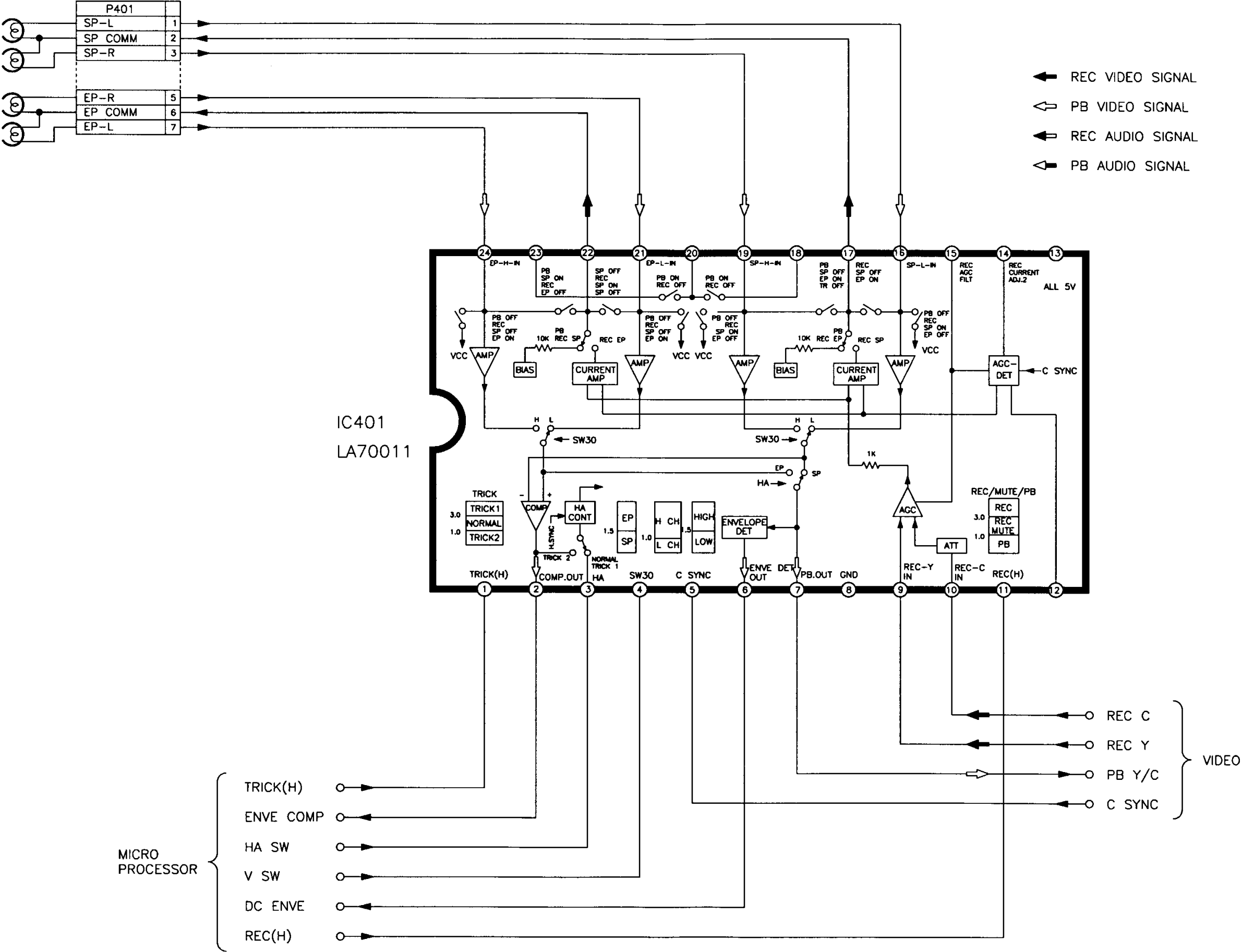
PB01
1 GND
2 CBC DATA
3 CBC CLK
4 CBC STB
5 CBC PULSE
6 EVER 5V



VR568
VIDEO & AUDIO BLOCK DIAGRAM

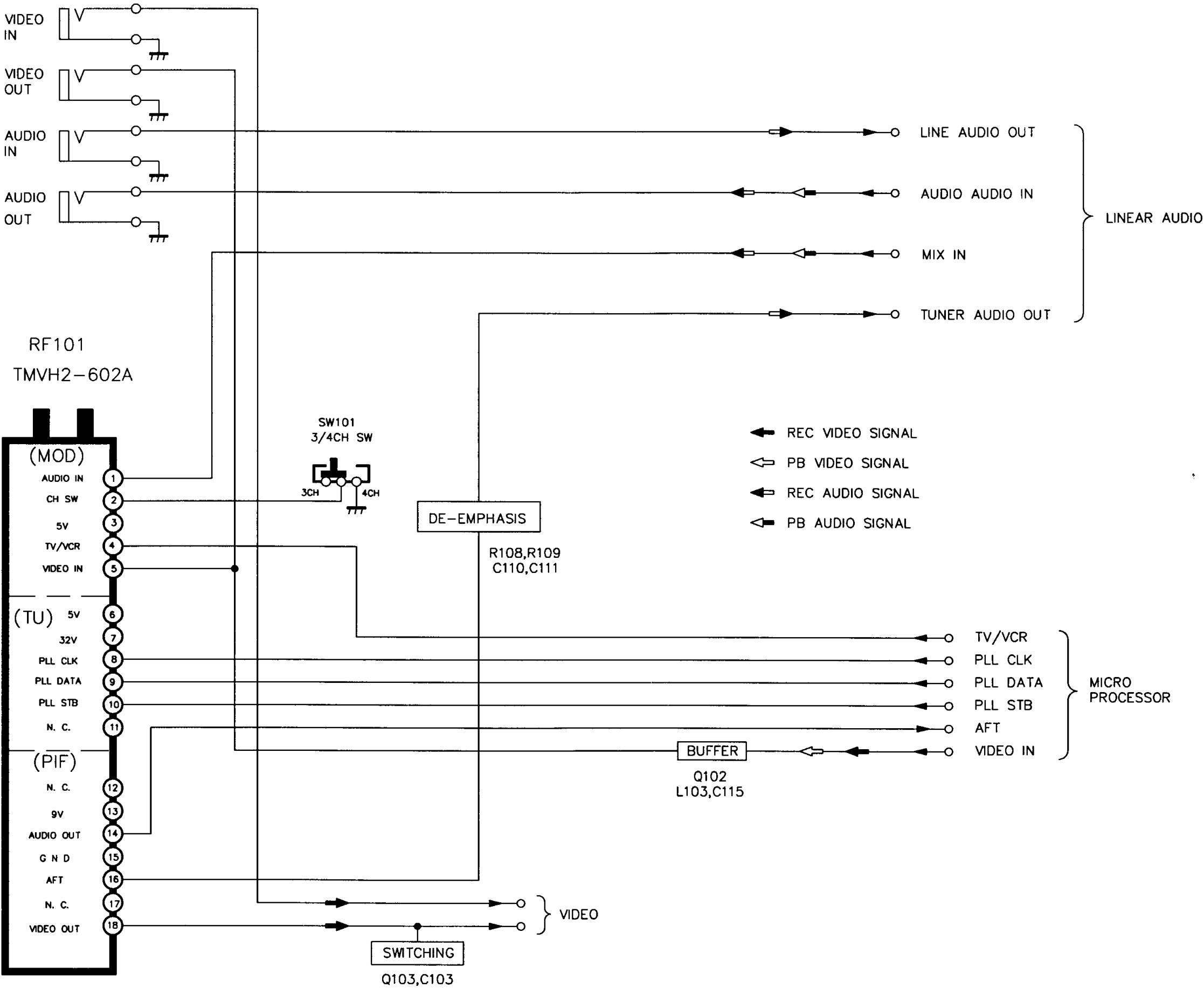


PREAMP (4 HEAD) BLOCK DIAGRAM



VR568
PIF BLOCK DIAGRAM

JK101
A/V JACK



VR568
POWER SUPPLY BLOCK DIAGRAM

