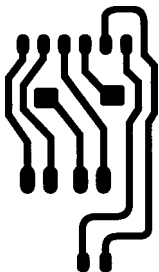
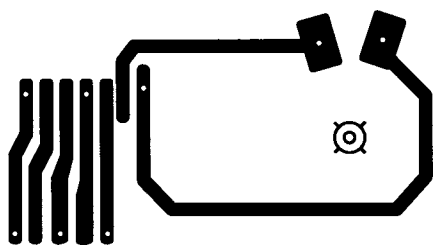


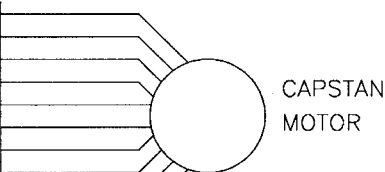
Loading Motor PCB

A/C Head PCB



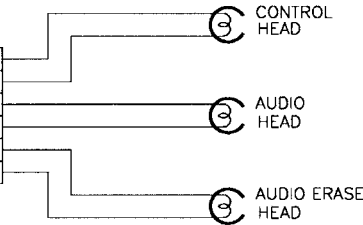
TO MAIN  
P501

1	D EVER 5V
2	C F/R
3	C FG
4	C CTL REF
5	C SPEED CTL
6	C I LIMIT
7	EVER 12V
8	C MTR GND
9	C IC GND
10	NC



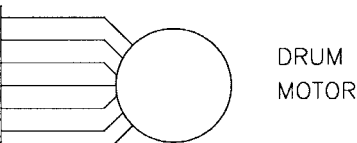
TO MAIN  
PJ201

1	CTL HEAD (+)
2	CTL HEAD (-)
3	A HEAD(PB)
4	A HEAD(REC)
5	GND
6	AE HEAD



TO MAIN  
P502

1	G N D
2	D SPEED CTL
3	D EVER 12V
4	D FG
5	D PG
6	G N D
7	ON/OFF 5V



TO MAIN  
PJ201

1	FE HEAD
2	FE HEAD

