

TROUBLESHOOTING SUBINDEX

POWER CIRCUIT

No Output Voltage

SERVO/SYSCON/LOGIC CIRCUIT

LED Array Does Not Operate

LED Array Is Lit But Key Does Not Operate

1Minute Back-up Timer Does Not Operate

When Changing The Channel, The Broadcast Signal Is Not Received

Playback Picture Is Not Good

Playback Picture Is Not Good

VCR Goes To Auto Stop During Playback

Drum Motor Does Not Rotate

Capstan Motor Does Not Rotate

LED Array shows "Err"

Cassette Loading Inoperative

Video Circuit

EE Mode Picture NG

PB Video Signal Missing

Record Video Signal NG

OSD Character Incorrect

Audio Circuit

No Sound In The EE Mode

No Hi-Fi Sound In Playback Mode of Hi-Fi Recorded Tape

No Hi-Fi Sound In Playback Mode After Hi-Fi Recording.

No Sound In The Linear Playback Mode

No Linear Sound In The Playback Mode After Linear Recording.

Audio Circuit (2/4 Head)

No Sound In The E-E Mode

No Sound In The Playback Mode

No Sound In The Playback Mode After Recording.

Extended Data Service Circuit

ACS (Auto Clock Set) and Station ID Display Does Not Operate

CBC Circuit

CBC Does Not Operate

Commercial Advance Circuit

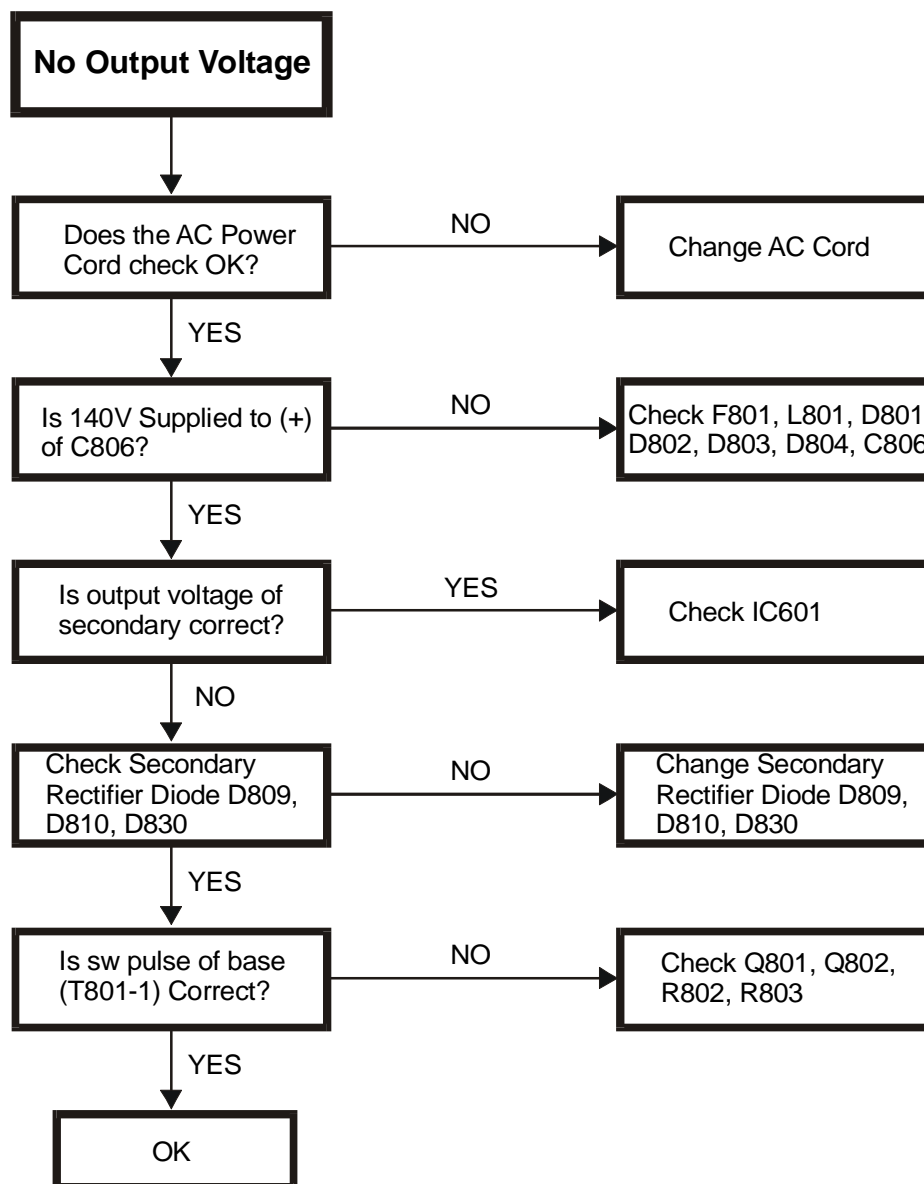
Commercial Advance Does Not Operate

Movie Advance Does Not Operate



POWER CIRCUIT

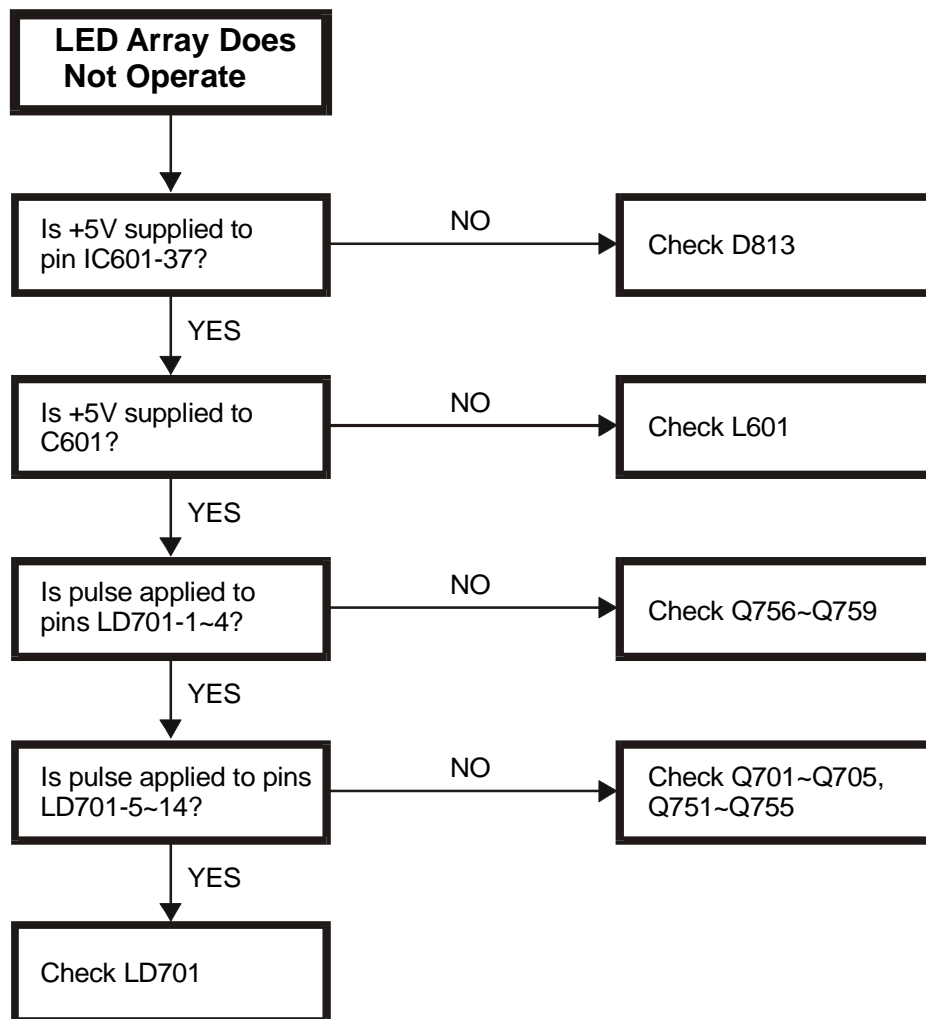
No Output Voltage



Caution: When checking the primary circuit, be sure to use an isolation transformer.



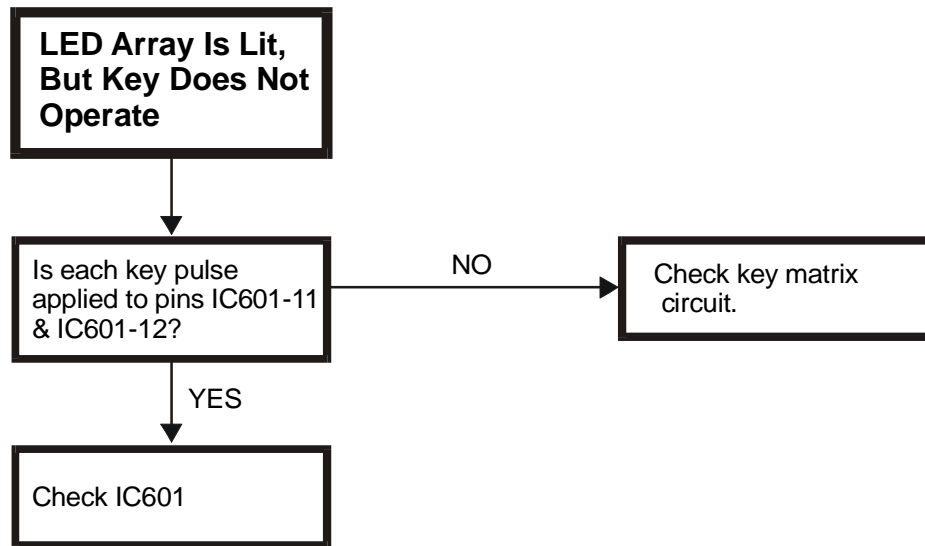
VR352
TROUBLESHOOTING GUIDES
SERVO/SYSCON/LOGIC CIRCUIT
LED Array Does Not Operate





SERVO/SYSCON/LOGIC CIRCUIT (Continued)

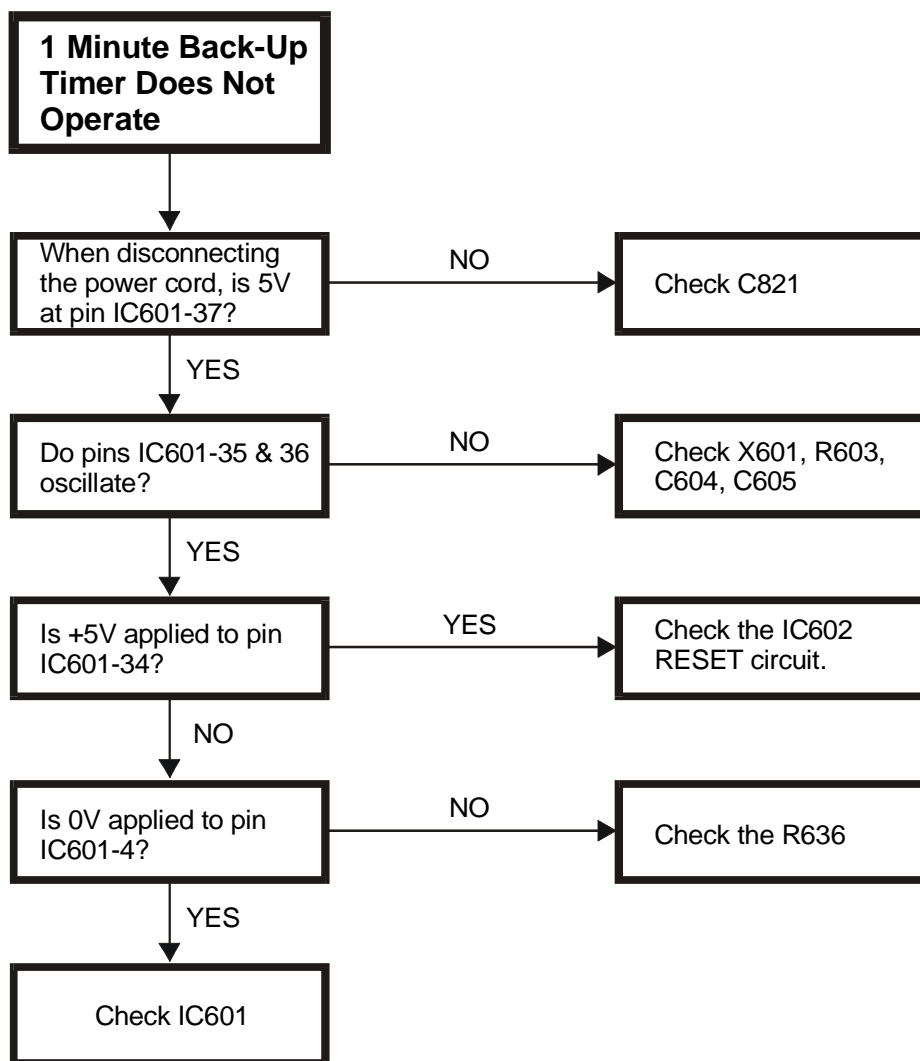
LED Array Is Lit But Key Does Not Operate





SERVO/SYSCON/LOGIC CIRCUIT (Continued)

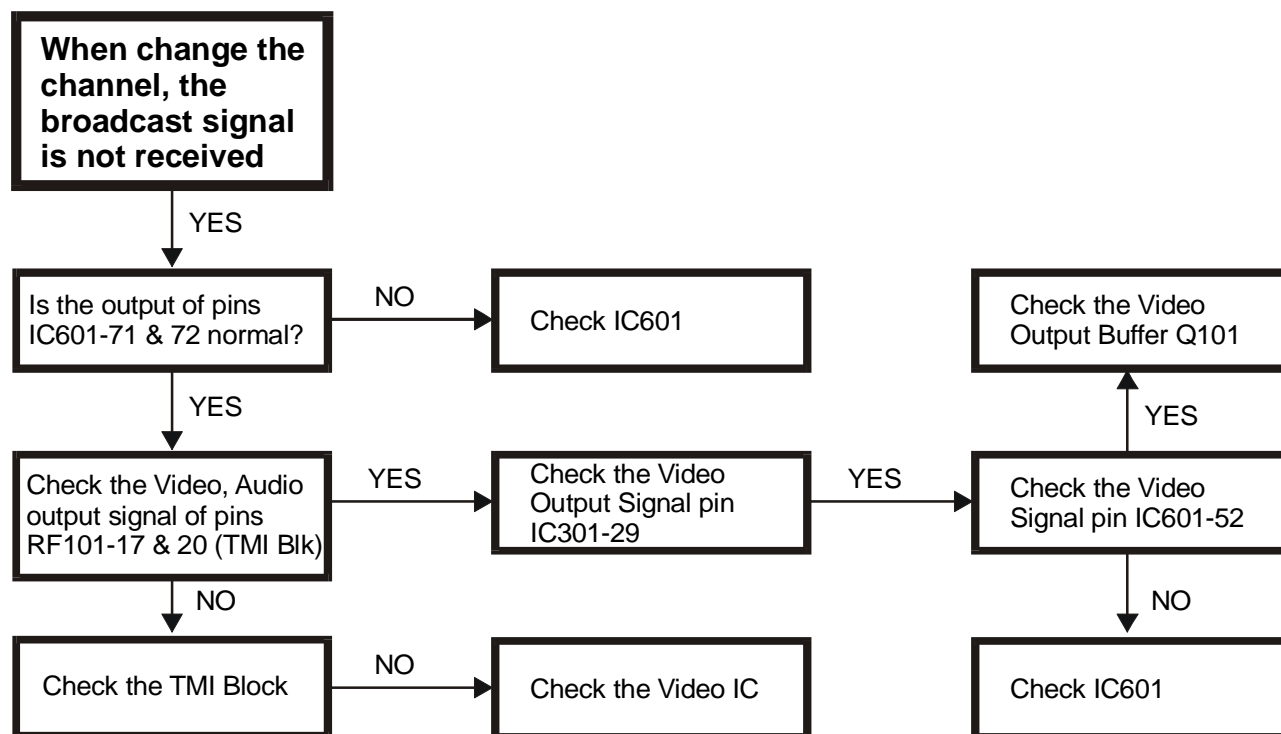
1 Minute Back-up Timer Does Not Operate





SERVO/SYSCON/LOGIC CIRCUIT (Continued)

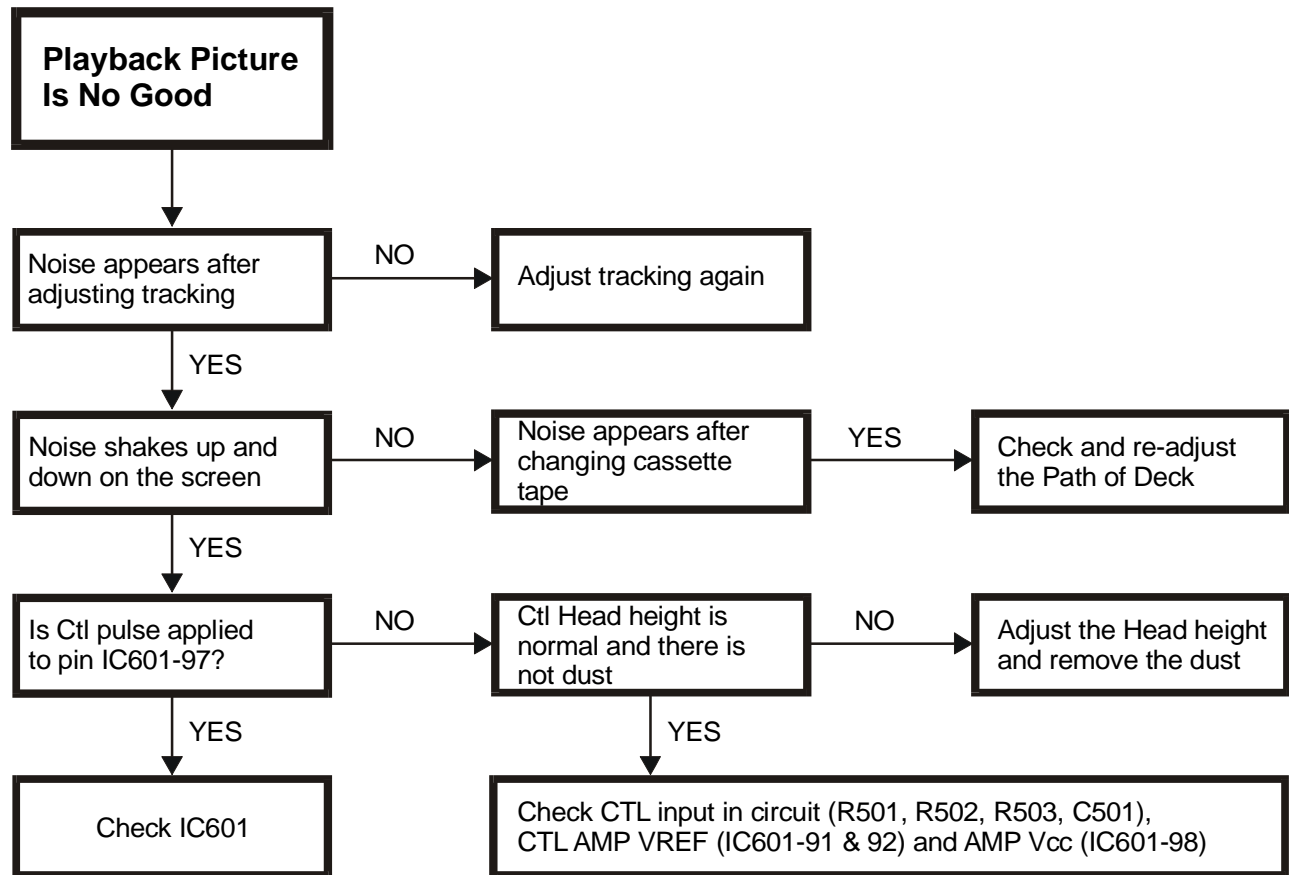
When Changing The Channel, The Broadcast Signal Is Not Received





SERVO/SYSCON/LOGIC CIRCUIT (Continued)

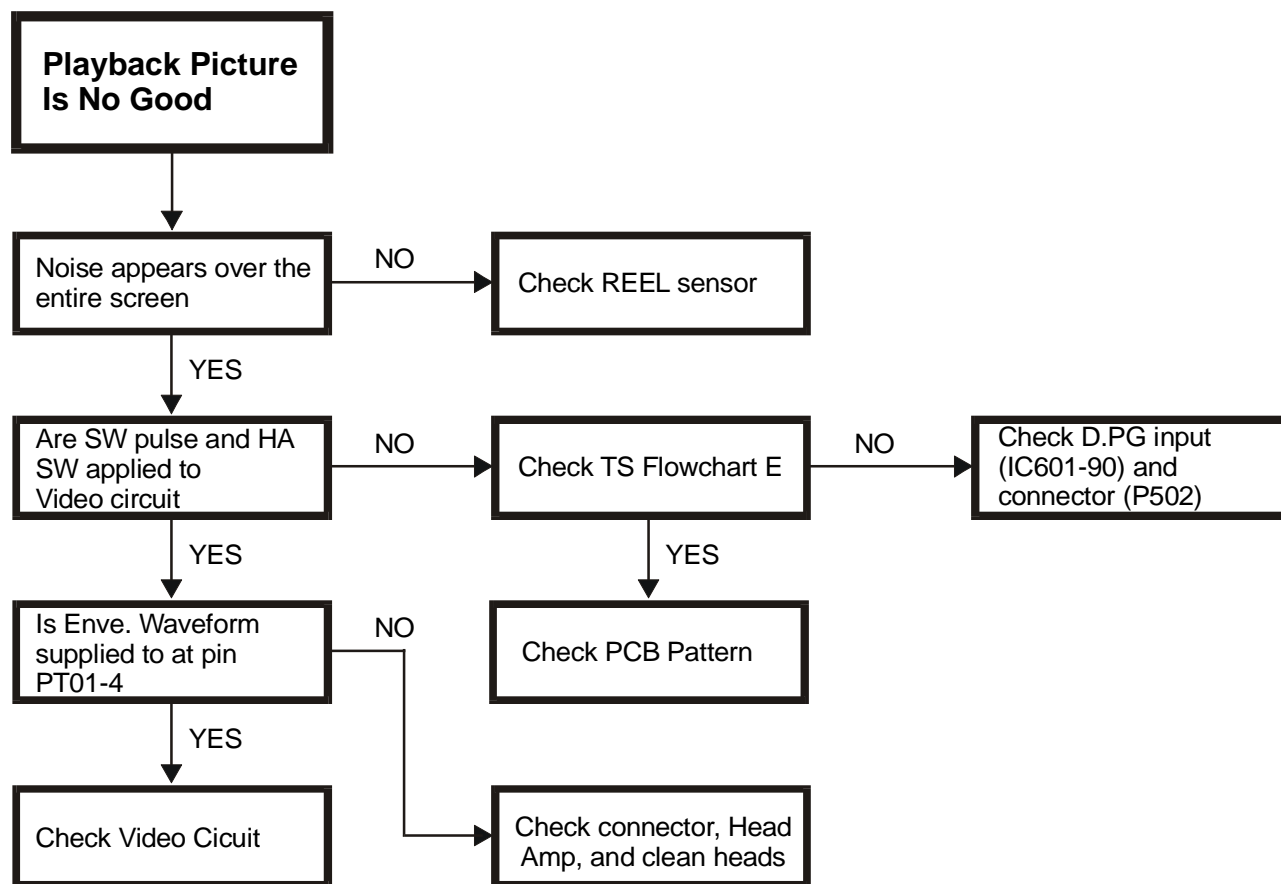
Playback Picture Is Not Good





SERVO/SYSCON/LOGIC CIRCUIT (Continued)

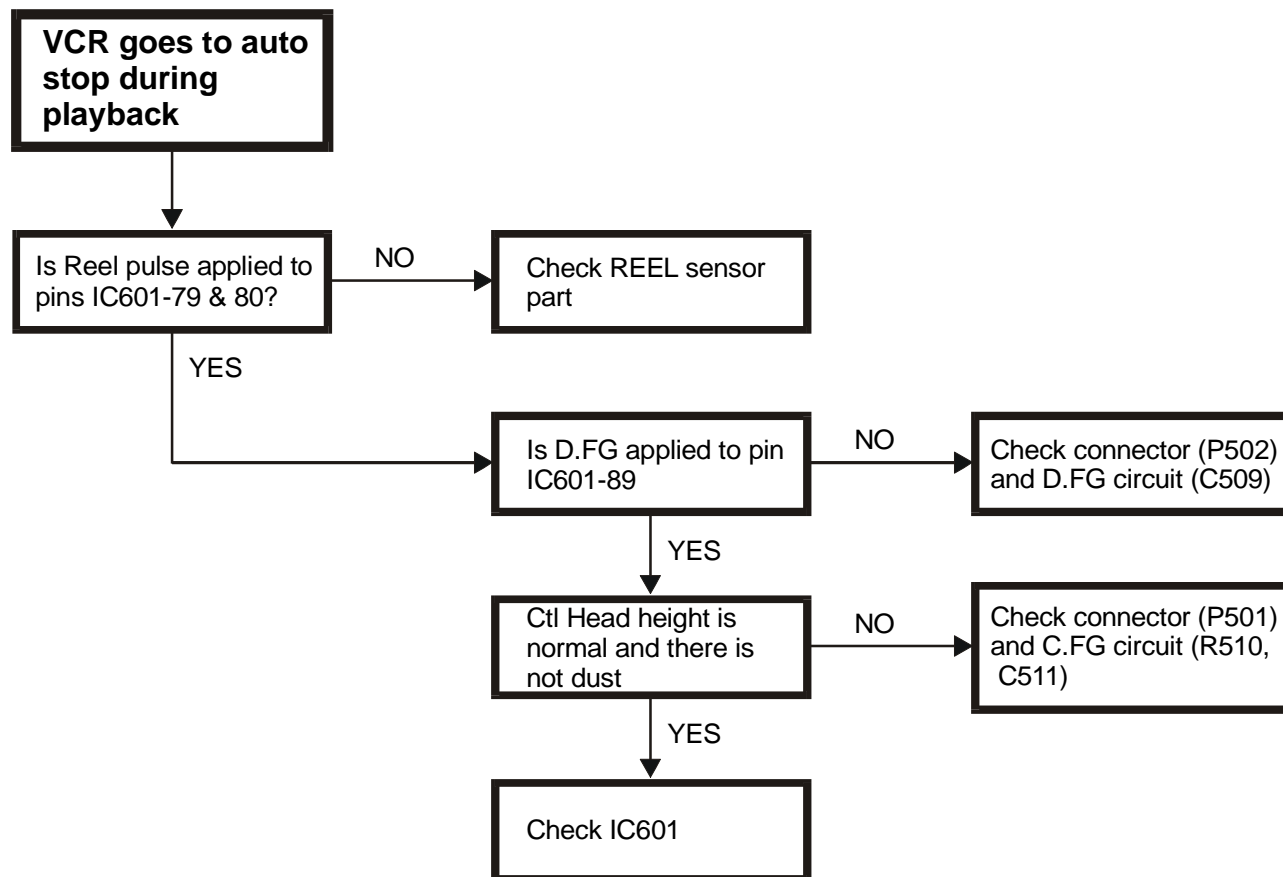
Playback Picture Is Not Good





SERVO/SYSCON/LOGIC CIRCUIT (Continued)

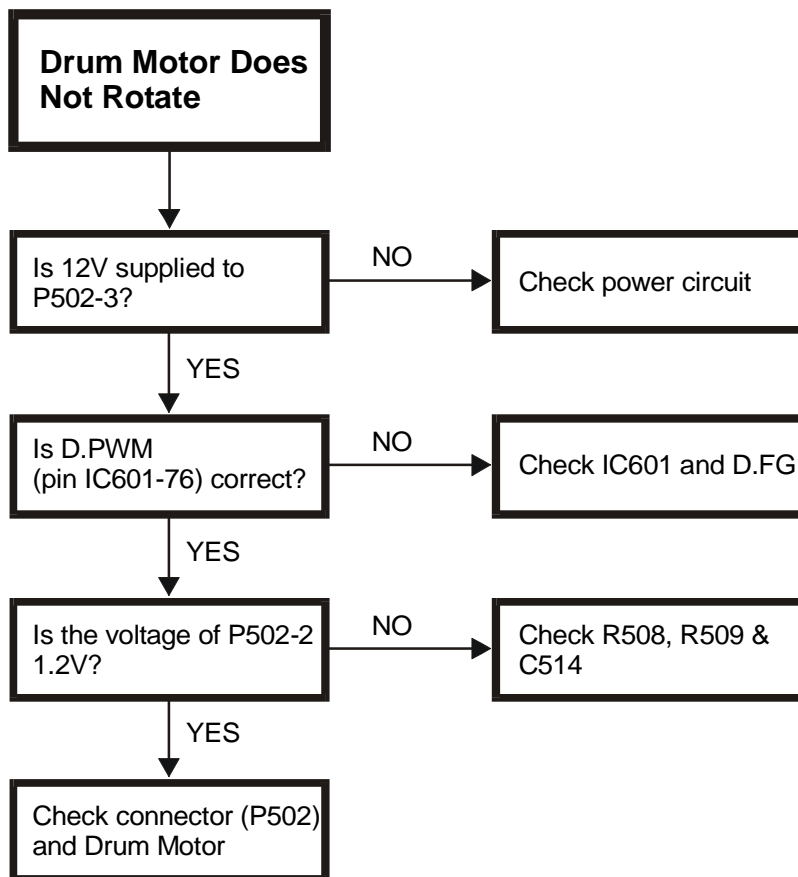
VCR Goes To Auto Stop During Playback





SERVO/SYSCON/LOGIC CIRCUIT (Continued)

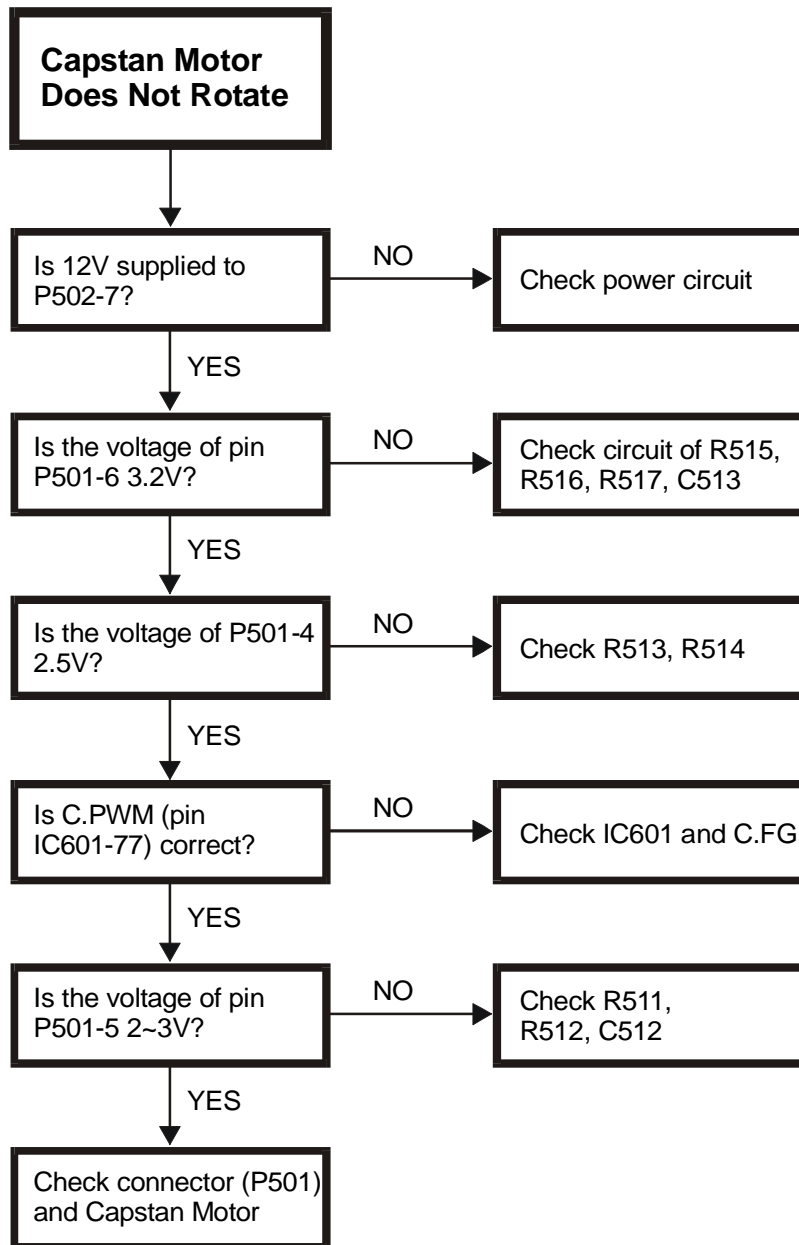
Drum Motor Does Not Rotate





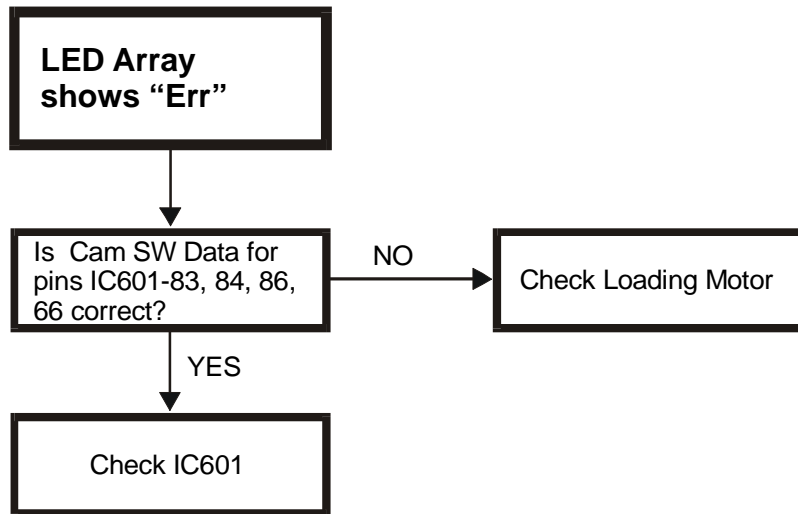
SERVO/SYSCON/LOGIC CIRCUIT (Continued)

Capstan Motor Does Not Rotate





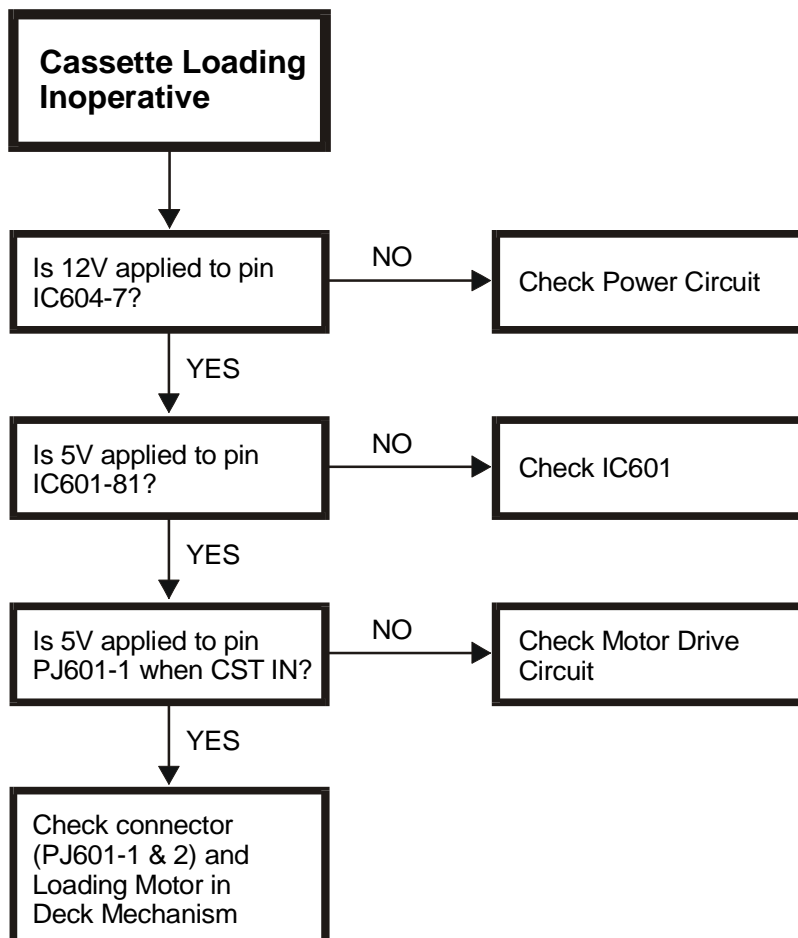
SERVO/SYSCON/LOGIC CIRCUIT (Continued)
LED Array shows "Err"





SERVO/SYSCON/LOGIC CIRCUIT (Continued)

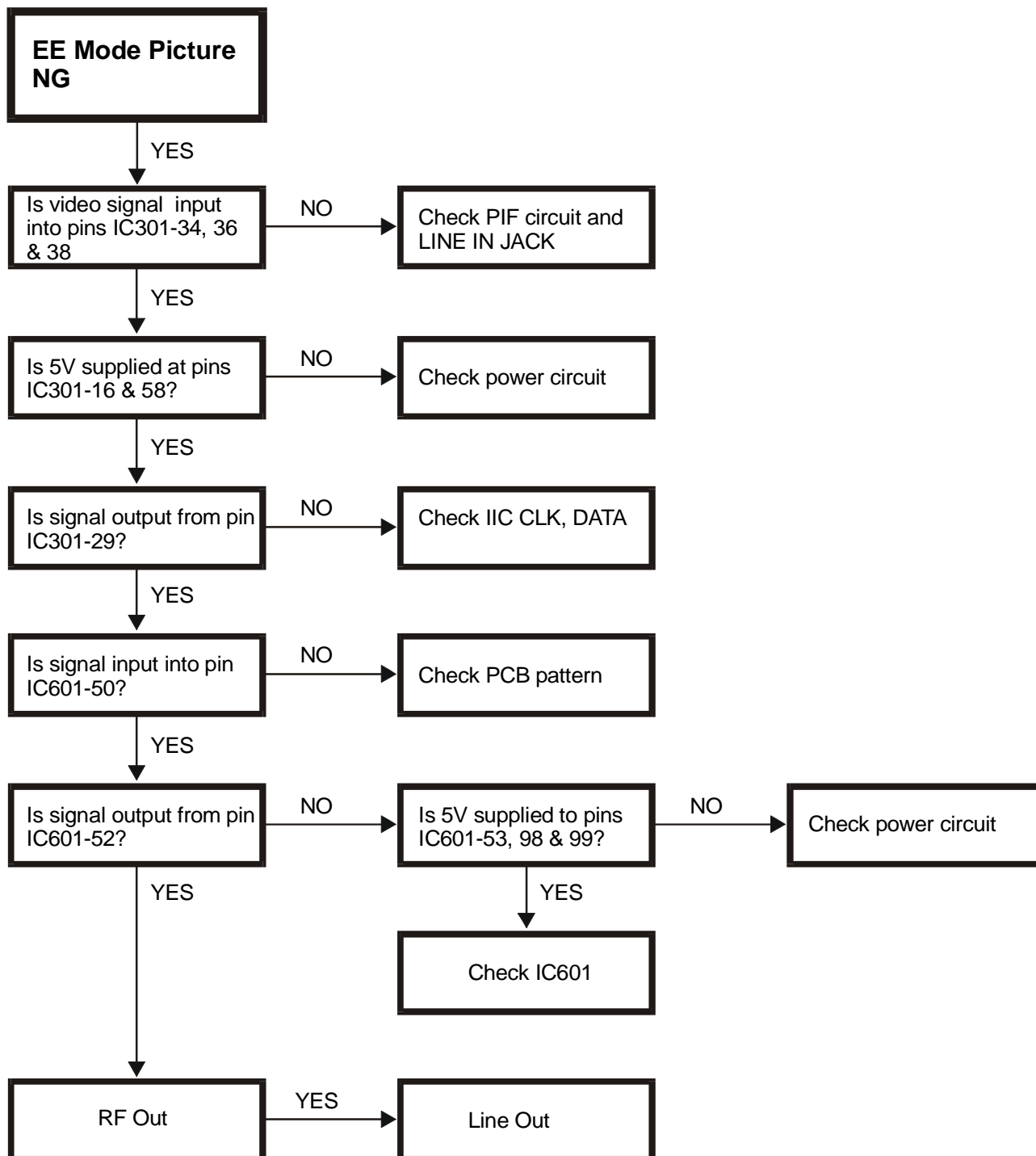
Cassette Loading Inoperative





Video Circuit

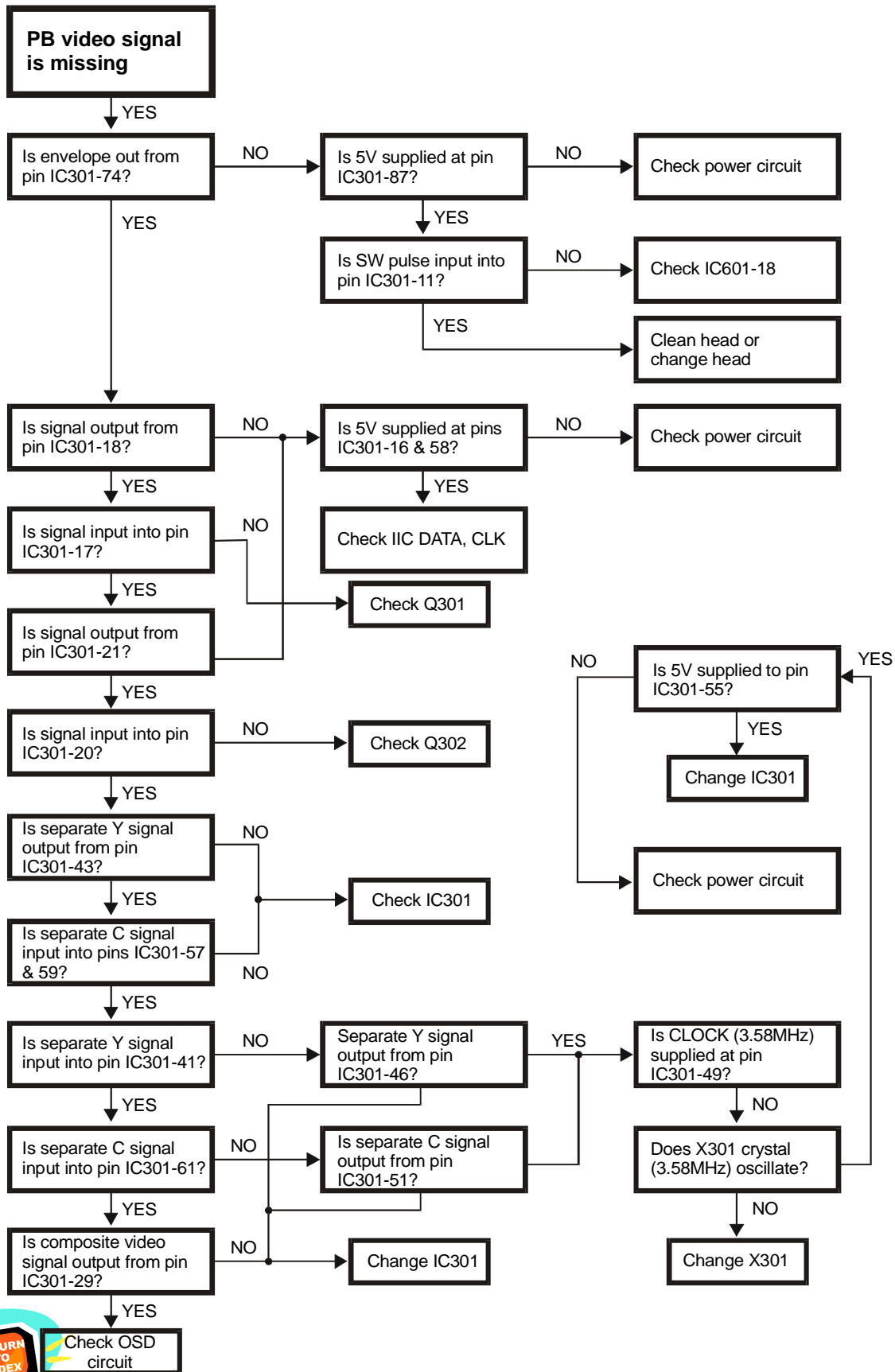
EE Mode Picture NG





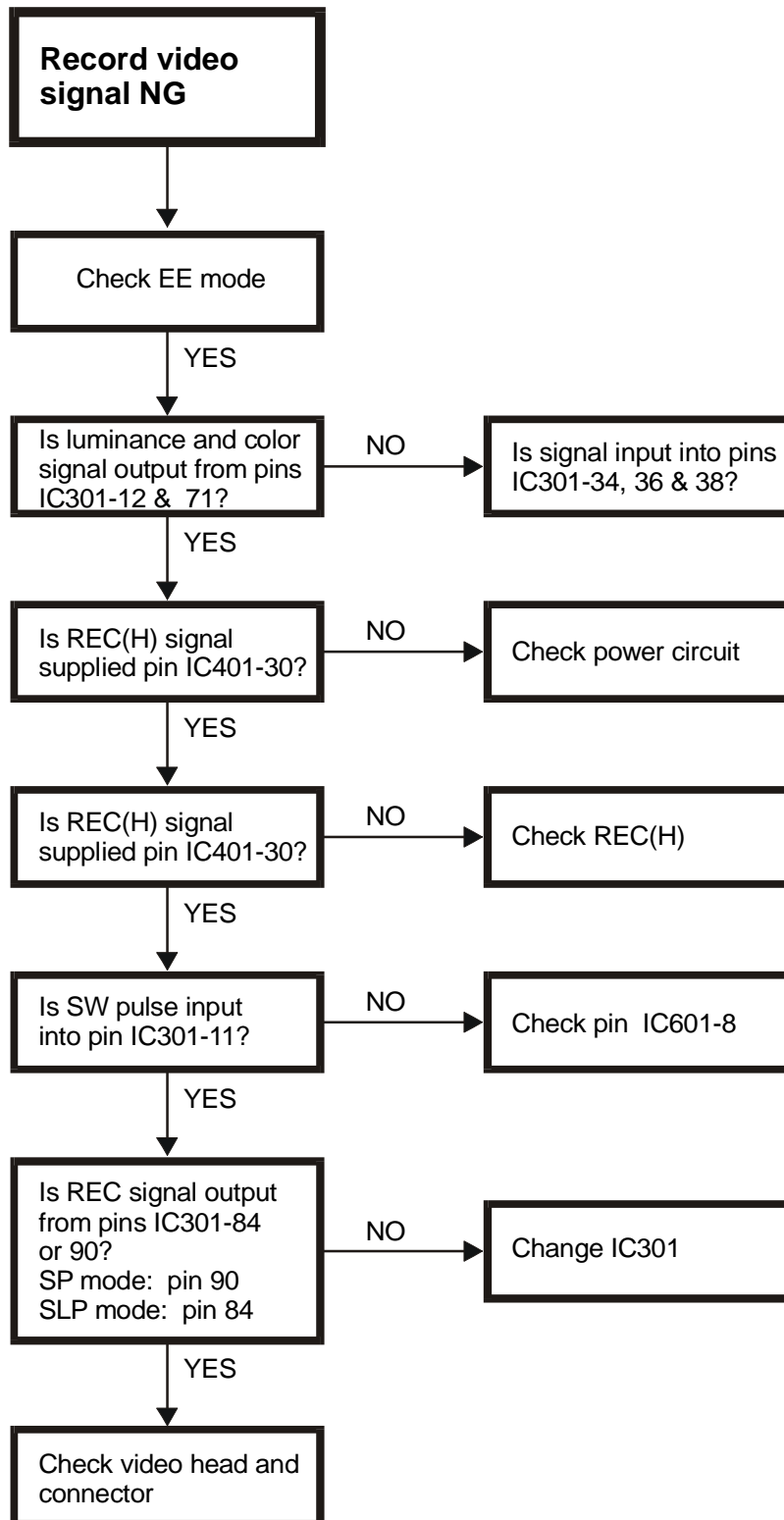
Video Circuit (Continued)

PB Video Signal Missing



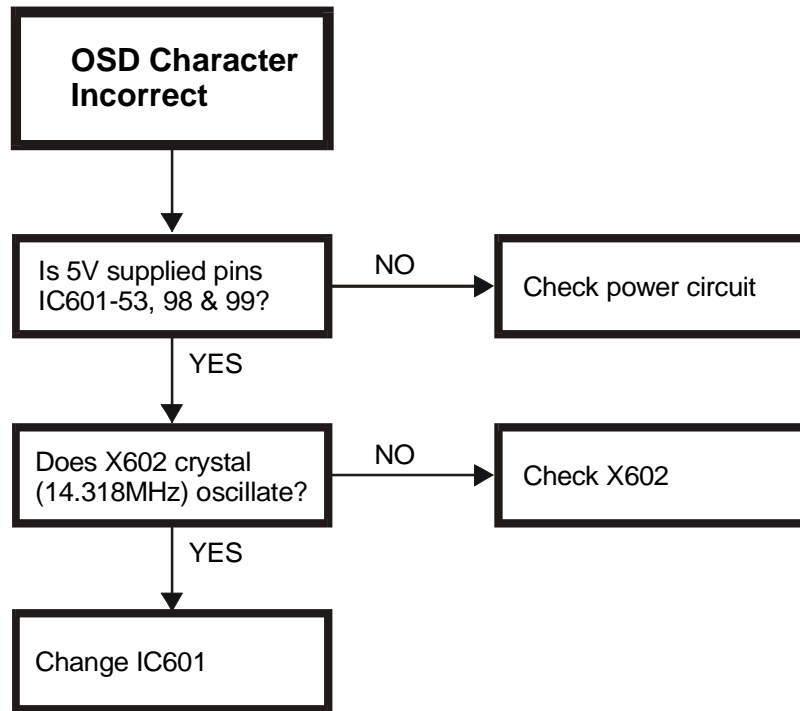


Video Circuit (Continued)
Record Video Signal NG



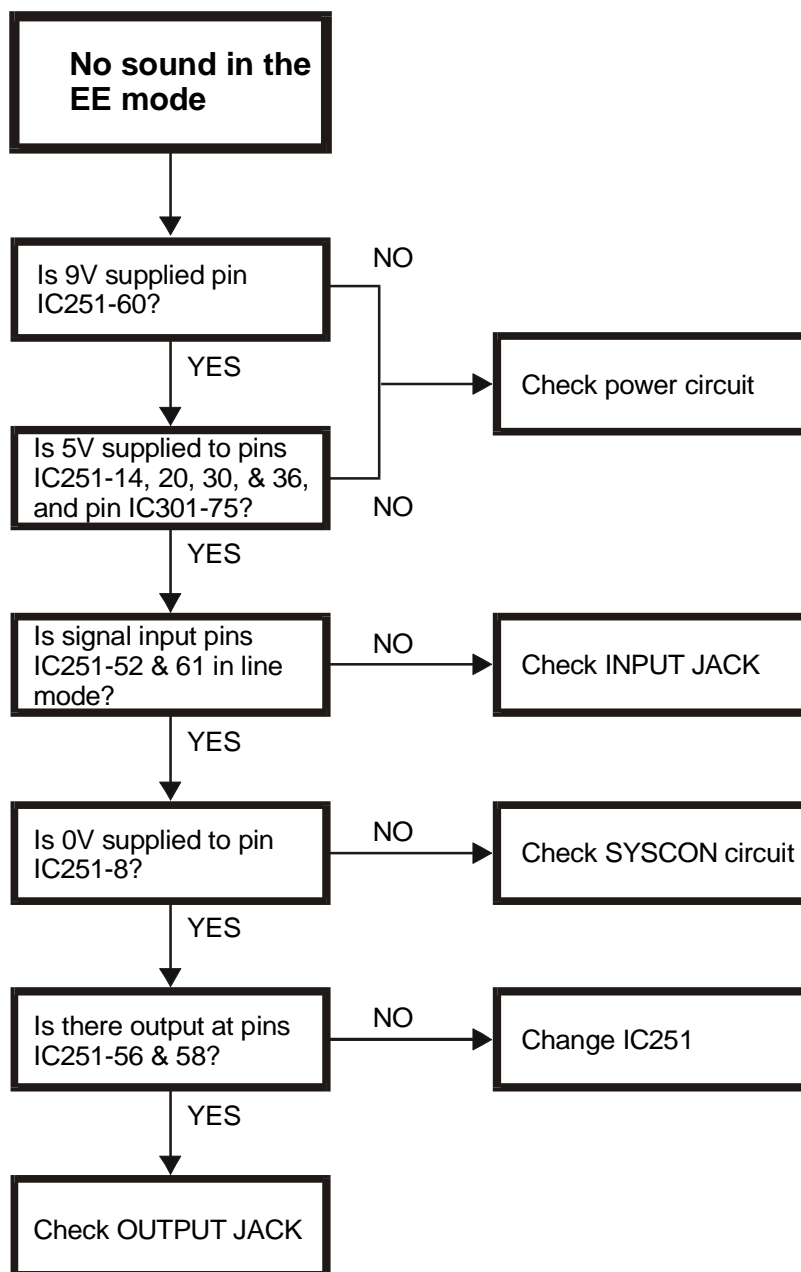


Video Circuit (Continued)
OSD Character Incorrect





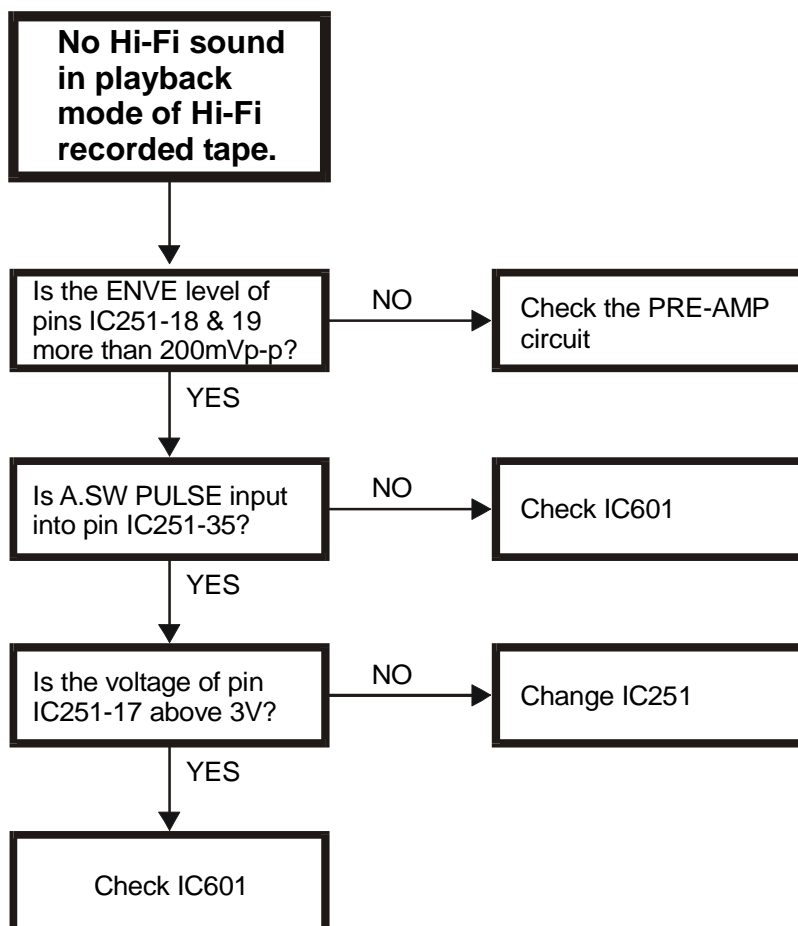
Audio Circuit
No Sound In The EE Mode





Audio Circuit (Continued)

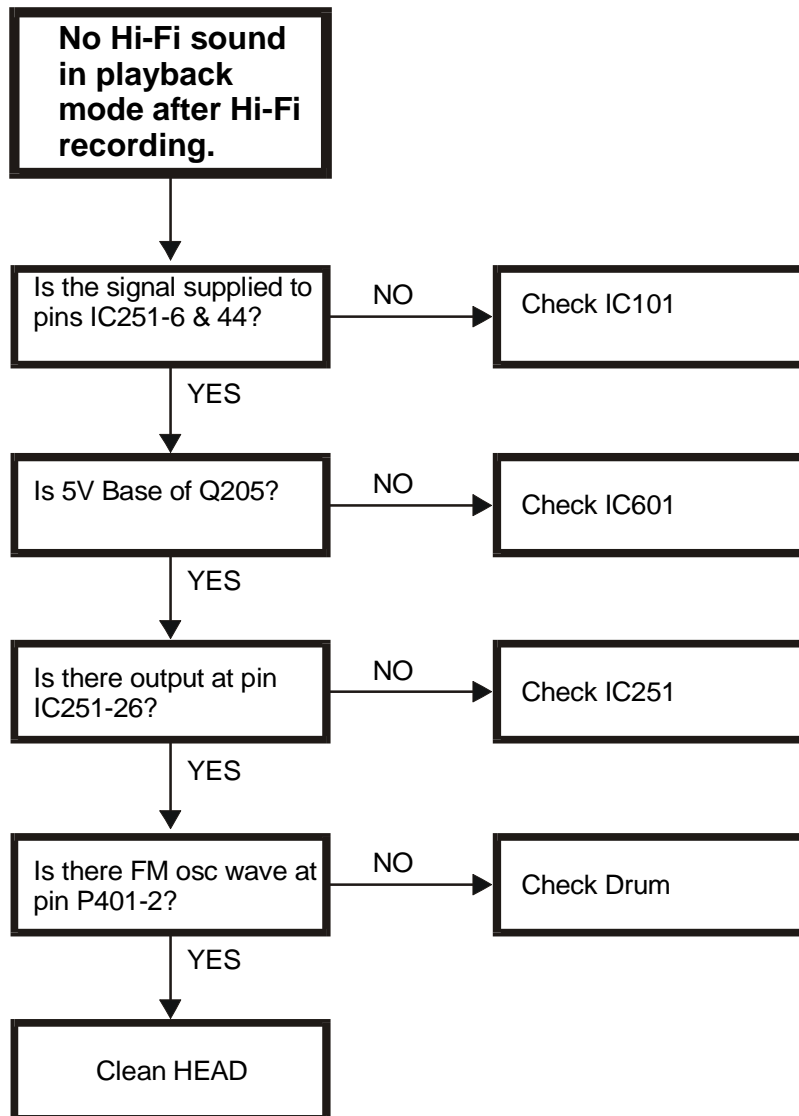
No Hi-Fi Sound In Playback Mode of Hi-Fi Recorded Tape





Audio Circuit (Continued)

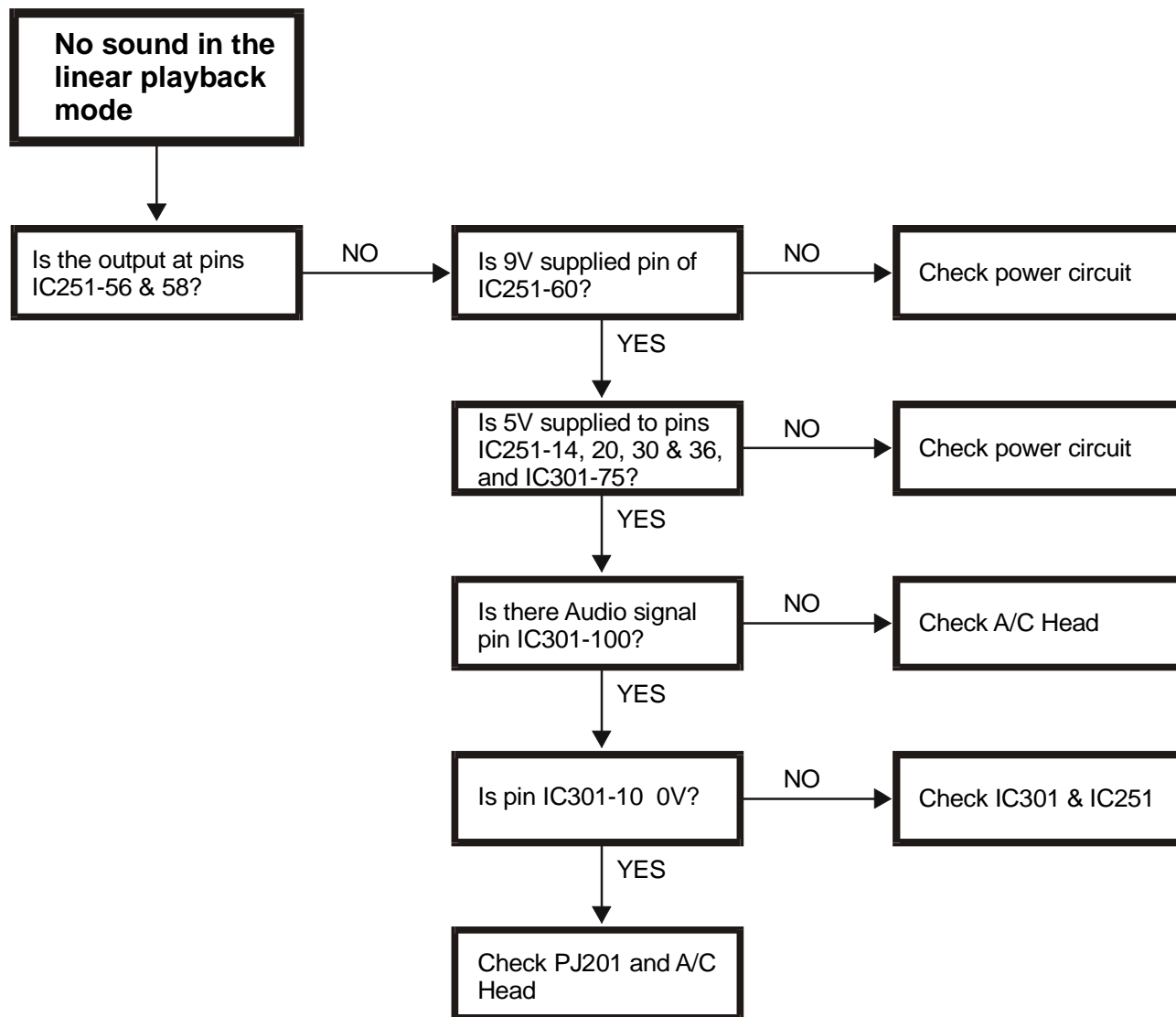
No Hi-Fi Sound In Playback Mode After Hi-Fi Recording.
Check the following procedure in Record mode.





Audio Circuit (Continued)

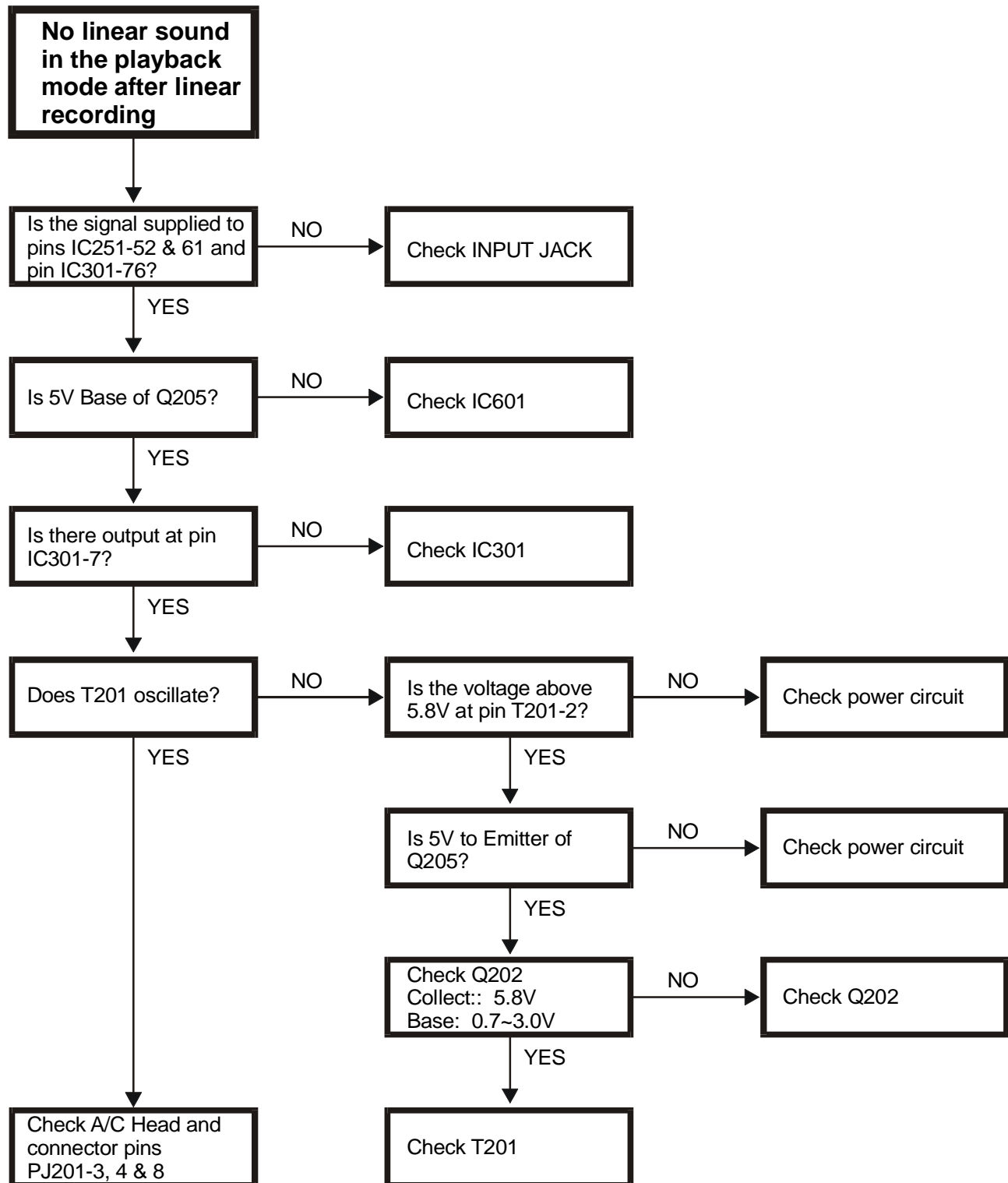
No Sound In The Linear Playback Mode





Audio Circuit (Continued)

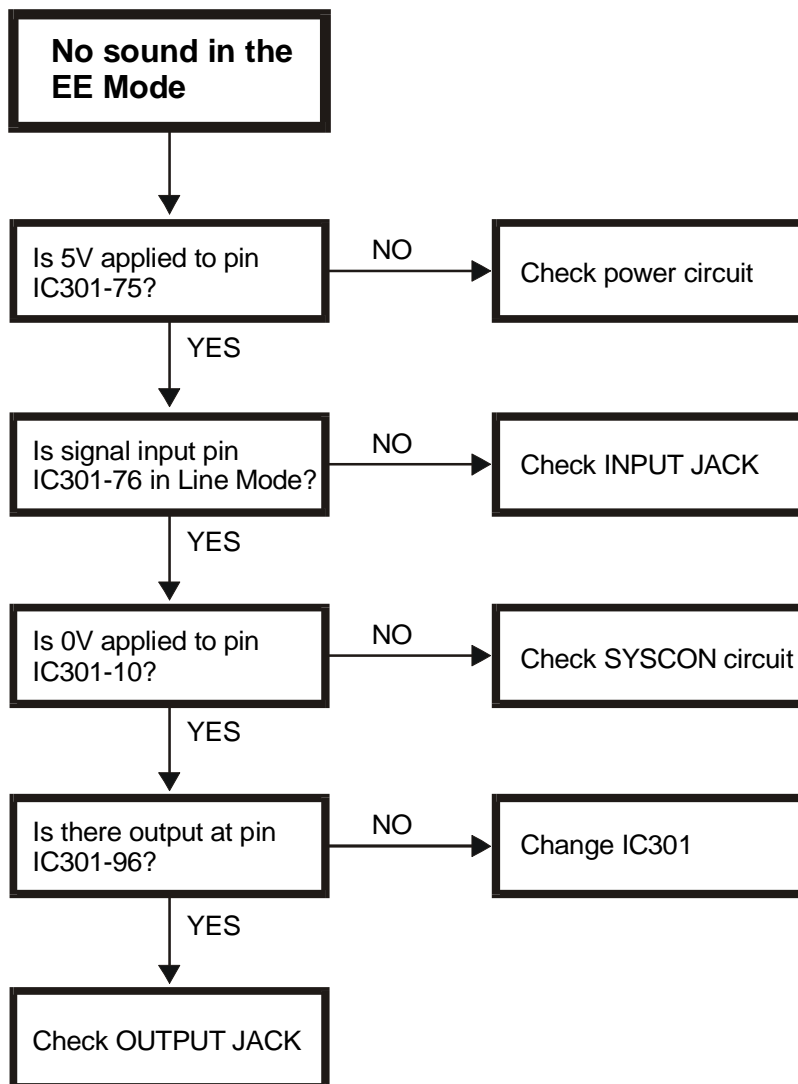
No Linear Sound In The Playback Mode After Linear Recording.
Check The Following Procedure In Record Mode.





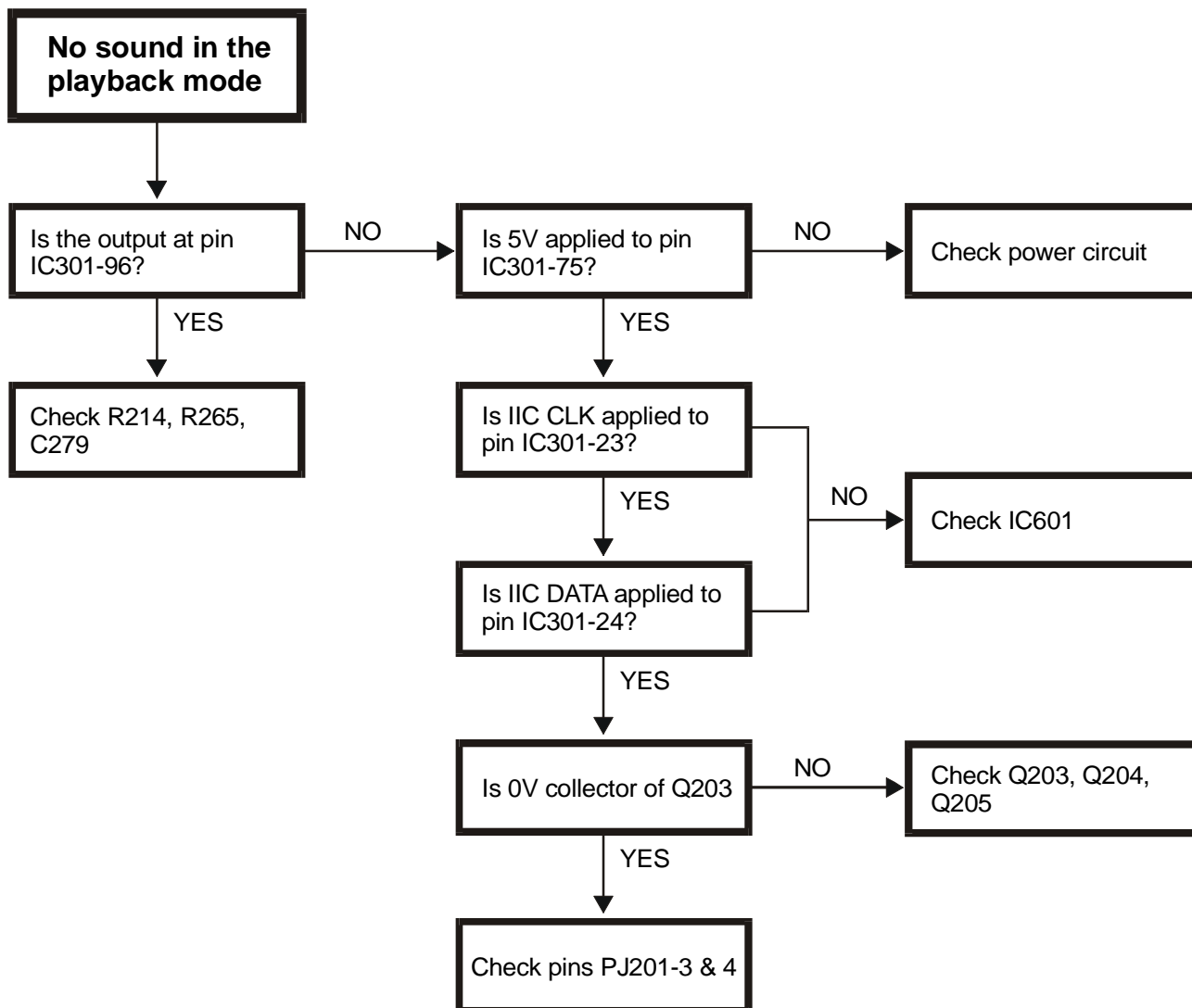
Audio Circuit (2/4 Head)

No Sound In The E-E Mode





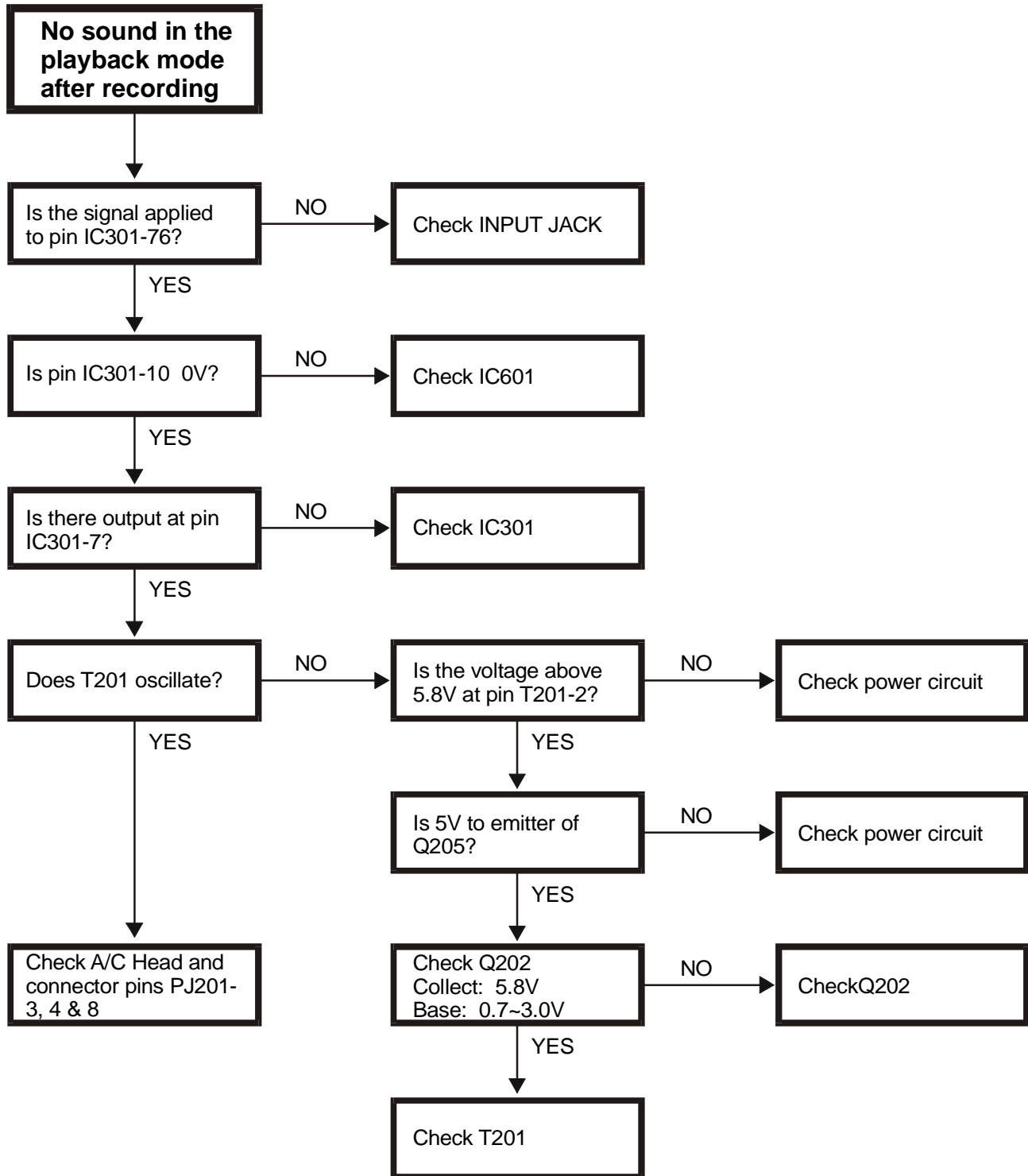
Audio Circuit (2/4 Head) (Continued)
No Sound In The Playback Mode





Audio Circuit (2/4 Head) (Continued)

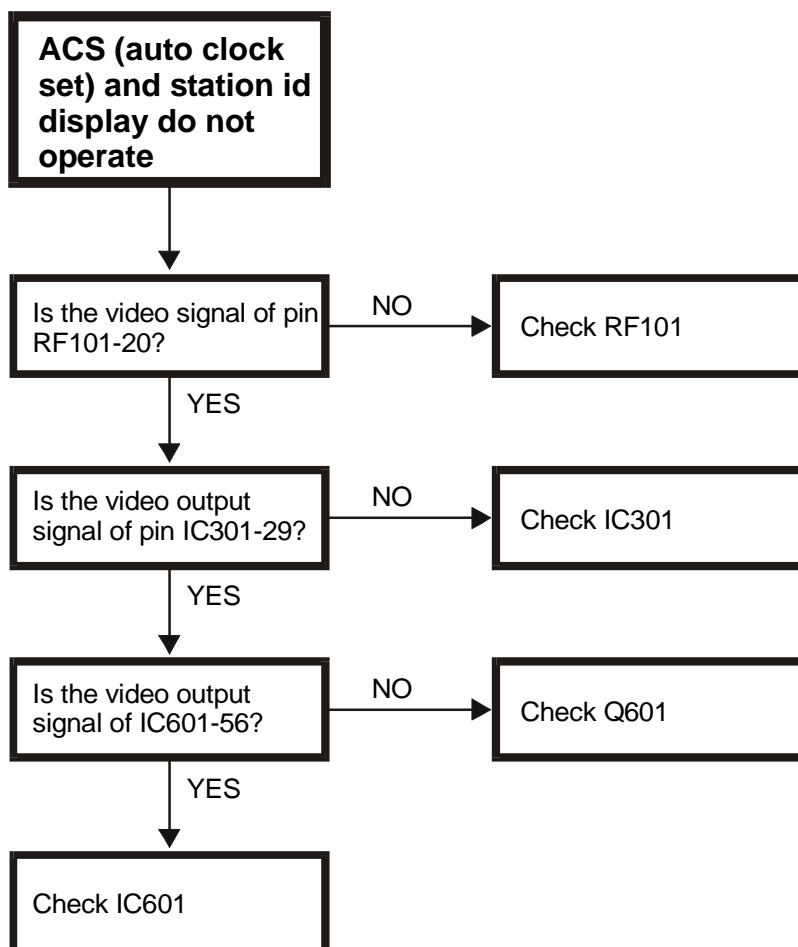
No Sound In The Playback Mode After Recording.
Check the following procedure in Record mode.





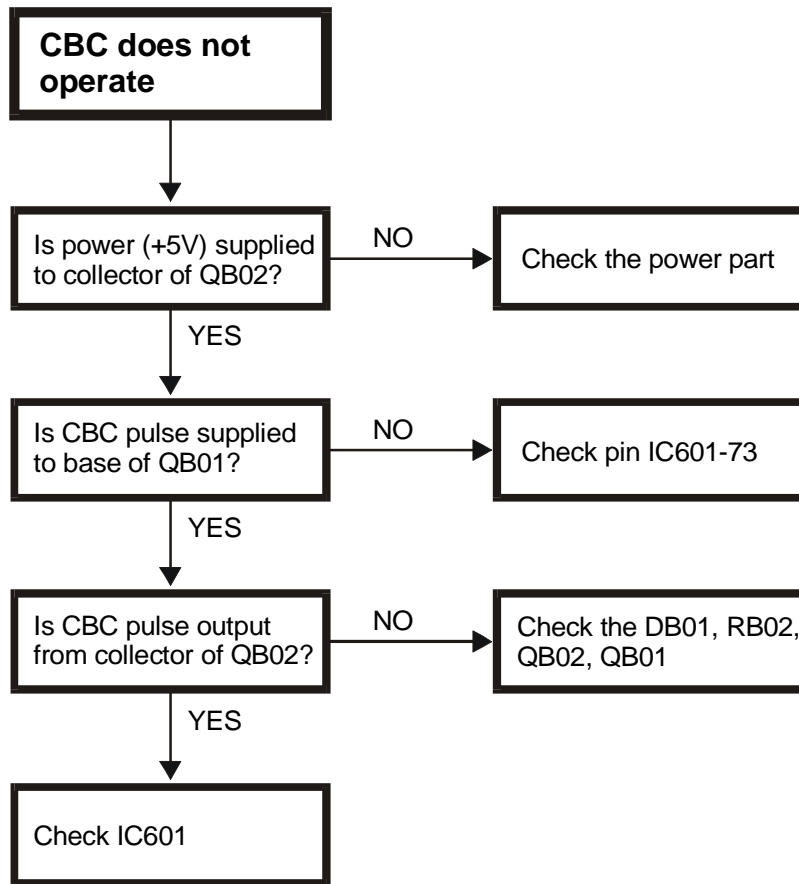
Extended Data Service Circuit

ACS (Auto Clock Set) and Station ID Display Does Not Operate



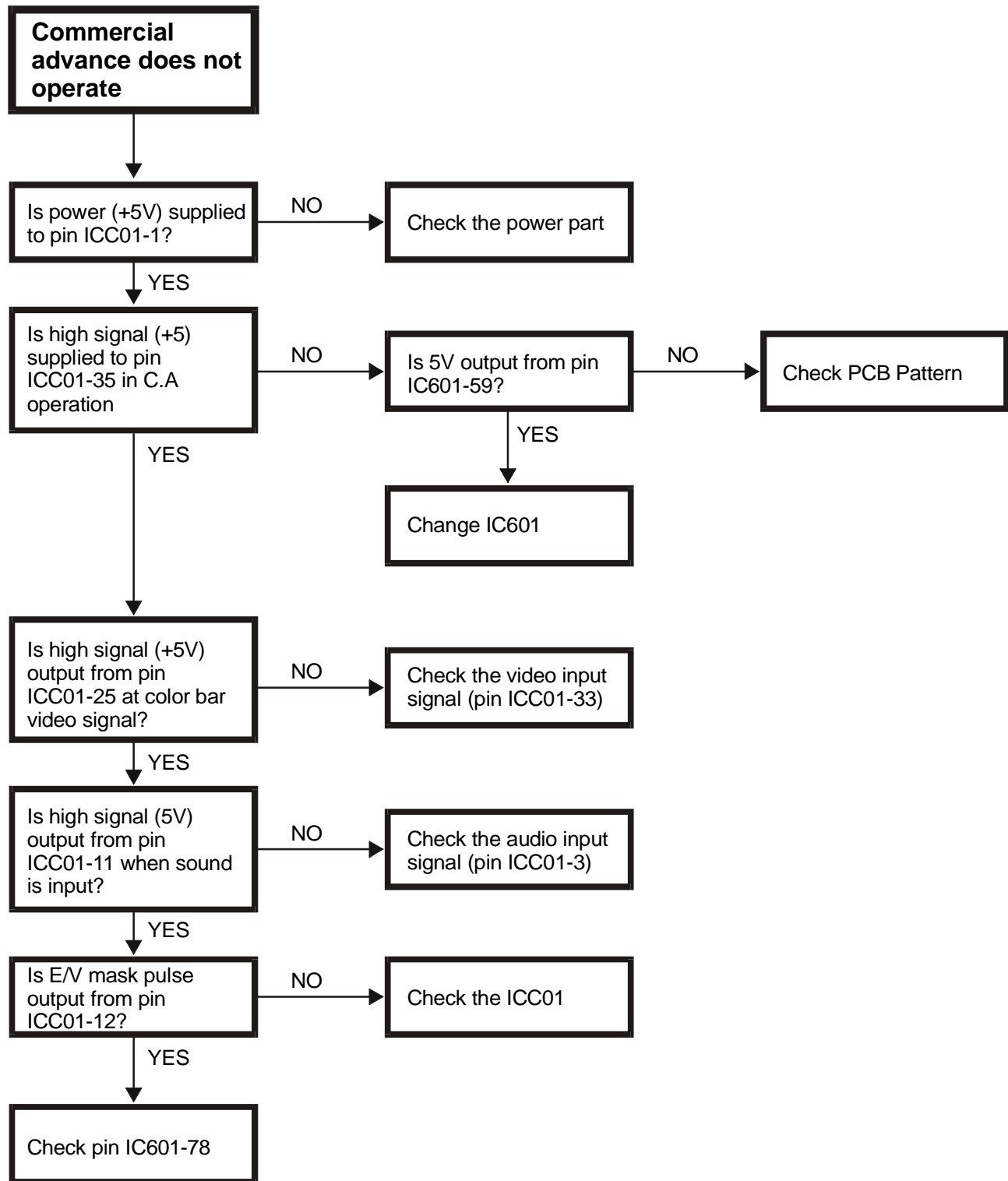


CBC Circuit
CBC Does Not Operate





Commercial Advance Circuit
Commercial Advance Does Not Operate





Commercial Advance Circuit (Continued)
Movie Advance Does Not Operate

