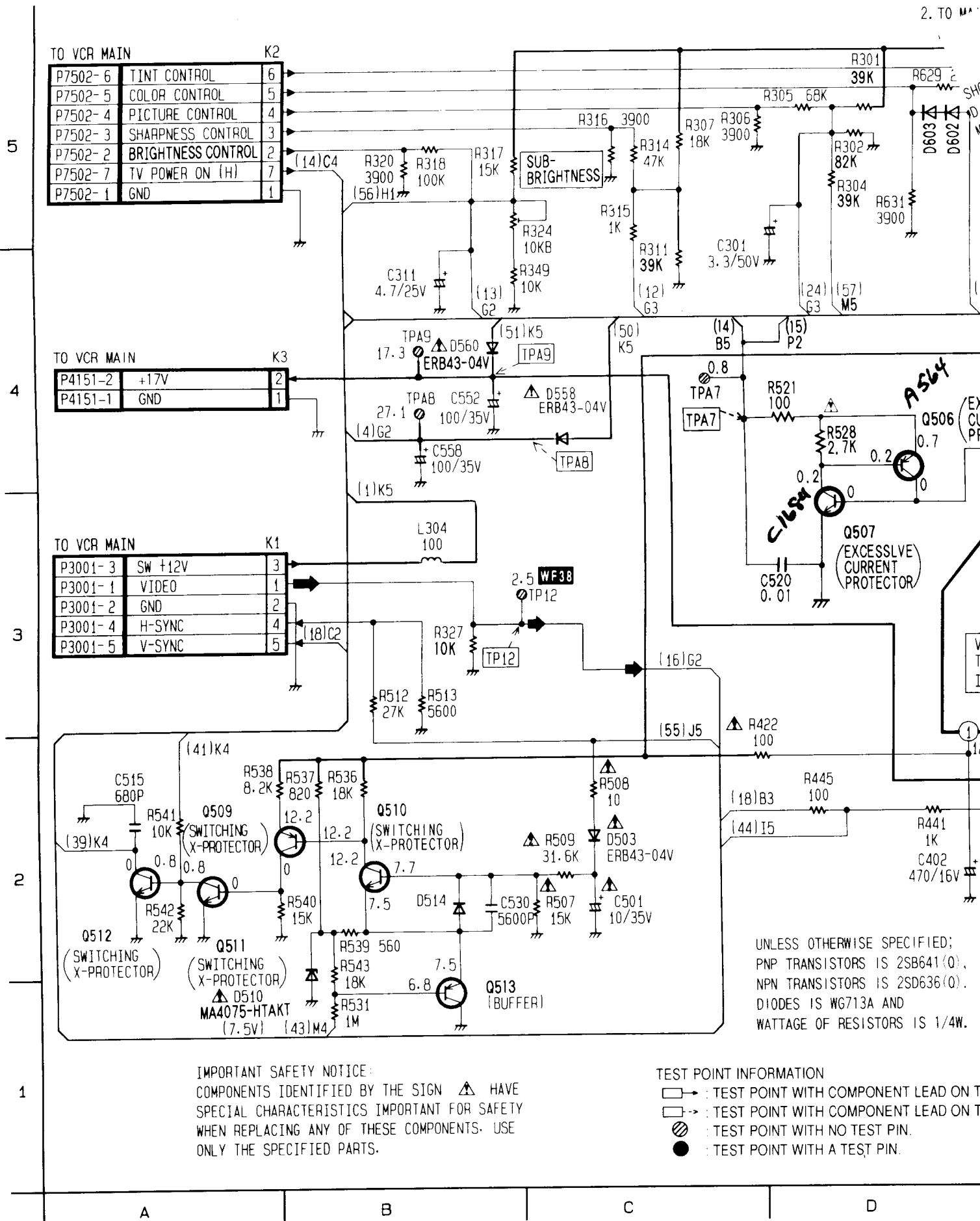


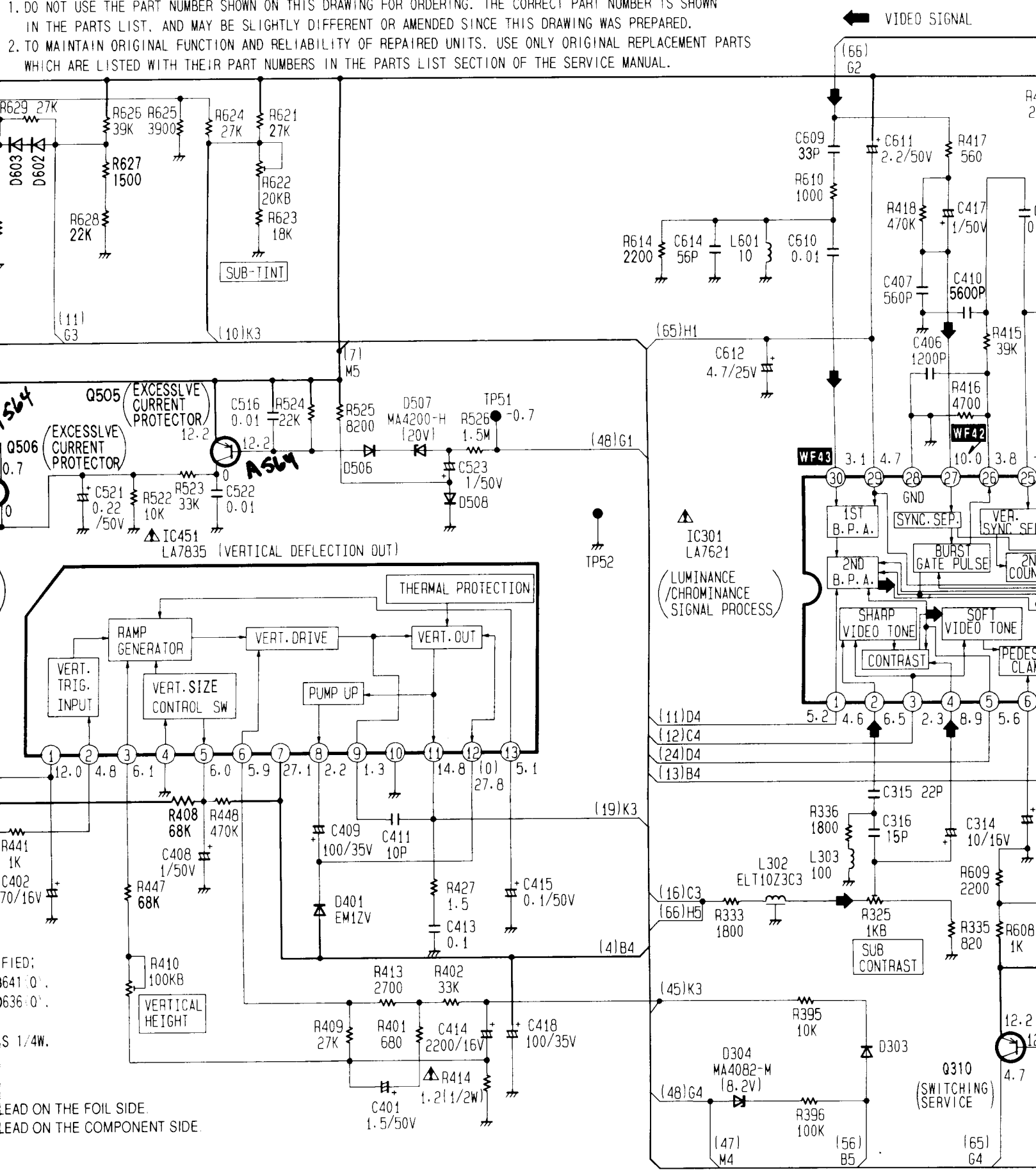
TV MAIN SCHEMATIC DIAGRAM

NOTE:

1. DO NOT
- IN THE
2. TO MA



1. DO NOT USE THE PART NUMBER SHOWN ON THIS DRAWING FOR ORDERING. THE CORRECT PART NUMBER IS SHOWN IN THE PARTS LIST, AND MAY BE SLIGHTLY DIFFERENT OR AMENDED SINCE THIS DRAWING WAS PREPARED.
2. TO MAINTAIN ORIGINAL FUNCTION AND RELIABILITY OF REPAIRED UNITS, USE ONLY ORIGINAL REPLACEMENT PARTS WHICH ARE LISTED WITH THEIR PART NUMBERS IN THE PARTS LIST SECTION OF THE SERVICE MANUAL.



FIED;
 8641 (Q)
 0636 (Q)
 S 1/4W.

LEAD ON THE FOIL SIDE.
LEAD ON THE COMPONENT SIDE

E

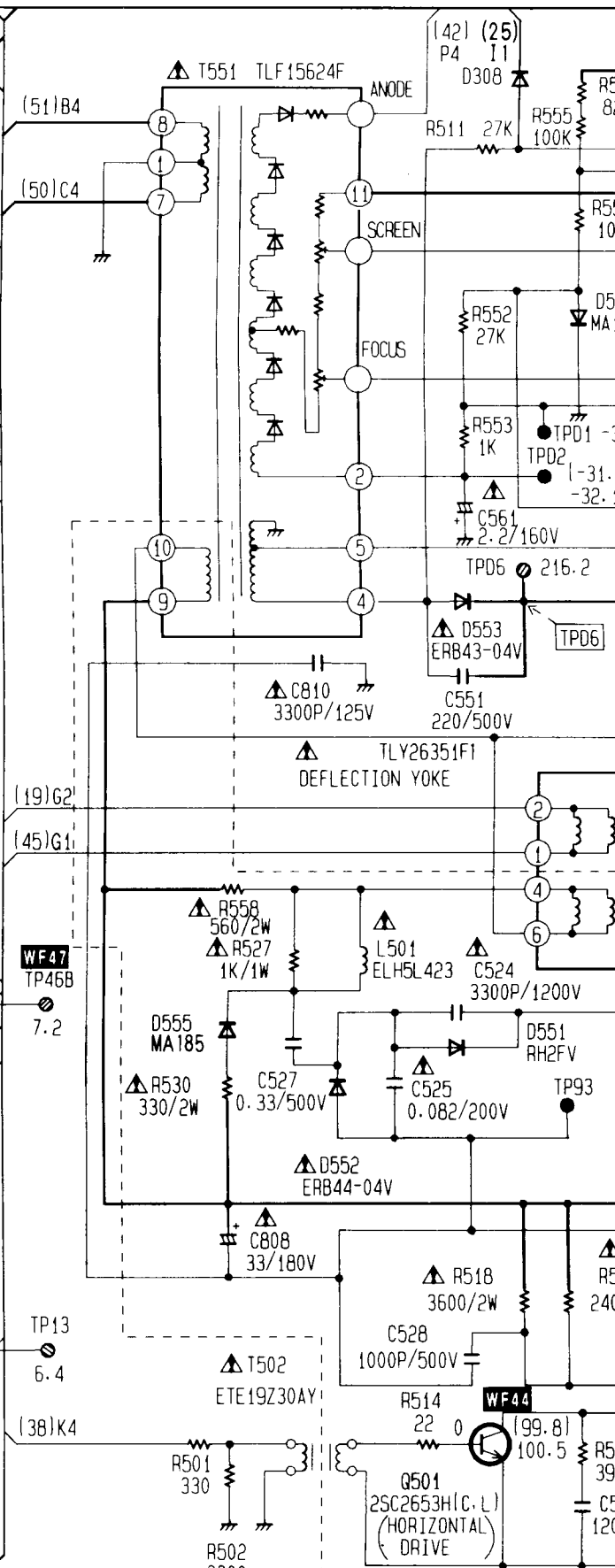
F

G

T

100) B4

SIGNAL



Q310
SWITCHING
SERVICE

18
G

I

J

K

L

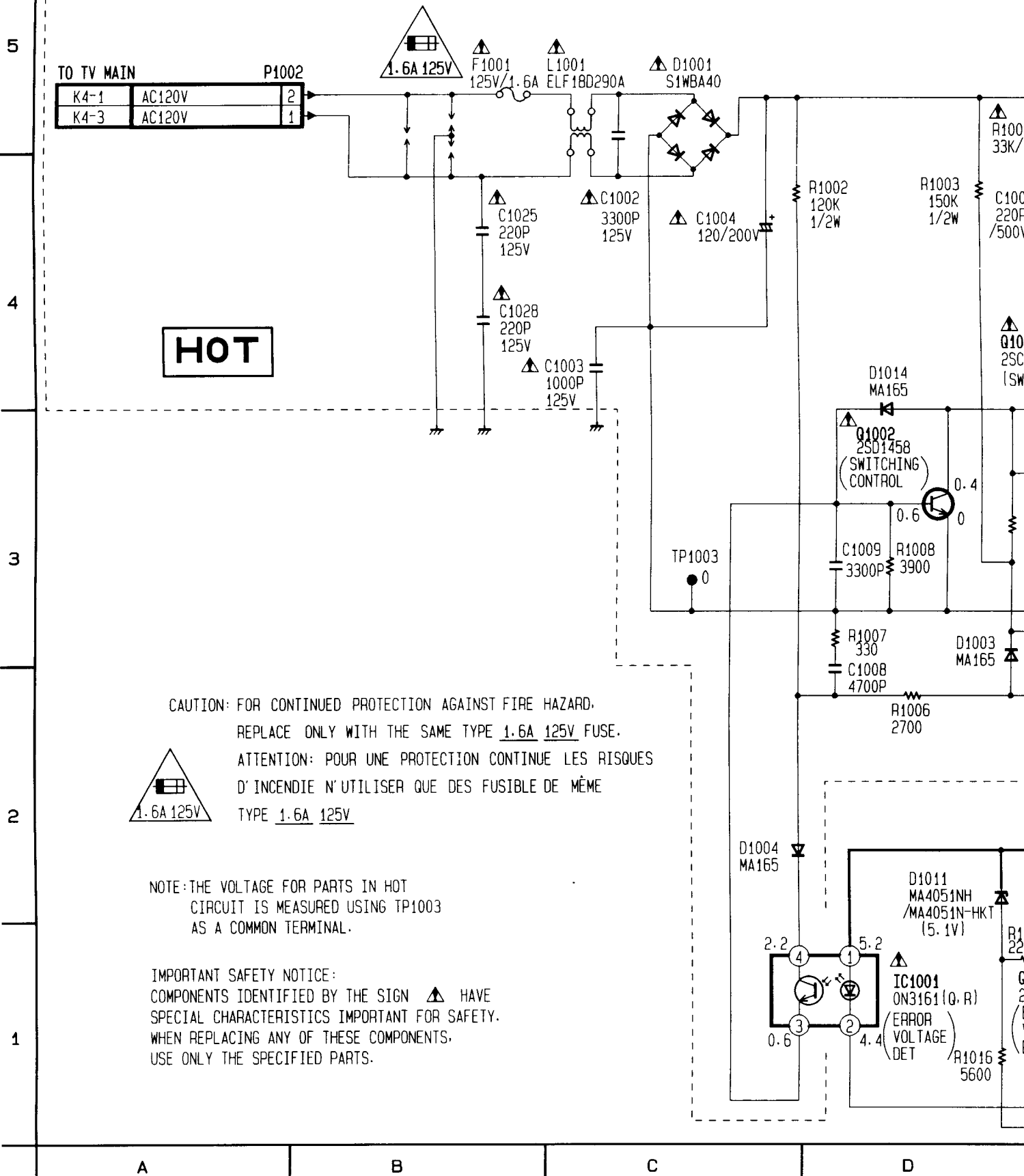
0.05

226

III. SCHEMATIC DIAGRAMS

POWER SUPPLY SCHEMATIC DIAGRAM

HOT CIRCUIT. BE CAREFUL AND USE AN ISOLATION TRANSFORMER



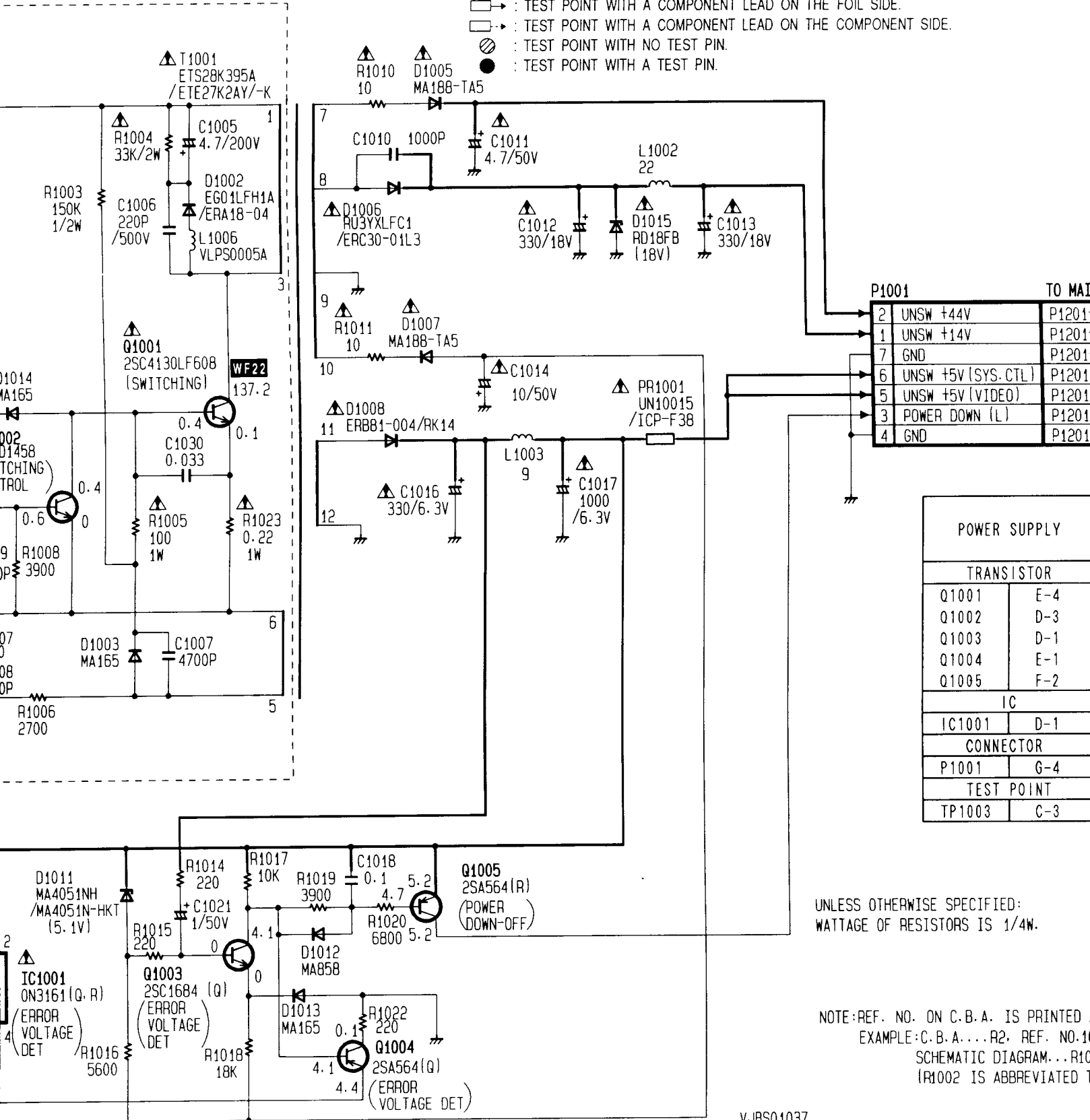
NOTE:

1. DO NOT USE THE PART NUMBER SHOWN ON THIS DRAWING FOR ORDERING. THE CORRECT PART NUMBER IS SHOWN IN THE PARTS LIST, AND MAY BE SLIGHTLY DIFFERENT OR AMENDED SINCE THIS DRAWING WAS PREPARED.
2. TO MAINTAIN ORIGINAL FUNCTION AND RELIABILITY OF REPAIRED UNITS, USE ONLY ORIGINAL REPLACEMENT PARTS WHICH ARE LISTED WITH THEIR PART NUMBERS IN THE PARTS LIST SECTION OF THE SERVICE MANUAL.

TRANSFORMER WHEN SERVICING.

TEST POINT INFORMATION

- → : TEST POINT WITH A COMPONENT LEAD ON THE FOIL SIDE.
- → : TEST POINT WITH A COMPONENT LEAD ON THE COMPONENT SIDE.
- ⊗ : TEST POINT WITH NO TEST PIN.
- : TEST POINT WITH A TEST PIN.



UNLESS OTHERWISE SPECIFIED:
WATTAGE OF RESISTORS IS 1/4W.

NOTE: REF. NO. ON C.B.A. IS PRINTED
EXAMPLE: C.B.A. ... R2, REF. NO. 1
SCHEMATIC DIAGRAM ... R10
R1002 IS ABBREVIATED T

VJBS01037

D

E

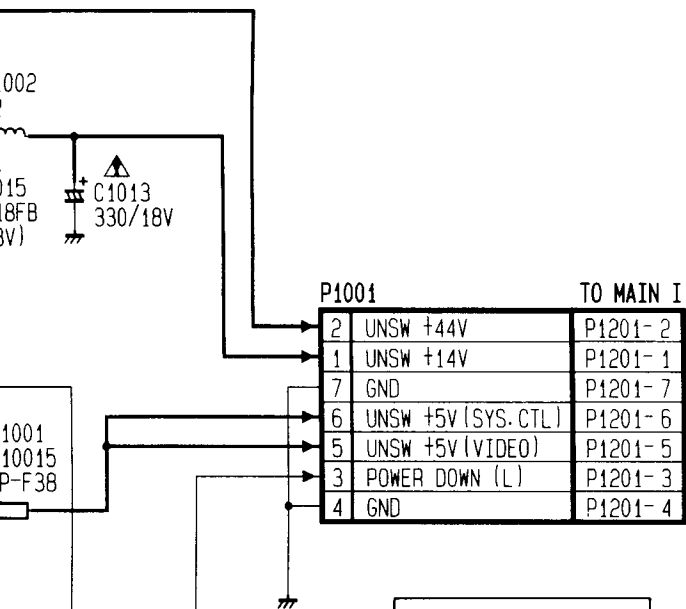
F

G

H

DERING. THE CORRECT PART NUMBER IS SHOWN
 NDED SINCE THIS DRAWING WAS PREPARED.
 ED UNITS. USE ONLY ORIGINAL REPLACEMENT PARTS
 IST SECTION OF THE SERVICE MANUAL.

COMPONENT LEAD ON THE FOIL SIDE.
 COMPONENT LEAD ON THE COMPONENT SIDE.
 O TEST PIN.
 TEST PIN.



POWER SUPPLY	
TRANSISTOR	
Q1001	E-4
Q1002	D-3
Q1003	D-1
Q1004	E-1
Q1005	F-2
IC	
IC1001	D-1
CONNECTOR	
P1001	G-4
TEST POINT	
TP1003	C-3

UNLESS OTHERWISE SPECIFIED:
 WATTAGE OF RESISTORS IS 1/4W.

NOTE: REF. NO. ON C.B.A. IS PRINTED AS FOLLOWS.
 EXAMPLE: C.B.A. . . . R2, REF. NO. 1000 SERIES.
 SCHEMATIC DIAGRAM. . . R1002
 (R1002 IS ABBREVIATED TO R2.)

VJBS01037

SERVICE CAUTION

SERVICE PROCEDURE FOR POWER SUPPLY ASS'Y

- CHECK VOLTAGE AT PINS OF P1201 ON THE MAIN C.B.A. (SEE FIG-1)
- DISCONNECT AC PLUG AND REMOVE THE FLAT CABLE FROM P1201.
- SHORT CHECK AT TERMINAL OF P1201 ON THE MAIN C.B.A. (SEE FIG-2)
- REPAIR THE MAIN C.B.A.
- REMOVE THE SHIELD CASE FROM THE POWER SUPPLY ASS'Y AND RECONNECT THE FLAT CABLE WITH P1201 FOR REPAIR.

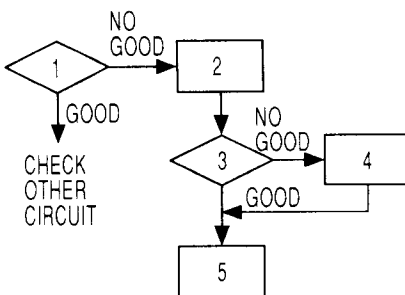


FIG-1
 VOLTAGES IN STOP
 MODE UNDER NORMAL
 CONDITIONS

PIN NO	VOLTAGE
1	14.5V
2	44.5V
3	5.2V
4	0V
5	5.2V
6	5.2V
7	0V

NOTE:
 THE VOLTAGES OF
 THIS TABLE ARE
 APPROX.

FIG-2
 RESISTANCE UNDER
 NORMAL CONDITIONS.

PIN NO	RESISTANCE
1	MORE THAN 30Ω
2	MORE THAN 500Ω
3	MORE THAN 500Ω
4	-----
5	MORE THAN 25Ω
6	MORE THAN 25Ω
7	-----

NOTE:
 1. PIN 4 OF THE TERMINALS
 SHOULD BE GROUND IN
 THIS MEASUREMENT.
 2. RESISTANCES IN THIS
 TABLE ARE APPROX.

CAN

AUDIO/

AU

AU

CO

TO MAI

P6201

P6201

P6201

P6201

P6201

P6201

P6201

P6201

P6201

P6201

P6201

P6201

P6201

P6201

P6201

P6201

P6201

P6201

P6201

P6201

P6201

P6201

P6201

P6201

P6201

P6201

P6201

P6201

P6201

P6201

P6201

P6201

MODE SE

EJECT

L

H

H

H

H

H

H

H