


III. SCHEMATIC DIAGRAMS

SCHEMATIC AND C.B.A. DIAGRAM NOTES

Important safety notice

Components identified by the sign  have special characteristics important for safety. When replacing any of these components, use only the specified parts.

Replacement parts

1. Do not use the part number shown on this drawing for ordering. The correct part number is shown in the parts list, and may be slightly different or amended since this drawing was prepared.
2. To maintain original function and reliability of repaired units, use only original replacement parts which are listed with their part numbers in the parts list section of the service manual.
3. Parts different in shape or size may be used. However, only interchangeable parts will be supplied as service replacement parts.

Test point information

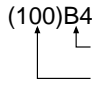
- ① :Test point with a jumper wire across a hole in P.C.B.
- :Test point with a component lead on the foil side.
- ⊗ :Test point with no test pin.
- :Test point with a test pin.

How to read Schematic and C.B.A. Diagrams

1. The Mark "■" indicates leaded component.

Example: ■ R1002

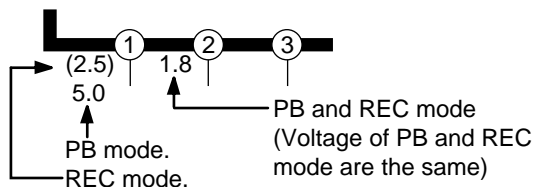
2. How to read converged lines

(100)B4


3. Voltage Measurement

1. Voltage Chart
 - a. Color bar signal in SP mode.
 - b. - - -:Unmeasurable or not necessary to measure.
2. Schematic Diagram
 - a. Audio Section
Monoscope signal in SP REC and PB mode.
 - b. Other Sections
Color bar signal in SP REC and PB mode.

Note: Voltage Indications for the REC and PB modes on the Schematic are as shown below.



4. Indication for Zener Voltage of Zener Diodes

The Zener Voltage of Zener Diodes are indicated as such on Schematic Diagrams.

Example:
 (6.2V).....Zener Voltage

5. How to identify Connectors on Schematic Diagrams

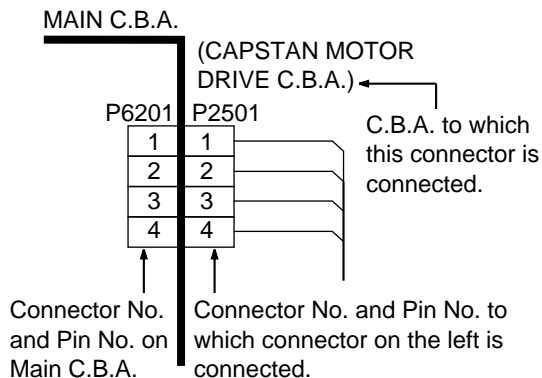
Each connector is labeled with a Connector No. and Pin No. Indicating what it is connected to, in other words, its counter part.

Connections between large P.C.B.s and small circuit boards are illustrated on the large P.C.B. Schematics.

Use the interconnection schematic diagram to find the connection between associated connectors.

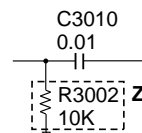
Example:

The connections between C.B.A.s are as shown below.



6. Parts enclosed in dashed lines marked "Z" are not used in any models included in this service manual.

Example:



7. Reference No. on C.B.A. is abbreviated as follows.

Power Supply	1000 series	Hi-Fi Audio	4200 series
Capstan	2500 series	Hi-Fi Head Amp	4400 series
Cylinder		System Control	6000 series
Motor Drive	2600 series	Servo	6200 series
Video	3000 series	Operation	6300 series
Head Amp	3500 series	Demodulator	7000 series
Audio	4000 series	S-VHS	8000 series

Example:

Section	Reference No.	
	Schematic	C.B.A.
Power Supply	R1002	R2
Capstan	R2502	R2
Cylinder		
Motor Drive	R2602	R2

Comparison chart of models & marks used in Schematic and C.B.A. Diagrams

MODEL	MARK	MODEL	MARK
PV-4601 A	A	Not used in any models	Z
PV-4601 B	B		
PV-4601-K	C		
PV-4651	D		
PV-4651	E		

Note : Refer to item 7 for mark "Z".