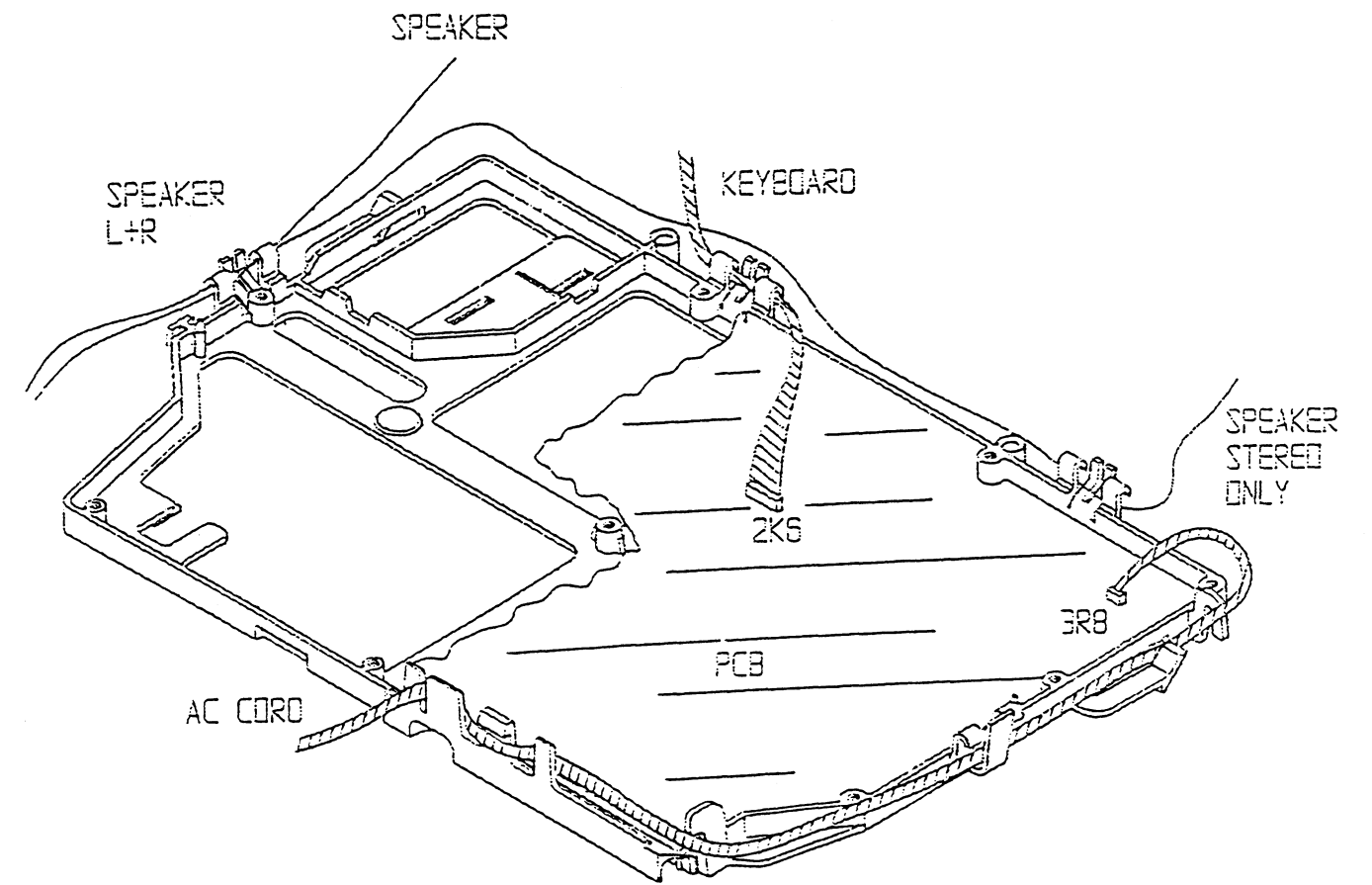
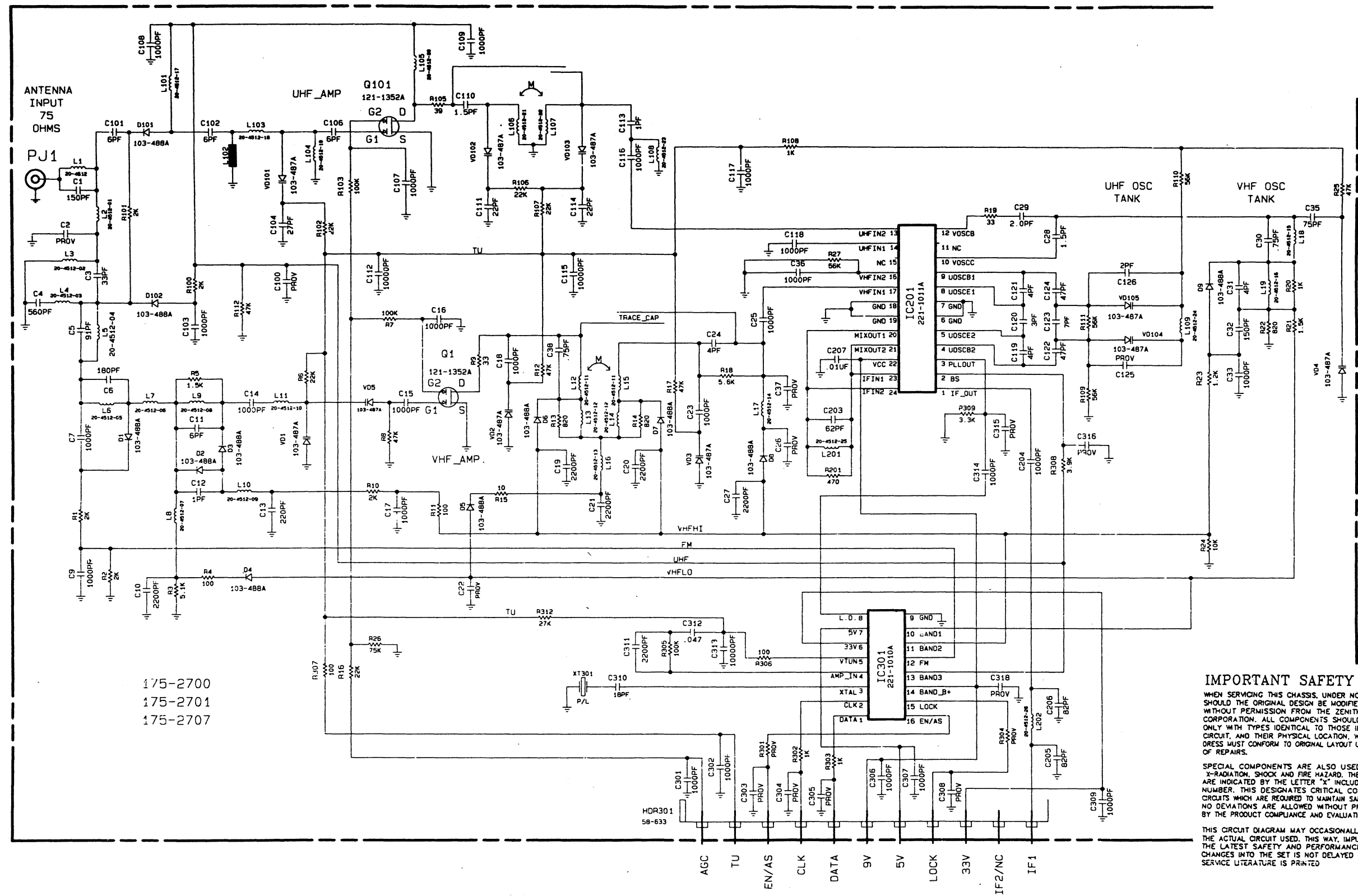


- WIRING DETAILS -





# TUNER 175-2700 / 175-2701 / 175-2707

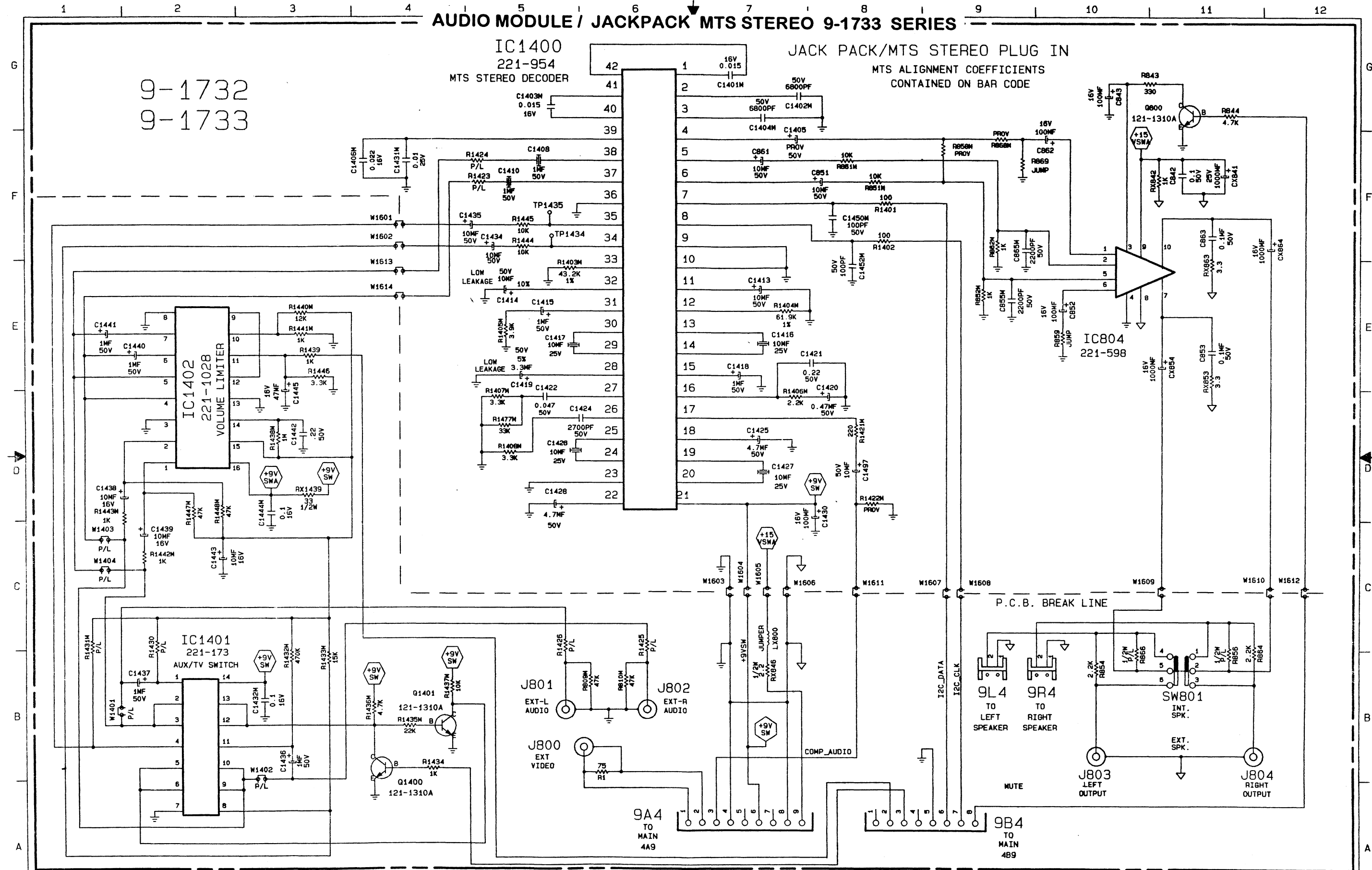


# AUDIO MODULE / JACKPACK MTS STEREO 9-1733 SERIES

9-1732  
9-1733

IC1400  
221-954  
MTS STEREO DECODER

JACK PACK/MTS STEREO PLUG IN  
MTS ALIGNMENT COEFFICIENTS  
CONTAINED ON BAR CODE



IMPORTANT SAFETY NOTE: THE COMPONENTS IDENTIFIED BY THE LETTER X IN ITS COMPONENT DESIGNATOR ARE CRITICAL FOR SAFETY. REPLACE ONLY WITH PART NUMBER SPECIFIED.

ALL SYMBOLS WITH M ON END OF DESIGNATOR INDICATE SURFACE MOUNTED COMPONENT.

NOTE: SEE SHEET 3 FOR STANDARD NOTES.

MUST PASS THE FOLLOWING SPECIFICATIONS

ZENITH 28-307

GROUP

SIZE

CSV

5

DATE

LDF 16SEP96

JOB

3726 C

204-3166

ZENITH ELECTRONICS CORPORATION GLENVIEW, ILL.

SCHEMATIC DESCRIPTION

AGUA JACKPACK MTS STEREO

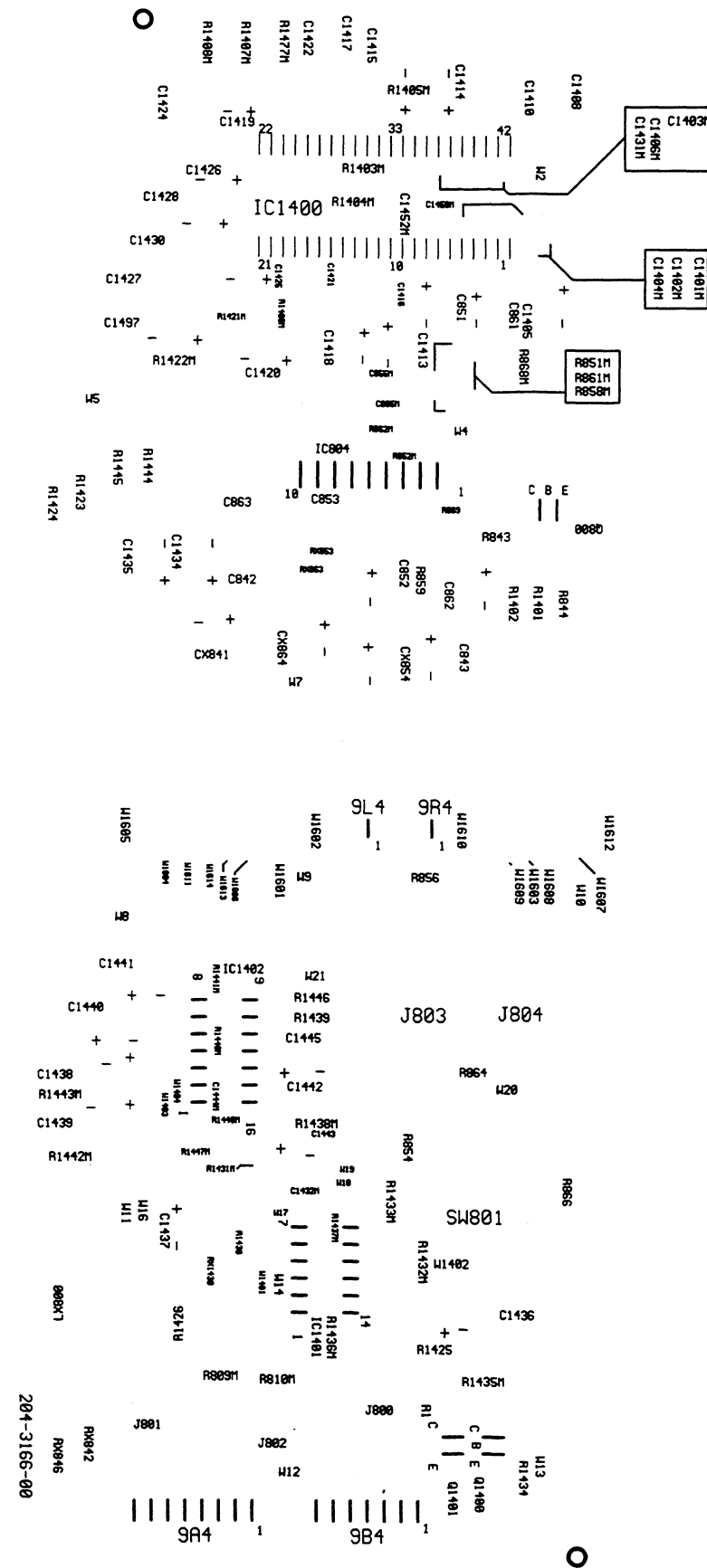
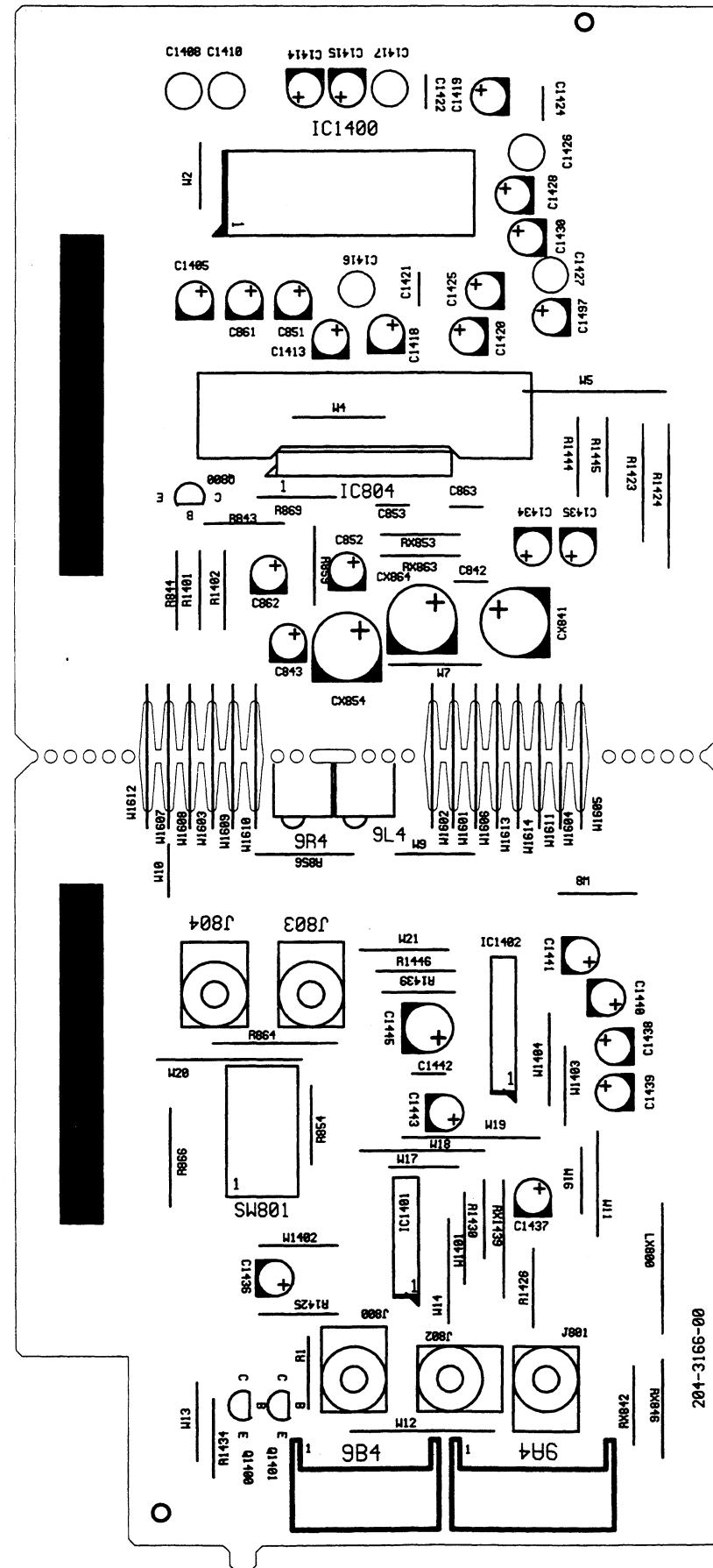
SHEET 4

OR

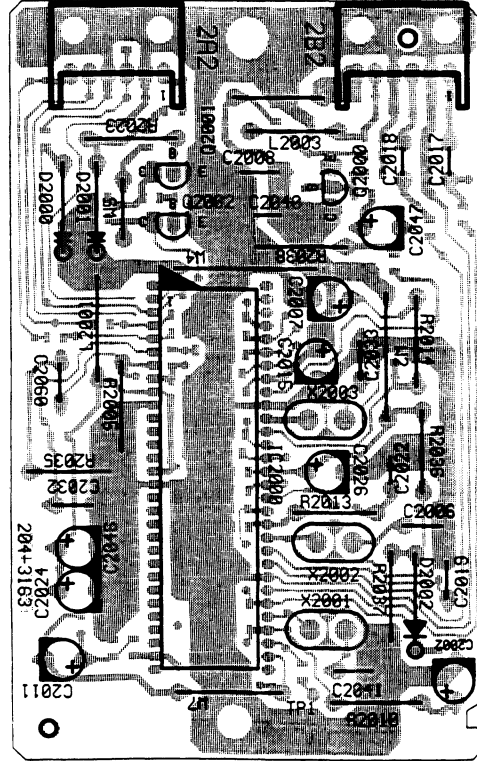
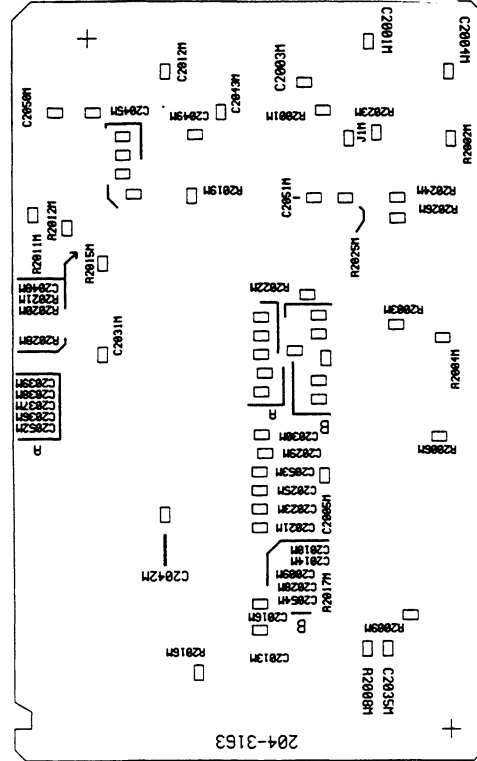
9-1732/1733

# AUDIO MODULE / JACKPACK MTS STEREO 9-1733 SERIES

## COMPONENT & SMD LAYOUT



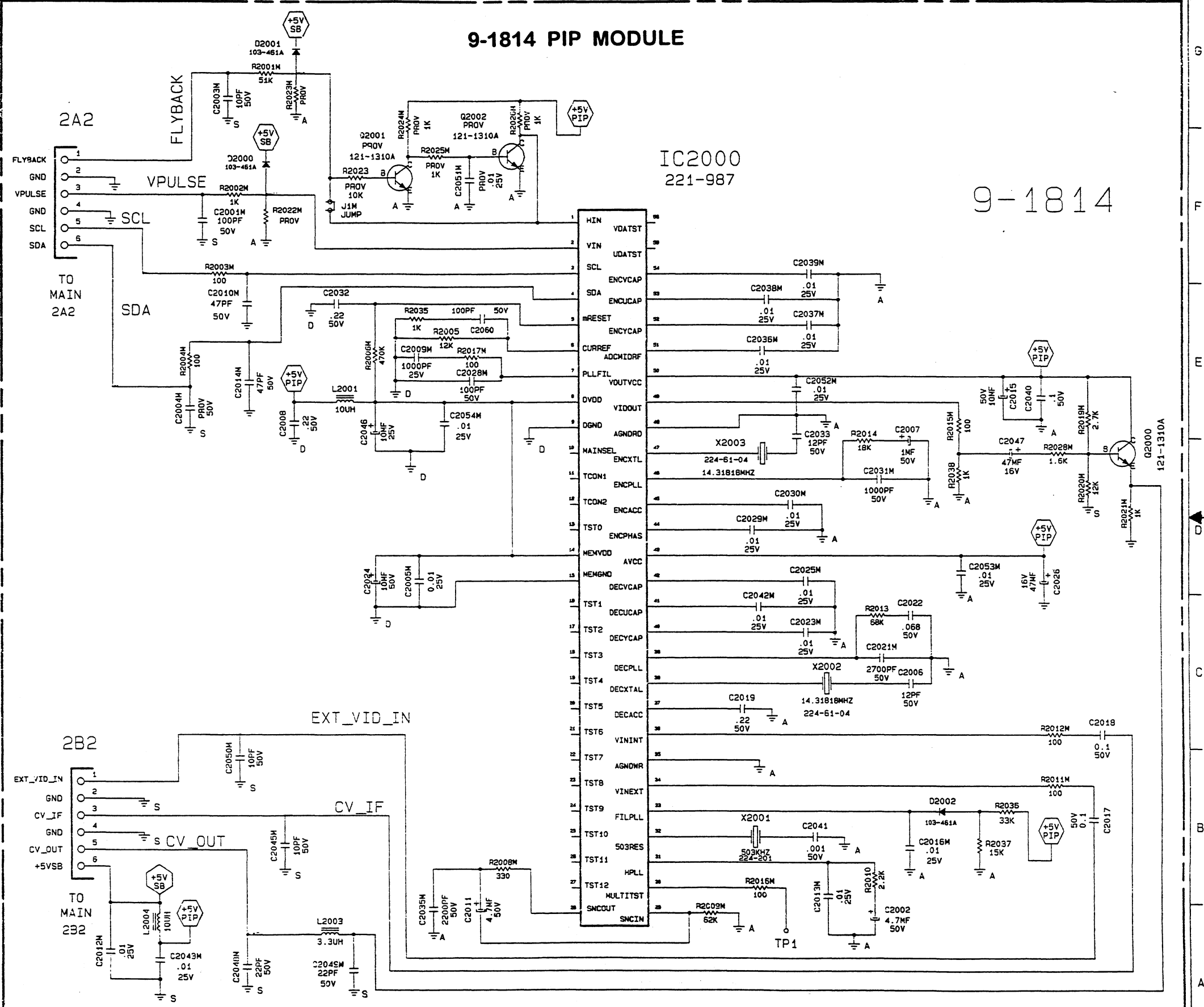
# COMPONENT & SMD LAYOUT



## 9-1814 PIP MODULE

IC2000  
221-987

9-1814



IMPORTANT SAFETY NOTE: THE COMPONENTS IDENTIFIED BY THE LETTER X IN ITS COMPONENT DESIGNATOR ARE CRITICAL FOR SAFETY. REPLACE ONLY WITH PART NUMBER SPECIFIED.

ALL SYMBOLS WITH M ON END OF DESIGNATOR INDICATE SURFACE MOUNTED COMPONENT.

NOTE: SEE SHEET 3 FOR STANDARD NOTES.

MUST PASS THE FOLLOWING SPECIFICATIONS  
ZENITH 28-307

GROUP SIZE  
CSY 5

DATE  
LDF 18NOV96

JOB # 3822A

204-3163

ZENITH  
ELECTRONICS  
CORPORATION  
BLENHEIM, ILL.

SCHEMATIC DESCRIPTION  
GX PIP

SHEET 4

OR

9-1814

# GX MAIN BOARD-SWITCH MODE REGULATOR

## SWITCH MODE REGULATOR

## POWER SUPPLY

- 9-1722..... 19/20V
- 9-1807..... 20V
- 9-1808..... 25V
- 9-1809..... 25V COMB+ PIP
- 9-1810..... 27V
- 9-1811..... 27V COMB+ PIP
- 9-1812..... 32V
- 9-1813..... 35V COMB+ PIP

IMPORTANT SAFETY NOTE: THE COMPONENTS IDENTIFIED BY THE LETTER 'X' IN ITS COMPONENT DESIGNATOR ARE CRITICAL FOR SAFETY. REPLACE ONLY WITH PART NUMBER SPECIFIED.

ALL SYMBOLS WITH M ON END OF DESIGNATOR INDICATE SURFACE MOUNTED COMPONENT.

NOTE: SEE SHEET 3 FOR STANDARD NOTES.

MUST PASS THE FOLLOWING SPECIFICATIONS  
ZENITH 28-307

GROUP SIZE  
CSY 5

DRAWN: LDF 05DEC96

JOB # 3864 A 204-3215-01

ZENITH ELECTRONICS CORPORATION GLENVIEW, ILL.

SCHEMATIC DESCRIPTION

AGUA CONSUMER CHASSIS

SHEET 4 A

9-1812/1813

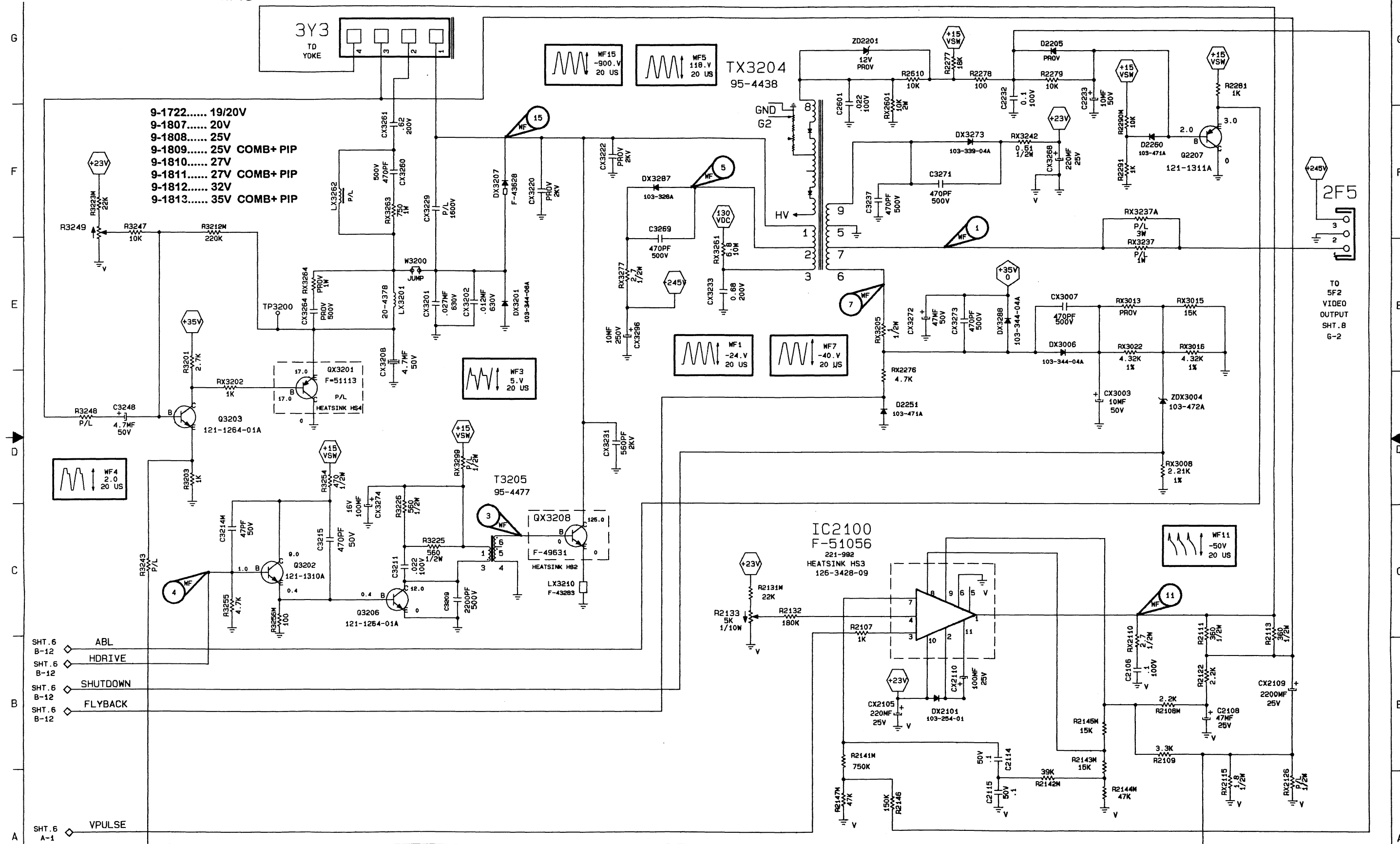




ICX2200  
221-997-01



# GX MAIN BOARD-SWEEP / S.M.P.S



IMPORTANT SAFETY NOTE: THE COMPONENTS IDENTIFIED BY THE LETTER X IN ITS COMPONENT DESIGNATOR ARE CRITICAL FOR SAFETY. REPLACE ONLY WITH PART NUMBER SPECIFIED.

ALL SYMBOLS WITH M ON END OF DESIGNATOR INDICATE SURFACE MOUNTED COMPONENT.

NOTE: SEE SHEET 3 FOR STANDARD NOTES.

MUST PASS THE FOLLOWING SPECIFICATIONS  
ZENITH 28-307

GROUP SIZE  
CSV 5

DATE: LDF 05DEC96

JOB # 3864 C 204-3215-01

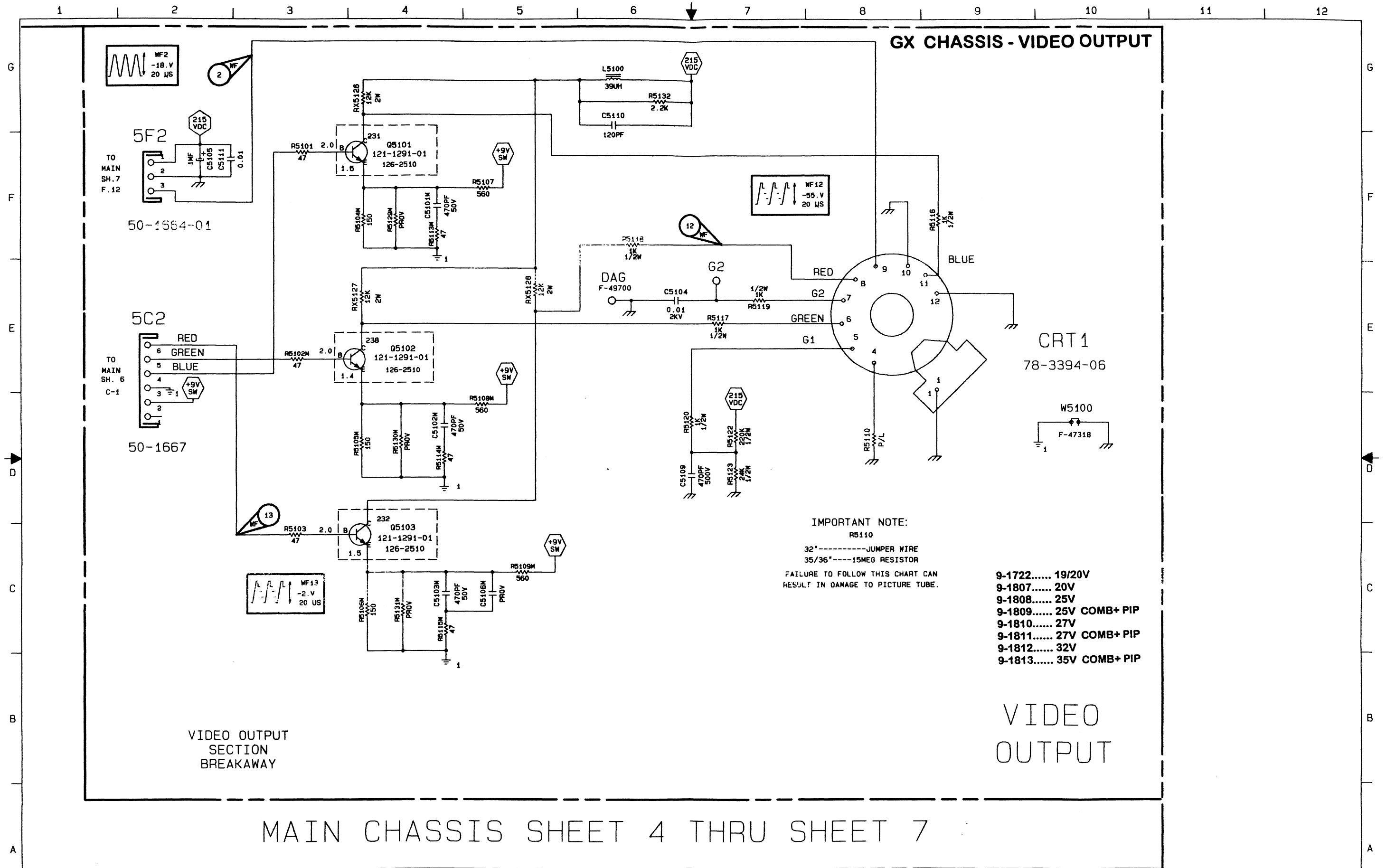
ZENITH  
ELECTRONICS  
CORPORATION  
GLENVIEW, ILL.

SCHEMATIC DESCRIPTION  
AGUA CONSUMER CHASSIS

SHEET 7

ISSUE  
A

9-1812/1813



IMPORTANT SAFETY NOTE: THE COMPONENTS IDENTIFIED BY THE LETTER X IN ITS COMPONENT DESIGNATOR ARE CRITICAL FOR SAFETY. REPLACE ONLY WITH PART NUMBER SPECIFIED.

ALL SYMBOLS WITH M ON END OF DESIGNATOR INDICATE SURFACE MOUNTED COMPONENT.

NOTE: SEE SHEET 3 FOR STANDARD NOTES.

MUST PASS THE FOLLOWING SPECIFICATIONS  
 ZENITH 28-307

GROUP SIZE  
 CSY 5

DATE  
 LDF 10DEC96

JOB # 3864V0 204-3215-01

ZENITH  
 ELECTRONICS  
 CORPORATION  
 GLENVIEW, ILL.

SCHEMATIC DESCRIPTION  
 AGUA CONSUMER CHASSIS

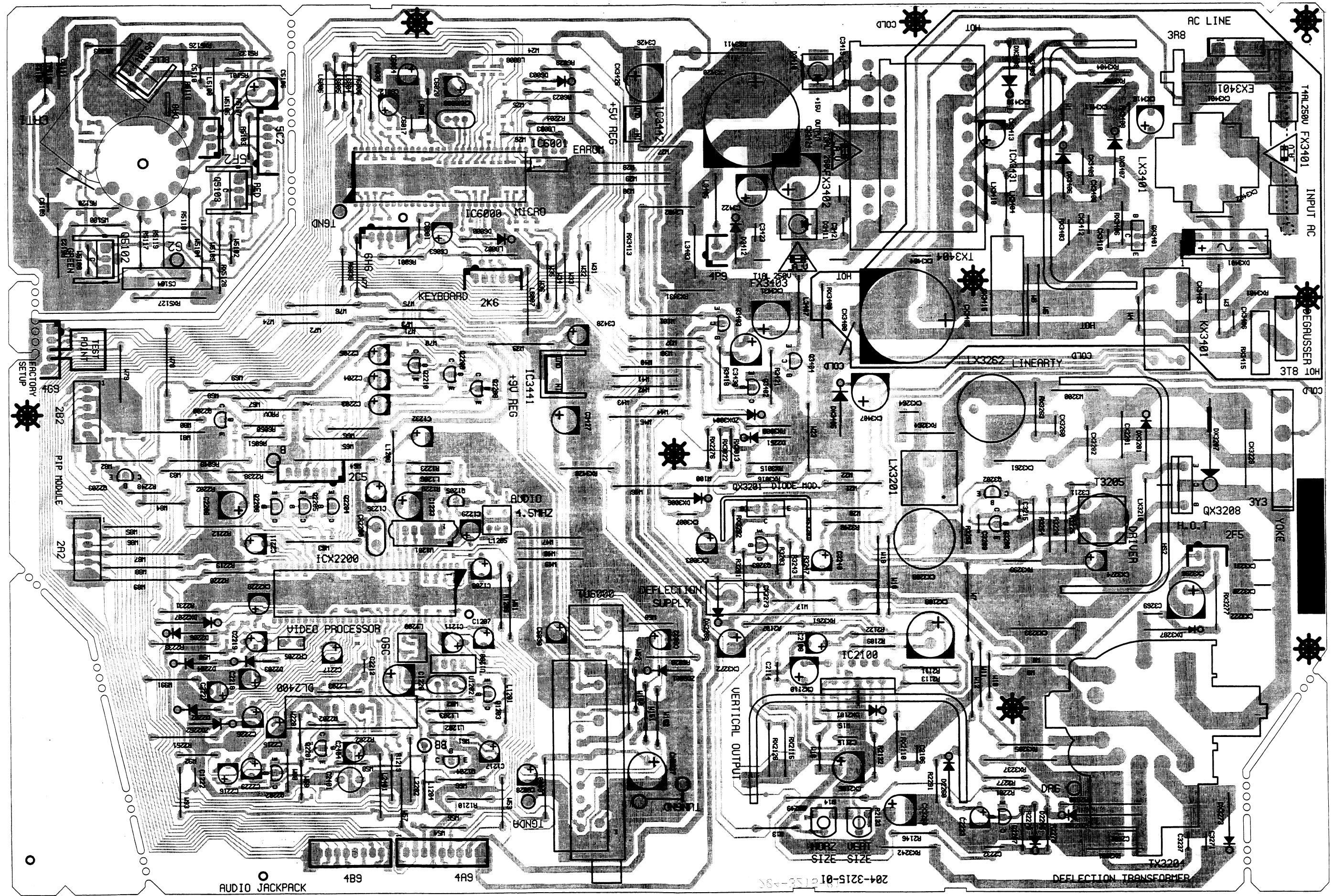
SHEET 8

ISSUE  
 A

9-1812/1813

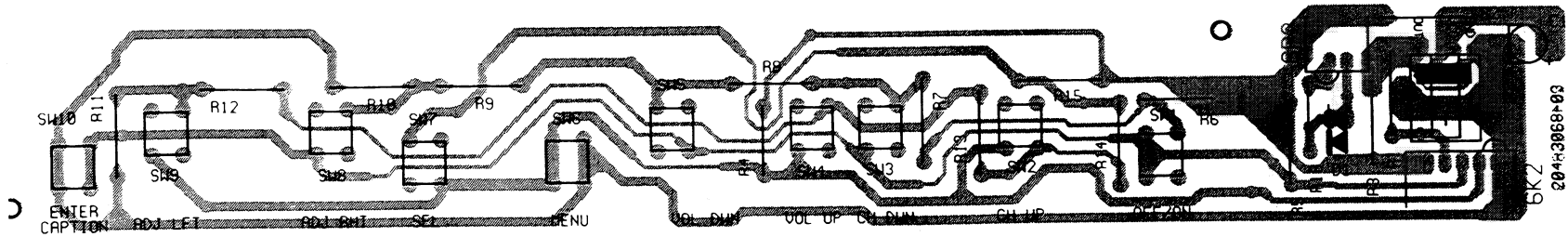
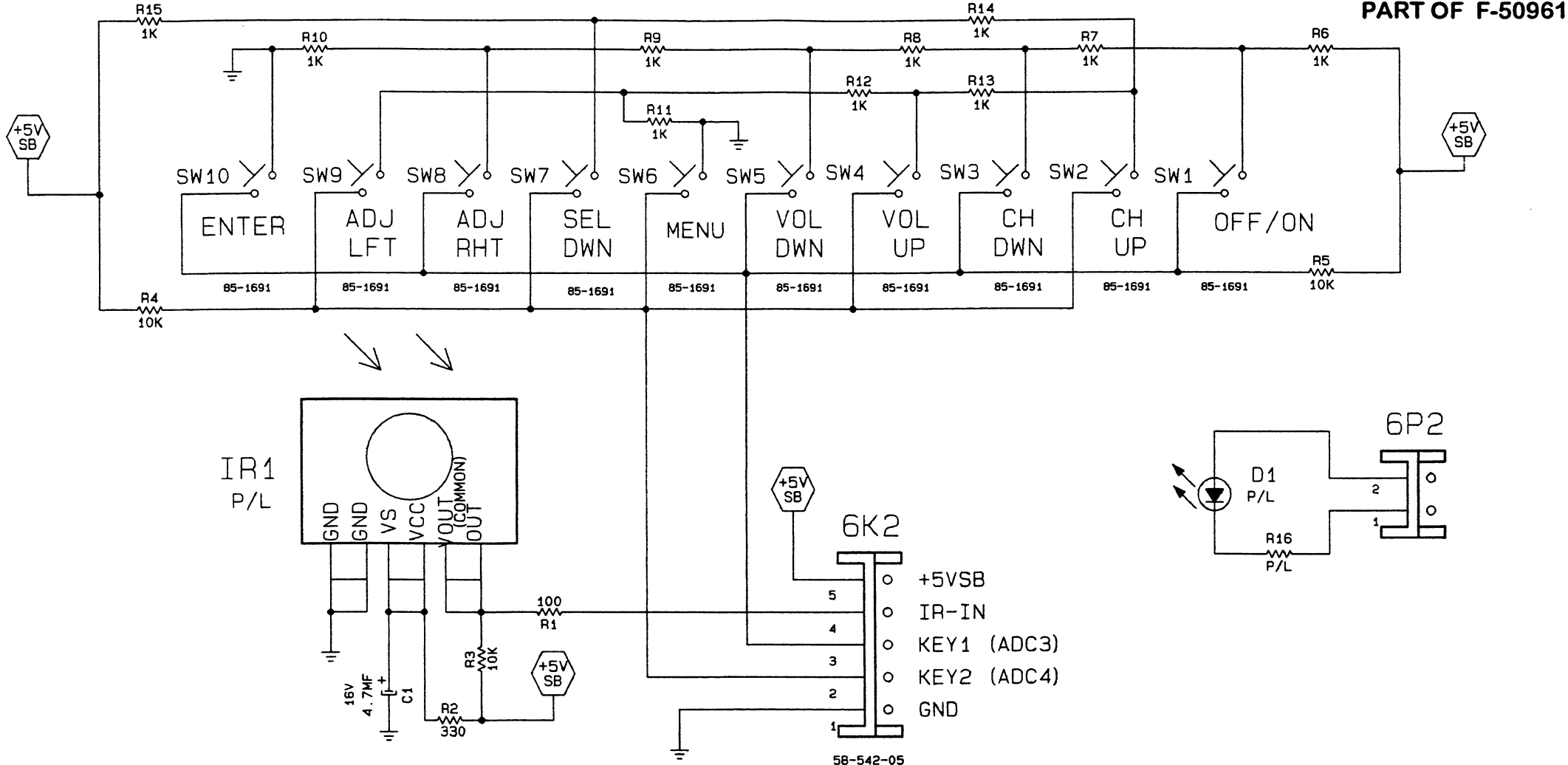


# MAIN MODULE COMPONENT LAYOUT

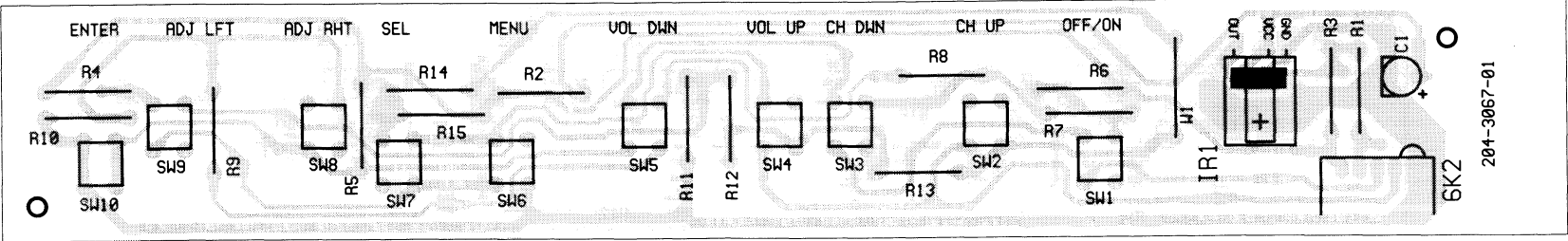
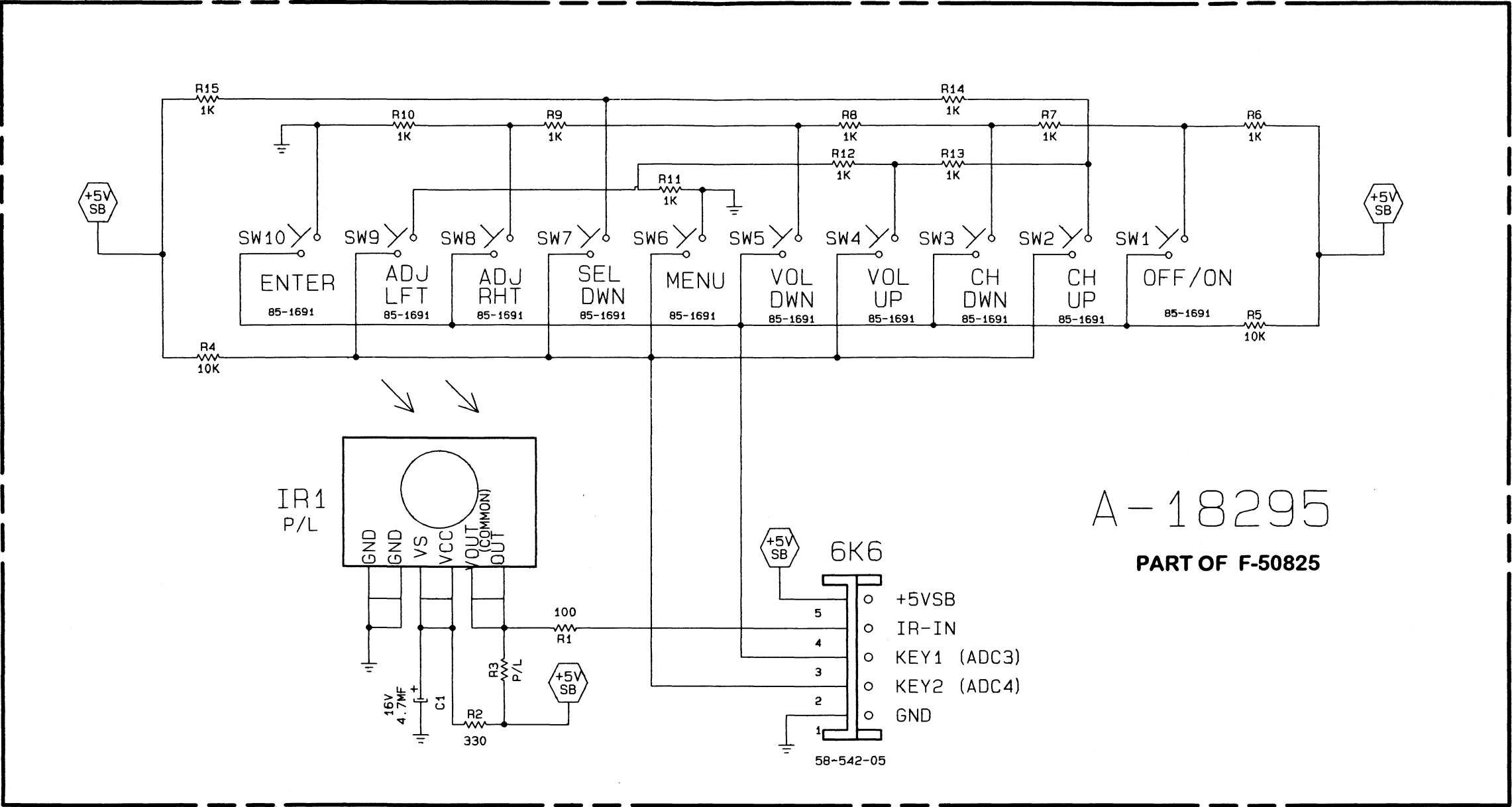


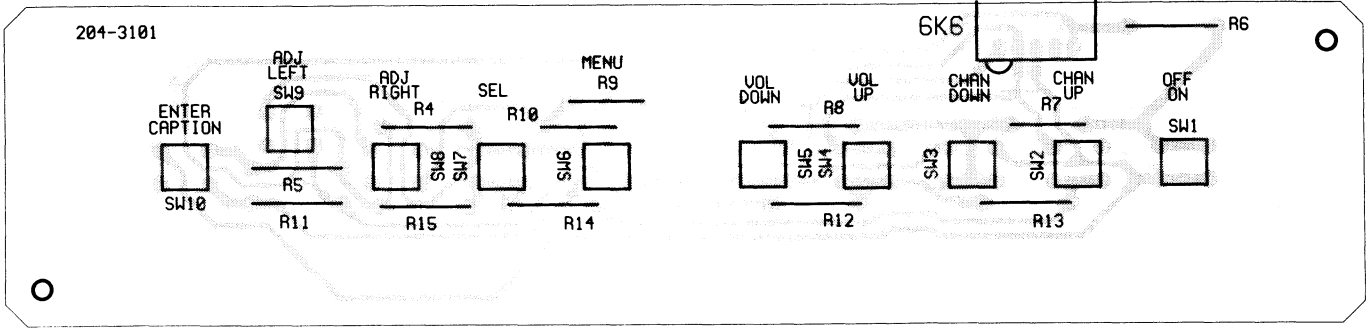
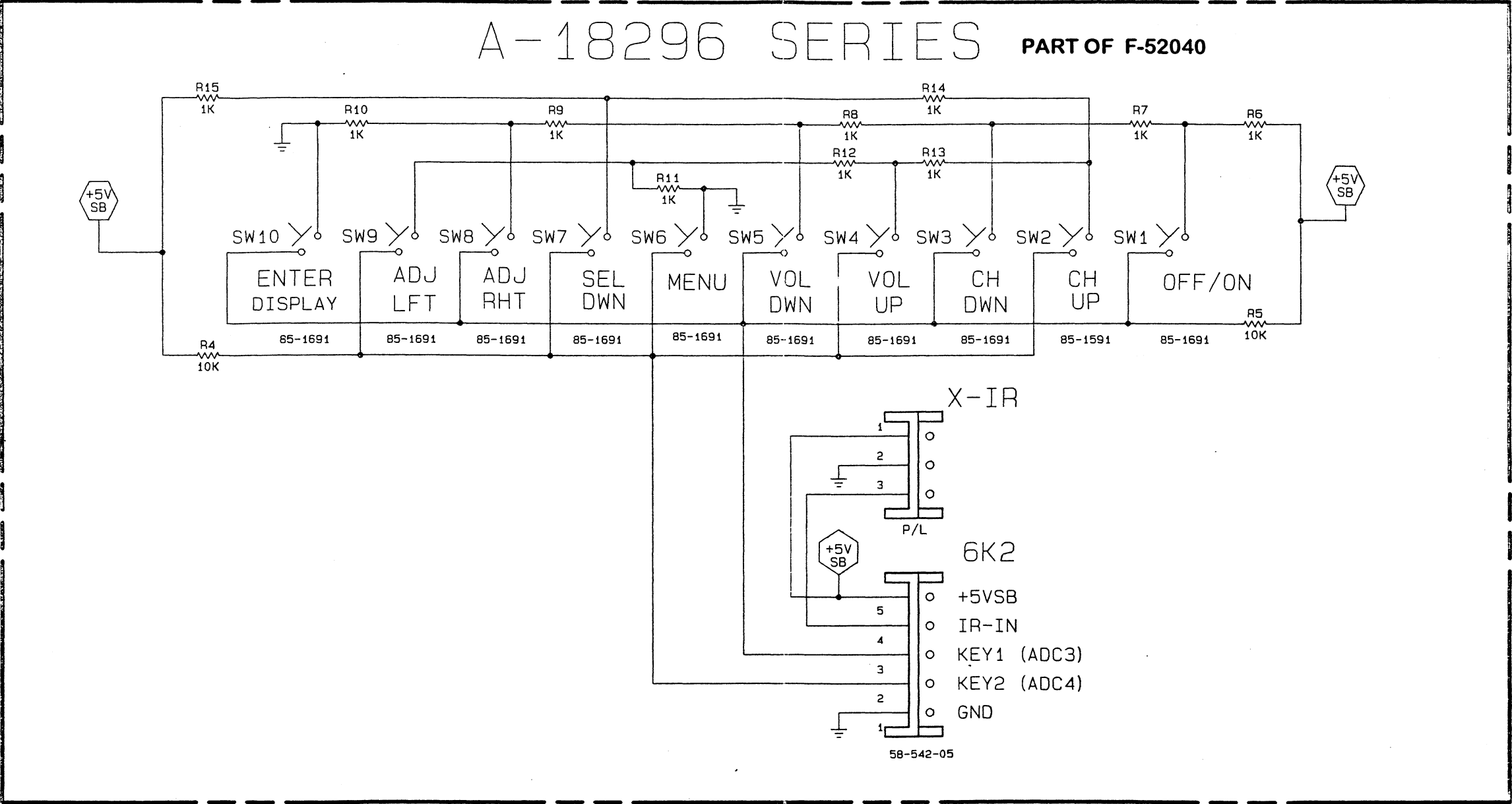


# A-18225, A-18232 & A-18282 SERIES



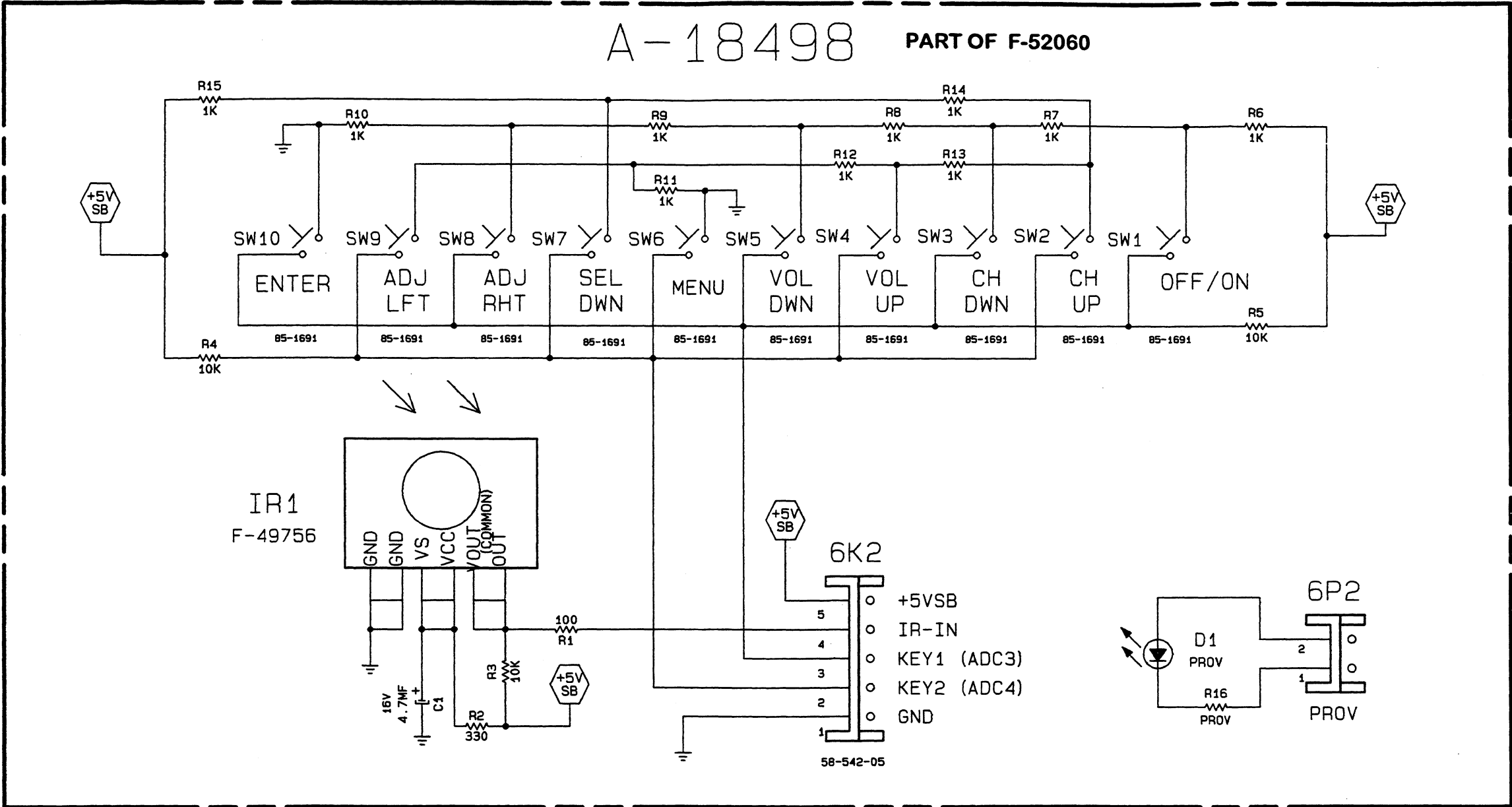
KEYBOARD SCHEMATIC & COMPONENT LAYOUT, REFER TO MODEL PARTS LIST.



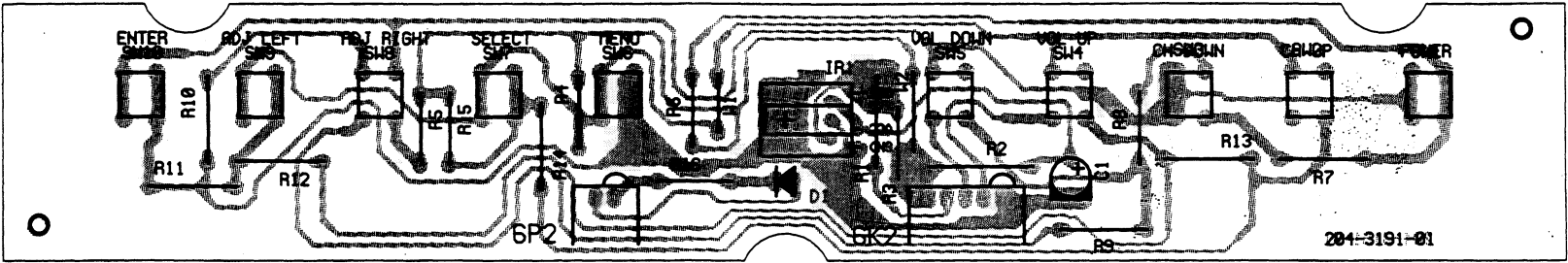




KEYBOARD SCHEMATIC & COMPONENT LAYOUT, REFER TO MODEL PARTS LIST.

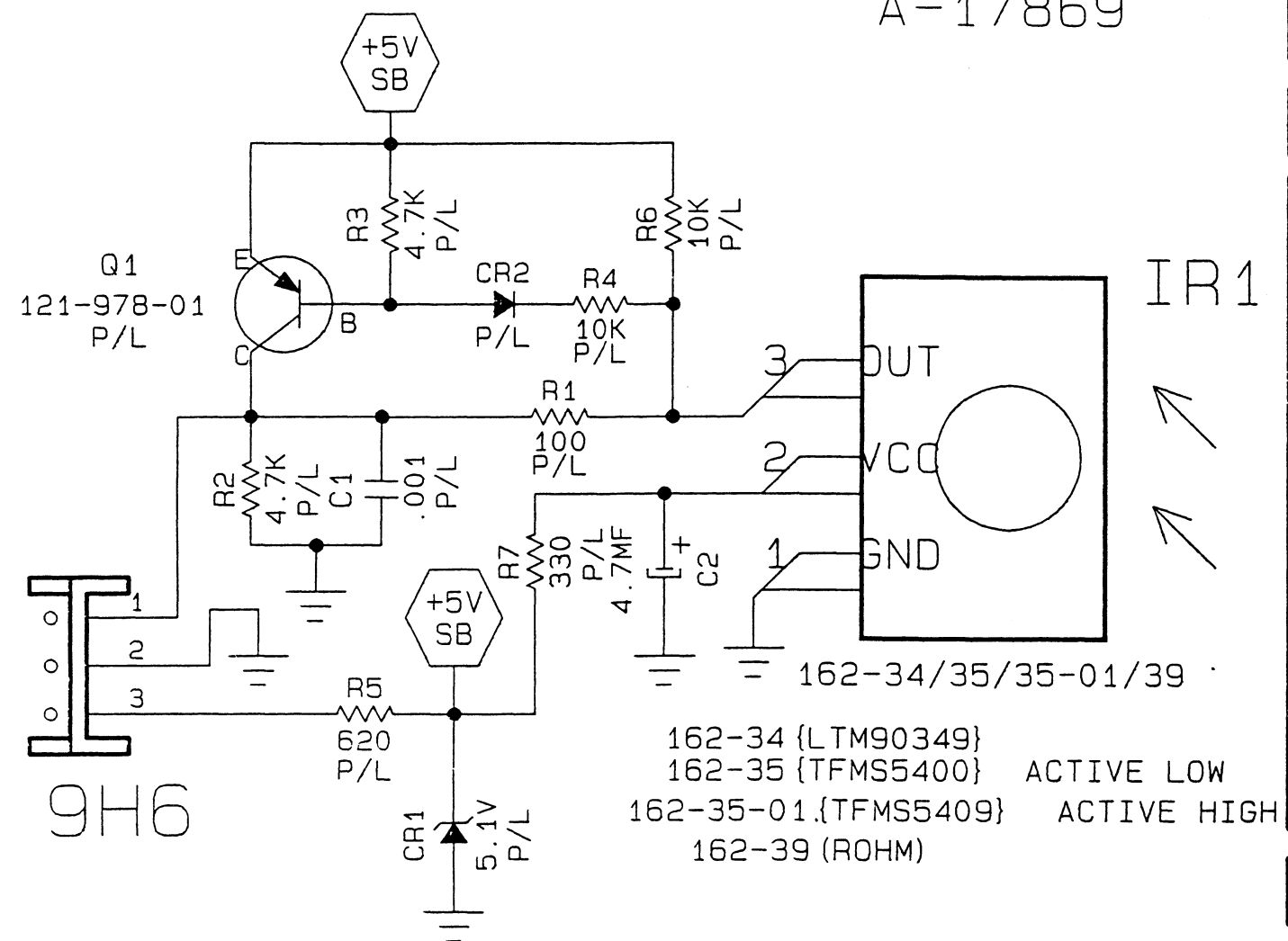


SYMMETRICAL STYLE WITH IR & POWER LED



# A-17869 DETECTOR AMP

A-17869



204-2759-04

A-17869

NO INVERTER +5V TELEFUNKEN