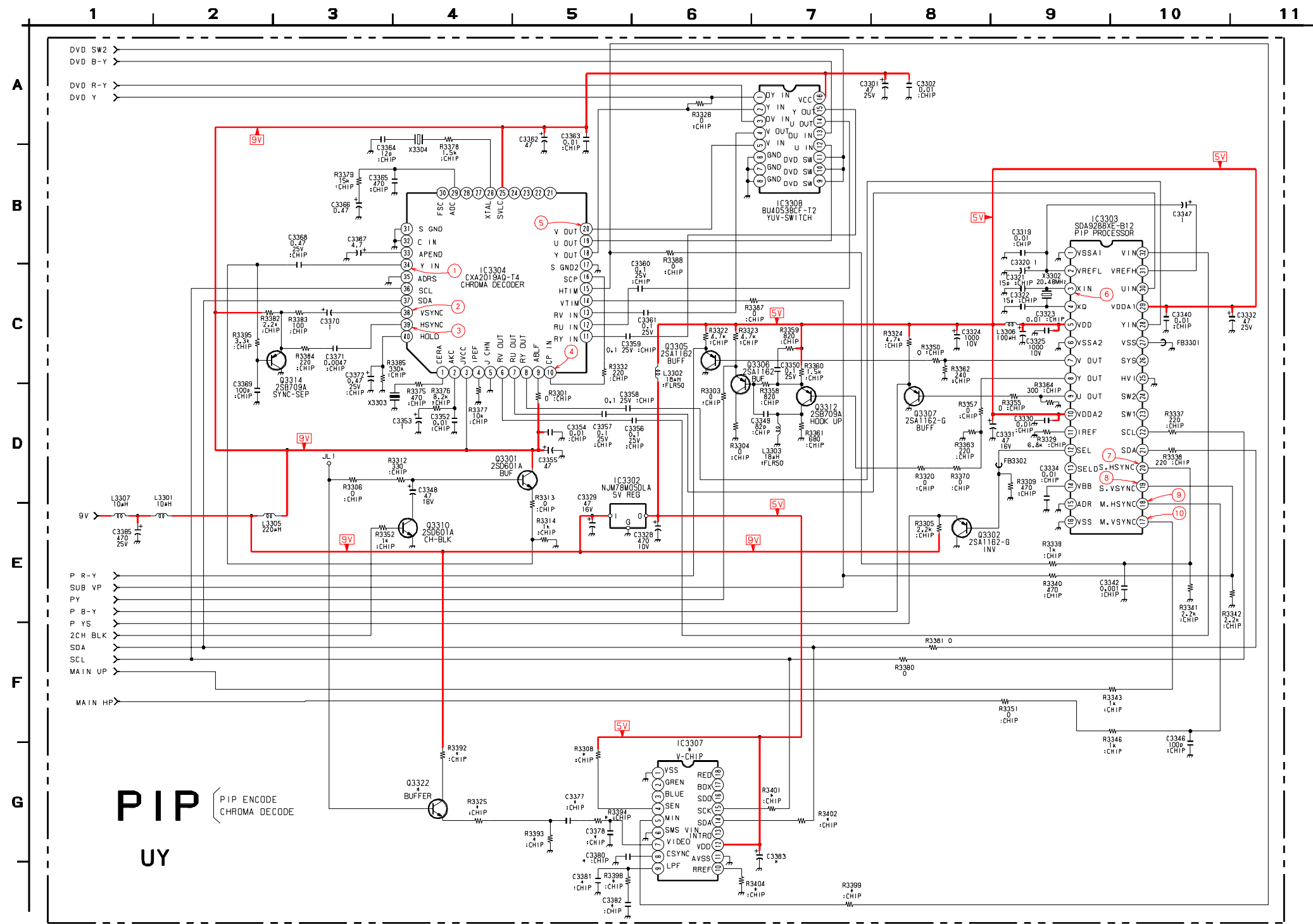
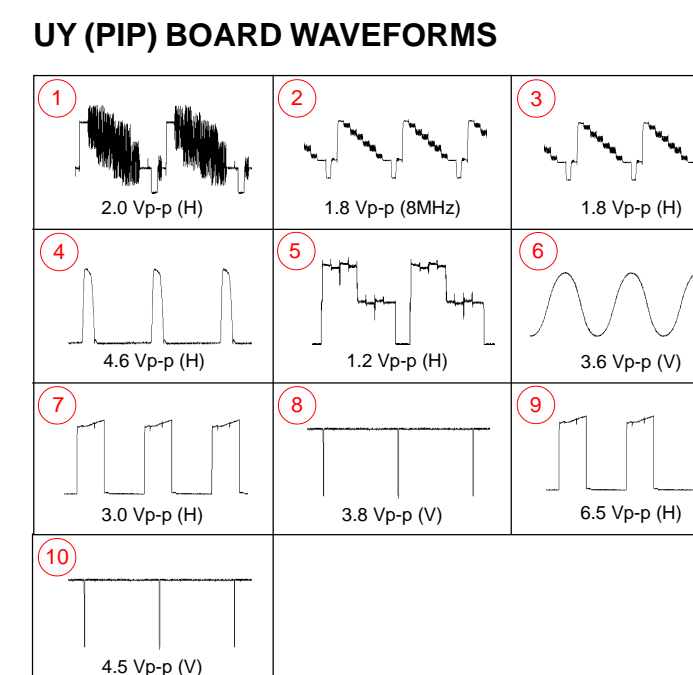


KV-32FS10/32FV15/32XBR250/34FV10/34FV15/34FV15C/34FX250C/34FV15K
34FV15T/36FS10/36FV15/36XBR250/38FX250/38FX250C/38FX250T/38FV15K

UY PIP BOARD SCHEMATIC DIAGRAM



UY (PIP) BOARD (*) MARK LIST		
REF. NO.	LOCATION	MARK LIST
C3377	G-5	0.1
C3378	G-5	560p
C3380	G-5	0.1
C3381	G-5	0.0068
C3382	G-6	0.0068
C3383	G-7	0.1
C3307	G-6	Z86130112SSC
Q3322	G-4	2SD601A-Q
R3308	F-5	0
R3325	G-4	100
R3392	F-4	0
R3393	G-5	100
R3394	G-5	470
R3398	G-5	6.8K
R3399	G-7	100
R3401	G-7	100
R3402	G-7	100
R3404	G-8	10K

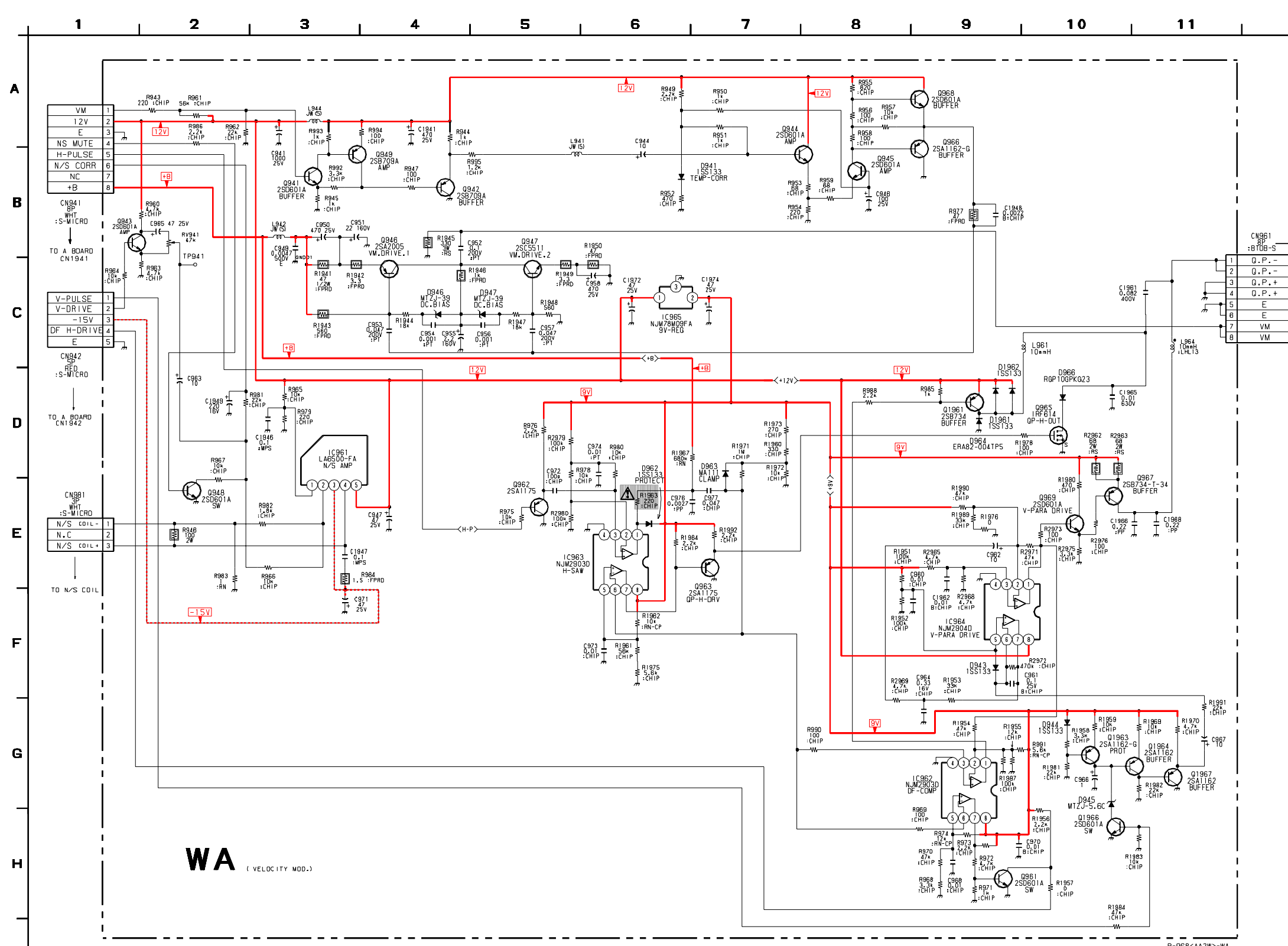


UY (PIP) BOARD IC VOLTAGE LIST									
IC3302		18	0.2	8	2.9	14	1.4	38	3.8
pin	volt	19	0.1	9	8.7	15	NC	39	3.1
IN	8.9	20	0.4	10	0.7	16	40	1.1	1.4
OUT	5.1	21	4.5	11	4.0	17	GND	IC3307	volt
GND	GND	22	4.5	12	4.2	18	3.4	pin	volt
IC3303		23	NC	13	4.3	19	2.8	1	GND
pin	volt	24	NC	14	0.1	20	2.8	2	NC
1	GND	25	GND	15	0.7	21	NC	3	NC
2	3.0	26	NC	16	0.7	22	NC	4	5.1
3	2.3	27	0	23	NC	5	0.7	5	0.7
4	2.0	28	2.0	pin	volt	24	NC	6	GND
5	4.8	29	5.0	1	5.1	25	8.7	7	1.2
6	GND	30	2.3	2	NC	26	2.4	8	0
7	0.1	31	4.0	3	GND	27	NC	9	1.5
8	0	32	2.3	4	GND	28	NC	10	1.1
9	0.1	33	5.0	5	0.7	29	4.3	11	GND
10	5.0	pin	volt	6	NC	30	NC	12	5.1
11	1.9	1	2.2	7	NC	31	GND	13	NC
12	0	2	4.0	8	GND	32	GND	14	4.5
13	NC	3	5.7	9	5.1	33	3.8	15	4.5
14	-2.9	4	1.7	10	GND	34	4.4	16	NC
15	GND	5	GND	11	3	35	GND	17	NC
16	GND	6	2.8	12	3	36	4.6	18	NC
17	5.1	7	2.8	13	NC	37	4.5		

UY (PIP) BOARD TRANSISTOR VOLTAGE LIST				
Q3301	5.2	8.6	4.5	
Q3302	0	0	0.7	
Q3305	0	0	0.7	
Q3306	0.6	0	1.2	
Q3307	0.1	0	0.7	
Q3310	0	4.9	GND	
Q3312	0	0	0.6	
Q3314	4.6	0	5.2	
Q3322	5.2	6.1	6.6	

All voltages are in V

WA BOARD SCHEMATIC DIAGRAM



WA BOARD IC VOLTAGE LIST									
IC961		1	9.7	1	2.1	1	7.4	pin	volt
pin	volt	2	5.2	2	4.2	2	4.4	IN	11.8
1	0.2	3	6.6	3	4.6	3	4.4	OUT	8.9
2	0.3	4	GND	4	GND	4	GND	GND	GND
3	-13.0	5	6.9	5	7.5	5	4.4		
4	4.6	6	6.6	6	6.7	6	4.4		
5	11.8	7	3.5	7	6.1	7	4.4		
		8	8.9	8	8.9	8	11.8		

All voltages are in V

WA BOARD TRANSISTOR VOLTAGE LIST				
Q943	3.5	8.3	2.9	
Q944	2.6	11.9	1.9	
Q945	2.6	8.0	1.9	
Q946	134.0	67.5	134.6	
Q947	0.9	67.5	0.3	
Q948	0	1.7	GND	
Q961	0.4	0.3	GND	
Q962	0.4	GND	1.1	
Q963	6.1	GND	6.2	
Q966	8.0	GND	8.4	
Q967	6.8	0.4	7.4	
Q969	8.8	11.9	8.4	
Q969	7.4	8.0	6.8	
Q1961	11.7	2.4	11.8	
Q1963	7.2	6.4	7.8	
Q1964	6.4	4.2	7.0	
Q1966	-2.0	3.5	GND	
Q1967	4.2	GND	4.8	

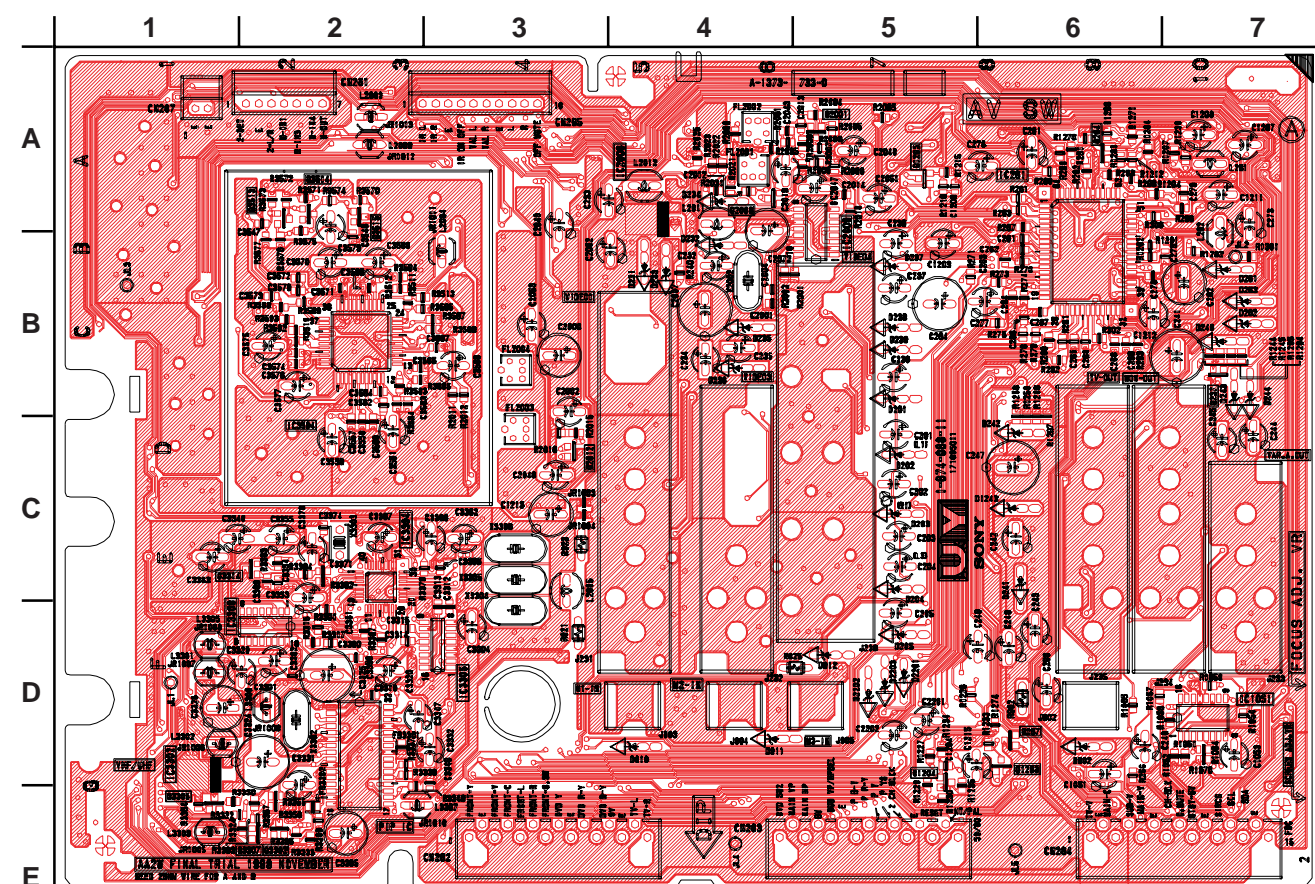
All voltages are in V

WA BOARD TRANSISTOR VOLTAGE LIST		
Q965	4.9	6.2
		GND

All voltages are in V

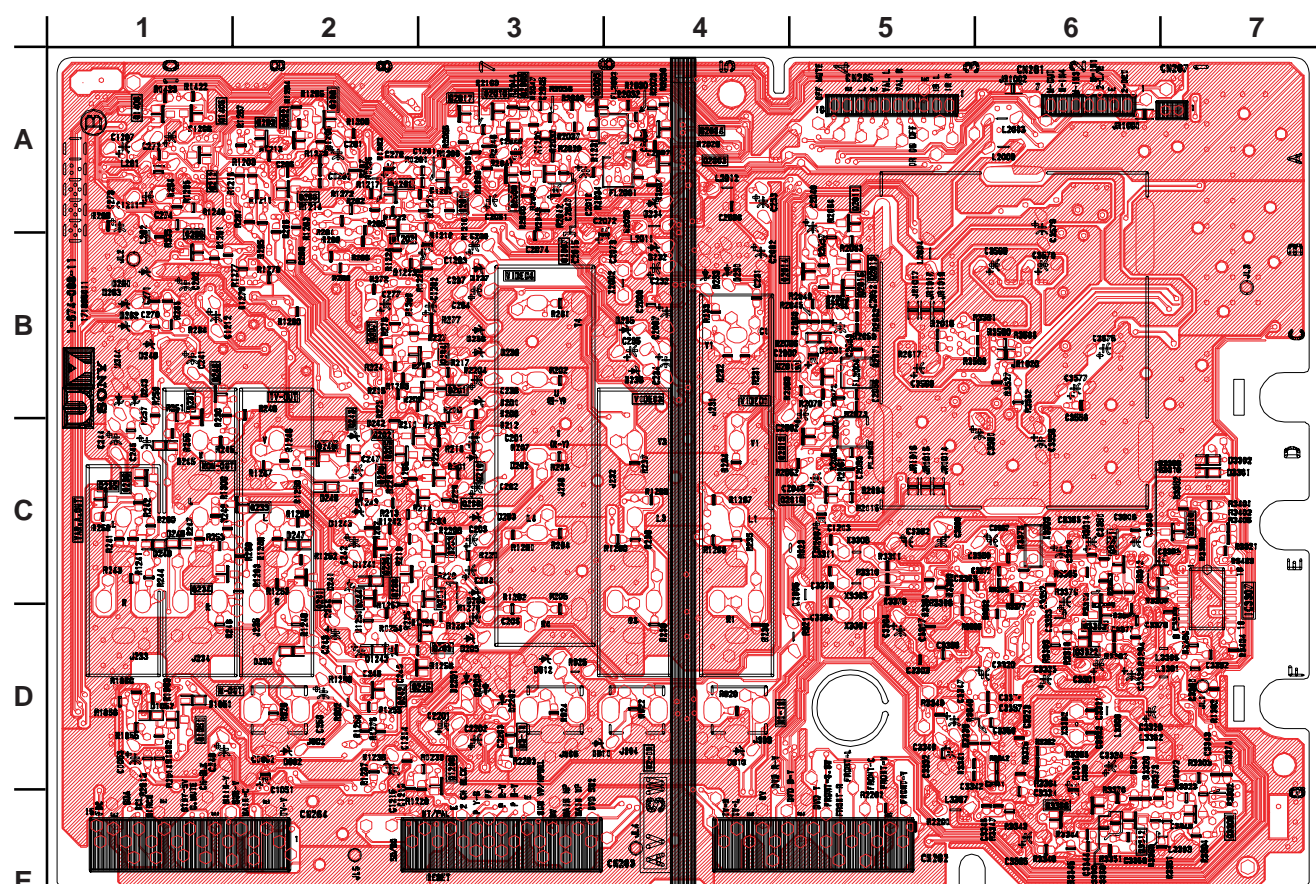
UY [3D LINE, COMB FILTER, AV SW, AUDIO CONTROL, SRS]

[COMPONENT SIDE]



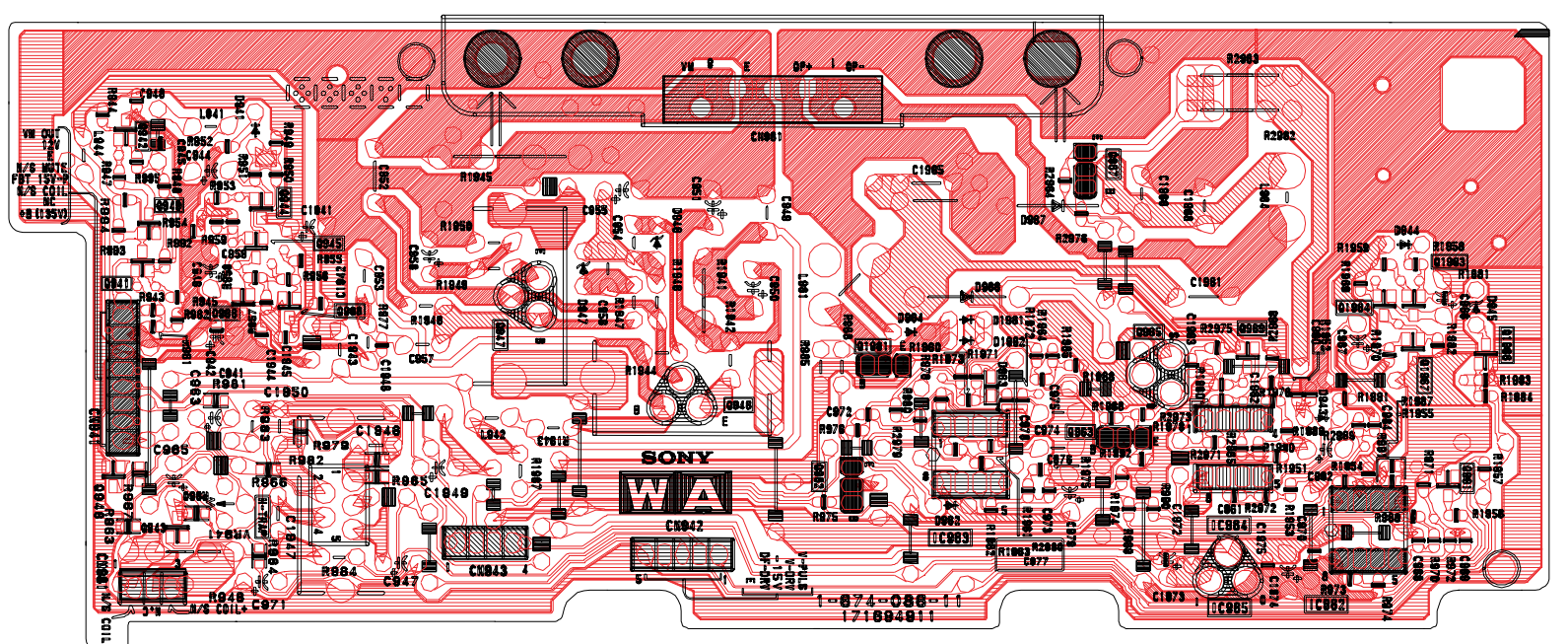
Schematic diagrams
← UY main board
UY PIP WA boards →

[CONDUCTOR SIDE]



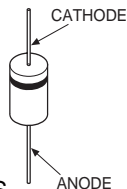
DIODE		IC		A		B	
D231	B-4	IC261	A-6	Q1051	A	D-1	
D232	B-4	IC1051	D-7	Q1202	B	A-2	
D233	B-4	IC2006	A-4	Q1203	D-6	B-2	
D234	A-4	IC3302	D-1	Q1204	D-5		
D235	B-4	IC3303	D-2	Q1205		A-5	
D236	B-4	IC3304	C-3	Q1206		D-3	
D237	B-5	IC3305	D-3	Q2003	D-5		
D238	B-5	IC3307		Q2004		A-4	
D239	B-5	IC3504	B-2	Q2005	A-5		
D245		TRANSISTOR		Q2006	A-4		
D246	C-1	Q212	A-1	Q2007	B-3		
D247	C-2	Q231		Q2008	A-3		
D248	D-2	Q232	C-1	Q2009	A-3		
D250	D-2	Q234	C-1	Q2010	A-3		
D261	B-7	Q235	C-1	Q2014	B-5		
D262	D-6	Q236	C-1	Q2018	C-5		
D263	D-4	Q237	B-7	Q2019	C-5		
D264	D-4	Q238	C-2	Q3301	C-6		
D1051		Q239	C-2	Q3302	E-2		
D1052	D-1	Q240	B-1	Q3305	E-1		
D2201	D-5	Q245	A-2	Q3306	E-6		
D2202	D-5	Q263	A-2	Q3307	E-2		
D2203	D-5	Q264	A-9	Q3310		C-7	
		Q265	A-2	Q3312		E-6	
		Q266	B-1	Q3314	C-1		
		Q267	D-6	Q3322		D-6	

WA [VELOCITY MOD., QUAD POLE ROT.]

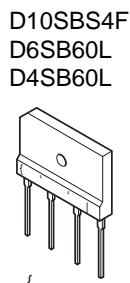
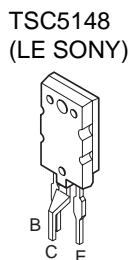
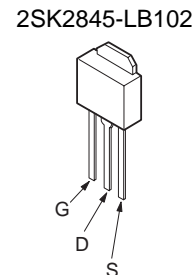
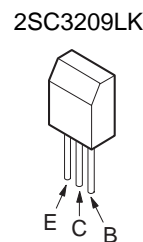
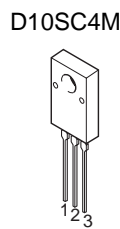
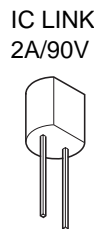
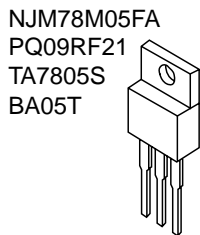
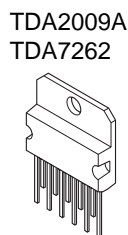
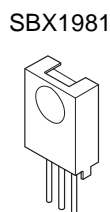
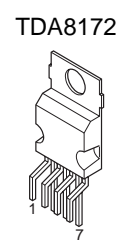
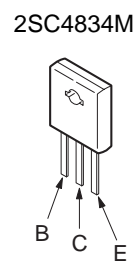
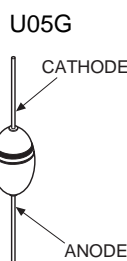
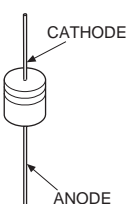


6-8. SEMICONDUCTORS

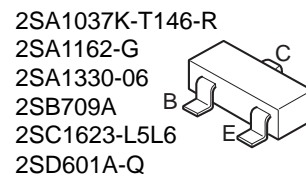
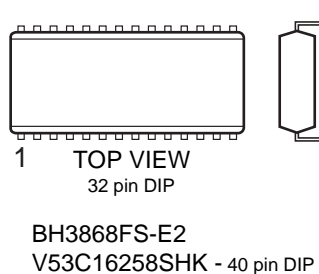
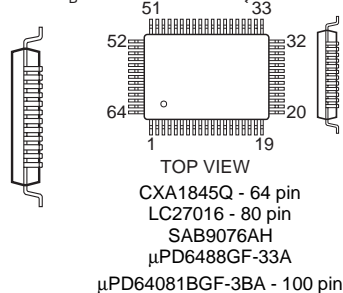
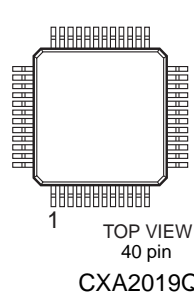
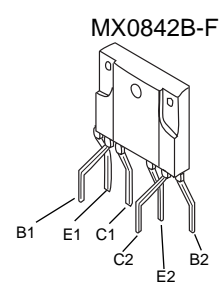
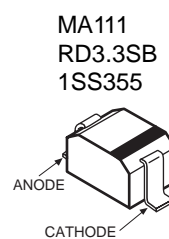
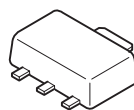
D1NL20U
D2L20U
EL1Z
EGP20G
EGP30G
ERA22-08
ERC06-15S
ERD29-08J
EZ0150AV1
GP08D
MTZJ-33A
1SS83



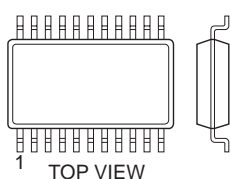
D1NS4
MTZJ-XXA
MTZJ-XXB
MTZJ-XXC
RDXXESB1
RDXXESB2
RDXXESB3
1SS119-25
1SS133T-77
(XX = VALUE)



S-80748AL



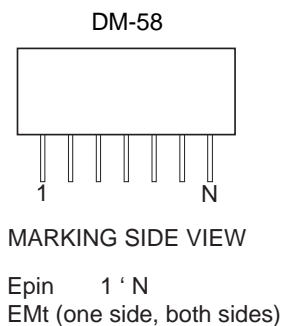
8 pin SOP
NJM2903D
NJM2903M
NJM2904D
ST24C02FM6TR
μPC4558G2
X24C04SB



20 pin SOP
NJM2150M

16 pin SOP
BU4053BCF-T2
CXA1315M
MC14052BF
MC14538B
NJM2145M-TE2
CXD2064Q-T6

24 pin SOP
CXA2039M-T6
28 pin SOP
MN47V76ST1
MN47V77ST1
36 pin SOP
μPC1862GS-E2



14 pin DIP
NJM2902M
16 pin DIP
MM1093N
20 pin DIP
TA1226N
22 pin DIP
CXA2021S
28 pin DIP
TDA7467
30 pin DIP
CXD2073S

40 pin DIP
SDA9288XE
42 pin DIP
MM1311AD
MM1313AD
48 pin DIP
CXA2131S
64 pin DIP
CXP85856A-029S

SECTION 7 EXPLODED VIEW

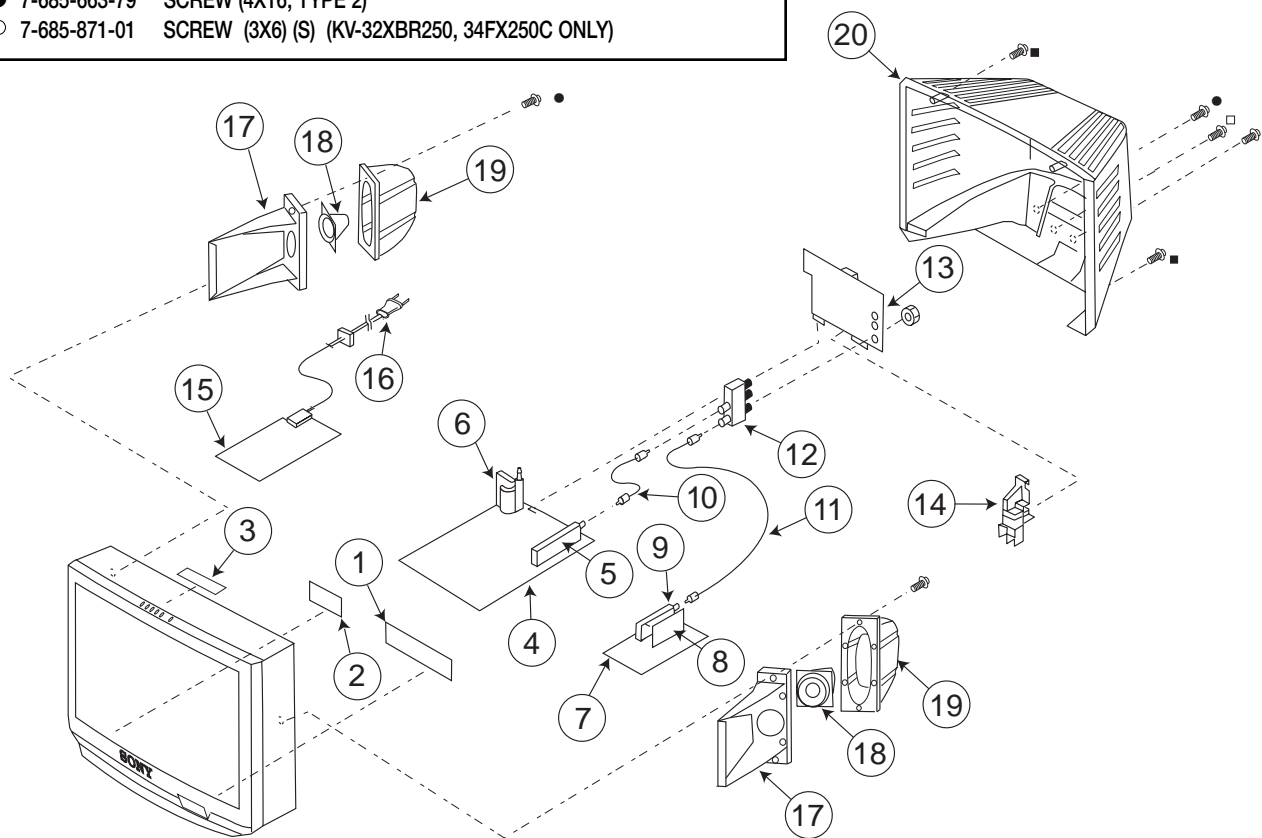
- Items with no part number and no description are not stocked because they are seldom required for routine service.
- The component parts of an assembly are indicated by the reference numbers in the remarks column.
- Items marked with an asterisk " * " are not stocked since they are seldom required for routine service. Some delay should be anticipated when ordering these items.

The components identified by shading and "△" are critical for safety. Replace only with specified part number.

Les composants identifiés par un trame et une marque △ sont critiques pour la sécurité. Ne les remplacer que par une pièce portant le numéro spécifié.

7-1. CHASSIS (KV-32FS10/32FV15/32FV15C/32XBR250/34FV10/34FV15/34FV15K/34FV15T/34FX250C)

■ 7-682-566-04	SCREW (M4X20), TAPPING, (+-)(BV) (KV-32FS10, 34FV10 EXCLUDED)
□ 7-685-648-79	SCREW (3X12, TYPE 2)
● 7-685-663-79	SCREW (4X16, TYPE 2)
○ 7-685-871-01	SCREW (3X6) (S) (KV-32XBR250, 34FX250C ONLY)



REF.NO.	PART NO.	DESCRIPTION	REMARK	REF.NO.	PART NO.	DESCRIPTION	REMARK
1	* A-1372-634-A	HA BOARD, COMPLETE		5	△ 8-598-477-00	TUNER, FSS BTF-WG411 (KV-34FV15T Only)	
2	* A-1372-635-A	HB BOARD, COMPLETE		6	△ 1-453-286-11	FBT ASSY, NX4600//X4C4	
3	* A-1372-636-A	HX BOARD, COMPLETE		7	* A-1298-956-A	AK BOARD, COMPLETE (KV-32FS10/34FV10 Only)	
4	* A-1298-890-A	A BOARD, COMPLETE (KV-32FS10/32FV15/32XBR250/34FV10/34FV15/34FV15C/34FX250C Only)		7	* A-1298-957-A	AK BOARD, COMPLETE (KV32FV15/34FV15/34FV15C/34FV15K/34FV15T Only)	
4	* A-1298-965-A	A BOARD, COMPLETE (KV34FV15T Only)		7	* A-1298-980-A	AK BOARD, COMPLETE (KV-32XBR250/34FX250C Only)	
4	* A-1298-969-A	A BOARD, COMPLETE (KV34FV15K Only)		8	* A-1394-934-A	T BOARD, COMPLETE (KV-32XBR250/34FX250C Only)	
5	△ 8-598-431-00	TUNER, FSS BTF-WA411 (KV-32FS10/32FV15/32XBR250/34FV10/34FV15/34FV15C/34FX250C Only)		9	△ 8-598-430-00	TUNER, BTF-FA401	
5	△ 8-598-475-00	TUNER, FSS BTF-WL411 (KV-34FV15K Only)		10	1-557-056-31	CABLE, P-P (KV-32FV15/32XBR250/34FV15/34FV15C/34FV15K/34FV15T/34FX250C Only)	

The components identified by shading and "△" are critical for safety. Replace only with specified part number.

Les composants identifiés par un trame et une marque △ sont critiques pour la sécurité. Ne les remplacer que par une pièce portant le numéro spécifié.

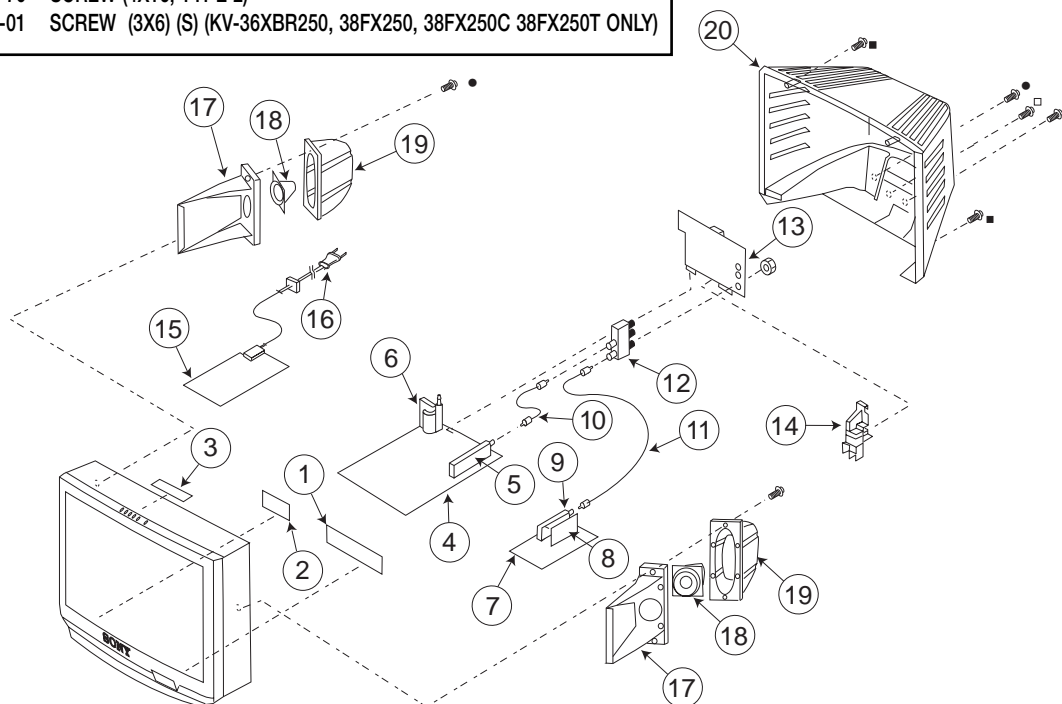
REF.NO.	PART NO.	DESCRIPTION	REMARK	REF.NO.	PART NO.	DESCRIPTION	REMARK
11	1-556-945-21	CABLE, P-P (KV-32FV15/32XBR250/34FV15/34FV15C/34FV15K/34FV15T/34FX250C Only)		16	△1-769-796-71	CORD, POWER (WITH CONNECTOR) (KV-34FV15C/34FX250C Only)	
12	8-598-414-10	ANTENNA CHANGER AS-2F (KV-32FV15/32XBR250/34FV15/34FV15C/34FV15K/34FV15T/34FX250C Only)		16	△1-775-468-11	CORD, POWER (WITH CONNECTOR) (KV-34FV15K Only)	
13	* A-1394-947-A	UX BOARD, COMPLETE (KV-32XBR250 Only)		16	△1-790-315-21	CORD, AC POWER (WITH CONNECTOR) (KV-34FV10/34FV15 Only)	
13	* A-1394-948-A	UX BOARD, COMPLETE KV-34FX250C Only)		16	△1-790-317-21	CORD, AC POWER (WITH CONNECTOR) (KV-32FS10/32FV15/32XBR250/34FV15T Only)	
13	* A-1394-938-A	UY BOARD, COMPLETE (KV-32FS10/34FV10 Only)		17	* 4-068-988-01	BAFFLE, SPEAKER	
13	* A-1394-943-A	UY BOARD, COMPLETE (KV-32FV15 Only)		18	1-529-336-11	SPEAKER (1-WAY) (KV-32FS10/32FV15/34FV15K/34FV15T Only)	
13	* A-1394-944-A	UY BOARD, COMPLETE (KV-34FV15/34FV15C/34FV15K/34FV15T Only)		18	1-529-358-11	SPEAKER (2-WAY) (KV-32XBR250/34FV10/34FV15/34FV15C/34FX250C Only)	
14	3-696-606-02	HINGE, VI		19	* 4-068-987-01	BOX, SPEAKER	
15	* A-1316-397-A	G BOARD, COMPLETE (KV-32FS10/32FV15/32XBR250 Only)		20	4-069-000-01	COVER, REAR (KV-32FV15/32XBR250/34FV15T/34FX250C Only)	
15	* A-1316-423-A	G BOARD, COMPLETE (KV-34FV15T Only)		20	4-069-000-21	COVER, REAR (KV-32FS10/34FV10/34FV15, 34FV15C/34FV15K Only)	
15	* A-1316-470-A	GA BOARD, COMPLETE (KV-34FV10/34FV15/34FV15C/34FV15K/34FX250C Only)					

The components identified by shading and "△" are critical for safety. Replace only with specified part number.

Les composants identifiés par un trame et une marque △ sont critiques pour la sécurité. Ne les remplacer que par une pièce portant le numéro spécifié.

7-2. CHASSIS (KV-36FS10/36FV15/36XBR250/38FV15K/38FX250/38FX250C/38FX250T)

- 7-682-566-04 SCREW (M4X20), TAPPING, (+-)(BV) (KV-36FV15, 36XBR250, 38FV15K, 38FX250, 38FX250C, 38FX250T ONLY)
- 7-685-648-79 SCREW (3X12, TYPE 2)
- 7-685-663-79 SCREW (4X16, TYPE 2)
- 7-685-871-01 SCREW (3X6) (S) (KV-36XBR250, 38FX250, 38FX250C 38FX250T ONLY)

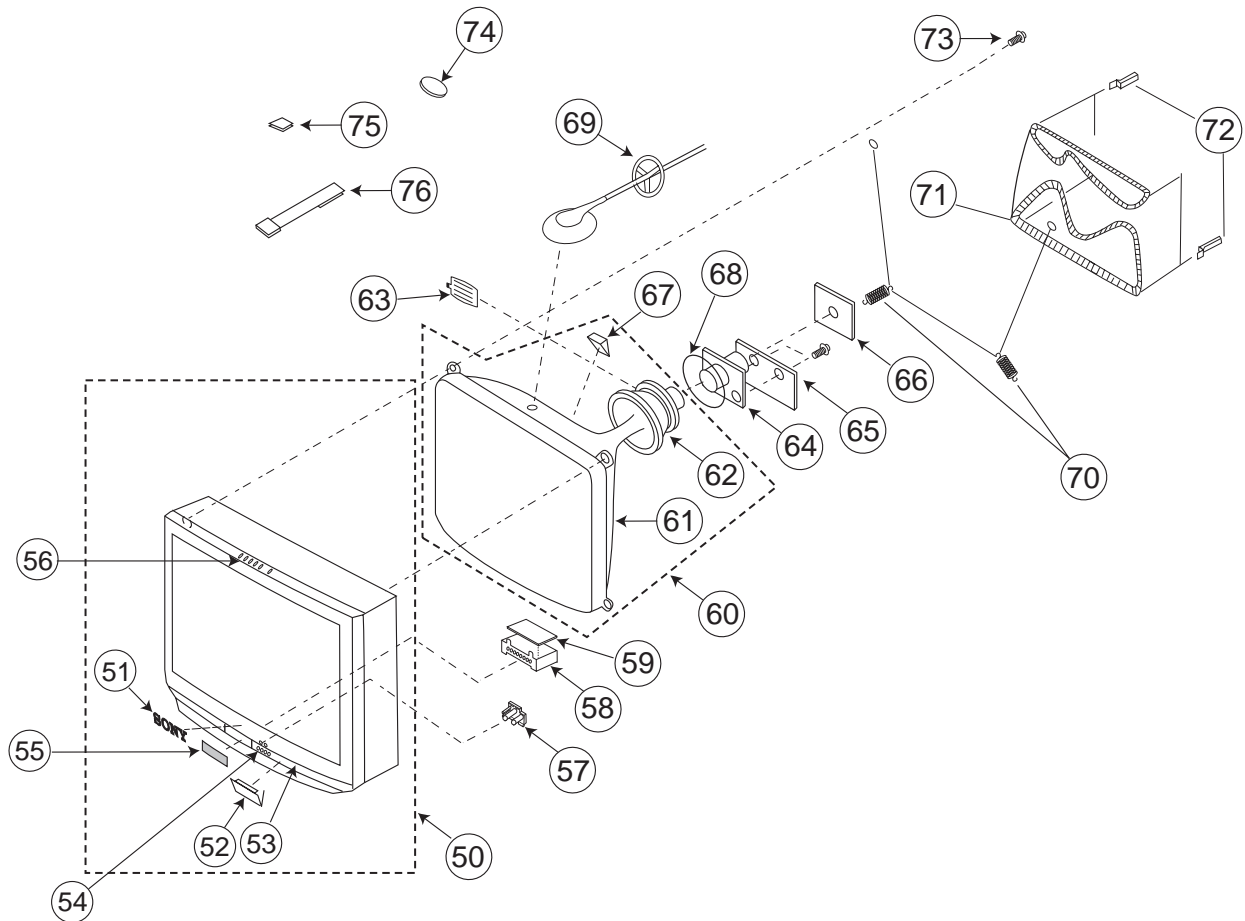


REF.NO.	PART NO.	DESCRIPTION	REMARK	REF.NO.	PART NO.	DESCRIPTION	REMARK
1	* A-1372-634-A	HA BOARD, COMPLETE		13	* A-1394-938-A	UY BOARD, COMPLETE (KV-36FS10 Only)	
2	* A-1372-635-A	HB BOARD, COMPLETE		13	* A-1394-943-A	UY BOARD, COMPLETE (KV-36FV15 Only)	
3	* A-1372-636-A	HX BOARD, COMPLETE		13	* A-1394-944-A	UY BOARD, COMPLETE (KV-38FV15K Only)	
4	* A-1298-961-A	A BOARD, COMPLETE (KV-36FS10/36FV15/36XBR250/38FX250/38FX250C Only)		13	* A-1394-947-A	UX BOARD, COMPLETE (KV-36XBR250 Only)	
4	* A-1298-993-A	A BOARD, COMPLETE (KV-38FV15K Only)		13	* A-1394-948-A	UX BOARD, COMPLETE (KV-38FX250/38FX250C/38FX250T Only)	
4	* A-1298-994-A	A BOARD, COMPLETE (KV-38FX250T Only)		14	3-696-606-02	HINGE, VI	
5	△ 8-598-431-00	TUNER, FSS BTF-WA411 (KV-36FS10/36FV15/36XBR250/38FX250/38FX250C Only)		15	* A-1316-397-A	G BOARD, COMPLETE (KV-36FS10/36FV15/36XBR250 Only)	
5	△ 8-598-475-00	TUNER, FSS BTF-WL411 (KV-38FV15K Only)		15	* A-1316-423-A	G BOARD, COMPLETE (KV-38FX250T Only)	
5	△ 8-598-477-00	TUNER, FSS BTF-WG411 (KV-38FX250T Only)		15	* A-1316-470-A	GA BOARD, COMPLETE (KV-38FV15K/38FX250/38FX250C Only)	
6	△ 1-453-286-11	FBT ASSY, NX4600/X4C4		16	△ 1-769-796-71	CORD, POWER (WITH CONNECTOR) (KV-38FX250/38FX250C Only)	
7	* A-1298-956-A	AK BOARD, COMPLETE (KV-36FS10 Only)		16	△ 1-775-468-11	CORD, POWER (WITH CONNECTOR) (KV-38FV15K Only)	
7	* A-1298-957-A	AK BOARD, COMPLETE (KV-36FV15/38FV15K Only)		16	△ 1-790-317-21	CORD, AC POWER (WITH CONNECTOR) (KV-36FS10/36FV15/36XBR250/38FX250T Only)	
7	* A-1298-980-A	AK BOARD, COMPLETE (KV-36XBR250/38FX250/38FX250C/38FX250T Only)		17	* 4-068-988-01	BAFFLE, SPEAKER	
8	* A-1394-934-A	T BOARD, COMPLETE (KV-36XBR250/38FX250/38FX250C/38FX250T Only)		18	1-529-336-11	SPEAKER (1-WAY) (KV-36FS10/36FV15/38FV15K Only)	
9	△ 8-598-430-00	TUNER, FSS BTF-FA401		18	1-529-358-11	SPEAKER (2-WAY) (KV-36XBR250/38FX250/38FX250C/38FX250T Only)	
10	1-557-056-31	CABLE, P-P (KV-36FV15/36XBR250/38FV15K/38FX250/38FX250C/38FX250T Only)		19	* 4-068-987-01	BOX, SPEAKER	
11	1-556-945-21	CABLE, P-P (KV-36FV15/36XBR250/38FV15K/38FX250/38FX250C/38FX250T Only)		20	4-068-998-01	COVER, REAR (KV-36FS10/36FV15/36XBR250, 38FV15K/38FX250/38FX250C/38FX250T Only)	
12	8-598-414-10	ANTENNA CHANGER AS-2F (KV-36FV15/36XBR250/38FV15K/38FX250/38FX250C/38FX250T Only)					

The components identified by shading and "Δ" mark are critical for safety. Replace only with specified part number.

Les composants identifiés par un trame et une marque Δ sont critiques pour la sécurité. Ne les remplacer que par une pièce portant le numéro spécifié.

7-3. PICTURE TUBE



REF.NO.	PART NO.	DESCRIPTION	REMARK	REF.NO.	PART NO.	DESCRIPTION	REMARK
50	X-4036-678-2	BEZNET ASSY (KV-32FS10 Only)	51-53	54	4-068-984-01	MULTI-BUTTON (BOTTOM)	
50	X-4036-679-1	BEZNET ASSY (KV-32FV15/34FV15T Only)	51-53	55	4-068-991-01	PANEL, IR (KV-32XBR250/34FX250C/36XBR250, 38FX250/38FX250C/38FX250T Only)	
50	X-4036-679-2	BEZNET ASSY (KV-34FV10/34FV15/34FV15C/ 34FV15K Only)	51-53	56	4-068-982-01	MULTI-BUTTON (TOP)	
50	X-4036-680-1	BEZNET ASSY (KV-32XBR250/34FX250C Only)	51-53	57	* 4-068-986-01	GUIDE, LED	
50	X-4036-683-1	BEZNET ASSY (KV-36FS10 Only)	51-53	58	4-068-992-01	CASE, IR SHIELD (KV-32XBR250/34FX250C/36XBR250, 38FX250/38FX250C/38FX250T Only)	
50	X-4036-684-1	BEZNET ASSY 36FV15/38FV15K Only)	51-53	59	4-071-399-01	CUSHION, 45MM X 100MM (KV-36XBR250/38FX250/38FX250C/ 38FX250T Only)	
50	X-4036-685-1	BEZNET ASSY (KV-36XBR250/38FX250/38FX250C, 38FX250T Only)	51-53	60 Δ	8-735-047-61	ITC 34RSN-A1	61-62
51	3-704-179-31	EMBLEM (NO. 9), SONY		60 Δ	8-735-050-61	ITC 34RSN-A1E (KV-34FX250C ONLY)	61-62
52	4-068-985-01	DOOR		60 Δ	8-735-048-61	ITC 38RSN-A1	61-62
53	3-703-574-00	RETAINER, DOOR				(KV-36FS10/36FV15/36XBR250/38FV15K/ 38FX250/38FX250T Only)	

The components identified by shading and "△" mark are critical for safety. Replace only with specified part number.

Les composants identifiés par un trame et une marque △ sont critiques pour la sécurité. Ne les remplacer que par une pièce portant le numéro spécifié.

REF.NO.	PART NO.	DESCRIPTION	REMARK	REF.NO.	PART NO.	DESCRIPTION	REMARK
60	△ 8-735-080-61	ITC 38RSN-A1E (KV-38FX250C Only)	61-62	69	3-704-372-31	HOLDER, HV CABLE	
61	△ 8-735-047-05	CRT 34RSN (KV-32FS10/34FV10/34FV15/ 34FV15C/34FV15K/34FV15T Only)		70	4-036-329-01	SPRING (B), TENSION	
62	△ 8-451-499-21	DY Y34RSA-X (KV-32FS10/34FV10/34FV15/ 34FV15C/34FV15K/34FV15T Only)		71	△ 1-419-163-11	COIL, DEMAGNETIZATION (KV-34FV10/34FV15/34FV15C/34FV15K/ 34FX250C Only)	
63	2-163-920-01	PLATE, TLH CORRECTION (KV-32FS10/34FV10/34FV15/34FV15C/ 34FV15K/34FV15T Only)		71	△ 1-419-193-11	COIL, DEMAGNETIZATION (KV-38FV15K/38FX250/38FX250C Only)	
64	△ 8-453-007-41	NA324-M4 (KV-32FS10/34FV10/34FV15/ 34FV15C/34FV15K/34FV15T Only)		71	△ 1-416-827-11	COIL, DEMAGNETIZATION (KV-32FS10/32FV15/32XBR250/34FV15T Only)	
65	* A-1375-187-A	WA BOARD, MOUNTED (KV-32FS10/32FV15/ 32XBR250/34FV10/34FV15/34FV15K/ 34FV15T/34FX250C Only)		71	△ 1-416-828-11	COIL, DEMAGNETIZATION (KV-36FS10/36FV15/36XBR250/ 38FX250T Only)	
65	* A-1375-191-A	WA BOARD, MOUNTED (KV-36FS10/36FV15/ 36XBR250/36XBR250C/38FV15K/38FX250/ 38FX250C/38FX250T Only)		72	4-065-895-02	HOLDER, DGC	
66	* A-1331-942-A	C BOARD, COMPLETE		73	4-046-765-01	SCREW, TAPPING (7) +CROWN WASHER	
67	4-053-005-01	SPACER, DY (KV-32FS10/34FV10/34FV15/ 34FV15C/34FV15K/34FV15T Only)		74	1-452-094-00	DISC, CIRCULAR (KV-32FS10/34FV10/ 34FV15/34FV15C/34FV15K/34FV15T Only)	
68	1-452-896-11	COIL, NA ROTATION (KV-32FS10/34FV15/ 34FV15C/34FV15K/34FV15T Only)		75	1-452-032-00	MAGNET, DISC (KV-32FS10/34FV10/34FV15/34FV15C, 34FV15K/34FV15T Only)	
				76	4-062-047-01	PIECE A (110), CONV CORRECT (KV-32FS10/34FV10/34FV15/34FV15C/ 34FV15K/34FV15T Only)	