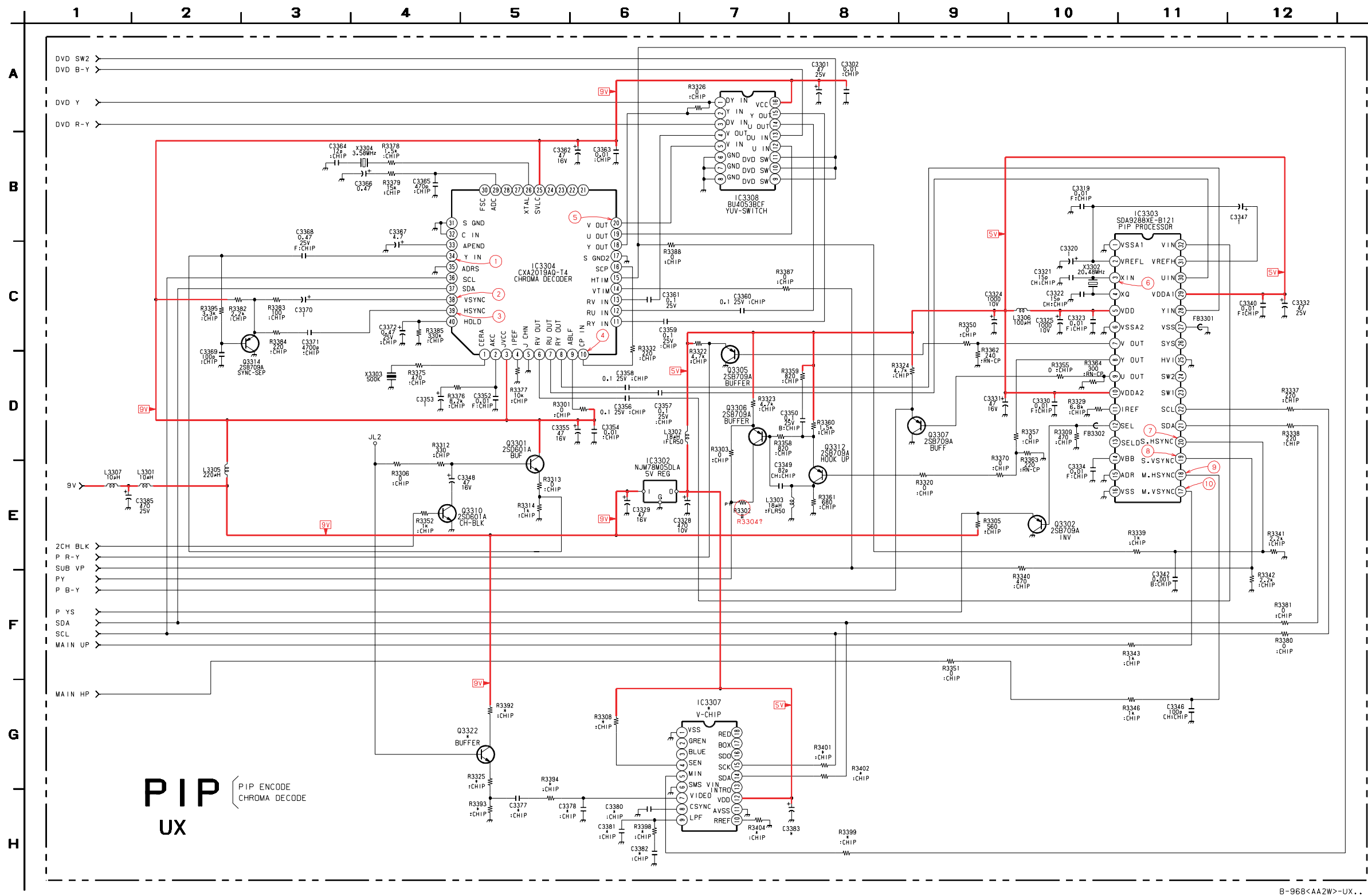
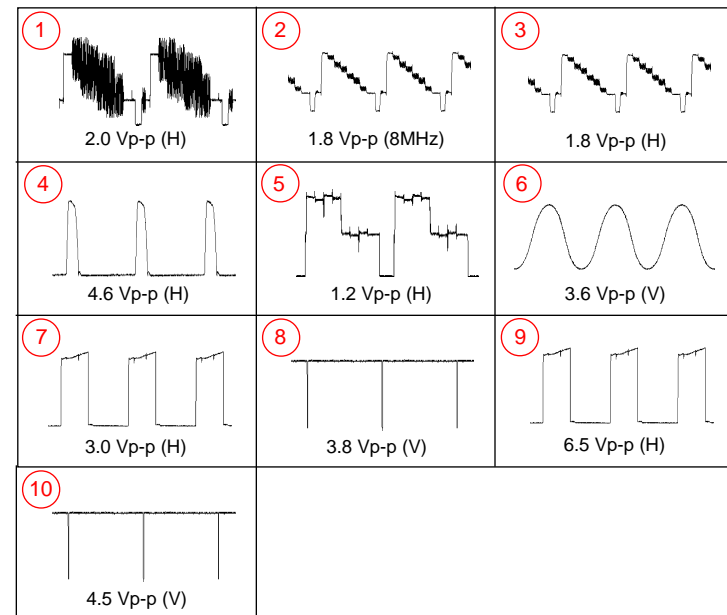


KV-32FS10/32FV15/32XBR250/34FV10/34FV15/34FV15C/34FX250C/34FV15K
34FV15T/36FS10/36FV15/36XBR250/38FX250/38FX250C/38FX250T/38FV15K

UX PIP BOARD SCHEMATIC DIAGRAM



UX (PIP) BOARD WAVEFORMS



UX (PIP) BOARD IC VOLTAGE LIST

IC3302				IC3303				IC3304			
pin	volt			pin	volt			pin	volt		
IN	8.7	20	0.4	10	0.7	34	3.6	16	NC		
OUT	5.1	21	4.7	11	3.6	35	GND	17	NC		
GND	GND	22	4.7	12	4.2	36	4.7	18	NC		
IC3303				IC3307				IC3307			
pin	volt			pin	volt			pin	volt		
1	GND	25	NC	13	4.2	37	4.7	1	3.5		
2	3.0	26	NC	14	0.1	38	4.1	2	2.7		
3	2.3	27	0	15	0.7	39	3.3	3	3.2		
4	1.8	28	1.7	16	0.7	40	0.6	4	2.7		
5	4.8	29	5.0	17	2.7	1	GND	5	2.7		
6	GND	30	2.2	18	2.7	2	NC	6	GND		
7	0.1	31	4.0	19	2.7	3	NC	7	GND		
8	0	32	2.2	20	2.7	4	5.1	8	GND		
9	0.2	33	NC	21	2.7	5	0.7	9	0.3		
10	5.0	pin	volt	22	NC	6	GND	10	0.3		
11	1.9	1	2.1	23	NC	7	2.9	11	0.3		
12	0	2	3.9	24	NC	8	2.4	12	2.7		
13	NC	3	8.5	25	NC	9	1.4	13	3.2		
14	-2.9	4	1.6	26	NC	10	1.1	14	2.7		
15	GND	5	GND	27	NC	11	GND	15	2.7		
16	GND	6	2.8	28	NC	12	5.1	16	8.5		
17	5.0	7	2.8	29	NC	13	NC				

UX (PIP) BOARD TRANSISTOR VOLTAGE LIST

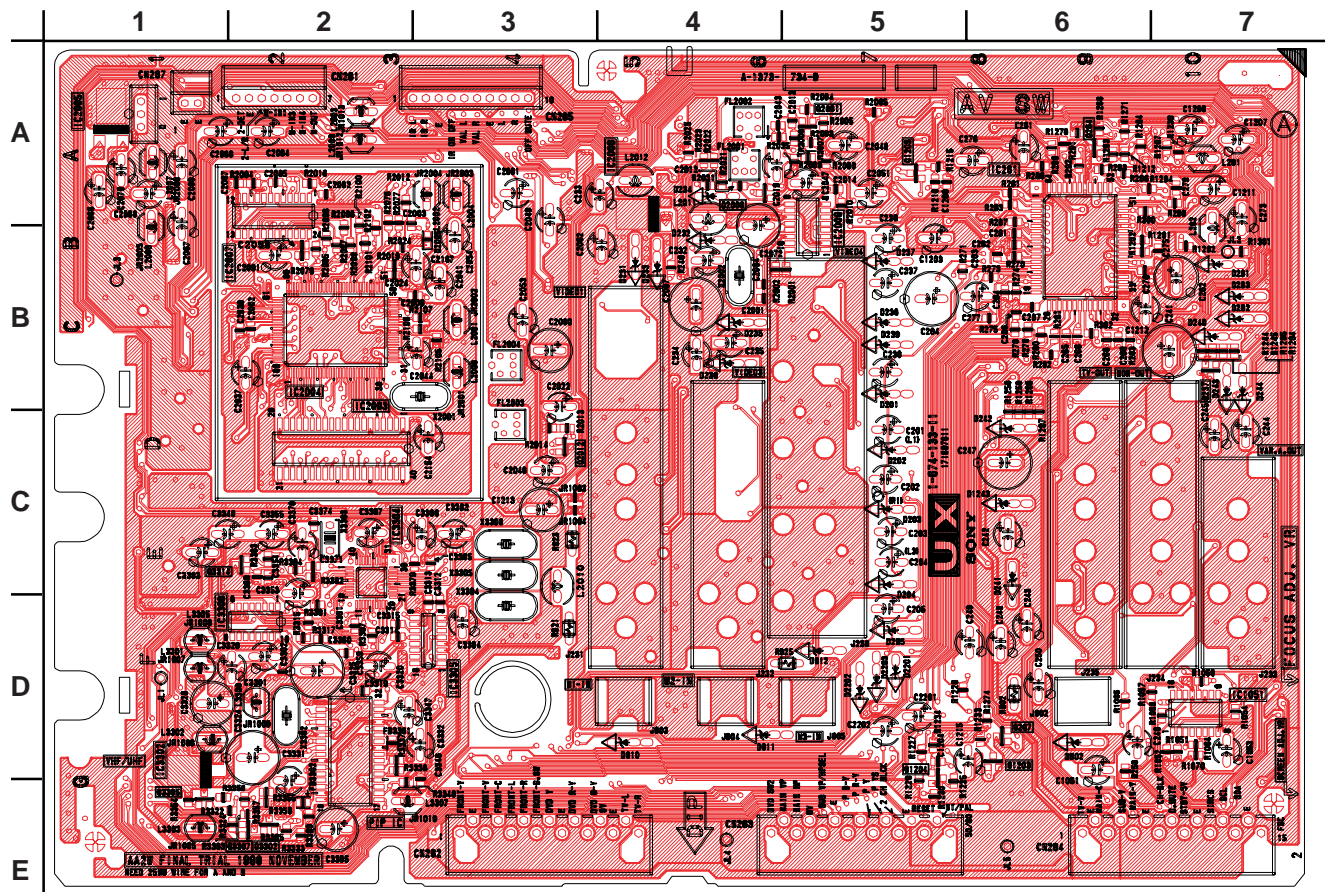
REF. NO.	LOCATION	VOLTAGE
Q3301	H-5	0.1
Q3302	H-6	560p
Q3305	H-6	0.1
Q3306	H-6	0.0088
Q3307	H-6	0.069
Q3310	H-8	0.1
Q3312	G-7	Z86130112SSC
Q3314	G-5	2SD601A-Q
Q3322	G-6	0
R3306	G-5	100
R3307	G-5	100
R3308	G-5	100
R3309	H-5	470
R3310	H-6	6.8K
R3311	H-8	100
R3401	G-8	100
R3402	G-8	100
R3404	H-7	10K

All voltages are in V

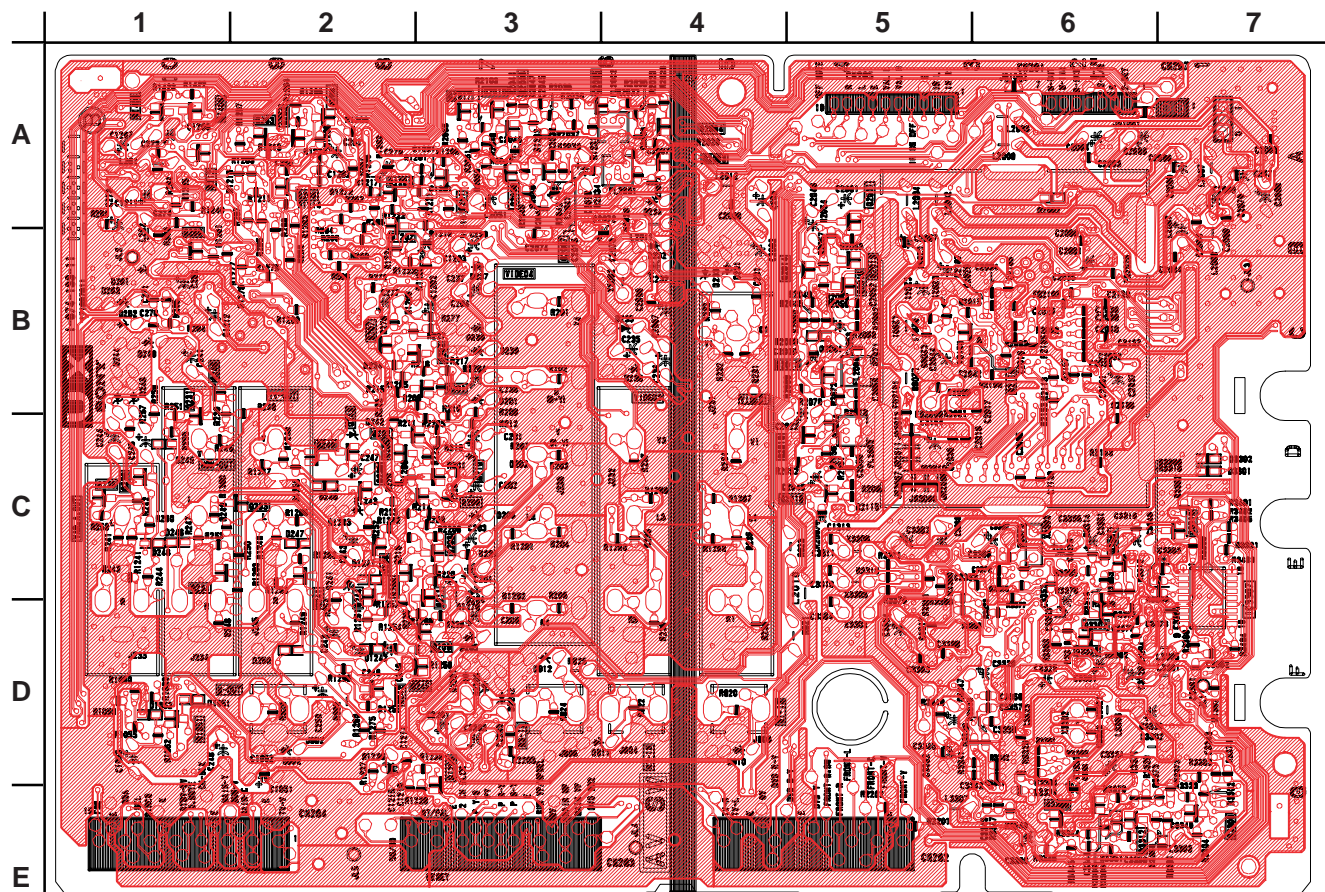


[3D DIGITAL, COMB FILTER, AV SW, AUDIO CONTROL, SRS, PIP ENCODE, CHROMA DECODE]

[COMPONENT SIDE]



[CONDUCTOR SIDE]



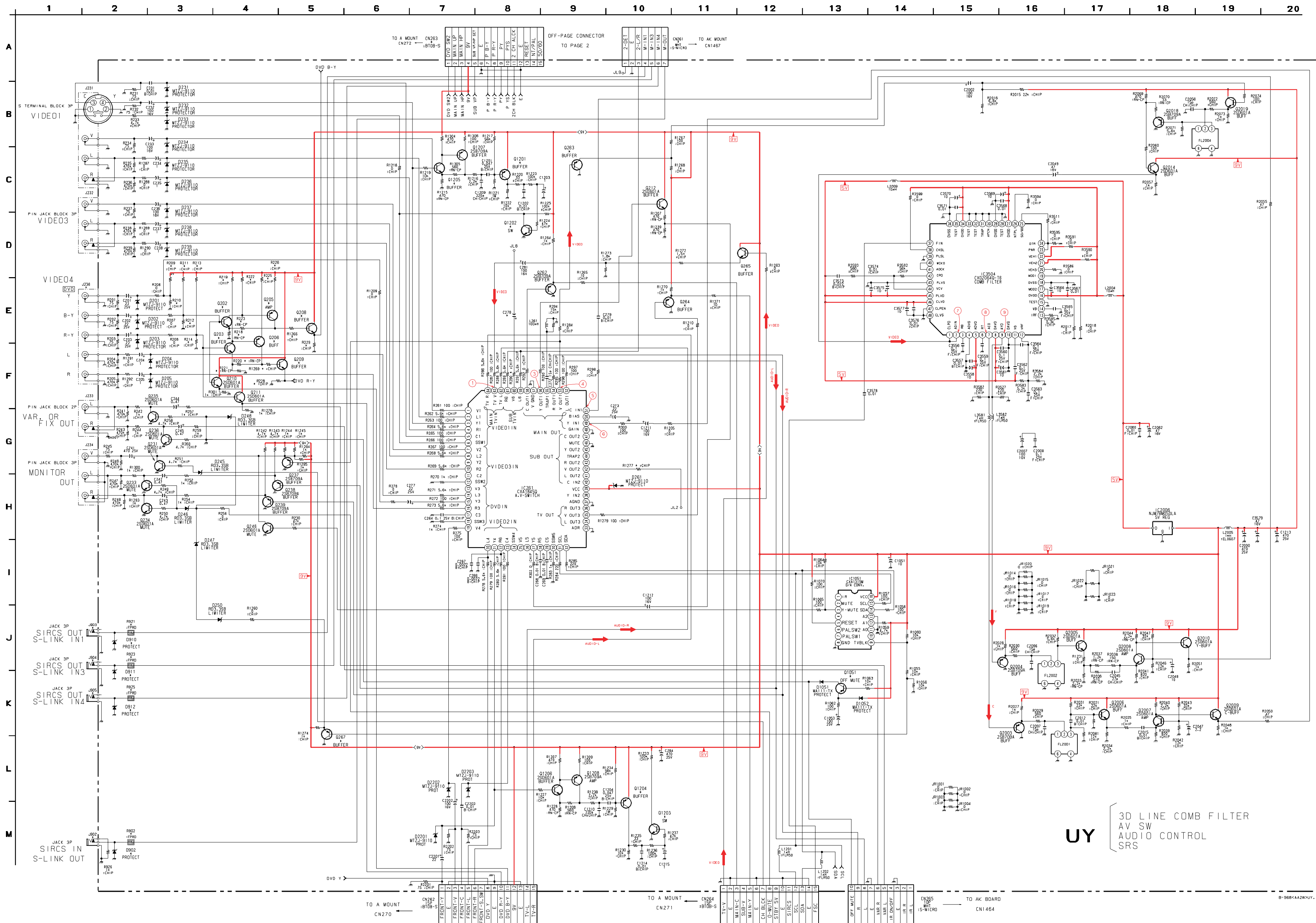
UX (PIP) BOARD (*) MARK LIST

REF. NO.	LOCATION	MARK
C3377	H-5	0.1
C3378	H-6	560p
C3380	H-6	0.1
C3381	H-6	0.0088
C3382	H-6	0.069
C3383	H-8	0.1
IC3307	G-7	Z86130112SSC
Q3322	G-5	2SD601A-Q
R3306	G-6	0
R3325	G-5	100
R3326	G-5	100
R3303	H-5	100
R3394	H-5	470
R3398	H-6	6.8K
R3399	H-8	100
R3401	G-8	100
R3402	G-8	100
R3404	H-7	10K

UX BOARD LOCATOR LIST

DIODE		IC		TRANSISTOR		A		B		A		B	
D221	B-4	IC261	A-6	Q212	A-1	Q266		B-1		Q2011	A	B	
D232	B-4	IC1051	D-7	Q221	C-1	Q267	D-6			Q2012	C-3	A-5	
D233	B-4	IC2003	B-2	Q233	C-2	Q268		A-2		Q2013		B-5	
D234	A-4	IC2004	B-2	Q234	C-1	Q2021		A-2		Q2014		B-5	
D235	B-4	IC2005	A-1	Q235	C-1	Q1202		B-2		Q2015		B-5	
D236	B-4	IC2006	A-4	Q236	C-1	Q1203	D-6			Q2016		B-5	
D237	B-5	IC2007	B-2	Q237	B-7	Q1204	D-5			Q2017		A-3	
D238	B-5	IC2009	B-5	Q238	C-2	Q1205	A-5			Q2018		C-5	
D239	B-5	IC3302	D-1	Q239	C-2	Q1206		D-3		Q2119		B-6	
D245		C-1	D-2	Q240	C-2	Q1405		A-1		Q3301		C-6	
D246		C-1	IC3304	C-3	Q241	C-2	Q1406	A-1		Q3302	E-2		
D247		C-1	IC3305	D-3	Q242	D-2	Q2001	A-5		Q3305	E-1		
D248		C-1	IC3307		Q243	C-2	Q2003	A-4		Q3306		E-6	
D249		C-2		Q244	C-2	Q2004		A-4		Q3307	E-2		
D250		D-2		Q245	D-2	Q2005		A-4		Q3310		C-7	
D261		B-7		Q246	B-1	Q2006	A-4			Q3312		E-6	
D902		D-6		Q262	A-4	Q2007		B-3		Q3314	C-1	D-6	
D910		D-4		Q263	A-2	Q2008		A-3		Q3322			
D911		D-4		Q264	A-9	Q2009		A-3					
D1051		D-1		Q265		Q2010		A-3					
D2005		B-3											
D1052		D-1											
D2201		D-5											
D2202		D-5											
D2203		D-5											

UY MAIN BOARD SCHEMATIC DIAGRAM



UY MAIN BOARD (*) MARK LIST

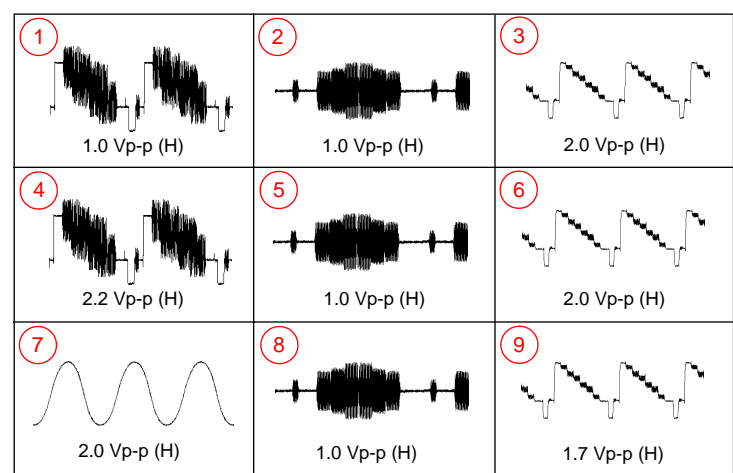
REF. NO.	LOCATION	KV-32FS10 KV-36FS10	KV-32FV15 KV-36FV15	KV-34FV15C KV-34FV15K KV-38FV15T
C278	E-8	#	22	22
CN281	A-10	#	CONNECTOR	CONNECTOR
CN283	A-8	#	BOARD	BOARD
D902	M-2	#	MTZJ-T-9110	MTZJ-T-9110
D910	J-2	#	MTZJ-T-9110	MTZJ-T-9110
D911	K-2	#	MTZJ-T-9110	MTZJ-T-9110
D912	K-2	#	MTZJ-T-9110	MTZJ-T-9110
J902	M-2	#	3P	3P
J903	J-2	#	3P	3P
J904	J-2	#	3P	3P
J905	K-2	#	3P	3P
Q202	E-4	#	2SD601A-Q	2SD601A-Q
Q203	E-4	#	2SD601A-Q	2SD601A-Q
Q205	E-4	#	2SA1162-G	2SA1162-G
Q206	E-4	#	2SA1162-G	2SA1162-G
Q208	E-5	#	2SD601A-Q	2SD601A-Q
Q209	F-5	#	2SD601A-Q	2SD601A-Q
Q263	C-9	2SA1162-G	#	2SA1162-G
Q264	E-11	2SA1162-G	#	2SA1162-G
Q265	D-12	2SD601A-Q	#	2SD601A-Q
Q267	L-5	2SA1162-G	#	2SA1162-G
Q268	K-13	2SA1162-G	#	2SA1162-G
Q269	C-8	2SA1162-G	#	2SA1162-G
Q270	D-8	2SD601A-Q	#	2SD601A-Q
Q273	M-10	2SD601A-Q	#	2SD601A-Q
Q274	L-10	2SA1162-G	#	2SA1162-G
Q275	C-7	2SD601A-Q	#	2SD601A-Q
R209	D-3	#	47K	47K
R210	E-3	#	22K	22K
R211	D-3	#	47K	47K
R212	E-3	#	22K	22K
R213	D-3	#	47K	47K
R214	E-3	#	22K	22K
R218	E-4	#	470	470
R219	D-4	#	1K	1K
R220	F-4	#	560	560
R221	F-4	#	470	470
R222	D-4	#	1K	1K
R223	E-4	#	560	560
R225	D-4	#	100	100
R226	D-4	#	100	100
R228	F-4	#	1K	1K
R229	E-5	#	1K	1K
R290	F-8	#	100	100
R902	M-2	#	100	100
R921	J-2	#	100	100
R923	J-2	#	100	100
R925	K-2	#	100	100
R1286	E-5	#	470	470
R1289	F-4	#	470	470
R1277	G-10	#	100	100

UY (MAIN) BOARD TRANSISTOR VOLTAGE LIST

	B	C	E
Q202	2.7	8.1	2.1
Q203	2.7	8.1	2.1
Q205	8.1	4.1	8.7
Q206	8.1	4.1	8.7
Q208	4	9.1	3.4
Q209	4	9.1	3.4
Q210	2.7	9.1	2.1
Q211	2.7	9.1	2.1
Q212	4.6	9.1	3.9
Q231	0	0.2	GND
Q233	-0.1	0	GND
Q234	-0.1	0	GND
Q235	-0.1	0	GND
Q236	-0.1	0	GND
Q237	4.6	GND	0.3
Q238	4.7	GND	5.3
Q239	4.7	GND	5.3
Q246	0.3	0.2	GND
Q262	4.6	GND	5.2
Q263	4.6	GND	5.2
Q264	4.4	GND	5.0
Q265	4.5	9.1	3.8
Q267	0.2	GND	0.9
Q1051	9.1	-1.4	9.0
Q1201	8.6	0	9.1
Q1202	0	4.4	GND
Q1203	0	4.4	GND
Q1204	8.6	0	9.1
Q1205	4.6	9.1	4.0
Q1206	4.6	9.1	4.0
Q1207	8.9	3.8	9.0
Q1208	8.9	3.8	9.0
Q2003	1.1	GND	1.8
Q2004	1.1	GND	1.8
Q2005	4.5	9.1	3.8
Q2006	4.5	9.1	3.9
Q2007	2.3	4.4	1.7
Q2008	2.3	4.6	1.6
Q2009	4.4	9.1	3.7
Q2010	4.6	9.1	3.9
Q2014	5.1	9.1	4.4
Q2018	4.1	GND	4.8
Q2019	5.2	9.1	4.5

All voltages are in V

UY (MAIN) BOARD WAVEFORMS



UY (MAIN) BOARD IC VOLTAGE LIST

IC261	pin	volt	26	NC	53	4.4	14	4.7	IC3504	pin	volt	25	0
1	4.5	28	4.5	55	4.4	16	8.9	1	1.4	27	4.8		
2	4.5	29	4.5	56	4.4			2	1.4	28	GND		
3	4.5	30	0	57	GND			3	0.5	29	GND		
4	4.5	31	4.7	58	4.4			4	0	30	GND		
5	4.5	32	4.7	59	4.5			5	4.8	31	GND		
6	4.5	33	GND	60	4.5			6	2.6	32	GND		
7	4.5	34	NC	61	4.5			7	1.0	33	GND		
8	4.5	35	4.2	62	4.5			8	4.8	34	4.8		
9	NC	36	NC	63	4.5			9	4.8	35	GND		
10	4.5	37	GND	64	4.5			10	0	36	GND		
11	NC	38	NC					11	2.7	37	2.3		
12	0	39	9					12	2.0	38	4.8		
13	4.5	40	NC	1	NC			13	2.0	39	GND		
14	4.5	41	NC	2	NC			14	1.0	40	2.2		
15	4.5	42	4.4	3	0.4			15	GND	41	2.2		
16	4.5	43	NC	4	NC			16	4.8	42	3.3		
17	4.5	44	NC	5	6.1			17	0.3	43	0		
18	0	45	NC	6	NC			18	GND	44	3.3		
19	4.5	46	GND	7	NC			19	0.3	45	4.8		
20	4.5	47	NC	8	GND			20	0	46	4.8		
21	4.5	48	GND	9	NC			21	4.8	47	GND		
22	4.5	49	4.5	10	NC			22	4.8	48	GND		
23	4.5	50	4.5	11	GND			15	NC	23	0		
24	NC	51	4.5	12	8.9			16	NC	24	0		
25	NC	52	4.6	13	GND								

All voltages are in V

UY
3D LINE COMB FILTER
AV SW
AUDIO CONTROL
SRS