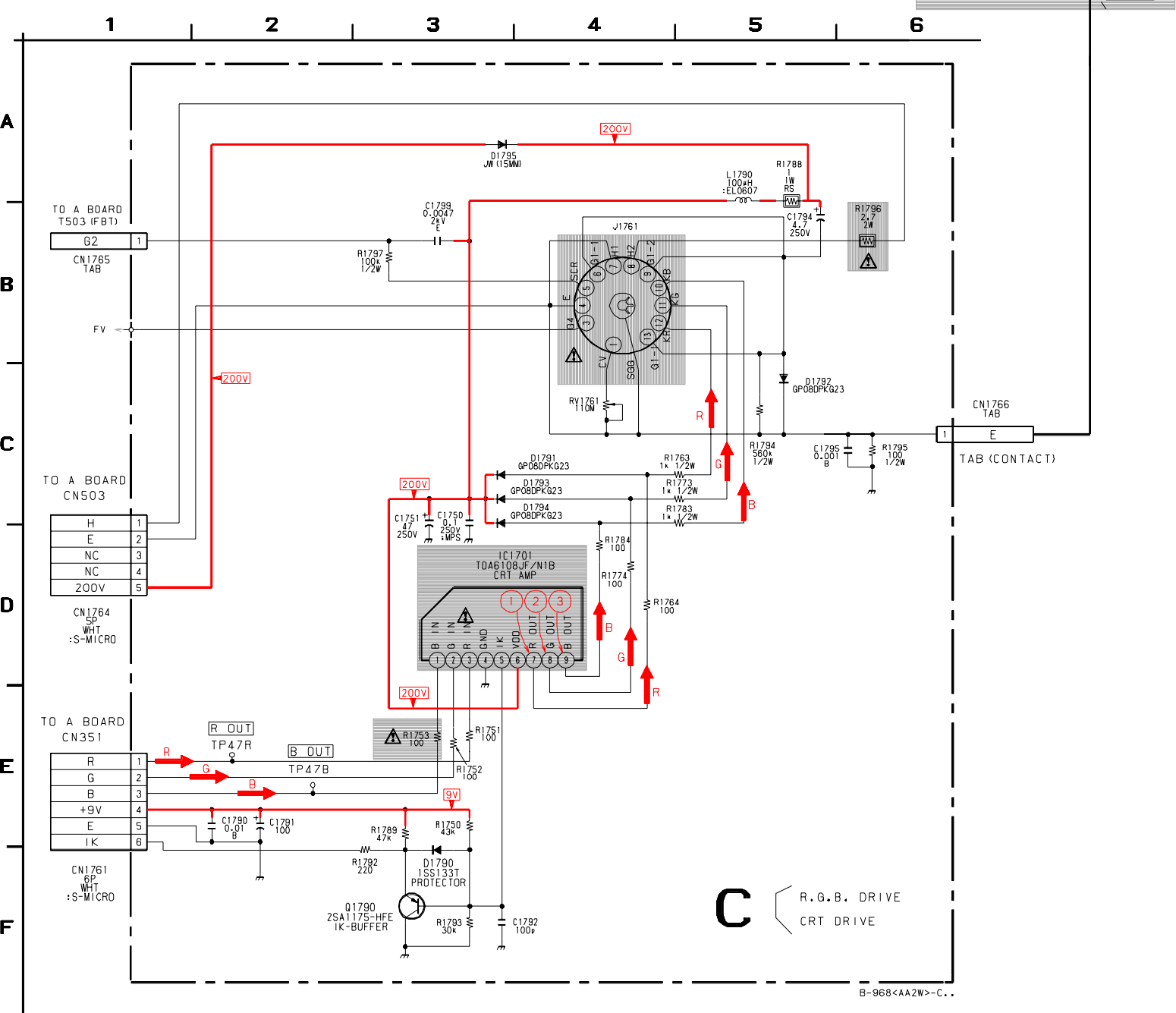
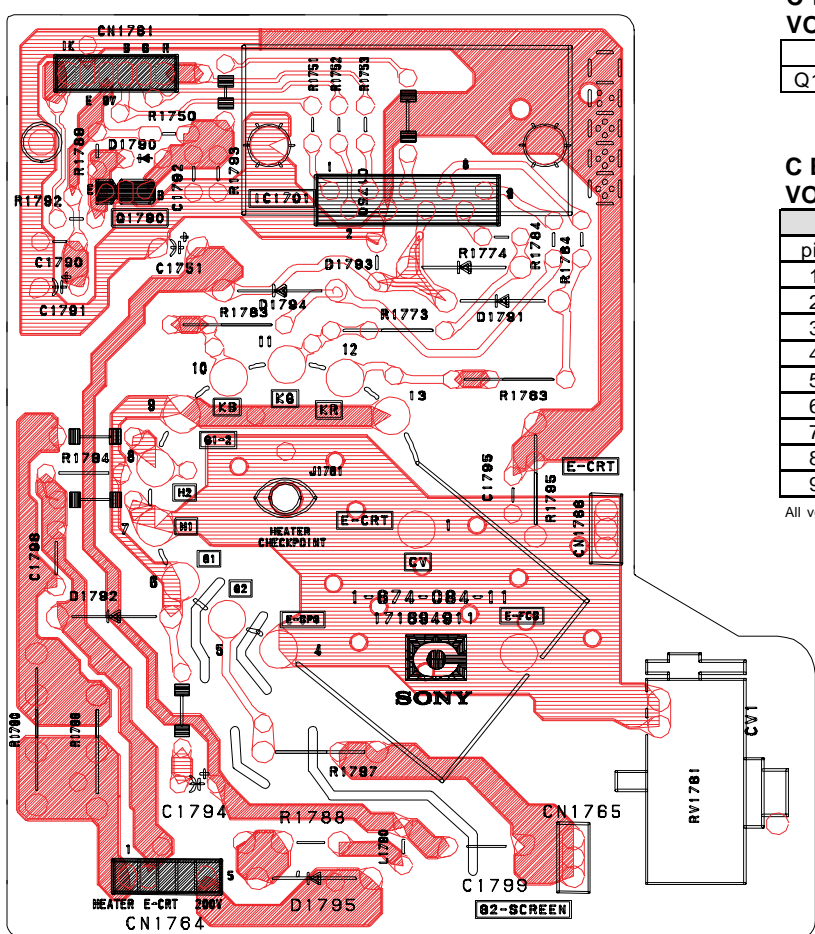


C BOARD SCHEMATIC DIAGRAM



C [RGB DRIVE, CRT DRIVE]



C BOARD TRANSISTOR VOLTAGE LIST

	B	C	E
Q1790	4.8	GND	4.4

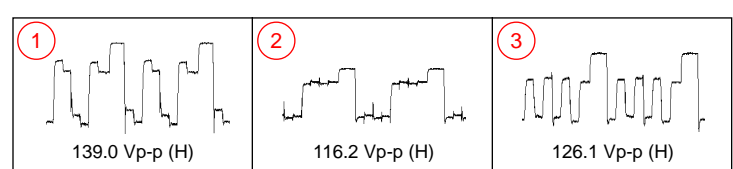
All voltages are in V

C BOARD IC VOLTAGE LIST

pin	volt
1	1.8
2	1.9
3	2.0
4	GND
5	4.8
6	208.0
7	149.2
8	150.3
9	153.9

All voltages are in V

C BOARD WAVEFORMS



G BOARD IC VOLTAGE LIST

pin	volt	pin	volt
B-1	-1.1	1	134.0
B-2	151.4	2	NC
C-1	152.8	3	2.4
C-2	298.6	4	9.3
E-1	GND	5	GND
E-2	152.1		

All voltages are in V

G BOARD TRANSISTOR VOLTAGE LIST

	B	C	E
Q622	0.4	1.7	GND
Q623	0.6	0	GND
Q624	12.6	0	12.2
Q644	0	11.8	GND
Q645	12.2	GND	9.1
Q646	6.2	6.9	6.9
Q647	0	12.2	GND
Q648	0.7	0	GND
Q649	11.5	0	11.8
Q650	0	2.2	GND
Q651	13.5	0	135.5
Q652	3.5	0	3.5
Q653	0	3.5	GND

All voltages are in V

G BOARD TRANSISTOR VOLTAGE LIST

	D	G	S
Q621	147.3	1.6	0

All voltages are in V

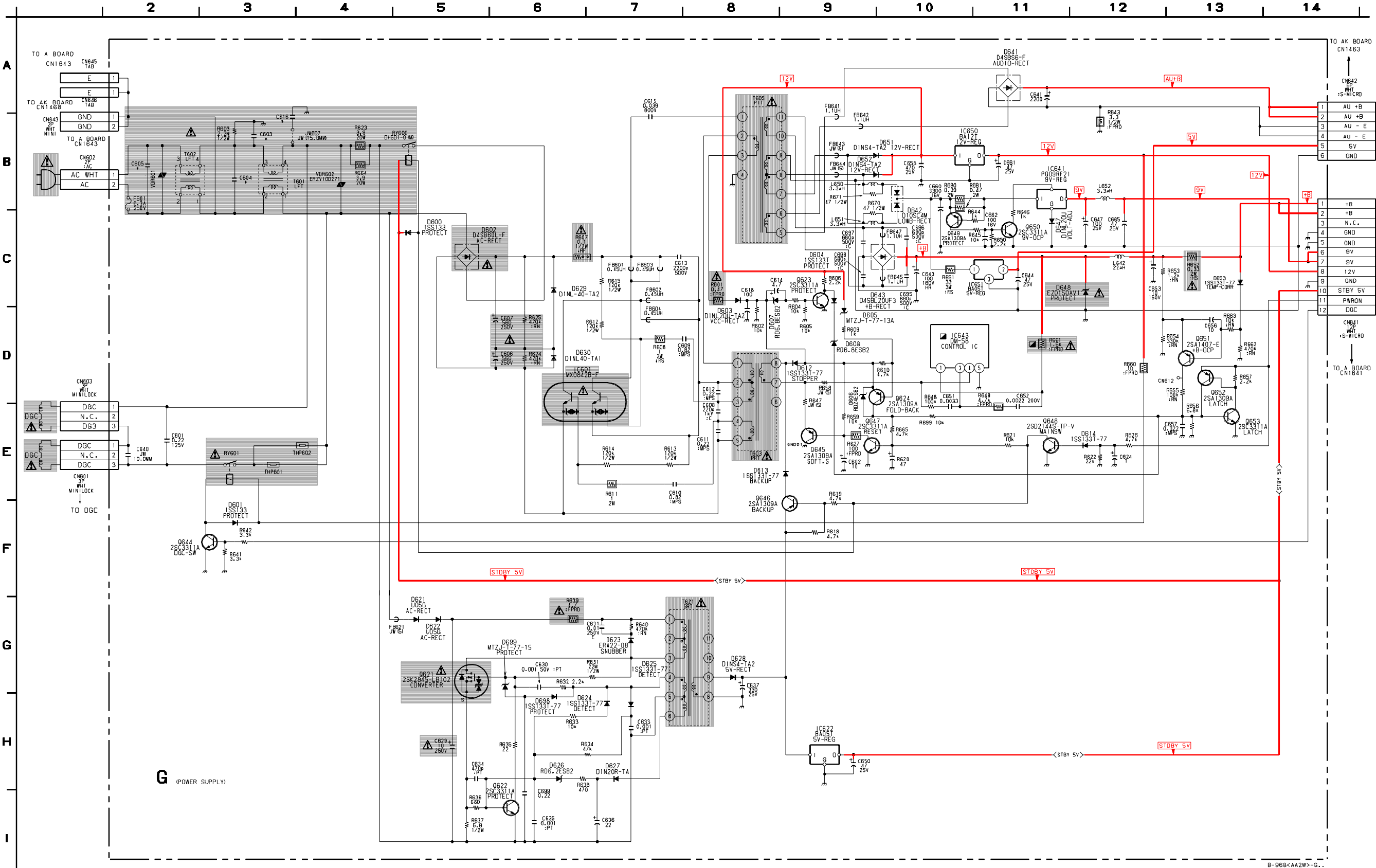
G BOARD LOCATOR LIST

DIODE	IC
D600	A-5
D601	A-8
D602	C-3
D603	B-7
D604	E-7
D605	A-8
D606	A-9
D607	D-7
D608	E-7
D612	B-8
D613	A-7
D614	B-11
D621	B-5
D622	B-5
D623	B-6
D624	A-6
D625	A-6
D626	A-5
D627	A-6
D628	A-7
D629	E-3
D630	D-4
D641	B-9
D642	C-9
D643	D-8
D647	D-10
D648	D-9
D651	C-9
D652	B-8
D653	E-8
D658	B-6
D659	B-6

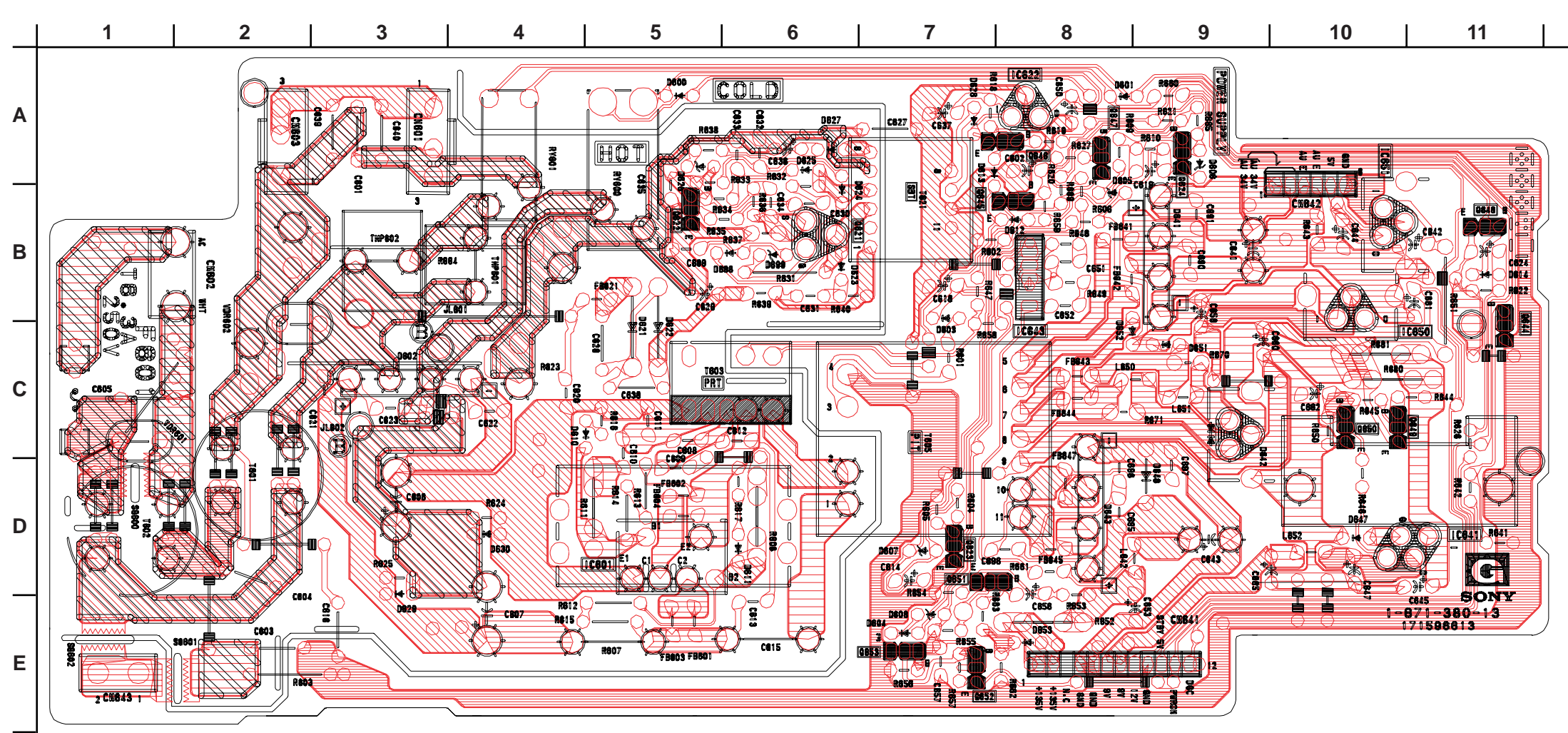
G BOARD (*) MARK LIST

REF. NO.	LOCATION	KV-36XBR250	KV-38FX250T
C603	B-3	1000p	2200p
C604	B-3	0.22	0.47
C605	B-2	0.22	0.47
C616	B-4	1000p	2200p

G BOARD SCHEMATIC DIAGRAM



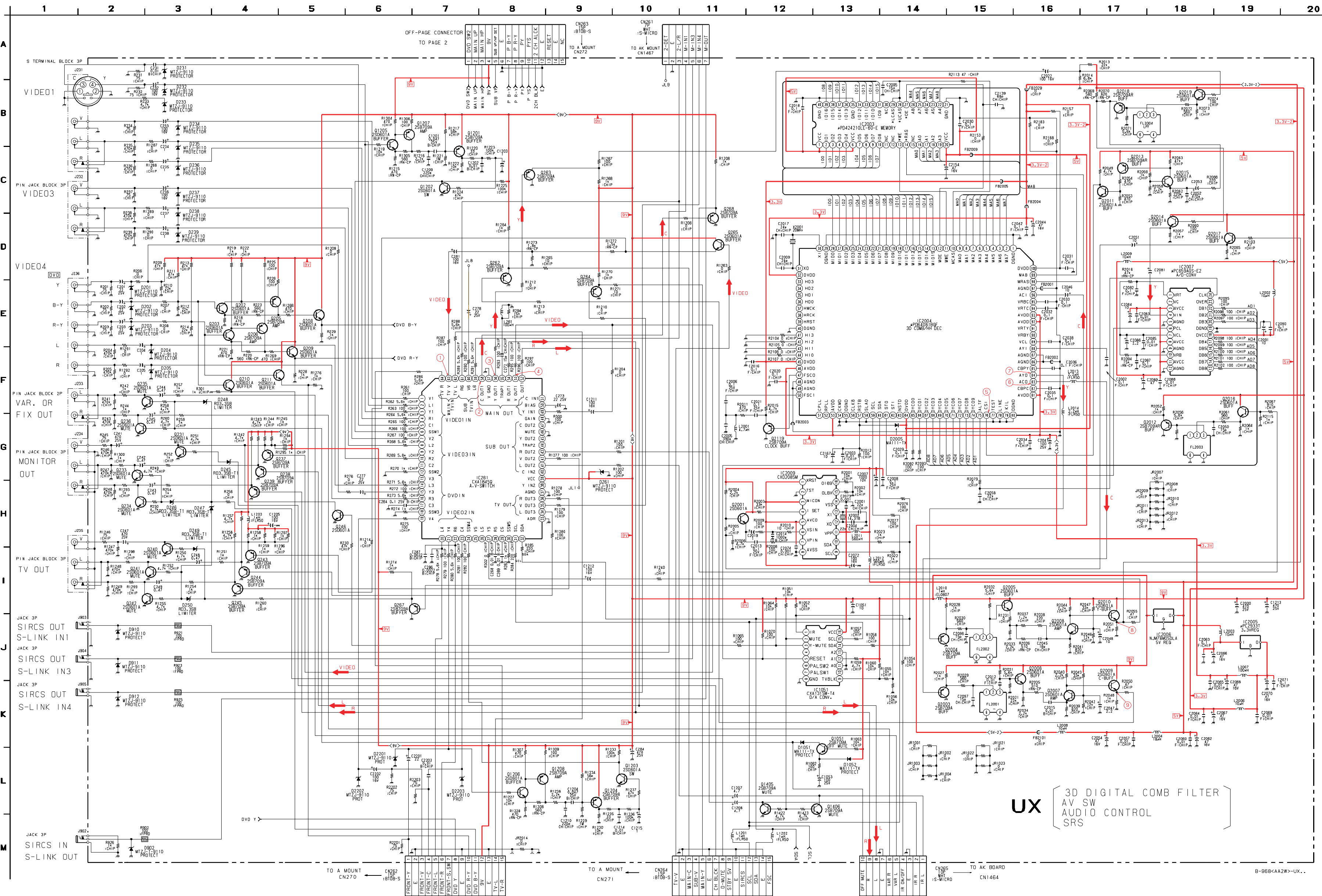
G [AC-RECT, DC-DC CONV, LOW B REG]





KV-32FS10/32FV15/32XBR250/34FV10/34FV15/34FV15C/34FX250C/34FV15K
34FV15T/36FS10/36FV15/36XBR250/38FX250/38FX250C/38FX250T/38FV15K

UX MAIN BOARD SCHEMATIC DIAGRAM



UX (MAIN) BOARD IC VOLTAGE LIST

IC261														IC2006														19		GND	
pin	volt	30	0	60	NC	6	5.0	36	1.7	24	1.5	53	3.3	81	3.3	pin	volt	20	2.0												
1	4.5	31	4.7	61	4.5	7	1.4	37	1.7	25	1.5	55	GND	83	1.7	IN	8.9	21	1.7												
2	4.5	32	4.7	62	4.5	8	1.6	38	1.7	26	1.7	56	NC	84	1.7	OUT	5.0	22	1.5												
3	4.5	33	GND	63	4.5	9	1.7	39	1.7	27	1.7	57	4.0	85	1.0	GND	GND	23	NC												
4	4.5	34	4.6	64	4.5	10	1.0	40	GND	28	1.7	58	GND	86	GND	IC2007	24	1.7													
5	4.5	35	4.2	IC1051	11	NC	IC2004	29	GND	59	4.7	87	GND	pin	volt	IC2009															
6	4.5	36	4.6	pin	volt	12	NC	pin	volt	30	1.5	60	4.7	88	2.2	1	3.3	pin	volt												
7	4.5	37	GND	1	8.9	13	2.9	1	GND	31	1.5	61	0.1	89	0	2	NC	1	4.8												
8	4.5	38	NC	2	8.9	14	0.5	2	1.5	32	3.3	62	NC	90	NC	3	5.0	2	GND												
9	NC	39	8.9	3	0.4	15	NC	3	1.5	33	NC	63	NC	91	NC	4	2.7	3	4.8												
10	4.5	40	NC	4	NC	16	1.5	4	1.5	34	NC	64	3.3	92	3.3	5	GND	4	1.4												
11	NC	41	4.6	5	6.1	17	1.5	5	1.5	35	NC	65	0	93	3.3	6	0.1	5	4.8												
12	0	42	4.4	6	NC	18	1.5	6	1.5	36	NC	66	0	94	3.3	7	2.5	6	1.8												
13	NC	43	4.4	7	NC	19	1.5	7	1.5	37	NC	67	1.9	95	3.3	8	5.0	7	1.6												
14	4.5	44	NC	8	GND	20	5.0	8	1.5	38	NC	68	1.9	96	0	9	GND	8	GND												
15	4.5	45	NC	9	6.0	21	GND	9	1.5	39	NC	69	1.9	97	0	10	2.3	9	4.7												
16	4.5	46	GND	10	NC	22	1.7	10	1.0	40	GND	70	1.8	98	0.5	11	5.0	10	4.7												
17	4.5	47	NC	11	GND	23	1.5	11	2.8	41	0	71	1.6	99	1.7	12	GND	11	4.8												
18	0	48	GND	12	8.9	24	1.6	12	2.5	42	0	72	2.0	100	3.3	13	2.0	12	2.5												
19	4.5	49	4.5	13	GND	25	1.6	13	1.3	43	0	73	1.7	IC2005	14	2.0	13	2.4													
20	4.5	50	4.5	14	4.7	26	1.6	14	1.4	44	0	74	1.5	pin	volt	15	2.1	14	GND												
21	4.5	51	NC	15	4.7	27	2.5	15	1.3	45	3.3	75	1.7	IN	5.0	16	2.0	15	0												
22	4.5	52	4.6	16	8.9	28	1.0	16	1.6	46	3.3	76	4.4	OUT	3.3	17	1.7	16	4.8												
23	4.5	53	4.4	IC2003	29	1.0	17	1.6	47	1.9	77	GND	GND	GND	GND	18	5.0														
24	4.5	54	4.6	pin	volt	30	NC	18	1.7	48	GND	78	GND																		
25	NC	55	4.4	17	4.9	29	1.7	19	1.7	49	GND	79	GND																		
26	NC	56	4.4	2	1.7	32	1.5	20	1.7	50	1.5	80	GND																		
27	4.5	57	GND	3	1.7	33	1.9	21	1.0	51	NC																				
28	4.5	58	4.4	4	1.7	34	1.6	22	1.6	52	NC																				

UX (MAIN) BOARD TRANSISTOR

	B	C	E		B	C	E
Q202	2.6	7.9	2.0	Q1051	8.9	-0.1	8.8
Q203	2.6	7.9	2.0	Q1201	8.4	0	8.9
Q205	7.9	3.9	8.5	Q1202	0	4.4	GND
Q206	7.9	3.9	8.6	Q1203	0	4.4	GND
Q208	3.9	8.9	3.2	Q1204	8.4	0	8.9
Q209	3.9	8.9	3.2	Q1205	4.4	8.9	3.9
Q210	2.6	8.9	2.0	Q1206	4.4	8.9	3.8
Q211	2.6	8.9	2.0	Q1207	8.9	3.8	9.0
Q212	4.4	8.9	0	Q1208	8.9	3.8	9.0
Q231	0	5.1	GND	Q1405	8.9	0	GND
Q233	0.2	0	GND	Q1406	8.9	0	GND
Q234	0.2	0	GND	Q2001	3.3	4.9	2.7
Q235	0.1	0	GND	Q2003	1.7	GND	2.4
Q236	0.1	0	GND	Q2004	1.65	GND	2.3
Q237	4.4	GND	5.1	Q2005	2.8	8.3	2.2
Q238	4.6	GND	5.2	Q2006	7.0	8.9	6.4
Q239	4.6	GND	5.2	Q2007	2.2	4.4	1.6
Q240	0.7	0.2	GND	Q2008	2.1	5.2	1.5
Q241	0.6	0	GND	Q2009	4.4	8.9	3.8
Q242	0.6	0	GND	Q2010	5.2	8.3	4.3
Q243	4.1	GND	0.2	Q2011	0.1	4.4	GND
Q244	4.6	GND	5.2	Q2012	1.8	GND	2.5
Q245	4.6	GND	5.2	Q2013	4.9	0.5	5.0
Q246	0.4	5.1	GND	Q2014	5.2	8.3	4.6
Q262	3.8	GND	4.5	Q2015	3.4	4.9	3.6
Q263	4.5	GND	5.1	Q2016	2.6	8.3	2.0
Q264	4.2	GND	4.8	Q2017	4.6	8.3	3.9
Q265	4.7	8.9	4.1	Q2018	1.2	GND	1.9
Q267	3.1	GND	3.7	Q2019	1.9	0	2.3
Q268	4.5	GND	5.1	Q2119	1.9	GND	2.3

All voltages are in V

UX (MAIN) BOARD WAVEFORMS

