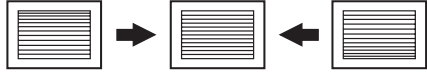


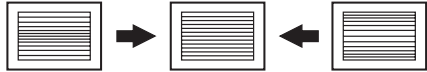
V LINEARITY (VLIN), V CORRECTION (VSCO), PIN AMP (PAMP) AND TRAPEZIUM (TRAP) ADJUSTMENTS

1. Input a cross-hatch signal.
2. Set to Service adjustment Mode.
3. Select VLIN, VSCO, PAMP, and TRAP with [1] and [4].
4. Adjust with [3] and [6] for the best picture.
5. Write the memory by Pressing [MUTING] then [ENTER].

V LINEARITY (VLIN)



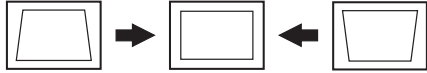
VS CORRECTION (VSCO)



PIN AMP (PAMP)



TRAPEZIUM (TRAP)

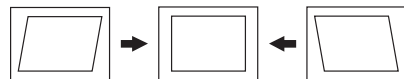


V ANGLE (VANG), V BOW (VBOW), UPPER PIN (UCPN) AND LOW PIN (LCPN) ADJUSTMENTS

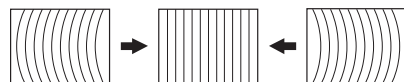
1. Input a cross hatch signal.
2. Set to Service Adjustment Mode.
3. Select VVANG, VBOW, UCPN, and LCPN with [1] and [4].
4. Adjust with [3] and [6] for the best picture.
5. Write the memory by Pressing [MUTING] then [ENTER].

Please use VANG data from 3~12. Adjust from 3 to 12 only.

V ANGLE (VANG)



V BOW (VBOW)



UPPER PIN (UCPN)

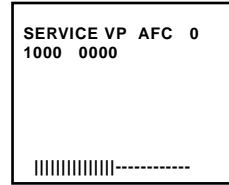


LOW PIN (LCPN)



OSD POSITION ADJUSTMENT (DISP)

1. Input a color bar signal.
2. Set to Service adjustment Mode.
3. Select DISP with [1] and [4].
4. Adjust with [3] and [6] for the bar center.
5. Write into the memory by pressing [MUTING] then [ENTER].



ROTATION COIL ADJUSTMENT

1. Input a monoscope signal.
2. Push Menu button on the Remote (RM-Y171).
3. Select "Set Up" Mode.
4. Select "Tilt Correction". Confirm that number (0) color changes to red.
5. Push ↑ (+) on the Remote (RM-Y171). Confirm that number increases up to +5 and picture rotates clockwise.
6. Push ↓ (-) on the Remote (RM-Y171). Confirm that number decreases up to -5 and picture rotates counterclockwise.
7. Push ↑ (+) on the Remote (RM-Y171). Return to 0.

SET-UP

☐ Channel Set-up

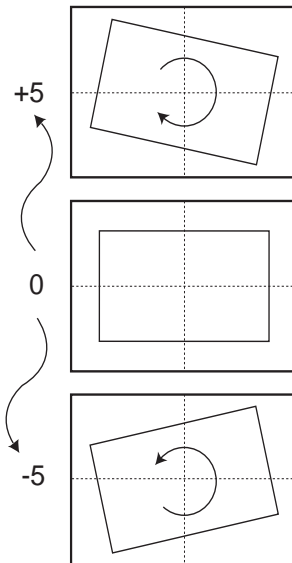
☐ Favorite Channel

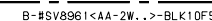
☐ Video Label

☐ Language: English

☒ Tilt Correction : 0

○ Menu



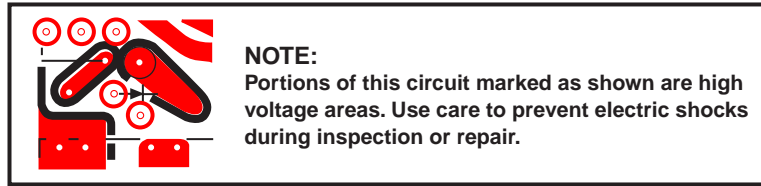
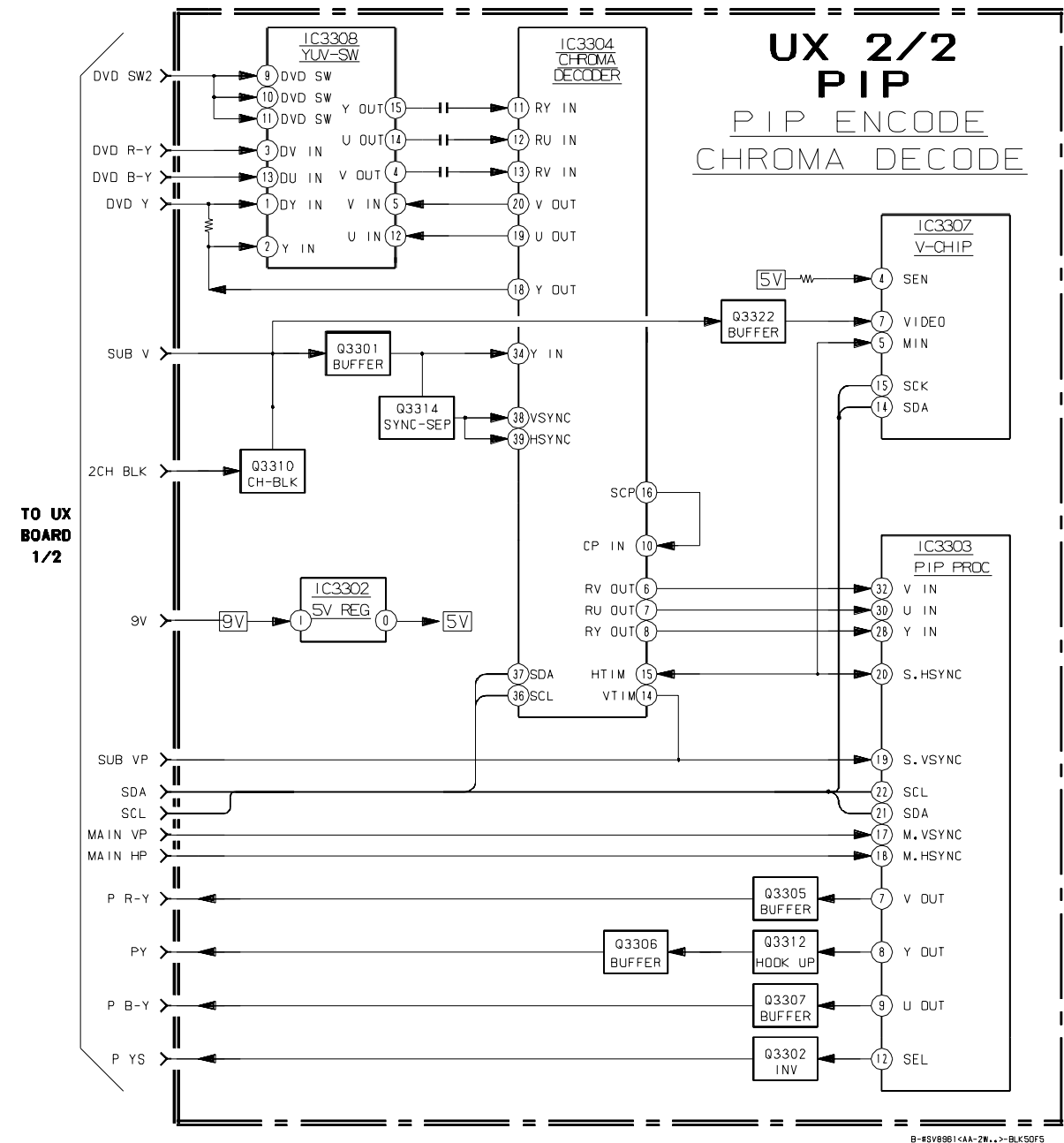




KV-32FS10/32FV15/32XBR250/34FV10/34FV15/34FV15C/34FX250C/34FV15K
34FV15T/36FS10/36FV15/36XBR250/38FX250/38FX250C/38FX250T/38FV15K

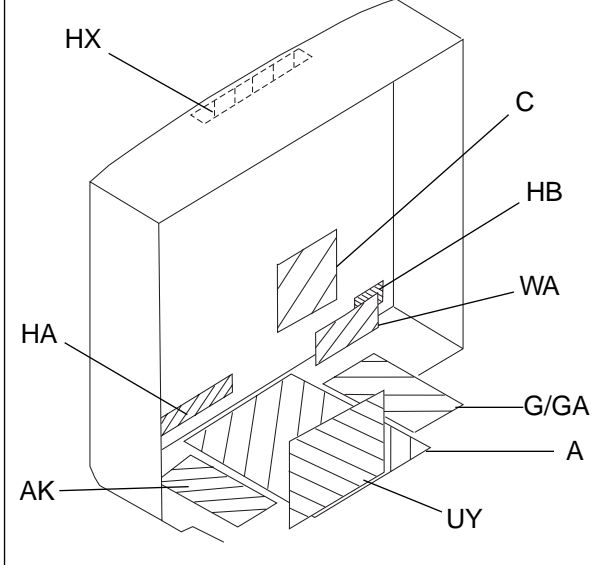
6-5 BLOCK DIAGRAM (5/5)

(KV-32XBR250/34FX250C/36XBR250/38FX250/38FX250C/38FX250T)

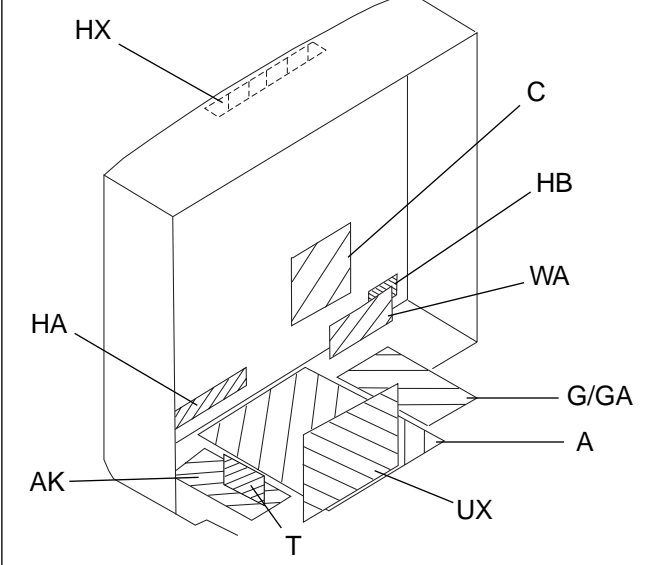


6-6. CIRCUIT BOARDS LOCATION

ALL MODELS (Except KV-32XBR250/34FX250C
36XBR250/38FX250/38FX250C/38FX250T)



(KV-32XBR250/34FX250C/36XBR250
38FX250/38FX250C/38FX250T ONLY)



6-7. PRINTED WIRING BOARDS AND SCHEMATIC DIAGRAMS

- All capacitors are in μF unless otherwise noted. pF : μF 50V or less are not indicated except for electrolytics and tantalums.
- All electrolytics are in 50V unless otherwise specified.
- All resistors are in ohms.
K Ω =1000 Ω , M Ω =1000K Ω
- Indication of resistance, which does not have one for rating electrical power, is as follows:
Pitch : 5mm
Rating electrical power : $1/4\text{W}$

- $1/4\text{W}$ in resistance, $1/8\text{W}$ and $1/4\text{W}$ in chip resistance.
- : nonflammable resistor.
- : fusible resistor.
- : internal component.
- : panel designation and adjustment for repair.
- All variable and adjustable resistors have characteristic curve B, unless otherwise noted.
- The components identified by in this basic schematic diagram have been carefully factory-selected for each set in order to satisfy regulations regarding X-ray radiation.
- Should replacement be required, replace only with the value originally used.
- When replacing components identified by , make the necessary adjustments indicated. If results do not meet the specified value, change the component identified by and repeat the adjustment until the specified value is achieved. (Refer to R530 and R531 adjustment on Page 21.)
- When replacing the part in below table, be sure to perform the related adjustment.
- Readings are taken with a color-bar signal input.
- Readings are taken with a 10M Ω digital multimeter.
- Voltages are DC with respect to ground unless otherwise noted.
- Voltage variations may be noted due to normal production tolerances.

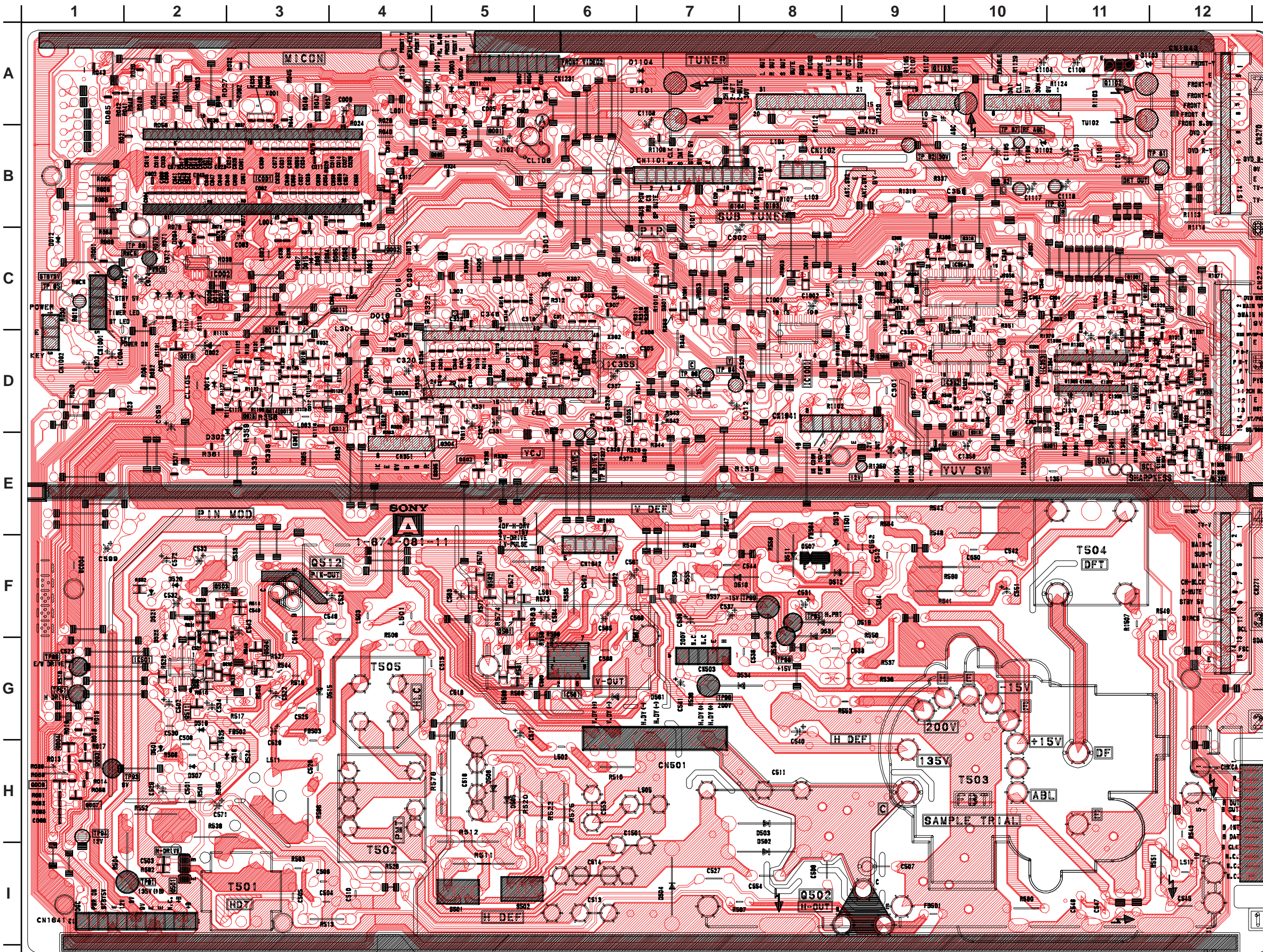
Part replaced ()	Adjustment ()
IC355, IC501, D302, D519, D520, D521, C531, C532, Q301, R356, R359, R361, R387, R529, R530, R531, R532, R533, R550, T503.....A BOARD	R530, R531
IC643, R661.....G BOARD	
IC6003, R6088.....GA BOARD	

- All voltages are in V.
S : Measurement impossibility.
- : B-line.
- : B-line.
- (Actual measured value may be different).
- : signal path. (RF)
- Circled numbers are waveform references.
- Reference information
- RESISTOR : RN METAL FILM
: RC SOLID
: FPRD NONFLAMMABLE CARBON
: FUSE NONFLAMMABLE FUSIBLE
: RW NONFLAMMABLE WIREWOUND
: RS NONFLAMMABLE METAL OXIDE
: RB NONFLAMMABLE CEMENT
: \times ADJUSTMENT RESISTOR
COIL : LF-8L MICRO INDUCTOR
CAPACITOR : TA TANTALUM
: PS STYROL
: PP POLYPROPYLENE
: PT MYLAR
: MPS METALIZED POLYESTER
: MPP METALIZED POLYPROPYLENE
: ALB BIPOLAR
: ALT HIGH TEMPERATURE
: ALR HIGH RIPPLE

The symbol display is on the component side.
The components identified by shading and mark are critical for safety. Replace only with part number specified.
The symbol indicates a fast operating fuse.
Replace only with fuse of same rating as marked.

Les composants identifiés par un tréma et une marque sont critiques pour la sécurité. Ne les remplacer que par une pièce portant le numéro spécifié.
Le symbole indique une fusible à action rapide. Doit être remplacé par une fusible de même valeur, comme marqué.

A [MICON, Y/C/J, TUNER, PIN-MOD, V-DEF, H-DEF]



A BOARD LOCATOR LIST

DIODE	IC
D001	A-5
D002	D-2
D003	A-5
D004	C-2
D01	A-5
D012	C-1
D013	C-5
D014	D-3
D015	C-3
D016	D-4
D018	D-4
D019	C-8
D021	C-7
D302	E-3
D303	D-4
D368	C-7
D384	F-6
D388	C-6
D601	H-2
D602	I-8
D603	I-8
D604	I-7
D605	I-6
D606	H-5
D607	H-2
D610	F-8
D611	F-9
D612	F-9
D613	F-9
D615	G-4
D616	H-2
D618	H-3
D619	G-9
D520	F-2
D521	F-2
D522	G-2
D523	H-3
D524	H-3
D530	G-8
D531	G-9
D534	G-8
D535	G-3
D536	G-3
D561	H-7
D1003	E-10
D1004	E-10
D101	A-7
D102	B-11
D103	A-12
D104	A-7
D1301	D-12
D1302	D-11
IC001	B-2
IC002	C-2
IC352	D-9
IC353	D-10
IC354	C-9
IC355	D-5
IC501	G-2
IC561	G-6
IC1001	D-8
TRANSISTOR	
Q001	A-5
Q002	C-4
Q003	H-1
Q004	H-1
Q005	B-5
Q006	H-1
Q007	I-1
Q010	D-3
Q011	D-3
Q012	D-3
Q013	D-3
Q014	D-3
Q015	D-3
Q016	D-2
Q017	A-5
Q103	B-8
Q104	B-8
Q301	E-3
Q303	E-7
Q304	E-5
Q305	E-5
Q306	E-5
Q307	C-6
Q310	E-4
Q311	E-4
Q314	E-9
Q351	E-10
Q359	E-12
Q361	D-10
Q362	E-11
Q364	E-12
Q369	D-11
Q370	D-11
Q501	I-2
Q502	J-9
Q503	G-3
Q504	G-3
Q507	F-9
Q511	H-2
Q512	F-3
Q561	G-6
Q562	F-5
Q1012	A-12
Q103	A-10
Q1301	D-11
Q1302	D-11
Q1303	E-12
Q1352	D-11
Q1353	D-11
Q1354	D-10