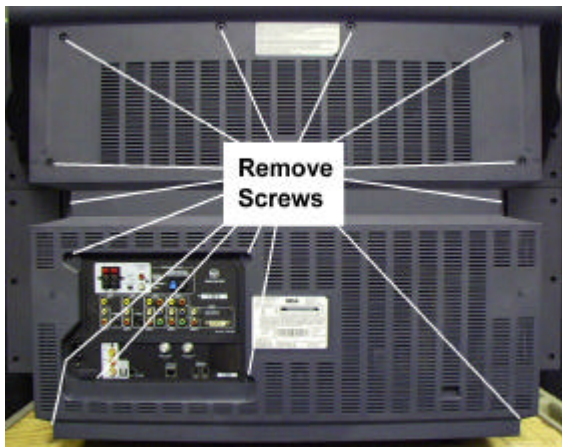


DISASSEMBLY

Lower Back Cover Removal

- 1. Remove 14 T20 screws on back-cover.
- 2. Pull back-cover straight back and remove.
- 3. Reassemble in reverse order.



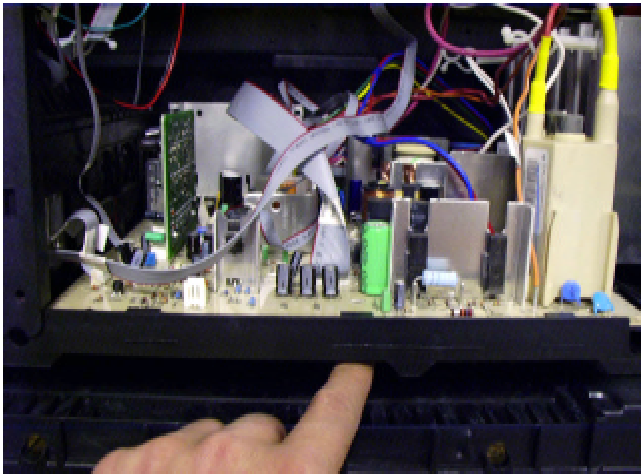
Back Cover



Back Cover Removed

Chassis Tray Assembly Release

- 1. With the back-cover removed, release all cable ties to allow chassis to be slid back.
- 2. Access the release lever on the bottom of chassis tray just right of center and push down slightly on the lever.
- 3. While pushing down on the release lever slide the chassis tray toward you about 1".
- 4. Grab each side of the chassis tray and lift up while sliding the chassis tray toward you. This will release the chassis from the guide rails.



Release Lever Under Tray

Subwoofer assembly removal

- 1. Remove Lower Back Cover.
- 2. Remove two (2) screws on subwoofer assembly.
- 3. Disconnect wire from subwoofer amp CBA to subwoofer assembly.
- 4. Slide subwoofer assembly out.
- 5. Reassemble in reverse order.

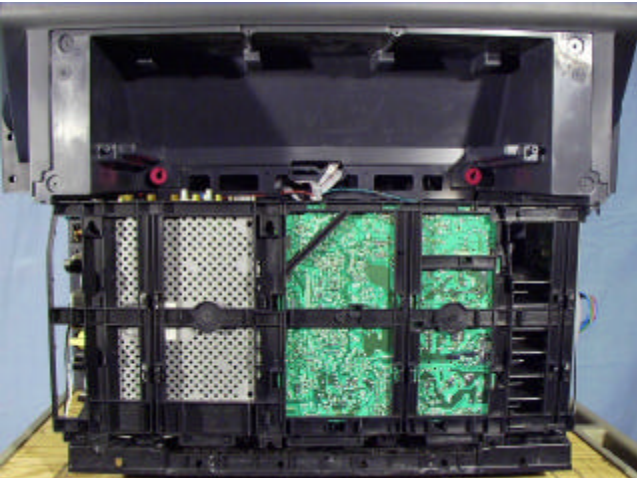


Screws Securing Subwoofer

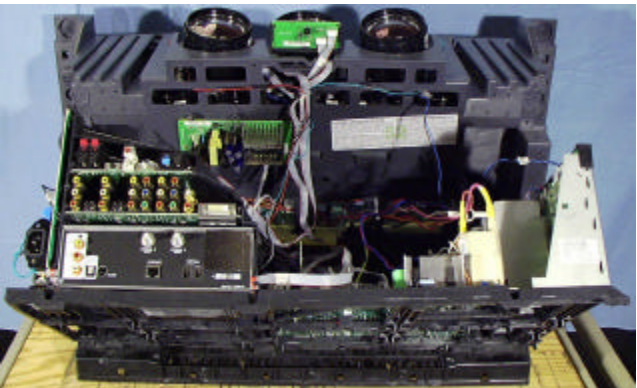
Service Position of Chassis

- 1. Remove back cover.
- 2. Remove Jack panel cover.
- 3. Remove Subwoofer assembly and release all cable ties.
- 4. Release chassis tray assembly.
- 5. With the chassis released from the guide rails, move the chassis tray to a vertical position so the bottom of the deflection board is exposed.

**NOTE:** Take care not to strain the cables as they could be damaged in the process. The back edge of the chassis assembly will sit between the cabinet, where the subwoofer assembly was.



Service Position With Top On



Service Position With Top Off

Speaker Grille Removal

- 1. Grasp sides of speaker grille and pull away from instrument.
  - 2. Reassemble in reverse order.
- Take care to keep assembly from bending and breaking while removing speaker grille.

FPA Assembly removal

- 1. With speaker grille removed, locate and remove the screws across the bottom of the cover. It is not necessary to remove the grounding screw on the bottom side of the cover (middle screw).
- 2. Remove screws from back of cabinet on each side. (Four total, two on left side and two on right side)
- 3. Unplug cables going to front AV in assembly and keyboard.

- 4. Remove ground wire (white).
  - 5. Reassemble in reverse order.
- To remove keyboard release tabs on each side of keyboard and slide keyboard out.

Speaker Removal

- 1. Remove Speaker Grille.
- 2. Remove screws holding lower trim and remove trim plate.
- 3. Remove access panel covering CRT's.
- 4. Disconnect speaker wires from audio CBA and route the wires to the front of the instrument.
- 5. Locate and remove two (2) screws with red grommets securing speaker assembly.
- 6. Slide out speaker assembly.
- 7. Reassemble in reverse order.

Protective Screen Assembly Removal

- 1. Remove speaker grille assembly.
- 2. Remove front panel cover.
- 3. Remove five (5) screws on each side of screen frame from the back.
- 4. Remove ten (10) screws from across the top on the back-side.
- 5. Remove two (2) Philips screws from under lower screen bracket.
- 6. Remove protective screen frame assembly
- 7. Reassemble in reverse order.



20 Screws Secure Protective Screen Frame



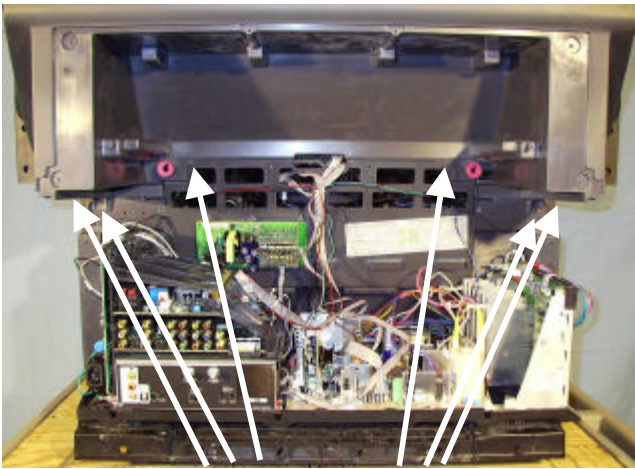
DISASSEMBLY

Screen Removal and Sensor Access

- 1. Remove speaker grille assembly.
  - 2. Remove front panel cover.
  - 3. Unplug sensor wire (blue & black wires).
  - 4. Remove protective screen assembly.
  - 5. Remove screws and brackets from top, left and right sides of screen
  - 6. Remove screen assembly by lifting out of bottom bracket.
  - 7. Reassemble in reverse order.
- With screen removed access to sensors is possible.

Top Cabinet Removal

- 1. Remove lower back cover
- 2. Remove FPA assembly
- 3. Locate and remove six (6) screws securing top cabinet to lower base unit.
- 4. Tilt top cabinet forward and lift upward separating top cabinet from lower base unit.
- 5. Reassemble in reverse order.



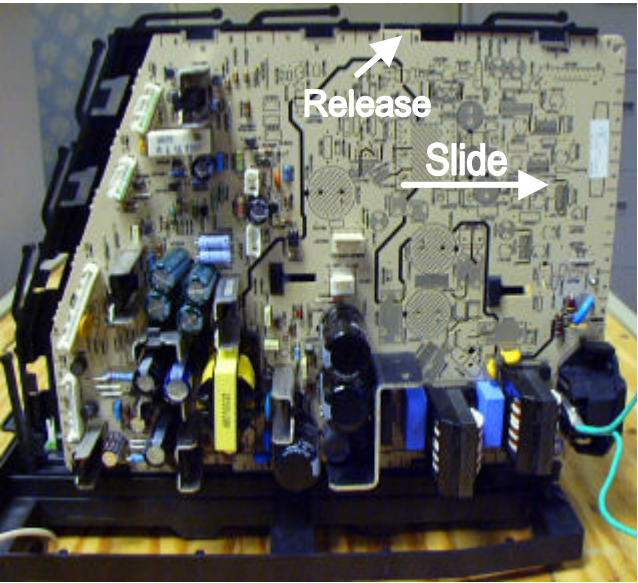
Remove Screws

Jack Panel Cover Removal

- 1. Remove Lower Back Cover.
- 2. Remove 11 T10 screws from cover.
- 3. Release clips at top left and bottom right.
- 4. Slide cover off.
- 5. Reassemble in reverse order.

AC In / Power Supply Removal

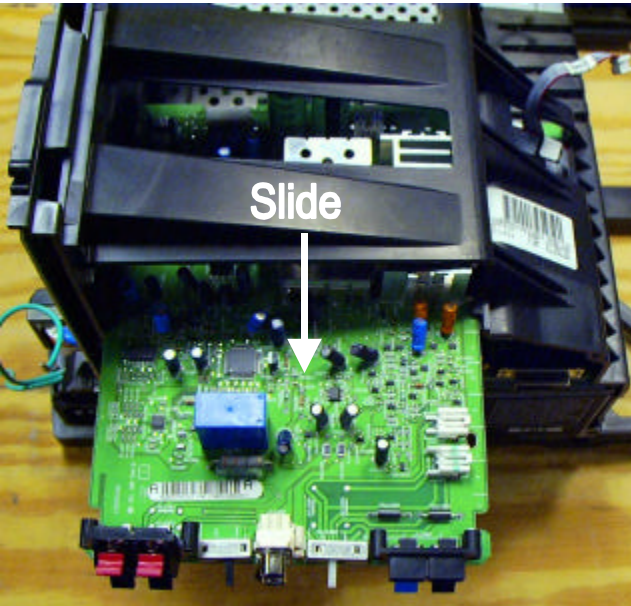
- 1. Remove Lower Back Cover.
- 2. Remove all cables to AC in /power supply CBA
- 3. Release retaining clip on top edge, between OO and PP, and slide the AC in / power supply CBA toward the back until it stops.
- 4. Pull AC in / power supply CBA away from bracket and lift out of bottom rail.
- 5. Reassemble in reverse order.



AC In Power CBA

Audio CBA Removal

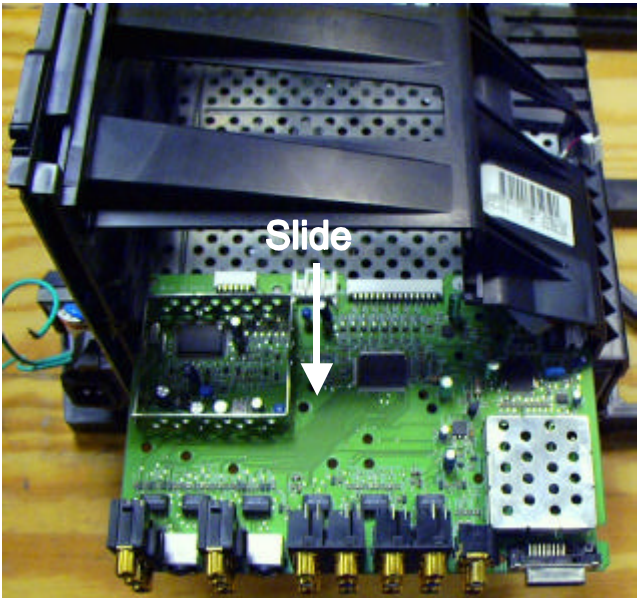
- 1. Remove Lower Back Cover and Jack Panel Cover.
- 2. With Jack panel cover removed, disconnect speaker wires (J11901 and J11902).
- 3. Disconnect cables from back of Audio CBA.
- 4. Slide Audio CBA out of tray. (see picture)
- 5. Reassemble in reverse order.



Audio CBA

AV In CBA Removal

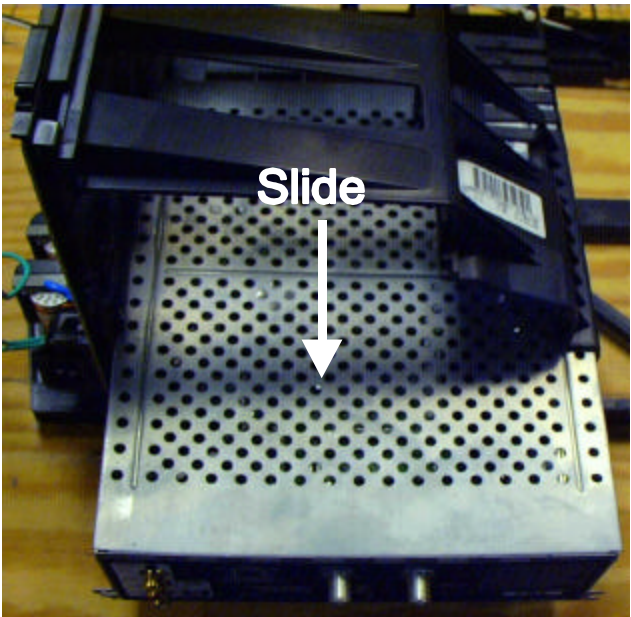
- 1. Remove Lower Back Cover and Jack Panel Cover.
- 2. Disconnect cables from back and right side of AV In CBA.
- 3. Slide AV In CBA out. (see picture)
- 4. Reassemble in reverse order.



A/V In CBA

DM2 Removal

- 1. Remove Lower Back Cover and Jack Panel Cover.
- 2. Disconnect all cables going to the DM2 module.
- 3. Slide out the DM2. (see picture)
- 4. Reassemble in reverse order.



DM2 Removal

CRT Assembly Removal, Focus/Screen Assembly/HV Splitter Assembly Replacement

- 1. Remove Cabinet Front Assembly.
- 2. Remove Screen Assembly.
- 3. Remove Kine Drive PCB's from CRT.
- 4. Remove IR PCB from holder located on top of CRT Assembly.
- 5. Disconnect Convergence Yoke Cables from Convergence Amp PCB and Deflection Yoke Cables from Convergence Adapter PCB. Disconnect SVM cables and CRT ground cables from each Kine Drive PCB.
- 6. Remove Anode Lead from HV Splitter (Lead from IHVT to HV Splitter). **NOTE:** Push in slightly, then twist and pull to remove anode lead. If HV Splitter Assembly needs to be replaced, remove Anode Leads to each CRT. Disconnect Ground lead. Remove ¼ inch screw securing assembly to bracket.
- 7. Remove ¼ inch screw securing Focus/Screen Assembly to CRT Frame.
- 8. Remove four (4) T-20 screws securing CRT assembly to Cabinet Frame. Slide CRT Assembly out to remove from cabinet. (It may be necessary to remove the Speaker Assemblies).
- 9. Reinstall in reverse order.

**Note:** Lead Dress is critical to the operation of the instrument. Care should be taken to dress all leads to their original positions. See section on Critical Lead Dress.