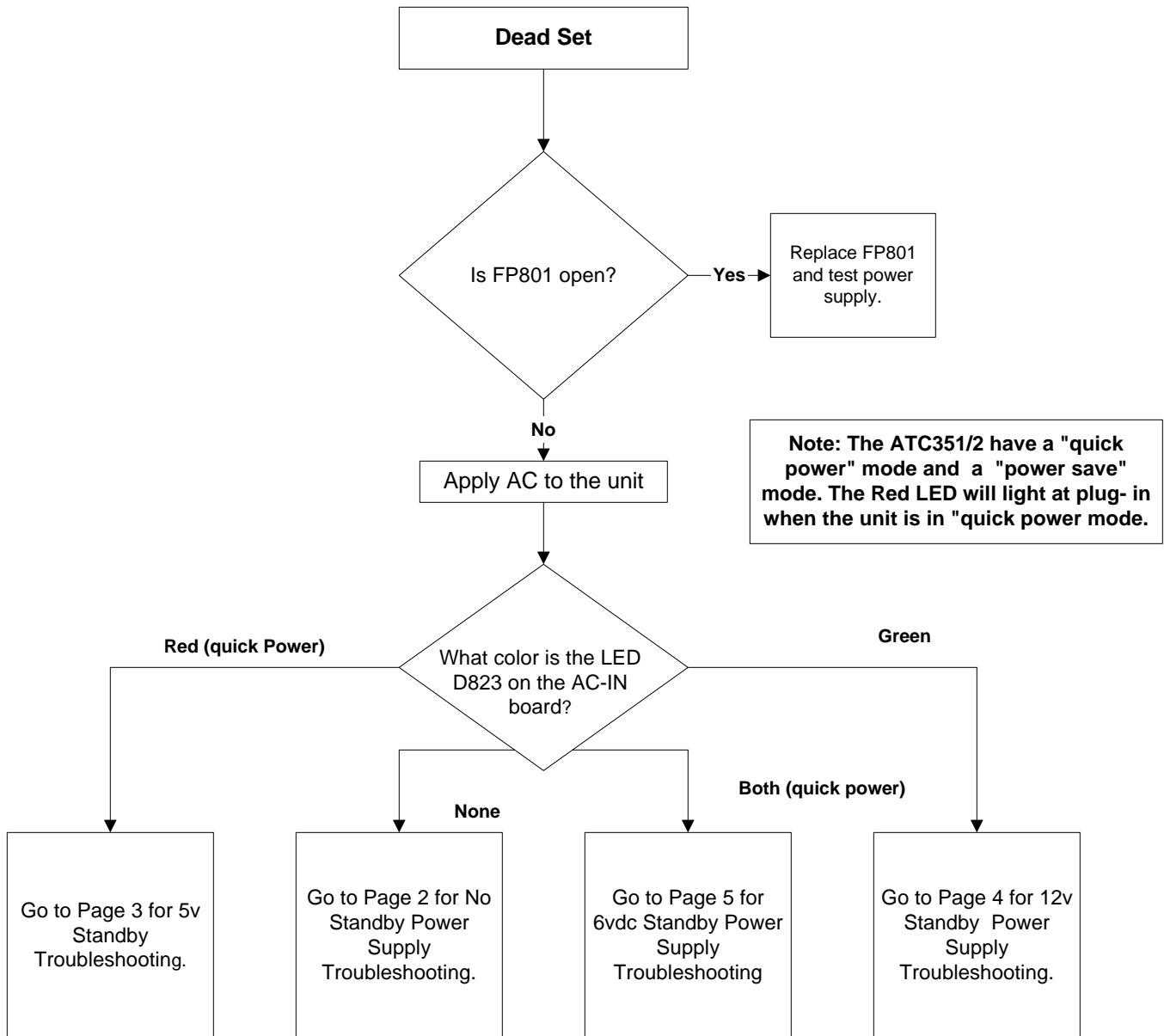


# **ATC351/2 Troubleshooting Flowcharts**

## **Index**

<b>Page</b>	<b>Title</b>
<b>1</b>	<b>Dead Set</b>
<b>2</b>	<b>No Standby Voltages</b>
<b>3</b>	<b>No 5vdc Standby</b>
<b>4</b>	<b>No 12vdc Standby</b>
<b>5</b>	<b>No 6vdc Standby</b>
<b>6</b>	<b>Will Not Turn On - No 12vdc Switched</b>
<b>7- 8</b>	<b>No Video or Picture</b>

## ATC351/2 Troubleshooting Flowcharts



# ATC351/2 Troubleshooting Flowcharts

## No Standby Voltages

Apply AC to the unit.

Check for 160vdc at D824.  
Is this voltage present?

No

Check for shorted D824. If these test ok, check IC801. If these test ok, check coils T801, T802, and T803 and fuse FP801.

Yes

Press the power button.

Is there 160vdc  
present at D801?

No

Go to Page 4 for  
12vdc Standby  
Troubleshooting

Yes

Verify operation of  
12vdc Standby  
power supply.

160vdc at pin 8  
of IC801?

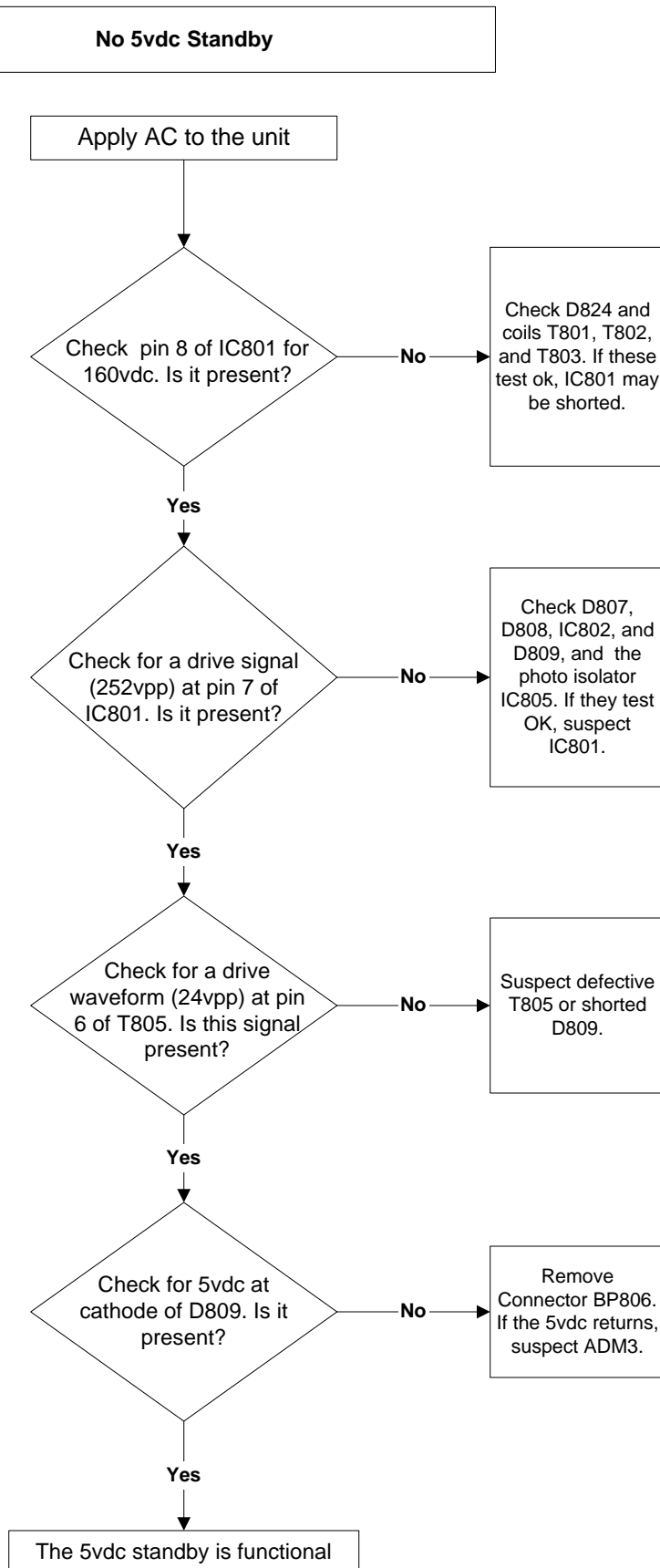
No

Check for open  
trace between  
D824 and  
IC801

Yes

Go to Page 3 for  
5vdc Standby  
Troubleshooting.

## ATC351/2 Troubleshooting Flowcharts

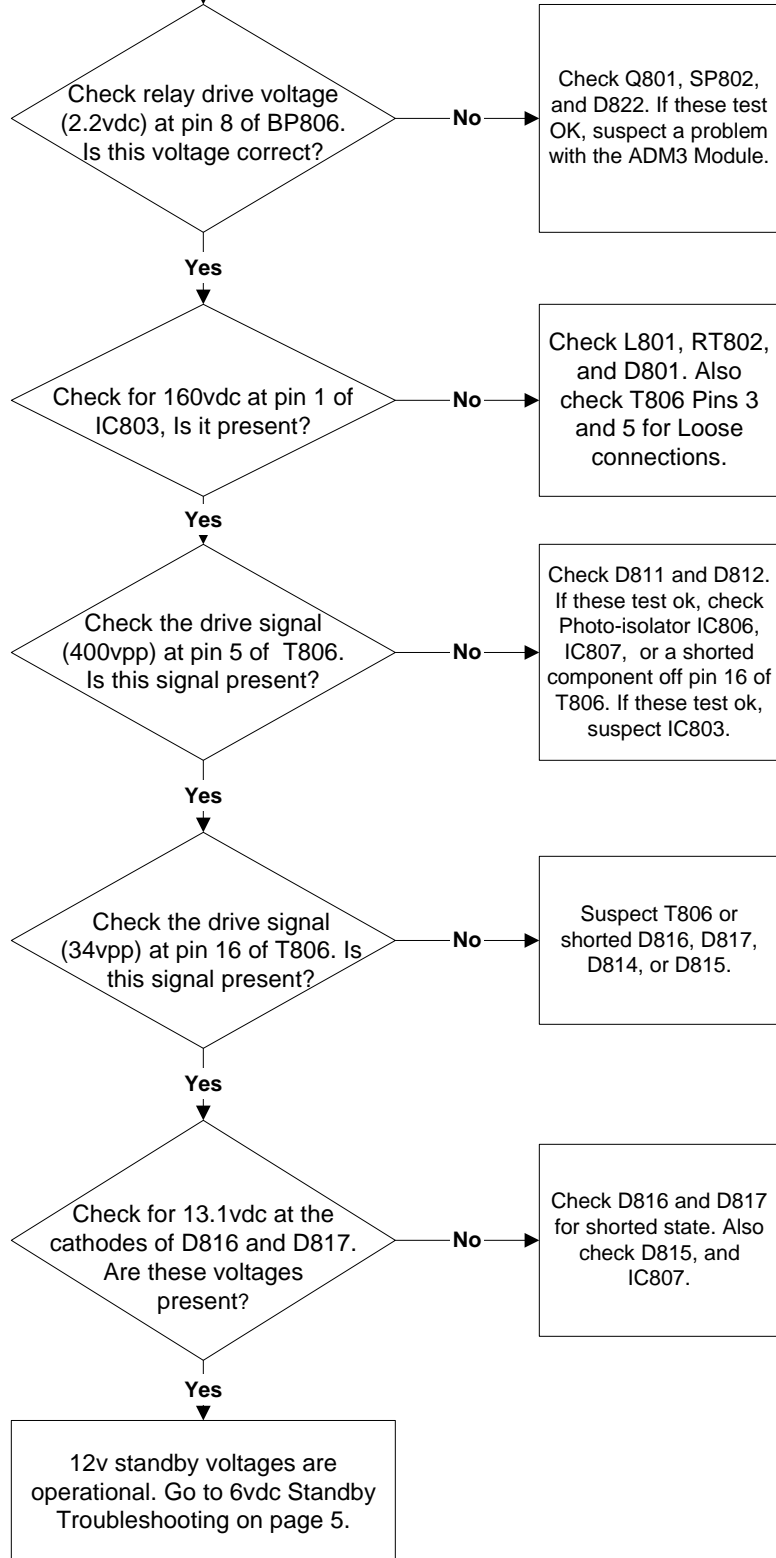


# ATC351/2 Troubleshooting Flowcharts

## No 12vdc Standby

Apply AC to the unit . If the unit is in "Quick start" mode, the 12vdc Standby should run when AC is applied. If the unit is in "Power Save" mode, you will need to press the power button to continue.

**Note:** The ATC351/2 have a "quick power" mode and a "power save" mode. The Red LED will light at plug-in when the unit is in "quick power" mode.



## ATC351/2 Troubleshooting Flowcharts

### No 6vdc Standby

Apply AC to the unit and press the power button.

**Note:** The ATC351/2 have a "quick power" mode and a "power save" mode. The Red LED will light at plug-in when the unit is in "quick power mode."

Check the input voltage (13.2vdc) at pin 8 of IC809. Is it correct?

No

Check D817 and L811. If these check ok, test C857 and C848.

Yes

Check the output voltage (6.2vdc) at pin 1 of IC809. Is it correct?

No

Check pin 6 (Vref) 3.3vdc, IC809, If it tests ok, check components off pin 4 1.2vdc IC809. If they test ok, suspect IC809

Yes

Check pin 7 of BP806 (6.2vdc) is this voltage present?

No

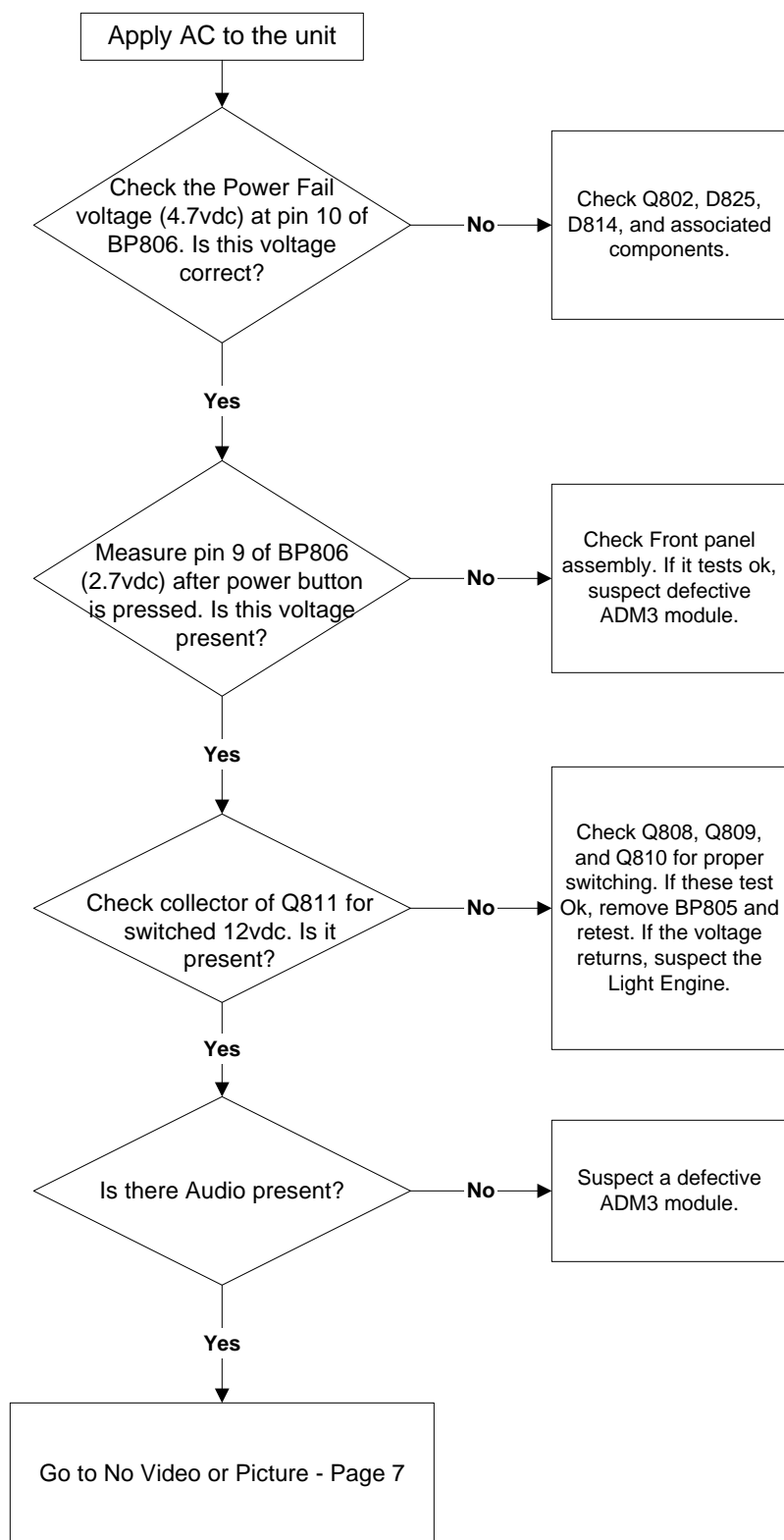
Remove connector BP806 and measure pin 7 on the AC-in board. If the voltage is present, suspect the ADM3 module. IF still missing, check L812, l806, C828, and C861.

Yes

The 6vdc Standby is operational.

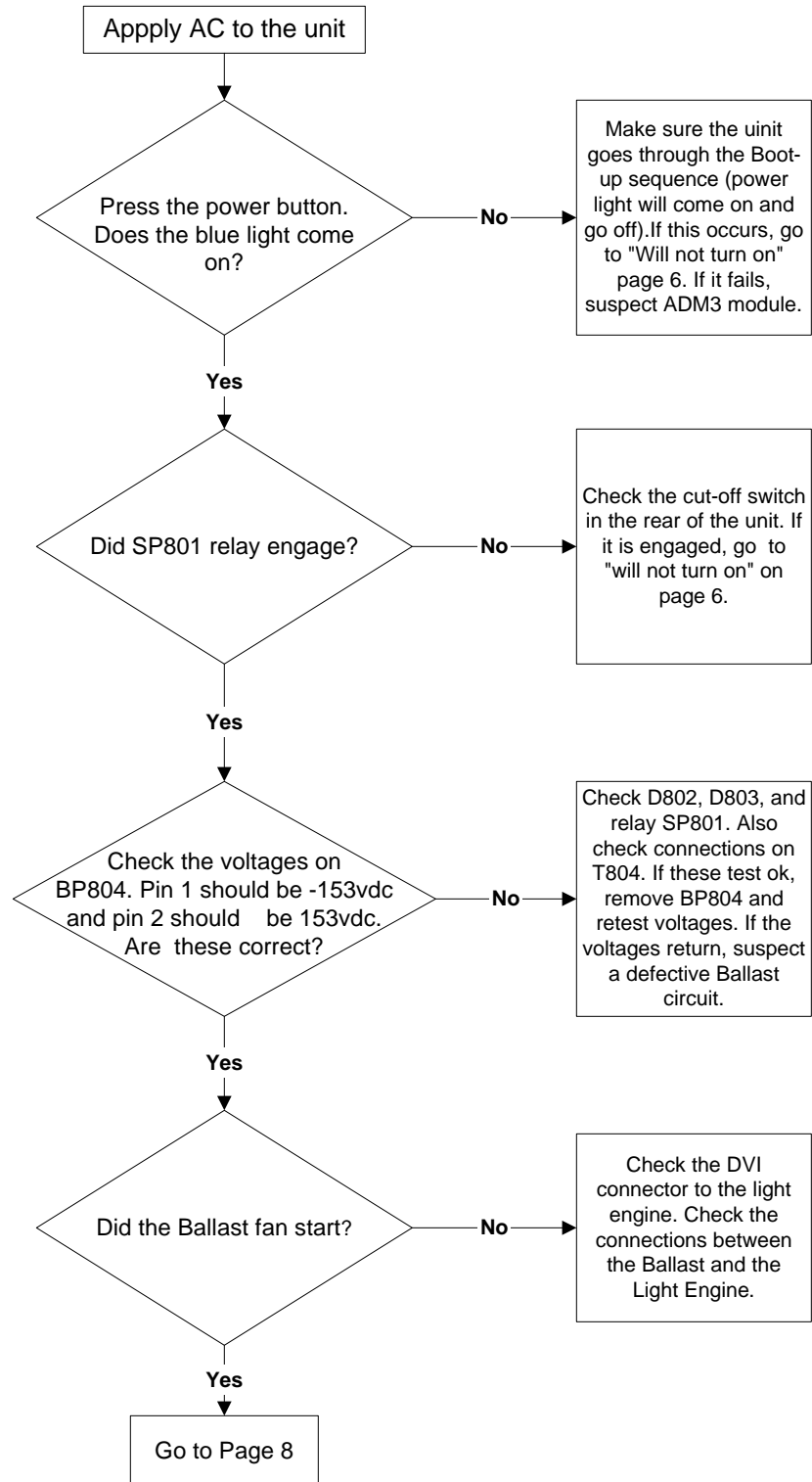
## ATC351/2 Troubleshooting Flowcharts

### Will not turn on - No 12vdc Switched



## ATC351/2 Troubleshooting Flowcharts

### No Video or Picture





# ATC351/2 Troubleshooting Flowcharts

## No Video or Picture (Continued)

