

ATC351/2 Cabinet Disassembly

Index

Page

- 1. Back Cover Removal**
- 2. ADM3 Cover Removal**
- 3. Chassis Service Position**
- 4. AC-IN Board Removal**
- 5. ADM3 Assembly Removal**
- 6. Ballast Housing Removal**
- 7. Lamp Housing Removal**
- 8. Light Engine Removal**
- 9. Front Screen Removal**

ATC351/2 Disassembly

Back Cover Removal

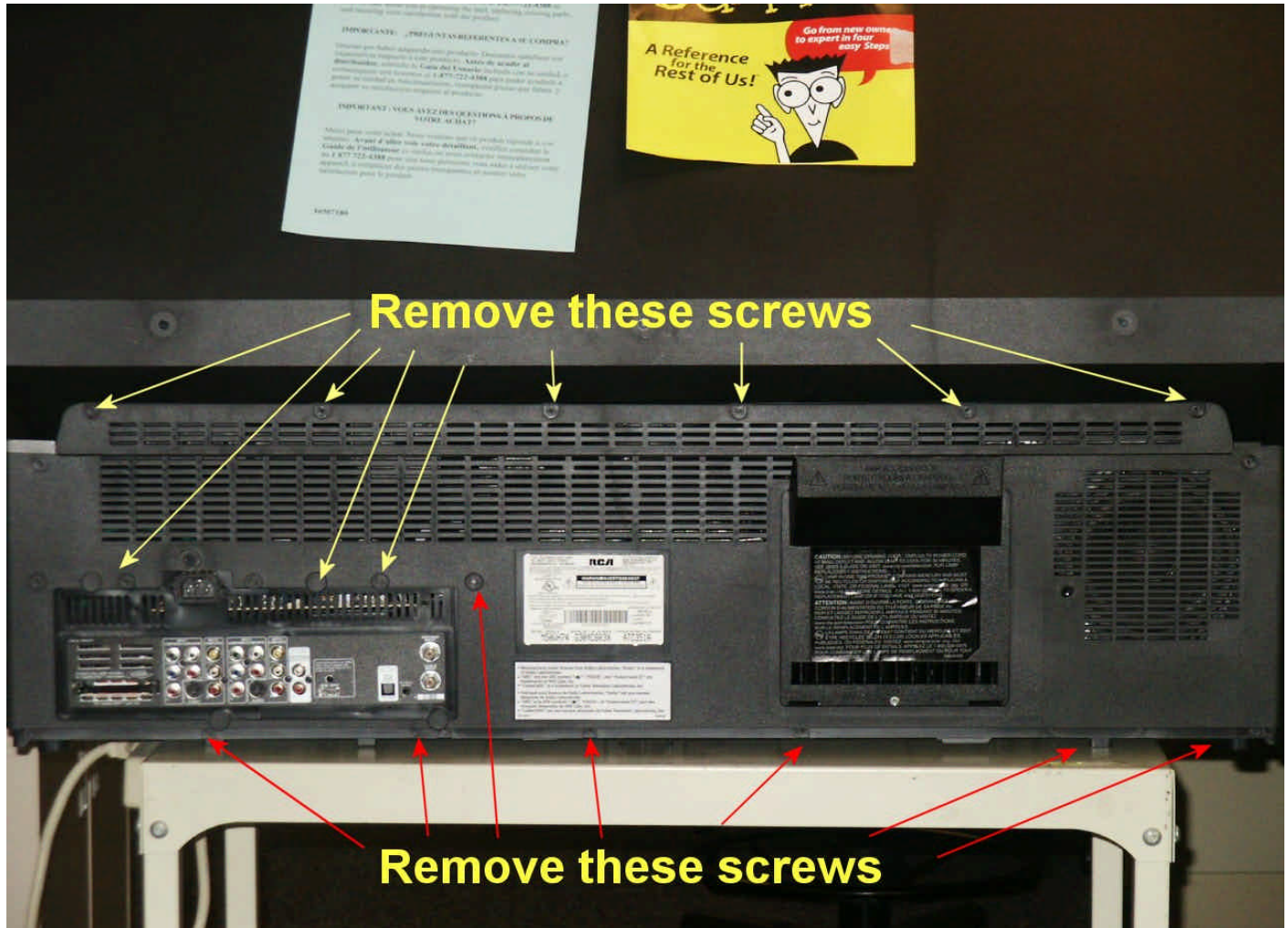


Fig 1

Remove all the screws as shown in Fig 1. Slide the back toward the rear of the unit and place away from the unit. This will allow access to the ADM3 and AC-IN modules, along with the Light Engine and Ballast circuit.

ATC351/2 Disassembly

ADM3 Cover Removal

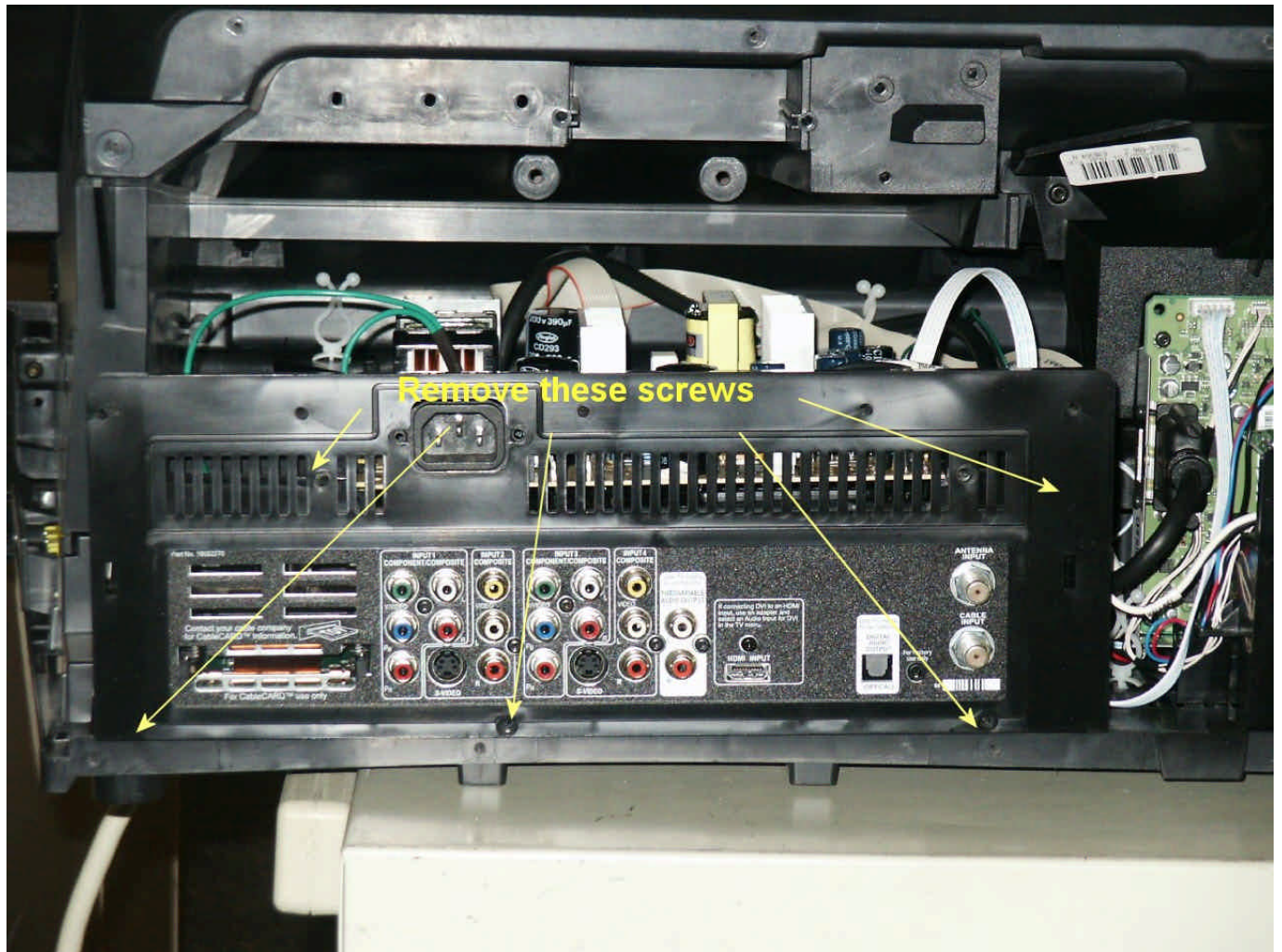


Fig 2

Remove the screws and set aside the ADM3 cover (see Fig 2).

ATC351/2 Disassembly

Service Position

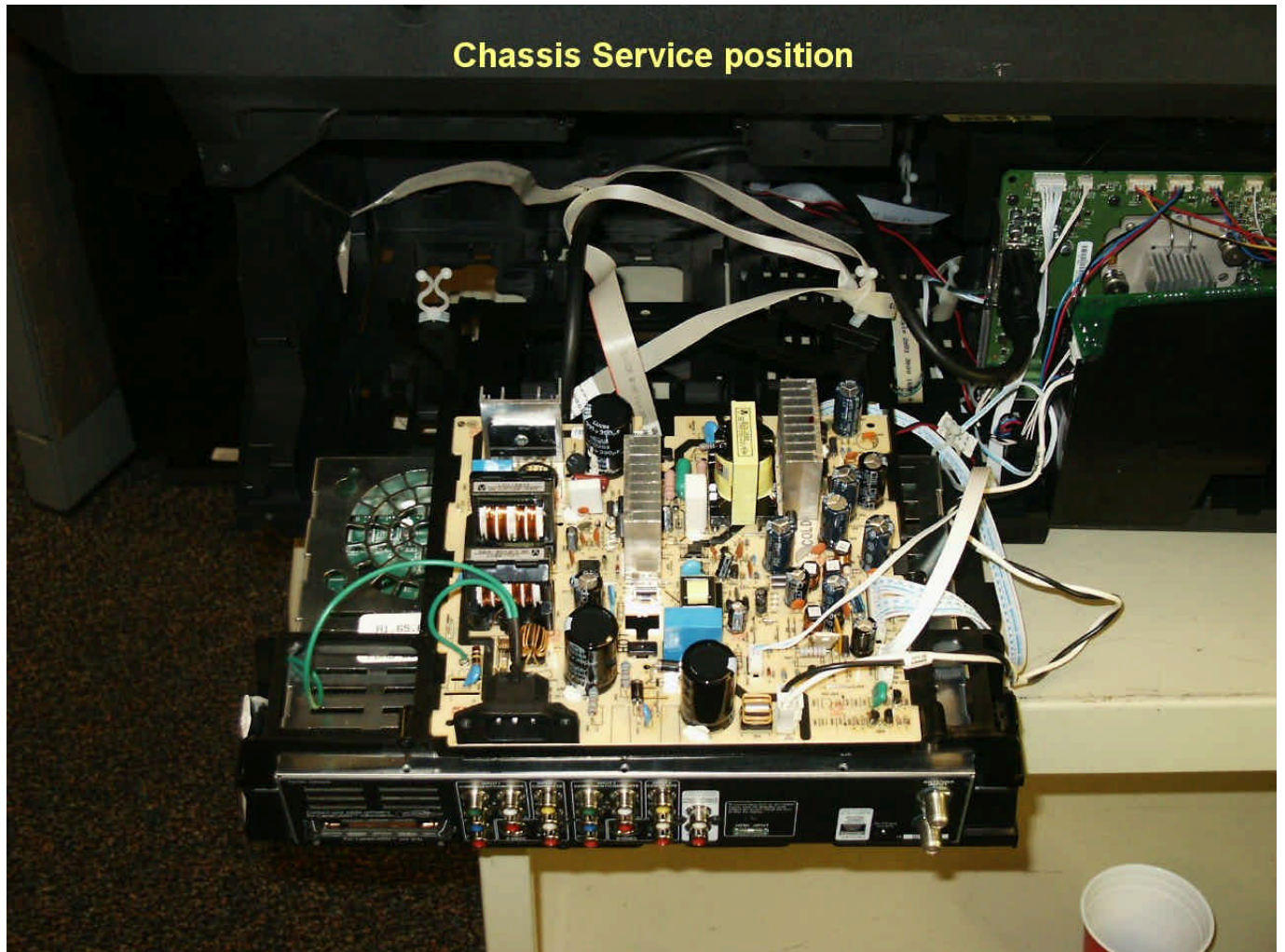


Figure 3

Slide the ADM3 Tray Assembly toward the rear of the unit for approximately 1 inch and lift the tray upwards to release from the bottom of the cabinet. The tray can be positioned to access components and test points on the assembly.

ATC351/2 Disassembly

AC-IN Board Removal

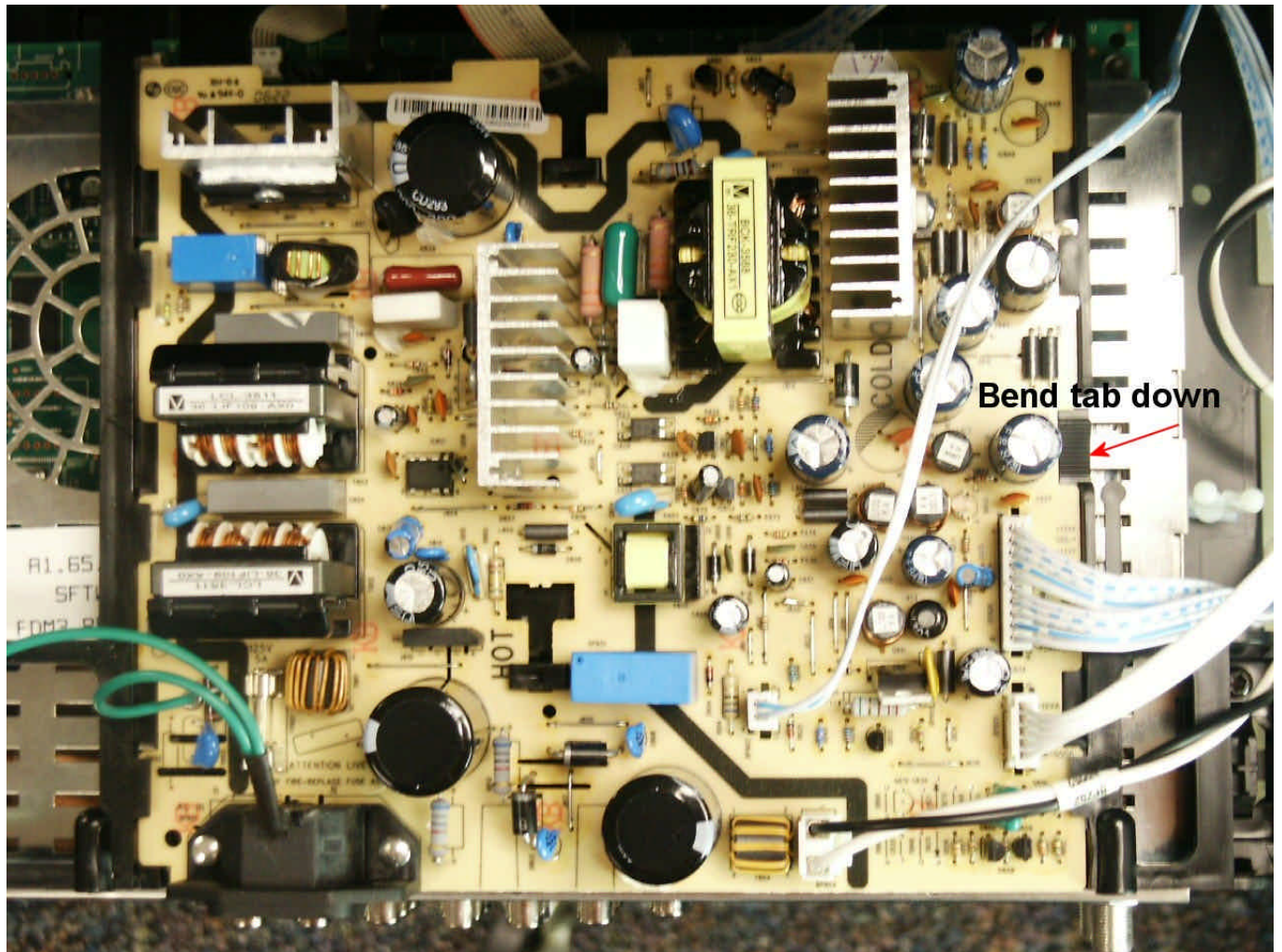


Fig 4

Locate the plastic tab on the right side (Fig 4) of the AC-IN board housing. Press the tab down and slide the board toward you to gain access to the bottom of the board.

ATC351/2 Disassembly

ADM3 Removal

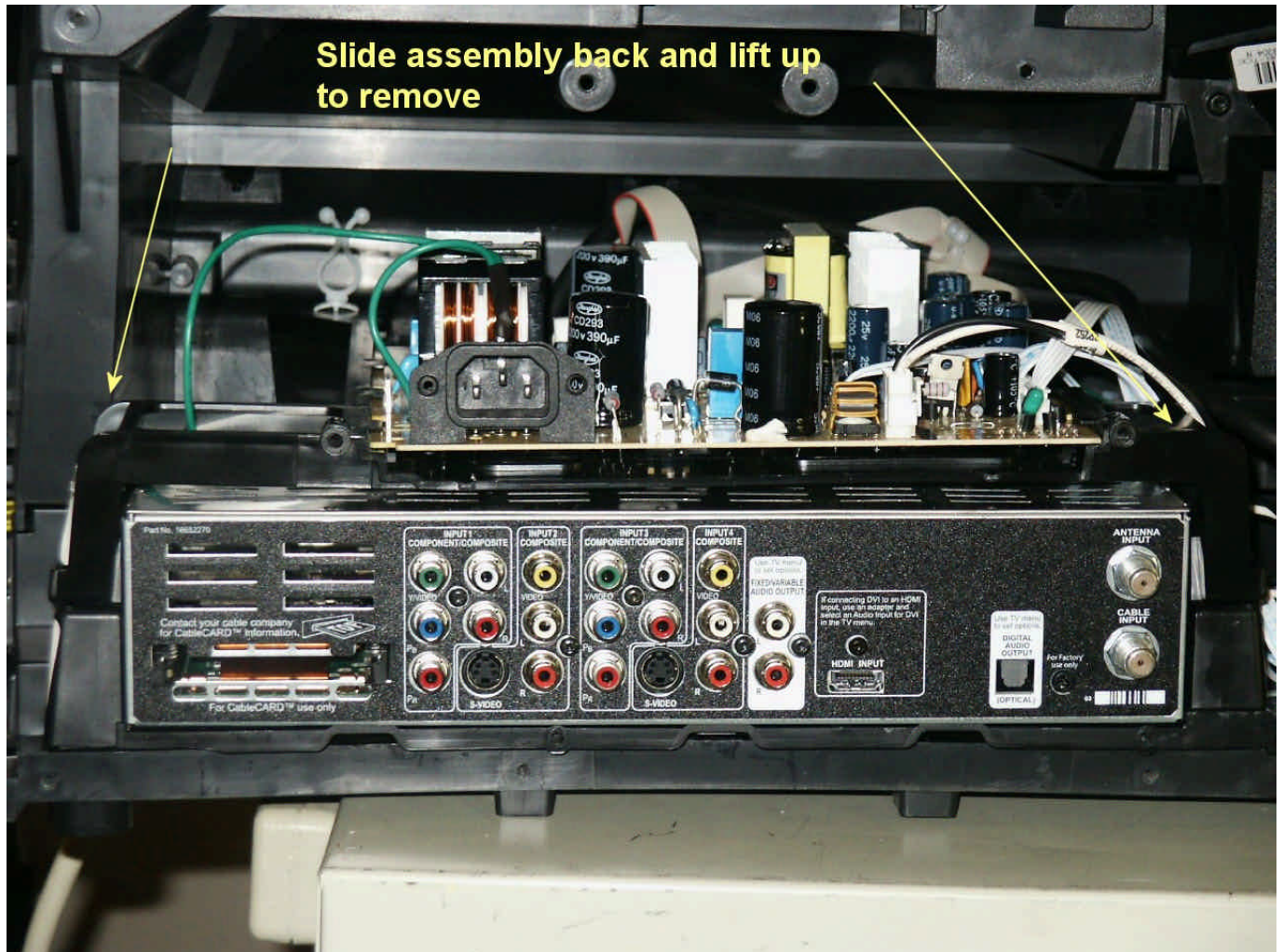


Fig 5

Slide the ADM3 Tray Assembly toward the rear of the unit for approximately 1 inch and lift the tray upwards to release from the bottom of the cabinet.

ATC351/2 Disassembly

Ballast Housing Removal

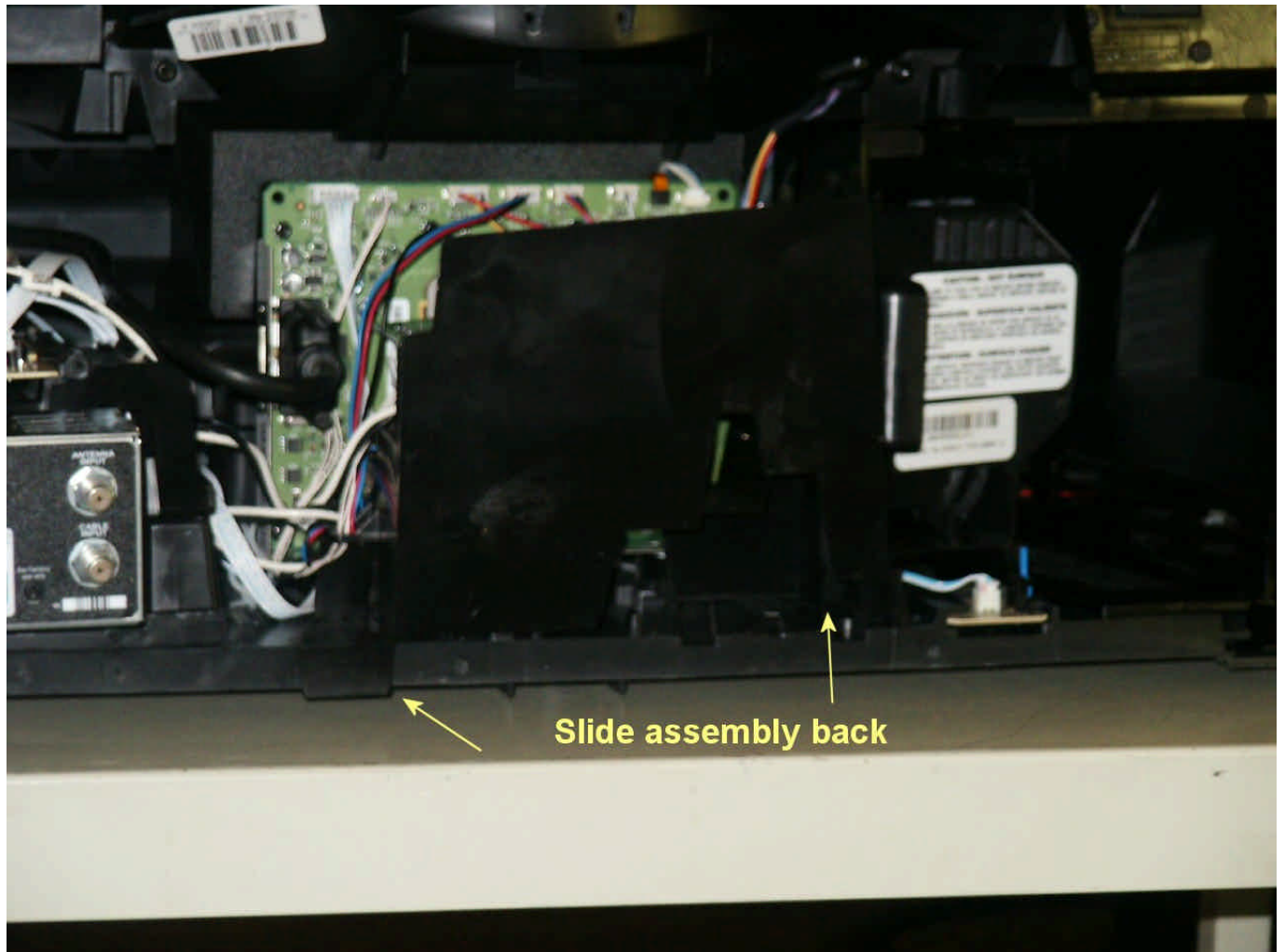


Fig 6

Slide the plastic Ballast Housing toward the rear of the unit (Fig 6) and it will lay down for component measurements and replacement. The Ballast Housing must be removed to gain access to the Light Engine.

ATC351/2 Disassembly

Lamp Protective Housing Removal

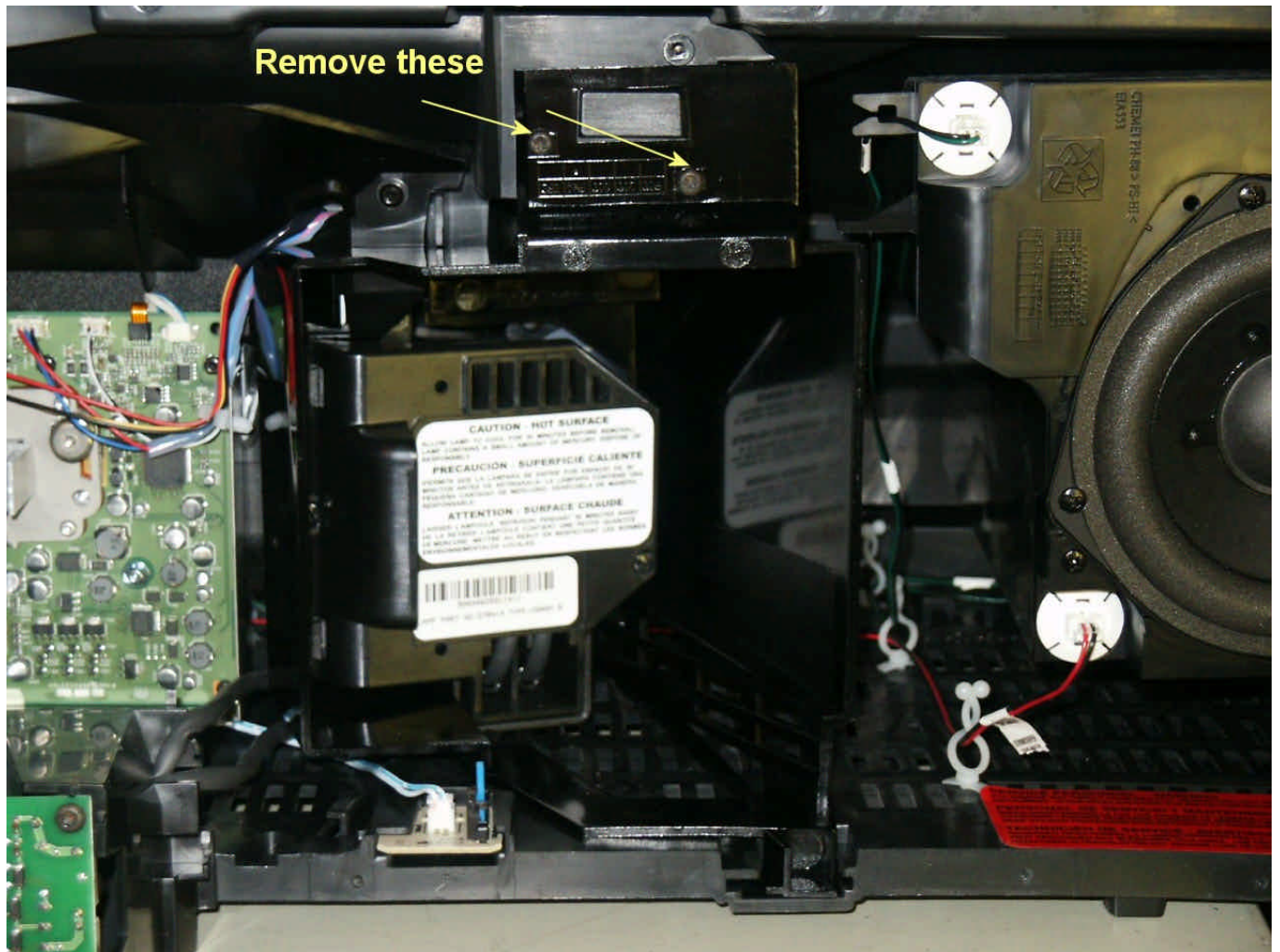


Fig 7

Locate and remove the screws as shown in Fig 7. The housing will slide to the rear of the unit. This Housing must be removed to gain access to the Light Engine.

ATC351/2 Disassembly

Light Engine Removal

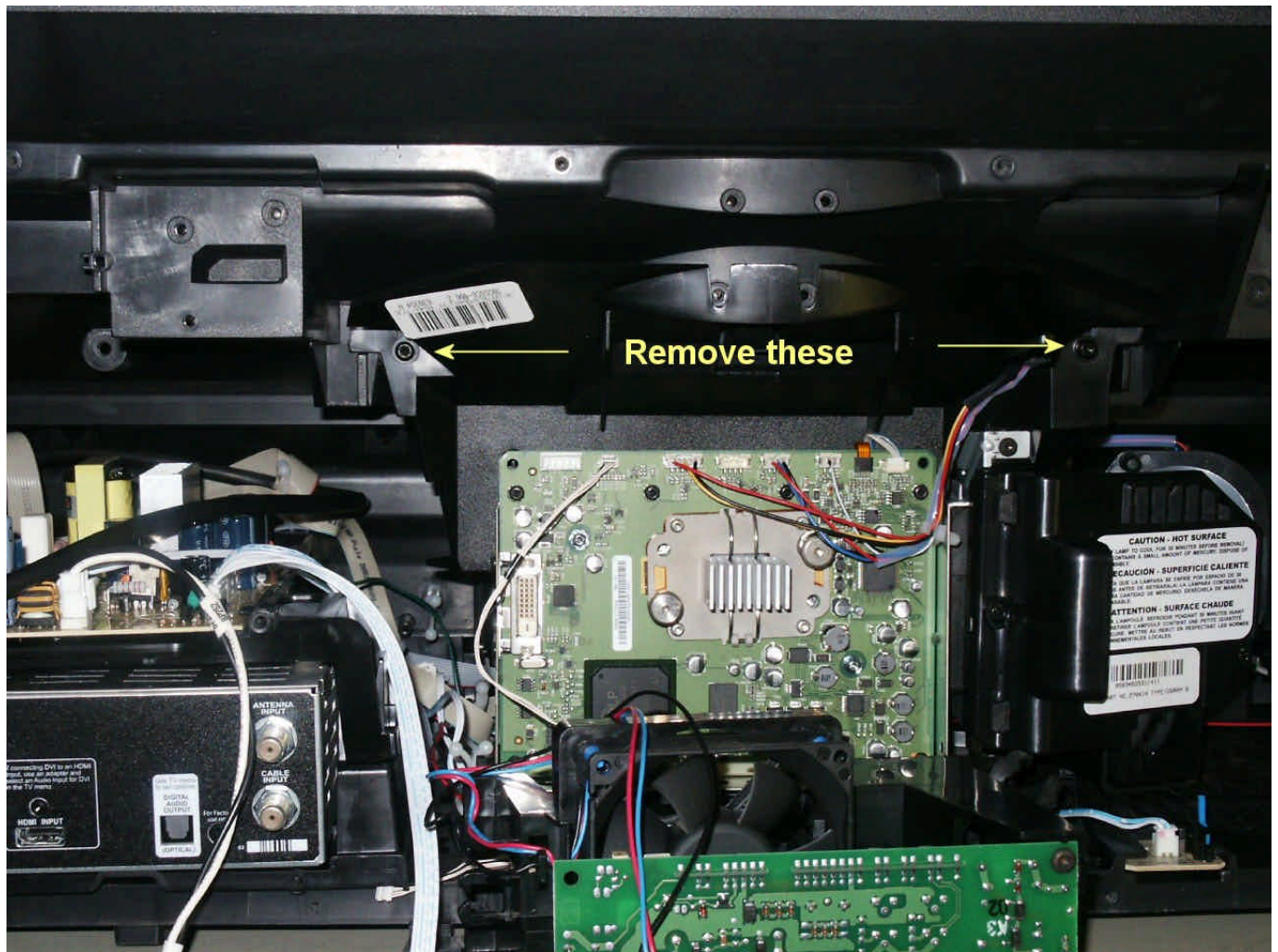


Fig 8

Remove the cables from the Light Engine to the ADM3 module and the Ballast circuit. Locate and remove the screws as shown in Fig 8. Gently slide the Light Engine towards the rear of the unit. Be careful to keep from touching the lens assembly or the lamp lens.

ATC351/2 Disassembly

Front Screen Access

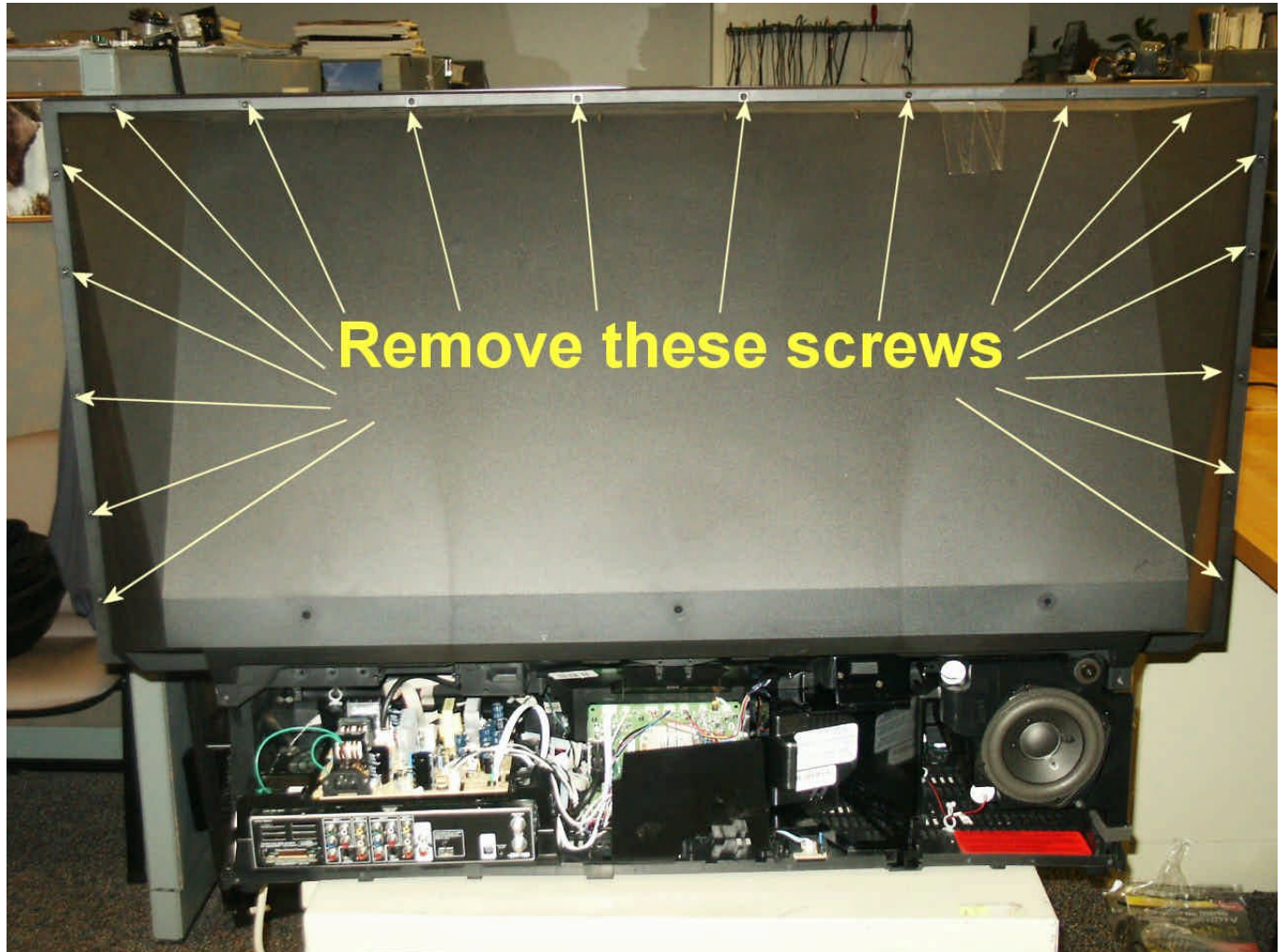


Fig 9

Remove the screws as shown in Fig 9. The Front Screen assembly can be removed by gently lifting up on the entire screen assembly and pull the assembly toward your body. This will allow access to the inside mirrors and IR sensor.