

**SECTION: 7**

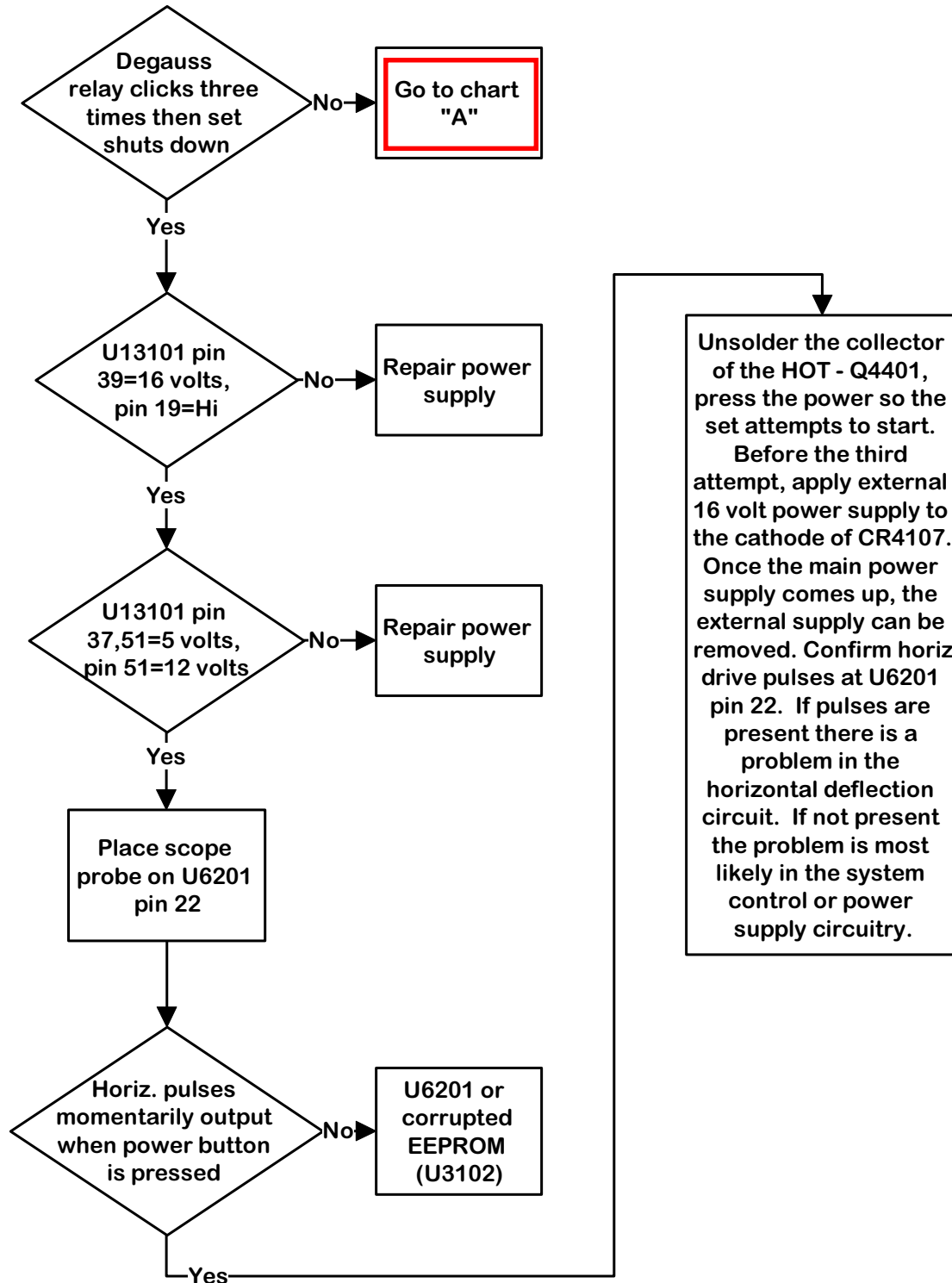
**TROUBLESHOOTING FLOWCHART SUBINDEX**

<b>Audio .....</b>	<b>9</b>
<b>Horizontal - Failed Horizontal Output .....</b>	<b>7</b>
<b>Power Supply - Fuse Open .....</b>	<b>5</b>
<b>Power Supply - No Output Voltages .....</b>	<b>6</b>
<b>Power Supply - No Raw B+ .....</b>	<b>5</b>
<b>Set Will Not Turn On .....</b>	<b>2</b>
<b>Vertical Collapse .....</b>	<b>8</b>
<b>Vertical Foldover .....</b>	<b>8</b>

## TROUBLESHOOTING (Continued)

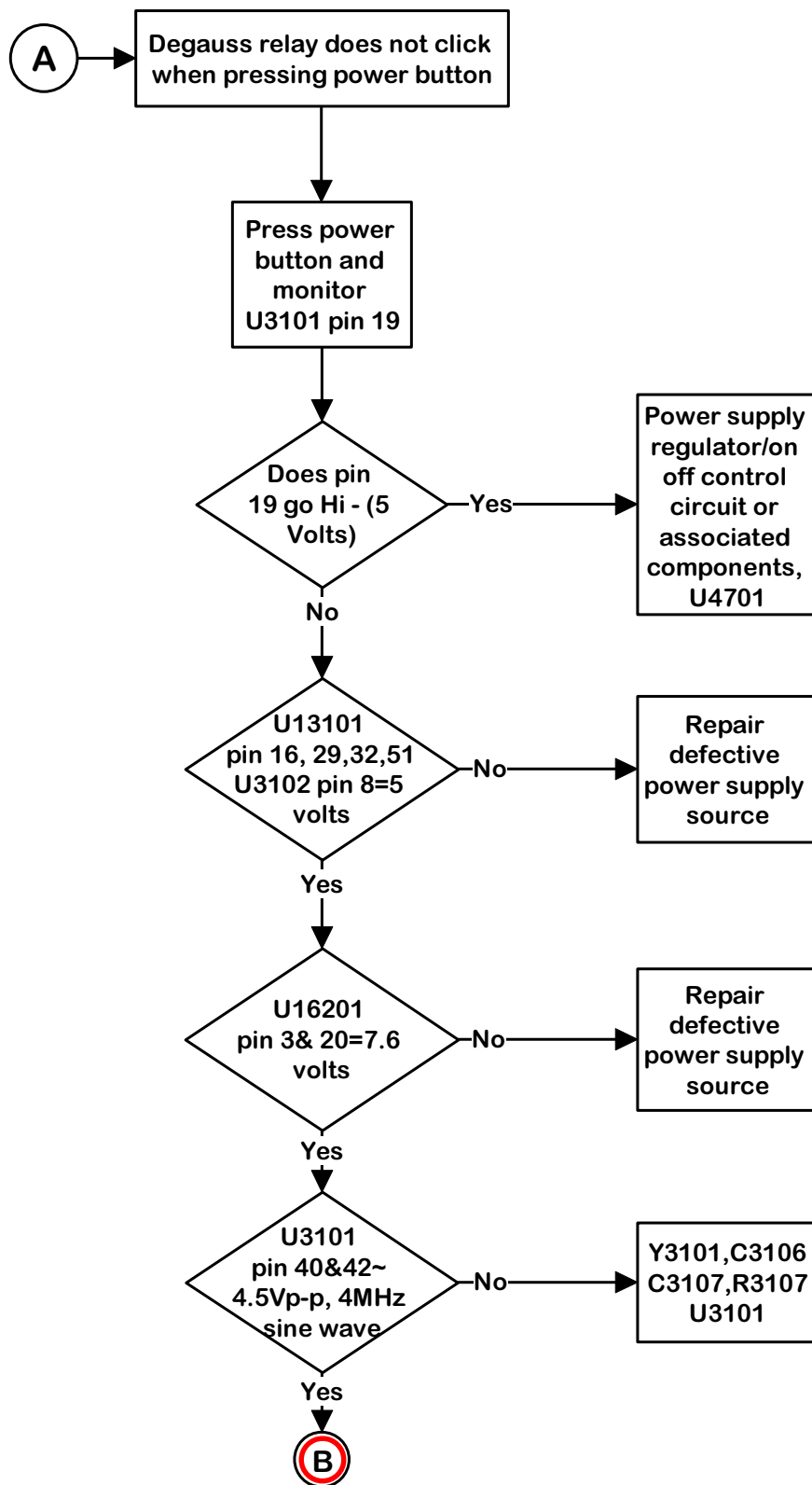
## Set Will Not Turn On

If the television tries to start three times and then stops (you can hear the clicking sound of the degauss relay), the EEPROM (U13102) and T-chip (U16201) are working - hardware OK. Problem is most likely power supply or deflection related. Use the following flowchart to isolate the fault.



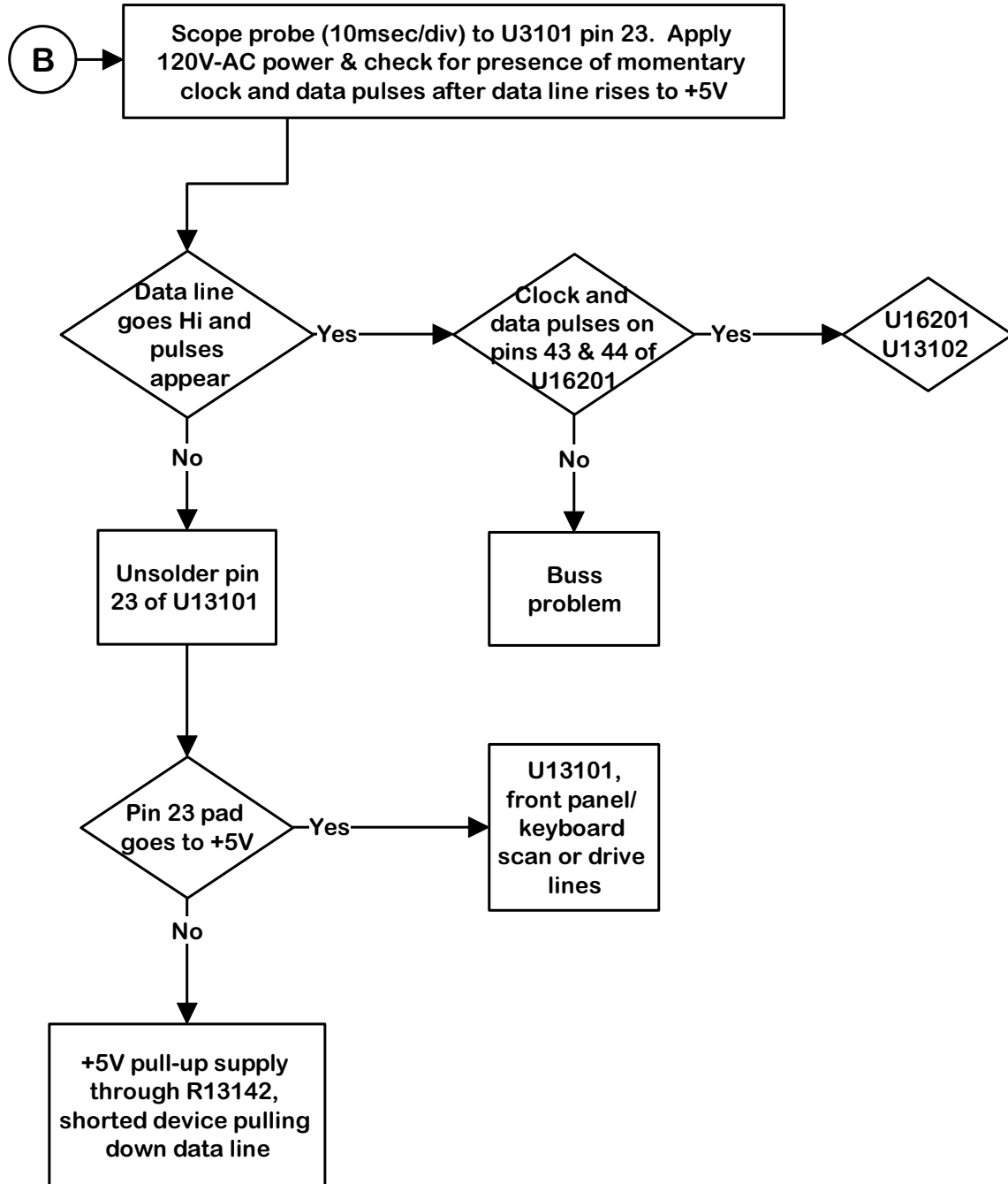
## TROUBLESHOOTING (Continued)

## Set Will Not Turn On (Continued)



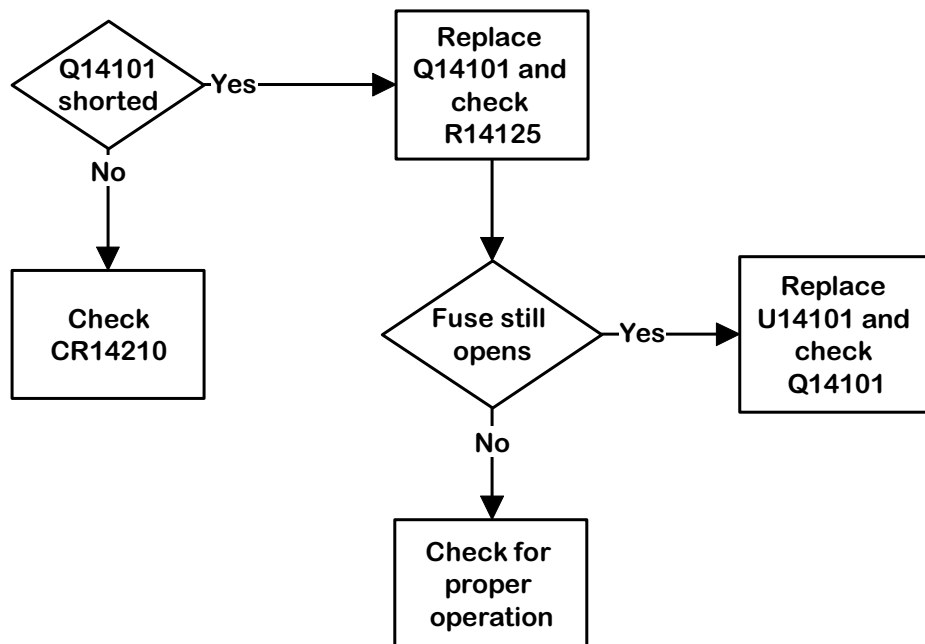
## TROUBLESHOOTING (Continued)

## Set Will Not Turn On (Continued)

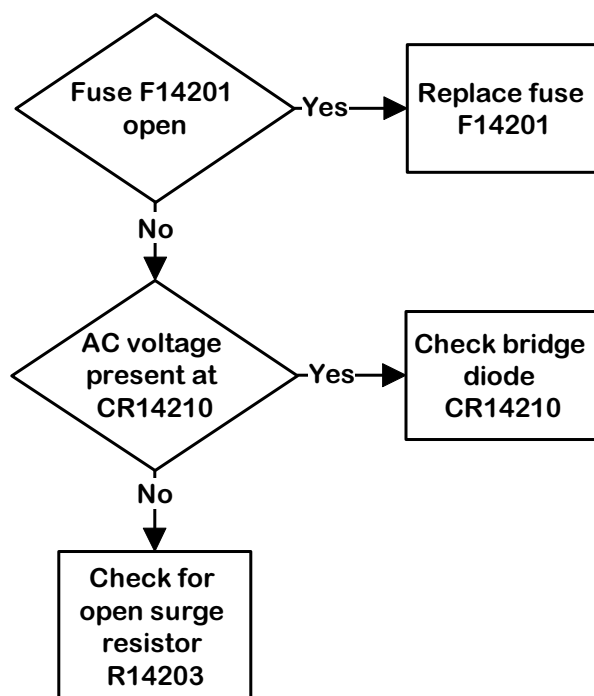


## TROUBLESHOOTING (Continued)

## Power - Fuse Opens

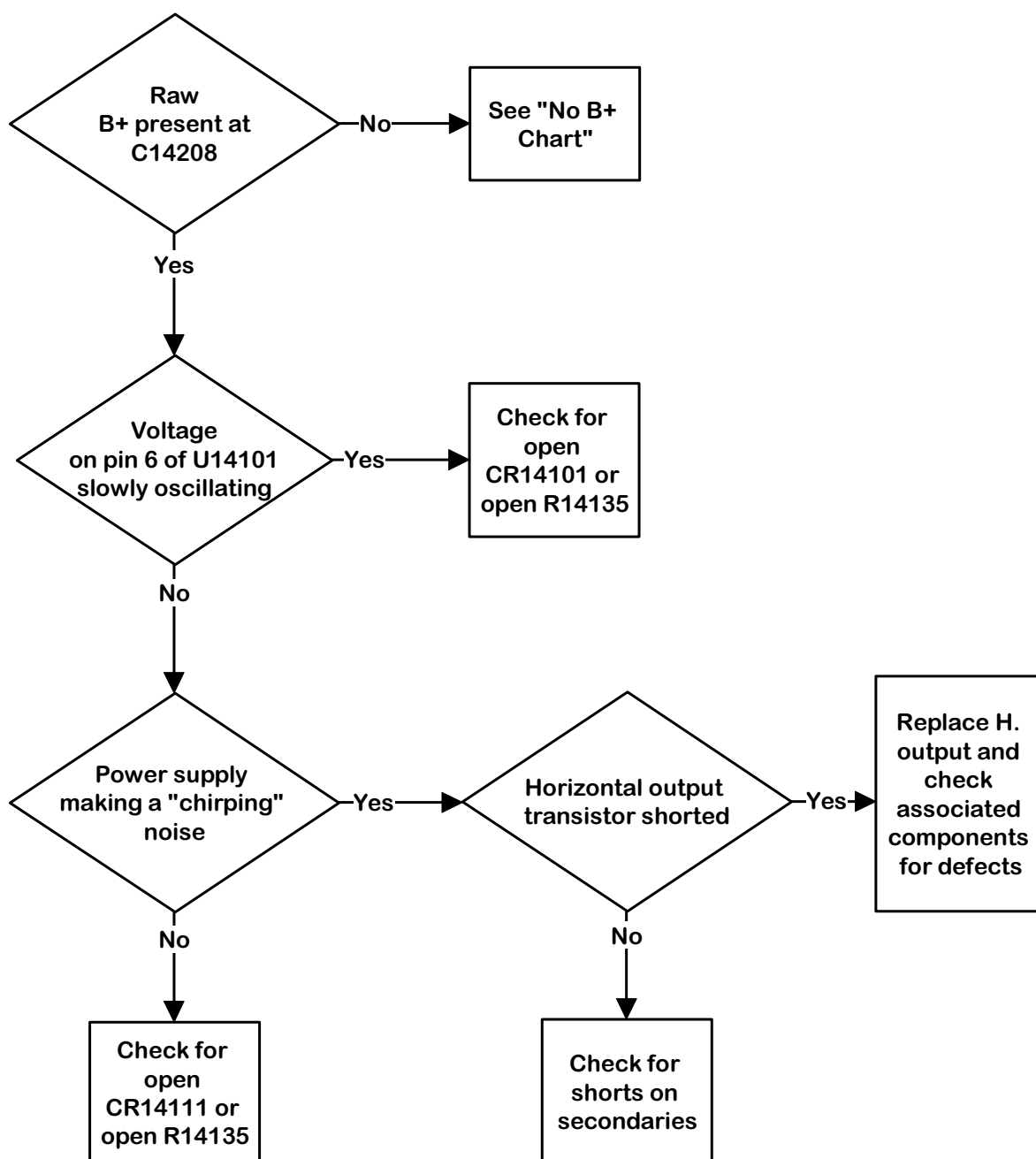


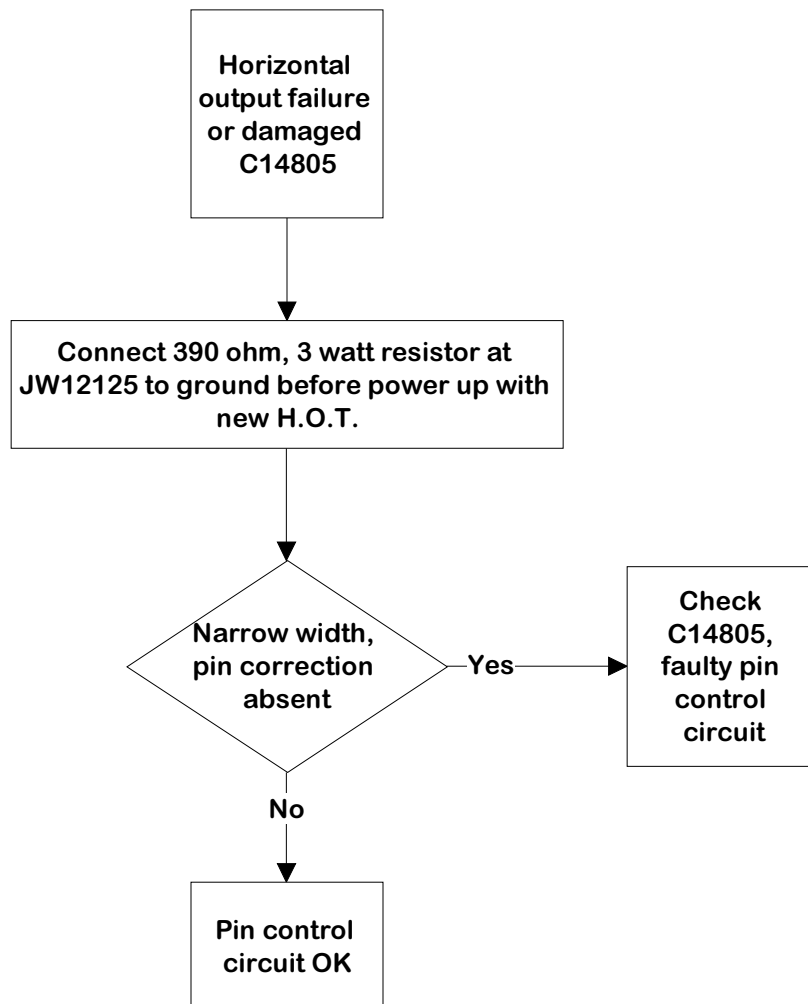
## Power - No Raw B+



## TROUBLESHOOTING (Continued)

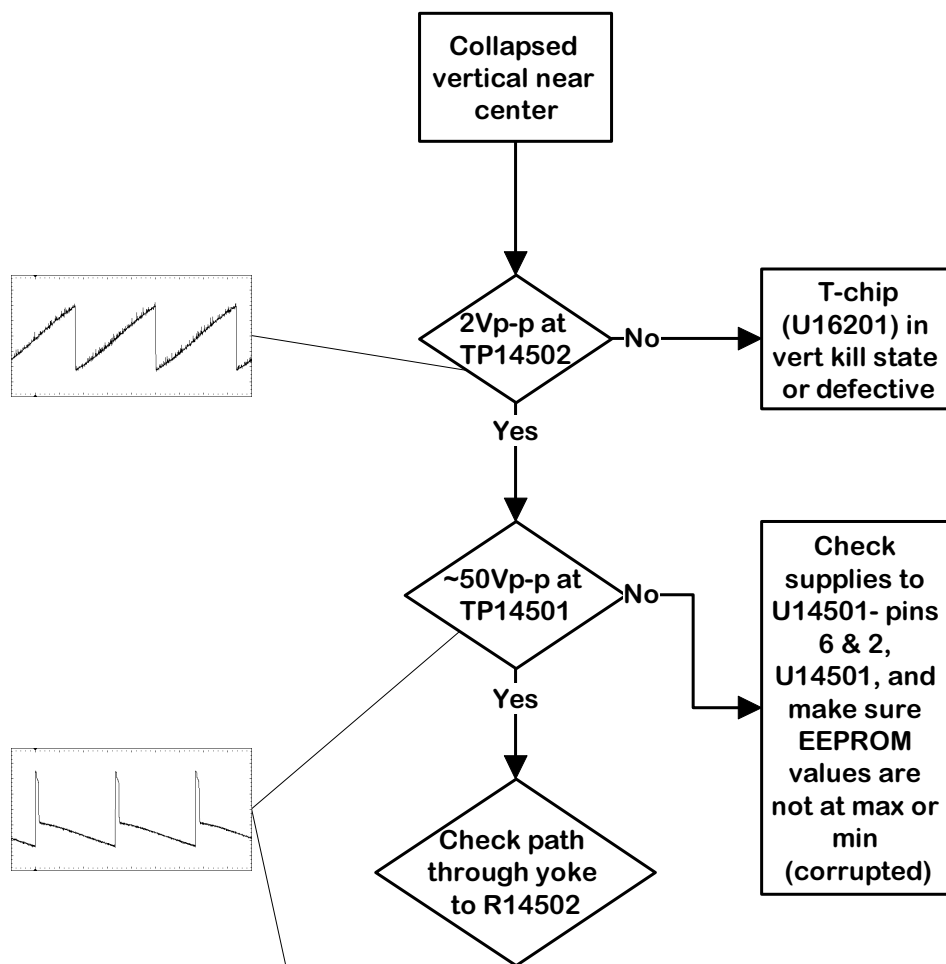
## Power - No Output Voltages



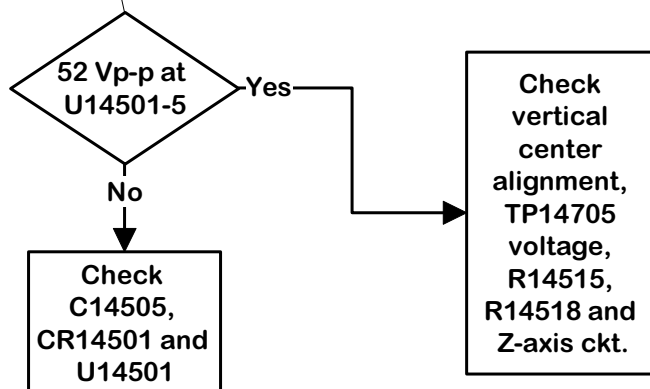
**TROUBLESHOOTING (Continued)****Horizontal - Failed Horizontal Output**

## TROUBLESHOOTING (Continued)

## Vertical - Collapsed



## Vertical - Top Folded





## TROUBLESHOOTING (Continued)

## Audio Troubleshooting

