

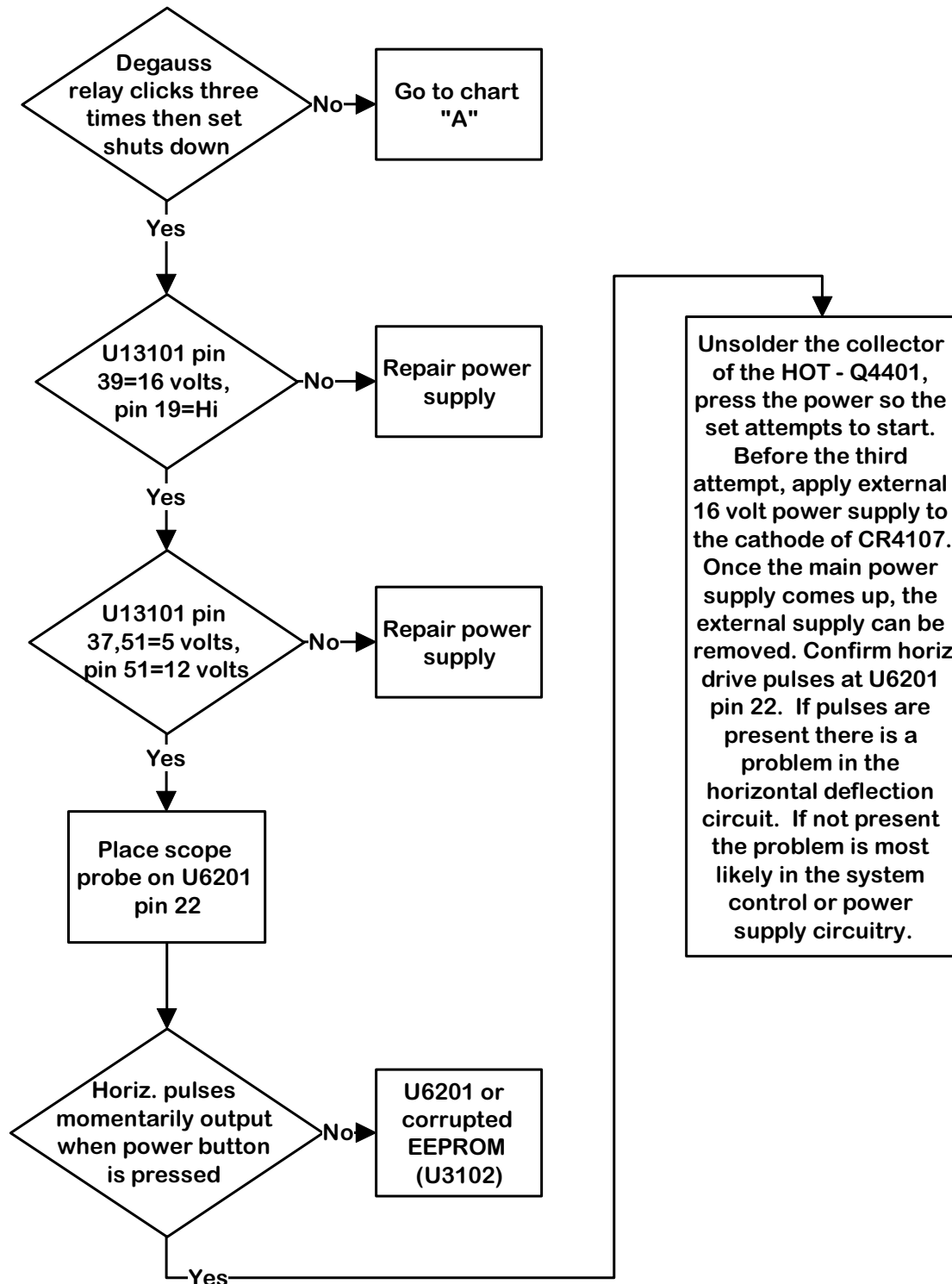
TROUBLESHOOTING FLOWCHART SUBINDEX

	Page Number
Audio	7-9
Convergence Circuit	7-10
Horizontal - Failed Horizontal Output	7-7
Power Supply - Fuse Open	7-5
Power Supply - No Output Voltages	7-6
Power Supply - No Raw B+	7-5
Set Will Not Turn On	7-2
Vertical Collapse	7-8
Vertical Foldover	7-8

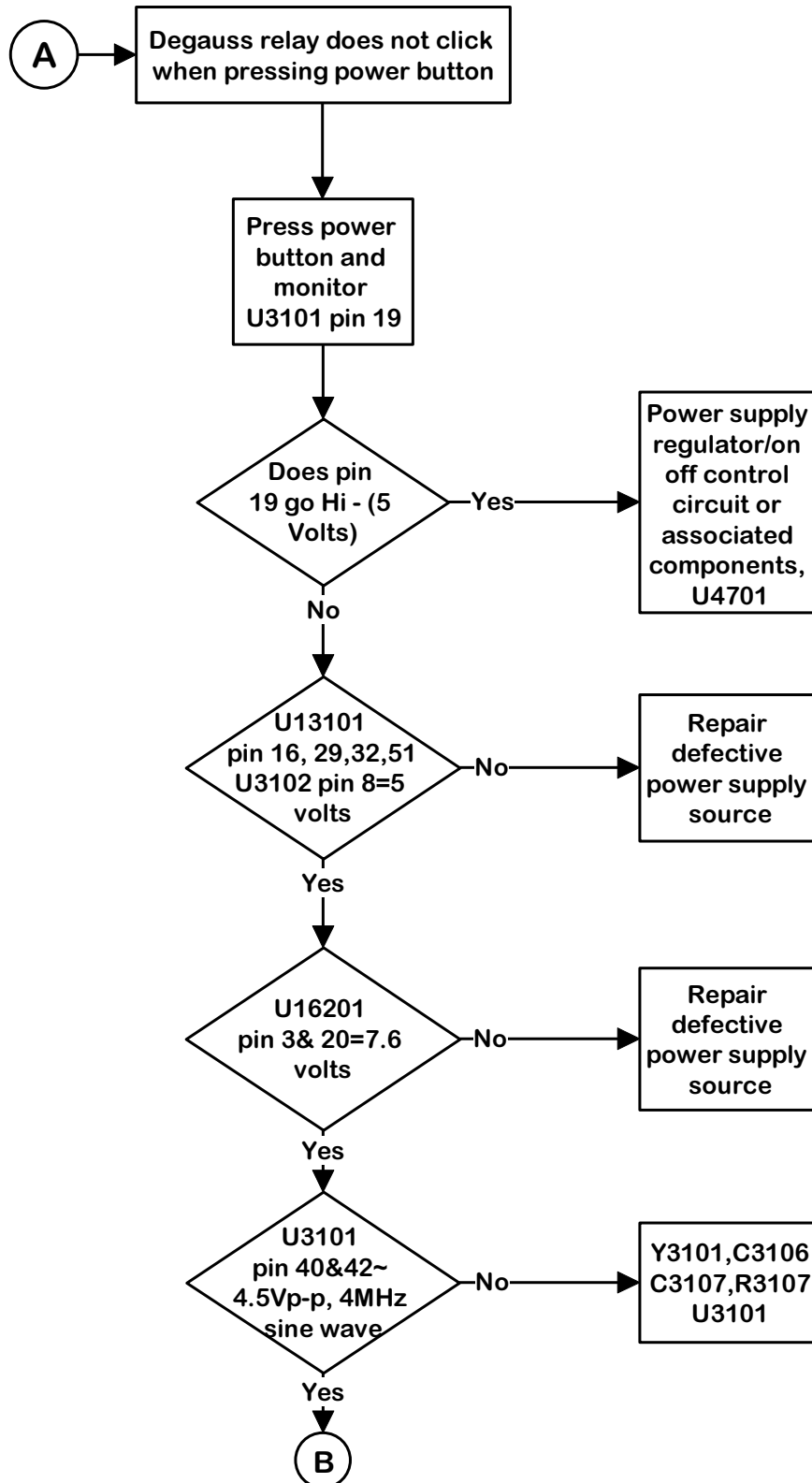
TROUBLESHOOTING (Continued)

Set Will Not Turn On

If the television tries to start three times and then stops (you can hear the clicking sound of the degauss relay), the EEPROM (U13102) and T-chip (U16201) are working - hardware OK. Problem is most likely power supply or deflection related. Use the following flowchart to isolate the fault.

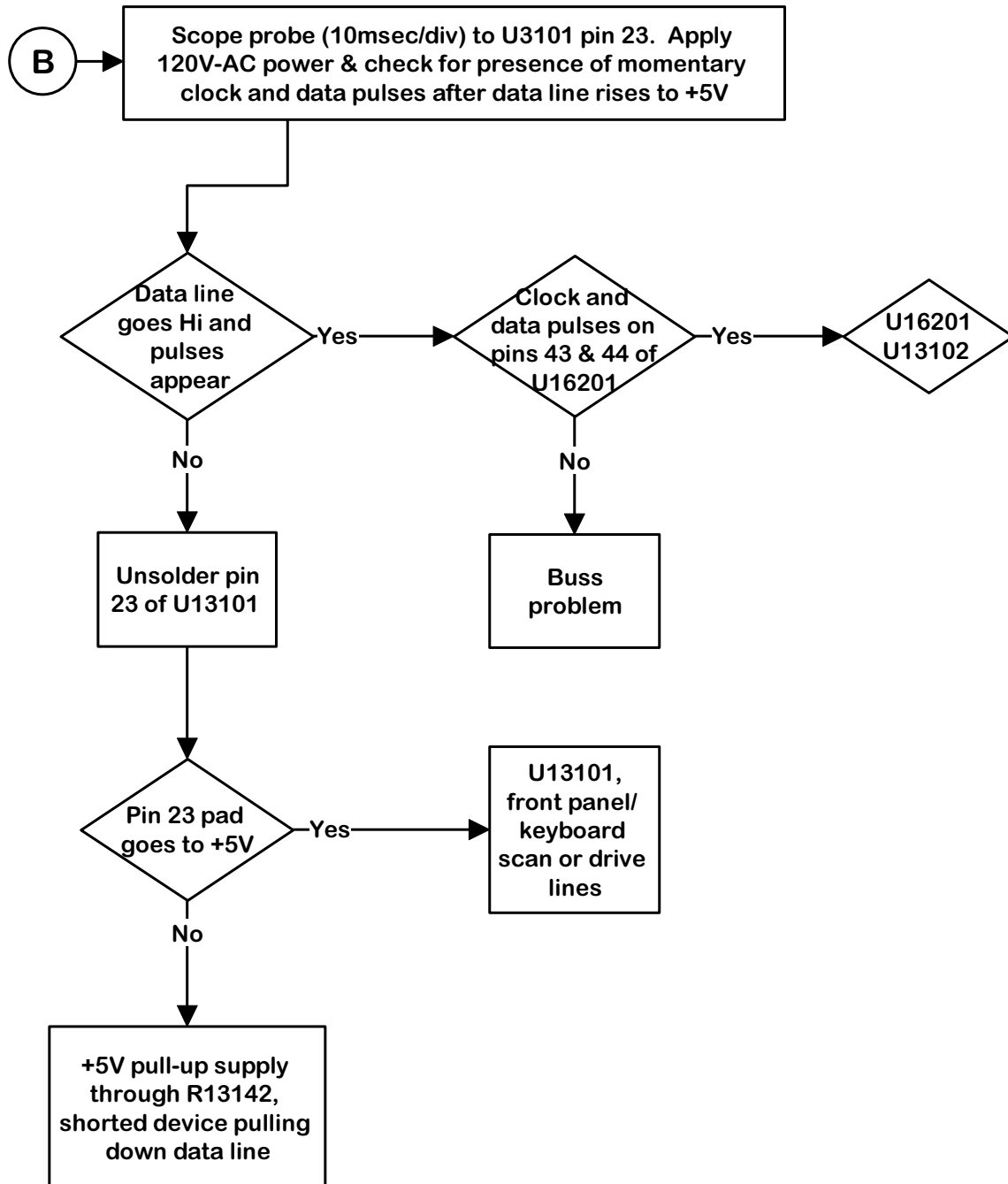


Set Will Not Turn On (Continued)



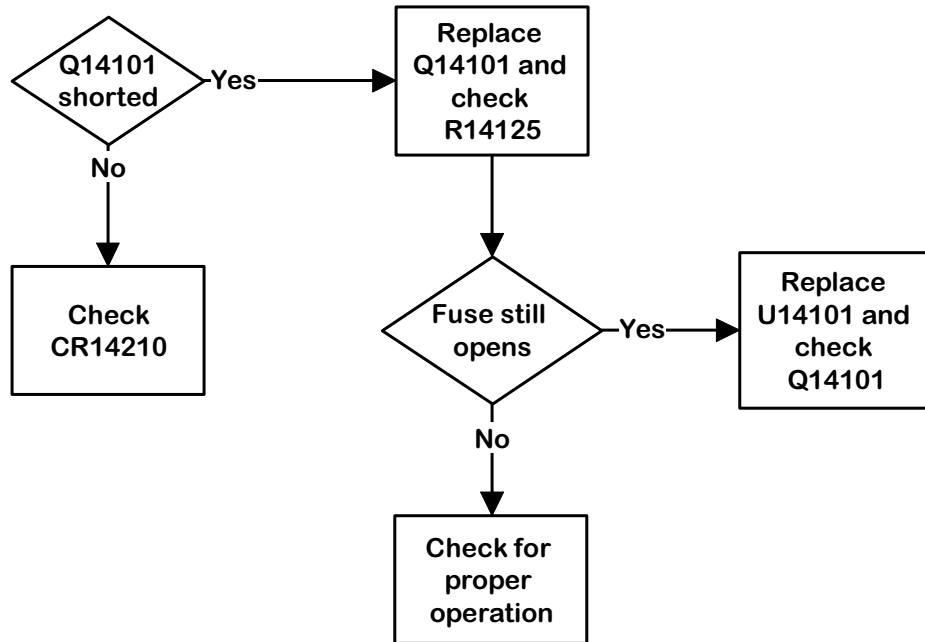
TROUBLESHOOTING (Continued)

Set Will Not Turn On (Continued)

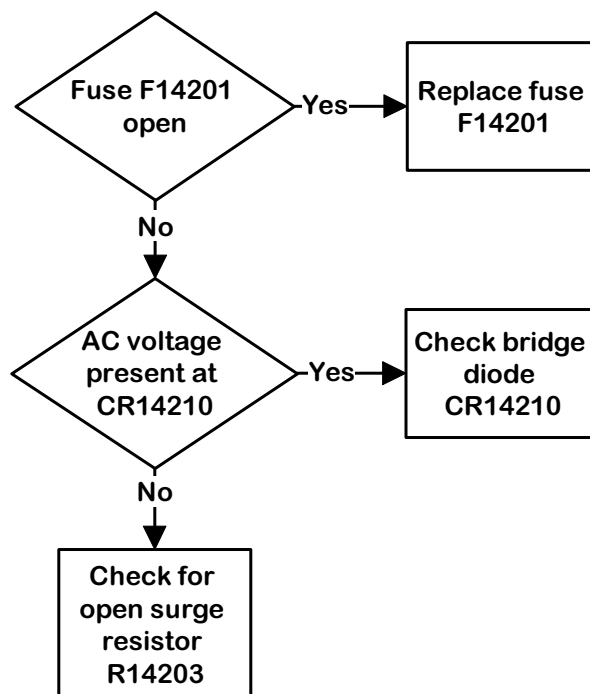


TROUBLESHOOTING (Continued)

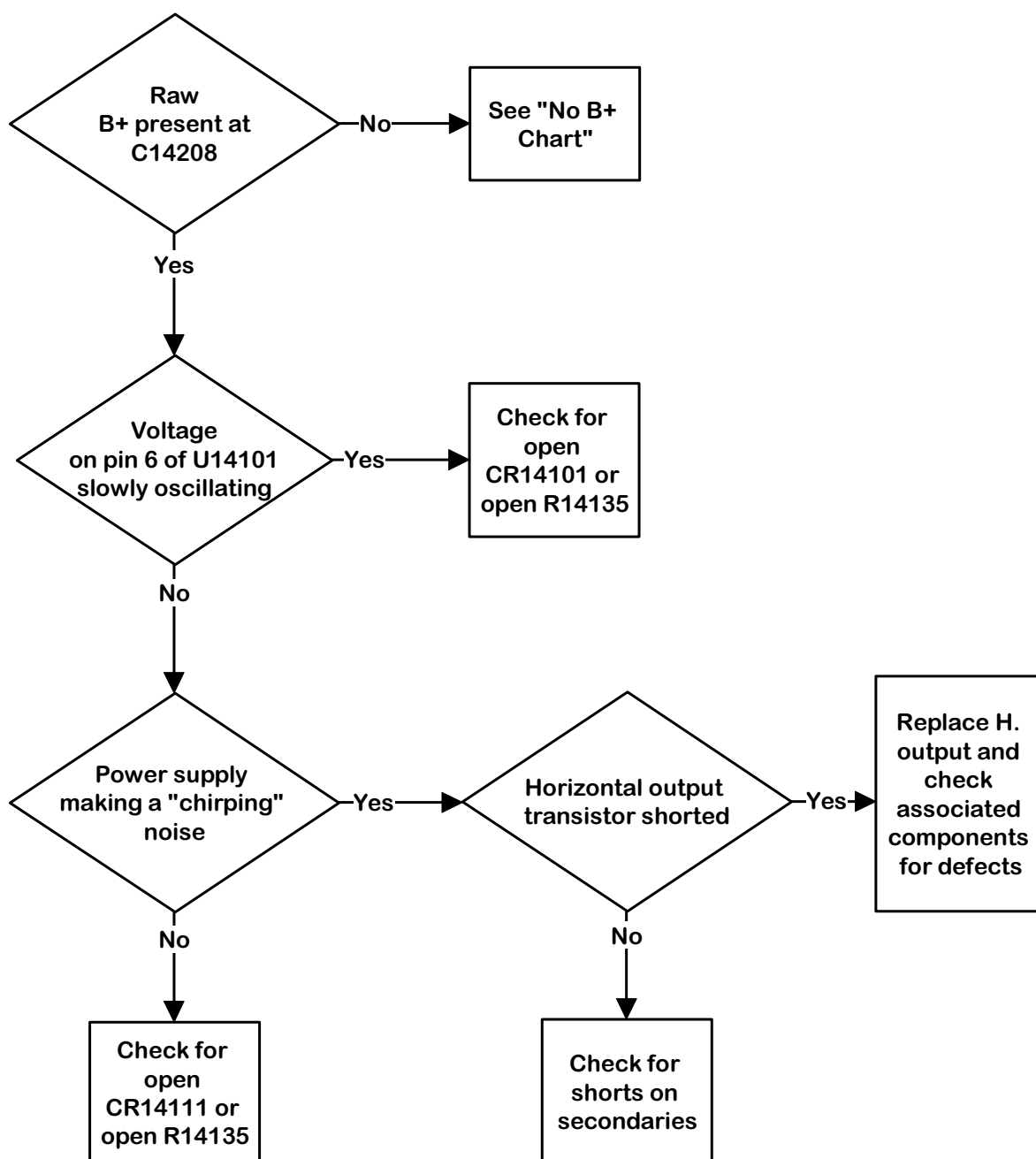
Power - Fuse Opens

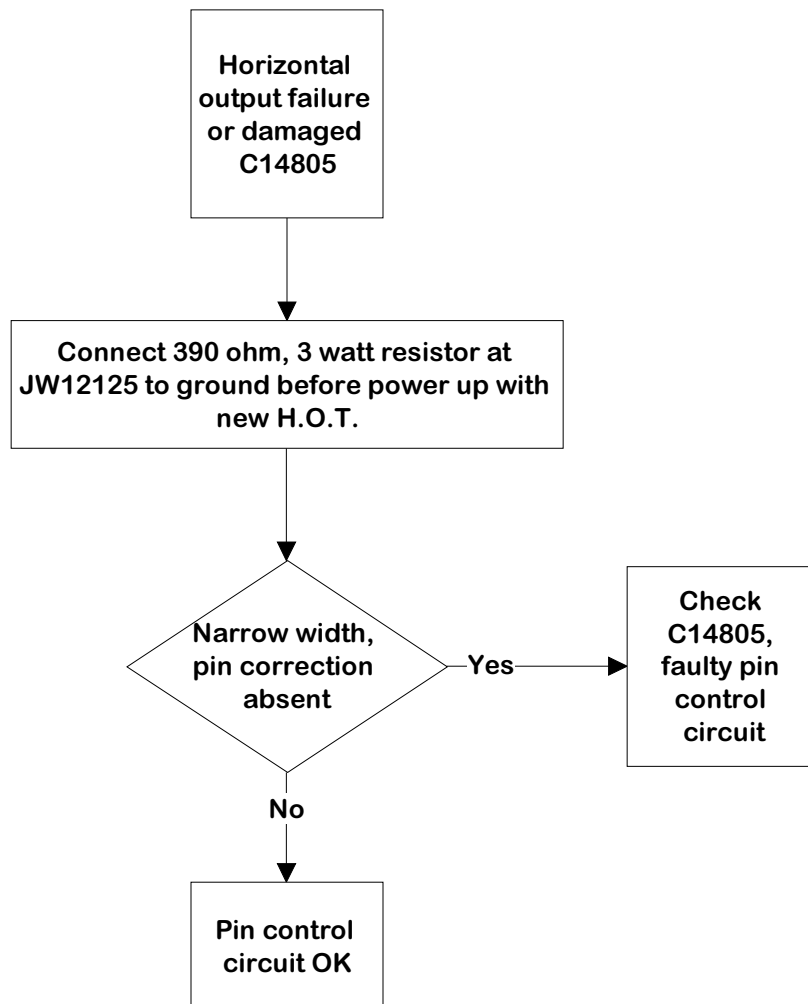


Power - No Raw B+



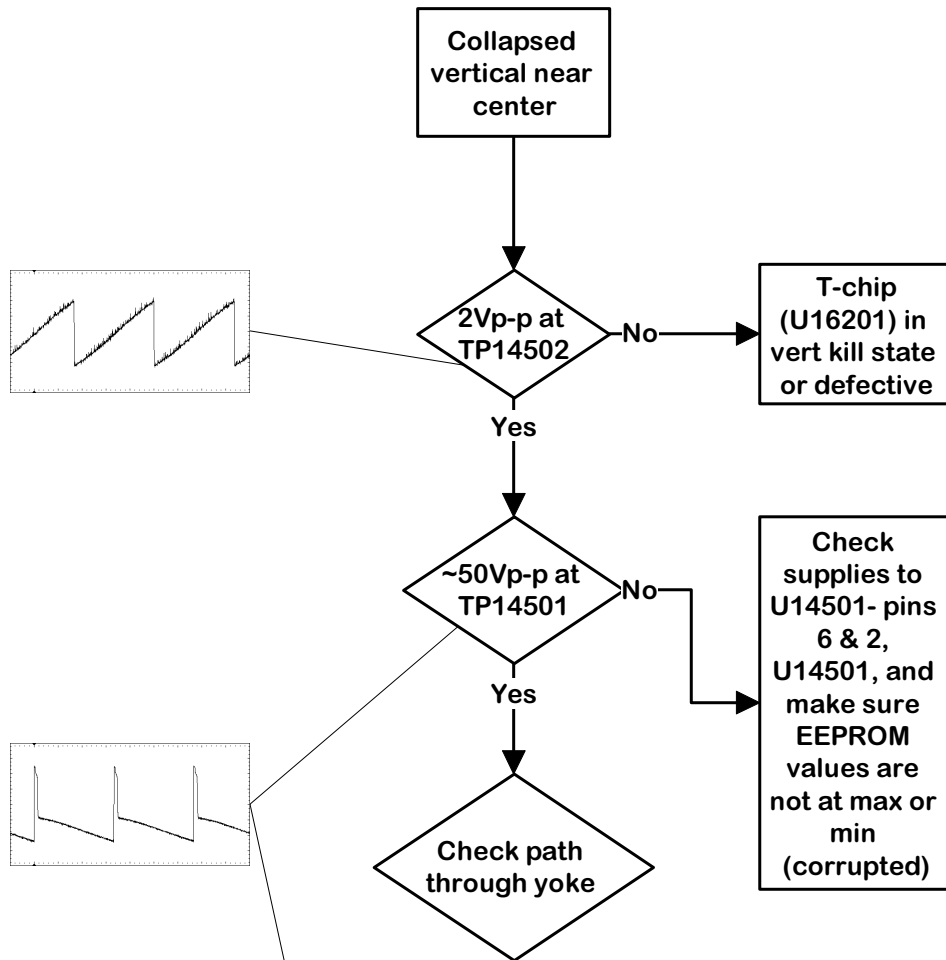
Power - No Output Voltages



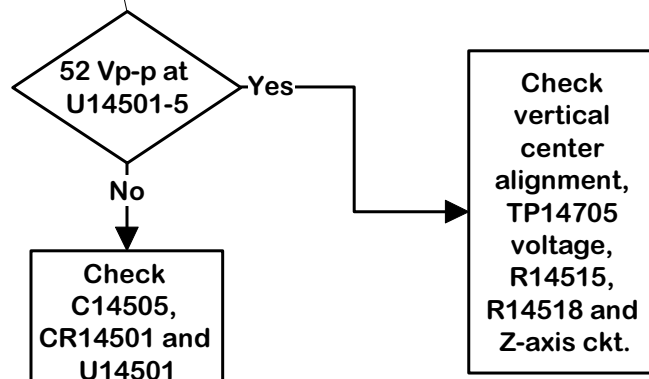
Horizontal - Failed Horizontal Output

TROUBLESHOOTING (Continued)

Vertical - Collapsed

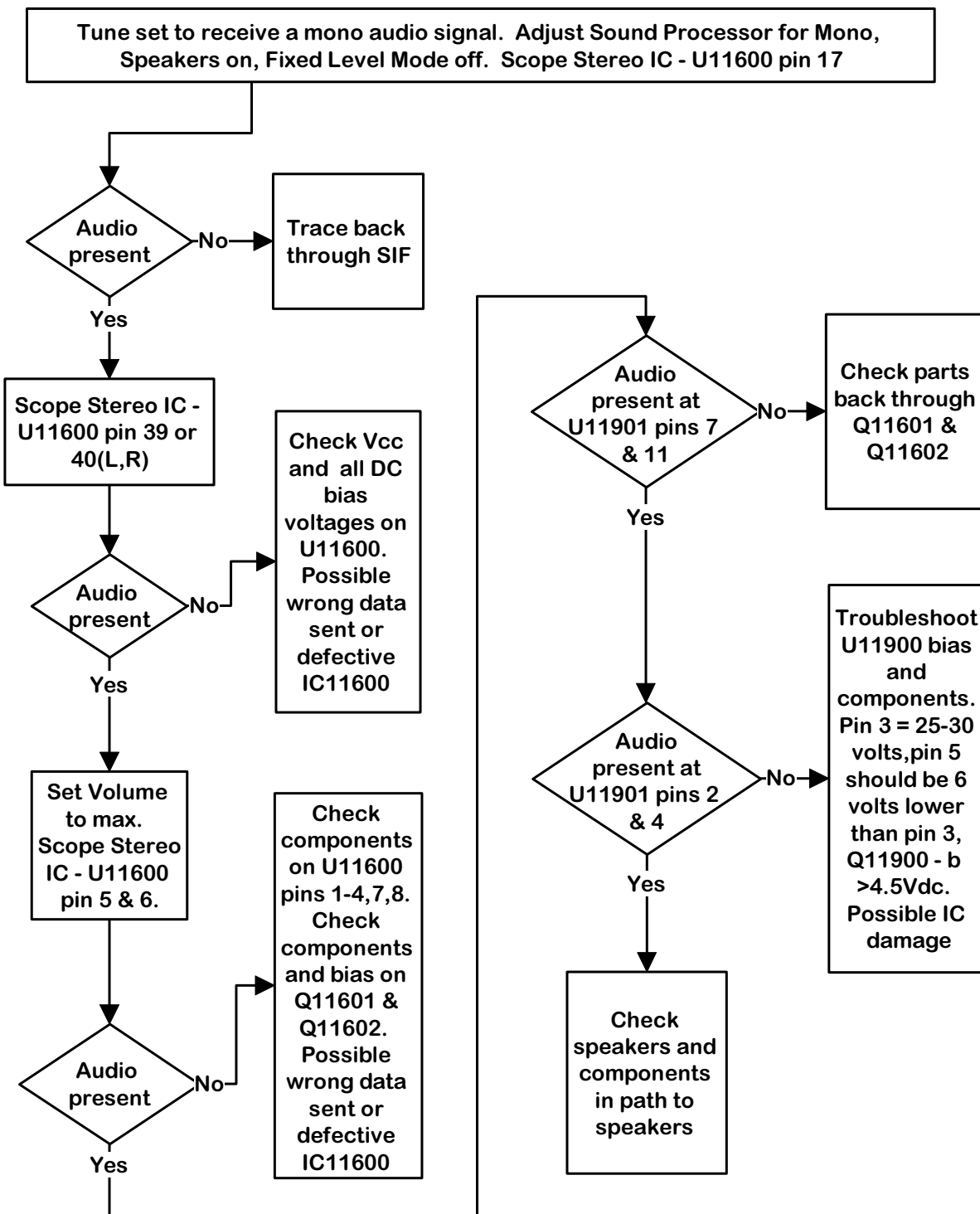


Vertical - Top Folded



TROUBLESHOOTING (Continued)

Audio Troubleshooting



TROUBLESHOOTING (Continued)

Convergence Circuit Defective

