

Audio Signal Path Block Diagram

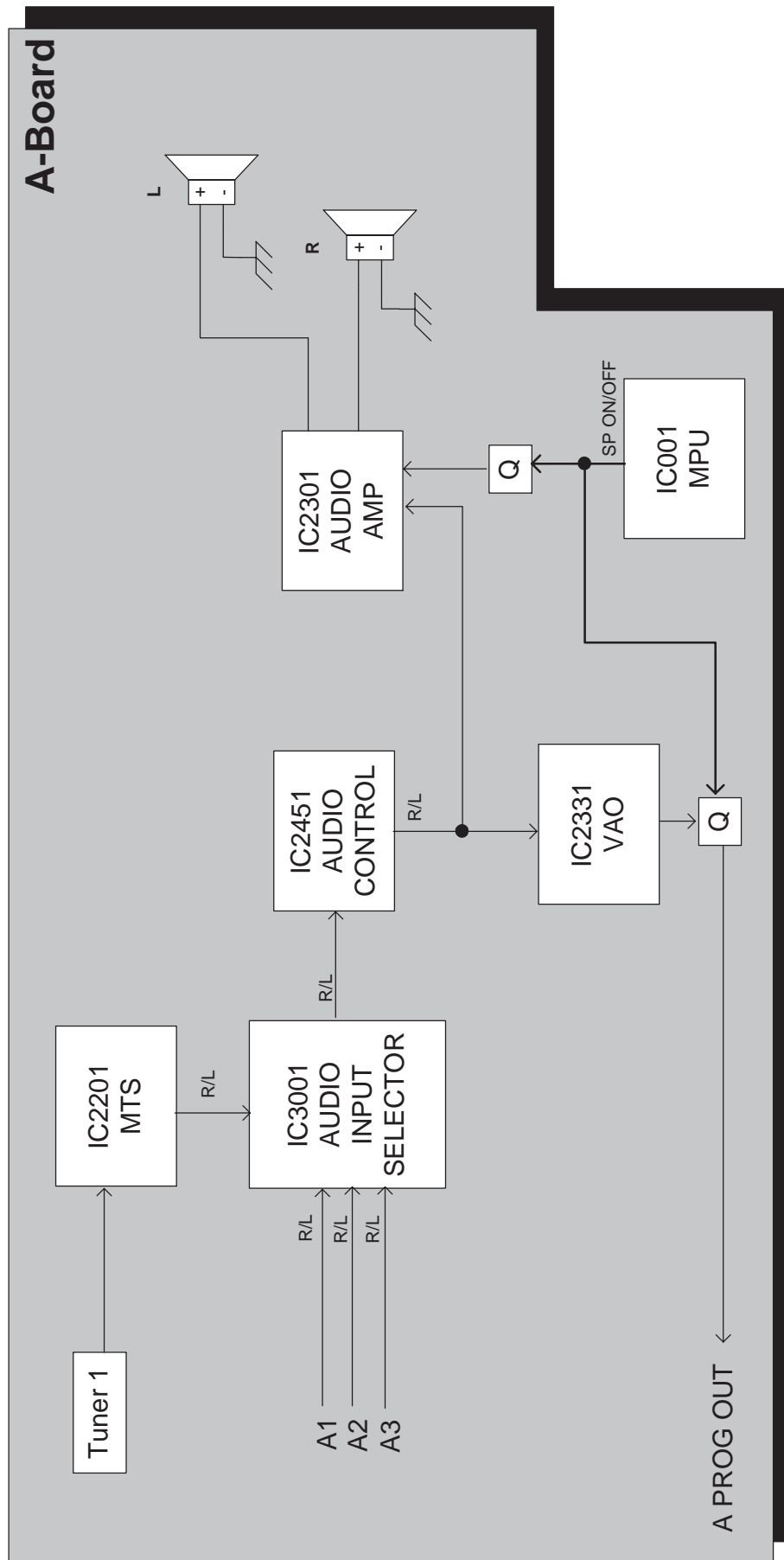


Figure 40. Audio Signal Path Block Diagram.

Video Signal Path Block Diagram

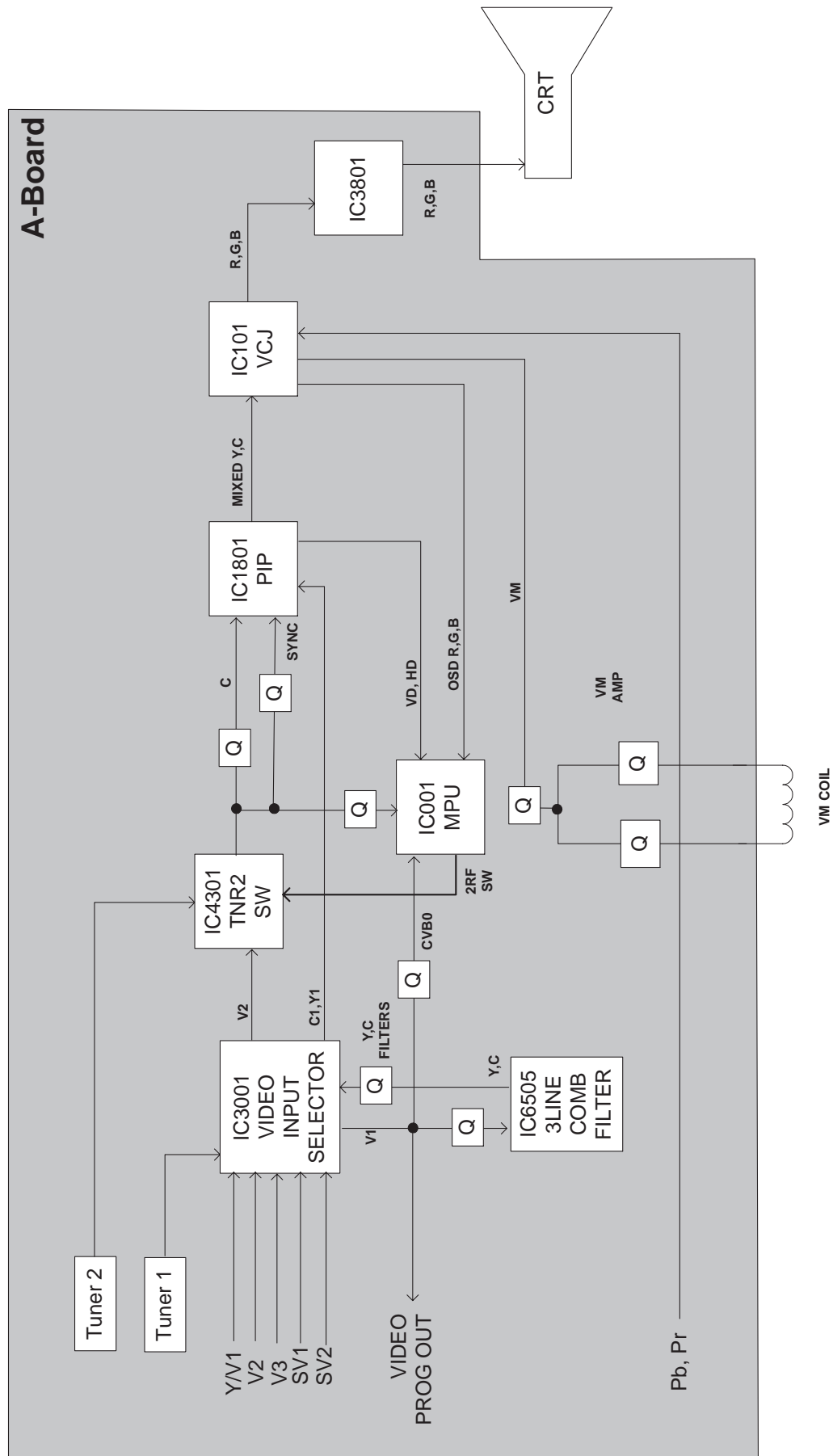


Figure 41. Video Signal Path Block Diagram.

IIC Connection

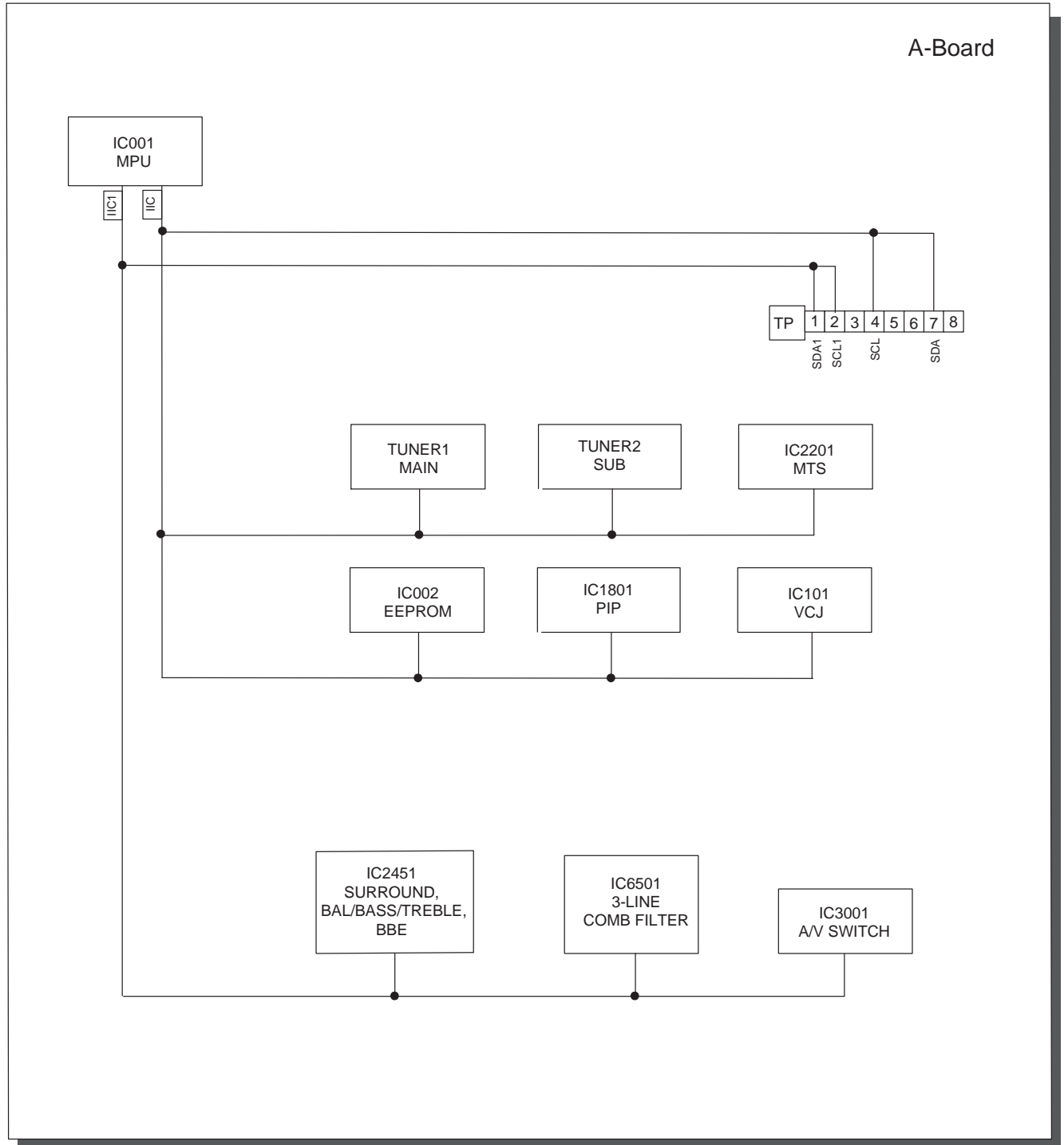


Figure 42. IIC Connection

Description of Connectors

TP	
1	SDA1
2	SCL1
3	FA2
4	SCL
5	TP15
6	NC
7	SDA
8	FA1

A4---2RF	
1	9V
2	RF_SW

A15---DY	
1	V_LO
2	NC
3	V_HI

A11---L1	
1	VM_OUT
2	GND
3	R
4	G
5	B
6	GND
7	12V
8	GND

A1---G1	
1	STB_3.3V
2	REMOTE
3	KEY1
4	(KEY2/SOS) ACTION
5	GND
6	GND
7	STB_5V
8	9V
9	12V
10	GND

A7---D7	
1	TUNER GND
2	TUNER GND
3	TUNER GND
4	TUNER GND
5	SIGNAL GND
6	SIGNAL GND
7	FOCUS PROTECTOR
8	HHS DET
9	FBP
10	ABL
11	SIGNAL GND
12	NC
13	SIGNAL GND
14	NC
15	SIGNAL GND
16	V_PUMP UP

A6---D6	
1	EHT_V
2	H_GND
3	EW_DRIVE
4	H_GND
5	H_DRIVE
6	H_GND
7	SIGMA GND
8	UNREG -15V
9	UNREG -15V
10	UNREG +15V
11	UNREG +15V
12	+12V
13	SIGNAL GND
14	+9V
15	UNREG +11V
16	UNREG +11V

A5---D5	
1	POWER GND
2	POWER GND
3	UNREG +11V
4	UNREG +11V
5	BTL +30V
6	SIGNAL GND
7	STB_12V
8	SIGNAL GND
9	AC ON/OFF
10	DEG ON/OFF
11	SOS
12	SIGNAL GND
13	AUDIO +30V
14	AUDIO +30V
15	AUDIO GND
16	AUDIO GND

A2---G2	
1	GND
2	NC
3	NC
4	GEOMAG
5	GND
6	NC
7	NC
8	GND
9	S3
10	NC

A3---G3	
1	NC
2	L3
3	NC
4	R3
5	GND
6	GND
7	SP (R)
8	GND
9	GND
10	SP (L)

IC101 IN/OUT Pins and Functions (VCJ)

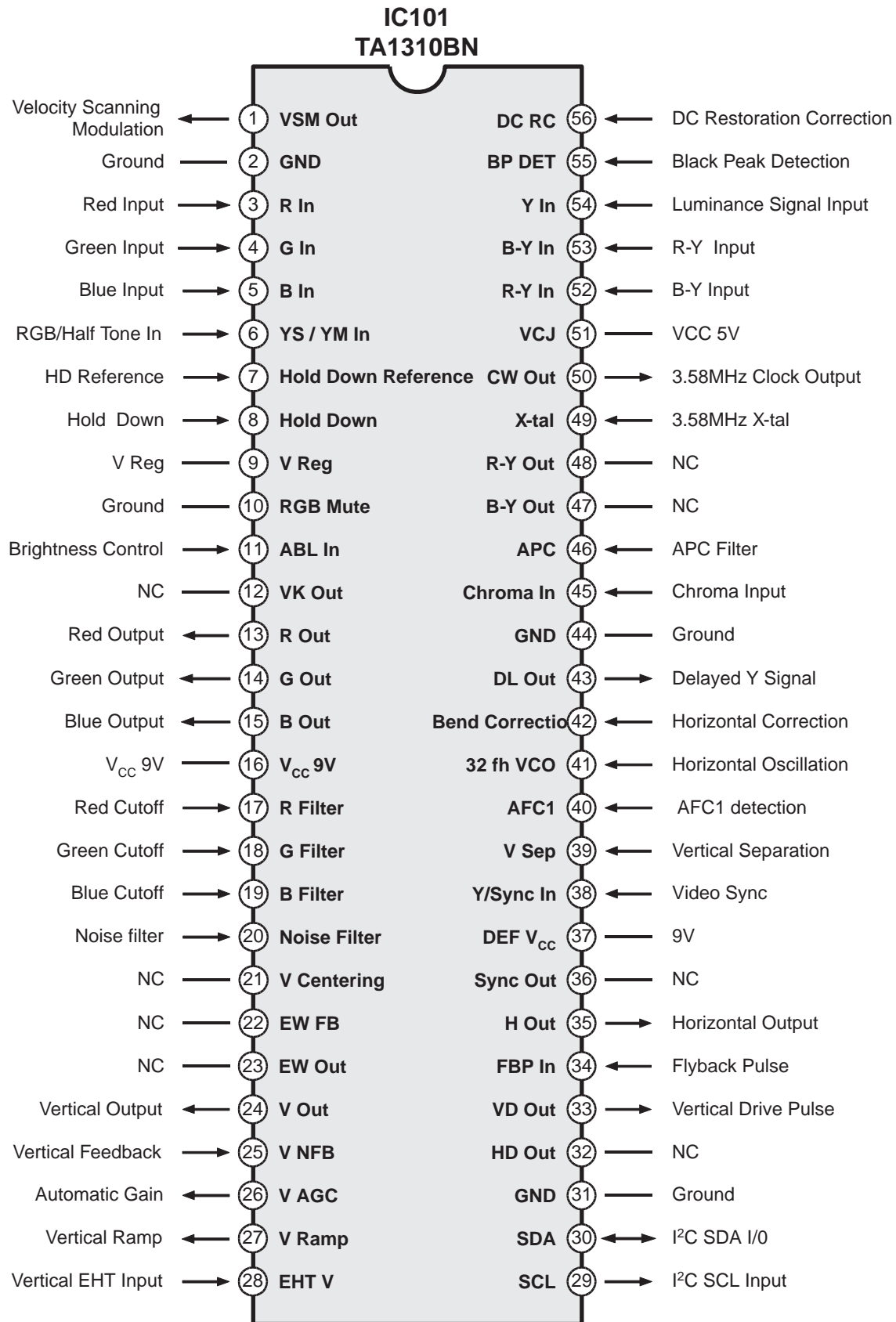


Figure 43. IC101 IN/OUT Pins and Functions (VCJ).

Component Identification

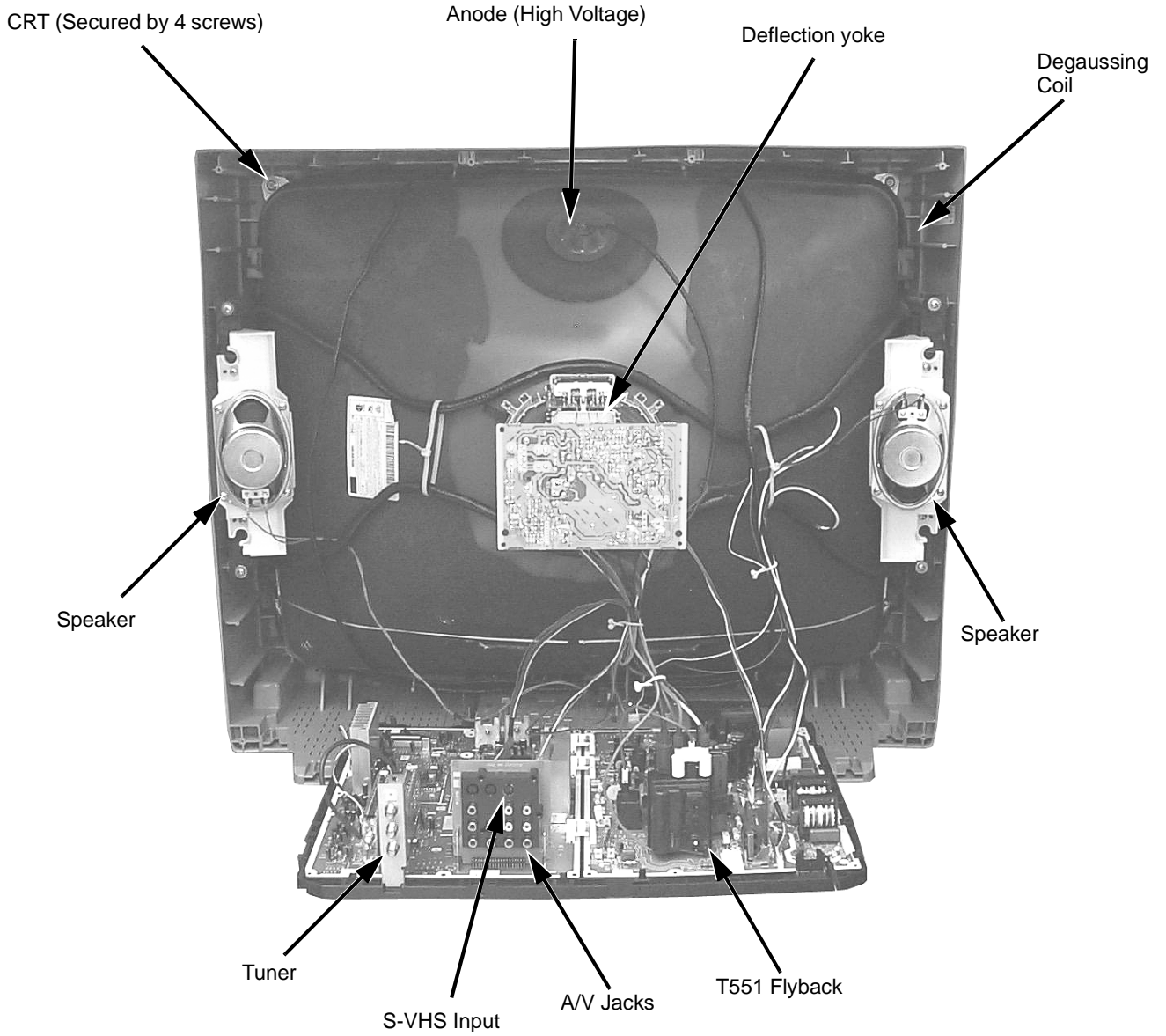


Figure 44. Rear View

Component Identification

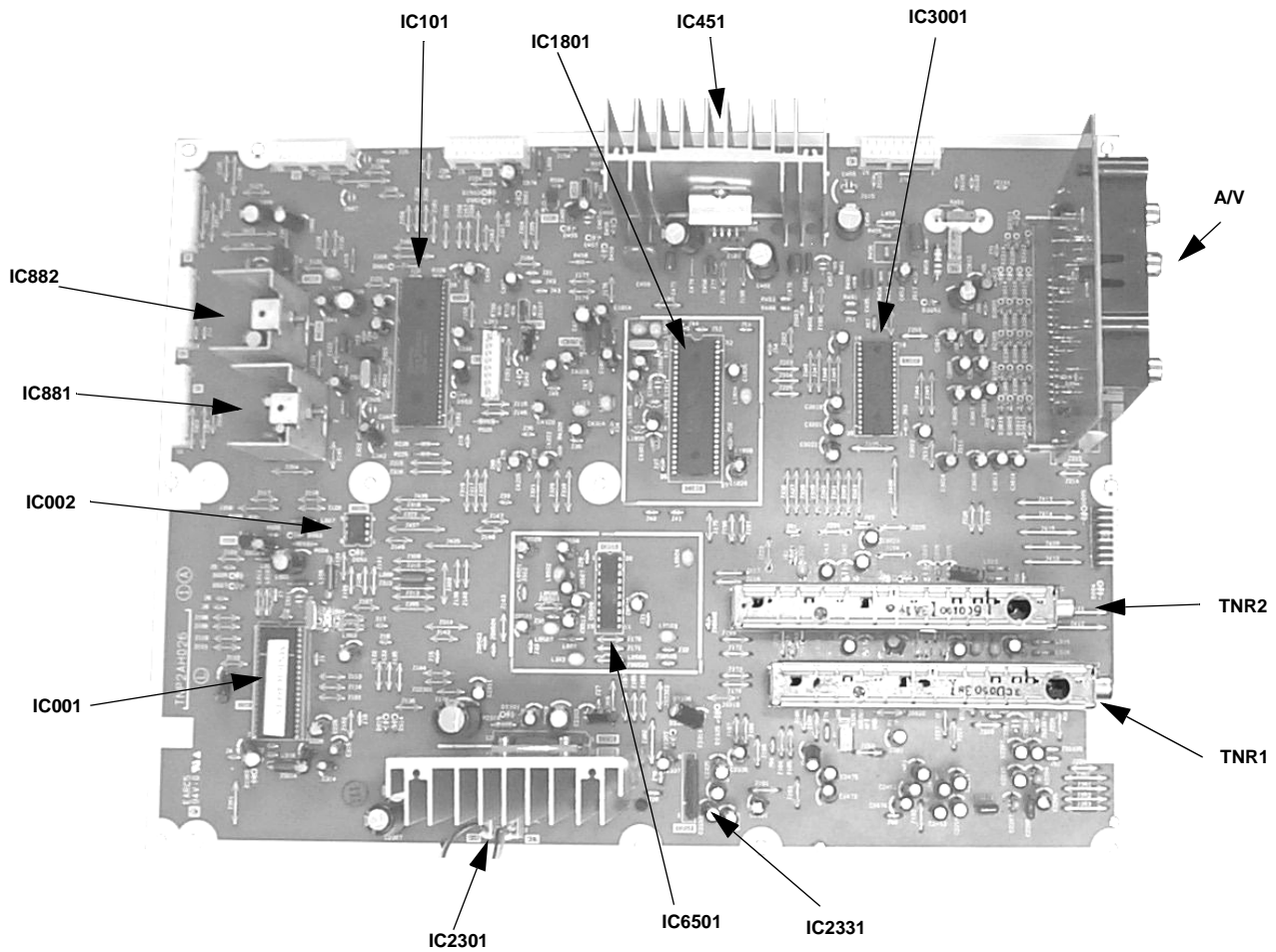


Figure 45. A-Board

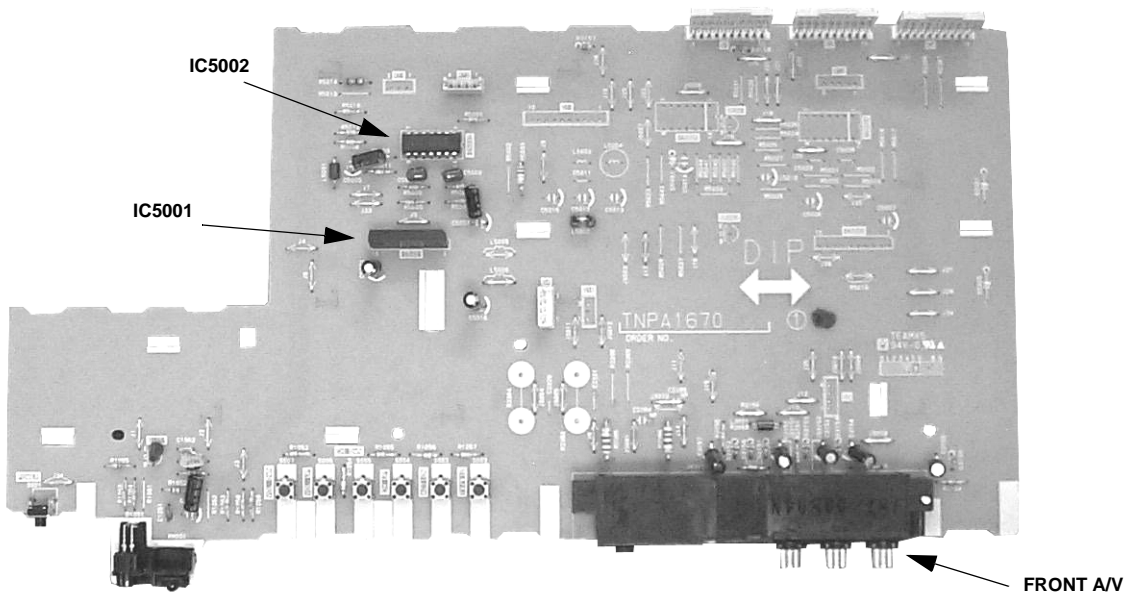


Figure 46. G-Board

Component Identification

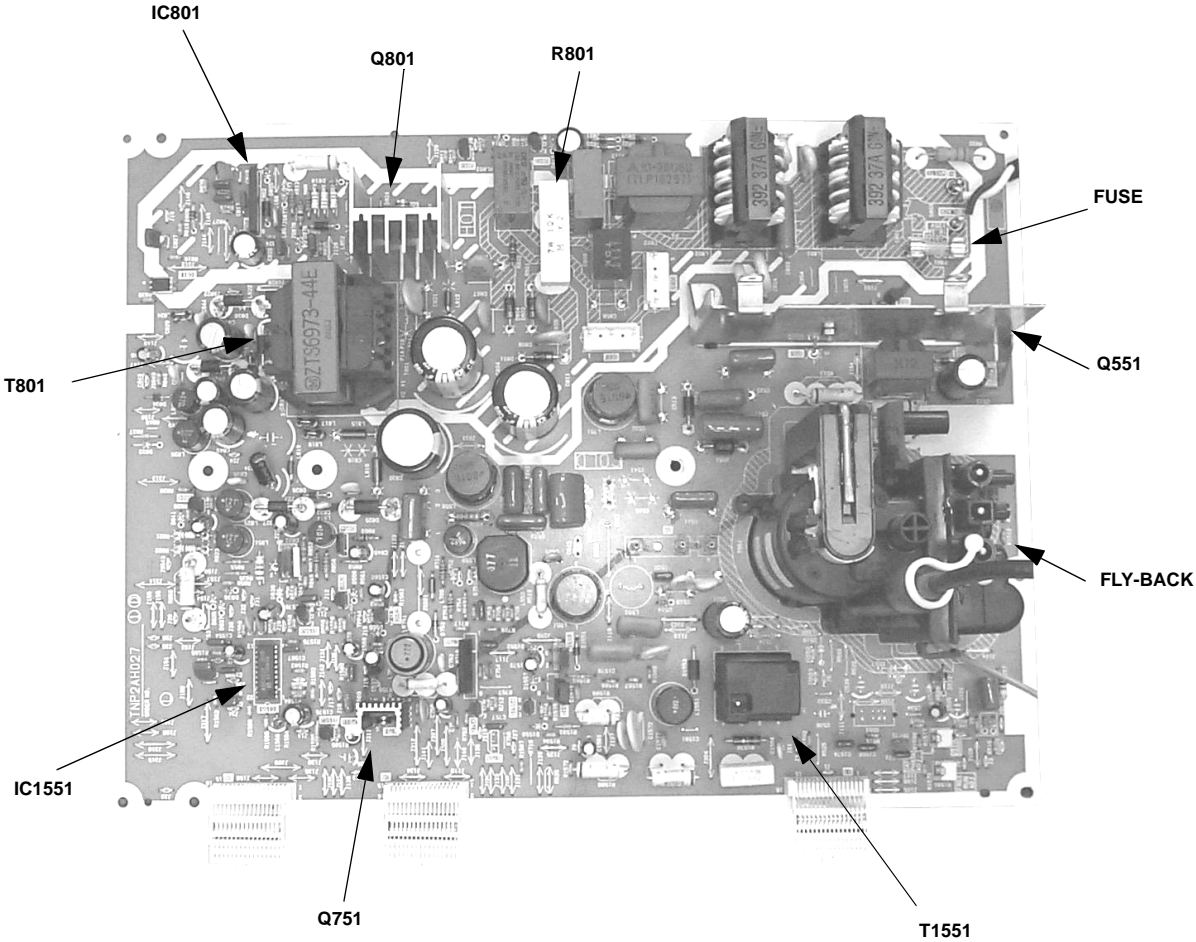


Figure 47. D-Board

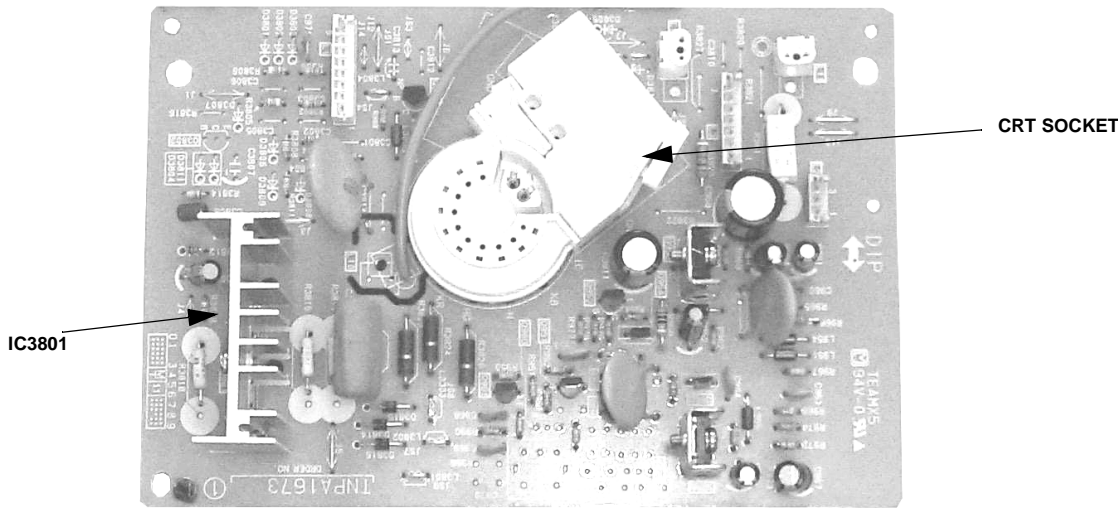


Figure 48. L-Board