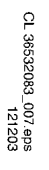
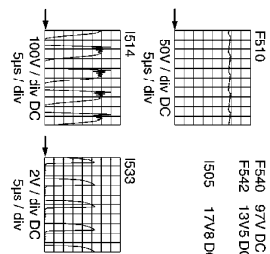


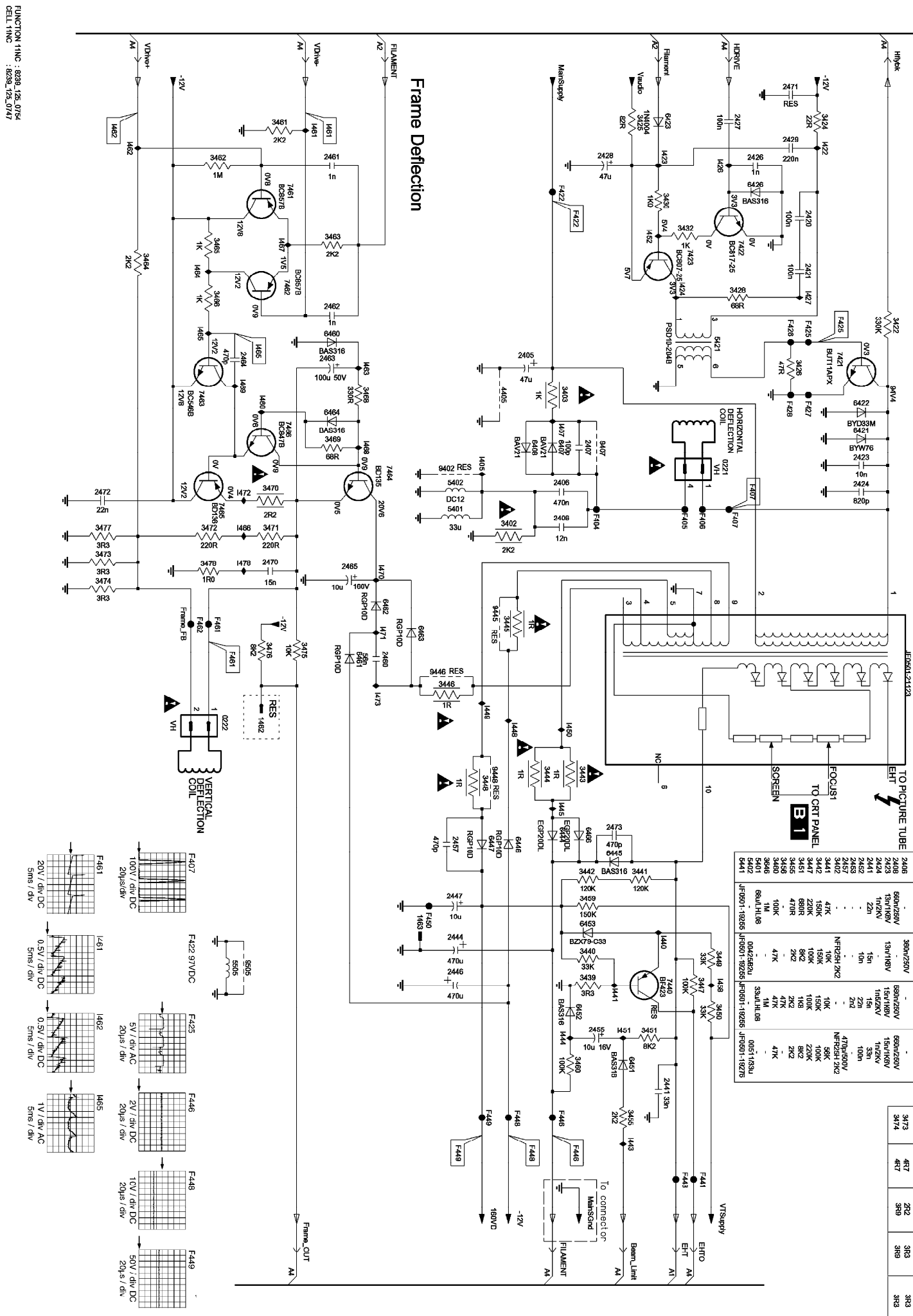
For Relay CC



ITEM	LATAM	NAFTA
2505	YES	NO
3503	NO	YES
3504	YES	NO
5500	DMF2820	C914
5502	NO	YES
9503	YES	NO
Relay Ctd.	NO	YES



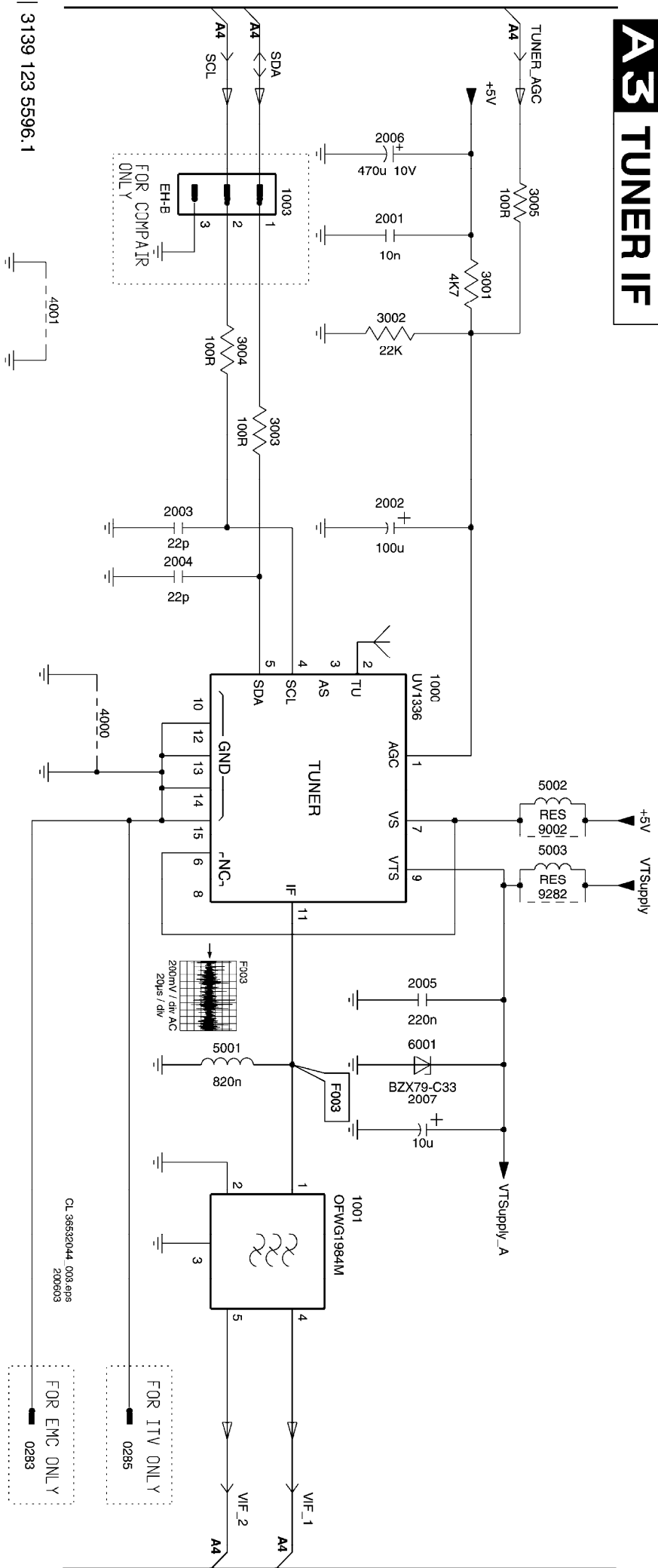
## Line Deflection



Region	14°	18°E	20°	21°SE
Site	LFD	GP	LFD	LFD
Tube	LINE DETECTION			
2406	660m/250V	360m/250V	680m/250V	660m/250V
2408	134°18'N	134°18'N	134°18'N	134°18'N
2423	17°18'N	17°18'N	17°18'N	17°18'N
2424	17°20'N	17°20'N	17°20'N	17°20'N
2425	15m	15m	22m	100m
2435	-	-	22m	-
2437	-	18°25'N 20°E	17°18'N 20°E	17°18'N 20°E
3402	-	-	-	-
3411	47°K	10°K	10°K	56°K
3412	150°K	150°K	150°K	220°K
3447	220°K	60°K	100°K	20°K
3455	47°R	2°K	2°K	2°K
3465	-	-	47°K	-
3480	100°K	47°K	47°K	47°K
5401	86m/L108	-	33m/L108	-
5402	-	-	-	-
JF0001-19205	0002-8202	JF0001-19205	JF0001-19205	0005-11530
JF0001-19206	0002-8202	JF0001-19206	JF0001-19206	0005-11530

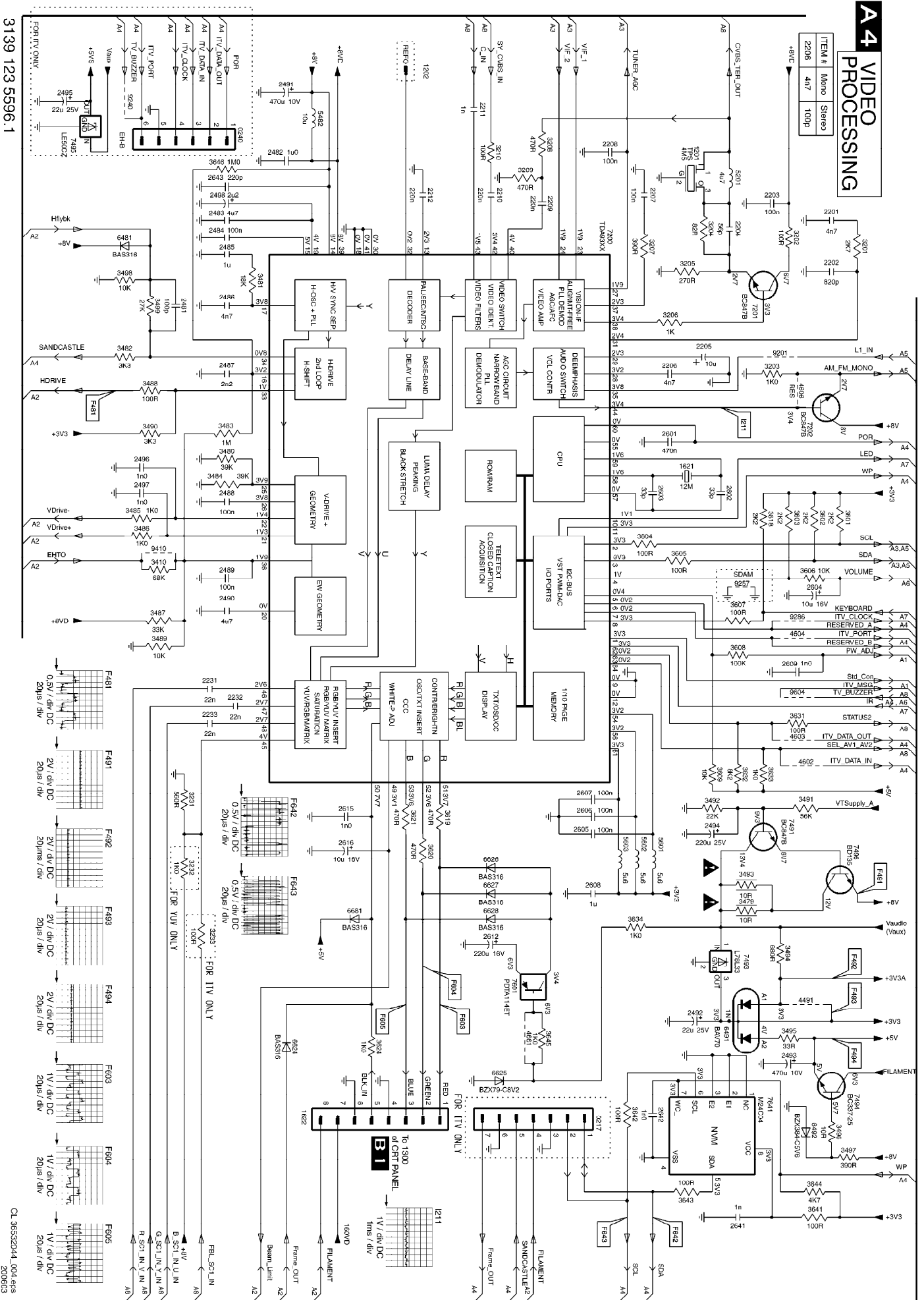
Region	L1/AM			
Slide Tube	14" LPD	18RF CPT	20" LPD	21"TSQ LPD
LINE DEFLECTION				
3473	467	2R2	3R3	3R3
3474	467	3R9	3R8	3R3

# A3 TUNER IF



# A4 VIDEO PROCESSING

ITEM #	Mono	Stereo
2206	4A7	100P

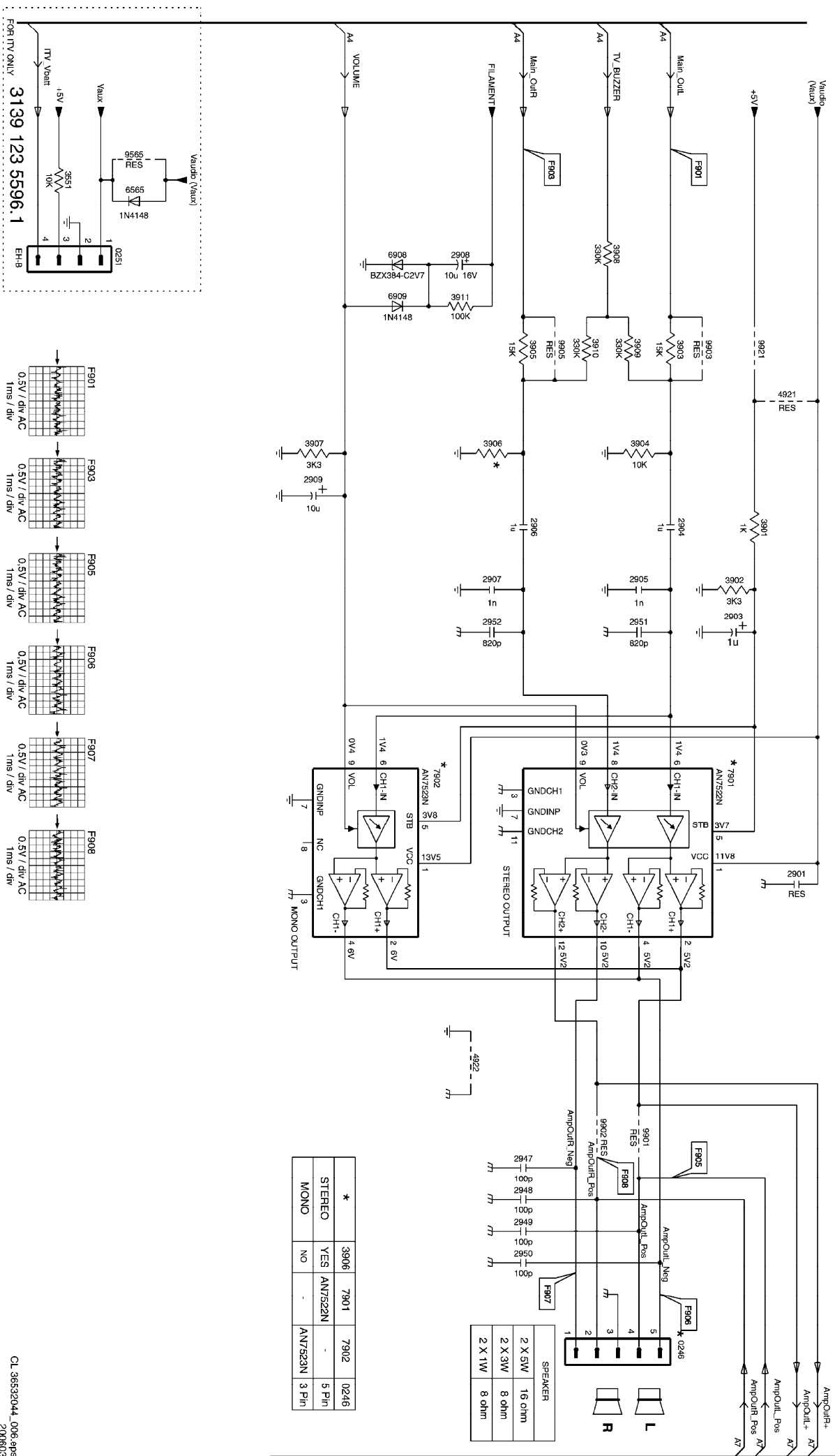


3139 123 5596.1

CL 96352044.004 gfs 2006C3



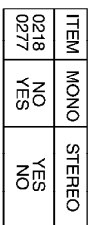
## A6 AUDIO AMPLIFIER + MONO SOUND PROCESSING



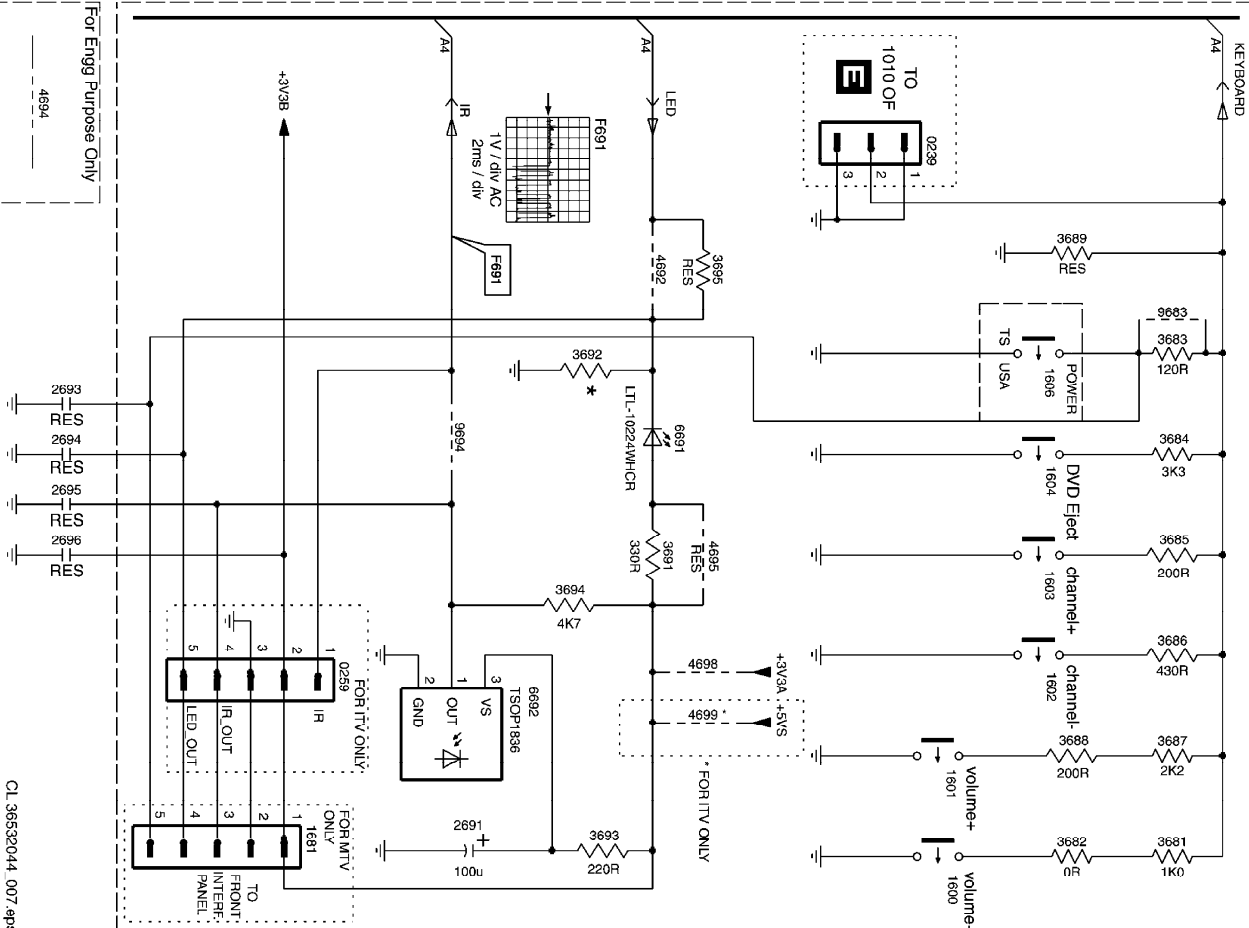
★	3906	7901	7902	0246
STEREO	YES	AN7522N	-	5 Pin
MONO	NO	-	AN7523N	3 Pin

SPEAKER	
2 X 5W	16 ohm
2 X 3W	8 ohm
2 X 1W	8 ohm

## FRONT CONTROL

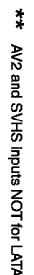


1V / div AC  
2ms / div

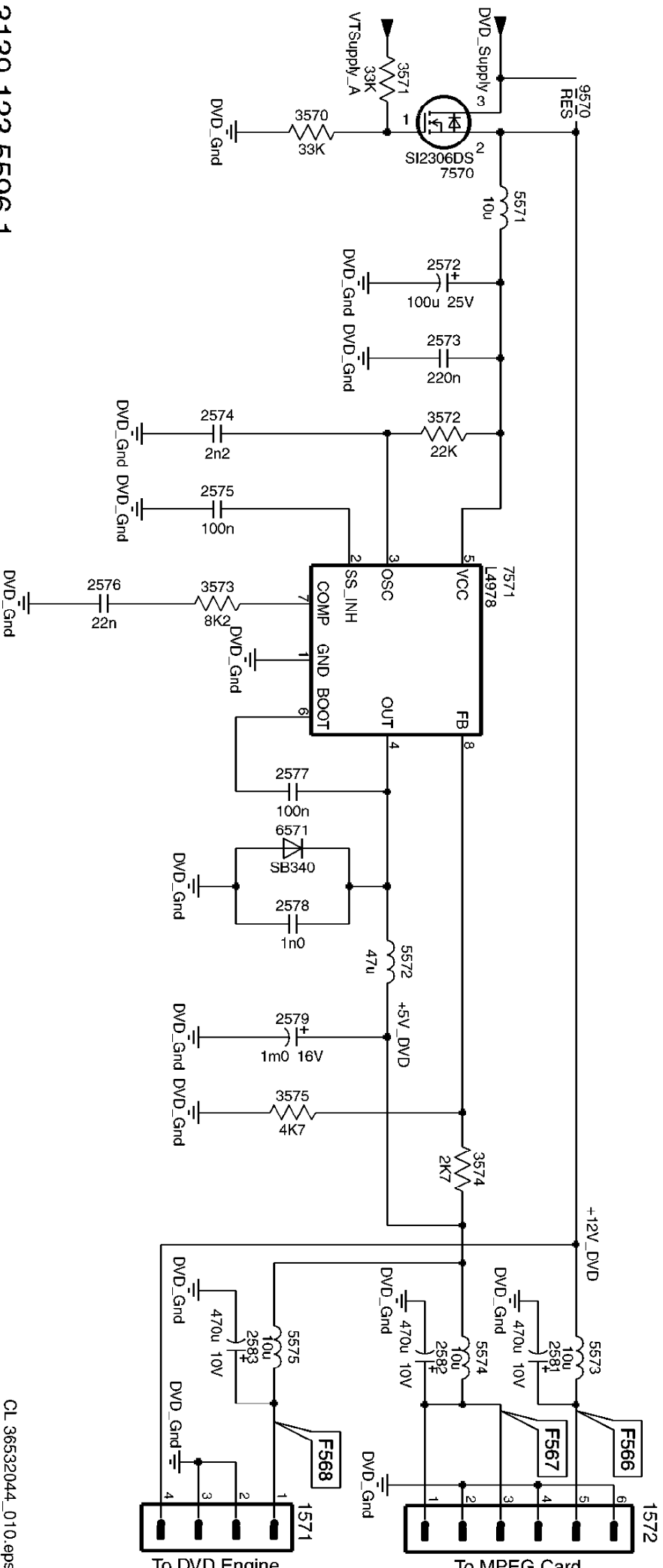




SET WITH VIDEO OUT

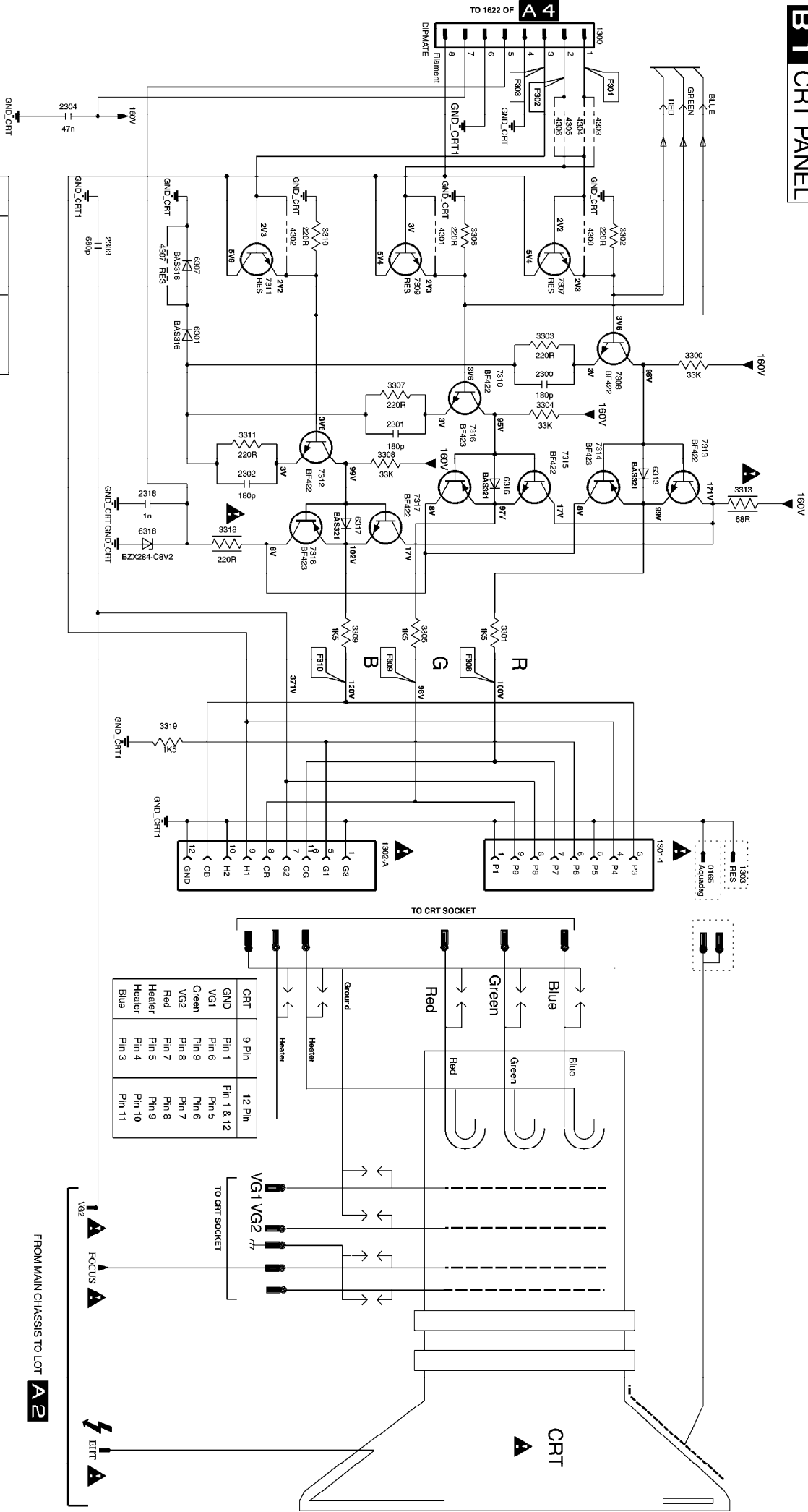


## A9 DVD POWER SUPPLY (OPTIONAL)

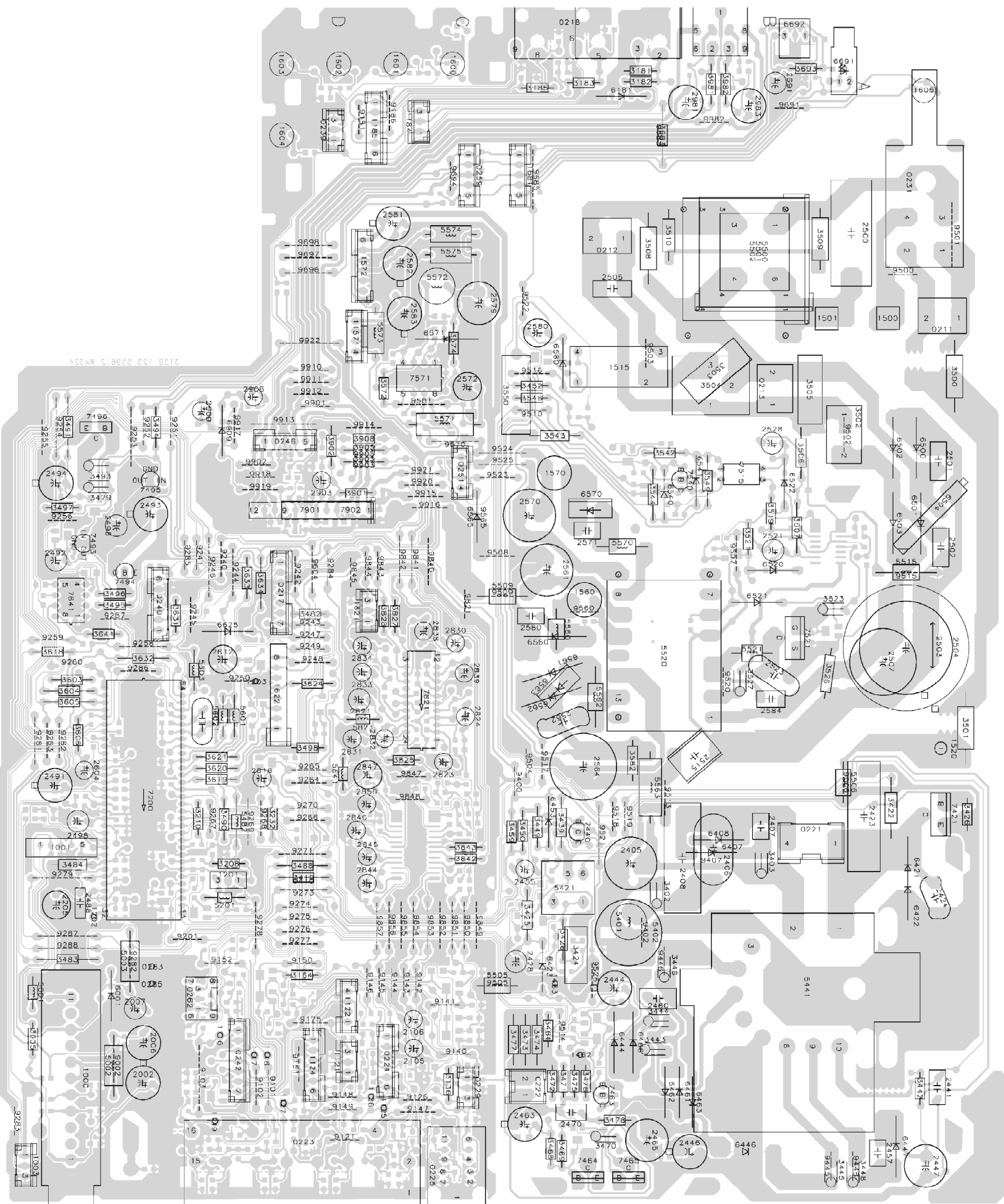


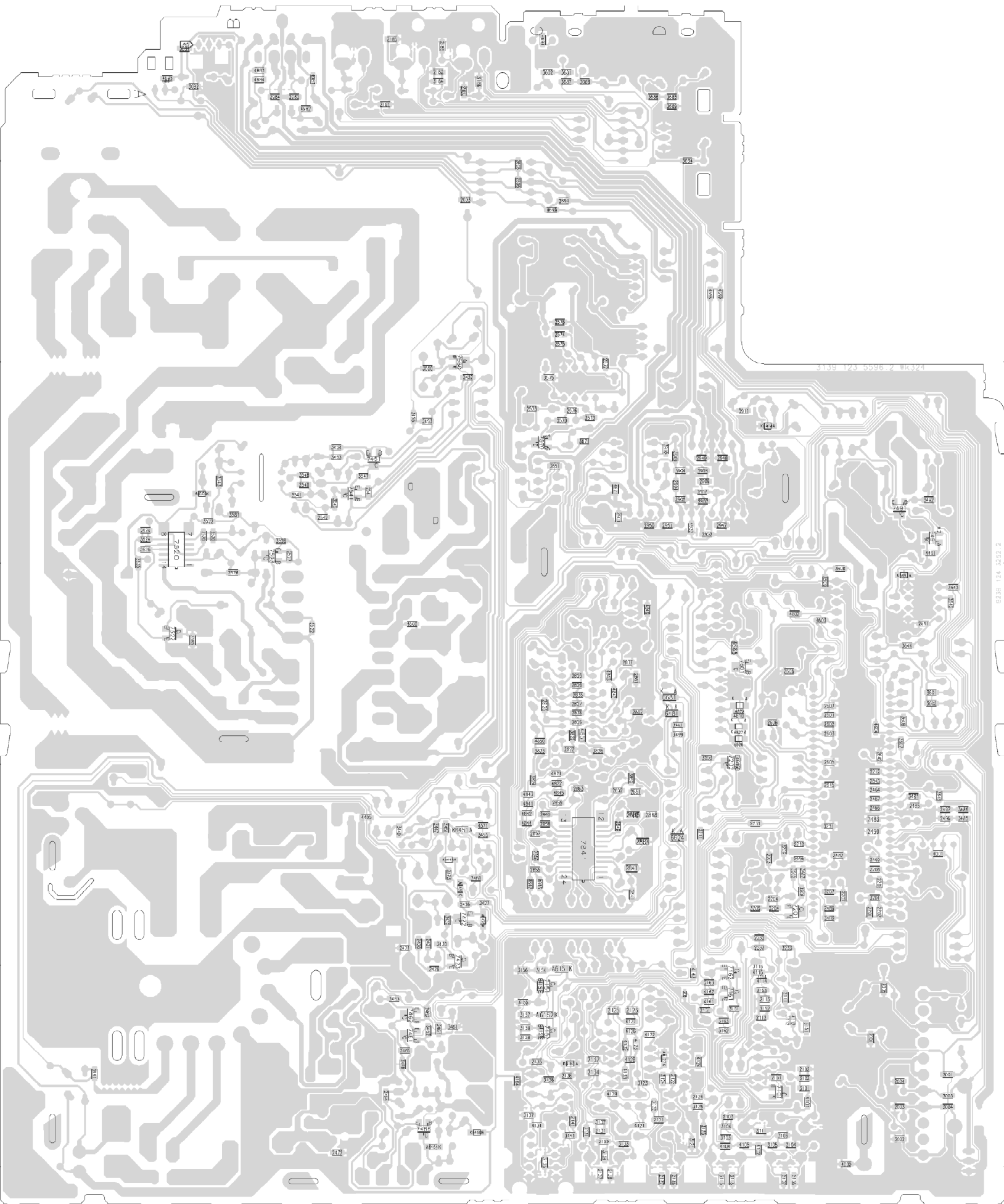
3139 123 5596.1

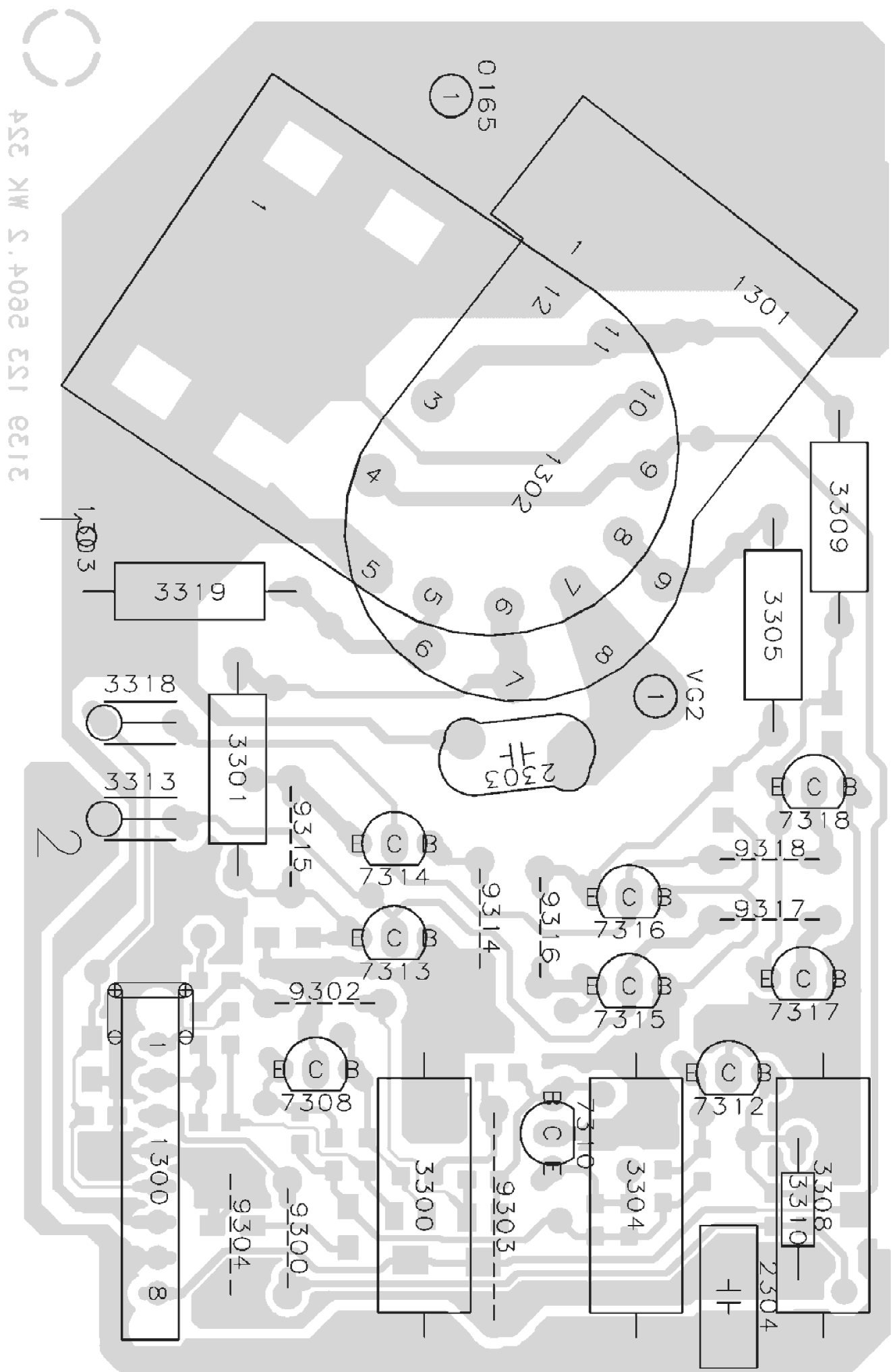
# B 1 CRT PANEL

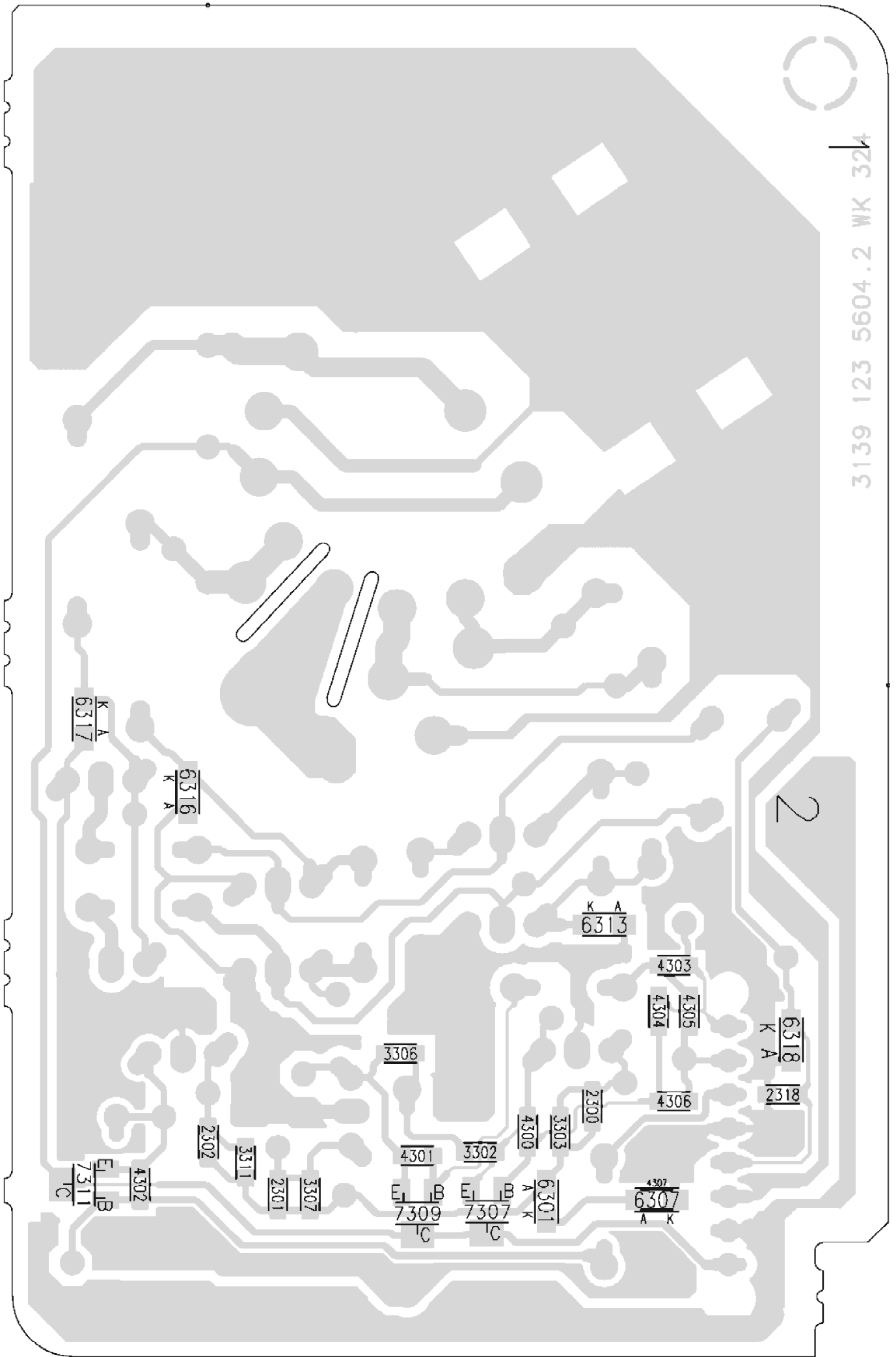


3139 123 5604.1









**This diagram not available at time of service manual production**



