

NOTE

Since this is a basic circuit diagram, the value of components and some partial connection are subject to change for improvement.

The components marked Δ conform to VDE on TEC plate-lines and are essential for the operation of the set. While these are marked Δ are recommended for better operation. Use specified parts only when replacing.

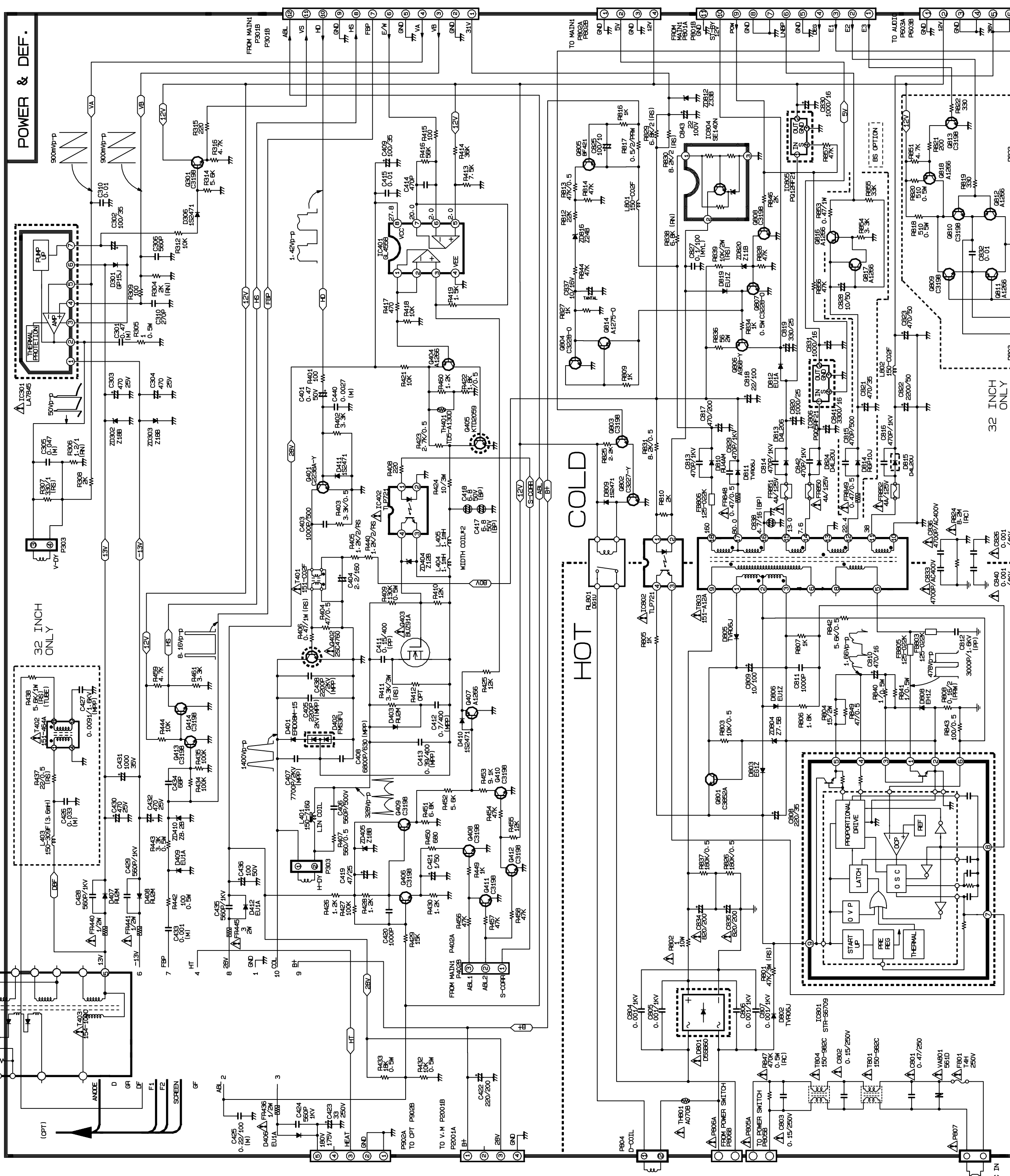
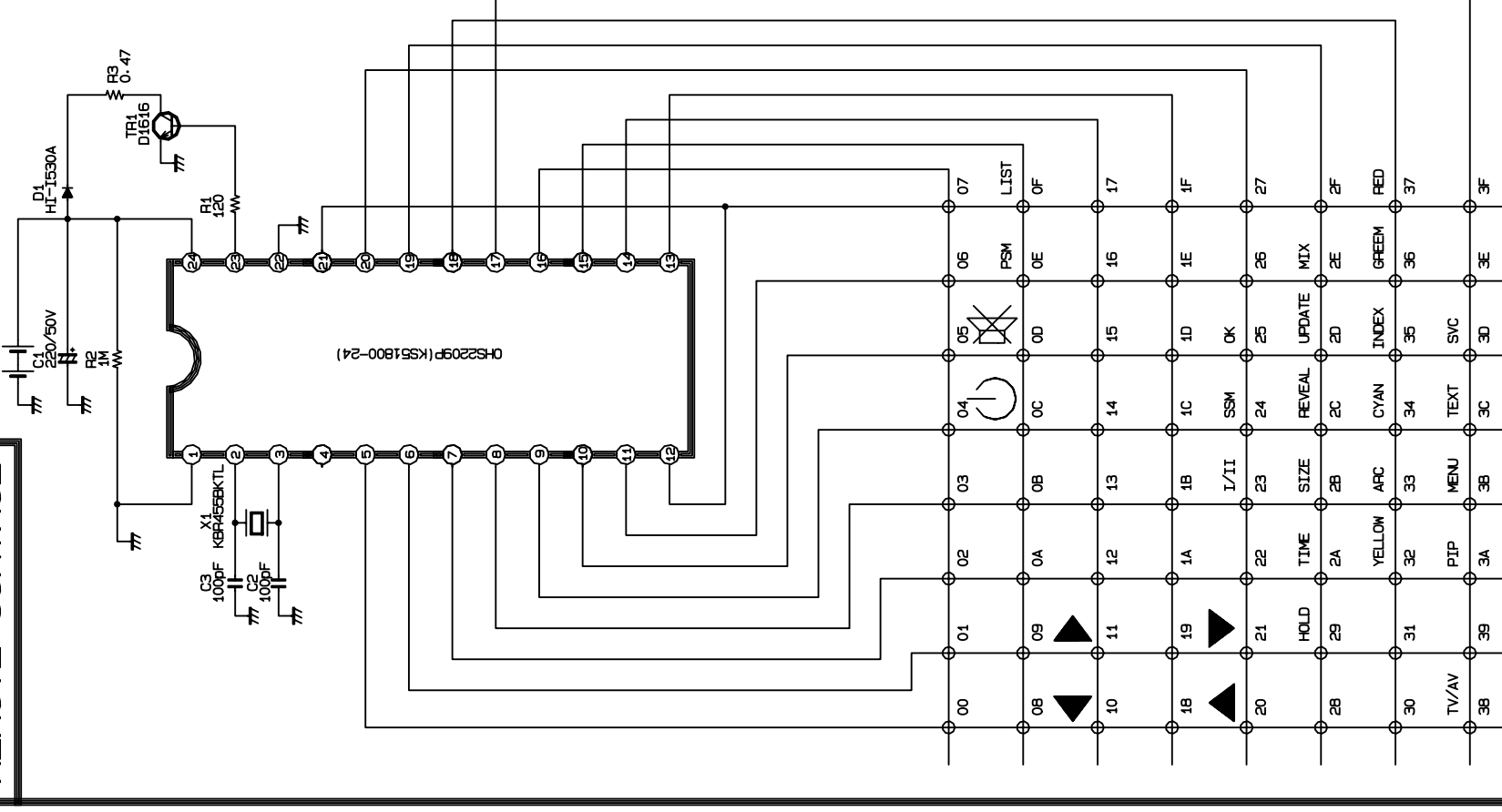
Value of resistor, capacitor and inductor

1. Resistances are shown in Ω , K=1,000, M=1,000,000.
2. Unless otherwise noted in schematic, all capacitor values less than 1 are expressed in pF and the values are then 1 in pF.
3. Unless otherwise noted in schematic, all inductor values less than 1 are expressed in μ H.

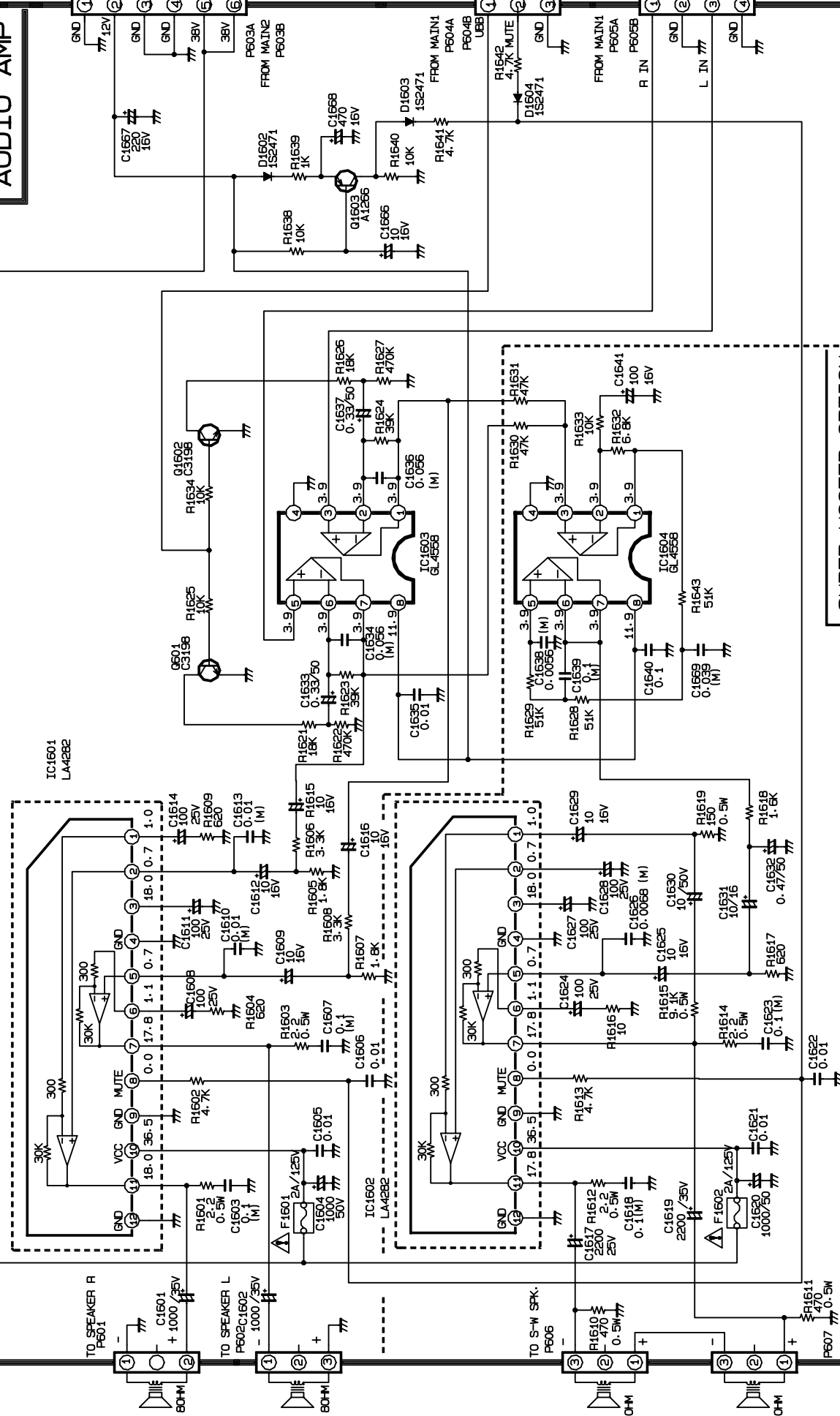
Observation of voltage and waveforms

1. Voltages with VTM from point shown to chassis ground. Line voltage is 230volts \pm 10%.
2. The schematic shown is representative only. Signal pattern is color-bar.
3. All waveforms are taken using a wide band oscilloscope and a low capacity probe.
4. Check Fine tuning, AGC, Brightness, Contrast and Colour for best picture. Make sure that colour, brightness are in mid position and contrast is in 75%.

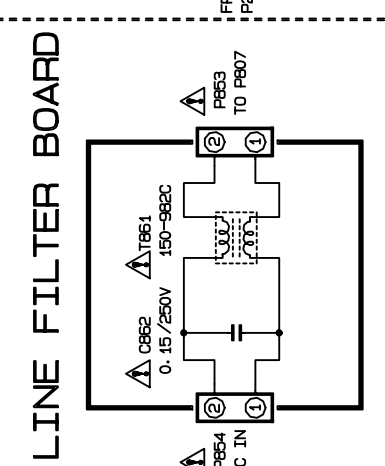
REMOTE CONTROL



AUDIO AMP



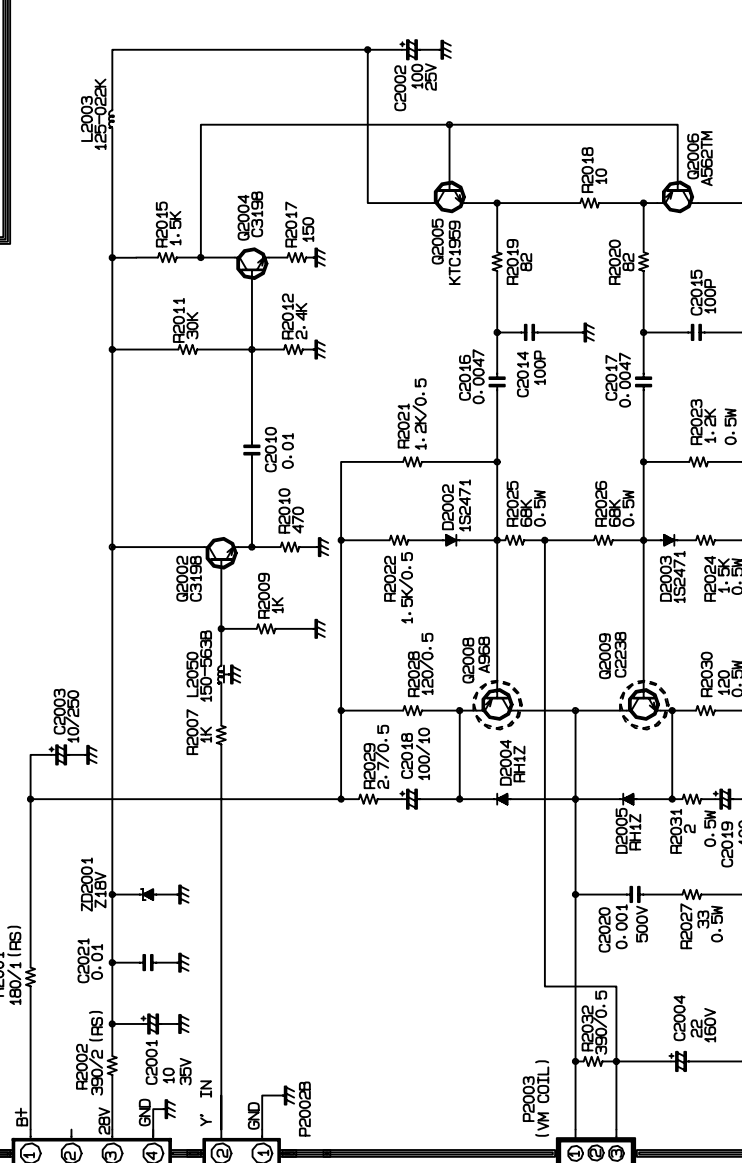
LINE FILTER BOARD



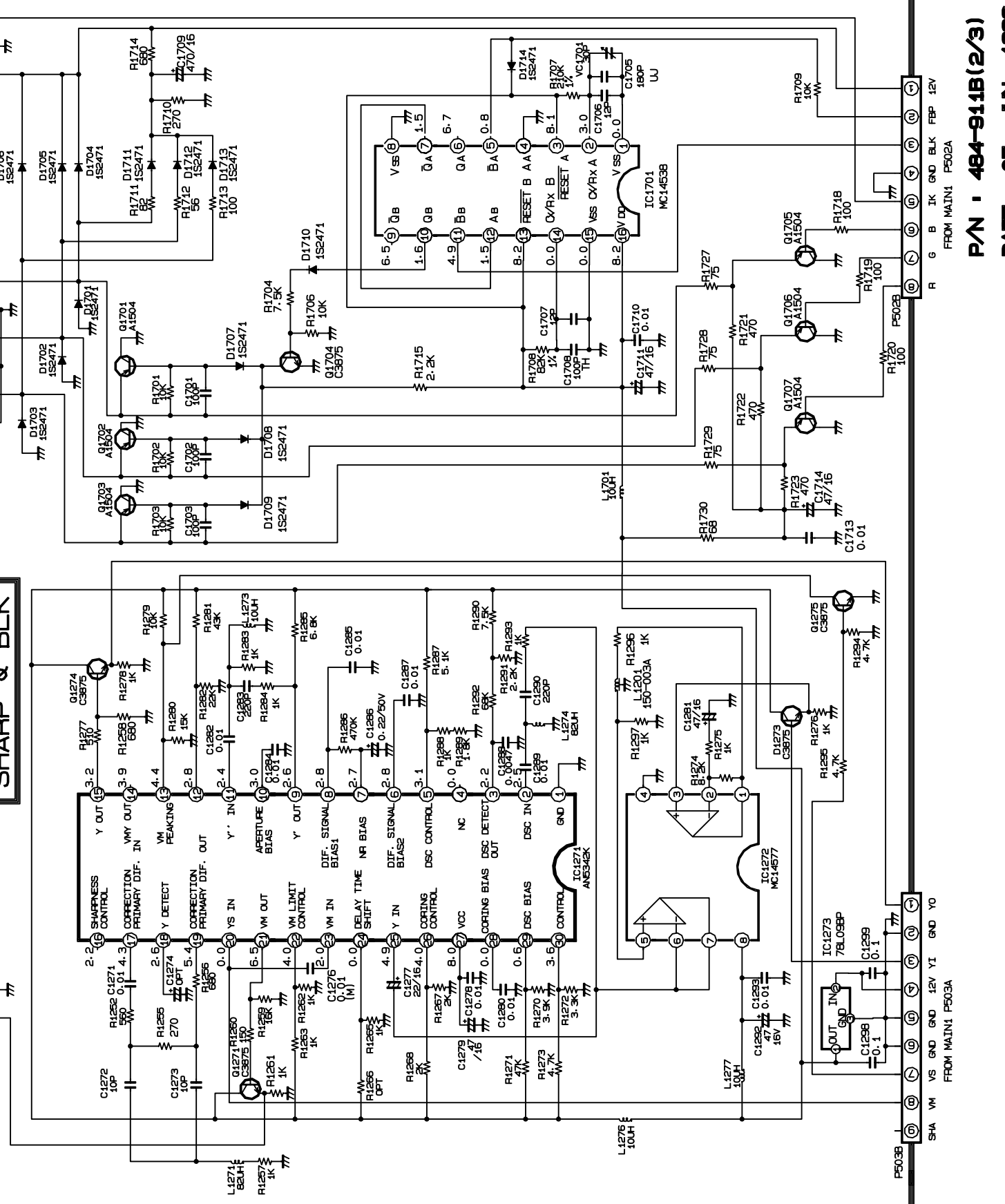
INCH CONVERSION

REF. NO	2F	3F
1403	6174Z-E103J	15F-100C
1503	6174Z-E103J	15F-100C
1603	6174Z-E103J	15F-100C
1703	6174Z-E103J	15F-100C
1803	6174Z-E103J	15F-100C
1903	6174Z-E103J	15F-100C
2003	6174Z-E103J	15F-100C
2103	6174Z-E103J	15F-100C
2203	6174Z-E103J	15F-100C
2303	6174Z-E103J	15F-100C
2403	6174Z-E103J	15F-100C
2503	6174Z-E103J	15F-100C
2603	6174Z-E103J	15F-100C
2703	6174Z-E103J	15F-100C
2803	6174Z-E103J	15F-100C
2903	6174Z-E103J	15F-100C
3003	6174Z-E103J	15F-100C
3103	6174Z-E103J	15F-100C
3203	6174Z-E103J	15F-100C
3303	6174Z-E103J	15F-100C
3403	6174Z-E103J	15F-100C
3503	6174Z-E103J	15F-100C
3603	6174Z-E103J	15F-100C
3703	6174Z-E103J	15F-100C
3803	6174Z-E103J	15F-100C
3903	6174Z-E103J	15F-100C
4003	6174Z-E103J	15F-100C
4103	6174Z-E103J	15F-100C
4203	6174Z-E103J	15F-100C
4303	6174Z-E103J	15F-100C
4403	6174Z-E103J	15F-100C
4503	6174Z-E103J	15F-100C
4603	6174Z-E103J	15F-100C
4703	6174Z-E103J	15F-100C
4803	6174Z-E103J	15F-100C
4903	6174Z-E103J	15F-100C
5003	6174Z-E103J	15F-100C
5103	6174Z-E103J	15F-100C
5203	6174Z-E103J	15F-100C
5303	6174Z-E103J	15F-100C
5403	6174Z-E103J	15F-100C
5503	6174Z-E103J	15F-100C
5603	6174Z-E103J	15F-100C
5703	6174Z-E103J	15F-100C
5803	6174Z-E103J	15F-100C
5903	6174Z-E103J	15F-100C
6003	6174Z-E103J	15F-100C
6103	6174Z-E103J	15F-100C
6203	6174Z-E103J	15F-100C
6303	6174Z-E103J	15F-100C
6403	6174Z-E103J	15F-100C
6503	6174Z-E103J	15F-100C
6603	6174Z-E103J	15F-100C
6703	6174Z-E103J	15F-100C
6803	6174Z-E103J	15F-100C
6903	6174Z-E103J	15F-100C
7003	6174Z-E103J	15F-100C
7103	6174Z-E103J	15F-100C
7203	6174Z-E103J	15F-100C
7303	6174Z-E103J	15F-100C
7403	6174Z-E103J	15F-100C
7503	6174Z-E103J	15F-100C
7603	6174Z-E103J	15F-100C
7703	6174Z-E103J	15F-100C
7803	6174Z-E103J	15F-100C
7903	6174Z-E103J	15F-100C
8003	6174Z-E103J	15F-100C
8103	6174Z-E103J	15F-100C
8203	6174Z-E103J	15F-100C
8303	6174Z-E103J	15F-100C
8403	6174Z-E103J	15F-100C
8503	6174Z-E103J	15F-100C
8603	6174Z-E103J	15F-100C
8703	6174Z-E103J	15F-100C
8803	6174Z-E103J	15F-100C
8903	6174Z-E103J	15F-100C
9003	6174Z-E103J	15F-100C
9103	6174Z-E103J	15F-100C
9203	6174Z-E103J	15F-100C
9303	6174Z-E103J	15F-100C
9403	6174Z-E103J	15F-100C
9503	6174Z-E103J	15F-100C
9603	6174Z-E103J	15F-100C
9703	6174Z-E103J	15F-100C
9803	6174Z-E103J	15F-100C
9903	6174Z-E103J	15F-100C
1003	6174Z-E103J	15F-100C

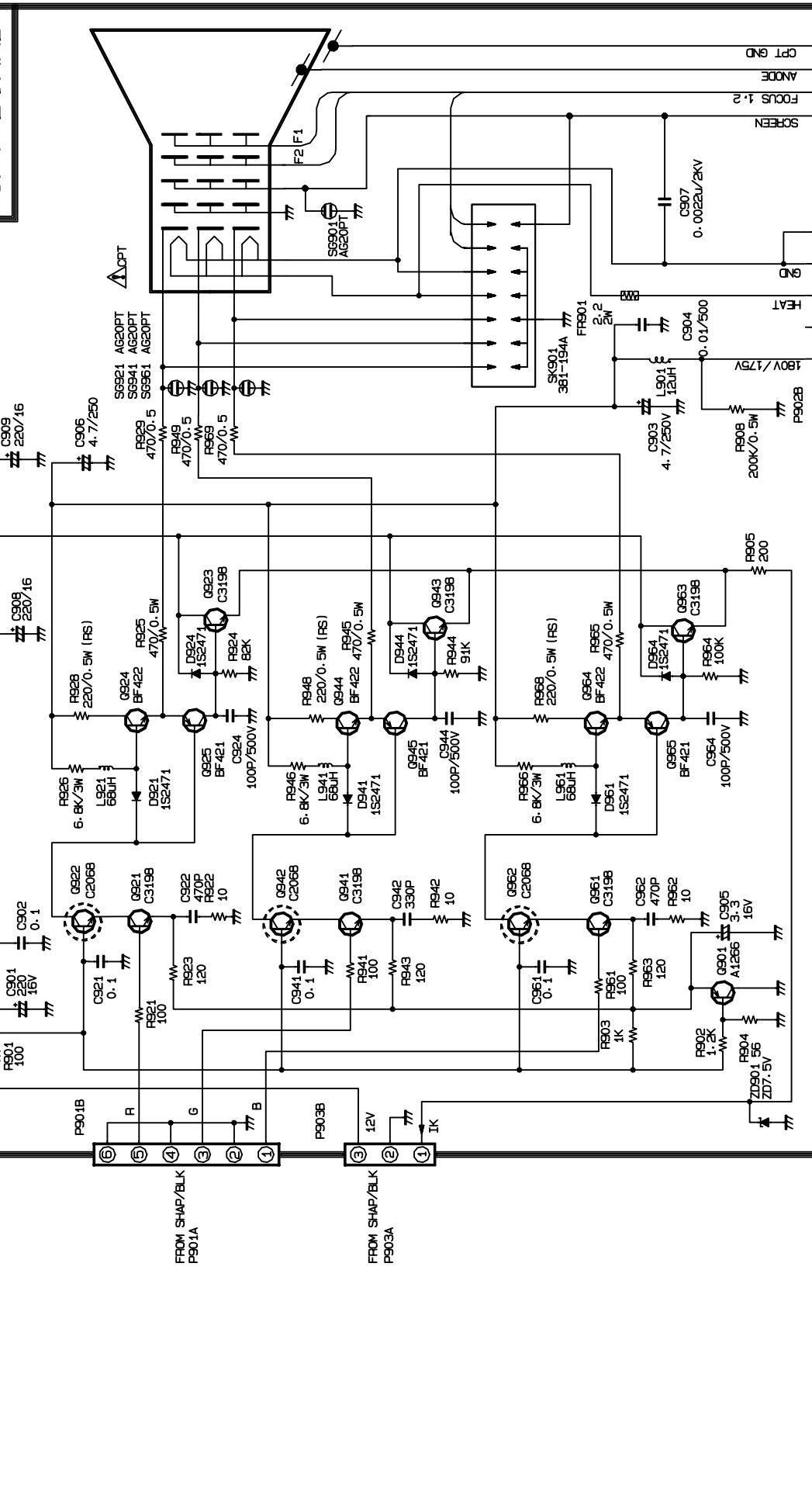
VM BOARD



SHARP & BLK



CPT BOARD



SUPER WOOFER OPTION

