

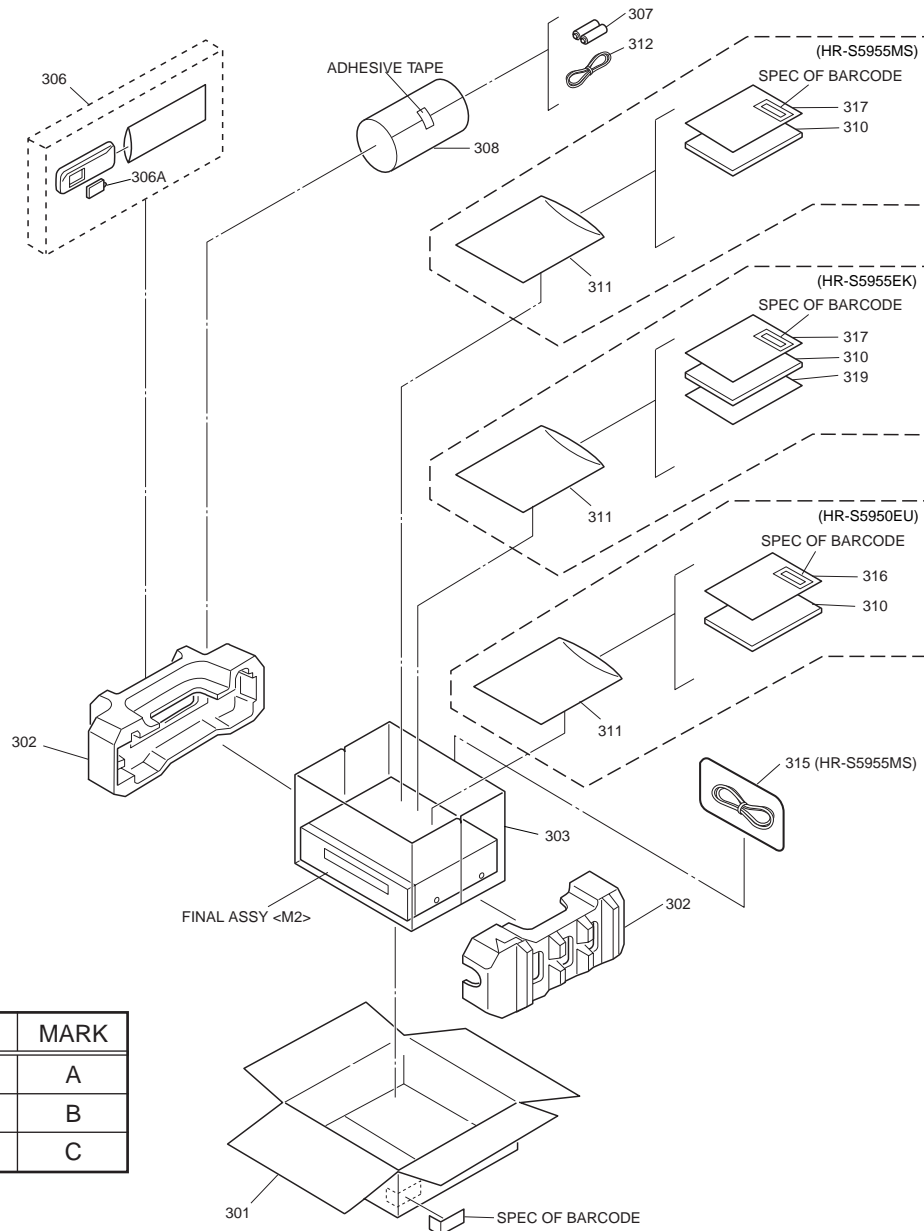
SECTION 5 PARTS LIST

SAFETY PRECAUTION

Parts identified by the ⚠ symbol are critical for safety. Replace only with specified part numbers.

5.1 PACKING AND ACCESSORY ASSEMBLY <M1>

The instruction manual to be provided with this product will differ according to the destination.



MODEL	MARK
HR-S5950EU	A
HR-S5955EK	B
HR-S5955MS	C

⚠ REF No. PART No. PART NAME, DESCRIPTION

PACKING AND ACCESSORY ASSEMBLY <M1>

301	LP30855-004A	PACKING CASE
302	LP30909-001C	CUSHION ASSY
303	PQM30021-93	POLY BAG
306	LP20878-014A	REMOTE CONTROLLER
306A	LP40610-003A	COVER(BATTERY)
307	-	BATTERY,X2("R6"TYPE)
308	QPC02202230P	POLY BAG
⚠ 310	LPT0649-001B	INST.BOOK(EN),A
⚠	LPT0649-002B	INST.BOOK(GE),A
⚠	LPT0649-003A	INST.BOOK(FR),A
⚠	LPT0649-004A	INST.BOOK(DU),A
⚠	LPT0649-005A	INST.BOOK(SP),A
⚠	LPT0649-006A	INST.BOOK(IT),A

⚠ REF No. PART No. PART NAME, DESCRIPTION

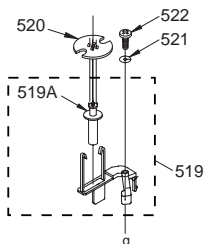
⚠	LPT0649-007A	INST.BOOK(DA),A
⚠	LPT0649-008A	INST.BOOK(FI),A
⚠	LPT0649-009A	INST.BOOK(SW),A
⚠	LPT0649-010A	INST.BOOK(NO),A
⚠	LPT0649-011A	INST.BOOK(PT),A
⚠	LPT0649-012A	INST.BOOK(GR),A
⚠	LPT0649-013A	INST.BOOK(CZ),A
⚠	LPT0649-014A	INST.BOOK(PO),A
⚠	LPT0649-015A	INST.BOOK(HU),A
⚠	LPT0653-001A	INST.BOOK(EN),B
⚠	LPT0657-001A	INST.BOOK(FR),C
311	QPC02503530P	POLY BAG
312	PEAC0300-02	RF CABLE
315	QAM0238-003	PERI CABLE,C
316	BT-54013-2	WARRANTY CARD,A
317	BT-54008-2	GUARANTY CARD,B,C
319	LYT0194-001B	Q.CARD(JUK),B

5.2 FINAL ASSEMBLY <M2>

BEWARE OF BOGUS PARTS

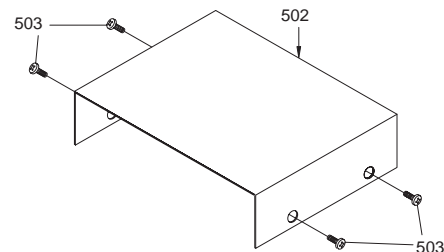
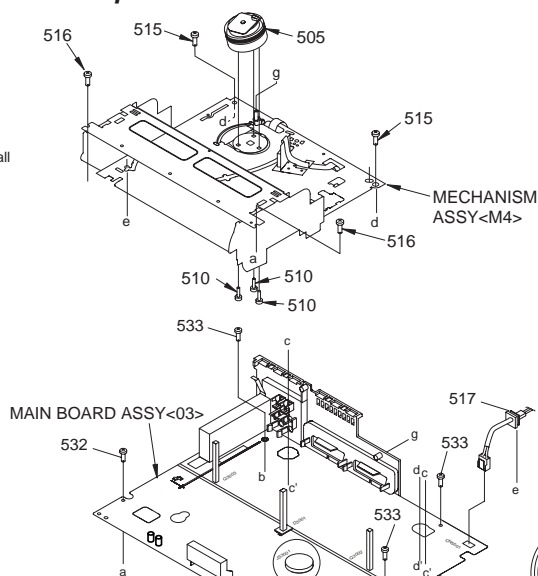
Parts that do not meet specifications may cause trouble in regard to safety and performance. We recommend that genuine JVC parts be used.

NOTE) INERTIA PLATE should be attached so as to ser small diameter of central round hole above.

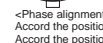
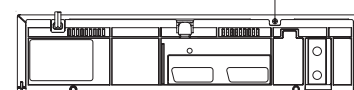


NOTE) When attaching ROLLER ARM ASS'Y, attach the hook(L3c) before the spring(P3a).

NOTE) After attached ROLLER ARM ASS'Y, tighten screw(S3g) with slit washer(W3a).

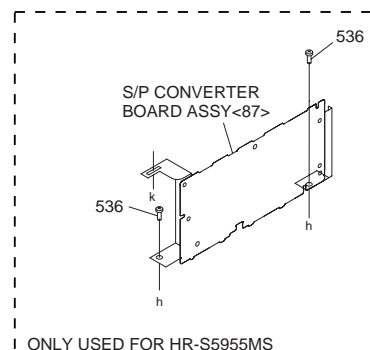


REAR SIDE



<Phase alignment>
Accord the position of V gap on R. Encoder and PWB silk "4".
Accord the position of Boss on R. Encoder and PWB silk "4".

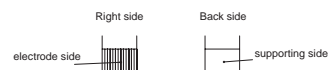
For the prevention of the DRUM FPC damage.
When you attach the MECHA UNIT on B. CHASSIS.
Attach the MECHA UNIT after the positioning boss "z" of the B. CHASSIS is matched to the positioning hole of the MECHA UNIT.



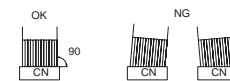
ONLY USED FOR HR-S5955MS

NOTE

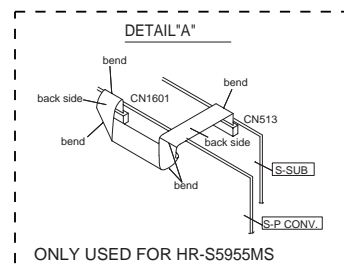
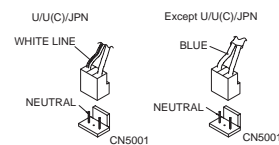
1. Insert direction of FCC WIRE as follows.



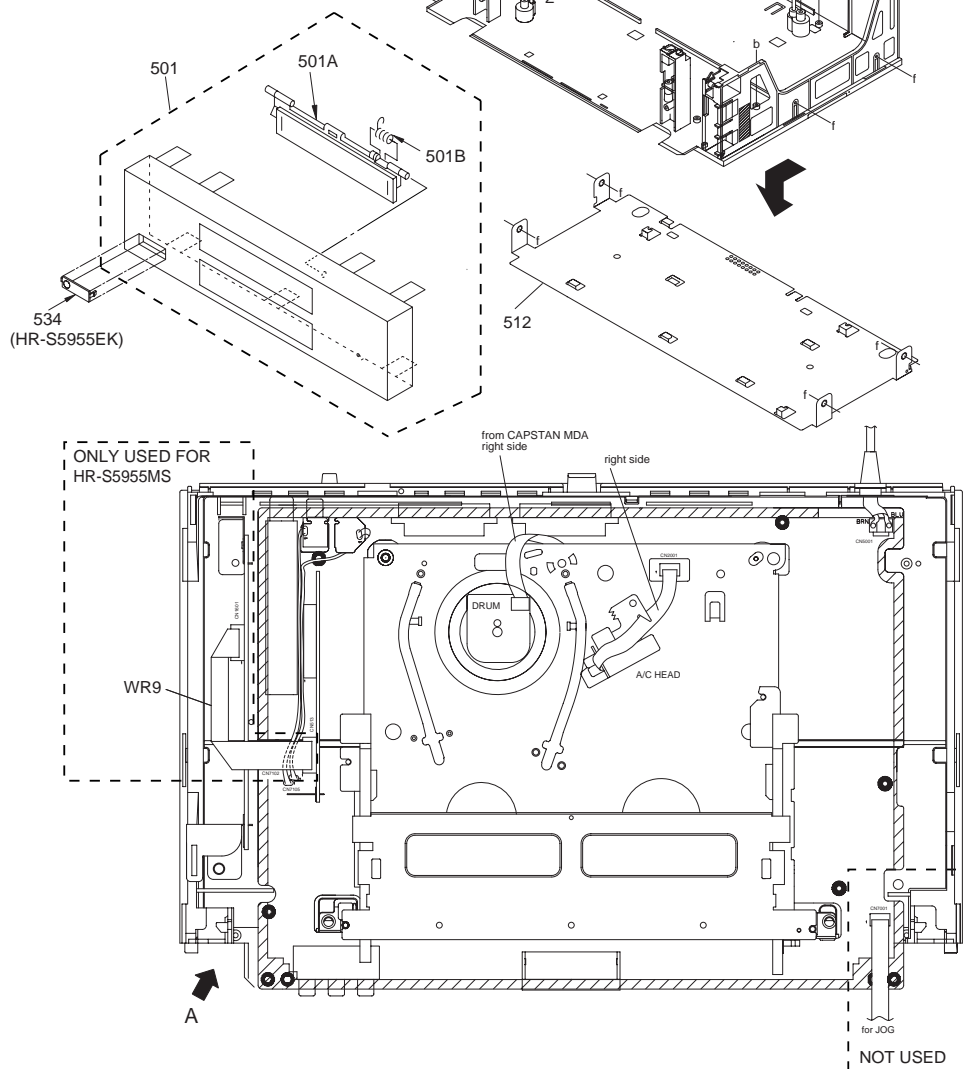
2. FFC WIRE and DRUM FPC WIRE should be insert as follows.



3. Insert direction of POWER CORD.



ONLY USED FOR HR-S5955MS



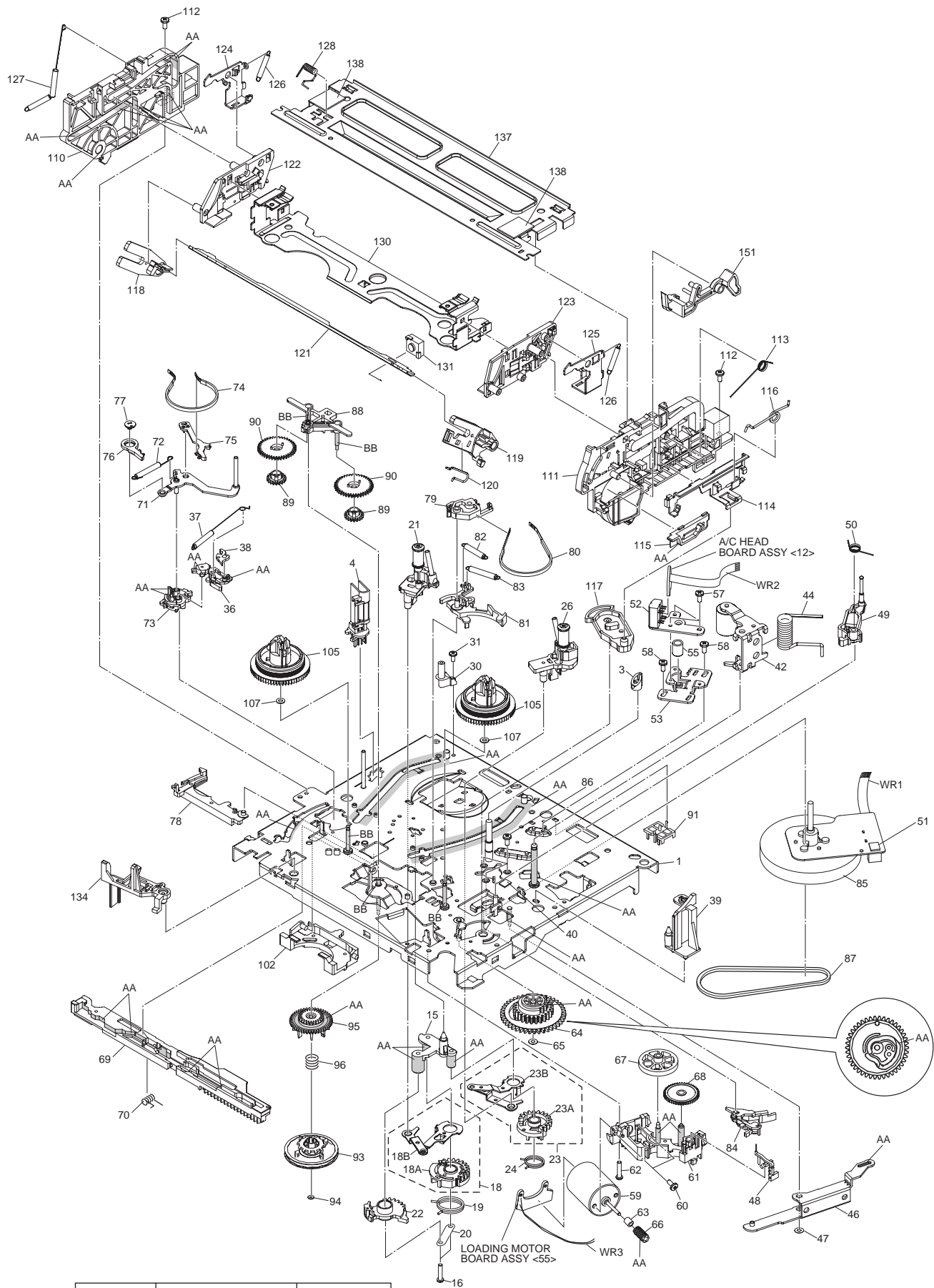
▲ REF No. PART No. PART NAME, DESCRIPTION

FINAL ASSEMBLY <M2>

▲	501	LP10434-007E	FRONT PANEL ASSY,A
▲		LP10434-008F	FRONT PANEL ASSY,B
▲		LP10434-009E	FRONT PANEL ASSY,C
	501A	LP20961-015D	CASSETTE DOOR
	501B	PQ46448	TORSION SPRING
▲	502	LP10013-051B	TOP COVER
	503	QYTDSF3010R	SCREW,X4,TOP COVER(SIDE)
	504	QYTDSF3010M	SCREW,TOP COVER(REAR)
	505	PDV2544A	DRUM ASSY
	510	QYSPSPD3008Z	SCREW,X3,DRUM
▲	511	LP10108-001H	BOTTOM CHASSIS
▲	512	LP10014-002C	BOTTOM COVER
	515	QYTDSF4012Z	SCREW,X2,MECHA
	516	QYSPSFG3010Z	SCREW,X2,MECHA
▲	517	QMP4A10-170	POWER CORD,A,C
▲		QMP51K0-170-K	POWER CORD,B
	519	LP40370-001F	ROLLER ARM ASSY
	519A	PDM4311A-1	ROLLER ASSY
	520	PQ45160	INERTIA PLATE
	521	PQM30017-51	SLIT WASHER
	522	QYSLSF2060D	SCREW
	523	QYTDSF3010M	SCREW,T.BOARD
	532	QYTDSF3010Z	SCREW,MAIN
	533	DPSF3010Z	SCREW,X3,MAIN
	534	LP30871-003B	CAP(JACK),B
	536	QYTDSF3008Z	SCREW,X2,P/S CONV.,C
	WR9	QUQU112-1115CG	FFC WIRE,P/S CONV.CN513,C

▲ REF No. PART No. PART NAME, DESCRIPTION

5.3 MECHANISM ASSEMBLY <M4>



Classification	Part No.	Symbol in drawing
Grease	KYODO-SH-JB	AA
Oil	COSMO-HV56	BB

NOTE:The section marked in AA and BB indicate lubrication and greasing areas.

#	△	REF No.	PART No.	PART NAME, DESCRIPTION	#	△	REF No.	PART No.	PART NAME, DESCRIPTION

MECHANISM ASSEMBLY <M4>									
1			LP21039-001R	MAIN DECK ASSY	81			LP30969-002A	BRAKE LEVER
3			LP40097-002D	GUIDE POLE CAP	82			LP30003-033B	TENSION SPRING
4			QAH0082-001	FULL ERASE HEAD	83			LP30003-035B	TENSION SPRING
15			LP30958-001B	LOAD.GEAR BASE	84			LP40825-001B	CAPSTAN BRAKE ASSY
16			QYTPST2620Z	SCREW,X2	△ 85			QAR0204-002	CAPSTAN MOTOR
18			LP40798-001A	LOAD.GEAR(SUPPLY)ASSY	86			QYTDST2606M	SCREW,X3
18A			LP21040-001A	LOAD.GEAR(SUPPLY)	87			LP30005-010A	BELT,CAPSTAN MOTOR
18B			LP40799-001A	LOAD.ARM(SUPPLY)ASSY	88			LP30970-001A	IDLER ARM
19			LP40837-001A	TORSION SPRING(SUPPLY)	89			LP40828-004A	IDLER GEAR 1,X2
20			LP40903-001A	FIXING PLATE	90			LP40829-001B	IDLER GEAR 2,X2
21			LP40806-001D	POLE BASE ASSY(SUPPLY)	91			LP31014-001A	WIRE HOLDER
22			LP30959-002A	LOAD GEAR	93			LP40934-001B	CLUTCH UNIT
23			LP40802-001B	LOAD.GEAR(TAKE UP)ASSY	94			PQM30017-47	SLIT WASHER
23A			LP21041-001B	LOAD.GEAR(TAKE UP)	95			LP30973-001A	DIRECT GEAR
23B			LP40803-001A	LOAD.ARM(TAKE UP)ASSY	96			LP40939-001A	COMP. SPRING
24			LP40838-001A	TORSION SPRING(TAKE UP)	102			LP30974-001B	CHANGE LEVER
26			LP40808-001E	POLE BASE ASSY(TAKE UP)	105			LP21049-001A	REEL DISK,X2
30			LP31020-004A	ARM BASE	107			LP30017-004A	SPACER,X2
31			QYTDST2606Z	SCREW	110			LP10401-001F	SIDE FRAME(L)
36			LP21055-001E	TU LEVER	111			LP10402-001G	SIDE FRAME(R)
37			LP40943-001A	TENSION SPRING	112			QYTDST2606Z	SCREW,X2
38			LP40859-001D	T-UP HEAD	113			LP40917-001D	TORSION SPRING
39			LP30961-001C	LID GUIDE	114			LP30976-001E	SIDE PLATE
40			LP30002-0B7A	SPACER	115			LP30977-002D	LIMIT PLATE
42			LP40810-001A	PINCH ROLLER ARM ASSY	116			LP40846-001C	LIMIT SPRING
44			LP40840-001D	TORSION SPRING	117			LP31100-001B	DRIVE LEVER
46			LP30963-001B	PRESS LEVER	118			LP30978-001B	DRIVE ARM(L)
47			PQM30017-24	SLIT WASHER	119			LP30979-001H	DRIVE ARM(R)
48			LP40930-002E	S-SWITCH	120			LP40847-001B	TORSION SPRING
49			LP40813-001D	GUIDE ARM ASSY	121			LP30980-001B	CONNECT PLATE
50			LP40841-001A	TORSION SPRING	122			LP10403-001C	SIDE HOLDER(L)
51			LP30002-090A	SPACER	123			LP10404-001E	SIDE HOLDER(R)
52			QAH0081-001	AC HEAD	124			LP30983-001A	LOCK LEVER(L)
53			LP30965-001A	HEAD BASE	125			LP30984-001A	LOCK LEVER(R)
55			LP40842-001A	COMPRESSION SPRING	126			LP40924-001D	TENSION SPRING,X2
57			QYTSST2010Z	SCREW,X3	127			LP40856-001B	EARTH SPRING(1)
58			QYTDST2606Z	SCREW,X2	128			LP40857-001B	EARTH SPRING(2)
59			QAR0023-001	LOADING MOTOR	130			LP30981-001F	CASSETTE HOLDER ASSY
60			QYTPSP3003Z	SCREW,X2	131			LP31135-001A	C.H STOPPER
61			LP21056-002G	MOTOR BRACKET	134			LP21051-002C	REC.SAFETY LEVER
62			QYTPST2620Z	SCREW	137			LP21052-001H	TOP FRAME
63			LP40814-001B	WORM BEARING	138			LP30002-0A7A	SPACER,X2
64			LP21044-001D	CONTROL CAM	151			LP30985-001G	DOOR OPENER
65			PQM30017-24	SLIT WASHER	WR1			WJT0059-001D	E-CARD WIRE,DRUM
66			LP40815-001A	WORM GEAR	WR2			WJT0067-001B	E-CARD WIRE,A/C HEAD CN2001
67			LP40816-001B	HELICAL GEAR	WR3			WJS0022-001A	E-FL/RB WIRE,LOADING MOTOR
68			LP40817-001A	CONNECT GEAR					
69			LP10400-001H	CONTROL PLATE					
70			LP40843-001A	TORSION SPRING					
71			LP40818-001B	TENSION ARM ASSY					
72			LP40844-001D	TENSION SPRING					
73			LP21045-001D	TENSION ARM BASE					
74			LP40821-001A	TENSION BAND ASSY					
75			LP30967-001B	BAND HOLDER-1					
76			LP30968-001C	BAND HOLDER-2					
77			LP40822-002B	ADJUST PIN					
78			LP31000-005E	TENSION ARM LEVER					
79			LP21046-001C	MAIN BRAKE(TAKE UP)					
80			LP40824-001A	BAND BRAKE ASSY					

5.4 ELECTRICAL PARTS LIST

MODEL	MARK
HR-S5950EU	A
HR-S5955EK	B
HR-S5955MS	C

Δ REF No. PART No. PART NAME, DESCRIPTION

MAIN BOARD ASSEMBLY <03>

PW1 MAIN BOARD ASS'Y<03> includes the parts shown in the following.

PW1 S-SUB BOARD ASS'Y<15>

PW1	LPA10160-07E	MAIN BOARD ASSY,A
	LPA10160-08E	MAIN BOARD ASSY,B
	LPA10160-09E	MAIN BOARD ASSY,C
IC1	JCP8051-MSA	IC
IC251	LC74793	IC
IC301	LA7358	IC,C
IC2201	AN3651FBP	IC
IC3001	HD6432199RA44F	IC,A
	HD6432199RA46F	IC,B
	HD6432199RA48F	IC,C
	or HD64F2199RFA44	IC,A
	or HD64F2199RFA46	IC,B
	or HD64F2199RFA48	IC,C
IC3002	IC-PST3427U-X	IC
IC3003	LPN0722-004A-01	IC(EEPROM),A
	LPN0738-003A-01	IC(EEPROM),B
	LPN0752-002A-02	IC(EEPROM),C
IC6701	MSP3417D	IC
	or MSP3417DG3	IC
	or MSP3417G	IC
IC7002	GP1U291Q	IR DETECT UNIT
	or PNA4652M00YC	IR DETECT UNIT
IC7102	MM1508XN	IC,A,C
IC7103	MM1508XN	IC,A,C
IC7104	MM1503XN	IC,A,C
	MM1507XN	IC,B
IC7105	MM1506XN	IC
Q1	2SC4081/QRS/-X	TRANSISTOR
	or 2PC4081/R/-X	TRANSISTOR
Q2	2SC4081/QRS/-X	TRANSISTOR
	or 2PC4081/R/-X	TRANSISTOR
Q3	2SC4081/QRS/-X	TRANSISTOR
	or 2PC4081/R/-X	TRANSISTOR
Q4	2SC4081/QRS/-X	TRANSISTOR
	or 2PC4081/R/-X	TRANSISTOR
Q7	2SC4081/QRS/-X	TRANSISTOR
	or 2PC4081/R/-X	TRANSISTOR
	or 2SD1819A/QRS/-X	TRANSISTOR
Q8	2SC4081/QRS/-X	TRANSISTOR
	or 2SD1819A/QRS/-X	TRANSISTOR
	or 2PC4081/R/-X	TRANSISTOR
Q9	2SC4081/QRS/-X	TRANSISTOR
	or 2PC4081/R/-X	TRANSISTOR
	or 2SD1819A/QRS/-X	TRANSISTOR
Q10	2SA1576A/QR/-X	TRANSISTOR
	or 2SB1218A/QR/-X	TRANSISTOR
	or 2PA1576/R/-X	TRANSISTOR
Q14	2SC4081/QRS/-X	TRANSISTOR,C
	or 2SD1819A/QRS/-X	TRANSISTOR,C
	or 2PC4081/R/-X	TRANSISTOR,C
Q15	DTC144WU	DIGI TRANSISTOR,C
	or PDC144WU	DIGI TRANSISTOR,C
	or RN1309	DIGI TRANSISTOR,C
	or UN521E	DIGI TRANSISTOR,C

# Δ REF No.	PART No.	PART NAME, DESCRIPTION
Q16	DTC144WU	DIGI TRANSISTOR
	or PDC144WU	DIGI TRANSISTOR
	or RN1309	DIGI TRANSISTOR
	or UN521E	DIGI TRANSISTOR
Q21	2SA1576A/QR/-X	TRANSISTOR
	or 2PA1576/R/-X	TRANSISTOR
	or 2SB1218A/QR/-X	TRANSISTOR
Q24	2SA1576A/QR/-X	TRANSISTOR
	or 2PA1576/R/-X	TRANSISTOR
	or 2SB1218A/QR/-X	TRANSISTOR
Q34	2SA1576A/QR/-X	TRANSISTOR,C
	or 2PA1576/R/-X	TRANSISTOR,C
	or 2SB1218A/QR/-X	TRANSISTOR,C
Q38	2SC4081/QRS/-X	TRANSISTOR
	or 2SD1819A/QRS/-X	TRANSISTOR
	or 2PC4081/R/-X	TRANSISTOR
Q41	DTC144WU	DIGI TRANSISTOR,A,C
	or PDC144WU	DIGI TRANSISTOR,A,C
	or RN1309	DIGI TRANSISTOR,A,C
	or UN521E	DIGI TRANSISTOR,A,C
Q50	DTA144WU	DIGI TRANSISTOR
	or PDTA144WU	DIGI TRANSISTOR
	or RN2309	TRANSISTOR
	or UN511E	DIGI TRANSISTOR
Q201	2SB1218A/QR/-X	TRANSISTOR
	or 2SA1576A/QR/-X	TRANSISTOR
	or 2PA1576/R/-X	TRANSISTOR
Q202	2SD1819A/QRS/-X	TRANSISTOR
	or 2PC4081/R/-X	TRANSISTOR
	or 2SC4081/QRS/-X	TRANSISTOR
Q301	2SB1218A/QR/-X	TRANSISTOR,C
	or 2PA1576/R/-X	TRANSISTOR,C
	or 2SA1576A/QR/-X	TRANSISTOR,C
Q302	UN511E	DIGI TRANSISTOR,C
	or RN2309	TRANSISTOR,C
	or DTA144WU	DIGI TRANSISTOR,C
	or PDTA144WU	DIGI TRANSISTOR,C
Q2001	2SC4081/QRS/-X	TRANSISTOR
	or 2PC4081/R/-X	TRANSISTOR
	or 2SD1819A/QRS/-X	TRANSISTOR
Q2002	2SC4081/QRS/-X	TRANSISTOR
	or 2SD1819A/QRS/-X	TRANSISTOR
	or 2PC4081/R/-X	TRANSISTOR
Q2003	DTA144WU	DIGI TRANSISTOR
	or PDTA144WU	DIGI TRANSISTOR
	or RN2309	TRANSISTOR
	or UN511E	DIGI TRANSISTOR
Q2051	2SC4081/QRS/-X	TRANSISTOR
	or 2PC4081/R/-X	TRANSISTOR
	or 2SD1819A/QRS/-X	TRANSISTOR
Q2052	2SA1576A/QR/-X	TRANSISTOR
	or 2SB1218A/QR/-X	TRANSISTOR
	or 2PA1576/R/-X	TRANSISTOR
Q2053	DTC144WU	DIGI TRANSISTOR
	or PDC144WU	DIGI TRANSISTOR
	or RN1309	DIGI TRANSISTOR
	or UN521E	DIGI TRANSISTOR
Q2054	2SA1576A/QR/-X	TRANSISTOR
	or 2SB1218A/QR/-X	TRANSISTOR
	or 2PA1576/R/-X	TRANSISTOR
Q2055	DTC144WU	DIGI TRANSISTOR

#	△	REF No.	PART No.	PART NAME, DESCRIPTION	#	△	REF No.	PART No.	PART NAME, DESCRIPTION
			or PDC144WU	DIGI TRANSISTOR			Q5306	DTC114EU	DIGI TRANSISTOR
			or RN1309	DIGI TRANSISTOR				or PDC114EU	DIGI TRANSISTOR
			or UN521E	DIGI TRANSISTOR				or UN5211	DIGI TRANSISTOR
Q2201			DTA144WU	DIGI TRANSISTOR				or RN1302	DIGI TRANSISTOR
			or PDC144WU	DIGI TRANSISTOR	Q5307			2SD2144S/UV-T	TRANSISTOR
			or UN511E	DIGI TRANSISTOR	Q6030			2SB1218A/RS/-X	TRANSISTOR
			or RN2309	TRANSISTOR	Q6031			DTC114EU	DIGI TRANSISTOR
Q2202			DTC144WU	DIGI TRANSISTOR				or PDC114EU	DIGI TRANSISTOR
			or RN1309	DIGI TRANSISTOR				or UN5211	DIGI TRANSISTOR
			or UN521E	DIGI TRANSISTOR				or RN1302	DIGI TRANSISTOR
			or PDC144WU	DIGI TRANSISTOR	Q6032			DTC114EU	DIGI TRANSISTOR
Q2203			2SC4081/QRS/-X	TRANSISTOR				or PDC114EU	DIGI TRANSISTOR
			or 2SD1819A/QRS/-X	TRANSISTOR				or UN5211	DIGI TRANSISTOR
			or 2PC4081/R/-X	TRANSISTOR				or RN1302	DIGI TRANSISTOR
Q2204			2SC4081/QRS/-X	TRANSISTOR	Q7001			DTA143TU	DIGI TRANSISTOR
			or 2PC4081/R/-X	TRANSISTOR	Q7002			DTA143TU	DIGI TRANSISTOR
			or 2SD1819A/QRS/-X	TRANSISTOR	Q7003			DTA143TU	DIGI TRANSISTOR
Q2251			DTC144WU	DIGI TRANSISTOR	Q7004			DTA143TU	DIGI TRANSISTOR
			or RN1309	DIGI TRANSISTOR	Q7005			DTA143TU	DIGI TRANSISTOR
			or UN521E	DIGI TRANSISTOR	Q7006			DTC143TU	DIGI TRANSISTOR
			or PDC144WU	DIGI TRANSISTOR	Q7007			DTC143TU	DIGI TRANSISTOR
Q2252			DTC144WU	DIGI TRANSISTOR	Q7008			DTC143TU	DIGI TRANSISTOR
			or PDC144WU	DIGI TRANSISTOR	Q7009			DTC143TU	DIGI TRANSISTOR
			or RN1309	DIGI TRANSISTOR	Q7010			DTC143TU	DIGI TRANSISTOR
			or UN521E	DIGI TRANSISTOR	Q7011			DTC143TU	DIGI TRANSISTOR
Q2253			DTC144WU	DIGI TRANSISTOR	Q7012			DTC143TU	DIGI TRANSISTOR
			or RN1309	DIGI TRANSISTOR	Q7101			2SB1218A/QR/-X	TRANSISTOR
			or UN521E	DIGI TRANSISTOR				or 2SA1576A/QR/-X	TRANSISTOR
			or PDC144WU	DIGI TRANSISTOR				or 2PA1576/R/-X	TRANSISTOR
Q2254			DTC114EU	DIGI TRANSISTOR	Q7102			DTC144WU	DIGI TRANSISTOR
			or PDC114EU	DIGI TRANSISTOR				or PDC144WU	DIGI TRANSISTOR
			or RN1302	DIGI TRANSISTOR				or RN1309	DIGI TRANSISTOR
			or UN5211	DIGI TRANSISTOR				or UN521E	DIGI TRANSISTOR
Q2255			DTC114EU	DIGI TRANSISTOR,A,C	Q7103			2SC4081/QRS/-X	TRANSISTOR
			or PDC114EU	DIGI TRANSISTOR,A,C				or 2SD1819A/QRS/-X	TRANSISTOR
			or RN1302	DIGI TRANSISTOR,A,C				or 2PC4081/R/-X	TRANSISTOR
			or UN5211	DIGI TRANSISTOR,A,C	Q7104			2SB1218A/QR/-X	TRANSISTOR
Q3003			PTZ-NV16A	PHOTO TRANSISTOR				or 2PA1576/R/-X	TRANSISTOR
Q3004			2SD1819A/QRS/-X	TRANSISTOR				or 2SA1576A/QR/-X	TRANSISTOR
			or 2SC4081/QRS/-X	TRANSISTOR	Q7106			2SB1218A/QR/-X	TRANSISTOR,A,C
			or 2PC4081/R/-X	TRANSISTOR				or 2SA1576A/QR/-X	TRANSISTOR,A,C
Q3005			2SD1819A/QRS/-X	TRANSISTOR				or 2PA1576/R/-X	TRANSISTOR,A,C
			or 2SC4081/QRS/-X	TRANSISTOR	Q7107			DTC144WU	DIGI TRANSISTOR
			or 2PC4081/R/-X	TRANSISTOR				or PDC144WU	DIGI TRANSISTOR
Q4001			UN5211	DIGI TRANSISTOR				or RN1309	DIGI TRANSISTOR
			or PDC114EU	DIGI TRANSISTOR				or UN521E	DIGI TRANSISTOR
			or DTC114EU	DIGI TRANSISTOR	D201			1SS133	DIODE
			or RN1302	DIGI TRANSISTOR	D2251			1SS133	DIODE
Q5101			2SK2632-CB14	POWER MOS FET				or 1SS270A	DIODE
			or 2SK2129-LT	POWER MOS FET	D3001			LNB2301L01VI	LE DIODE
			or 2SK2129	POWER MOS FET	D3002			1SS133	DIODE
			or 2SK2632	POWER MOS FET				or 1SS270A	DIODE
Q5102			2SD2144S/UV-T	TRANSISTOR	D3003			RD39ES/B3/-T2	ZENER DIODE
Q5301			2SC1740S/RS-T	TRANSISTOR				or MTZJ39C	ZENER DIODE
			or 2SC3199/YG-T	TRANSISTOR	D3004			11ES2	DIODE
Q5303			2SC5739/QP/	TRANSISTOR				or 1A3G	DIODE
△ Q5304			2SD2144S/UV-T	TRANSISTOR	△ D3005			11ES2	DIODE
Q5305			DTA114EU	DIGI TRANSISTOR	△			or 1A3G	DIODE
			or PDC114EU	DIGI TRANSISTOR	D5001			S1WB/A/60-4102	BRIDGE DIODE
			or RN2302	TRANSISTOR				or S1WB/A/60-X	BRIDGE DIODE
			or UN5111	DIGI TRANSISTOR				or S1WB(A)60F4072X	BRIDGE DIODE

#	△ REF No.	PART No.	PART NAME, DESCRIPTION		#	△ REF No.	PART No.	PART NAME, DESCRIPTION	
D5101		AU01	DIODE		R41		NRSA02J-392X	MG RESISTOR	3.9kΩ, 1/10W
		or ERA18-04-T2	FR DIODE		R42		NRSA02J-681X	MG RESISTOR	680Ω, 1/10W
		or 1SR153-400-T2	FR DIODE		R46		NRSA02J-331X	MG RESISTOR	330Ω, 1/10W
		or 10ELS4	FR DIODE		R47		NRSA02J-821X	MG RESISTOR,C	820Ω, 1/10W
D5102		AU01	DIODE		R48		NRSA02J-102X	MG RESISTOR	1kΩ, 1/10W
		or ERA18-04-T2	FR DIODE		R51		NRSA02J-471X	MG RESISTOR	470Ω, 1/10W
		or 1SR153-400-T2	FR DIODE		R65		NRSA02J-102X	MG RESISTOR,C	1kΩ, 1/10W
		or 10ELS4	FR DIODE		R68		NRSA02J-222X	MG RESISTOR,C	2.2kΩ, 1/10W
D5103		1SS133	DIODE		R77		NRSA02J-103X	MG RESISTOR	10kΩ, 1/10W
		or 1SS270A	DIODE		R80		NRSA02J-102X	MG RESISTOR,C	1kΩ, 1/10W
D5105		1SS133	DIODE		R82		NRSA02J-102X	MG RESISTOR	1kΩ, 1/10W
		or 1SS270A	DIODE		R88		NRSA02J-0R0X	MG RESISTOR	0Ω, 1/10W
D5203		AU01Z	FR DIODE		R90		NRSA02J-391X	MG RESISTOR	390Ω, 1/10W
		or 10ELS2	FR DIODE		R92		NRSA02J-152X	MG RESISTOR	1.5kΩ, 1/10W
D5204		AU01Z	FR DIODE		R93		NRSA02J-222X	MG RESISTOR	2.2kΩ, 1/10W
		or 10ELS2	FR DIODE		R104		NRSA02J-682X	MG RESISTOR	6.8kΩ, 1/10W
D5207		AK04	SB DIODE		R118		NRSA02J-0R0X	MG RESISTOR	0Ω, 1/10W
		or SBO40	SB DIODE		R201		NRSA02J-471X	MG RESISTOR	470Ω, 1/10W
		or 11EQS04	SB DIODE		R202		NRSA02J-103X	MG RESISTOR	10kΩ, 1/10W
		or 1S4	SB DIODE		R203		NRSA02J-103X	MG RESISTOR	10kΩ, 1/10W
D5209		AK04	SB DIODE		R204		NRSA02J-474X	MG RESISTOR	470kΩ, 1/10W
		or SBO40	SB DIODE		R205		NRSA02J-222X	MG RESISTOR	2.2kΩ, 1/10W
		or 1S4	SB DIODE		R206		NRSA02J-474X	MG RESISTOR	470kΩ, 1/10W
		or 11EQS04	SB DIODE		R207		NRSA02J-102X	MG RESISTOR	1kΩ, 1/10W
D5210		AU01Z	FR DIODE		R208		NRSA02J-0R0X	MG RESISTOR	0Ω, 1/10W
		or PG104RS	FR DIODE		R209		NRSA02J-0R0X	MG RESISTOR	0Ω, 1/10W
		or 10ELS2	FR DIODE		R210		NRSA02J-0R0X	MG RESISTOR	0Ω, 1/10W
		or ERA18-02-T2	FR DIODE		R211		NRSA02J-471X	MG RESISTOR	470Ω, 1/10W
		or 1SR153-400-T2	FR DIODE		R212		NRSA02J-101X	MG RESISTOR	100Ω, 1/10W
D5301		MTZJ15C	ZENER DIODE		R251		NRSA02J-103X	MG RESISTOR	10kΩ, 1/10W
		or RD15ES/B3/-T2	ZENER DIODE		R252		NRSA02J-0R0X	MG RESISTOR	0Ω, 1/10W
D5302		MTZJ11C	ZENER DIODE		R254		NRSA02J-103X	MG RESISTOR	10kΩ, 1/10W
		or RD11ES/B3/-T2	ZENER DIODE		R255		NRSA02J-272X	MG RESISTOR	2.7kΩ, 1/10W
D5303		MTZJ5.6A	ZENER DIODE		R256		NRSA02J-562X	MG RESISTOR	5.6kΩ, 1/10W
		or RD5.6ES/B1/-T2	ZENER DIODE		R258		NRSA02J-0R0X	MG RESISTOR	0Ω, 1/10W
D5305		MTZJ5.6C	ZENER DIODE		R259		NRSA02J-103X	MG RESISTOR	10kΩ, 1/10W
		or RD5.6ES/B3/-T2	ZENER DIODE		R301		NRSA02J-273X	MG RESISTOR,C	27kΩ, 1/10W
D6002		HZ30-2L-T2	ZENER DIODE		R302		NRSA02J-124X	MG RESISTOR,C	120kΩ, 1/10W
		or HZ30-2LTD	Z DIODE (M)		R303		NRSA02J-273X	MG RESISTOR,C	27kΩ, 1/10W
D6701		1SS133	DIODE		R304		NRSA02J-682X	MG RESISTOR,C	6.8kΩ, 1/10W
R1		NRSA02J-622X	MG RESISTOR	6.2kΩ, 1/10W	R305		NRSA02J-473X	MG RESISTOR,C	47kΩ, 1/10W
R2		QRE141J-152Y	RESISTOR	1.5kΩ, 1/4W	R306		NRSA02J-273X	MG RESISTOR,C	27kΩ, 1/10W
R3		NRSA02J-152X	MG RESISTOR	1.5kΩ, 1/10W	R307		NRSA02J-222X	MG RESISTOR,C	2.2kΩ, 1/10W
R5		NRSA02J-0R0X	MG RESISTOR	0Ω, 1/10W	R308		NRSA02J-222X	MG RESISTOR,C	2.2kΩ, 1/10W
R6		NRSA02J-103X	MG RESISTOR	10kΩ, 1/10W	R309		NRSA02J-0R0X	MG RESISTOR,C	0Ω, 1/10W
R7		NRSA02J-681X	MG RESISTOR	680Ω, 1/10W	R310		NRSA02J-223X	MG RESISTOR,C	22kΩ, 1/10W
R21		NRSA02J-102X	MG RESISTOR	1kΩ, 1/10W	R311		NRSA02J-472X	MG RESISTOR,C	4.7kΩ, 1/10W
R22		NRSA02J-102X	MG RESISTOR	1kΩ, 1/10W	R312		NRSA02J-272X	MG RESISTOR,C	2.7kΩ, 1/10W
R23		NRSA02J-222X	MG RESISTOR,C	2.2kΩ, 1/10W	R313		NRSA02J-223X	MG RESISTOR,C	22kΩ, 1/10W
R24		NRSA02J-0R0X	MG RESISTOR	0Ω, 1/10W	R314		NRVA02D-243X	CMF RESISTOR,C	24kΩ, 1/10W
R25		NRSA02J-103X	MG RESISTOR	10kΩ, 1/10W	R315		NRSA02J-564X	MG RESISTOR,C	560kΩ, 1/10W
R26		NRSA02J-682X	MG RESISTOR	6.8kΩ, 1/10W	R316		NRSA02J-124X	MG RESISTOR,C	120kΩ, 1/10W
R27		NRSA02J-221X	MG RESISTOR	220Ω, 1/10W	R329		NRSA02J-0R0X	MG RESISTOR,C	0Ω, 1/10W
R28		NRSA02J-221X	MG RESISTOR	220Ω, 1/10W	R2003		NRSA02J-101X	MG RESISTOR	100Ω, 1/10W
R29		NRSA02J-561X	MG RESISTOR	560Ω, 1/10W	R2005		NRSA02J-153X	MG RESISTOR	15kΩ, 1/10W
R31		NRSA02J-152X	MG RESISTOR	1.5kΩ, 1/10W	R2007		NRSA02J-183X	MG RESISTOR	18kΩ, 1/10W
R32		NRSA02J-471X	MG RESISTOR	470Ω, 1/10W	R2008		NRSA02J-103X	MG RESISTOR	10kΩ, 1/10W
R35		NRSA02J-153X	MG RESISTOR	15kΩ, 1/10W	R2010		NRSA02J-123X	MG RESISTOR	12kΩ, 1/10W
R36		NRSA02J-182X	MG RESISTOR	1.8kΩ, 1/10W	R2013		NRSA02J-682X	MG RESISTOR	6.8kΩ, 1/10W
R38		NRSA02J-102X	MG RESISTOR	1kΩ, 1/10W	R2014		NRSA02J-224X	MG RESISTOR	220kΩ, 1/10W
R40		NRSA02J-222X	MG RESISTOR	2.2kΩ, 1/10W	R2015		NRSA02J-181X	MG RESISTOR	180Ω, 1/10W

#	△	REF No.	PART No.	PART NAME, DESCRIPTION	#	△	REF No.	PART No.	PART NAME, DESCRIPTION
R2016			NRSA02J-393X	MG RESISTOR 39kΩ, 1/10W	R3031			NRSA02J-0R0X	MG RESISTOR 0Ω, 1/10W
R2017			NRSA02J-183X	MG RESISTOR 18kΩ, 1/10W	R3032			NRSA02J-0R0X	MG RESISTOR 0Ω, 1/10W
R2018			NRSA02J-472X	MG RESISTOR 4.7kΩ, 1/10W	R3033			NRSA02J-472X	MG RESISTOR 4.7kΩ, 1/10W
R2019			NRSA02J-472X	MG RESISTOR 4.7kΩ, 1/10W	R3034			NRSA02J-472X	MG RESISTOR 4.7kΩ, 1/10W
R2053			NRSA02J-392X	MG RESISTOR 3.9kΩ, 1/10W	R3035			NRSA02J-0R0X	MG RESISTOR 0Ω, 1/10W
R2054			NRSA02J-123X	MG RESISTOR 12kΩ, 1/10W	R3037			QUY160-100Y	IM BUS WIRE
R2055			NRSA02J-3R3X	MG RESISTOR 3.3Ω, 1/10W	R3038			QRE141J-472Y	RESISTOR 4.7kΩ, 1/4W
R2056			NRSA02J-820X	MG RESISTOR 82Ω, 1/10W	R3039			QUY160-100Y	IM BUS WIRE
R2057			NRSA02J-473X	MG RESISTOR 47kΩ, 1/10W	R3040			NRSA02J-0R0X	MG RESISTOR 0Ω, 1/10W
R2058			NRSA02J-183X	MG RESISTOR 18kΩ, 1/10W	R3041			NRSA02J-0R0X	MG RESISTOR 0Ω, 1/10W
R2059			NRSA02J-473X	MG RESISTOR 47kΩ, 1/10W	R3042			NRSA02J-0R0X	MG RESISTOR 0Ω, 1/10W
R2060			NRSA02J-183X	MG RESISTOR 18kΩ, 1/10W	R3043			NRSA02J-0R0X	MG RESISTOR, C 0Ω, 1/10W
R2201			NRSA02J-473X	MG RESISTOR 47kΩ, 1/10W	R3045			NRSA02J-0R0X	MG RESISTOR 0Ω, 1/10W
R2202			NRSA02J-682X	MG RESISTOR 6.8kΩ, 1/10W	R3046			QUY160-100Y	IM BUS WIRE
R2203			NRSA02J-473X	MG RESISTOR 47kΩ, 1/10W	R3047			QUY160-100Y	IM BUS WIRE
R2204			NRSA02J-682X	MG RESISTOR 6.8kΩ, 1/10W	R3048			QUY160-100Y	IM BUS WIRE
R2205			NRSA02J-473X	MG RESISTOR 47kΩ, 1/10W	R3049			QUY160-100Y	IM BUS WIRE
R2206			NRSA02J-682X	MG RESISTOR 6.8kΩ, 1/10W	R3050			QUY160-100Y	IM BUS WIRE
R2207			NRSA02J-473X	MG RESISTOR 47kΩ, 1/10W	R3051			QUY160-100Y	IM BUS WIRE
R2208			NRSA02J-682X	MG RESISTOR 6.8kΩ, 1/10W	R3052			QUY160-100Y	IM BUS WIRE
R2209			NRSA02J-681X	MG RESISTOR 680Ω, 1/10W	R3053			NRSA02J-0R0X	MG RESISTOR 0Ω, 1/10W
R2210			NRSA02J-472X	MG RESISTOR 4.7kΩ, 1/10W	R3054			QRE141J-102Y	RESISTOR 1kΩ, 1/4W
R2211			NRSA02J-272X	MG RESISTOR 2.7kΩ, 1/10W	R3055			NRSA02J-0R0X	MG RESISTOR 0Ω, 1/10W
R2212			NRSA02J-272X	MG RESISTOR 2.7kΩ, 1/10W	R3058			QUY160-100Y	IM BUS WIRE
R2213			NRSA02J-472X	MG RESISTOR 4.7kΩ, 1/10W	R3059			NRSA02J-331X	MG RESISTOR 330Ω, 1/10W
R2214			NRSA02J-681X	MG RESISTOR 680Ω, 1/10W	R3060			NRSA02J-331X	MG RESISTOR 330Ω, 1/10W
R2215			NRSA02J-181X	MG RESISTOR 180Ω, 1/10W	R3061			NRSA02J-0R0X	MG RESISTOR 0Ω, 1/10W
R2216			NRSA02J-122X	MG RESISTOR, A,B 1.2kΩ, 1/10W	R3062			NRSA02J-0R0X	MG RESISTOR 0Ω, 1/10W
R2217			NRSA02J-472X	MG RESISTOR, A,B 4.7kΩ, 1/10W	R3063			QRE141J-271Y	RESISTOR 270Ω, 1/4W
R2218			NRSA02J-332X	MG RESISTOR 3.3kΩ, 1/10W	R3064			QRE141J-271Y	RESISTOR 270Ω, 1/4W
R2219			NRSA02J-122X	MG RESISTOR 1.2kΩ, 1/10W	R3065			QRE141J-271Y	RESISTOR 270Ω, 1/4W
R2220			NRSA02J-102X	MG RESISTOR 1kΩ, 1/10W	R3066			QRE141J-271Y	RESISTOR 270Ω, 1/4W
R2222			NRSA02J-472X	MG RESISTOR 4.7kΩ, 1/10W	R3067			QRE141J-472Y	RESISTOR 4.7kΩ, 1/4W
R2223			NRSA02J-511X	MG RESISTOR 510Ω, 1/10W	R3068			NRSA02J-0R0X	MG RESISTOR 0Ω, 1/10W
R2224			NRSA02J-511X	MG RESISTOR 510Ω, 1/10W	R3069			QUY160-100Y	IM BUS WIRE
R2225			NRSA02J-472X	MG RESISTOR 4.7kΩ, 1/10W	R3070			NRSA02J-0R0X	MG RESISTOR 0Ω, 1/10W
R2226			NRSA02J-273X	MG RESISTOR 27kΩ, 1/10W	R3071			QUY160-100Y	IM BUS WIRE
R2227			NRSA02J-393X	MG RESISTOR 39kΩ, 1/10W	R3072			NRSA02J-0R0X	MG RESISTOR 0Ω, 1/10W
R2228			NRSA02J-273X	MG RESISTOR 27kΩ, 1/10W	R3073			QUY153-050Y	IM BUS WIRE
R2229			NRSA02J-393X	MG RESISTOR 39kΩ, 1/10W	R3074			NRSA02J-103X	MG RESISTOR 10kΩ, 1/10W
R2230			NRSA02J-473X	MG RESISTOR 47kΩ, 1/10W	R3077			NRSA02J-102X	MG RESISTOR 1kΩ, 1/10W
R2231			NRSA02J-682X	MG RESISTOR 6.8kΩ, 1/10W	R3080			NRSA02J-101X	MG RESISTOR 100Ω, 1/10W
R2232			NRSA02J-473X	MG RESISTOR 47kΩ, 1/10W	R3082			NRSA02J-102X	MG RESISTOR 1kΩ, 1/10W
R2233			NRSA02J-682X	MG RESISTOR 6.8kΩ, 1/10W	R3083			QRE141J-102Y	RESISTOR, A,C 1kΩ, 1/4W
R2234			NRSA02J-101X	MG RESISTOR 100Ω, 1/10W				QUY160-100Y	IM BUS WIRE, B
R2235			NRSA02J-681X	MG RESISTOR, A,C 680Ω, 1/10W	R3084			QUY153-050Y	IM BUS WIRE
R2236			NRSA02J-272X	MG RESISTOR, A,C 2.7kΩ, 1/10W	R3085			NRSA02J-472X	MG RESISTOR 4.7kΩ, 1/10W
R2237			NRSA02J-681X	MG RESISTOR, A,C 680Ω, 1/10W	R3086			QUY160-100Y	IM BUS WIRE
R2238			NRSA02J-272X	MG RESISTOR, A,C 2.7kΩ, 1/10W	R3087			NRSA02J-0R0X	MG RESISTOR, B 0Ω, 1/10W
R2251			NRSA02J-472X	MG RESISTOR 4.7kΩ, 1/10W				NRSA02J-102X	MG RESISTOR, A,C 1kΩ, 1/10W
R2252			NRSA02J-221X	MG RESISTOR 220Ω, 1/10W	R3088			NRSA02J-0R0X	MG RESISTOR 0Ω, 1/10W
R2253			NRSA02J-101X	MG RESISTOR 100Ω, 1/10W	R3089			NRSA02J-0R0X	MG RESISTOR, C 0Ω, 1/10W
R2254			QRE141J-103Y	RESISTOR 10kΩ, 1/4W	R3090			NRSA02J-0R0X	MG RESISTOR 0Ω, 1/10W
R2255			NRSA02J-273X	MG RESISTOR 27kΩ, 1/10W	R3091			QUY153-050Y	IM BUS WIRE
R2256			NRSA02J-222X	MG RESISTOR 2.2kΩ, 1/10W	R3092			NRSA02J-0R0X	MG RESISTOR 0Ω, 1/10W
R3024			NRSA02J-0R0X	MG RESISTOR 0Ω, 1/10W	R3093			NRSA02J-0R0X	MG RESISTOR 0Ω, 1/10W
R3025			NRSA02J-0R0X	MG RESISTOR 0Ω, 1/10W	R3094			QUY160-100Y	IM BUS WIRE
R3026			NRSA02J-0R0X	MG RESISTOR 0Ω, 1/10W	R3095			QUY160-100Y	IM BUS WIRE
R3027			NRSA02J-682X	MG RESISTOR 6.8kΩ, 1/10W	R3096			NRSA02J-102X	MG RESISTOR 1kΩ, 1/10W
R3028			NRSA02J-0R0X	MG RESISTOR 0Ω, 1/10W	R3097			NRSA02J-102X	MG RESISTOR 1kΩ, 1/10W
R3030			NRSA02J-0R0X	MG RESISTOR 0Ω, 1/10W	R3098			NRSA02J-0R0X	MG RESISTOR 0Ω, 1/10W

#	△ REF No.	PART No.	PART NAME, DESCRIPTION	#	△ REF No.	PART No.	PART NAME, DESCRIPTION
R3099		NRSA02J-102X	MG RESISTOR 1kΩ,1/10W	R5332		QRL02DJ-391X	OMF RESISTOR 390Ω,2W
R3100		NRSA02J-0R0X	MG RESISTOR 0Ω,1/10W	R6020		NRSA02J-102X	MG RESISTOR 1kΩ,1/10W
R3101		NRSA02J-0R0X	MG RESISTOR 0Ω,1/10W	R6021		NRSA02J-102X	MG RESISTOR 1kΩ,1/10W
R3102		NRSA02J-0R0X	MG RESISTOR 0Ω,1/10W	R6030		NRSA02J-102X	MG RESISTOR 1kΩ,1/10W
R3205		QRE141J-181Y	RESISTOR 180Ω,1/4W	R6031		NRSA02J-271X	MG RESISTOR 270Ω,1/10W
R3207		NRSA02J-183X	MG RESISTOR 18kΩ,1/10W	R6032		NRSA02J-472X	MG RESISTOR,A,B 4.7kΩ,1/10W
R3208		NRSA02J-121X	MG RESISTOR 120Ω,1/10W			NRSA02J-183X	MG RESISTOR,C 18kΩ,1/10W
R3209		NRSA02J-183X	MG RESISTOR 18kΩ,1/10W	R6033		NRSA02J-183X	MG RESISTOR,C 18kΩ,1/10W
R3210		NRSA02J-121X	MG RESISTOR 120Ω,1/10W			NRSA02J-182X	MG RESISTOR,A,B 1.8kΩ,1/10W
R3211		NRSA02J-183X	MG RESISTOR 18kΩ,1/10W	R6050		NRSA02J-101X	MG RESISTOR,A,B 100Ω,1/10W
R3212		NRSA02J-474X	MG RESISTOR 470kΩ,1/10W	R6051		QRE141J-101Y	RESISTOR,A,B 100Ω,1/4W
R3213		NRSA02J-334X	MG RESISTOR 330kΩ,1/10W	R6052		NRSA02J-101X	MG RESISTOR,A,B 100Ω,1/10W
R3214		NRSA02J-103X	MG RESISTOR 10kΩ,1/10W	R6056		NRSA02J-101X	MG RESISTOR,A,B 100Ω,1/10W
R3215		NRSA02J-103X	MG RESISTOR 10kΩ,1/10W	R6080		NRSA02J-102X	MG RESISTOR 1kΩ,1/10W
R3216		NRSA02J-103X	MG RESISTOR 10kΩ,1/10W	R6707		NRSA02J-330X	MG RESISTOR 33Ω,1/10W
R3217		NRSA02J-103X	MG RESISTOR 10kΩ,1/10W	R6708		NRSA02J-103X	MG RESISTOR 10kΩ,1/10W
R3218		QRE141J-472Y	RESISTOR 4.7kΩ,1/4W	R6709		NRSA02J-102X	MG RESISTOR 1kΩ,1/10W
R3219		NRSA02J-472X	MG RESISTOR 4.7kΩ,1/10W	R6710		NRSA02J-0R0X	MG RESISTOR 0Ω,1/10W
R3220		NRSA02J-104X	MG RESISTOR 100kΩ,1/10W	R6711		NRSA02J-474X	MG RESISTOR 470kΩ,1/10W
R3221		NRSA02J-103X	MG RESISTOR 10kΩ,1/10W	R6712		NRSA02J-102X	MG RESISTOR 1kΩ,1/10W
R3222		NRSA02J-103X	MG RESISTOR 10kΩ,1/10W	R6713		NRSA02J-123X	MG RESISTOR 12kΩ,1/10W
R3223		NRSA02J-332X	MG RESISTOR 3.3kΩ,1/10W	R6714		NRSA02J-102X	MG RESISTOR 1kΩ,1/10W
R3224		NRSA02J-332X	MG RESISTOR 3.3kΩ,1/10W	R6715		NRSA02J-123X	MG RESISTOR 12kΩ,1/10W
R3225		NRSA02J-103X	MG RESISTOR 10kΩ,1/10W	R6716		NRSA02J-470X	MG RESISTOR 47Ω,1/10W
R3229		NRSA02J-105X	MG RESISTOR 1MΩ,1/10W	R6719		NRSA02J-103X	MG RESISTOR 10kΩ,1/10W
R3232		NRSA02J-472X	MG RESISTOR 4.7kΩ,1/10W	R6720		QRE141J-562Y	RESISTOR 5.6kΩ,1/4W
R3235		NRSA02J-332X	MG RESISTOR 3.3kΩ,1/10W	R6721		NRSA02J-562X	MG RESISTOR 5.6kΩ,1/10W
R3236		NRSA02J-332X	MG RESISTOR 3.3kΩ,1/10W	R7001		NRSA02J-331X	MG RESISTOR 330Ω,1/10W
R3244		NRSA02J-333X	MG RESISTOR 33kΩ,1/10W	R7002		NRSA02J-331X	MG RESISTOR 330Ω,1/10W
R3246		NRSA02J-103X	MG RESISTOR 10kΩ,1/10W	R7003		NRSA02J-331X	MG RESISTOR 330Ω,1/10W
R3248		NRSA02J-472X	MG RESISTOR 4.7kΩ,1/10W	R7004		NRSA02J-331X	MG RESISTOR 330Ω,1/10W
R3252		NRSA02J-153X	MG RESISTOR 15kΩ,1/10W	R7005		NRSA02J-331X	MG RESISTOR 330Ω,1/10W
R3253		QRE141J-103Y	RESISTOR 10kΩ,1/4W	R7006		NRSA02J-331X	MG RESISTOR 330Ω,1/10W
R4003		NRSA02J-561X	MG RESISTOR 560Ω,1/10W	R7007		NRSA02J-331X	MG RESISTOR 330Ω,1/10W
R4004		NRSA02J-561X	MG RESISTOR 560Ω,1/10W	R7015		QRE141J-102Y	RESISTOR 1kΩ,1/4W
R4005		NRSA02J-562X	MG RESISTOR 5.6kΩ,1/10W	R7020		NRSA02J-103X	MG RESISTOR 10kΩ,1/10W
R4007		NRSA02J-102X	MG RESISTOR 1kΩ,1/10W	R7021		NRSA02J-122X	MG RESISTOR 1.2kΩ,1/10W
R4009		NRSA02J-102X	MG RESISTOR 1kΩ,1/10W	R7022		NRSA02J-182X	MG RESISTOR 1.8kΩ,1/10W
R4011		NRSA02J-472X	MG RESISTOR 4.7kΩ,1/10W	R7023		NRSA02J-222X	MG RESISTOR 2.2kΩ,1/10W
R4012		NRSA02J-222X	MG RESISTOR 2.2kΩ,1/10W	R7024		NRSA02J-272X	MG RESISTOR 2.7kΩ,1/10W
R4015		NRSA02J-562X	MG RESISTOR 5.6kΩ,1/10W	R7025		NRSA02J-472X	MG RESISTOR 4.7kΩ,1/10W
R4017		NRSA02J-102X	MG RESISTOR 1kΩ,1/10W	R7030		NRSA02J-103X	MG RESISTOR 10kΩ,1/10W
R5101		QRE141J-224Y	RESISTOR 220kΩ,1/4W	R7031		NRSA02J-122X	MG RESISTOR 1.2kΩ,1/10W
R5102		QRE141J-224Y	RESISTOR 220kΩ,1/4W	R7032		NRSA02J-182X	MG RESISTOR 1.8kΩ,1/10W
R5103		QRE141J-683Y	RESISTOR 68kΩ,1/4W	R7033		NRSA02J-222X	MG RESISTOR 2.2kΩ,1/10W
R5104		QRG02GJ-683	OMF RESISTOR 68kΩ,2W	R7101		NRSA02J-473X	MG RESISTOR 47kΩ,1/10W
R5106		QRT01DJ-R39X	MF RESISTOR 0.39Ω,1W	R7102		NRSA02J-102X	MG RESISTOR 1kΩ,1/10W
R5107		QRE121J-331Y	RESISTOR 330Ω,1/2W	R7103		NRSA02J-750X	MG RESISTOR 75Ω,1/10W
R5108		NRSA02J-152X	MG RESISTOR 1.5kΩ,1/10W	R7105		NRSA02J-331X	MG RESISTOR 330Ω,1/10W
R5109		QRE141J-561Y	RESISTOR 560Ω,1/4W	R7107		NRSA02J-331X	MG RESISTOR 330Ω,1/10W
R5110		NRSA02J-224X	MG RESISTOR 220kΩ,1/10W	R7108		NRSA02J-750X	MG RESISTOR,A,C 75Ω,1/10W
R5111		NRSA02J-391X	MG RESISTOR 390Ω,1/10W	R7110		NRSA02J-221X	MG RESISTOR,A,C 220Ω,1/10W
R5112		NRSA02J-221X	MG RESISTOR 220Ω,1/10W	R7111		NRSA02J-221X	MG RESISTOR,A,C 220Ω,1/10W
R5302		NRSA02J-102X	MG RESISTOR 1kΩ,1/10W	R7112		QRE141J-331Y	RESISTOR 330Ω,1/4W
R5303		NRSA02J-122X	MG RESISTOR 1.2kΩ,1/10W	R7113		NRSA02J-750X	MG RESISTOR 75Ω,1/10W
R5304		NRSA02J-471X	MG RESISTOR 470Ω,1/10W	R7114		NRSA02J-221X	MG RESISTOR 220Ω,1/10W
R5306		NRSA02J-181X	MG RESISTOR 180Ω,1/10W	R7116		NRSA02J-221X	MG RESISTOR 220Ω,1/10W
R5310		NRSA02J-103X	MG RESISTOR 10kΩ,1/10W	R7117		QRE141J-750Y	RESISTOR 75Ω,1/4W
R5312		NRSA02J-102X	MG RESISTOR 1kΩ,1/10W	R7119		NRSA02J-221X	MG RESISTOR 220Ω,1/10W
R5313		NRSA02J-102X	MG RESISTOR 1kΩ,1/10W	R7120		NRSA02J-221X	MG RESISTOR 220Ω,1/10W
R5319		NRSA02J-221X	MG RESISTOR 220Ω,1/10W	R7122		NQL402M-4R7X	COIL 4.7μH

#	△	REF No.	PART No.	PART NAME, DESCRIPTION		#	△	REF No.	PART No.	PART NAME, DESCRIPTION	
R7124			NQL402M-4R7X	COIL	4.7μH	C27			NCB21EK-223X	CAPACITOR	0.022μF,25V
R7131			NRSA02J-101X	MG RESISTOR,A,C	100Ω,1/10W	C28			QEKJ1HM-335	E CAPACITOR	3.3μF,50V
R7133			QRE141J-471Y	RESISTOR,A,C	470Ω,1/4W	C29			NCB21EK-333X	CAPACITOR	0.033μF,25V
R7134			NRSA02J-471X	MG RESISTOR,A,C	470Ω,1/10W	C30			QEKJ1HM-474	E CAPACITOR	0.47μF,50V
R7138			NRSA02J-750X	MG RESISTOR	75Ω,1/10W	C31			QEKJ0JM-476	E CAPACITOR	47μF,6.3V
R7139			NRSA02J-102X	MG RESISTOR	1kΩ,1/10W	C32			NCB21EK-104X	CAPACITOR	0.1μF,25V
R7140			NRSA02J-102X	MG RESISTOR	1kΩ,1/10W	C33			QEKJ1HM-225	E CAPACITOR	2.2μF,50V
R7141			NRSA02J-820X	MG RESISTOR	82Ω,1/10W	C34			NCB21CK-224X	CAPACITOR	0.22μF,16V
R7142			NRSA02J-0R0X	MG RESISTOR,A,C	0Ω,1/10W	C35			NCB21HK-103X	CAPACITOR	0.01μF,50V
R7143			NRSA02J-0R0X	MG RESISTOR,A,C	0Ω,1/10W	C36			QERF1EM-475	E CAPACITOR	4.7μF,25V
R7144			NRSA02J-472X	MG RESISTOR	4.7kΩ,1/10W	C37			QEKJ1HM-105	E CAPACITOR	1μF,50V
R7145			NRSA02J-682X	MG RESISTOR	6.8kΩ,1/10W	C38			QEKJ0JM-476	E CAPACITOR	47μF,6.3V
R7146			NRSA02J-393X	MG RESISTOR	39kΩ,1/10W	C39			NCB21HK-103X	CAPACITOR	0.01μF,50V
R7147			NRSA02J-223X	MG RESISTOR	22kΩ,1/10W	C40			QEKJ1EM-106	E CAPACITOR	10μF,25V
R7148			NRSA02J-331X	MG RESISTOR	330Ω,1/10W	C53			NDC21HJ-101X	CAPACITOR	100pF,50V
R7160			NRSA02J-331X	MG RESISTOR	330Ω,1/10W	C59			NCB21HK-103X	CAPACITOR	0.01μF,50V
R7161			NRSA02J-101X	MG RESISTOR	100Ω,1/10W	C60			QEKJ0JM-476	E CAPACITOR	47μF,6.3V
R7162			NRSA02J-331X	MG RESISTOR	330Ω,1/10W	C61			NCB21HK-103X	CAPACITOR	0.01μF,50V
R7163			NRSA02J-750X	MG RESISTOR	75Ω,1/10W	C63			NCB21EK-104X	CAPACITOR	0.1μF,25V
R7184			NRSA02J-105X	MG RESISTOR,A,C	1MΩ,1/10W	C64			NDC21HJ-220X	CAPACITOR	22pF,50V
R7185			NRSA02J-105X	MG RESISTOR,B	1MΩ,1/10W	C65			QEKJ1HM-105	E CAPACITOR	1μF,50V
R7186			NRSA02J-105X	MG RESISTOR,B	1MΩ,1/10W	C69			NCB21HK-103X	CAPACITOR	0.01μF,50V
VR2251			QVP0039-223Z	TRIM RESISTOR,REC FM ADJ		C70			NCB21HK-103X	CAPACITOR	0.01μF,50V
B5			NRSA02J-0R0X	MG RESISTOR	0Ω,1/10W	C72			NDC21HJ-470X	CAPACITOR	47pF,50V
B28			NRSA02J-0R0X	MG RESISTOR	0Ω,1/10W	C73			NDC21HJ-120X	CAPACITOR	12pF,50V
B61			NRSA02J-0R0X	MG RESISTOR	0Ω,1/10W	C78			NCB21HK-103X	CAPACITOR,C	0.01μF,50V
B62			NRSA02J-0R0X	MG RESISTOR,A,B	0Ω,1/10W	C79			NDC21HJ-390X	CAPACITOR,C	39pF,50V
B203			QRE141J-0R0Y	RESISTOR	0Ω,1/4W	C80			NCB21HK-103X	CAPACITOR	0.01μF,50V
B301			NRSA02J-0R0X	MG RESISTOR,C	0Ω,1/10W	C84			NDC21HJ-470X	CAPACITOR	47pF,50V
B2051			QUY153-050Y	IM BUS WIRE		C94			NRSA02J-0R0X	MG RESISTOR	0Ω,1/10W
B3002			NRSA02J-0R0X	MG RESISTOR	0Ω,1/10W	C103			NCB21HK-103X	CAPACITOR	0.01μF,50V
B3003			NRSA02J-0R0X	MG RESISTOR	0Ω,1/10W	C106			NCB21HK-821X	CAPACITOR	820pF,50V
B5001			QUY160-100Y	IM BUS WIRE		C108			NDC21HJ-680X	CAPACITOR	68pF,50V
B5002			QUY160-100Y	IM BUS WIRE		C109			NCB21CK-224X	CAPACITOR	0.22μF,16V
B6701			NRSA02J-0R0X	MG RESISTOR	0Ω,1/10W	C110			NDC21HJ-820X	CAPACITOR	82pF,50V
B7116			NRSA02J-0R0X	MG RESISTOR,B	0Ω,1/10W	C114			NDC21HJ-181X	CAPACITOR,A,C	180pF,50V
B7118			QUY153-050Y	IM BUS WIRE,B		C201			NDC21HJ-220X	CAPACITOR	22pF,50V
C1			NCB21HK-103X	CAPACITOR	0.01μF,50V	C202			QERF1EM-475	E CAPACITOR	4.7μF,25V
C2			NCB21HK-103X	CAPACITOR	0.01μF,50V	C203			NCB21HK-102X	CAPACITOR	0.001μF,50V
C3			NCB21HK-103X	CAPACITOR	0.01μF,50V	C204			NCB21HK-681X	CAPACITOR	680pF,50V
C4			NCB21HK-103X	CAPACITOR	0.01μF,50V	C205			QEQF1EM-475	NP E CAPACITOR	4.7μF,25V
C5			QEKJ0JM-476	E CAPACITOR	47μF,6.3V	C207			QEPF1EM-475	NP E CAPACITOR	4.7μF,25V
C6			QDYB1CM-103Y	CAPACITOR	0.01μF,16V	C209			QEKJ0JM-476	E CAPACITOR	47μF,6.3V
C7			NCB21HK-102X	CAPACITOR	0.001μF,50V	C210			NCB21HK-103X	CAPACITOR	0.01μF,50V
C8			NCB21EK-104X	CAPACITOR	0.1μF,25V	C212			NCB21HK-103X	CAPACITOR	0.01μF,50V
C9			QEKJ1HM-105	E CAPACITOR	1μF,50V	C213			NDC21HJ-100X	CAPACITOR	10pF,50V
C10			NDC21HJ-151X	CAPACITOR	150pF,50V	C251			NCB21HK-103X	CAPACITOR	0.01μF,50V
C11			NCB21EK-104X	CAPACITOR	0.1μF,25V	C252			QEKJ1EM-475	E CAPACITOR	4.7μF,25V
C12			NDC21HJ-8R0X	CAPACITOR	8pF,50V	C253			NCB21EK-563X	CAPACITOR	0.056μF,25V
C14			NCB21EK-104X	CAPACITOR	0.1μF,25V	C254			QEPF1HM-105	NP E CAPACITOR	1μF,50V
C15			NCB21HK-103X	CAPACITOR	0.01μF,50V	C255			QEKJ0JM-227	E CAPACITOR	220μF,6.3V
C16			NCB21EK-104X	CAPACITOR	0.1μF,25V	C256			NCB21CK-224X	CAPACITOR	0.22μF,16V
C17			QEKJ1HM-335	E CAPACITOR	3.3μF,50V	C257			QEKJ1HM-105	E CAPACITOR	1μF,50V
C18			QEKJ1HM-105	E CAPACITOR	1μF,50V	C258			NCB21CK-224X	CAPACITOR	0.22μF,16V
C19			QEKJ1HM-225	E CAPACITOR	2.2μF,50V	C259			QEKJ0JM-227	E CAPACITOR	220μF,6.3V
C20			NCB21AK-105X	CAPACITOR	1μF,10V	C301			NDC21HJ-151X	CAPACITOR,C	150pF,50V
C21			NCB21EK-104X	CAPACITOR	0.1μF,25V	C302			QEKJ1HM-225	E CAPACITOR,C	2.2μF,50V
C22			QEKJ0JM-476	E CAPACITOR	47μF,6.3V	C303			NCB21HK-682X	CAPACITOR,C	0.0068μF,50V
C23			NCB21EK-104X	CAPACITOR	0.1μF,25V	C304			NCB21HK-682X	CAPACITOR,C	0.0068μF,50V
C24			NCB21EK-104X	CAPACITOR	0.1μF,25V	C305			NCB21HK-103X	CAPACITOR,C	0.01μF,50V
C25			NDC21HJ-6R0X	CAPACITOR	6pF,50V	C307			NDC21HJ-151X	CAPACITOR,C	150pF,50V

#	△	REF No.	PART No.	PART NAME, DESCRIPTION	#	△	REF No.	PART No.	PART NAME, DESCRIPTION
C308			NCB21HK-103X	CAPACITOR,C	C2231			QEKJ1EM-106	E CAPACITOR,A,C
C309			NCB21EK-104X	CAPACITOR,C	C2251			NCB21HK-103X	CAPACITOR
C310			NCB21HK-103X	CAPACITOR,C	C2252			NCB21HK-103X	CAPACITOR
C311			NCB21HK-103X	CAPACITOR,C	C2253			NCB21HK-103X	CAPACITOR
C312			NCB21HK-102X	CAPACITOR,C	C2254			QEKJ0JM-476	E CAPACITOR
C313			QERF1HM-474	E CAPACITOR,C	C2255			NCB21HK-103X	CAPACITOR
C315			QERF1HM-105	E CAPACITOR,C	C2256			NCB21HK-103X	CAPACITOR
C316			NCB21HK-103X	CAPACITOR,C	C2257			NCB21HK-103X	CAPACITOR
C317			NCB21HK-681X	CAPACITOR,C	C2258			NDC21HJ-181X	CAPACITOR,A,C
C318			NCB21EK-223X	CAPACITOR,C	C2259			QEKJ1HM-334	E CAPACITOR
C319			QERF1HM-105	E CAPACITOR,C	C3004			NCB21EK-473X	CAPACITOR
C320			NCB21HK-103X	CAPACITOR,C	C3011			QETL0JM-338	E CAPACITOR
C321			NDC21HG-301X	CAPACITOR,C	C3012			QEKJ0JM-476	E CAPACITOR
C322			NCB21CK-474X	CAPACITOR,C	C3013			NCB21HK-103X	CAPACITOR
C323			QEKJ0JM-476	E CAPACITOR,C	C3014			QERF0JM-476	E CAPACITOR
C2001			QEKJ1HM-475	E CAPACITOR	C3016			NCB21EK-473X	CAPACITOR
C2002			QEKJ1HM-105	E CAPACITOR	C3022			NCB21EK-473X	CAPACITOR
C2003			QEKJ0JM-476	E CAPACITOR	C3024			NDC21HJ-120X	CAPACITOR
C2005			QEKJ1HM-475	E CAPACITOR	C3025			QAT3725-300Z	TRIM CAPACITOR,TIMER CLOCK,A
C2006			NCB21HK-123X	CAPACITOR	C3030			QEKJ0JM-476	E CAPACITOR
C2007			QEKJ1CM-226	E CAPACITOR	C3031			NCB21EK-473X	CAPACITOR
C2008			QEKJ1HM-475	E CAPACITOR	C3033			NCB21EK-473X	CAPACITOR
C2009			NCB21HK-102X	CAPACITOR	C3036			NDC21HJ-180X	CAPACITOR
C2010			NCB21HK-152X	CAPACITOR	C3037			NDC21HJ-120X	CAPACITOR
C2011			QEKJ1HM-475	E CAPACITOR	C3041			NDC21HJ-180X	CAPACITOR,B,C
C2012			QEKJ1HM-475	E CAPACITOR	C3045			NDC21HJ-101X	CAPACITOR
C2013			NDC21HJ-180X	CAPACITOR	C3048			NCB21HK-103X	CAPACITOR
C2016			NDC21HJ-101X	CAPACITOR	C3050			NCF21EZ-104X	CAPACITOR
C2051			NCB21HK-331X	CAPACITOR	C3051			NCB21EK-104X	CAPACITOR
C2053			NCB21HK-472X	CAPACITOR	C3052			QEKJ1EM-106	E CAPACITOR
C2054			NCB21EK-223X	CAPACITOR	C3054			NCB21HK-222X	CAPACITOR
C2055			QEKJ1EM-106	E CAPACITOR	C3056			NCB21EK-104X	CAPACITOR
C2061			QFLC1HJ-823Z	F CAPACITOR	C3057			NCB21HK-103X	CAPACITOR
C2201			QEKJ1EM-106	E CAPACITOR	C3071			QEKJ1CM-336	E CAPACITOR
C2202			QEKJ1HM-475	E CAPACITOR	C3073			QDYB1CM-103Y	CAPACITOR
C2203			QEKJ1HM-475	E CAPACITOR	C3074			NCB21HK-103X	CAPACITOR
C2204			QEKJ0JM-336	E CAPACITOR	C3075			NCB21HK-103X	CAPACITOR
C2205			QEKJ1EM-106	E CAPACITOR	C3076			NCB21HK-103X	CAPACITOR
C2206			QEKJ1EM-106	E CAPACITOR	C4002			NCB21HK-103X	CAPACITOR
C2207			NCB21HK-153X	CAPACITOR	C4004			QERF1CM-226	E CAPACITOR
C2208			NCB21HK-153X	CAPACITOR	C4005			NCB21HK-222X	CAPACITOR
C2209			QERF1CM-106	E CAPACITOR	C4006			QERF0JM-476	E CAPACITOR
C2210			QERF1CM-106	E CAPACITOR	C4008			QEQF1HM-105	NP E CAPACITOR
C2211			QEKJ0JM-336	E CAPACITOR	C4009			NCB21HK-563X	CAPACITOR
C2212			QERF0JM-476	E CAPACITOR	C4010			NCB21EK-223X	CAPACITOR
C2213			NCB21EK-104X	CAPACITOR	C4011			NCB21EK-104X	CAPACITOR
C2214			QEKJ1EM-106	E CAPACITOR	C4012			QERF1HM-105	E CAPACITOR
C2215			QEKJ1EM-106	E CAPACITOR	C4014			NDC21HJ-101X	CAPACITOR
C2216			QEKJ1CM-476	E CAPACITOR	C4015			NCB21HK-102X	CAPACITOR
C2217			NCB21EK-104X	CAPACITOR	C4016			NDC21HJ-101X	CAPACITOR
C2218			QEKJ1EM-106	E CAPACITOR,A,B	C4031			QEKJ1CM-336	E CAPACITOR
C2219			QEKJ1CM-226	E CAPACITOR,A,B	△ C5001			QFZ9072-473	F CAPACITOR
C2220			QEKJ1EM-106	E CAPACITOR	△ C5004			QCZ9071-222	CAPACITOR
C2221			NCB21EK-223X	CAPACITOR	C5006			QEZO375-686	E CAPACITOR
C2222			NCB21HK-103X	CAPACITOR	C5101			QCZO212-472	CAPACITOR
C2223			NCB21EK-473X	CAPACITOR	C5102			QCZO302-330Z	CAPACITOR
C2224			NCB21EK-473X	CAPACITOR	C5104			QEKJ1HM-105	E CAPACITOR
C2225			NCB21AK-105X	CAPACITOR	C5105			QFN31HJ-153	F CAPACITOR
C2226			NCB21AK-105X	CAPACITOR	C5106			QCB1HJ-271	CAPACITOR
C2227			QERF1CM-106	E CAPACITOR	C5107			QFV91HJ-104	F CAPACITOR,B,C
C2230			QEKJ1EM-106	E CAPACITOR,A,C	C5202			QETN1CM-108	E CAPACITOR

#	△	REF No.	PART No.	PART NAME, DESCRIPTION		#	△	REF No.	PART No.	PART NAME, DESCRIPTION	
C5203			QEMT1AM-128	E CAPACITOR	1200μF,10V	C7166			NCB21HK-681X	CAPACITOR	680pF,50V
C5204			QETJ2AM-475	E CAPACITOR	4.7μF,100V	C7168			NCB21HK-681X	CAPACITOR	680pF,50V
C5206			QEKJ1CM-476	E CAPACITOR	47μF,16V	C7169			NCB21HK-681X	CAPACITOR	680pF,50V
C5207			QEKJ1CM-107	E CAPACITOR	100μF,16V	C7170			NCB21HK-821X	CAPACITOR	820pF,50V
C5301			QEKJ1CM-107	E CAPACITOR	100μF,16V	C7171			NCB21HK-821X	CAPACITOR	820pF,50V
C5303			QEKJ1CM-107	E CAPACITOR	100μF,16V	C7182			NCB21HK-681X	CAPACITOR	680pF,50V
C5305			QFVF1HJ-274Z	F CAPACITOR	0.27μF,50V	C7183			NCB21HK-681X	CAPACITOR	680pF,50V
C5307			QEKJ1CM-476	E CAPACITOR	47μF,16V	C7197			NCB21EK-104X	CAPACITOR	0.1μF,25V
C5308			QEKJ1CM-107	E CAPACITOR	100μF,16V	L1			QQL29BJ-100Z	COIL	10μH
C6008			NCB21HK-123X	CAPACITOR,C	0.012μF,50V	L2			QQL071J-121Y	COIL	120μH
C6013			NCB21HK-103X	CAPACITOR	0.01μF,50V	L3			QQL29BJ-100Z	COIL	10μH
C6016			NDC21HJ-101X	CAPACITOR,A,B	100pF,50V	L4			QQL29BJ-100Z	COIL	10μH
C6027			NDC21HJ-151X	CAPACITOR,A,B	150pF,50V	L5			QQR0521-012Z	NOISE FILTER	
C6032			NCB21EK-473X	CAPACITOR,A,B	0.047μF,25V	L12			QQR0967-001	COIL	12μH
C6037			QEKJ1HM-106	E CAPACITOR	10μF,50V	L13			QQL071J-330Y	COIL	33μH
C6056			NDC21HJ-470X	CAPACITOR,A,B	47pF,50V	L14			QQL071J-101Y	COIL,C	100μH
C6501			QEKJ1EM-106	E CAPACITOR	10μF,25V	L15			QQL29BJ-100Z	COIL	10μH
C6502			NCB21HK-103X	CAPACITOR	0.01μF,50V	L18			QQL071J-220Y	COIL	22μH
C6704			NCB21HK-103X	CAPACITOR	0.01μF,50V	L19			QQL071J-120Y	COIL	12μH
C6707			NDC21HJ-470X	CAPACITOR	47pF,50V	L20			QUY153-050Y	IM BUS WIRE	
C6708			NDC21HJ-8R0X	CAPACITOR	8pF,50V	L24			QQL071J-270Y	COIL	27μH
C6709			NDC21HJ-2R0X	CAPACITOR	2pF,50V	L27			QQL071J-330Y	COIL	33μH
C6713			NCF21CZ-224X	CAPACITOR	0.22μF,16V	L28			QQL071J-680Y	COIL	68μH
C6714			NCB21HK-222X	CAPACITOR	0.0022μF,50V	L201			QQL071J-150Y	COIL	15μH
C6715			QEKJ1HM-225	E CAPACITOR	2.2μF,50V	L202			QUY153-050Y	IM BUS WIRE	
C6716			NCB21HK-222X	CAPACITOR	0.0022μF,50V	L203			QQL071J-330Y	COIL	33μH
C6717			QEKJ1HM-225	E CAPACITOR	2.2μF,50V	L204			QQL071J-151Y	COIL	150μH
C6719			QEKJ1EM-106	E CAPACITOR	10μF,25V	L251			QUY153-050Y	IM BUS WIRE	
C6720			QEKJ1EM-106	E CAPACITOR	10μF,25V	L252			QUY153-050Y	IM BUS WIRE	
C6721			NCB21HK-103X	CAPACITOR	0.01μF,50V	L301			QQL29BJ-100Z	COIL,C	10μH
C6723			NCB21HK-103X	CAPACITOR	0.01μF,50V	L302			QQL29BJ-6R8Z	COIL,C	6.8μH
C6724			QEKJ1HM-225	E CAPACITOR,C	2.2μF,50V	L303			QQL231J-270Y	COIL,C	27μH
C7011			QEKJ0JM-227	E CAPACITOR	220μF,6.3V	L2001			QUY153-050Y	IM BUS WIRE	
C7103			NCB21HK-681X	CAPACITOR,A,C	680pF,50V	L2201			QUY153-050Y	IM BUS WIRE	
C7104			NCB21HK-681X	CAPACITOR,A,C	680pF,50V	L2251			QQL29BJ-100Z	COIL	10μH
C7117			QETN0JM-477	E CAPACITOR	470μF,6.3V	L2252			QQL29BJ-151Z	COIL,A,C	150μH
C7119			NCB21HK-681X	CAPACITOR	680pF,50V	L3001			QQL231J-100Y	COIL	10μH
C7120			NCB21HK-681X	CAPACITOR	680pF,50V	L4001			QUY153-050Y	IM BUS WIRE	
C7128			QEKJ1CM-107	E CAPACITOR	100μF,16V	L5201			PELN1184	COIL	33μH
C7129			NCB21HK-103X	CAPACITOR	0.01μF,50V	L5202			PELN1184	COIL	33μH
C7131			QETJ0JM-477	E CAPACITOR,A,C	470μF,6.3V	L6001			QQL29BK-1R0Z	COIL,A,B	1.0μH
C7134			QEKJ1HM-225	E CAPACITOR,B	2.2μF,50V				QQL29BJ-100Z	COIL,C	10μH
			QEKJ1HM-474	E CAPACITOR,A,C	0.47μF,50V	L6002			QQL29BJ-100Z	COIL	10μH
C7135			QEKJ1HM-225	E CAPACITOR,B	2.2μF,50V	L6501			QQL29BJ-3R3Z	COIL	3.3μH
			QEKJ1HM-474	E CAPACITOR,A,C	0.47μF,50V	L6502			QUY153-050Y	IM BUS WIRE	
C7136			QEKJ1HM-474	E CAPACITOR	0.47μF,50V	L7101			QQL231J-R22Y	COIL	0.22μH
C7137			NRSA02J-0R0X	MG RESISTOR	0Ω,1/10W	L7102			QQL231J-R22Y	COIL	0.22μH
C7138			NCB21HK-103X	CAPACITOR	0.01μF,50V	L7105			QQL231J-1R0Y	COIL	1.0μH
C7139			QEKJ1HM-106	E CAPACITOR	10μF,50V	L7107			QUY153-050Y	IM BUS WIRE	
C7140			NCB21EK-104X	CAPACITOR	0.1μF,25V	L7109			QQL231J-1R0Y	COIL,A,C	1.0μH
C7141			NCB21HK-103X	CAPACITOR	0.01μF,50V	L7113			QQL231J-1R0Y	COIL,A,C	1.0μH
C7143			NDC21HJ-330X	CAPACITOR,A,C	33pF,50V	X1			QAX0576-001Z	CRYSTAL RESONATOR	
C7144			NDC21HJ-680X	CAPACITOR,A,C	68pF,50V	X3001			QAX0444-001	CRYSTAL RESONATOR,B,C	
C7153			NDC21HJ-330X	CAPACITOR	33pF,50V				QAX0445-001	CRYSTAL RESONATOR,A	
C7155			NDC21HJ-680X	CAPACITOR,A,C	68pF,50V	X3002			QAX0527-001	CRYSTAL RESONATOR	
C7156			QEKJ1HM-474	E CAPACITOR,A,C	0.47μF,50V	X6701			QAX0443-001	CRYSTAL RESONATOR	
C7157			QEPF1HM-474	NP E CAPACITOR,A,C	0.47μF,50V	S3001			QSW0602-004	PUSH SWITCH,REC.SAFETY	
C7158			QEKJ1HM-474	E CAPACITOR,A,C	0.47μF,50V	S3002			QSW0602-004	PUSH SWITCH,S.CASS	
C7159			QEKJ1HM-225	E CAPACITOR,A,C	2.2μF,50V	S7001			QSW0456-002Z	TACT SWITCH	
C7160			NDC21HJ-330X	CAPACITOR,A,C	33pF,50V	S7002			QSW0456-002Z	TACT SWITCH	
C7164			NCB21HK-681X	CAPACITOR	680pF,50V	S7004			QSW0456-002Z	TACT SWITCH	

#	△ REF No.	PART No.	PART NAME, DESCRIPTION	
S7006		QSW0456-002Z	TACT SWITCH	
S7008		QSW0456-002Z	TACT SWITCH	
S7010		QSW0456-002Z	TACT SWITCH	
S7012		QSW0456-002Z	TACT SWITCH	
S7014		QSW0456-002Z	TACT SWITCH	
S7015		QSW0456-002Z	TACT SWITCH	
S7016		QSW0456-002Z	TACT SWITCH	
K2001		NQL103K-R10X	COIL	
K2002		NQL103K-R10X	COIL	
K2003		NQR0403-003X	FERRATE BEADS	
K2004		NRSA02J-0R0X	MG RESISTOR	0Ω,1/10W
K2251		NQR0007-002X	FERRATE BEADS	
K2252		NQR0007-002X	FERRATE BEADS	
K2253		NQR0007-002X	FERRATE BEADS	
K5101		QQR0678-001Z	FERRATE BEADS	
K5102		QUY153-050Y	IM BUS WIRE	
K6701		NQR0200-003X	FERRATE BEADS	
K6702		NQR0200-003X	FERRATE BEADS	
K6703		NQR0200-003X	FERRATE BEADS	
K6704		NQR0200-003X	FERRATE BEADS	
K6705		NQR0200-003X	FERRATE BEADS	
K6706		NQR0200-003X	FERRATE BEADS	
K6707		NQR0200-003X	FERRATE BEADS,C	
PC3001		RPI-304J	IC(PHOTO SENSOR)	
PC3002		RPI-304J	IC(PHOTO SENSOR)	
△ PC5101		PS2561L1-1/L/	IC(PHOTO COUPLE)	
T2051		PELN0832	OSC TRANSFORMER	
△ T5001		QQS0083-001	SW TRANSF	
TU6001		QAU0261-002	TUNER,A,B	
		QAU0266-001	TUNER,C	
SD1		LP21105-001A	SHIELD CASE	
DI7001		LTG-Y2K16M-02J	LE DIODE	
ET1		PQ21623-2-5	EARTH PLATE(RF)	
HS1		LP40090-001A	HEAT SINK,Q5101	
JS3001		QSW0954-002	ROTARY ENCODER	
△ TB1		LP20317-011B	TERMINAL BOARD(PAL)	
J7101		PEMC1104	RGB21PIN SOCKET	
J7102		PEMC1104	RGB21PIN SOCKET	
J7103		QNN0292-003	PIN JACK	
J7105		QNN0381-002	PIN JACK	
OT1		QYTDST3006Z	SCREW,Q5101	
FC5001		QNG0006-001Z	FUSE CLIP,F5001	
FC5002		QNG0006-001Z	FUSE CLIP,F5001	
△ LF5002		QQR0978-001	LINE FILTER	
CN1		QGF1201C2-09	FPC CONNECTOR,(1-9)DRUM	
CN2001		QGF1207C1-06	FPC CONNECTOR,(1-6)A/C HEAD	
CN2002		QGB2532J1-02	CONNECTOR,(1-2)FE HEAD	
CN3001		QGB2032M4-12	CONNECTOR,(1-12)CAPSTAN MOTOR	
△ CN5001		QGA7901C3-02	CONNECTOR,(1-2)AC IN	
△ CP3001		QMFZ050-1R5X-E	FUSE	T1.5A
△ CP4001		QMFZ050-1R5X-E	FUSE	T1.5A
△ F5001		QMF51E2-2R0J1	FUSE	T2.0A,AC250V

A/C HEAD BOARD ASSEMBLY <12>

PW1 LPA10158-01A1 A/C HEAD BOARD ASSY

#	△ REF No.	PART No.	PART NAME, DESCRIPTION	

S-SUB BOARD ASSEMBLY <15>				
PW1		LPA10164-01D	S-SUB BOARD ASSY,A,B	
		LPA10164-02C	S-SUB BOARD ASSY,C	
IC501		JCP8038	IC	
IC502		VC2076DP	IC	
IC581		MM1503XN	IC	
Q581		2SC4081/QRS/-X	TRANSISTOR	
		or 2SD1819A/QRS/-X	TRANSISTOR	
		or 2PC4081/R/-X	TRANSISTOR	
Q582		2SA1576A/QR/-X	TRANSISTOR	
		or 2PA1576/R/-X	TRANSISTOR	
		or 2SB1218A/QR/-X	TRANSISTOR	
Q583		2SA1576A/QR/-X	TRANSISTOR	
		or 2SB1218A/QR/-X	TRANSISTOR	
		or 2PA1576/R/-X	TRANSISTOR	
Q584		DTC144WU	DIGI TRANSISTOR	
		or PDTTC144WU	DIGI TRANSISTOR	
		or UN521E	DIGI TRANSISTOR	
		or RN1309	DIGI TRANSISTOR	
Q585		2SC4081/QRS/-X	TRANSISTOR	
		or 2PC4081/R/-X	TRANSISTOR	
		or 2SD1819A/QRS/-X	TRANSISTOR	
Q586		2SA1576A/QR/-X	TRANSISTOR	
		or 2SB1218A/QR/-X	TRANSISTOR	
		or 2PA1576/R/-X	TRANSISTOR	
R502		NRSA02J-0R0X	MG RESISTOR	0Ω,1/10W
R503		NRSA02J-221X	MG RESISTOR	220Ω,1/10W
R504		NRSA02J-332X	MG RESISTOR	3.3kΩ,1/10W
R505		NRSA02J-392X	MG RESISTOR	3.9kΩ,1/10W
R506		NRSA02J-391X	MG RESISTOR	390Ω,1/10W
R507		NRSA02J-122X	MG RESISTOR	1.2kΩ,1/10W
R508		NRSA02J-151X	MG RESISTOR	150Ω,1/10W
R509		NRSA02J-162X	MG RESISTOR	1.6kΩ,1/10W
R510		NRVA02D-102X	CMF RESISTOR	1kΩ,1/10W
R511		NRVA02D-471X	CMF RESISTOR	470Ω,1/10W
R512		NRVA02D-102X	CMF RESISTOR	1kΩ,1/10W
R513		NRVA02D-152X	CMF RESISTOR	1.5kΩ,1/10W
R514		NRVA02D-332X	CMF RESISTOR	3.3kΩ,1/10W
R515		NRVA02D-332X	CMF RESISTOR	3.3kΩ,1/10W
R516		NRSA02J-0R0X	MG RESISTOR	0Ω,1/10W
R517		NRSA02J-0R0X	MG RESISTOR	0Ω,1/10W
R525		NRSA02J-125X	MG RESISTOR	1.2MΩ,1/10W
R526		NRSA02J-0R0X	MG RESISTOR	0Ω,1/10W
R527		NRSA02J-332X	MG RESISTOR,A,B	3.3kΩ,1/10W
R535		NRSA02J-101X	MG RESISTOR	100Ω,1/10W
R536		NRSA02J-101X	MG RESISTOR	100Ω,1/10W
R537		NRSA02J-272X	MG RESISTOR	2.7kΩ,1/10W
R538		NRSA02J-101X	MG RESISTOR	100Ω,1/10W
R580		NRSA02J-102X	MG RESISTOR	1kΩ,1/10W
R581		NRSA02J-331X	MG RESISTOR	330Ω,1/10W
R582		NRSA02J-821X	MG RESISTOR	820Ω,1/10W
R583		NRSA02J-221X	MG RESISTOR	220Ω,1/10W
R584		NRSA02J-272X	MG RESISTOR,A,B	2.7kΩ,1/10W
		NRSA02J-332X	MG RESISTOR,C	3.3kΩ,1/10W
R585		NRSA02J-822X	MG RESISTOR	8.2kΩ,1/10W
R586		NRSA02J-102X	MG RESISTOR	1kΩ,1/10W
R587		NRSA02J-222X	MG RESISTOR	2.2kΩ,1/10W
R588		NRSA02J-222X	MG RESISTOR	2.2kΩ,1/10W

#	△	REF No.	PART No.	PART NAME, DESCRIPTION
R589			NRSA02J-821X	MG RESISTOR 820Ω,1/10W
R590			NRSA02J-331X	MG RESISTOR 330Ω,1/10W
R591			NRSA02J-681X	MG RESISTOR 680Ω,1/10W
R592			NRSA02J-102X	MG RESISTOR 1kΩ,1/10W
R593			NRSA02J-102X	MG RESISTOR 1kΩ,1/10W
R594			NRSA02J-103X	MG RESISTOR 10kΩ,1/10W
R595			NRSA02J-682X	MG RESISTOR 6.8kΩ,1/10W
R596			NRSA02J-102X	MG RESISTOR 1kΩ,1/10W
R597			NRSA02J-122X	MG RESISTOR 1.2kΩ,1/10W
R598			NRSA02J-105X	MG RESISTOR 1MΩ,1/10W
R599			NRSA02J-102X	MG RESISTOR 1kΩ,1/10W
C501			QEKJ1HM-225	E CAPACITOR 2.2μF,50V
C502			QEKJ1HM-475	E CAPACITOR 4.7μF,50V
C503			QEKJ1HM-225	E CAPACITOR 2.2μF,50V
C504			NCB21EK-104X	CAPACITOR 0.1μF,25V
C505			QEKJ1HM-475	E CAPACITOR 4.7μF,50V
C506			NCB21HK-103X	CAPACITOR 0.01μF,50V
C507			QEKJ0JM-476	E CAPACITOR 47μF,6.3V
C508			QEKJ1HM-474	E CAPACITOR 0.47μF,50V
C509			QEKJ1EM-106	E CAPACITOR 10μF,25V
C510			QEKJ0JM-476	E CAPACITOR 47μF,6.3V
C511			NCB21HK-103X	CAPACITOR 0.01μF,50V
C512			NCB21HK-103X	CAPACITOR 0.01μF,50V
C513			QEKJ1HM-475	E CAPACITOR 4.7μF,50V
C514			NCB21HK-103X	CAPACITOR 0.01μF,50V
C515			NCB21HK-103X	CAPACITOR 0.01μF,50V
C516			NCB21HK-103X	CAPACITOR 0.01μF,50V
C518			NCB21EK-104X	CAPACITOR 0.1μF,25V
C519			QEKJ1HM-225	E CAPACITOR 2.2μF,50V
C520			QEKJ1HM-475	E CAPACITOR 4.7μF,50V
C521			QEKJ1HM-475	E CAPACITOR 4.7μF,50V
C522			QEKJ1HM-225	E CAPACITOR 2.2μF,50V
C523			QEKJ1HM-225	E CAPACITOR 2.2μF,50V
C524			NDC21HG-301X	CAPACITOR 300pF,50V
C525			NDC21HG-301X	CAPACITOR 300pF,50V
C526			NDC21HJ-101X	CAPACITOR 100pF,50V
C527			NDC21HJ-181X	CAPACITOR 180pF,50V
C528			NDC21HG-271X	CAPACITOR 270pF,50V
C529			NDC21HG-820X	CAPACITOR 82pF,50V
C530			NDC21HG-221X	CAPACITOR 220pF,50V
C531			NDC21HG-301X	CAPACITOR 300pF,50V
C532			NDC21HG-301X	CAPACITOR 300pF,50V
C533			NCB21HK-103X	CAPACITOR 0.01μF,50V
C534			QEKJ0JM-476	E CAPACITOR 47μF,6.3V
C535			NCB21HK-103X	CAPACITOR 0.01μF,50V
C536			NCB21HK-103X	CAPACITOR 0.01μF,50V
C537			NCB21HK-103X	CAPACITOR 0.01μF,50V
C538			NDC21HJ-680X	CAPACITOR 68pF,50V
C557			QEKJ1HM-105	E CAPACITOR 1μF,50V
C559			NCB21HK-103X	CAPACITOR 0.01μF,50V
C560			QEKJ1HM-105	E CAPACITOR 1μF,50V
C562			QEKJ1HM-105	E CAPACITOR,C 1μF,50V
C563			NCB21HK-103X	CAPACITOR,A,B 0.01μF,50V
C564			NCB21HK-103X	CAPACITOR,C 0.01μF,50V
C566			NCB21HK-103X	CAPACITOR,C 0.01μF,50V
C568			NCB21HK-103X	CAPACITOR 0.01μF,50V
C569			NCB21HK-103X	CAPACITOR 0.01μF,50V
C570			NCB21HK-103X	CAPACITOR 0.01μF,50V
C571			NCB21HK-103X	CAPACITOR 0.01μF,50V
C572			NDC21HJ-680X	CAPACITOR 68pF,50V
C573			NDC21HJ-680X	CAPACITOR 68pF,50V

#	△	REF No.	PART No.	PART NAME, DESCRIPTION
C575			NDC21HJ-330X	CAPACITOR 33pF,50V
C576			NCB21HK-103X	CAPACITOR 0.01μF,50V
C577			NDC21HJ-680X	CAPACITOR 68pF,50V
C579			NDC21HJ-820X	CAPACITOR 82pF,50V
C580			QEKJ1CM-226	E CAPACITOR 22μF,16V
C581			QEKJ1CM-107	E CAPACITOR 100μF,16V
C582			NCB21HK-103X	CAPACITOR 0.01μF,50V
C584			NDC21HJ-390X	CAPACITOR 39pF,50V
C585			NDC21HJ-101X	CAPACITOR 100pF,50V
C586			NDC21HJ-181X	CAPACITOR 180pF,50V
C587			NDC21HJ-390X	CAPACITOR 39pF,50V
C588			NCB21HK-103X	CAPACITOR 0.01μF,50V
C589			NCB21HK-103X	CAPACITOR 0.01μF,50V
C590			NCB21HK-103X	CAPACITOR 0.01μF,50V
C591			NDC21HJ-121X	CAPACITOR 120pF,50V
C592			NDC21HJ-220X	CAPACITOR 22pF,50V
C593			NDC21HJ-820X	CAPACITOR 82pF,50V
C594			NDC21HJ-101X	CAPACITOR 100pF,50V
C595			NDC21HJ-220X	CAPACITOR 22pF,50V
C596			QEKJ1HM-475	E CAPACITOR 4.7μF,50V
C597			QEKJ1HM-474	E CAPACITOR 0.47μF,50V
C598			NCB21HK-103X	CAPACITOR 0.01μF,50V
C599			QEKJ1HM-474	E CAPACITOR 0.47μF,50V
L501			QQL29BJ-100Z	COIL 10μH
L503			QQL29BJ-100Z	COIL 10μH
L504			QQL29BJ-100Z	COIL 10μH
L505			QQL071J-1R0Y	COIL 1.0μH
L581			QQL29BJ-100Z	COIL 10μH
L582			QQL071J-390Y	COIL 39μH
L583			QQL071J-120Y	COIL 12μH
L584			QQL071J-101Y	COIL 100μH
L585			QQL071J-330Y	COIL 33μH
L586			QQL071J-470Y	COIL 47μH
L587			QQL071J-560Y	COIL 56μH
L588			QQL071J-101Y	COIL 100μH
L589			QQL071J-560Y	COIL 56μH
L590			QQL071J-120Y	COIL 12μH
BK1			LP40077-001A	BRACKET(PWB)
SD1			LP40954-001A	SHIELD PLATE
CN511			QGG2503K2-30	HEADER PIN
CN513			QGF1208F1-11	FPC CONNECTOR,(1-11)S/P CONV.,C

LOADING MOTOR BOARD ASSEMBLY <55>

PW2 LPA10158-01A2 LODING MOTOR BOARD ASSY

S/P CONVERTER BOARD ASSEMBLY [HR-S5955MS] <87>

PW1 LPA10144-03A S/P CONVERTER BOARD ASSY
IC1601 BA7046F-XE IC
IC1602 74HC132D IC(DIGITAL)
IC1603 74HC4538D IC
IC1604 74HC74D IC
IC1605 TDA8395 IC

#	△ REF No.	PART No.	PART NAME, DESCRIPTION		#	△ REF No.	PART No.	PART NAME, DESCRIPTION	
IC1606		TDA4665T	IC		R1624		NRSA02J-124X	MG RESISTOR	120kΩ,1/10W
IC1607		TDA8501T/N1-X	IC		R1631		NRSA02J-561X	MG RESISTOR	560Ω,1/10W
Q1601		2SB1218A/QR/-X	TRANSISTOR		R1632		NRSA02J-332X	MG RESISTOR	3.3kΩ,1/10W
		or 2SA1576A/QR/-X	TRANSISTOR		R1633		NRSA02J-223X	MG RESISTOR	22kΩ,1/10W
		or 2PA1576R/-X	TRANSISTOR		R1635		NRSA02J-122X	MG RESISTOR	1.2kΩ,1/10W
Q1604		2SD1819A/QRS/-X	TRANSISTOR		R1636		NRSA02J-102X	MG RESISTOR	1kΩ,1/10W
		or 2PC4081/R/-X	TRANSISTOR		R1637		NRSA02J-681X	MG RESISTOR	680Ω,1/10W
		or 2SC4081/QRS/-X	TRANSISTOR		R1638		NRSA02J-101X	MG RESISTOR	100Ω,1/10W
Q1605		2SB1218A/QR/-X	TRANSISTOR		R1639		NRSA02J-331X	MG RESISTOR	330Ω,1/10W
		or 2SA1576A/QR/-X	TRANSISTOR		R1640		NRSA02J-122X	MG RESISTOR	1.2kΩ,1/10W
		or 2PA1576R/-X	TRANSISTOR		R1641		NRSA02J-102X	MG RESISTOR	1kΩ,1/10W
Q1606		2SC1740S/QRS/-T	TRANSISTOR		R1642		NRSA02J-681X	MG RESISTOR	680Ω,1/10W
Q1607		2SD1819A/QRS/-X	TRANSISTOR		R1643		NRSA02J-101X	MG RESISTOR	100Ω,1/10W
		or 2SC4081/QRS/-X	TRANSISTOR		R1644		NRSA02J-331X	MG RESISTOR	330Ω,1/10W
		or 2PC4081/R/-X	TRANSISTOR		R1645		NRSA02J-222X	MG RESISTOR	2.2kΩ,1/10W
Q1608		2SB1218A/QR/-X	TRANSISTOR		R1646		NRSA02J-104X	MG RESISTOR	100kΩ,1/10W
		or 2PA1576R/-X	TRANSISTOR		R1647		NRSA02J-152X	MG RESISTOR	1.5kΩ,1/10W
		or 2SA1576A/QR/-X	TRANSISTOR		R1648		NRSA02J-102X	MG RESISTOR	1kΩ,1/10W
Q1609		2SD1819A/QRS/-X	TRANSISTOR		R1651		NRSA02J-123X	MG RESISTOR	12kΩ,1/10W
		or 2SC4081/QRS/-X	TRANSISTOR		R1652		NRSA02J-102X	MG RESISTOR	1kΩ,1/10W
		or 2PC4081/R/-X	TRANSISTOR		R1653		NRSA02J-184X	MG RESISTOR	180kΩ,1/10W
Q1610		2SD1819A/QRS/-X	TRANSISTOR		R1654		NRSA02J-821X	MG RESISTOR	820Ω,1/10W
		or 2PC4081/R/-X	TRANSISTOR		R1655		NRSA02J-102X	MG RESISTOR	1kΩ,1/10W
		or 2SC4081/QRS/-X	TRANSISTOR		R1656		NRSA02J-222X	MG RESISTOR	2.2kΩ,1/10W
Q1611		2SB1218A/QR/-X	TRANSISTOR		R1657		NRSA02J-561X	MG RESISTOR	560Ω,1/10W
		or 2SA1576A/QR/-X	TRANSISTOR		R1658		NRSA02J-102X	MG RESISTOR	1kΩ,1/10W
		or 2PA1576R/-X	TRANSISTOR		R1659		NRSA02J-681X	MG RESISTOR	680Ω,1/10W
Q1612		2SD1819A/QRS/-X	TRANSISTOR		R1660		NRSA02J-273X	MG RESISTOR	27kΩ,1/10W
		or 2SC4081/QRS/-X	TRANSISTOR		R1661		NRSA02J-333X	MG RESISTOR	33kΩ,1/10W
		or 2PC4081/R/-X	TRANSISTOR		VR1601		QVP0039-471Z	TRIM RESISTOR	
Q1613		2SC4083/NP/-X	TRANSISTOR		VR1602		QVP0039-471Z	TRIM RESISTOR	
Q1614		2SB1218A/QR/-X	TRANSISTOR		VR1603		QVP0039-104Z	TRIM RESISTOR	
		or 2SA1576A/QR/-X	TRANSISTOR		B1601		NRSA02J-101X	MG RESISTOR	100Ω,1/10W
		or 2PA1576R/-X	TRANSISTOR		B1602		NRSA02J-0R0X	MG RESISTOR	0Ω,1/10W
Q1615		2SD1819A/QRS/-X	TRANSISTOR		B1603		NRSA02J-0R0X	MG RESISTOR	0Ω,1/10W
		or 2SC4081/QRS/-X	TRANSISTOR		C1601		QEKJ1CM-476	E CAPACITOR	47μF,16V
		or 2PC4081/R/-X	TRANSISTOR		C1602		NCB21HK-103X	CAPACITOR	0.01μF,50V
Q1616		2SD1819A/QRS/-X	TRANSISTOR		C1605		QEKJ1HM-105	E CAPACITOR	1μF,50V
		or 2SC4081/QRS/-X	TRANSISTOR		C1606		NCB21HK-102X	CAPACITOR	0.001μF,50V
		or 2PC4081/R/-X	TRANSISTOR		C1607		NCB21HK-103X	CAPACITOR	0.01μF,50V
Q1617		2SB1218A/QR/-X	TRANSISTOR		C1608		QEKJ0JM-476	E CAPACITOR	47μF,6.3V
		or 2SA1576A/QR/-X	TRANSISTOR		C1609		NCB21HK-222X	CAPACITOR	0.0022μF,50V
		or 2PA1576R/-X	TRANSISTOR		C1610		QEKJ1HM-105	E CAPACITOR	1μF,50V
D1601		1SS133	DIODE		C1611		NDC21HJ-101X	CAPACITOR	100pF,50V
R1601		NRSA02J-332X	MG RESISTOR	3.3kΩ,1/10W	C1612		NCB21EK-104X	CAPACITOR	0.1μF,25V
R1605		NDC21HJ-331X	CAPACITOR	330pF,50V	C1613		NCB21EK-104X	CAPACITOR	0.1μF,25V
R1606		NRSA02J-0R0X	MG RESISTOR	0Ω,1/10W	C1614		NDC21HJ-471X	CAPACITOR	470pF,50V
R1608		NRSA02J-222X	MG RESISTOR	2.2kΩ,1/10W	C1615		NDC21HJ-561X	CAPACITOR	560pF,50V
R1609		NRSA02J-102X	MG RESISTOR	1kΩ,1/10W	C1616		NCB21EK-104X	CAPACITOR	0.1μF,25V
R1610		NRSA02J-102X	MG RESISTOR	1kΩ,1/10W	C1631		QEKJ1CM-476	E CAPACITOR	47μF,16V
R1611		NRSA02J-272X	MG RESISTOR	2.7kΩ,1/10W	C1632		QEKJ1CM-476	E CAPACITOR	47μF,16V
R1612		NRSA02J-103X	MG RESISTOR	10kΩ,1/10W	C1633		NCB21HK-103X	CAPACITOR	0.01μF,50V
R1615		NRSA02J-331X	MG RESISTOR	330Ω,1/10W	C1634		NDC21HJ-101X	CAPACITOR	100pF,50V
R1616		NRSA02J-474X	MG RESISTOR	470kΩ,1/10W	C1635		NCB21EK-104X	CAPACITOR	0.1μF,25V
R1617		NRSA02J-474X	MG RESISTOR	470kΩ,1/10W	C1636		NCB21CK-224X	CAPACITOR	0.22μF,16V
R1618		NRSA02J-103X	MG RESISTOR	10kΩ,1/10W	C1637		NCB21HK-103X	CAPACITOR	0.01μF,50V
R1619		NRSA02J-134X	MG RESISTOR	130kΩ,1/10W	C1638		QEKJ0JM-476	E CAPACITOR	47μF,6.3V
R1620		NRSA02J-332X	MG RESISTOR	3.3kΩ,1/10W	C1639		NCB21HK-103X	CAPACITOR	0.01μF,50V
R1621		QRE141J-103Y	RESISTOR	10kΩ,1/4W	C1640		QEKJ0JM-476	E CAPACITOR	47μF,6.3V
R1622		QRE141J-103Y	RESISTOR	10kΩ,1/4W	C1641		NCB21HK-103X	CAPACITOR	0.01μF,50V
R1623		NRSA02J-123X	MG RESISTOR	12kΩ,1/10W	C1642		NCB21HK-103X	CAPACITOR	0.01μF,50V

#	△	REF No.	PART No.	PART NAME, DESCRIPTION	#	△	REF No.	PART No.	PART NAME, DESCRIPTION
C1643			NCB21HK-103X	CAPACITOR					
C1644			NCB21HK-103X	CAPACITOR					
C1645			QEKJ1HM-105	E CAPACITOR					
C1646			QEKJ1HM-105	E CAPACITOR					
C1647			NCB21CK-224X	CAPACITOR					
C1648			QEKJ0JM-476	E CAPACITOR					
C1649			NCB21HK-103X	CAPACITOR					
C1650			NCB21CK-224X	CAPACITOR					
C1651			NCB21EK-223X	CAPACITOR					
C1652			NDC21HJ-120X	CAPACITOR					
C1653			NCB21CK-224X	CAPACITOR					
C1654			NCB21HK-103X	CAPACITOR					
C1655			QEKJ0JM-476	E CAPACITOR					
C1656			NCB21HK-103X	CAPACITOR					
L1601			QQL29BJ-100Z	COIL					
L1602			QQL29BJ-100Z	COIL					
L1603			QQL29BJ-100Z	COIL					
L1604			QQL29BJ-100Z	COIL					
X1601			QAX0613-001Z	CRYSTAL RESONATOR					
OT1			QYSDST3006Z	SCREW					
FL1601			QQR1187-001	EQUALIZER					
FL1602			QQR1187-001	EQUALIZER					
BK1			LP30950-001A	BRACKET 1					
BK2			LP30951-001A	BRACKET(2)					
CN1601			QGF1208F1-11	FPC CONNECTOR,(1-11)S-SUB					