

JVC

SCHEMATIC DIAGRAMS

COLOUR TELEVISION

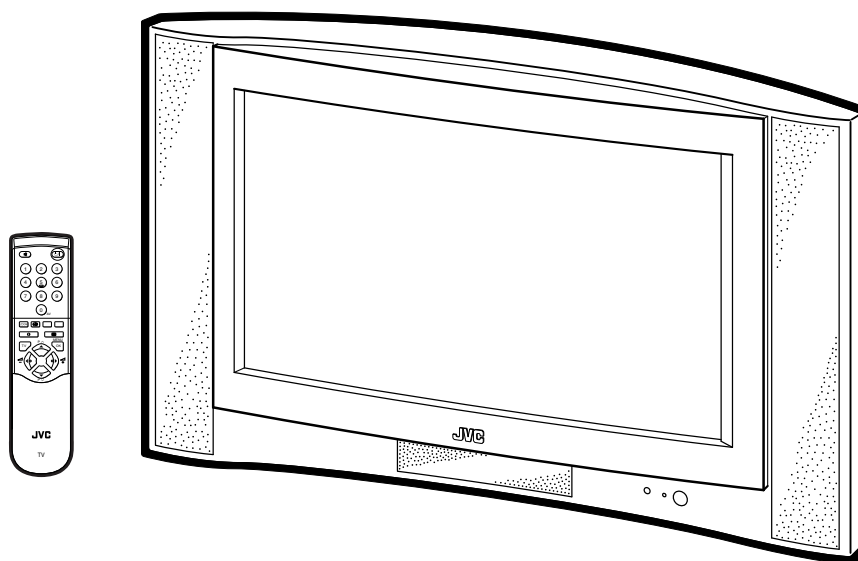
AV28R25EKS

AV28R250EKS

CD-ROM No.SML200203

BASIC CHASSIS

JL



CONTENTS

■ NOTE ON USING CIRCUIT DIAGRAMS	2-1
■ SEMICONDUCTOR SHAPES	2-2
■ BLOCK DIAGRAM	2-3
■ CIRCUIT DIAGRAMS	2-5
■ PATTERN DIAGRAMS	2-19

CONTENTS

SEMICONDUCTOR SHAPES -----

BLOCK DIAGRAM -----

CIRCUIT DIAGRAMS

MAIN PWB CIRCUIT DIAGRAM -----

POWER & DEF PWB CIRCUIT DIAGRAM -----

AV SW PWB CIRCUIT DIAGRAM -----

DOLBY PWB CIRCUIT DIAGRAM -----

CRT SOCKET PWB CIRCUIT DIAGRAM -----

FRONT CONTROL PWB CIRCUIT DIAGRAM -----

SIDE CONTROL PWB CIRCUIT DIAGRAM -----

2-2

2-3

2-5

2-9

2-11

2-13

2-15

2-17

2-18

PATTERN DIAGRAMS

MAIN PWB PATTERN -----

POWER & DEF PWB PATTERN -----

AV SW PWB PATTERN -----

DOLBY PWB PATTERN -----

CRT SOCKET PWB PATTERN -----

FRONT CONTROL PWB PATTERN -----

SIDE CONTROL PWB PATTERN -----

2-19

2-21

2-23

2-24

2-25

2-25

2-26

SEMICONDUCTOR SHAPES

TRANSISTOR

BOTTOM VIEW	FRONT VIEW				TOP VIEW
					CHIP TR

IC

BOTTOM VIEW	FRONT VIEW			TOP VIEW

CHIP IC

TOP VIEW	

AV28R25EKS / AV28R250EKS
STANDARD CIRCUIT DIAGRAM

NOTE ON USING CIRCUIT DIAGRAMS

- 1.SAFETY

The components identified by the symbol and shading are critical for safety. For continued safety replace safety critical components only with manufactures recommended parts.
- 2.SPECIFIED VOLTAGE AND WAVEFORM VALUES

The voltage and waveform values have been measured under the following conditions.

(1)Input signal

: Colour bar signal

(2)Setting positions of each knob/button and variable resistor

: Original setting position when shipped

(3)Internal resistance of tester

:DC 20kΩ /V

(4)Oscilloscope sweeping time

:H ⇒ 20μS/div

:V ⇒ 5mS/div

:Others ⇒ Sweeping time is specified

(5)Voltage values

:All DC voltage values

* Since the voltage values of signal circuit vary to some extent according to adjustments, use them as reference values.

3.INDICATION OF PARTS SYMBOL [EXAMPLE]

- In the PW board

:R1209 → R209

4.INDICATIONS ON THE CIRCUIT DIAGRAM

- (1)Resistors

● Resistance value

No unit :[Ω]

K :[K Ω]

M :[M Ω]

● Rated allowable power

No indication :1/ 16 [W]

Others :As specified

● Type

No indication :Carbon resistor

OMR :Oxide metal film resistor

MFR :Metal film resistor

MPR :Metal plate resistor

UNFR :Uninflammable resistor

FR :Fusible resistor

* Composition resistor 1/2 [W] is specified as 1/2S or Comp.
- (2)Capacitors

● Capacitance value

1 or higher :[pF]

less than 1 :[μF]

● Withstand voltage

No indication :DC50[V]

Others :DC withstand voltage [V]

AC indicated :AC withstand voltage [V]

* Electrolytic Capacitors

47/50[Example]:Capacitance value [μF]/withstand voltage[V]

- Type

No indication :Ceramic capacitor

MM :Metalized mylar capacitor

PP :Polypropylene capacitor

MPP :Metalized polypropylene capacitor

MF :Metalized film capacitor

TF :Thin film capacitor

BP :Bipolar electrolytic capacitor

TAN :Tantalum capacitor

- (3)Coils

No unit :[μH]

Others :As specified

- (4)Power Supply

:B1

:B2 (12V)

:9V

:5V

* Respective voltage values are indicated

- (5)Test point

:Test point

:Only test point display

- (6)Connecting method

:Connector

:Wrapping or soldering

:Receptacle

- (7)Ground symbol

:LIVE side ground

:ISOLATED(NEUTRAL) side ground

:EARTH ground

:DIGITAL ground

5.NOTE FOR REPAIRING SERVICE

- This model's power circuit is partly different in the GND. The difference of the GND is shown by the LIVE : () side GND and the ISOLATED(NEUTRAL) : () side GND. Therefore, care must be taken for the following points.
- (1)Do not touch the LIVE side GND or the LIVE side GND and the ISOLATED(NEUTRAL) side GND simultaneously. If the above caution is not respected, an electric shock may be caused. Therefore, make sure that the power cord is surely removed from the receptacle when, for example, the chassis is pulled out.

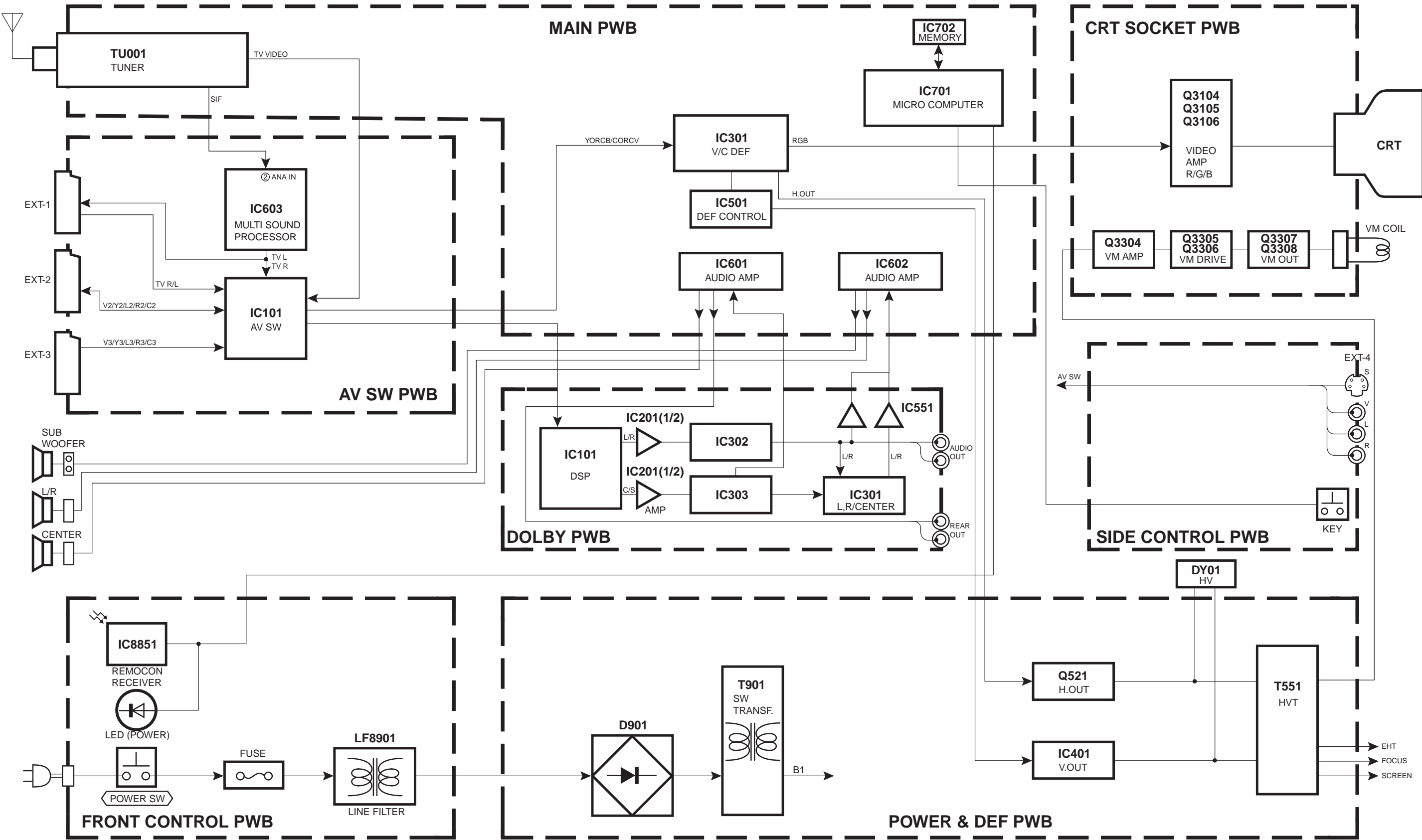
(2)Do not short between the LIVE side GND and ISOLATED(NEUTRAL) side GND or never measure with a measuring apparatus measure with a measuring apparatus (oscilloscope, etc.) the LIVE side GND and ISOLATED(NEUTRAL) side GND at the same time. If the above precaution is not respected , a fuse or any parts will be broken.
- ◇ Since the circuit diagram is a standard one, the circuit and circuit constants may be subject to change for improvement without any notice.

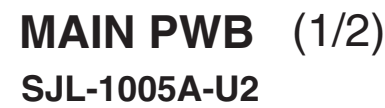
NOTE

◇ Due improvement in performance, some part numbers show in the circuit diagram may not agree with those indicated in the part list.

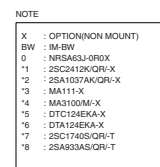
When ordering parts, please use the numbers that appear in the Parts List.

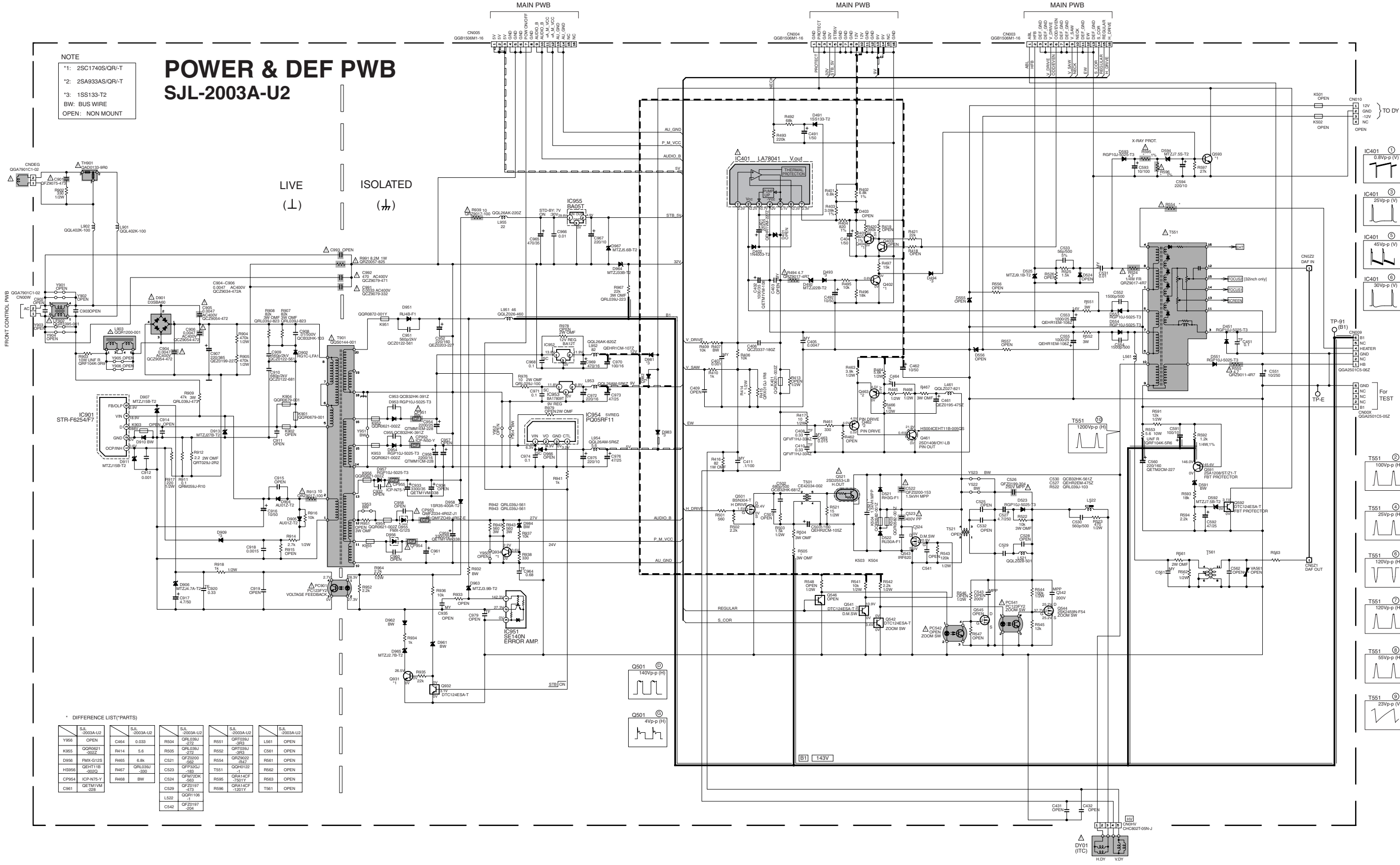
BLOCK DIAGRAM





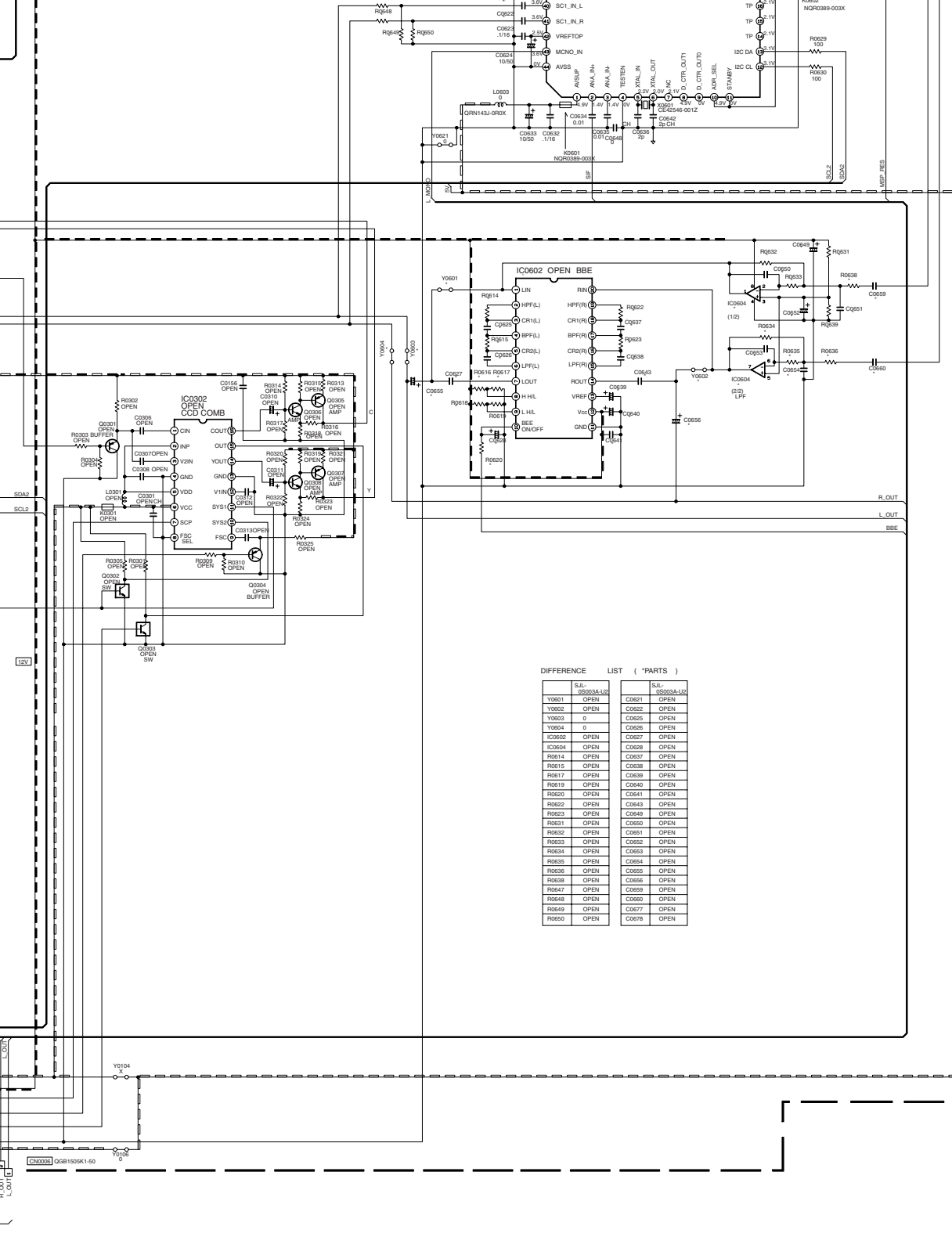
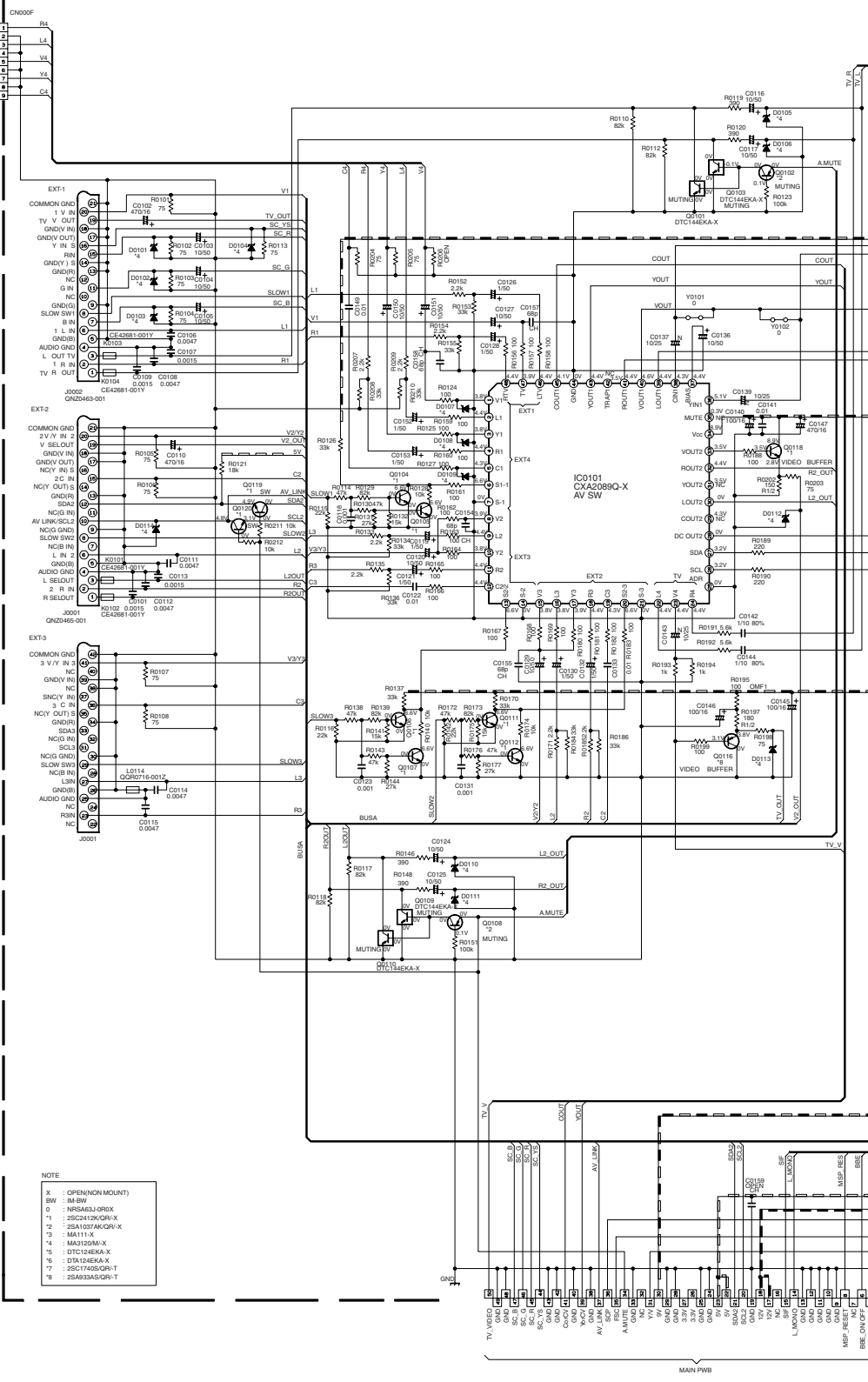
MAIN PWB (2/2)
SJL-1005A-U2

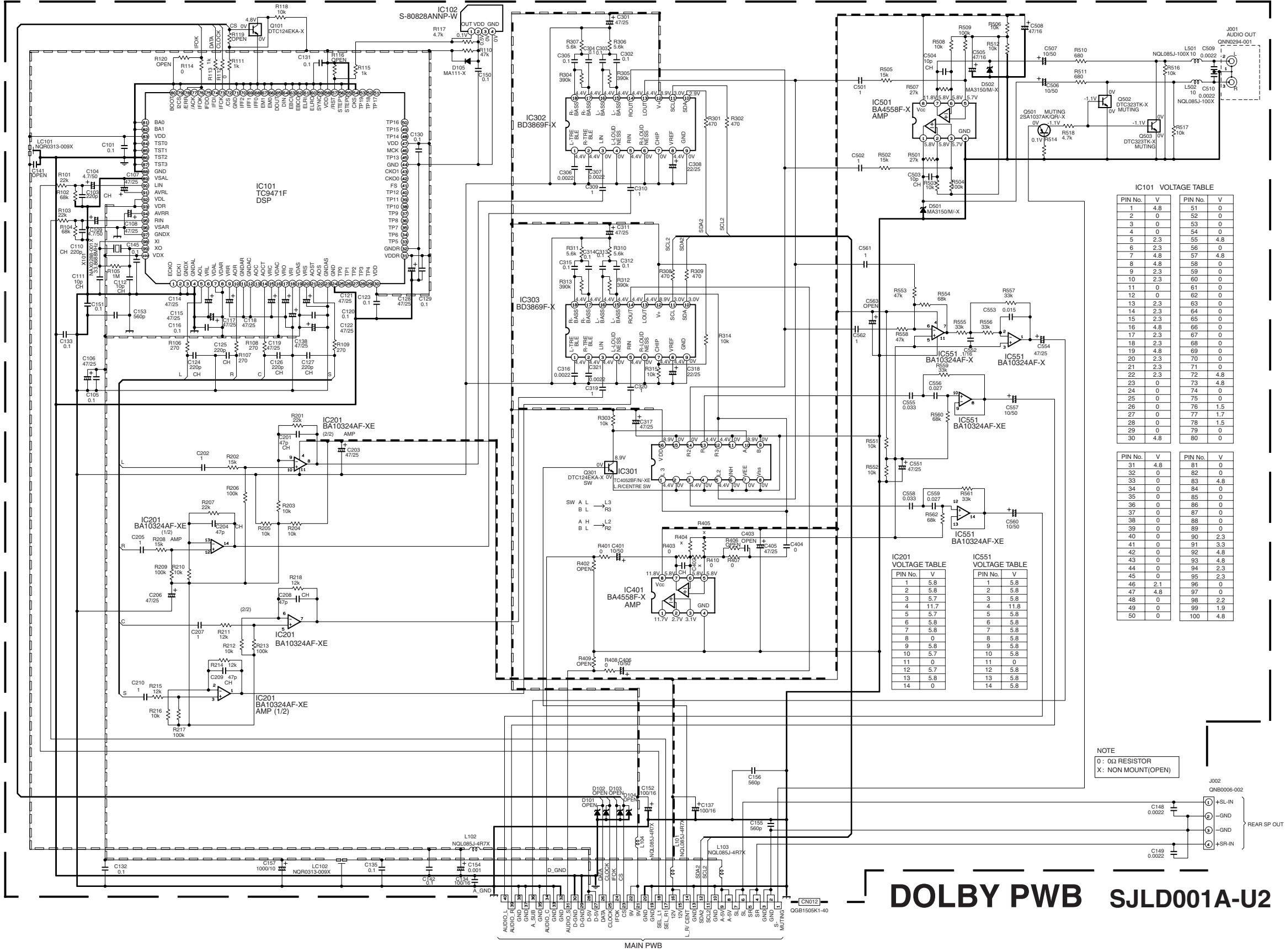




AV SW PWB SJL0S003A-U2

FRONT CONTROL
PWB

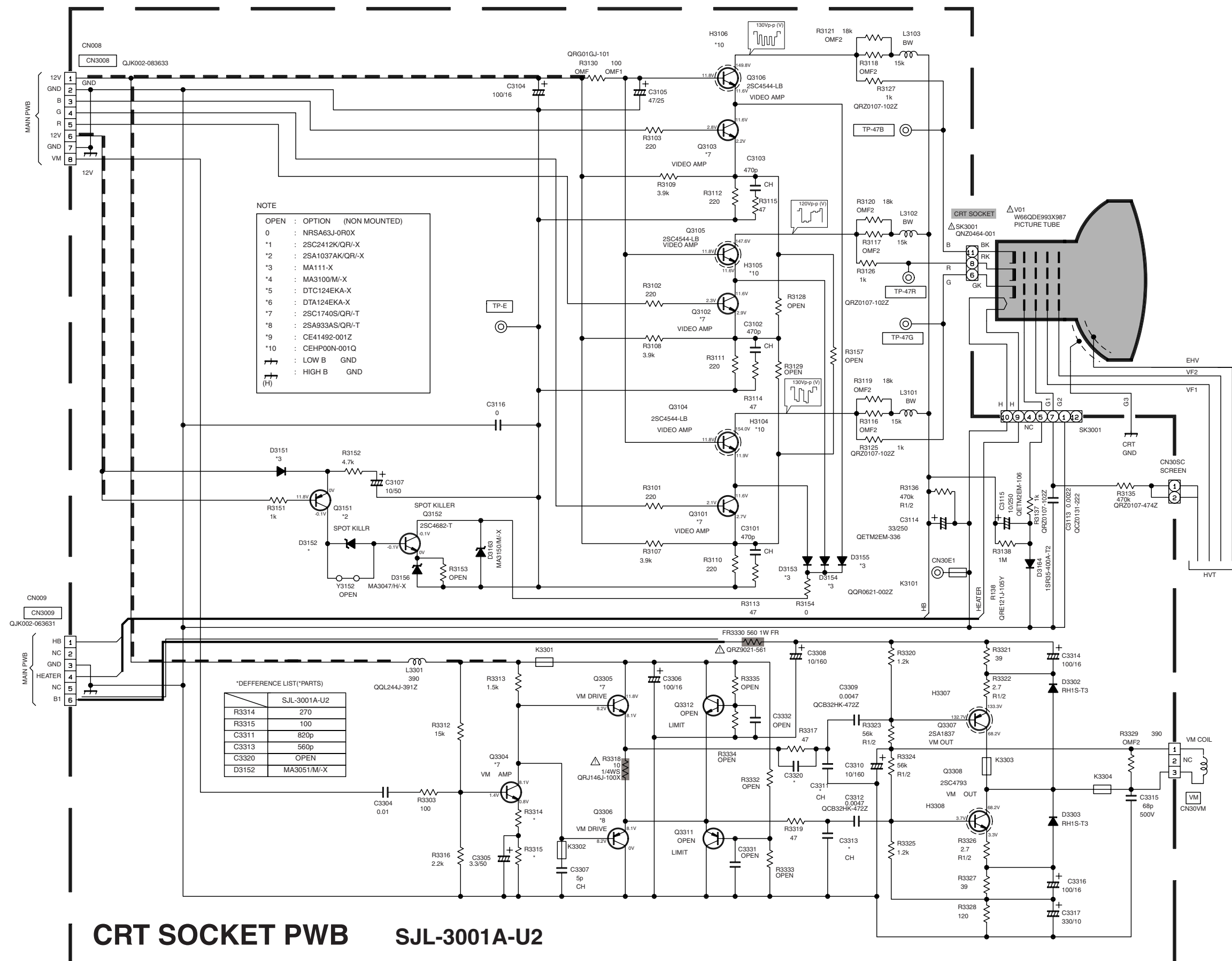


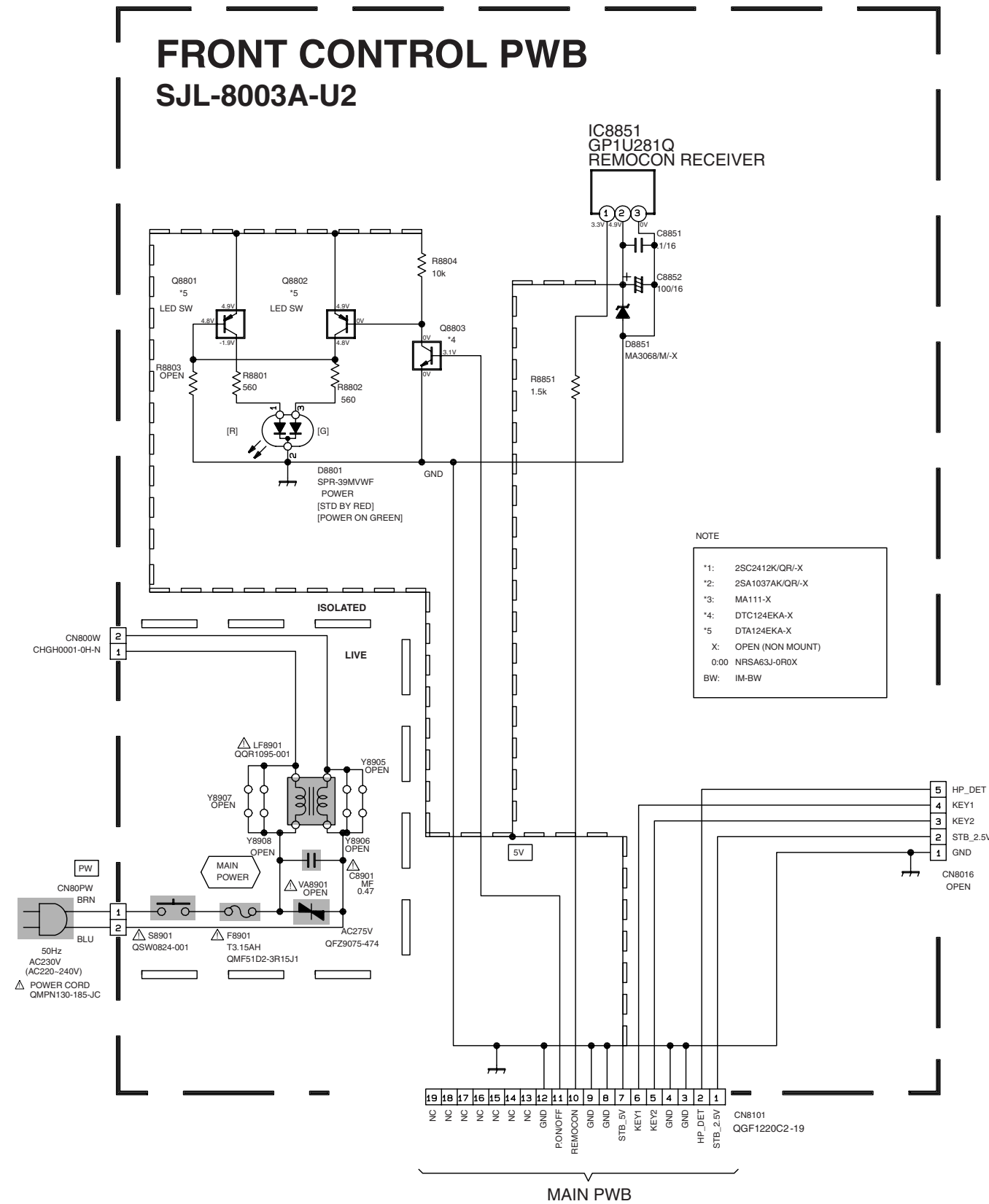


CRT SOCKET PWB CIRCUIT DIAGRAM

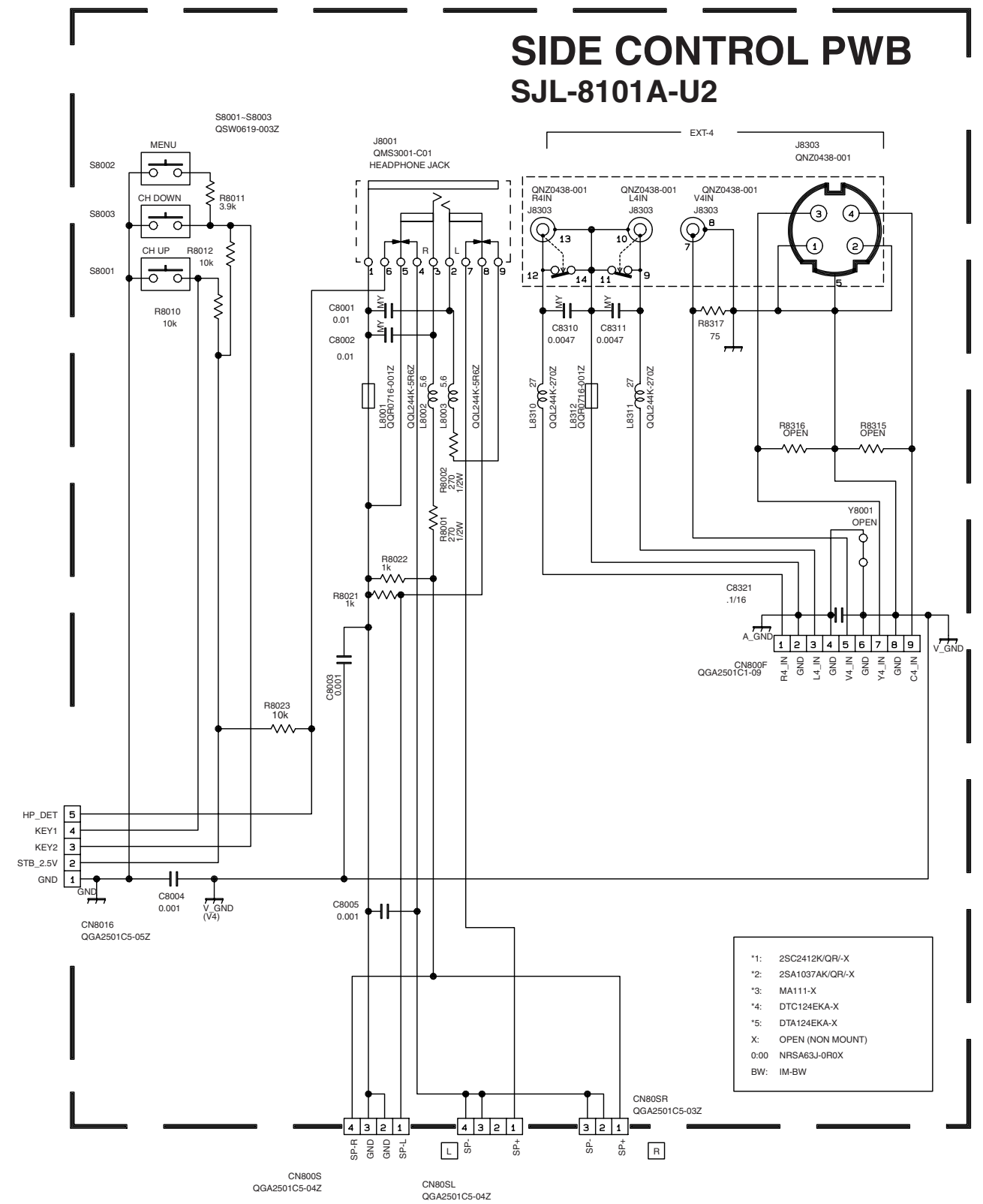
AV28R25EKS
AV28R250EKS

AV28R25EKS
AV28R250EKS



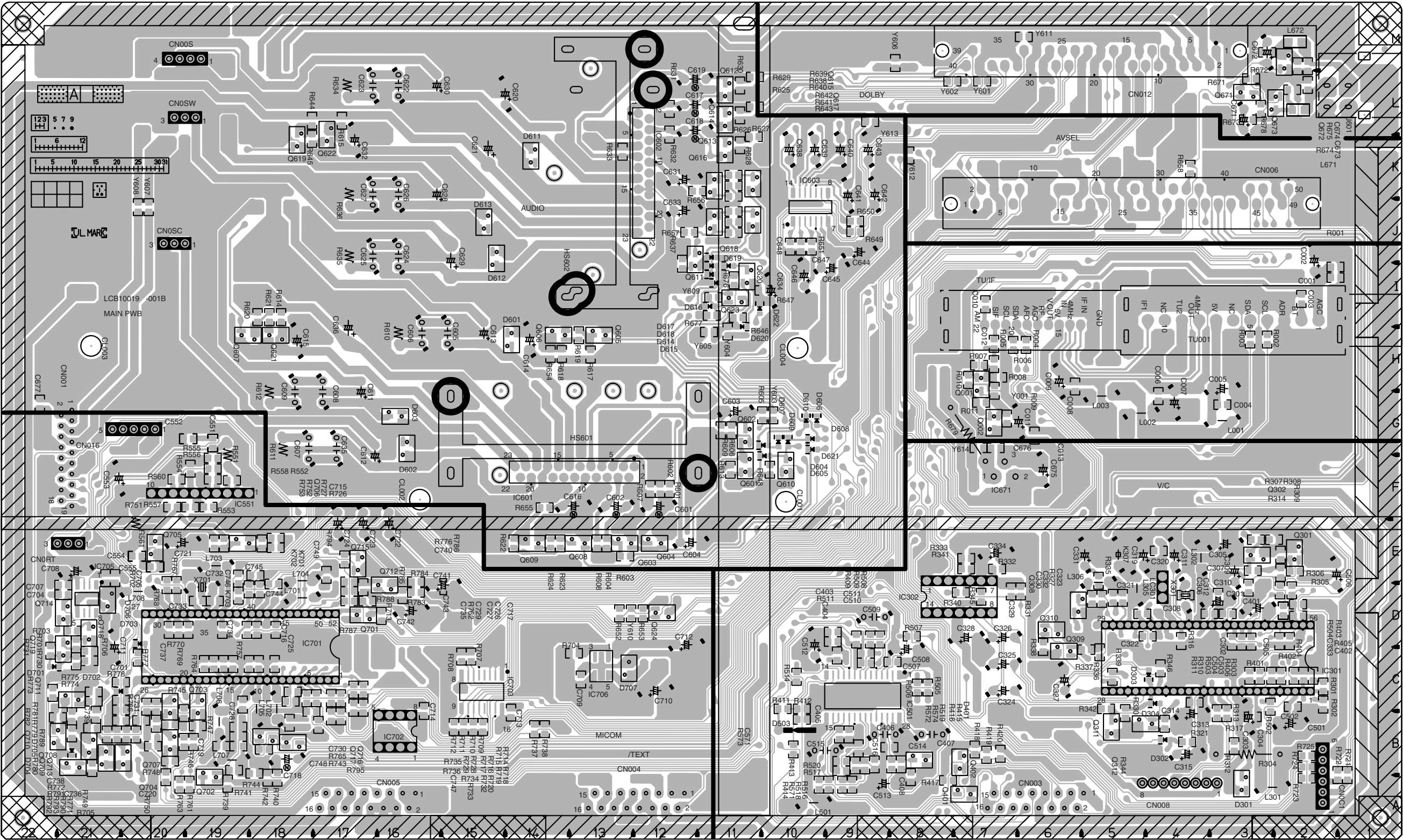


SIDE CONTROL PWB CIRCUIT DIAGRAM



PATTERN DIAGRAMS MAIN PWB PATTERN

FRONT



POWER & DEF PWB PATTERN

AV28R25EKS
AV28R250EKS

AV28R25EKS
AV28R250EKS

FRONT

TP-E
(π)

No.51941

(T)

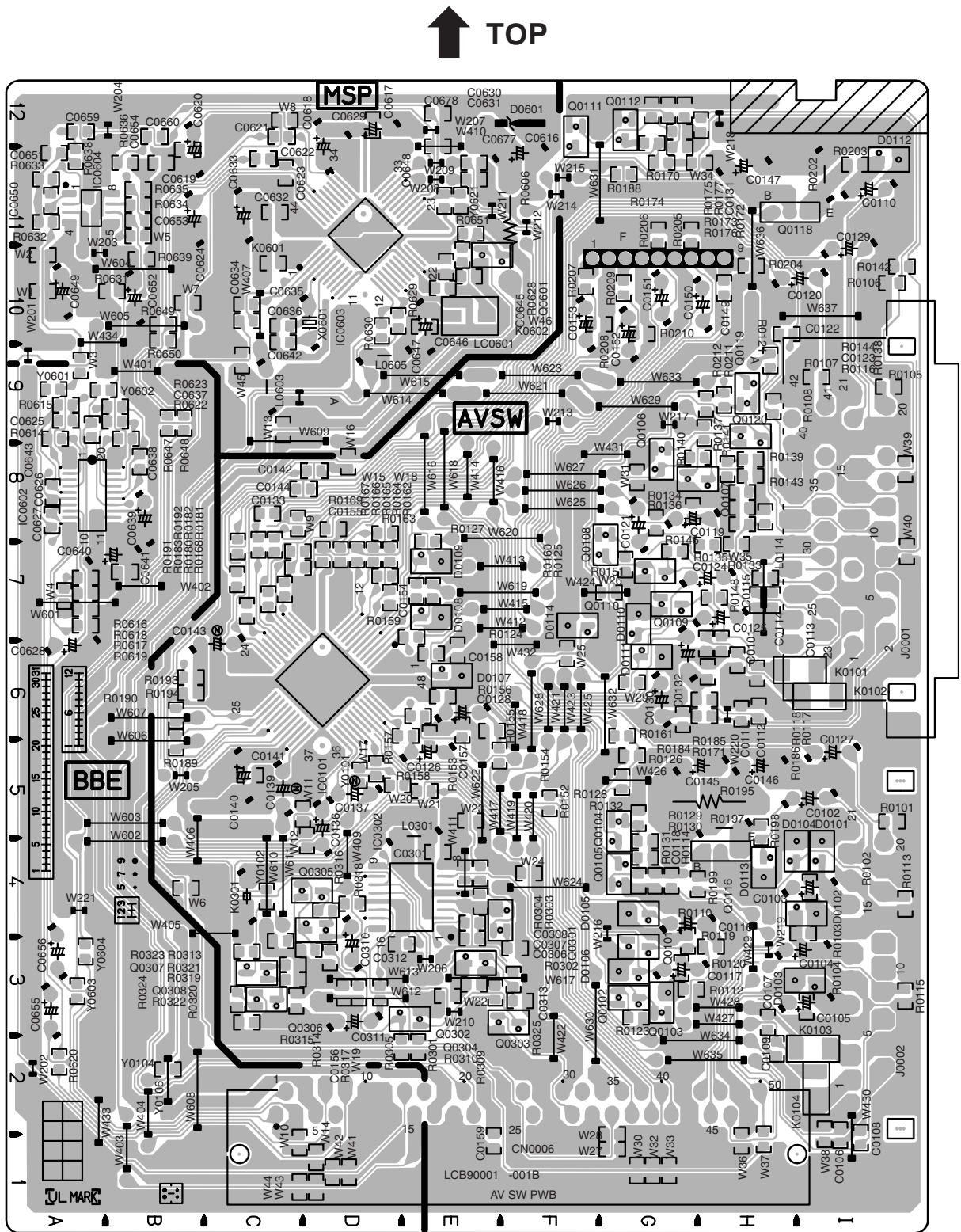
2-21

2-22

No.51941

TP-91(B1)

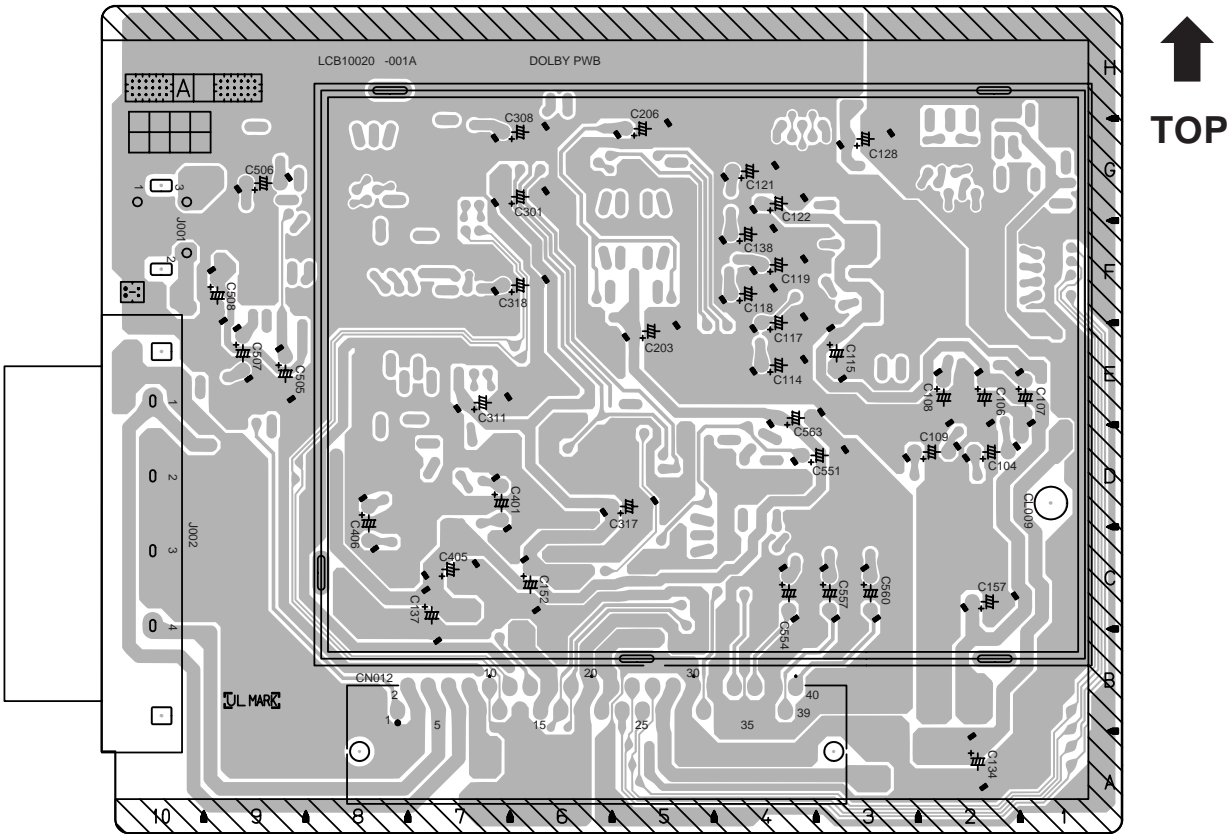
AV SW PWB PATTERN



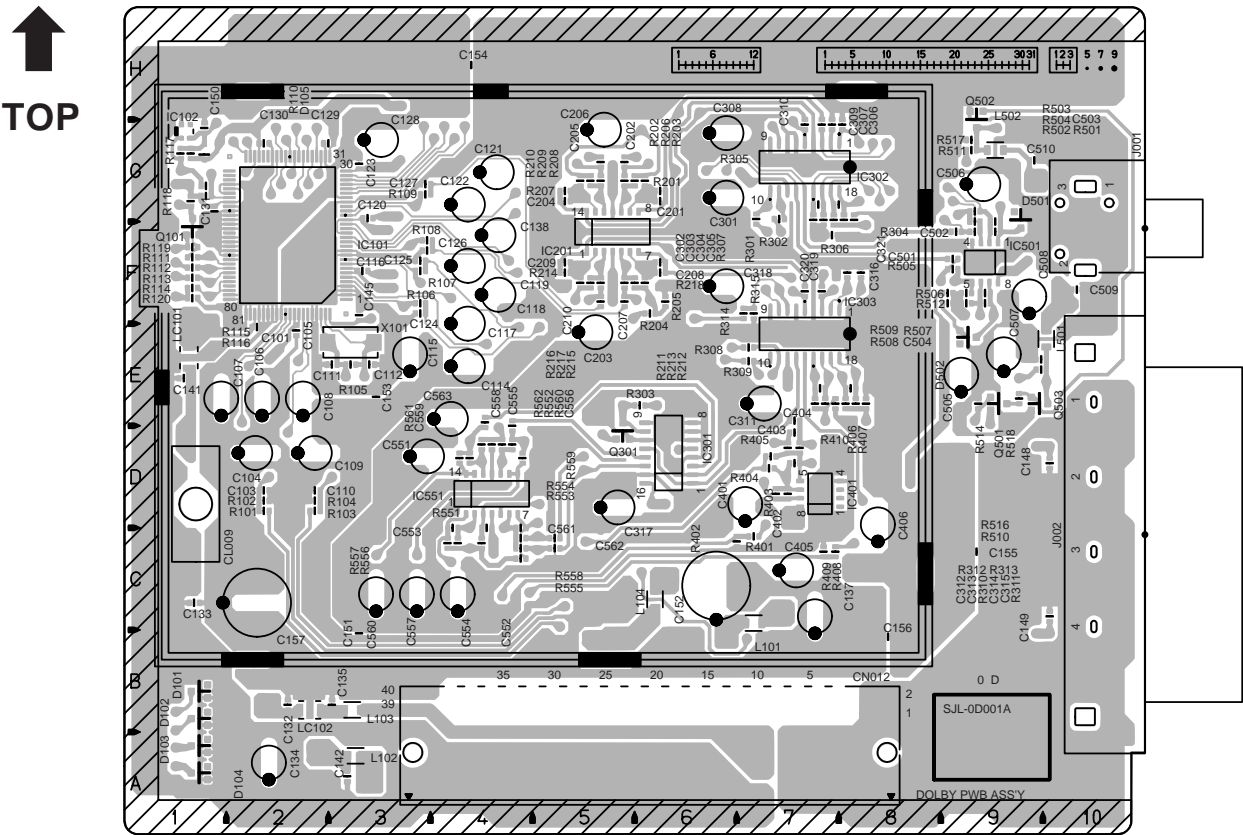
AV28R25EKS
AV28R250EKS

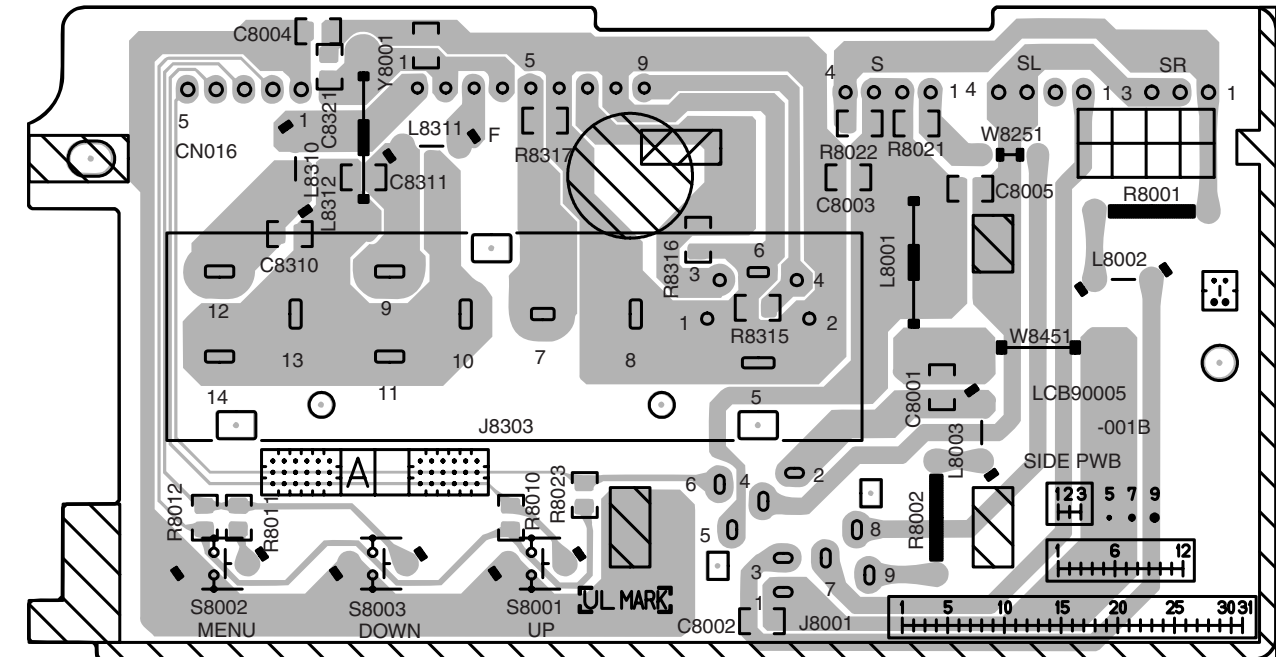
AV28R25EKS
AV28R250EKS

DOLBY PWB PATTERN (SOLDER SIDE)

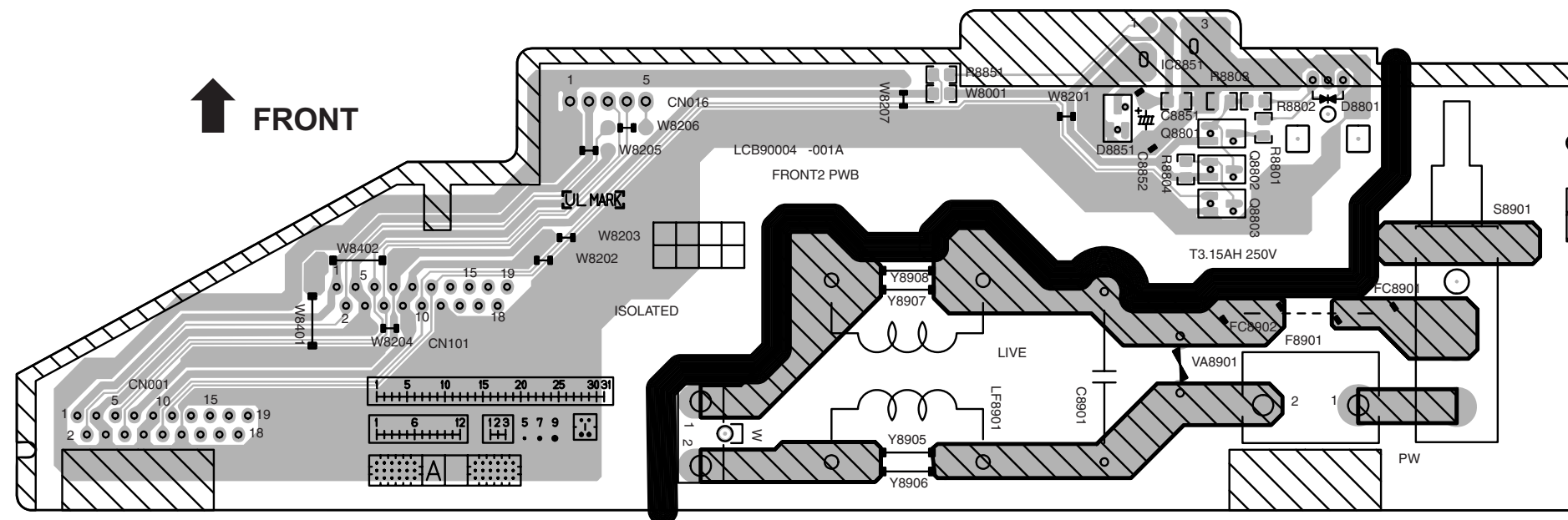


DOLBY PWB PATTERN (PARTS SIDE)





FRONT CONTROL PWB PATTERN





VICTOR COMPANY OF JAPAN, LIMITED

HOME AV NETWORK BUSINESS UNIT. 12, 3-chome, Moriya-cho, Kanagawa-ku, Yokohama, Kanagawa-prefecture, 221-8528, Japan



Printed in Japan
VP 0203
DP8080