

PARTS LIST

CAUTION

- The parts identified by the \triangle symbol are important for the safety. Whenever replacing these parts, be sure to use specified ones to secure the safety.
- The parts not indicated in this Parts List and those which are filled with lines — in the Parts No. columns will not be supplied.
- P. W. Board Ass'y will not be supplied, but those which are filled with the Parts No. in the Parts No. columns will be supplied.

ABBREVIATIONS OF RESISTORS, CAPACITORS AND TOLERANCES

| RESISTORS | | CAPACITORS | |
|-----------|--|-----------------|---|
| C R | Carbon Resistor | C CAP. | Ceramic Capacitor |
| F R | Fusible Resistor | E CAP. | Electrolytic Capacitor |
| P R | Plate Resistor | M CAP. | Mylar Capacitor |
| V R | Variable Resistor | HV CAP. | High Voltage Capacitor |
| HV R | High Voltage Resistor | MF CAP. | Metalized Film Capacitor |
| MF R | Metal Film Resistor | MM CAP. | Metalized Mylar Capacitor |
| MG R | Metal Glazed Resistor | MP CAP. | Metalized Polystyrol Capacitor |
| MP R | Metal Plate Resistor | PP CAP. | Polypropylene Capacitor |
| OM R | Metal Oxide Film Resistor | PS CAP. | Polystyrol Capacitor |
| CMF R | Coating Metal Film Resistor | TF CAP. | Thin Film Capacitor |
| UNF R | Non-Flammable Resistor | MPP CAP. | Metalized Polypropylene Capacitor |
| CH V R | Chip Variable Resistor | TAN. CAP. | Tantalum Capacitor |
| CH MG R | Chip Metal Glazed Resistor | CH C CAP. | Chip Ceramic Capacitor |
| COMP. R | Composition Resistor | BP E CAP. | Bi-Polar Electrolytic Capacitor |
| LPTC R | Linear Positive Temperature Coefficient Resistor | CH AL E CAP. | Chip Aluminum Electrolytic Capacitor |
| | | CH AL BP CAP. | Chip Aluminum Bi-Polar Capacitor |
| | | CH TAN. E CAP. | Chip Tantalum Electrolytic Capacitor |
| | | CH AL BP E CAP. | Chip Tantalum Bi-Polar Electrolytic Capacitor |

| TOLERANCES | | | | | | | | | |
|------------|-----|-----|------|------|------|--------------|--------------|--------------|--------------|
| F | G | J | K | M | N | R | H | Z | P |
| ±1% | ±2% | ±5% | ±10% | ±20% | ±30% | +30% -10% | +50% -10% | +80% -20% | +100% -0% |

| | |
|--|--------|
| ■ USING PW BOARD & REMOTE CONTROL UNIT | 30 |
| ■ EXPLODED VIEW PARTS LIST | 31, 32 |
| ■ EXPLODED VIEW | 31, 33 |
| ■ PRINTED WIRING BOARD PARTS LIST | |

AV28R25EKS / AV28R250EKS

| | |
|--------------------------------------|----|
| ● MAIN PW BOARD ASS'Y | 34 |
| ● POWER & DEF. PW BOARD ASS'Y | 37 |
| ● CRT SOCKET PW BOARD ASS'Y | 39 |
| ● FRONT CONTROL PW BOARD ASS'Y | 40 |
| ● SIDE CONTROL PW BOARD ASS'Y | 40 |
| ● AV SW PW BOARD ASS'Y | 41 |
| ● DOLBY PW BOARD ASS'Y | 42 |

| | |
|--|----|
| ■ REMOTE CONTROL UNIT PARTS LIST | 44 |
| ■ PACKING | 45 |
| ■ PACKING PARTS LIST | 45 |

USING PW BOARD & REMOTE CONTROL UNIT

| PWB ASS'Y \ Model | AV28R25EKS | AV28R250EKS |
|---------------------|--------------|-------------|
| MAIN PWB | SJL-1005A-U2 | ← |
| POWER & DEF. PWB | SJL-2003A-U2 | ← |
| CRT SOCKET PWB | SJL-3001A-U2 | ← |
| FRONT CONTROL PWB | SJL-8003A-U2 | ← |
| SIDE CONTROL PWB | SJL-8101A-U2 | ← |
| AV SW PWB | SJL0S003A-U2 | ← |
| DOLBY PWB | SJL0D001A-U2 | ← |
| REMOTE CONTROL UNIT | RM-C60H-1C | ← |

EXPLODED VIEW PARTS LIST (1)

△ Ref.No. Part No. Part Name Description

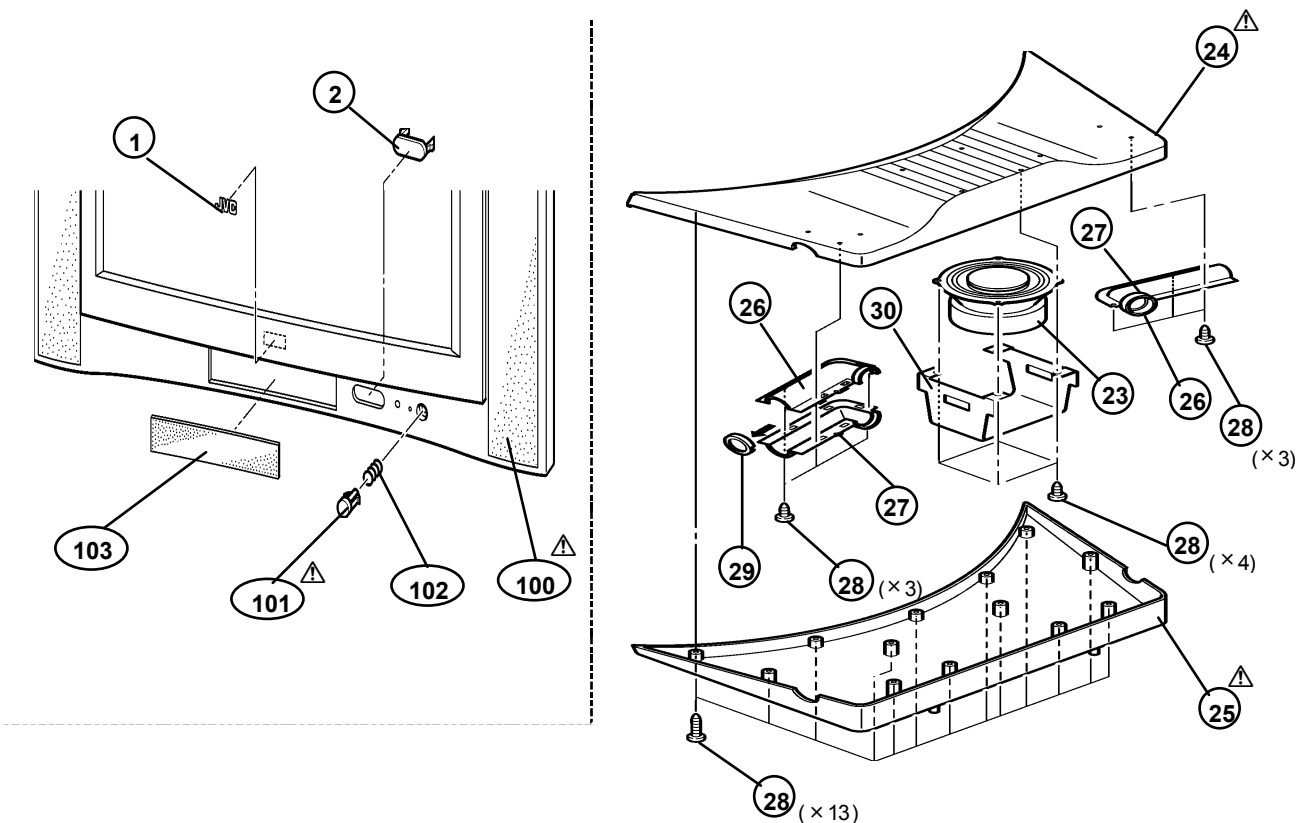
AV28R25EKS

| | | | |
|-------|----------------|------------------|----------------|
| 1 | LC41250-002B-C | JVC MARK | |
| 2 | LC31851-001B-C | WINDOW | |
| 23 | QAS0092-001 | SPEAKER | SP04 |
| △ 24 | LC11308-001B-U | SP BOX T | |
| △ 25 | LC11309-001B-U | SP BOX B | |
| 26 | GG20007-002C-H | BASS INT. DUCT L | (x 2) |
| 27 | GG20007-001C-H | BASS INT. DUCT R | (x 2) |
| 28 | QYSBSAG4016N | TAP SCREW | (x 23) |
| 29 | LC31935-001A-C | PORT SPACER | (x 2) |
| 30 | LC21100-002A-C | MAG SHIELD | |
| △ 100 | LC11313-001A-U | FRONT CABI ASSY | Inc.No.101~103 |
| △ 101 | LC31201-003A-U | POWER KNOB | (SERVICE) |
| 102 | AEM3149-001-E | SPRING | |
| 103 | LC21031-001C-U | SPEAKER PANEL | |

AV28R250EKS

| | | | |
|-------|----------------|------------------|----------------|
| 1 | LC41250-002B-C | JVC MARK | |
| 2 | LC31851-001B-C | WINDOW | |
| 23 | QAS0092-001 | SPEAKER | SP04 |
| △ 24 | LC11308-001B-U | SP BOX T | |
| △ 25 | LC11309-001B-U | SP BOX B | |
| 26 | GG20007-002C-H | BASS INT. DUCT L | (x 2) |
| 27 | GG20007-001C-H | BASS INT. DUCT R | (x 2) |
| 28 | QYSBSAG4016N | TAP SCREW | (x 23) |
| 29 | LC31935-001A-C | PORT SPACER | (x 2) |
| 30 | LC21100-002A-C | MAG SHIELD | |
| △ 100 | LC11313-001A-U | FRONT CABI ASSY | Inc.No.101~103 |
| △ 101 | LC31201-003A-U | POWER KNOB | (SERVICE) |
| 102 | AEM3149-001-E | SPRING | |
| 103 | LC21031-001C-U | SPEAKER PANEL | |

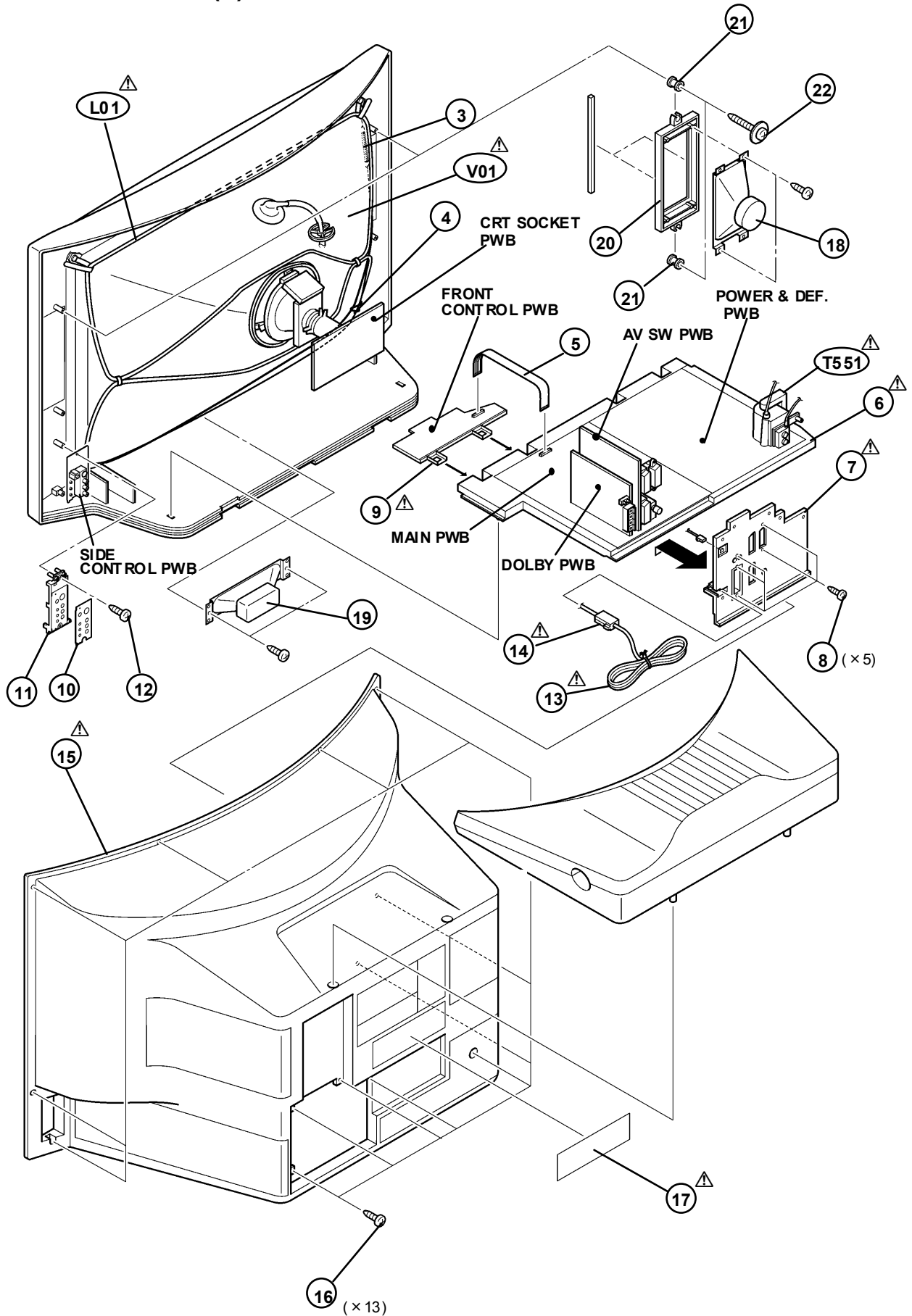
EXPLODED VIEW (1)



EXPLODED VIEW PARTS LIST (2)

| △ Ref.No. | Part No. | Part Name | Description |
|--------------------|----------------|--------------------|--------------------------|
| AV28R25EKS | | | |
| △ V01 | W66QDE993X987 | ITC | Inc.DY, PC MAGNET, WEDGE |
| △ L01 | QQW0137-001 | DEG COIL | |
| △ T551 | QQH0122-001 | FB TRANSF | |
| 3 | WJY0001-011A | E-BRAIDED ASSY | |
| 4 | WJY0013-002A | E-BRAIDED SUB ASSY | |
| 5 | CHFD119-12BD-N | FFC WIRE | CN001 |
| △ 6 | LC10716-002F-U | CHASSIS BASE | |
| △ 7 | LC11336-001B-U | AV BOARD | |
| 8 | QYSBSF3012M | TAP SCREW | (x 5) |
| △ 9 | LC11311-001B-U | CONTROL BASE | |
| 10 | LC31205-001B | CONTROL SHEET | |
| 11 | LC10856-001C-U | SIDE CONT BASE | |
| 12 | QYSBSAG4016N | TAP SCREW | |
| △ 13 | QMPN130-185-JC | POWER CORD | CN-PW |
| △ 14 | CM46618-A01-E | POWER CORD CLMP | |
| △ 15 | LC11282-001B-U | REAR COVER | |
| 16 | QYSBSAG4016N | TAP SCREW | (x 13) |
| △ 17 | LC11364-001A-U | RATING LABEL | |
| 18 | QAS0109-001 | SPEAKER | SP01-02 (x 2) |
| 19 | QAS0110-001 | SPEAKER | SP03 |
| 20 | LC11310-001A-U | SPEAKER ADAPTER | (x 2) |
| 21 | LC40226-003A-H | SPACER | (x 4) |
| 22 | LC40506-001A | TAP SCREW | (x 4) |
| AV28R250EKS | | | |
| △ V01 | W66QDE993X987 | ITC | Inc.DY, PC MAGNET, WEDGE |
| △ L01 | QQW0137-001 | DEG COIL | |
| △ T551 | QQH0122-001 | FB TRANSF | |
| 3 | WJY0001-011A | E-BRAIDED ASSY | |
| 4 | WJY0013-002A | E-BRAIDED SUB ASSY | |
| 5 | CHFD119-12BD-N | FFC WIRE | CN001 |
| △ 6 | LC10716-002F-U | CHASSIS BASE | |
| △ 7 | LC11336-001B-U | AV BOARD | |
| 8 | QYSBSF3012M | TAP SCREW | (x 5) |
| △ 9 | LC11311-001B-U | CONTROL BASE | |
| 10 | LC31205-001B | CONTROL SHEET | |
| 11 | LC10856-001C-U | SIDE CONT BASE | |
| 12 | QYSBSAG4016N | TAP SCREW | |
| △ 13 | QMPN130-185-JC | POWER CORD | CN-PW |
| △ 14 | CM46618-A01-E | POWER CORD CLMP | |
| △ 15 | LC11282-001B-U | REAR COVER | |
| 16 | QYSBSAG4016N | TAP SCREW | (x 13) |
| △ 17 | LC11364-001A-U | RATING LABEL | |
| 18 | QAS0109-001 | SPEAKER | SP01-02 (x 2) |
| 19 | QAS0110-001 | SPEAKER | SP03 |
| 20 | LC11310-001A-U | SPEAKER ADAPTER | (x 2) |
| 21 | LC40226-003A-H | SPACER | (x 4) |
| 22 | LC40506-001A | TAP SCREW | (x 4) |

EXPLODED VIEW (2)



AV28R25EKS / AV28R250EKS

PRINTED WIRING BOARD PARTS LIST

■ MAIN P.W. BOARD ASS'Y (SJL-1005A-U2)

| Symbol No. | Part No. | Part Name | Description |
|------------|--------------|-----------|---------------|
| RESISTOR | | | |
| R002 | NRSA63J-101X | MG R | 100Ω 1/16W J |
| R003 | NRSA63J-101X | MG R | 100Ω 1/16W J |
| R006 | NRSA63J-472X | MG R | 4.7kΩ 1/16W J |
| R007 | NRSA63J-103X | MG R | 10kΩ 1/16W J |
| R008 | NRSA63J-103X | MG R | 10kΩ 1/16W J |
| R011 | NRSA63J-102X | MG R | 1kΩ 1/16W J |
| R304 | QRG01GJ-121 | OM R | 120Ω 1W J |
| R305 | NRSA63J-562X | MG R | 5.6kΩ 1/16W J |
| R306 | NRSA63J-222X | MG R | 2.2kΩ 1/16W J |
| R307 | NRSA63J-102X | MG R | 1kΩ 1/16W J |
| R308 | NRSA63J-471X | MG R | 470Ω 1/16W J |
| R309 | NRSA63J-222X | MG R | 2.2kΩ 1/16W J |
| R310 | NRSA63J-391X | MG R | 390Ω 1/16W J |
| R311 | NRSA63J-391X | MG R | 390Ω 1/16W J |
| R312 | NRSA63J-101X | MG R | 100Ω 1/16W J |
| R313 | NRSA63J-101X | MG R | 100Ω 1/16W J |
| R314 | NRSA63J-562X | MG R | 5.6kΩ 1/16W J |
| R316 | NRSA63J-224X | MG R | 220kΩ 1/16W J |
| R317 | NRSA63J-101X | MG R | 100Ω 1/16W J |
| R321 | NRSA63J-102X | MG R | 1kΩ 1/16W J |
| R327 | NRSA63J-471X | MG R | 470Ω 1/16W J |
| R330 | NRSA63J-472X | MG R | 4.7kΩ 1/16W J |
| R331 | NRSA63J-152X | MG R | 1.5kΩ 1/16W J |
| R332 | NRSA63J-332X | MG R | 3.3kΩ 1/16W J |
| R333 | NRSA63J-472X | MG R | 4.7kΩ 1/16W J |
| R335 | NRSA63J-273X | MG R | 27kΩ 1/16W J |
| R336 | NRSA63J-103X | MG R | 10kΩ 1/16W J |
| R337 | NRSA63J-102X | MG R | 1kΩ 1/16W J |
| R340 | NRSA63J-103X | MG R | 10kΩ 1/16W J |
| R341 | NRSA63J-103X | MG R | 10kΩ 1/16W J |
| R342 | NRSA63J-152X | MG R | 1.5kΩ 1/16W J |
| R344 | NRSA63J-102X | MG R | 1kΩ 1/16W J |
| R345 | NRSA63J-562X | MG R | 5.6kΩ 1/16W J |
| R346 | NRSA63J-333X | MG R | 33kΩ 1/16W J |
| R401 | NRSA63J-103X | MG R | 10kΩ 1/16W J |
| R402 | NRSA63J-103X | MG R | 10kΩ 1/16W J |
| R403 | NRSA63J-102X | MG R | 1kΩ 1/16W J |
| R404 | NRSA63J-183X | MG R | 18kΩ 1/16W J |
| R405 | NRSA63J-223X | MG R | 22kΩ 1/16W J |
| R409 | NRSA63J-0R0X | MG R | 0.0Ω 1/16W J |
| R411 | NRSA63D-473X | MG R | 47kΩ 1/16W D |
| R413 | NRSA63D-223X | MG R | 22kΩ 1/16W D |
| R414 | NRSA63D-101X | MG R | 100Ω 1/16W D |
| R415 | NRSA63J-562X | MG R | 5.6kΩ 1/16W J |
| R416 | NRSA63J-101X | MG R | 100Ω 1/16W J |
| R417 | NRSA63J-223X | MG R | 22kΩ 1/16W J |
| R418 | NRSA63J-682X | MG R | 6.8kΩ 1/16W J |
| R419 | NRSA63J-562X | MG R | 5.6kΩ 1/16W J |
| R420 | NRSA63J-183X | MG R | 18kΩ 1/16W J |
| R502 | NRSA63J-103X | MG R | 10kΩ 1/16W J |
| R503 | NRSA63J-104X | MG R | 100kΩ 1/16W J |
| R504 | NRSA63J-822X | MG R | 8.2kΩ 1/16W J |
| R505 | NRSA63J-221X | MG R | 220Ω 1/16W J |
| R506 | NRSA63J-221X | MG R | 220Ω 1/16W J |
| R507 | NRSA63J-102X | MG R | 1kΩ 1/16W J |
| R508 | NRSA63J-223X | MG R | 22kΩ 1/16W J |
| R509 | NRSA63J-223X | MG R | 22kΩ 1/16W J |
| R511 | NRSA63J-0R0X | MG R | 0.0Ω 1/16W J |
| R514 | NRSA63J-472X | MG R | 4.7kΩ 1/16W J |
| R516 | NRSA63J-222X | MG R | 2.2kΩ 1/16W J |
| R517 | NRSA63J-472X | MG R | 4.7kΩ 1/16W J |
| R518 | NRSA63J-682X | MG R | 6.8kΩ 1/16W J |
| R519 | NRSA63J-562X | MG R | 5.6kΩ 1/16W J |
| R520 | NRSA63J-152X | MG R | 1.5kΩ 1/16W J |
| R551 | QRK126J-100X | C R | 10Ω 1/2W J |

| Symbol No. | Part No. | Part Name | Description |
|------------|--------------|-----------|---------------|
| RESISTOR | | | |
| R552 | NRSA63J-124X | MG R | 120kΩ 1/16W J |
| R553 | NRSA63J-683X | MG R | 68kΩ 1/16W J |
| R554 | NRSA63J-333X | MG R | 33kΩ 1/16W J |
| R555 | NRSA63J-472X | MG R | 4.7kΩ 1/16W J |
| R556 | NRSA63J-154X | MG R | 150kΩ 1/16W J |
| R557 | NRSA63J-562X | MG R | 5.6kΩ 1/16W J |
| R558 | NRSA63J-562X | MG R | 5.6kΩ 1/16W J |
| R560 | NRSA63J-104X | MG R | 100kΩ 1/16W J |
| R561 | QRE121J-100Y | C R | 10Ω 1/2W J |
| R571 | NRSA63J-101X | MG R | 100Ω 1/16W J |
| R572 | NRSA63J-223X | MG R | 22kΩ 1/16W J |
| R573 | NRSA63J-821X | MG R | 82Ω 1/16W J |
| R574 | NRSA63J-333X | MG R | 33kΩ 1/16W J |
| R601 | NRSA63J-0R0X | MG R | 0.0Ω 1/16W J |
| R603 | NRSA63J-0R0X | MG R | 0.0Ω 1/16W J |
| R605 | NRSA63J-0R0X | MG R | 0.0Ω 1/16W J |
| R607 | NRSA63J-103X | MG R | 10kΩ 1/16W J |
| R608 | NRSA63J-103X | MG R | 10kΩ 1/16W J |
| R609 | NRSA63J-103X | MG R | 10kΩ 1/16W J |
| R613 | NRSA63J-104X | MG R | 100kΩ 1/16W J |
| R617 | NRSA63J-103X | MG R | 10kΩ 1/16W J |
| R618 | NRSA63J-822X | MG R | 8.2kΩ 1/16W J |
| R619 | NRSA63J-473X | MG R | 47kΩ 1/16W J |
| R620 | NRSA63J-153X | MG R | 15kΩ 1/16W J |
| R621 | NRSA63J-222X | MG R | 2.2kΩ 1/16W J |
| R622 | NRSA63J-822X | MG R | 8.2kΩ 1/16W J |
| R623 | NRSA63J-103X | MG R | 10kΩ 1/16W J |
| R624 | NRSA63J-473X | MG R | 47kΩ 1/16W J |
| R625 | NRSA63J-682X | MG R | 6.8kΩ 1/16W J |
| R626 | NRSA63J-104X | MG R | 100kΩ 1/16W J |
| R627 | NRSA63J-272X | MG R | 2.7kΩ 1/16W J |
| R628 | NRSA63J-104X | MG R | 100kΩ 1/16W J |
| R629 | NRSA63J-682X | MG R | 6.8kΩ 1/16W J |
| R630 | NRSA63J-104X | MG R | 100kΩ 1/16W J |
| R631 | NRSA63J-103X | MG R | 10kΩ 1/16W J |
| R632 | NRSA63J-103X | MG R | 10kΩ 1/16W J |
| R633 | NRSA63J-103X | MG R | 10kΩ 1/16W J |
| R637 | NRSA63J-104X | MG R | 100kΩ 1/16W J |
| R638 | NRSA63J-103X | MG R | 10kΩ 1/16W J |
| R639 | NRSA63J-473X | MG R | 47kΩ 1/16W J |
| R640 | NRSA63J-822X | MG R | 8.2kΩ 1/16W J |
| R641 | NRSA63J-103X | MG R | 10kΩ 1/16W J |
| R642 | NRSA63J-473X | MG R | 47kΩ 1/16W J |
| R643 | NRSA63J-822X | MG R | 8.2kΩ 1/16W J |
| R644 | NRSA63J-153X | MG R | 15kΩ 1/16W J |
| R645 | NRSA63J-222X | MG R | 2.2kΩ 1/16W J |
| R646 | NRSA63J-273X | MG R | 27kΩ 1/16W J |
| R647 | NRSA63J-473X | MG R | 47kΩ 1/16W J |
| R648 | NRSA63J-103X | MG R | 10kΩ 1/16W J |
| R702 | NRSA63J-472X | MG R | 4.7kΩ 1/16W J |
| R704 | NRSA63J-472X | MG R | 4.7kΩ 1/16W J |
| R705 | NRSA63J-103X | MG R | 10kΩ 1/16W J |
| R707 | NRSA63J-103X | MG R | 10kΩ 1/16W J |
| R708 | NRSA63J-103X | MG R | 10kΩ 1/16W J |
| R709 | NRSA63J-103X | MG R | 10kΩ 1/16W J |
| R710 | NRSA63J-103X | MG R | 10kΩ 1/16W J |
| R712 | NRSA63J-103X | MG R | 10kΩ 1/16W J |
| R713 | NRSA63J-103X | MG R | 10kΩ 1/16W J |
| R714 | NRSA63J-101X | MG R | 100Ω 1/16W J |
| R715 | NRSA63J-101X | MG R | 100Ω 1/16W J |
| R716 | NRSA63J-101X | MG R | 100Ω 1/16W J |
| R717 | NRSA63J-101X | MG R | 100Ω 1/16W J |
| R718 | NRSA63J-472X | MG R | 4.7kΩ 1/16W J |
| R719 | NRSA63J-472X | MG R | 4.7kΩ 1/16W J |
| R720 | NRSA63J-472X | MG R | 4.7kΩ 1/16W J |

△ Symbol No. Part No. Part Name Description

RESISTOR

| | | | |
|------|--------------|------|---------------|
| R721 | NRSA63J-221X | MG R | 220Ω 1/16W J |
| R722 | NRSA63J-221X | MG R | 220Ω 1/16W J |
| R723 | NRSA63J-221X | MG R | 220Ω 1/16W J |
| R724 | NRSA63J-221X | MG R | 220Ω 1/16W J |
| R725 | NRSA63J-221X | MG R | 220Ω 1/16W J |
| R726 | NRSA63J-683X | MG R | 68kΩ 1/16W J |
| R728 | NRSA63J-101X | MG R | 100Ω 1/16W J |
| R729 | NRSA63J-101X | MG R | 100Ω 1/16W J |
| R730 | NRSA63J-183X | MG R | 18kΩ 1/16W J |
| R731 | NRSA63J-183X | MG R | 18kΩ 1/16W J |
| R732 | NRSA63J-472X | MG R | 4.7kΩ 1/16W J |
| R733 | NRSA63J-472X | MG R | 4.7kΩ 1/16W J |
| R734 | NRSA63J-472X | MG R | 4.7kΩ 1/16W J |
| R735 | NRSA63J-223X | MG R | 22kΩ 1/16W J |
| R736 | NRSA63J-223X | MG R | 22kΩ 1/16W J |
| R737 | NRSA63J-103X | MG R | 10kΩ 1/16W J |
| R738 | NRSA63J-103X | MG R | 10kΩ 1/16W J |
| R739 | NRSA63J-473X | MG R | 47kΩ 1/16W J |
| R740 | NRSA63J-332X | MG R | 3.3kΩ 1/16W J |
| R741 | NRSA63J-101X | MG R | 100Ω 1/16W J |
| R742 | NRSA63J-223X | MG R | 22kΩ 1/16W J |
| R743 | NRSA63J-391X | MG R | 390Ω 1/16W J |
| R744 | NRSA63J-471X | MG R | 470Ω 1/16W J |
| R745 | NRSA63J-182X | MG R | 1.8kΩ 1/16W J |
| R746 | NRSA63J-473X | MG R | 47kΩ 1/16W J |
| R747 | NRSA63J-682X | MG R | 6.8kΩ 1/16W J |
| R748 | NRSA63J-153X | MG R | 15kΩ 1/16W J |
| R749 | NRSA63J-223X | MG R | 22kΩ 1/16W J |
| R750 | NRSA63J-473X | MG R | 47kΩ 1/16W J |
| R751 | NRSA63J-562X | MG R | 5.6kΩ 1/16W J |
| R752 | NRSA63J-103X | MG R | 10kΩ 1/16W J |
| R753 | NRSA63J-223X | MG R | 22kΩ 1/16W J |
| R757 | NRSA63J-102X | MG R | 1kΩ 1/16W J |
| R758 | NRSA63J-0R0X | MG R | 0.0Ω 1/16W J |
| R759 | NRSA63J-0R0X | MG R | 0.0Ω 1/16W J |
| R760 | NRSA63J-0R0X | MG R | 0.0Ω 1/16W J |
| R761 | NRSA63J-473X | MG R | 47kΩ 1/16W J |
| R762 | NRSA63J-473X | MG R | 47kΩ 1/16W J |
| R763 | NRSA63J-823X | MG R | 82kΩ 1/16W J |
| R764 | NRSA63J-104X | MG R | 100kΩ 1/16W J |
| R765 | NRSA63J-10X | MG R | 10kΩ 1/16W J |
| R766 | NRSA63J-222X | MG R | 2.2kΩ 1/16W J |
| R767 | NRSA63J-103X | MG R | 10kΩ 1/16W J |
| R768 | NRSA63J-0R0X | MG R | 0.0Ω 1/16W J |
| R769 | NRSA63J-183X | MG R | 18kΩ 1/16W J |
| R771 | NRSA63J-102X | MG R | 1kΩ 1/16W J |
| R772 | NRSA63J-104X | MG R | 100kΩ 1/16W J |
| R773 | NRSA63J-221X | MG R | 220Ω 1/16W J |
| R774 | NRSA63J-473X | MG R | 47kΩ 1/16W J |
| R775 | NRSA63J-102X | MG R | 1kΩ 1/16W J |
| R776 | NRSA63J-473X | MG R | 47kΩ 1/16W J |
| R777 | NRSA63J-102X | MG R | 1kΩ 1/16W J |
| R778 | NRSA63J-152X | MG R | 1.5kΩ 1/16W J |
| R779 | NRSA63J-273X | MG R | 27kΩ 1/16W J |
| R780 | NRSA63J-103X | MG R | 10kΩ 1/16W J |
| R781 | NRSA63J-103X | MG R | 10kΩ 1/16W J |
| R782 | NRSA63J-103X | MG R | 10kΩ 1/16W J |
| R783 | NRSA63J-103X | MG R | 10kΩ 1/16W J |
| R784 | NRSA63J-333X | MG R | 33kΩ 1/16W J |
| R785 | NRSA63J-184X | MG R | 180kΩ 1/16W J |
| R787 | NRSA63J-333X | MG R | 33kΩ 1/16W J |
| R788 | NRSA63J-332X | MG R | 3.3kΩ 1/16W J |
| R789 | NRSA63J-103X | MG R | 10kΩ 1/16W J |
| R790 | NRSA63J-102X | MG R | 1kΩ 1/16W J |
| R791 | NRSA63J-152X | MG R | 1.5kΩ 1/16W J |
| R792 | NRSA63J-103X | MG R | 10kΩ 1/16W J |
| R793 | NRSA63J-102X | MG R | 1kΩ 1/16W J |

CAPACITOR

| | | | |
|------|--------------|--------|--------------|
| C001 | NCB31HK-222X | C CAP. | 2200pF 50V K |
| C002 | QETNLM-106Z | E CAP. | 10μF 50V M |

△ Symbol No. Part No. Part Name Description

CAPACITOR

| | | | |
|------|--------------|---------|---------------|
| C004 | NCB31CK-104X | C CAP. | 0.1μF 16V K |
| C005 | QETNLM-108Z | E CAP. | 1000μF 16V M |
| C006 | NCB31HK-103X | C CAP. | 0.01μF 50V K |
| C007 | QETNLM-106Z | E CAP. | 10μF 50V M |
| C008 | NCB31CK-104X | C CAP. | 0.1μF 16V K |
| C009 | QETNLM-106Z | E CAP. | 10μF 50V M |
| C011 | QETNLM-106Z | E CAP. | 10μF 50V M |
| C012 | NCB31HK-103X | C CAP. | 0.01μF 50V K |
| C013 | NCB31HK-103X | C CAP. | 0.01μF 50V K |
| C301 | NCB31CK-104X | C CAP. | 0.1μF 16V K |
| C302 | NCB31CK-683X | C CAP. | 0.68μF 16V K |
| C304 | NCB31HK-103X | C CAP. | 0.01μF 50V K |
| C305 | QETNLM-107Z | E CAP. | 100μF 16V M |
| C303 | QETNLM-476Z | E CAP. | 47μF 25V M |
| C306 | NCB31HK-103X | C CAP. | 0.01μF 50V K |
| C307 | QETNLM-477Z | E CAP. | 470μF 16V M |
| C308 | NDC31HJ-120X | C CAP. | 120F 50V J |
| C309 | QETNLM-475Z | E CAP. | 4.7μF 50V M |
| C310 | NCB31HK-103X | C CAP. | 0.01μF 50V K |
| C311 | QETNLM-106Z | E CAP. | 10μF 50V M |
| C312 | NDC31HJ-680X | C CAP. | 680F 50V J |
| C313 | QETNLM-107Z | E CAP. | 100μF 16V M |
| C314 | NCB31HK-103X | C CAP. | 0.01μF 50V K |
| C315 | QETNLM-106Z | E CAP. | 10μF 50V M |
| C319 | QETNLM-107Z | E CAP. | 100μF 16V M |
| C320 | NCB31HK-103X | C CAP. | 0.01μF 50V K |
| C321 | NCB31CK-104X | C CAP. | 0.1μF 16V K |
| C322 | NCB31CK-104X | C CAP. | 0.1μF 16V K |
| C323 | NCB31CK-104X | C CAP. | 0.1μF 16V K |
| C324 | QETNLM-105Z | E CAP. | 1.0μF 50V M |
| C325 | QETNLM-105Z | E CAP. | 1.0μF 50V M |
| C326 | QETNLM-105Z | E CAP. | 1.0μF 50V M |
| C327 | QETNLM-475Z | E CAP. | 4.7μF 50V M |
| C328 | QETNLM-476Z | E CAP. | 47μF 25V M |
| C329 | NDC31HJ-390X | C CAP. | 390F 50V J |
| C330 | NDC31HJ-390X | C CAP. | 390F 50V J |
| C331 | QETNLM-105Z | E CAP. | 1.0μF 50V M |
| C332 | NCB31HK-103X | C CAP. | 0.01μF 50V K |
| C333 | NCB21EK-104X | C CAP. | 0.1μF 25V K |
| C334 | QETNLM-106Z | E CAP. | 10μF 50V M |
| C401 | QETNLM-105Z | E CAP. | 1.0μF 50V M |
| C403 | NCB31HK-103X | C CAP. | 0.01μF 50V K |
| C404 | NCB31HK-103X | C CAP. | 0.01μF 50V K |
| C405 | NCB31HK-103X | C CAP. | 0.01μF 50V K |
| C406 | QFVFLHJ-184Z | MF CAP. | 0.18μF 50V J |
| C407 | QFVFLHJ-824Z | MF CAP. | 0.82μF 50V J |
| C408 | NCB31HK-153X | C CAP. | 0.015μF 50V K |
| C501 | QETNLM-107Z | E CAP. | 100μF 16V M |
| C502 | NCB31HK-103X | C CAP. | 0.01μF 50V K |
| C503 | NCB31HK-103X | C CAP. | 0.01μF 50V K |
| C504 | NCB31HK-103X | C CAP. | 0.01μF 50V K |
| C505 | NCB31HK-332X | C CAP. | 3300pF 50V K |
| C506 | QETNLM-335Z | E CAP. | 3.3μF 50V M |
| C507 | NCB31HK-103X | C CAP. | 0.01μF 50V K |
| C508 | QETNLM-108Z | E CAP. | 1000μF 16V M |
| C509 | QFLCLHJ-823Z | M CAP. | 0.082μF 50V J |
| C510 | NCB31HK-103X | C CAP. | 0.01μF 50V K |
| C511 | NCB31HK-103X | C CAP. | 0.01μF 50V K |
| C512 | QTMNLM-105Z | E CAP. | 1μF 50V M |
| C513 | QETNLM-228Z | E CAP. | 2200μF 16V M |
| C514 | NCB31HK-103X | C CAP. | 0.01μF 50V K |
| C515 | QFVFLHJ-394Z | MF CAP. | 0.39μF 50V J |
| C516 | NCB31HK-103X | C CAP. | 0.01μF 50V K |
| C551 | NCF31CZ-224X | C CAP. | 0.22μF 16V Z |
| C552 | NCF31CZ-224X | C CAP. | 0.22μF 16V Z |
| C553 | QETNLM-476Z | E CAP. | 47μF 25V M |
| C554 | NCF31CZ-224X | C CAP. | 0.22μF 16V Z |
| C555 | NCF31CZ-224X | C CAP. | 0.22μF 16V Z |
| C571 | NCB31HK-103X | C CAP. | 0.01μF 50V K |
| C601 | QETNLM-106Z | E CAP. | 10μF 50V M |
| C602 | QETNLM-106Z | E CAP. | 10μF 50V M |

AV28R25EKS
AV28R250EKS

| △ Symbol No. | Part No. | Part Name | Description |
|------------------|--------------|-----------|---------------|
| CAPACITOR | | | |
| C603 | QETNLM-106Z | E CAP. | 10μF 50V M |
| C604 | QETNLM-107Z | E CAP. | 100μF 50V M |
| C611 | QETNLEM-108Z | E CAP. | 1000μF 25V M |
| C612 | QETNLEM-108Z | E CAP. | 1000μF 25V M |
| C613 | QETNLEM-108Z | E CAP. | 1000μF 25V M |
| C614 | QETNLM-106Z | E CAP. | 10μF 50V M |
| C615 | QETNLM-106Z | E CAP. | 10μF 50V M |
| C616 | QETNLM-106Z | E CAP. | 10μF 50V M |
| C617 | QETNLM-106Z | E CAP. | 10μF 50V M |
| C618 | QETNLM-106Z | E CAP. | 10μF 50V M |
| C619 | QETNLM-106Z | E CAP. | 10μF 50V M |
| C620 | QETNLM-107Z | E CAP. | 100μF 50V M |
| C621 | QETMLVM-228 | E CAP. | 2200μF 35V M |
| C628 | QETNLEM-108Z | E CAP. | 1000μF 25V M |
| C629 | QETMLEM-338 | E CAP. | 3300μF 25V M |
| C630 | QETNLEM-108Z | E CAP. | 1000μF 25V M |
| C631 | QETNLM-106Z | E CAP. | 10μF 50V M |
| C632 | QETNLM-106Z | E CAP. | 10μF 50V M |
| C633 | QETNLM-106Z | E CAP. | 10μF 50V M |
| C634 | QETNLM-227Z | E CAP. | 220μF 16V M |
| C636 | QETMLVM-228 | E CAP. | 2200μF 35V M |
| C637 | QETNLM-227Z | E CAP. | 220μF 16V M |
| C675 | QETNLM-107Z | E CAP. | 100μF 16V M |
| C676 | NCB31CK-104X | C CAP. | 0.1μF 16V K |
| C677 | NCB31CK-104X | C CAP. | 0.1μF 16V K |
| C702 | NCB31HK-103X | C CAP. | 0.01μF 50V K |
| C703 | QETNLM-477Z | E CAP. | 470μF 35V M |
| C704 | NCB31CK-104X | C CAP. | 0.1μF 16V K |
| C705 | NCB31CK-104X | C CAP. | 0.1μF 16V K |
| C706 | QETNLM-227Z | E CAP. | 220μF 10V M |
| C707 | NCB31CK-104X | C CAP. | 0.1μF 16V K |
| C708 | QETNLM-107Z | E CAP. | 100μF 10V M |
| C709 | NCB31CK-104X | C CAP. | 0.1μF 16V K |
| C710 | QETNLM-107Z | E CAP. | 100μF 10V M |
| C711 | QETNLM-227Z | E CAP. | 220μF 10V M |
| C712 | QETNLM-227Z | E CAP. | 220μF 10V M |
| C713 | NCB31CK-104X | C CAP. | 0.1μF 16V K |
| C714 | NCB31CK-104X | C CAP. | 0.1μF 16V K |
| C715 | NDC31HJ-561X | C CAP. | 560pF 50V J |
| C716 | NCB31CK-104X | C CAP. | 0.1μF 16V K |
| C717 | NCB31CK-104X | C CAP. | 0.1μF 16V K |
| C718 | QENCLEM-106Z | BP E CAP. | 10μF 25V M |
| C721 | QETNLM-105Z | E CAP. | 1.0μF 50V M |
| C722 | QETNLM-106Z | E CAP. | 10μF 50V M |
| C723 | QETNLM-106Z | E CAP. | 10μF 50V M |
| C724 | QETNLM-106Z | E CAP. | 10μF 50V M |
| C725 | NCB31CK-104X | C CAP. | 0.1μF 16V K |
| C726 | NCB31CK-104X | C CAP. | 0.1μF 16V K |
| C727 | NCB31CK-104X | C CAP. | 0.1μF 16V K |
| C728 | NCB31CK-104X | C CAP. | 0.1μF 16V K |
| C729 | NCB31EK-333X | C CAP. | 0.033μF 25V K |
| C730 | NDC31HJ-151X | C CAP. | 150pF 50V J |
| C732 | NDC31HJ-330X | C CAP. | 33pF 50V J |
| C733 | NDC31HJ-390X | C CAP. | 39pF 50V J |
| C734 | NCB31CK-104X | C CAP. | 0.1μF 16V K |
| C735 | NCB31EK-333X | C CAP. | 0.033μF 25V K |
| C736 | NCB31HK-102X | C CAP. | 100pF 50V K |
| C737 | NCB31CK-104X | C CAP. | 0.1μF 16V K |
| C738 | NDC31HJ-151X | C CAP. | 150pF 50V J |
| C739 | NCF31AZ-105X | C CAP. | 1μF 10V Z |
| C740 | NDC31HJ-561X | C CAP. | 560pF 50V J |
| C741 | QETNLM-105Z | E CAP. | 1.0μF 50V M |
| C742 | QETNLM-105Z | E CAP. | 1.0μF 50V M |
| COIL | | | |
| L001 | QQL244K-270Z | INDUCTOR | |
| L002 | QQL244K-100Z | COIL | 10μH K |
| L003 | QQL244K-100Z | COIL | 10μH K |
| L301 | QQL244K-4R7Z | COIL | 4.7μH K |
| L302 | QQL244K-4R7Z | COIL | 4.7μH K |
| L305 | QQL244K-4R7Z | COIL | 4.7μH K |
| L306 | QQL244K-330Z | COIL | 33μH K |

| △ Symbol No. | Part No. | Part Name | Description |
|-------------------|-----------------|-----------------|-------------|
| COIL | | | |
| L501 | QQL244J-151Z | INDUCTOR | |
| L701 | QQL244K-4R7Z | COIL | 4.7μH K |
| L702 | QQL244K-4R7Z | COIL | 4.7μH K |
| L703 | QQL244K-4R7Z | COIL | 4.7μH K |
| L704 | QQL244K-4R7Z | COIL | 4.7μH K |
| L705 | QQL244K-4R7Z | COIL | 4.7μH K |
| L706 | QQL244K-4R7Z | COIL | 4.7μH K |
| L707 | QQL244K-8R2Z | COIL | 8.2μH K |
| L708 | QQL244K-4R7Z | COIL | 4.7μH K |
| DIODE | | | |
| D301 | MA3061/M/-X | Z DIODE | |
| D302 | MA111-X | SI DIODE | |
| D303 | MA111-X | SI DIODE | |
| D304 | MA111-X | SI DIODE | |
| D503 | AK04-T2 | SB DIODE | |
| D601 | MA330/L/-X | Z DIODE | |
| D602 | MA330/L/-X | Z DIODE | |
| D603 | MA330/L/-X | Z DIODE | |
| D604 | MA111-X | SI DIODE | |
| D605 | MA111-X | SI DIODE | |
| D606 | MA111-X | SI DIODE | |
| D607 | MA111-X | SI DIODE | |
| D608 | MA111-X | SI DIODE | |
| D609 | MA111-X | SI DIODE | |
| D610 | MA111-X | SI DIODE | |
| D611 | MA330/L/-X | Z DIODE | |
| D612 | MA330/L/-X | Z DIODE | |
| D613 | MA330/L/-X | Z DIODE | |
| D614 | MA111-X | SI DIODE | |
| D615 | MA111-X | SI DIODE | |
| D616 | MA111-X | SI DIODE | |
| D619 | MA111-X | SI DIODE | |
| D620 | MA111-X | SI DIODE | |
| D621 | MA111-X | SI DIODE | |
| D702 | MA111-X | SI DIODE | |
| D703 | MA111-X | SI DIODE | |
| D704 | MA3068/M/-X | Z DIODE | |
| D705 | MA111-X | SI DIODE | |
| TRANSISTOR | | | |
| Q002 | 2SC2412K/QR/-X | TRANSISTOR | |
| Q301 | 2SA1037AK/QR/-X | TRANSISTOR | |
| Q302 | 2SA1037AK/QR/-X | TRANSISTOR | |
| Q308 | DTC124EKA-X | DIGI TRANSISTOR | |
| Q309 | 2SC2412K/QR/-X | TRANSISTOR | |
| Q311 | DTC124EKA-X | DIGI TRANSISTOR | |
| Q312 | 2SA1037AK/QR/-X | TRANSISTOR | |
| Q401 | DTC124EKA-X | DIGI TRANSISTOR | |
| Q402 | 2SC2412K/QR/-X | TRANSISTOR | |
| Q601 | 2SA1037AK/QR/-X | TRANSISTOR | |
| Q603 | DTC124EKA-X | DIGI TRANSISTOR | |
| Q605 | DTC144EKA-X | DIGI TRANSISTOR | |
| Q606 | 2SC2412K/QR/-X | TRANSISTOR | |
| Q607 | DTC144EKA-X | DIGI TRANSISTOR | |
| Q608 | DTC144EKA-X | DIGI TRANSISTOR | |
| Q609 | 2SC2412K/QR/-X | TRANSISTOR | |
| Q610 | DTC124EKA-X | DIGI TRANSISTOR | |
| Q611 | 2SA1037AK/QR/-X | TRANSISTOR | |
| Q612 | DTC124EKA-X | DIGI TRANSISTOR | |
| Q613 | DTC124EKA-X | DIGI TRANSISTOR | |
| Q614 | DTC124EKA-X | DIGI TRANSISTOR | |
| Q615 | DTC144EKA-X | DIGI TRANSISTOR | |
| Q616 | 2SC2412K/QR/-X | TRANSISTOR | |
| Q617 | DTC144EKA-X | DIGI TRANSISTOR | |
| Q618 | 2SC2412K/QR/-X | TRANSISTOR | |
| Q619 | DTC144EKA-X | DIGI TRANSISTOR | |
| Q620 | 2SA1037AK/QR/-X | TRANSISTOR | |
| Q701 | DTC124EKA-X | DIGI TRANSISTOR | |
| Q702 | 2SC2412K/QR/-X | TRANSISTOR | |
| Q703 | 2SC2412K/QR/-X | TRANSISTOR | |
| Q704 | 2SC2412K/QR/-X | TRANSISTOR | |
| Q705 | 2SA1037AK/QR/-X | TRANSISTOR | |
| Q706 | 2SC2412K/QR/-X | TRANSISTOR | |
| Q707 | 2SA1037AK/QR/-X | TRANSISTOR | |
| Q708 | 2SC2412K/QR/-X | TRANSISTOR | |

| Symbol No. | Part No. | Part Name | Description |
|-------------------|-----------------|---------------|-------------|
| TRANSISTOR | | | |
| Q709 | 2SC2412K/QR/-X | TRANSISTOR | |
| Q710 | 2SC2412K/QR/-X | TRANSISTOR | |
| Q711 | 2SC2412K/QR/-X | TRANSISTOR | |
| Q712 | 2SC2412K/QR/-X | TRANSISTOR | |
| Q713 | 2SA1037AK/QR/-X | TRANSISTOR | |
| IC | | | |
| IC301 | TB1227CN | IC | |
| IC302 | AN5860 | I C | |
| IC501 | AN5441SA-W | IC | |
| IC551 | LA6515 | I C | |
| IC601 | AN7585 | IC | |
| IC602 | AN7585 | IC | |
| IC671 | BA05T | IC | |
| IC701 | SDA555XFL | IC | |
| IC702 | AT24C16-28R25EK | IC | (SERVICE) |
| IC703 | JLC1562BF-X | I C | |
| IC705 | MM1478DF-X | IC | |
| IC706 | R1170H251B-X | IC | |
| OTHERS | | | |
| CN001 | QGF1220C2-19 | FFC/FPC CONNE | |
| CN003-5 | QGB1506L1-16 | B TO B CONNE | |
| CN006 | QGB1505J1-50 | B TO B CONNE | |
| CN008 | QGA2501C5-08Z | W TO B CONNE | |
| CN012 | QGB1505J1-40 | B TO B CONNE | |
| CN016 | QGA2501C5-05Z | W TO B CONNE | |
| K307 | QQR0621-002Z | FERRITE BEADS | |
| LC301 | CE42142-222Z | EMI FILTER | |
| TU001 | QAU0277-001 | TUNER | |
| X301 | QAX0305-001Z | CRYSTAL | |
| X701 | QAX0669-001Z | CRYSTAL | |
| | CEMS009-052 | IC SOCKET | |
| | CEMS007-008 | IC SOCKET | |

**POWER & DEF. P.W. BOARD ASS'Y
(SJL-2003A-U2)**

| Symbol No. | Part No. | Part Name | Description |
|-----------------|---------------|-------------|---------------|
| RESISTOR | | | |
| R401 | QRE141J-682Y | C R | 6.8kΩ 1/4W J |
| R402 | QRA14CF-6801Y | MF R | 6.8kΩ 1/4W F |
| R403 | QRA14CF-3091Y | MF R | 3.09kΩ 1/4W F |
| R404 | QRA14CF-8200Y | MF R | 82kΩ 1/4W F |
| R405 | QRA14CF-8200Y | MF R | 82kΩ 1/4W F |
| R406 | QRE141J-103Y | C R | 10kΩ 1/4W J |
| R407 | QYU153-050Y | IM BUS WIRE | |
| R409 | QRE141J-103Y | C R | 10kΩ 1/4W J |
| R410 | QRE141J-102Y | C R | 1kΩ 1/4W J |
| R414 | QRE121J-5R6Y | C R | 5.6Ω 1/2W J |
| R415 | QRX01GJ-1R8 | MF R | 1.8Ω 1W J |
| R416 | QRG01GJ-820 | OM R | 82kΩ 1W J |
| R417 | QRE121J-1R0Y | C R | 1.0Ω 1/2W J |
| R461 | QRE141J-331Y | C R | 33kΩ 1/4W J |
| R463 | QRE121J-392Y | C R | 3.9kΩ 1/2W J |
| R464 | QRE121J-562Y | C R | 5.6kΩ 1/2W J |
| R465 | QRE121J-682Y | C R | 6.8kΩ 1/2W J |
| R466 | QRE121J-102Y | C R | 1kΩ 1/2W J |
| R467 | QRL039J-330 | OM R | 33Ω 3W J |
| R468 | QYU160-100Y | IM BUS WIRE | |
| R492 | QRE141J-683Y | C R | 68kΩ 1/4W J |
| R493 | QRE141J-224Y | C R | 220kΩ 1/4W J |
| △ R494 | QRZ9017-4R7 | F R | 4.7 Ω 1/4W J |
| R495 | QRE141J-103Y | C R | 10kΩ 1/4W J |
| R496 | QRE141J-183Y | C R | 18kΩ 1/4W J |
| R497 | QRE141J-153Y | C R | 15kΩ 1/4W J |
| R501 | QRE141J-561Y | C R | 56kΩ 1/4W J |
| R502 | QRE141J-222Y | C R | 2.2kΩ 1/4W J |
| R503 | QRE121J-152Y | C R | 1.5kΩ 1/2W J |
| R504 | QRL039J-332 | OM R | 3.3kΩ 3W J |
| R505 | QRL039J-332 | OM R | 3.3kΩ 3W J |
| R521 | QRE121J-150Y | C R | 15Ω 1/2W J |
| R522 | QRL039J-103 | OM R | 10kΩ 3W J |
| R523 | QRE121J-471Y | C R | 47kΩ 1/2W J |
| △ R524 | QRZ9017-4R7 | F R | 4.7 Ω 1/4W J |
| R525 | QRE141J-152Y | C R | 1.5kΩ 1/4W J |
| R541 | QRE121J-103Y | C R | 10kΩ 1/2W J |
| R542 | QRE121J-222Y | C R | 2.2kΩ 1/2W J |
| R543 | QRE121J-124Y | C R | 120kΩ 1/2W J |
| R544 | QRE121J-104Y | C R | 100kΩ 1/2W J |
| R545 | QRE141J-123Y | C R | 12kΩ 1/4W J |
| R546 | QRE121J-104Y | C R | 100kΩ 1/2W J |
| R547 | QRE141J-123Y | C R | 12kΩ 1/4W J |
| R548 | QRE121J-222Y | C R | 2.2kΩ 1/2W J |
| R551 | QRT039J-3R3 | MF R | 3.3Ω 3W J |
| R552 | QRT039J-3R3 | MF R | 3.3Ω 3W J |
| R553 | QRF104K-5R6 | UNF R | 5.6Ω 10W K |
| R554 | QRZ9022-R47 | F R | 0.47 Ω 1W K |
| △ R555 | QRZ9011-4R7 | F R | 4.7 Ω 1/2W J |
| R591 | QRE121J-123Y | C R | 12kΩ 1/2W J |
| R592 | QRA14CF-1201Y | MF R | 1.2kΩ 1/4W F |
| R593 | QRE141J-183Y | C R | 18kΩ 1/4W J |
| R594 | QRE141J-222Y | C R | 2.2kΩ 1/4W J |
| △ R595 | QRA14CF-1962Y | MF R | 19.6kΩ 1/4W F |
| △ R596 | QRA14CF-2671Y | MF R | 2.67kΩ 1/4W F |
| R597 | QRE141J-273Y | C R | 27kΩ 1/4W J |
| R902 | QRE121J-331Y | C R | 33kΩ 1/2W J |
| R903 | QRF104K-3R9 | UNF R | 3.9Ω 10W K |
| R904 | QRE121J-474Y | C R | 470kΩ 1/2W J |
| R905 | QRE121J-474Y | C R | 470kΩ 1/2W J |
| R906 | QYU153-050Y | IM BUS WIRE | |
| R907 | QRL039J-823 | OM R | 82kΩ 3W J |
| R908 | QRL039J-823 | OM R | 82kΩ 3W J |
| R909 | QRG039J-473 | OM R | 47kΩ 3W J |
| R911 | QRM059J-R10 | MP R | 0.10Ω 5W J |
| R912 | QRT029J-R82 | MF R | 0.82Ω 2W J |
| △ R913 | QRZ9017-100 | F R | 10 Ω 1/4W K |
| R914 | QRE121J-272Y | C R | 2.7kΩ 1/2W J |
| R916 | QRE141J-103Y | C R | 10kΩ 1/4W J |
| R917 | QRE121J-221Y | C R | 22kΩ 1/2W J |
| R918 | QRE121J-102Y | C R | 1kΩ 1/2W J |
| R932 | QYU153-050Y | IM BUS WIRE | |
| R934 | QRE141J-102Y | C R | 1kΩ 1/4W J |
| R935 | QRE141J-223Y | C R | 22kΩ 1/4W J |

AV28R25EKS
AV28R250EKS

| △ Symbol No. | Part No. | Part Name | Description |
|-----------------|--------------|-----------|--------------|
| RESISTOR | | | |
| R936 | QRE141J-103Y | C R | 10kΩ 1/4W J |
| △ R939 | QRE141J-1R0Y | C R | 1.0Ω 1/4W J |
| R941 | QRE141J-102Y | C R | 1kΩ 1/4W J |
| R952 | QRE141J-222Y | C R | 2.2kΩ 1/4W J |
| R964 | QRE121J-222Y | C R | 2.2kΩ 1/2W J |
| R967 | QRL09J-223 | OM R | 22kΩ 3W J |
| R976 | QRL09J-100 | OM R | 10Ω 2W J |
| △ R991 | QRZ0057-825 | C R | 8.2MΩ 1W J |

| | | | |
|------------------|--------------|----------|--------------------|
| CAPACITOR | | | |
| C401 | QEHRLVM-227Z | E CAP. | 220μF 50V M |
| C402 | QETMLVM-108 | E CAP. | 1000μF 35V M |
| C403 | QFLC2AJ-683Z | M CAP. | 0.068μF 100V J |
| C404 | QETNLMH-105Z | E CAP. | 1.0μF 50V M |
| C405 | QFLCLHJ-472Z | M CAP. | 4700pF 50V J |
| C406 | QCZ0337-180Z | C CAP. | 18pF 2kW K |
| C407 | QFLCLHJ-102Z | M CAP. | 1000pF 50V J |
| C408 | QFVFLHJ-334Z | MF CAP. | 0.33μF 50V J |
| C410 | QFVFLHJ-334Z | MF CAP. | 0.33μF 50V J |
| C411 | QFLC2AJ-563Z | M CAP. | 0.056μF 100V J |
| C451 | QFVFLHJ-104Z | MF CAP. | 0.1μF 50V J |
| C461 | QEZ0195-475Z | E CAP. | 4.7μF 50V M |
| C462 | QETNLMH-106Z | E CAP. | 10μF 50V M |
| C463 | QFLCLHJ-153Z | M CAP. | 0.015μF 50V J |
| C464 | QFLCLHJ-333Z | M CAP. | 0.033μF 50V J |
| C491 | QETNLMH-105Z | E CAP. | 1.0μF 50V M |
| C492 | QETNLMH-106Z | E CAP. | 10μF 50V M |
| C502 | QCB32HK-681Z | C CAP. | 680pF 500V K |
| C503 | QEHRLCM-105Z | E CAP. | 1.0μF 160V M |
| C521 | QFZ0200-282 | MPP CAP. | 2800pF 1.5kVH ±3% |
| △ C522 | QFZ0200-113 | MPP CAP. | 0.011μF 1.5kVH ±3% |
| △ C523 | QFP32GJ-183 | PP CAP. | 0.018μF 400V J |
| C524 | QFM72DK-563 | M CAP. | 0.056μF 200V K |
| △ C526 | QFZ0199-304 | MPP CAP. | 0.3μF 250V J |
| C527 | QEHRLCM-475Z | E CAP. | 4.7μF 250V M |
| C529 | QFZ0197-473 | MPP CAP. | 0.047μF 250V J |
| C530 | QCB32HK-561Z | C CAP. | 560pF 500V K |
| C531 | QFLCLHJ-103Z | M CAP. | 0.01μF 50V J |
| C533 | QCS32HJ-560Z | C CAP. | 56pF 500V J |
| C542 | QFZ0197-204 | MPP CAP. | 0.2μF 250V J |
| C543 | QFZ0197-184 | MPP CAP. | 0.18μF 250V J |
| C551 | QETNLEM-106Z | E CAP. | 4.7μF 250V M |
| C552 | QCB32HK-152Z | C CAP. | 1500pF 500V K |
| C553 | QEHRLCM-108Z | E CAP. | 1000μF 25V M |
| C554 | QCB32HK-152Z | C CAP. | 1500pF 500V K |
| C555 | QEHRLCM-108Z | E CAP. | 1000μF 25V M |
| C560 | QETNLMH-227 | E CAP. | 220μF 160V M |
| C591 | QETNLMH-107Z | E CAP. | 100μF 10V M |
| C592 | QETNLEM-476Z | E CAP. | 47μF 25V M |
| C593 | QETNLMH-106Z | E CAP. | 10μF 100V M |
| C594 | QETNLMH-227Z | E CAP. | 220μF 10V M |
| △ C901 | QFZ9075-473 | MPP CAP. | 0.047μF FAC275V M |
| △ C904 | QCZ9054-472 | C CAP. | 4700pF FAC250V Z |
| △ C905 | QCZ9054-472 | C CAP. | 4700pF FAC250V Z |
| △ C906 | QCZ9054-472 | C CAP. | 4700pF FAC250V Z |
| C907 | QEZ0199-227 | E CAP. | 220μF 400V M |
| C908 | QCB32HK-103 | C CAP. | 0.01μF 500V K |
| C909 | QCZ0122-391 | C CAP. | 390pF 2kV K |
| C910 | QCZ0122-681 | C CAP. | 680pF 2kV K |
| C912 | QCB31HK-102Z | C CAP. | 1000pF 50V K |
| C916 | QETNLMH-476Z | E CAP. | 47μF 50V M |
| C917 | QETNLMH-475Z | E CAP. | 4.7μF 50V M |
| C918 | QCB31HK-152Z | C CAP. | 1500pF 50V K |
| C920 | QFVFLHJ-334Z | MF CAP. | 0.033μF 50V J |
| C933 | QETMLVM-338 | E CAP. | 3300μF 35V M |
| C951 | QCZ0122-561 | C CAP. | 560pF 2kV K |
| C952 | QEZ0203-227 | E CAP. | 220μF 160V M |
| C953 | QCB32HK-391Z | C CAP. | 390pF 500V K |
| C954 | QTMMLCM-228 | E CAP. | 2200μF 25V M |
| C955 | QCB32HK-391Z | C CAP. | 390pF 500V K |
| C956 | QTMMLCM-228 | E CAP. | 2200μF 16V M |
| C958 | QCB32HK-391Z | C CAP. | 390pF 500V K |
| C959 | QETMLVM-338 | E CAP. | 3300μF 35V M |
| C960 | QCB32HK-221Z | C CAP. | 220pF 500V K |
| C961 | QETMLVM-228 | E CAP. | 2200μF 35V M |

| △ Symbol No. | Part No. | Part Name | Description |
|------------------|--------------|-----------|------------------|
| CAPACITOR | | | |
| C964 | QFVFLHJ-684Z | MF CAP. | 0.68μF 50V J |
| C968 | QCZ0120-104Z | C CAP. | 0.1μF 25V Z |
| C969 | QEHRLCM-477Z | E CAP. | 470μF 16V M |
| C970 | QEHRLCM-107Z | E CAP. | 100μF 16V M |
| C971 | QCZ0120-104Z | C CAP. | 0.1μF 25V Z |
| C972 | QETNLMH-227Z | E CAP. | 220μF 16V M |
| C973 | QETNLEM-476Z | E CAP. | 47μF 25V M |
| C974 | QCZ0120-104Z | C CAP. | 0.1μF 25V Z |
| C975 | QETNLMH-227Z | E CAP. | 220μF 10V M |
| C976 | QETNLEM-476Z | E CAP. | 47μF 25V M |
| △ C991 | QCZ9079-332 | C CAP. | 3300pF FAC250V M |
| △ C992 | QCZ9079-471 | C CAP. | 470pF FAC250V K |

| | | | |
|--------------------|-------------|-----------------|--|
| TRANSFORMER | | | |
| T501 | CE42034-002 | HOR DRIVE TRANS | |
| △ T551 | QOH0122-001 | FB TRANS | |
| △ T901 | QOS0144-001 | SW TRANS | |

| | | | |
|-------------|--------------|----------------|--------|
| COIL | | | |
| L461 | QQL2027-821 | INDUCTOR | |
| L521 | QQL2028-501 | INDUCTOR | |
| L522 | QQR1106-001 | LINEARITY COIL | |
| L901 | QQL402K-100 | COIL | 10μH K |
| L902 | QQL402K-100 | COIL | |
| △ L903 | QQR1200-001 | LINEARITY COIL | 10μH K |
| L951 | QQL2026-460 | INDUCTOR | |
| L952 | QQL26AK-820Z | COIL | 82μH K |
| L953 | QQL26AM-5R6Z | INDUCTOR | |
| L954 | QQL26AM-5R6Z | INDUCTOR | |
| L955 | QQL26AK-220Z | COIL | 22μH K |

| | | | |
|--------------|----------------|--------------|--|
| DIODE | | | |
| D402 | 1N4003-T2 | SI DIODE | |
| D451 | EU2-T3 | SI DIODE | |
| D491 | 1SS133-T2 | SI DIODE | |
| D492 | MTZJ22B-T2 | Z DIODE | |
| D493 | 1SS133-T2 | SI DIODE | |
| D494 | 1SS133-T2 | SI DIODE | |
| D521 | RH3G-F1 | SI DIODE | |
| D522 | RU30A-F1 | SI DIODE | |
| D523 | EU2-T3 | SI DIODE | |
| D525 | MTZJ9.1B-T2 | Z DIODE | |
| D551 | EU2A-T3 | SI DIODE | |
| D553 | EU2-T3 | SI DIODE | |
| D554 | EU2-T3 | SI DIODE | |
| D591 | MTZJ15B-T2 | Z DIODE | |
| D592 | MTZJ7.5B-T2 | Z DIODE | |
| D593 | EU2-T3 | SI DIODE | |
| D594 | MTZJ7.5S-T2 | Z DIODE | |
| △ D901 | D35B60 | BRIDGE DIODE | |
| D902 | RG1C-LFA1 | SI DIODE | |
| D904 | AU01Z-T2 | FR DIODE | |
| D905 | AU01Z-T2 | FR DIODE | |
| D906 | MTZJ4.7A-T2 | Z DIODE | |
| D907 | MTZJ15B-T2 | Z DIODE | |
| D909 | 1SS133-T2 | SI DIODE | |
| D910 | QUY153-050Y | IM BUS WIRE | |
| D911 | MTZJ15B-T2 | Z DIODE | |
| D913 | MTZJ27B-T2 | Z DIODE | |
| D951 | RU4B-F1 | SI DIODE | |
| D953 | EU2-T3 | SI DIODE | |
| D954 | EU2-T3 | SI DIODE | |
| D955 | FMX-612S | SI DIODE | |
| D956 | FMX-612S | SI DIODE | |
| D957 | RGP10J-5025-T3 | SI DIODE | |
| D958 | 1SR35-400A-T2 | SI DIODE | |
| D961 | QUY153-050Y | IM BUS WIRE | |
| D962 | QUY153-050Y | IM BUS WIRE | |
| D963 | MTZJ3.9B-T2 | Z DIODE | |
| D964 | MTZJ33B-T2 | Z DIODE | |
| D965 | MTZJ4.3B-T2 | Z DIODE | |
| D981 | 1SS133-T2 | SI DIODE | |
| D982 | 1SS133-T2 | SI DIODE | |
| D983 | 1SS133-T2 | SI DIODE | |
| D985 | MTZJ7.5C-T2 | Z DIODE | |

| Symbol No. | Part No. | Part Name | Description |
|------------|-----------------|-----------------|-------------|
| TRANSISTOR | | | |
| Q402 | 2SC1740S/QR/-T | TRANSISTOR | H. OUT |
| Q461 | 2SD1408/OY/-LB | POW TRANSISTOR | |
| Q462 | 2SA933AS/QR/-T | TRANSISTOR | |
| Q463 | 2SA933AS/QR/-T | TRANSISTOR | |
| Q501 | BSN304-T | MOS FET | |
| Q521 | 2SD2553-LB | POW TRANSISTOR | |
| Q541 | DTC124ESA-T | DIGI TRANSISTOR | |
| Q542 | DTC124ESA-T | DIGI TRANSISTOR | |
| Q543 | IRF620 | POWER MOS FET | |
| Q544 | 2SK2459N-F54 | POWER MOS FET | |
| Q545 | 2SK2459N-F54 | POWER MOS FET | |
| Q546 | DTC124ESA-T | DIGI TRANSISTOR | |
| Q591 | 2SA949/Y/Z1-T | TRANSISTOR | |
| Q592 | DTC124ESA-T | DIGI TRANSISTOR | |
| Q593 | 2SC1740S/QR/-T | TRANSISTOR | |
| Q931 | 2SC1740S/QR/-T | TRANSISTOR | |
| Q932 | DTC124ESA-T | DIGI TRANSISTOR | |
| IC | | | |
| IC401 | LA78041 | IC | 5.0A |
| IC901 | STR-F6254/F7 | IC | |
| IC951 | SE140N | IC | |
| IC952 | BA12T | IC | |
| IC953 | BA17809T | IC | |
| IC954 | PQ05RF11 | IC | |
| OTHERS | | | |
| CN003-5 | QGB1506M1-16 | B TO B CONNE | 5.0A |
| CN009 | QGA2501C5-06Z | W TO B CONNE | |
| CP951 | QUY153-050Y | IM BUS WIRE | |
| CP952 | QUY153-050Y | IM BUS WIRE | |
| CP953 | QMF2034-5R0Z-J1 | FUSE | |
| CP954 | ICP-N75-Y | IC PROTECTOR | |
| CP955 | ICP-N5-Y | IC PROTECTOR | |
| K401 | QQR0621-002Z | FERRITE BEADS | |
| K503 | QQR0682-001Z | FERRITE BEADS | |
| K504 | QQR0682-001Z | FERRITE BEADS | |
| K901 | QQR0679-001 | FERRITE BEADS | 5.0A |
| K904 | QQR0679-001 | FERRITE BEADS | |
| K951 | QQR0872-001Y | FERRITE BEADS | |
| K952 | QQR0621-002Z | FERRITE BEADS | |
| K953 | QQR0621-002Z | FERRITE BEADS | |
| K954 | QQR0621-002Z | FERRITE BEADS | |
| K955 | QQR0621-002Z | FERRITE BEADS | |
| K956 | QQR0621-002Z | FERRITE BEADS | |
| LF902 | QQR1095-001 | LINE FILTER | |
| PC541 | PC123FY2 | IC(PHOTO COUPLE | 5.0A |
| PC542 | PC123FY2 | IC(PHOTO COUPLE | |
| PC901 | PC123FY2 | IC(PHOTO COUPLE | |
| TH901 | CEK002-003 | W POSISTOR | |

CRT SOCKET P.W. BOARD ASS'Y (SJL-3001A-U2)

| Symbol No. | Part No. | Part Name | Description |
|------------------|--------------|-----------|---------------|
| RESISTOR | | | |
| R3101 | NRS463J-101X | MG R | 100Ω 1/16W J |
| R3102 | NRS463J-101X | MG R | 100Ω 1/16W J |
| R3103 | NRS463J-101X | MG R | 100Ω 1/16W J |
| R3107 | NRS463J-392X | MG R | 3.9kΩ 1/16W J |
| R3108 | NRS463J-392X | MG R | 3.9kΩ 1/16W J |
| R3109 | NRS463J-392X | MG R | 3.9kΩ 1/16W J |
| R3110 | NRS463J-221X | MG R | 220Ω 1/16W J |
| R3111 | NRS463J-221X | MG R | 220Ω 1/16W J |
| R3112 | NRS463J-221X | MG R | 220Ω 1/16W J |
| R3113 | NRS463J-470X | MG R | 470Ω 1/16W J |
| R3114 | NRS463J-470X | MG R | 470Ω 1/16W J |
| R3115 | NRS463J-470X | MG R | 470Ω 1/16W J |
| R3116 | QRL029J-153 | OM R | 15kΩ 2W J |
| R3117 | QRL029J-153 | OM R | 15kΩ 2W J |
| R3118 | QRL029J-153 | OM R | 15kΩ 2W J |
| R3119 | QRL029J-183 | OM R | 18kΩ 2W J |
| R3120 | QRL029J-183 | OM R | 18kΩ 2W J |
| R3121 | QRL029J-183 | OM R | 18kΩ 2W J |
| R3125 | QRZ0107-102Z | C R | 1kΩ 1/2W K |
| R3126 | QRZ0107-102Z | C R | 1kΩ 1/2W K |
| R3127 | QRZ0107-102Z | C R | 1kΩ 1/2W K |
| R3130 | QRG01GJ-101 | OM R | 100Ω 1W J |
| R3135 | QRZ0107-474Z | C R | 470kΩ 1/2W K |
| R3136 | QRE121J-474Y | C R | 470kΩ 1/2W J |
| R3137 | QRZ0107-102Z | C R | 1kΩ 1/2W K |
| R3138 | QRE121J-105Y | C R | 1MΩ 1/2W J |
| R3151 | NRS463J-102X | MG R | 1kΩ 1/16W J |
| R3152 | NRS463J-472X | MG R | 4.7kΩ 1/16W J |
| R3154 | NRS463J-0R0X | MG R | 0.0Ω 1/16W J |
| R3303 | NRS463J-101X | MG R | 100Ω 1/16W J |
| R3312 | NRS463J-153X | MG R | 15kΩ 1/16W J |
| R3313 | NRS463J-152X | MG R | 1.5kΩ 1/16W J |
| R3314 | NRS463J-221X | MG R | 220Ω 1/16W J |
| R3315 | NRS463J-101X | MG R | 100Ω 1/16W J |
| R3316 | NRS463J-222X | MG R | 2.2kΩ 1/16W J |
| R3317 | NRS463J-470X | MG R | 470Ω 1/16W J |
| R3318 | QRJ146J-100X | C R | 10Ω 1/4W J |
| R3319 | NRS463J-470X | MG R | 470Ω 1/16W J |
| R3320 | NRS463J-122X | MG R | 1.2kΩ 1/16W J |
| R3321 | NRS463J-390X | MG R | 390Ω 1/16W J |
| R3322 | QRE121J-2R7Y | C R | 2.7Ω 1/2W J |
| R3323 | QRE121J-563Y | C R | 56kΩ 1/2W J |
| R3324 | QRE121J-563Y | C R | 56kΩ 1/2W J |
| R3325 | NRS463J-122X | MG R | 1.2kΩ 1/16W J |
| R3326 | QRE121J-2R7Y | C R | 2.7Ω 1/2W J |
| R3327 | NRS463J-390X | MG R | 390Ω 1/16W J |
| R3328 | NRS463J-121X | MG R | 120Ω 1/16W J |
| R3329 | QRL029J-391 | OM R | 390Ω 2W J |
| CAPACITOR | | | |
| C3101 | NDC31HJ-391X | C CAP. | 390pF 50V J |
| C3102 | NDC31HJ-391X | C CAP. | 390pF 50V J |
| C3103 | NDC31HJ-391X | C CAP. | 390pF 50V J |
| C3104 | QETNLCM-107Z | E CAP. | 100μF 16V M |
| C3105 | QETNLEM-476Z | E CAP. | 47μF 25V M |
| C3107 | QETNLHM-106Z | E CAP. | 10μF 50V M |
| C3113 | QCZ0131-222 | C CAP. | 2200pF 2kV K |
| C3114 | QETM2EM-336 | E CAP. | 33μF 250V M |
| C3115 | QETM2EM-106 | E CAP. | 10μF 250V M |
| C3116 | NRS463J-0R0X | MG R | 0.0Ω 1/16W J |
| C3304 | NCB31HK-103X | C CAP. | 0.01μF 50V K |
| C3305 | QETNLHM-335Z | E CAP. | 3.3μF 50V M |
| C3306 | QETNLCM-107Z | E CAP. | 100μF 16V M |
| C3307 | NDC31HJ-5R0X | C CAP. | 5.0pF 50V J |
| C3308 | QETN2CM-106Z | E CAP. | 10μF 160V M |
| C3309 | QCB32HK-472Z | C CAP. | 4700pF 500V K |
| C3310 | QETN2CM-106Z | E CAP. | 10μF 160V M |
| C3311 | NDC31HJ-821X | C CAP. | 820pF 50V J |
| C3312 | QCB32HK-472Z | C CAP. | 4700pF 500V K |
| C3313 | NDC31HJ-561X | C CAP. | 560pF 50V J |
| C3314 | QETNLCM-107Z | E CAP. | 100μF 16V M |
| C3315 | QCS32HJ-680Z | C CAP. | 68pF 500V J |

AV28R25EKS
AV28R250EKS

| Symbol No. | Part No. | Part Name | Description |
|------------|-----------------|-----------------|-------------------|
| CAPACITOR | | | |
| C3316 | QETN1CM-107Z | E CAP. | 100 μ F 16V M |
| C3317 | QETN1AM-337Z | E CAP. | 330 μ F 10V M |
| COIL | | | |
| L3101 | QUY153-050Y | IM BUS WIRE | |
| L3102 | QUY153-050Y | IM BUS WIRE | |
| L3103 | QUY153-050Y | IM BUS WIRE | |
| L3301 | QQL244J-391Z | INDUCTOR | |
| DIODE | | | |
| D3151 | MA111-X | SI DIODE | |
| D3152 | MA3082/L/-X | Z DIODE | |
| D3153 | MA111-X | SI DIODE | |
| D3154 | MA111-X | SI DIODE | |
| D3155 | MA111-X | SI DIODE | |
| D3156 | MA3047/H/-X | Z DIODE | |
| D3163 | MA3150/M/-X | Z DIODE | |
| D3164 | 1SR35-400A-T2 | SI DIODE | |
| D3302 | RH15-T3 | SI DIODE | |
| D3303 | RH15-T3 | SI DIODE | |
| TRANSISTOR | | | |
| Q3101 | 2SC1740S/QR/-T | TRANSISTOR | |
| Q3102 | 2SC1740S/QR/-T | TRANSISTOR | |
| Q3103 | 2SC1740S/QR/-T | TRANSISTOR | |
| Q3104 | 2SC4544-LB | POW TRANSISTOR | |
| Q3105 | 2SC4544-LB | POW TRANSISTOR | |
| Q3106 | 2SC4544-LB | POW TRANSISTOR | |
| Q3151 | 2SA1037AK/QR/-X | TRANSISTOR | |
| Q3152 | 2SC4682-T | TRANSISTOR | |
| Q3304 | 2SC1740S/QR/-T | TRANSISTOR | |
| Q3305 | 2SC1740S/QR/-T | TRANSISTOR | |
| Q3306 | 2SA933AS/QR/-T | TRANSISTOR | |
| Q3307 | 2SA1837 | POWER TRANSISTO | |
| Q3308 | 2SC4793 | POWER TRANSISTO | |
| OTHERS | | | |
| CN3008 | QJK002-083633 | SIN CR C-B WIRE | |
| CN3009 | QJK002-063631 | SIN CR C-B WIRE | |
| FR3330 | QRZ9021-561 | F R | 560 Ω 1W J |
| K3101 | QQR0621-002Z | FERRITE BEADS | |
| K3301 | CE41492-001Z | CHOKE COIL | |
| K3302 | CE41492-001Z | CHOKE COIL | |
| K3304 | CE41492-001Z | CHOKE COIL | |
| SK3001 | QNZ0536-001 | CRT SOCKET | |

■ FRONT CONTROL P.W. BOARD ASS'Y (SJL-8003A-U2)

| Symbol No. | Part No. | Part Name | Description |
|---|----------------|-----------------|-----------------------|
| RESISTOR | | | |
| R8801 | NRS463J-561X | MG R | 560 Ω 1/16W J |
| R8802 | NRS463J-561X | MG R | 560 Ω 1/16W J |
| R8804 | NRS463J-103X | MG R | 10k Ω 1/16W J |
| R8851 | NRS463J-152X | MG R | 1.5k Ω 1/16W J |
| CAPACITOR | | | |
| C8851 | NCB31CK-104X | C CAP. | 0.1 μ F 16V K |
| C8852 | QETN1CM-107Z | E CAP. | 100 μ F 16V M |
| C8901 | QFZ9075-474 | MPP CAP. | 0.47 μ FAC275V M |
| DIODE | | | |
| D8801 | SPR-39MWNF | LED | |
| D8851 | MA3068/M/-X | Z DIODE | |
| TRANSISTOR | | | |
| Q8801 | DTA124EKA-X | DIGI TRANSISTOR | |
| Q8802 | DTA124EKA-X | DIGI TRANSISTOR | |
| Q8803 | DTC124EKA-X | DIGI TRANSISTOR | |
| OTHERS | | | |
| CN8101 | QGF1220C2-19 | FFC/FPC CONNE | |
| K3303 | CE41492-001Z | CHOKE COIL | |
| F8901 | QMF51D2-3R15J1 | FUSE | 3.15A |
| IC8851 | GP1U81Q | IR DETECT UNIT | |
| LF8901 | QQR1095-001 | LINE FILTER | |
| S8901 | QSW0824-001 | PUSH SWITCH | MAIN POWER |
| | LC30349-001A-H | LED HOLDER | |
| | CEM002-001Z | FUSE CLIP | |
| ■ SIDE CONTROL P.W. BOARD ASS'Y (SJL-8101A-U2) | | | |
| Symbol No. | Part No. | Part Name | Description |
| RESISTOR | | | |
| R8001 | QRE121J-271Y | C R | 270 Ω 1/2W J |
| R8002 | QRE121J-271Y | C R | 270 Ω 1/2W J |
| R8010 | NRS463J-103X | MG R | 10k Ω 1/16W J |
| R8011 | NRS463J-103X | MG R | 10k Ω 1/16W J |
| R8012 | NRS463J-103X | MG R | 10k Ω 1/16W J |
| R8021 | NRS463J-102X | MG R | 1k Ω 1/16W J |
| R8022 | NRS463J-102X | MG R | 1k Ω 1/16W J |
| R8023 | NRS463J-103X | MG R | 10k Ω 1/16W J |
| R8317 | NRS463J-750X | MG R | 75 Ω 1/16W J |
| CAPACITOR | | | |
| C8001 | NCB31HK-103X | C CAP. | 0.01 μ F 50V K |
| C8002 | NCB31HK-103X | C CAP. | 0.01 μ F 50V K |
| C8003 | NCB31HK-102X | C CAP. | 1000pF 50V K |
| C8004 | NCB31HK-102X | C CAP. | 1000pF 50V K |
| C8310 | NCB31HK-472X | C CAP. | 4700pF 50V K |
| C8311 | NCB31HK-472X | C CAP. | 4700pF 50V K |
| C8321 | NCB31CK-104X | C CAP. | 0.1 μ F 16V K |
| COIL | | | |
| L8001 | QQR0716-001Z | FERRITE BEADS | |
| L8002 | QQL244K-5R6Z | COIL | 5.6 μ H K |
| L8003 | QQL244K-5R6Z | COIL | 5.6 μ H K |
| L8310 | QQL244K-270Z | INDUCTOR | |
| L8311 | QQL244K-270Z | INDUCTOR | |
| L8312 | QQR0716-001Z | FERRITE BEADS | |
| OTHERS | | | |
| CN8016 | QGA2501CS-05Z | W TO B CONNE | |
| J8001 | QNS0169-001 | 3.5 JACK | |
| J8303 | QNZ0438-001 | AV JACK | |
| S8001 | QSW0619-003Z | TACT SWITCH | CH UP |
| S8002 | QSW0619-003Z | TACT SWITCH | MENU |
| S8003 | QSW0619-003Z | TACT SWITCH | CH DOWN |

■ AV SW P.W. BOARD ASS'Y (SJL0S003A-U2)

| △ Symbol No. | Part No. | Part Name | Description |
|-----------------|--------------|-----------|---------------|
| RESISTOR | | | |
| R0101 | NRSA63J-750X | MG R | 75Ω 1/16W J |
| R0102 | NRSA63J-750X | MG R | 75Ω 1/16W J |
| R0103 | NRSA63J-750X | MG R | 75Ω 1/16W J |
| R0104 | NRSA63J-750X | MG R | 75Ω 1/16W J |
| R0105 | NRSA63J-750X | MG R | 75Ω 1/16W J |
| R0106 | NRSA63J-750X | MG R | 75Ω 1/16W J |
| R0107 | NRSA63J-750X | MG R | 75Ω 1/16W J |
| R0108 | NRSA63J-750X | MG R | 75Ω 1/16W J |
| R0110 | NRSA63J-823X | MG R | 82kΩ 1/16W J |
| R0112 | NRSA63J-823X | MG R | 82kΩ 1/16W J |
| R0113 | NRSA63J-750X | MG R | 75Ω 1/16W J |
| R0114 | NRSA63J-473X | MG R | 47kΩ 1/16W J |
| R0115 | NRSA63J-223X | MG R | 22kΩ 1/16W J |
| R0116 | NRSA63J-223X | MG R | 22kΩ 1/16W J |
| R0117 | NRSA63J-823X | MG R | 82kΩ 1/16W J |
| R0118 | NRSA63J-823X | MG R | 82kΩ 1/16W J |
| R0119 | NRSA63J-391X | MG R | 390Ω 1/16W J |
| R0120 | NRSA63J-391X | MG R | 390Ω 1/16W J |
| R0123 | NRSA63J-104X | MG R | 100kΩ 1/16W J |
| R0124 | NRSA63J-101X | MG R | 100Ω 1/16W J |
| R0125 | NRSA63J-101X | MG R | 100Ω 1/16W J |
| R0126 | NRSA63J-333X | MG R | 33kΩ 1/16W J |
| R0127 | NRSA63J-101X | MG R | 100Ω 1/16W J |
| R0128 | NRSA63J-103X | MG R | 10kΩ 1/16W J |
| R0129 | NRSA63J-823X | MG R | 82kΩ 1/16W J |
| R0130 | NRSA63J-473X | MG R | 47kΩ 1/16W J |
| R0131 | NRSA63J-273X | MG R | 27kΩ 1/16W J |
| R0132 | NRSA63J-153X | MG R | 15kΩ 1/16W J |
| R0133 | NRSA63J-222X | MG R | 2.2kΩ 1/16W J |
| R0134 | NRSA63J-333X | MG R | 33kΩ 1/16W J |
| R0135 | NRSA63J-222X | MG R | 2.2kΩ 1/16W J |
| R0136 | NRSA63J-333X | MG R | 33kΩ 1/16W J |
| R0137 | NRSA63J-333X | MG R | 33kΩ 1/16W J |
| R0138 | NRSA63J-473X | MG R | 47kΩ 1/16W J |
| R0139 | NRSA63J-823X | MG R | 82kΩ 1/16W J |
| R0140 | NRSA63J-103X | MG R | 10kΩ 1/16W J |
| R0141 | NRSA63J-153X | MG R | 15kΩ 1/16W J |
| R0142 | NRSA63J-223X | MG R | 22kΩ 1/16W J |
| R0143 | NRSA63J-473X | MG R | 47kΩ 1/16W J |
| R0144 | NRSA63J-273X | MG R | 27kΩ 1/16W J |
| R0146 | NRSA63J-391X | MG R | 390Ω 1/16W J |
| R0148 | NRSA63J-391X | MG R | 390Ω 1/16W J |
| R0151 | NRSA63J-104X | MG R | 100kΩ 1/16W J |
| R0152 | NRSA63J-222X | MG R | 2.2kΩ 1/16W J |
| R0153 | NRSA63J-333X | MG R | 33kΩ 1/16W J |
| R0154 | NRSA63J-222X | MG R | 2.2kΩ 1/16W J |
| R0155 | NRSA63J-333X | MG R | 33kΩ 1/16W J |
| R0156 | NRSA63J-101X | MG R | 100Ω 1/16W J |
| R0157 | NRSA63J-101X | MG R | 100Ω 1/16W J |
| R0158 | NRSA63J-101X | MG R | 100Ω 1/16W J |
| R0159 | NRSA63J-101X | MG R | 100Ω 1/16W J |
| R0160 | NRSA63J-101X | MG R | 100Ω 1/16W J |
| R0161 | NRSA63J-101X | MG R | 100Ω 1/16W J |
| R0162 | NRSA63J-101X | MG R | 100Ω 1/16W J |
| R0163 | NRSA63J-101X | MG R | 100Ω 1/16W J |
| R0164 | NRSA63J-101X | MG R | 100Ω 1/16W J |
| R0165 | NRSA63J-101X | MG R | 100Ω 1/16W J |
| R0166 | NRSA63J-101X | MG R | 100Ω 1/16W J |
| R0167 | NRSA63J-101X | MG R | 100Ω 1/16W J |
| R0168 | NRSA63J-101X | MG R | 100Ω 1/16W J |
| R0169 | NRSA63J-101X | MG R | 100Ω 1/16W J |
| R0170 | NRSA63J-333X | MG R | 33kΩ 1/16W J |
| R0171 | NRSA63J-222X | MG R | 2.2kΩ 1/16W J |
| R0172 | NRSA63J-473X | MG R | 47kΩ 1/16W J |
| R0173 | NRSA63J-823X | MG R | 82kΩ 1/16W J |
| R0174 | NRSA63J-103X | MG R | 10kΩ 1/16W J |
| R0175 | NRSA63J-153X | MG R | 15kΩ 1/16W J |
| R0176 | NRSA63J-473X | MG R | 47kΩ 1/16W J |
| R0177 | NRSA63J-273X | MG R | 27kΩ 1/16W J |
| R0180 | NRSA63J-101X | MG R | 100Ω 1/16W J |
| R0181 | NRSA63J-101X | MG R | 100Ω 1/16W J |
| R0182 | NRSA63J-101X | MG R | 100Ω 1/16W J |

△ Symbol No. Part No. Part Name Description

RESISTOR

| | | | |
|-------|--------------|------|---------------|
| R0183 | NRSA63J-101X | MG R | 100Ω 1/16W J |
| R0184 | NRSA63J-333X | MG R | 33kΩ 1/16W J |
| R0185 | NRSA63J-222X | MG R | 2.2kΩ 1/16W J |
| R0186 | NRSA63J-333X | MG R | 33kΩ 1/16W J |
| R0188 | NRSA63J-101X | MG R | 100Ω 1/16W J |
| R0189 | NRSA63J-221X | MG R | 220Ω 1/16W J |
| R0190 | NRSA63J-221X | MG R | 220Ω 1/16W J |
| R0191 | NRSA63J-562X | MG R | 5.6kΩ 1/16W J |
| R0192 | NRSA63J-562X | MG R | 5.6kΩ 1/16W J |
| R0193 | NRSA63J-102X | MG R | 1kΩ 1/16W J |
| R0194 | NRSA63J-102X | MG R | 1kΩ 1/16W J |
| R0195 | QRG01GJ-101 | OM R | 100Ω 1W J |
| R0197 | QRK126J-181X | C R | 180Ω 1/2W J |
| R0198 | NRSA63J-750X | MG R | 75Ω 1/16W J |
| R0199 | NRSA63J-101X | MG R | 100Ω 1/16W J |
| R0202 | QRK126J-151X | C R | 150Ω 1/2W J |
| R0203 | NRSA63J-750X | MG R | 75Ω 1/16W J |
| R0204 | NRSA63J-750X | MG R | 75Ω 1/16W J |
| R0205 | NRSA63J-750X | MG R | 75Ω 1/16W J |
| R0207 | NRSA63J-222X | MG R | 2.2kΩ 1/16W J |
| R0208 | NRSA63J-333X | MG R | 33kΩ 1/16W J |
| R0209 | NRSA63J-222X | MG R | 2.2kΩ 1/16W J |
| R0210 | NRSA63J-333X | MG R | 33kΩ 1/16W J |
| R0211 | NRSA63J-103X | MG R | 10kΩ 1/16W J |
| R0212 | NRSA63J-103X | MG R | 10kΩ 1/16W J |
| R0606 | QRG01GJ-181 | OM R | 180Ω 1W J |
| R0628 | NRSA63J-0R0X | MG R | 0.0Ω 1/16W J |
| R0629 | NRSA63J-101X | MG R | 100Ω 1/16W J |
| R0630 | NRSA63J-101X | MG R | 100Ω 1/16W J |

CAPACITOR

| | | | |
|-------|--------------|-----------|--------------|
| C0101 | NCB31HK-152X | C CAP. | 1500pF 50V K |
| C0102 | QETNLCM-477Z | E CAP. | 470μF 16V M |
| C0103 | QETNLHM-106Z | E CAP. | 10μF 50V M |
| C0104 | QETNLHM-106Z | E CAP. | 10μF 50V M |
| C0105 | QETNLHM-106Z | E CAP. | 10μF 50V M |
| C0106 | NCB31HK-472X | C CAP. | 4700pF 50V K |
| C0107 | NCB31HK-152X | C CAP. | 1500pF 50V K |
| C0108 | NCB31HK-472X | C CAP. | 4700pF 50V K |
| C0109 | NCB31HK-152X | C CAP. | 1500pF 50V K |
| C0110 | QETNLCM-477Z | E CAP. | 470μF 16V M |
| C0111 | NCB31HK-472X | C CAP. | 4700pF 50V K |
| C0112 | NCB31HK-472X | C CAP. | 4700pF 50V K |
| C0113 | NCB31HK-152X | C CAP. | 1500pF 50V K |
| C0114 | NCB31HK-472X | C CAP. | 4700pF 50V K |
| C0115 | NCB31HK-472X | C CAP. | 4700pF 50V K |
| C0116 | QETNLHM-106Z | E CAP. | 10μF 50V M |
| C0117 | QETNLHM-106Z | E CAP. | 10μF 50V M |
| C0118 | NCB31HK-102X | C CAP. | 1000pF 50V K |
| C0119 | QETNLHM-105Z | E CAP. | 1.0μF 50V M |
| C0120 | QETNLHM-106Z | E CAP. | 10μF 50V M |
| C0121 | QETNLHM-105Z | E CAP. | 1.0μF 50V M |
| C0122 | NCB31HK-103X | C CAP. | 0.01μF 50V K |
| C0123 | NCB31HK-102X | C CAP. | 1000pF 50V K |
| C0124 | QETNLHM-106Z | E CAP. | 10μF 50V M |
| C0125 | QETNLHM-106Z | E CAP. | 10μF 50V M |
| C0126 | QETNLHM-105Z | E CAP. | 1.0μF 50V M |
| C0127 | QETNLHM-106Z | E CAP. | 10μF 50V M |
| C0128 | QETNLHM-105Z | E CAP. | 1.0μF 50V M |
| C0129 | QETNLHM-106Z | E CAP. | 10μF 50V M |
| C0130 | QETNLHM-105Z | E CAP. | 1.0μF 50V M |
| C0131 | NCB31HK-102X | C CAP. | 1000pF 50V K |
| C0132 | QETNLHM-105Z | E CAP. | 1.0μF 50V M |
| C0133 | NCB31HK-103X | C CAP. | 0.01μF 50V K |
| C0136 | QETNLHM-106Z | E CAP. | 10μF 50V M |
| C0137 | QENCLEM-106Z | BP E CAP. | 10μF 25V M |
| C0139 | QENCLEM-106Z | BP E CAP. | 10μF 25V M |
| C0140 | QETNLCM-107Z | E CAP. | 100μF 16V M |
| C0141 | NCB31HK-103X | C CAP. | 0.01μF 50V K |
| C0142 | NCF31AZ-105X | C CAP. | 1μF 10V Z |
| C0143 | QENCLEM-106Z | BP E CAP. | 10μF 25V M |
| C0144 | NCF31AZ-105X | C CAP. | 1μF 10V Z |

AV28R25EKS
AV28R250EKS

| △ Symbol No. | Part No. | Part Name | Description |
|--------------|--------------|-----------|--------------|
| CAPACITOR | | | |
| C0145 | QETNLCM-107Z | E CAP. | 100μF 16V M |
| C0146 | QETNLCM-107Z | E CAP. | 100μF 16V M |
| C0147 | QETNLCM-477Z | E CAP. | 470μF 16V M |
| C0149 | NCB31HK-103X | C CAP. | 0.01μF 50V K |
| C0150 | QETNLHM-106Z | E CAP. | 10μF 50V M |
| C0151 | QETNLHM-106Z | E CAP. | 10μF 50V M |
| C0152 | QETNLHM-105Z | E CAP. | 1.0μF 50V M |
| C0153 | QETNLHM-105Z | E CAP. | 1.0μF 50V M |
| C0154 | NDC31HJ-680X | C CAP. | 68pF 50V J |
| C0155 | NDC31HJ-680X | C CAP. | 68pF 50V J |
| C0157 | NDC31HJ-680X | C CAP. | 68pF 50V J |
| C0158 | NDC31HJ-680X | C CAP. | 68pF 50V J |
| C0616 | QETNLCM-107Z | E CAP. | 100μF 16V M |
| C0617 | NCB31CK-104X | C CAP. | 0.1μF 16V K |
| C0618 | QETNLHM-106Z | E CAP. | 10μF 50V M |
| C0619 | NCB31CK-104X | C CAP. | 0.1μF 16V K |
| C0620 | QETNLHM-106Z | E CAP. | 10μF 50V M |
| C0623 | NCB31CK-104X | C CAP. | 0.1μF 16V K |
| C0624 | QETNLHM-106Z | E CAP. | 10μF 50V M |
| C0629 | QETNLHM-106Z | E CAP. | 10μF 50V M |
| C0630 | NCB31HK-102X | C CAP. | 1000pF 50V K |
| C0631 | NCB31HK-102X | C CAP. | 1000pF 50V K |
| C0632 | NCB31CK-104X | C CAP. | 0.1μF 16V K |
| C0633 | QETNLHM-106Z | E CAP. | 10μF 50V M |
| C0634 | NCB31HK-103X | C CAP. | 0.01μF 50V K |
| C0635 | NCB31HK-103X | C CAP. | 0.01μF 50V K |
| C0636 | NDC31HJ-2R0X | C CAP. | 2.0pF 50V J |
| C0642 | NDC31HJ-2R0X | C CAP. | 2.0pF 50V J |
| C0645 | NCB31HK-103X | C CAP. | 0.01μF 50V K |
| C0646 | NCB31CK-104X | C CAP. | 0.1μF 16V K |
| C0647 | QETNLCM-107Z | E CAP. | 100μF 16V M |
| C0648 | NCB31CK-104X | C CAP. | 0.1μF 16V K |

| | | | |
|-------|--------------|---------------|-------------|
| COIL | | | |
| L0114 | QQR0716-001Z | FERRITE BEADS | |
| L0608 | QRN143J-0R0X | C R | 0.0Ω 1/4W J |
| L0609 | QQL244K-4R7Z | COIL | 4.7μH K |

| | | | |
|-------|---------------|---------|--|
| DIODE | | | |
| D0101 | MA3120/M/-X | Z DIODE | |
| D0102 | MA3120/M/-X | Z DIODE | |
| D0108 | MA3120/M/-X | Z DIODE | |
| D0104 | MA3120/M/-X | Z DIODE | |
| D0105 | MA3120/M/-X | Z DIODE | |
| D0106 | MA3120/M/-X | Z DIODE | |
| D0107 | MA3120/M/-X | Z DIODE | |
| D0108 | MA3120/M/-X | Z DIODE | |
| D0109 | MA3120/M/-X | Z DIODE | |
| D0110 | MA3120/M/-X | Z DIODE | |
| D0111 | MA3120/M/-X | Z DIODE | |
| D0112 | MA3120/M/-X | Z DIODE | |
| D0113 | MA3120/M/-X | Z DIODE | |
| D0601 | RD8.2E/B2/-T2 | Z DIODE | |

| | | | |
|------------|-----------------|-----------------|--|
| TRANSISTOR | | | |
| Q0101 | DTC323TK-X | DIGI TRANSISTOR | |
| Q0102 | 2SA1037AK/QR/-X | TRANSISTOR | |
| Q0108 | DTC323TK-X | DIGI TRANSISTOR | |
| Q0104 | 2SC2412K/QR/-X | TRANSISTOR | |
| Q0105 | 2SC2412K/QR/-X | TRANSISTOR | |
| Q0106 | 2SC2412K/QR/-X | TRANSISTOR | |
| Q0107 | 2SC2412K/QR/-X | TRANSISTOR | |
| Q0108 | 2SA1037AK/QR/-X | TRANSISTOR | |
| Q0109 | DTC323TK-X | DIGI TRANSISTOR | |
| Q0110 | DTC323TK-X | DIGI TRANSISTOR | |
| Q0111 | 2SC2412K/QR/-X | TRANSISTOR | |
| Q0112 | 2SC2412K/QR/-X | TRANSISTOR | |
| Q0116 | 2SA993AS/QR/-T | TRANSISTOR | |
| Q0118 | 2SC1740S/QR/-T | TRANSISTOR | |
| Q0119 | 2SC2412K/QR/-X | TRANSISTOR | |

| △ Symbol No. | Part No. | Part Name | Description |
|--------------|-----------------|-----------------|-------------|
| TRANSISTOR | | | |
| Q0120 | 2SC2412K/QR/-X | TRANSISTOR | |
| IC | | | |
| IC0101 | CXA2089Q-X | IC | |
| IC0603 | MSP3415DQGB3GHX | IC | |
| OTHERS | | | |
| CN0006 | QGB1505K1-50 | B TO B CONNE | |
| J0001 | QNZ0465-001 | 21P CONNECTOR | |
| J0002 | QNZ0463-001 | 21P CONNECTOR | |
| K0101 | CE42681-001Y | CHIP BEADS CORE | |
| K0102 | CE42681-001Y | CHIP BEADS CORE | |
| K0103 | CE42681-001Y | CHIP BEADS CORE | |
| K0104 | CE42681-001Y | CHIP BEADS CORE | |
| K0601 | NQR089-003X | FERRITE BEADS | |
| K0602 | NQR089-003X | FERRITE BEADS | |
| LC0601 | NQR0431-001X | EMI FILTER | |
| X0601 | CE42546-001Z | X TAL | |

■ DOLBY P.W. BOARD ASS'Y (SJL0D001A-U2)

| △ Symbol No. | Part No. | Part Name | Description |
|--------------|--------------|-----------|---------------|
| RESISTOR | | | |
| R101 | NRSΛ63J-223X | MG R | 22kΩ 1/16W J |
| R102 | NRSΛ63J-683X | MG R | 68kΩ 1/16W J |
| R103 | NRSΛ63J-223X | MG R | 22kΩ 1/16W J |
| R104 | NRSΛ63J-683X | MG R | 68kΩ 1/16W J |
| R105 | NRSΛ63J-105X | MG R | 1MΩ 1/16W J |
| R106 | NRSΛ63J-271X | MG R | 270Ω 1/16W J |
| R107 | NRSΛ63J-271X | MG R | 270Ω 1/16W J |
| R108 | NRSΛ63J-271X | MG R | 270Ω 1/16W J |
| R109 | NRSΛ63J-271X | MG R | 270Ω 1/16W J |
| R110 | NRSΛ63J-473X | MG R | 47kΩ 1/16W J |
| R111 | NRSΛ63J-102X | MG R | 1kΩ 1/16W J |
| R112 | NRSΛ63J-0R0X | MG R | 0.Ω 1/16W J |
| R113 | NRSΛ63J-102X | MG R | 1kΩ 1/16W J |
| R114 | NRSΛ63J-0R0X | MG R | 0.Ω 1/16W J |
| R115 | NRSΛ63J-102X | MG R | 1kΩ 1/16W J |
| R117 | NRSΛ63J-472X | MG R | 4.7kΩ 1/16W J |
| R118 | NRSΛ63J-103X | MG R | 10kΩ 1/16W J |
| R201 | NRSΛ63J-273X | MG R | 27kΩ 1/16W J |
| R202 | NRSΛ63J-153X | MG R | 15kΩ 1/16W J |
| R203 | NRSΛ63J-103X | MG R | 10kΩ 1/16W J |
| R204 | NRSΛ63J-103X | MG R | 10kΩ 1/16W J |
| R205 | NRSΛ63J-103X | MG R | 10kΩ 1/16W J |
| R206 | NRSΛ63J-104X | MG R | 100kΩ 1/16W J |
| R207 | NRSΛ63J-273X | MG R | 27kΩ 1/16W J |
| R208 | NRSΛ63J-153X | MG R | 15kΩ 1/16W J |
| R209 | NRSΛ63J-104X | MG R | 100kΩ 1/16W J |
| R210 | NRSΛ63J-103X | MG R | 10kΩ 1/16W J |
| R211 | NRSΛ63J-123X | MG R | 12kΩ 1/16W J |
| R212 | NRSΛ63J-103X | MG R | 10kΩ 1/16W J |
| R213 | NRSΛ63J-104X | MG R | 100kΩ 1/16W J |
| R214 | NRSΛ63J-123X | MG R | 12kΩ 1/16W J |
| R215 | NRSΛ63J-123X | MG R | 12kΩ 1/16W J |
| R216 | NRSΛ63J-103X | MG R | 10kΩ 1/16W J |
| R217 | NRSΛ63J-104X | MG R | 100kΩ 1/16W J |
| R218 | NRSΛ63J-123X | MG R | 12kΩ 1/16W J |

△ Symbol No. Part No. Part Name Description

RESISTOR

| | | | |
|------|-------------|------|---------------|
| R303 | NRS63J-103X | MG R | 10kΩ 1/16W J |
| R304 | NRS63J-394X | MG R | 390kΩ 1/16W J |
| R305 | NRS63J-394X | MG R | 390kΩ 1/16W J |
| R306 | NRS63J-562X | MG R | 5.6kΩ 1/16W J |
| R307 | NRS63J-562X | MG R | 5.6kΩ 1/16W J |
| R310 | NRS63J-562X | MG R | 5.6kΩ 1/16W J |
| R311 | NRS63J-562X | MG R | 5.6kΩ 1/16W J |
| R312 | NRS63J-394X | MG R | 390kΩ 1/16W J |
| R313 | NRS63J-394X | MG R | 390kΩ 1/16W J |
| R314 | NRS63J-103X | MG R | 10kΩ 1/16W J |
| R315 | NRS63J-103X | MG R | 10kΩ 1/16W J |
| R401 | NRS63J-101X | MG R | 100Ω 1/16W J |
| R402 | NRS63J-104X | MG R | 100kΩ 1/16W J |
| R403 | NRS63J-223X | MG R | 22kΩ 1/16W J |
| R404 | NRS63J-103X | MG R | 10kΩ 1/16W J |
| R405 | NRS63J-103X | MG R | 10kΩ 1/16W J |
| R407 | NRS63J-183X | MG R | 18kΩ 1/16W J |
| R408 | NRS63J-101X | MG R | 100Ω 1/16W J |
| R409 | NRS63J-104X | MG R | 100kΩ 1/16W J |
| R501 | NRS63J-273X | MG R | 27kΩ 1/16W J |
| R502 | NRS63J-153X | MG R | 15kΩ 1/16W J |
| R503 | NRS63J-103X | MG R | 10kΩ 1/16W J |
| R504 | NRS63J-104X | MG R | 100kΩ 1/16W J |
| R505 | NRS63J-153X | MG R | 15kΩ 1/16W J |
| R506 | NRS63J-103X | MG R | 10kΩ 1/16W J |
| R507 | NRS63J-273X | MG R | 27kΩ 1/16W J |
| R508 | NRS63J-103X | MG R | 10kΩ 1/16W J |
| R509 | NRS63J-104X | MG R | 100kΩ 1/16W J |
| R510 | NRS63J-681X | MG R | 680Ω 1/16W J |
| R511 | NRS63J-681X | MG R | 680Ω 1/16W J |
| R512 | NRS63J-103X | MG R | 10kΩ 1/16W J |
| R514 | NRS63J-104X | MG R | 100kΩ 1/16W J |
| R516 | NRS63J-103X | MG R | 10kΩ 1/16W J |
| R517 | NRS63J-103X | MG R | 10kΩ 1/16W J |
| R551 | NRS63J-103X | MG R | 10kΩ 1/16W J |
| R552 | NRS63J-103X | MG R | 10kΩ 1/16W J |
| R553 | NRS63J-472X | MG R | 4.7kΩ 1/16W J |
| R554 | NRS63J-822X | MG R | 8.2kΩ 1/16W J |
| R555 | NRS63J-333X | MG R | 33kΩ 1/16W J |
| R556 | NRS63J-333X | MG R | 33kΩ 1/16W J |
| R557 | NRS63J-333X | MG R | 33kΩ 1/16W J |
| R558 | NRS63J-472X | MG R | 4.7kΩ 1/16W J |
| R559 | NRS63J-153X | MG R | 15kΩ 1/16W J |
| R560 | NRS63J-683X | MG R | 68kΩ 1/16W J |
| R561 | NRS63J-153X | MG R | 15kΩ 1/16W J |
| R562 | NRS63J-683X | MG R | 68kΩ 1/16W J |

CAPACITOR

| | | | |
|------|--------------|--------|-------------|
| C101 | NCB31CK-104X | C CAP. | 0.1μF 16V K |
| C103 | NDC31HJ-221X | C CAP. | 220pF 50V J |
| C104 | QETN1HM-475Z | E CAP. | 4.7μF 50V M |
| C105 | NCB31CK-104X | C CAP. | 0.1μF 16V K |
| C106 | QETN1EM-476Z | E CAP. | 47μF 25V M |
| C107 | QETN1EM-476Z | E CAP. | 47μF 25V M |
| C108 | QETN1EM-476Z | E CAP. | 47μF 25V M |
| C109 | QETN1HM-475Z | E CAP. | 4.7μF 50V M |
| C110 | NDC31HJ-221X | C CAP. | 220pF 50V J |
| C111 | NDC31HJ-100X | C CAP. | 10pF 50V J |
| C112 | NDC31HJ-100X | C CAP. | 10pF 50V J |
| C114 | QETN1EM-476Z | E CAP. | 47μF 25V M |
| C115 | QETN1EM-476Z | E CAP. | 47μF 25V M |
| C116 | NCB31CK-104X | C CAP. | 0.1μF 16V K |
| C117 | QETN1EM-476Z | E CAP. | 47μF 25V M |
| C118 | QETN1EM-476Z | E CAP. | 47μF 25V M |
| C119 | QETN1EM-476Z | E CAP. | 47μF 25V M |
| C120 | NCB31CK-104X | C CAP. | 0.1μF 16V K |
| C121 | QETN1EM-476Z | E CAP. | 47μF 25V M |
| C122 | QETN1EM-476Z | E CAP. | 47μF 25V M |
| C123 | NCB31CK-104X | C CAP. | 0.1μF 16V K |
| C124 | NDC31HJ-221X | C CAP. | 220pF 50V J |
| C125 | NDC31HJ-221X | C CAP. | 220pF 50V J |
| C126 | NDC31HJ-221X | C CAP. | 220pF 50V J |

△ Symbol No. Part No. Part Name Description

CAPACITOR

| | | | |
|------|--------------|--------|---------------|
| C127 | NDC31HJ-221X | C CAP. | 220pF 50V J |
| C128 | QETN1EM-476Z | E CAP. | 47μF 25V M |
| C129 | NCB31CK-104X | C CAP. | 0.1μF 16V K |
| C130 | NCB31CK-104X | C CAP. | 0.1μF 16V K |
| C131 | NCB31CK-104X | C CAP. | 0.1μF 16V K |
| C132 | NCB31CK-104X | C CAP. | 0.1μF 16V K |
| C133 | NCB31CK-104X | C CAP. | 0.1μF 16V K |
| C134 | QETN1CM-107Z | E CAP. | 100μF 16V M |
| C135 | NCB31CK-104X | C CAP. | 0.1μF 16V K |
| C137 | QETN1CM-107Z | E CAP. | 100μF 16V M |
| C138 | QETN1EM-476Z | E CAP. | 47μF 25V M |
| C142 | NCB31CK-104X | C CAP. | 0.1μF 16V K |
| C145 | NCB31CK-104X | C CAP. | 0.1μF 16V K |
| C148 | NCB31HK-222X | C CAP. | 2200pF 50V K |
| C149 | NCB31HK-222X | C CAP. | 2200pF 50V K |
| C150 | NCB31CK-104X | C CAP. | 0.1μF 16V K |
| C151 | NCB31CK-104X | C CAP. | 0.1μF 16V K |
| C152 | QETN1CM-107Z | E CAP. | 100μF 16V M |
| C201 | NDC31HJ-470X | C CAP. | 47pF 50V J |
| C202 | NCF31AZ-105X | C CAP. | 1μF 10V Z |
| C203 | QETN1EM-476Z | E CAP. | 47μF 25V M |
| C204 | NDC31HJ-470X | C CAP. | 47pF 50V J |
| C205 | NCF31AZ-105X | C CAP. | 1μF 10V Z |
| C206 | QETN1EM-476Z | E CAP. | 47μF 25V M |
| C207 | NCF31AZ-105X | C CAP. | 1μF 10V Z |
| C208 | NDC31HJ-470X | C CAP. | 47pF 50V J |
| C209 | NDC31HJ-470X | C CAP. | 47pF 50V J |
| C210 | NCF31AZ-105X | C CAP. | 1μF 10V Z |
| C301 | QETN1EM-476Z | E CAP. | 47μF 25V M |
| C302 | NCB31CK-104X | C CAP. | 0.1μF 16V K |
| C303 | NCB31CK-104X | C CAP. | 0.1μF 16V K |
| C304 | NCB31CK-104X | C CAP. | 0.1μF 16V K |
| C305 | NCB31CK-104X | C CAP. | 0.1μF 16V K |
| C306 | NCB31HK-222X | C CAP. | 2200pF 50V K |
| C307 | NCB31HK-222X | C CAP. | 2200pF 50V K |
| C308 | QETN1HM-226Z | E CAP. | 22μF 50V M |
| C309 | NCF31AZ-105X | C CAP. | 1μF 10V Z |
| C310 | NCF31AZ-105X | C CAP. | 1μF 10V Z |
| C311 | QETN1EM-476Z | E CAP. | 47μF 25V M |
| C312 | NCB31CK-104X | C CAP. | 0.1μF 16V K |
| C313 | NCB31CK-104X | C CAP. | 0.1μF 16V K |
| C314 | NCB31CK-104X | C CAP. | 0.1μF 16V K |
| C315 | NCB31CK-104X | C CAP. | 0.1μF 16V K |
| C316 | NCB31HK-222X | C CAP. | 2200pF 50V K |
| C317 | QETN1EM-476Z | E CAP. | 47μF 25V M |
| C318 | QETN1HM-226Z | E CAP. | 22μF 50V M |
| C319 | NCF31AZ-105X | C CAP. | 1μF 10V Z |
| C320 | NCF31AZ-105X | C CAP. | 1μF 10V Z |
| C321 | NCB31HK-222X | C CAP. | 2200pF 50V K |
| C401 | NCF31AZ-105X | C CAP. | 1μF 10V Z |
| C402 | NDC31HJ-470X | C CAP. | 47pF 50V J |
| C404 | NCF31AZ-105X | C CAP. | 1μF 10V Z |
| C405 | QETN1EM-476Z | E CAP. | 47μF 25V M |
| C406 | NCF31AZ-105X | C CAP. | 1μF 10V Z |
| C501 | NCF31AZ-105X | C CAP. | 1μF 10V Z |
| C502 | NCF31AZ-105X | C CAP. | 1μF 10V Z |
| C503 | NDC31HJ-100X | C CAP. | 10pF 50V J |
| C504 | NDC31HJ-100X | C CAP. | 10pF 50V J |
| C505 | QETN1EM-476Z | E CAP. | 47μF 25V M |
| C506 | QETN1HM-106Z | E CAP. | 10μF 50V M |
| C507 | QETN1HM-106Z | E CAP. | 10μF 50V M |
| C508 | QETN1EM-476Z | E CAP. | 47μF 25V M |
| C509 | NCB31HK-222X | C CAP. | 2200pF 50V K |
| C510 | NCB31HK-222X | C CAP. | 2200pF 50V K |
| C551 | QETN1EM-476Z | E CAP. | 47μF 25V M |
| C552 | NCB31CK-823X | C CAP. | 0.082μF 16V K |
| C553 | NCB31HK-123X | C CAP. | 0.012μF 50V K |
| C554 | QETN1EM-476Z | E CAP. | 47μF 25V M |
| C555 | NCB31HK-103X | C CAP. | 0.01μF 50V K |
| C556 | NCB31HK-103X | C CAP. | 0.01μF 50V K |
| C557 | QETN1HM-106Z | E CAP. | 10μF 50V M |
| C558 | NCB31EK-273X | C CAP. | 0.027μF 25V K |
| C559 | NCB31EK-273X | C CAP. | 0.027μF 25V K |

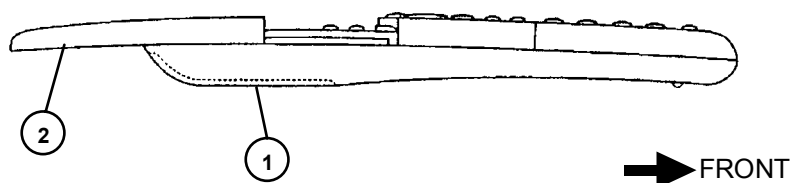
AV28R25EKS AV28R250EKS

| Symbol No. | Part No. | Part Name | Description |
|-------------------|-----------------|-----------------|------------------|
| CAPACITOR | | | |
| C560 | QETNLHM-106Z | E CAP. | 10 μ F 50V M |
| C561 | NCF31AZ-105X | C CAP. | 1 μ F 10V Z |
| C562 | NCF31AZ-105X | C CAP. | 1 μ F 10V Z |
| COIL | | | |
| L101 | NQL085J-4R7X | INDUCTOR | |
| L102 | NQL085J-4R7X | INDUCTOR | |
| L103 | NQL085J-4R7X | INDUCTOR | |
| L104 | NQL085J-4R7X | INDUCTOR | |
| L501 | NQL085J-100X | INDUCTOR | |
| L502 | NQL085J-100X | INDUCTOR | |
| DIODE | | | |
| D105 | MA111-X | SI DIODE | |
| D501 | MA3150/M/-X | Z DIODE | |
| D502 | MA3150/M/-X | Z DIODE | |
| TRANSISTOR | | | |
| Q101 | DTC124EKA-X | DIGI TRANSISTOR | |
| Q301 | DTC124EKA-X | DIGI TRANSISTOR | |
| Q501 | 2SA1037AK/QR/-X | TRANSISTOR | |
| Q502 | DTC323TK-X | DIGI TRANSISTOR | |
| Q503 | DTC323TK-X | DIGI TRANSISTOR | |

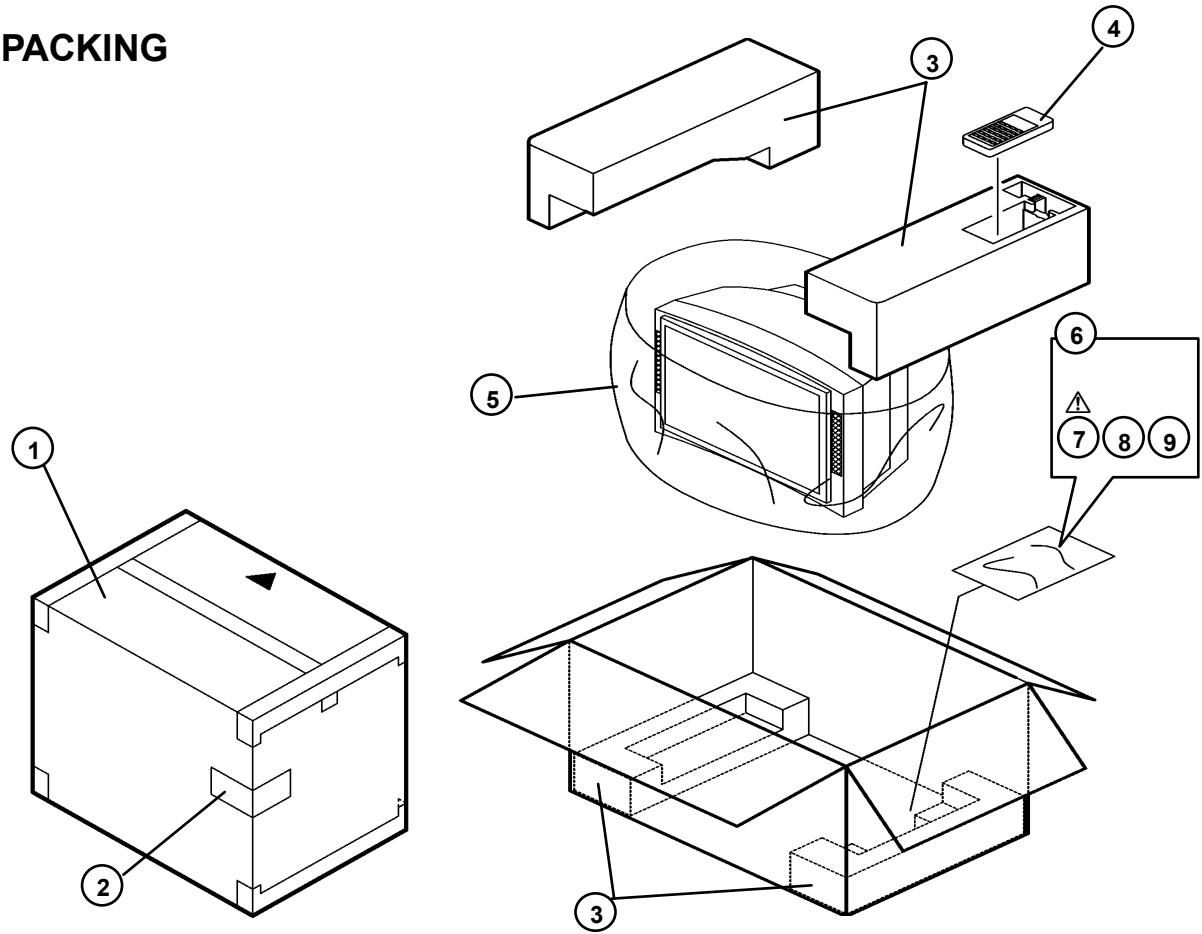
| Symbol No. | Part No. | Part Name | Description |
|---------------|----------------|---------------|-------------|
| IC | | | |
| IC101 | TC9471F | IC | |
| IC102 | S-80828ANNP-W | IC | |
| IC201 | BA10824AF-XE | IC | |
| IC301 | TC4052BF/N/-XE | IC | |
| IC302 | BD3869F-X | IC | |
| IC303 | BD3869F-X | IC | |
| IC401 | BA4558F-X | IC | |
| IC501 | BA4558F-X | IC | |
| IC551 | BA10824AF-XE | IC | |
| OTHERS | | | |
| CN012 | QGB1505K1-40 | B TO B CONNE | |
| J001 | QNN0294-001 | PIN JACK | |
| J002 | QNB0006-002 | PUSH TERMINAL | |
| LC101 | NQR0813-009X | EMI FILTER | |
| LC102 | NQR0813-009X | EMI FILTER | |
| X101 | NAX0288-001X | CRYSTAL | |

REMOTE CONTROL UNIT PARTS LIST

| Ref.No. | Part No. | Part Name | Description |
|--|-----------|---------------|-------------|
| AV28R25EKS / AV28R250EKS (RM-C60H-1C) | | | |
| 1 | 2AA027770 | BATTERY COVER | |
| 2 | 2AA027760 | SLIDE COVER | |



PACKING



PACKING PARTS LIST

| △ Ref.No. | Part No. | Part Name | Description |
|-------------|----------------|---------------|--------------|
| AV28R25EKS | | | |
| 1 | LC10101-016A | PACKING CASE | 4pcs in 1set |
| 2 | AEM1064-001-E | EURO LABEL | |
| 3 | LC11318-002B | CUSHION ASSY | |
| 4 | RM-C60H-1C | RC HAND UNIT | |
| 5 | AEM1047-A02-E | FORM BAG | 4pcs in 1set |
| 6 | AEM3021-002-E | DOCUMENT BAGS | |
| △ 7 | LCT1152-001A-U | INST BOOK | |
| 8 | BT-54013-1E | WARRANTY CARD | |
| 9 | AEM3148-001-E | REG CARD | |
| AV28R250EKS | | | |
| 1 | LC10101-016A | PACKING CASE | 4pcs in 1set |
| 2 | AEM1064-001-E | EURO LABEL | |
| 3 | LC11318-002B | CUSHION ASSY | |
| 4 | RM-C60H-1C | REMOCON | |
| 5 | AEM1047-A02-E | FORM BAG | 4pcs in 1set |
| 6 | AEM3021-002-E | DOCUMENT BAGS | |
| △ 7 | LCT1152-001A-U | INST BOOK | |
| 8 | BT-54013-1E | WARRANTY CARD | |
| 9 | AEM3148-001-E | REG CARD | |

..
AV28R25EKS
AV28R250EKS

...

=====
Memo
=====

Memo



VICTOR COMPANY OF JAPAN, LIMITED
HOME AV NETWORK BUSINESS UNIT

12, 3-chome, Moriya-cho, Kanagawa-ku, Yokohama, Kanagawa-prefecture, 221-8528, Japan

28R25EKS-U 28R250EKS-U



Printed in Japan
VP 0203
DP025861