

VESTEL ELEKTRONİK A.Ş.	CHANGE BULLETIN (TCN)	CHANGE NO: 40 REF NO :ÜDM-46/1
-----------------------------------	----------------------------------	---

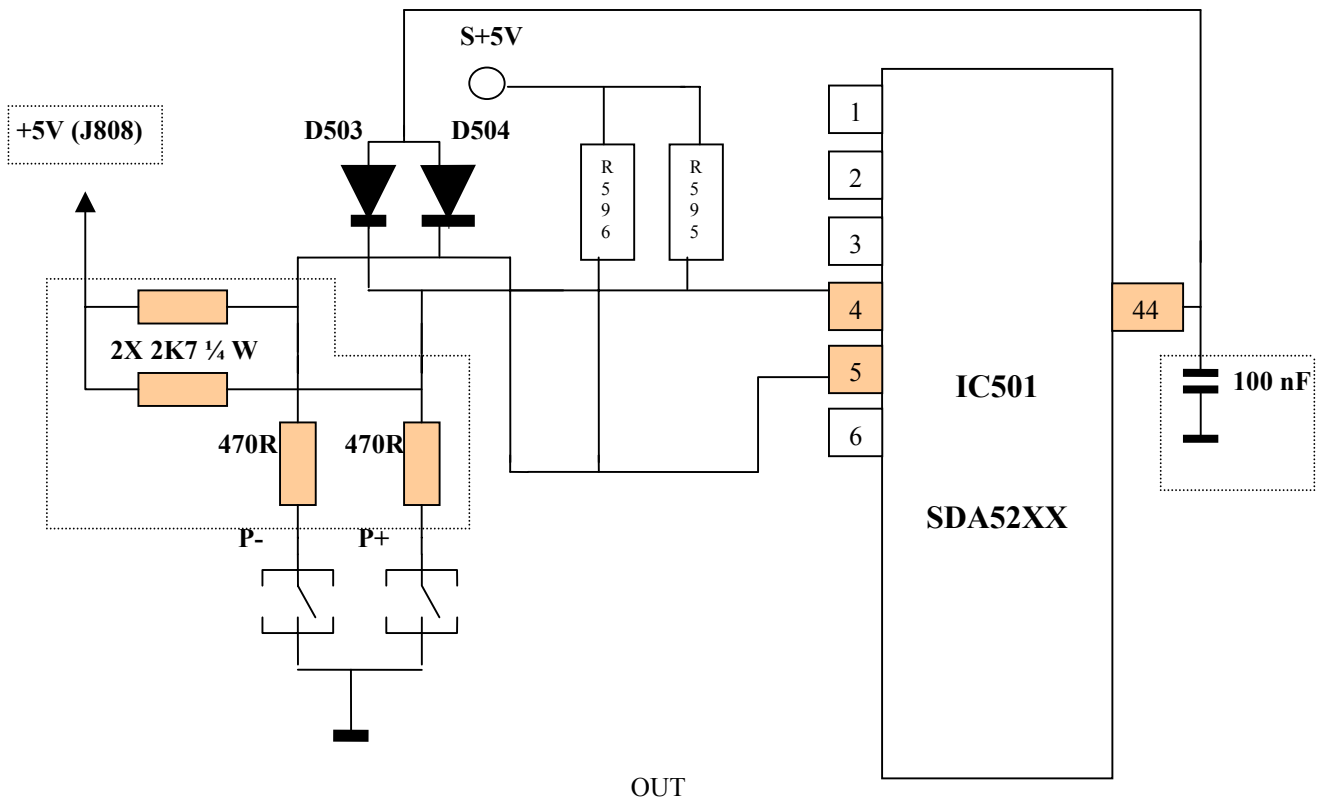
AFFECTED MODELS: ALL MODELS WITH 11AK19 CHASSIS.

NOTE 1: Connect two resistors (RES CF 1/4W 2K7) as shown in the schematic diagram. Solder one of the pins of 2K7 resistors to the cathodes of diodes D503 & D504 and connect the other ends together. Then make a connection (use a 13 cm. length isolated cable) between this common point and the jumper wire J808 (+5V supply) on the component side of the PCB. Fix all the additional components to the PCB by means of some silicon adhesive.

NOTE 2: Add a CAP CER 100 NF/50V between the pin 44 of IC 501 and the ground under the PCB.

START DATE : 30/01/1999

**REASONS OF CHANGE: TO PREVENT SPONTANEOUS SWITCHING-ON IN ST-BY MODE.
APPLY THE BELOW MENTIONED MODIFICATION.**



NO	PCB CODE	VESTEL CODE	COMPONENT NAME	POSITION NUMBER	QUANTITY
1	11AK19	30002583	JUMPER WIRE 0.6 MM.	J126, J127	2

IN

NO	PCB CODE	VESTEL CODE	COMPONENT NAME	POSITION NUMBER	QUANTITY
1	11AK19	30000712	RES CF 1/4W 470R	J126, J127	2
2	11AK19	30000628	RES CF 1/4W 2K7	NOTE 1	2
3	11AK19	30000295	CAP CER 100 NF 50V KB	NOTE 2	1
4	11AK19	30002388	CABLE BLUE 0.6MM (13 CM)	NOTE 1	1

PRODUCTION SUPPORT ENGINEER	PRODUCTION SUPPORT CHIEF	PRODUCTION SUPPORT MANAGER
YILDIRAY BAŞKURT		CELAL ÖZKUL