

# DISASSEMBLY INSTRUCTIONS

## 1. Back Removal

Remove the following screws as shown in the two figures below.

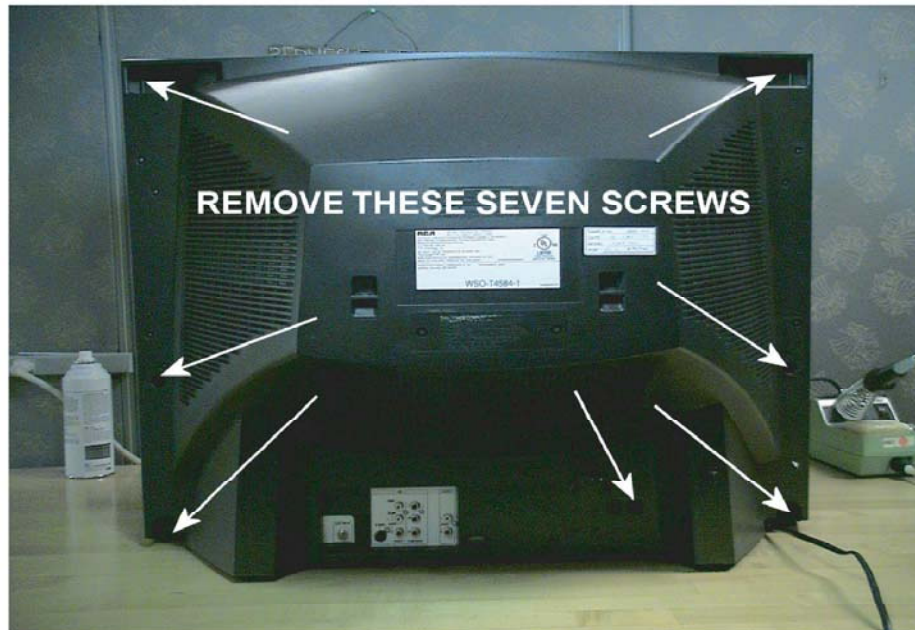


fig 1



fig 2

# DISASSEMBLY INSTRUCTIONS (cont)

## 2. Chassis Service Positions

Slide the Chassis back as shown in figure 3. This will allow servicing and measurements from the top of the Chassis.

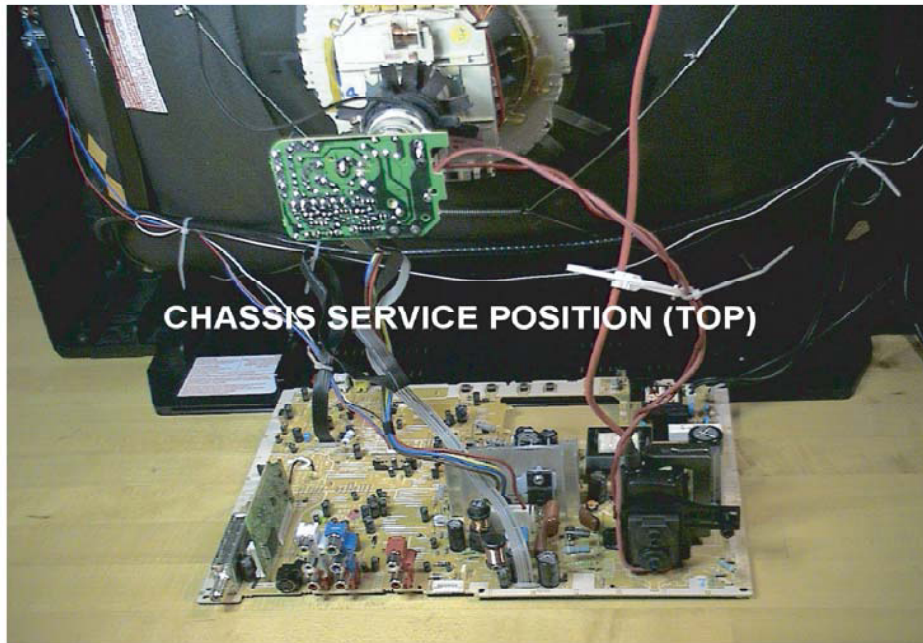


fig 3

Flip the Chassis up as shown in figure 4. This will allow servicing and measurements from the bottom of the Chassis.

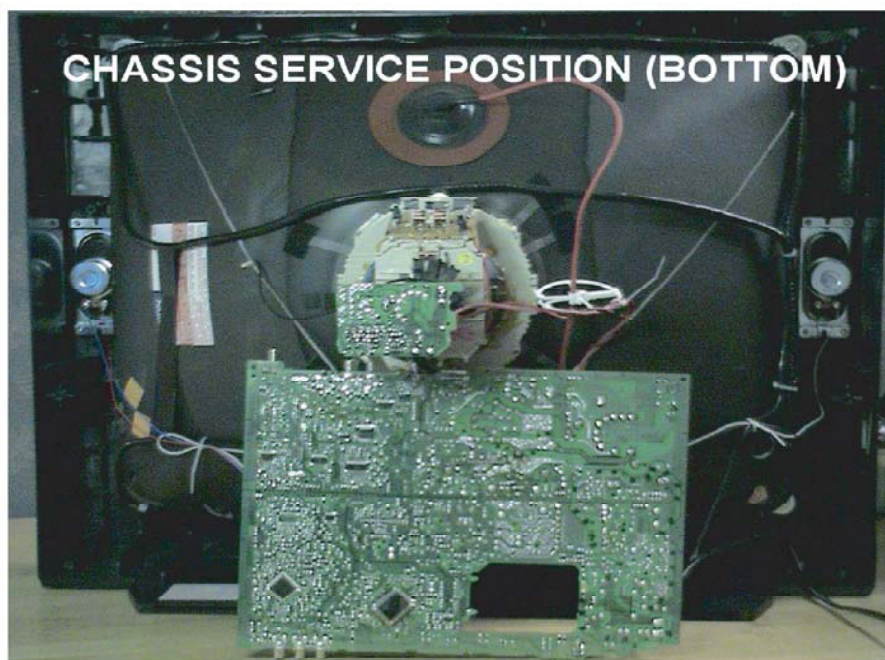


fig 4