

# TAXAN MONITOR

## SCHEMATIC DIAGRAM

RGB vision - I (KS12R101S-U)

RGB vision - II (KS12R202S-U)

### NOTE 1:

- The unit of resistance "ohm" is omitted k=1000 ohms, M=1000k ohms accordingly.
- All resistors are 1/4 watt, unless otherwise noted.
- The tolerance of resistance value is  $\pm 5\%$ , unless otherwise noted.
- All capacitors are in  $\mu\text{FD}$  (in case of below a decimal point), unless otherwise noted p= $\mu\text{FD}$ .
- The tolerance of capacity value except the electrolytic capacitor is  $\pm 10\%$ , unless otherwise noted.
- The rating of capacitors are 50WV, unless otherwise noted.
- The marks of capacitor are as follows:  
 (P) Polyester film type  
 (PP) Polypropylene film type  
 (E) Electrolytic type  
 (T) Tantalum  
 No mark Disc ceramic  
 (C) Cement type  
 (S) Solid type  
 (F) Fusible type  
 No mark Carbon film type
- The marks of resistor are as follows:  
 (M) Metal or Metal oxide film type  
 (C) Cement type  
 (S) Solid type  
 (F) Fusible type  
 No mark Carbon film type

### NOTE 2:

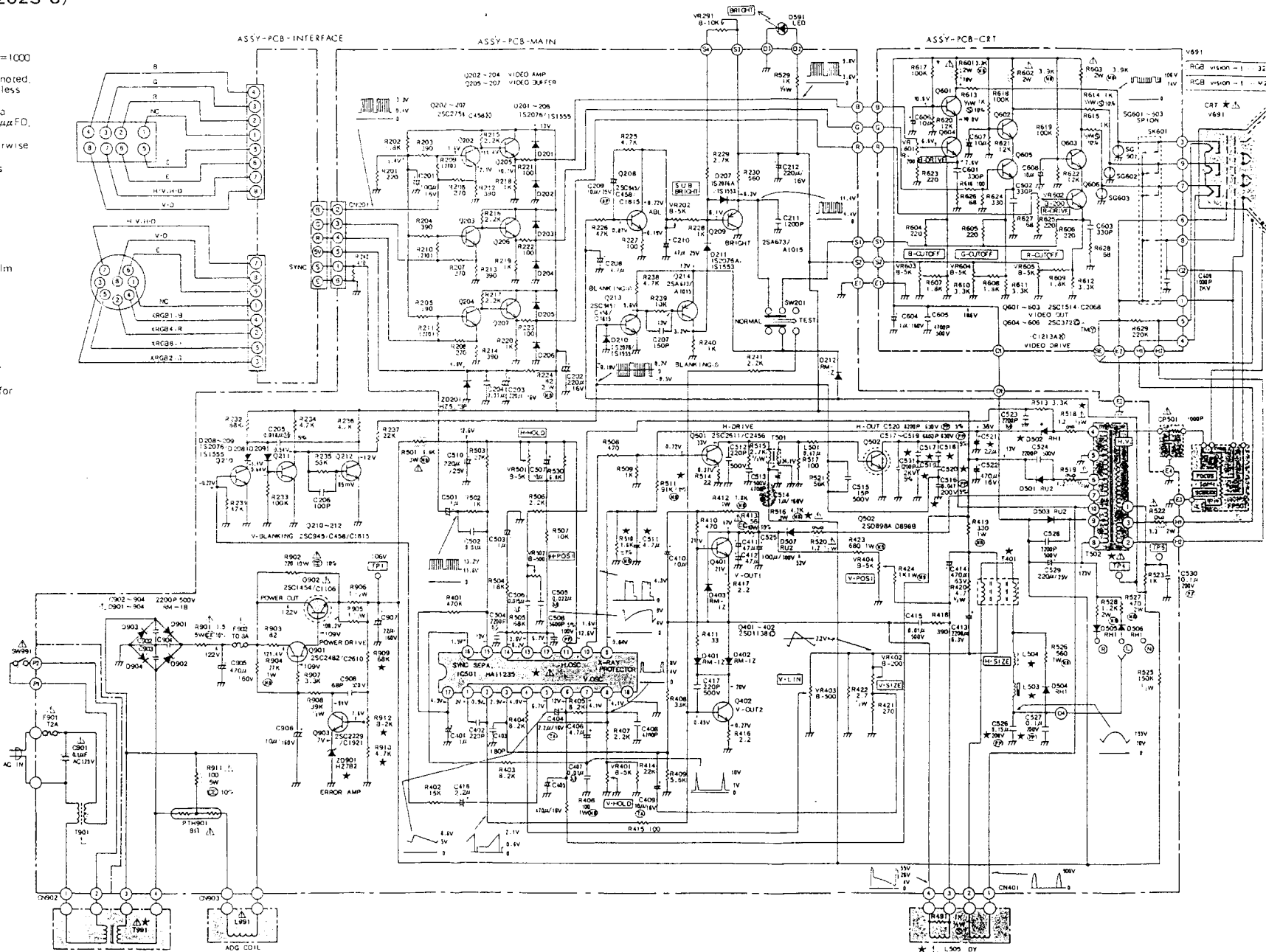
- D.C. voltages are measured from point indicated to chassis ground with VTVM or digital VM.
- Waveforms were taken with controls set for normal picture condition.

**\* SERVICE TECHNICAL WARNING X RAY RADIATION PRECAUTION**  
 THIS PRODUCT CONTAINS CRITICAL ELECTRICAL AND MECHANICAL PARTS ESSENTIAL FOR X RAY RADIATION PROTECTION. FOR REPLACEMENT PURPOSES USE ONLY SAME TYPE PARTS SHOWN IN THE PARTS LIST.

**\* AVERTISSEMENT AU REPARATEUR POUR LES PRECAUTIONS A PRENDRE CONTRE LES RADIATIONS AUX RAYONS X**  
 CET APPAREIL RENFERME DES PIECES ELECTRIQUES ET MECANQUES CRITIQUES ASSURANT UNE PROTECTION SUFFISANTE CONTRE LES RADIATIONS DES RAYONS X. DANS LE CAS D'UN REMPLACEMENT UTILISER UNIQUEMENT LES PIECES SPECIFIEES DANS LE CATALOGUE DE PIECES DETACHEES.

**PRODUCT SAFETY NOTICE**  
 THE PARTS IDENTIFIED BY SHADING AND BY (▲) ON THE SCHEMATIC DIAGRAM ARE SAFETY CRITICAL COMPONENTS. FOR REPLACEMENT PURPOSES USE ONLY SAME TYPE PARTS SHOWN IN THE PARTS LIST.

**NOTICE DE SECURITE**  
 LES PIECES IDENTIFIEES PAR LA ZONE D'OMBRE ET ACCOMPAGNEES DU SYMBOLE (▲) SUR LE SCHEMA DE MONTAGE REPRESENTENT DES COMPOSANTS CRITIQUES DE SECURITE. DANS LE CAS D'UN REMPLACEMENT UTILISER UNIQUEMENT LES PIECES SPECIFIEES DANS LE CATALOGUE DE PIECES DETACHEES.



ONITOR

R101S-U)  
R202S-U)

k=1000

se noted,  
unless

w d  
o= $\mu$ F,  
he  
otherwise  
less

ype

film

or

et for

A-

ER

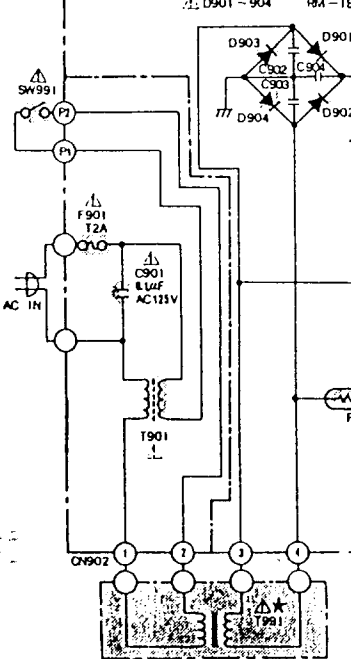
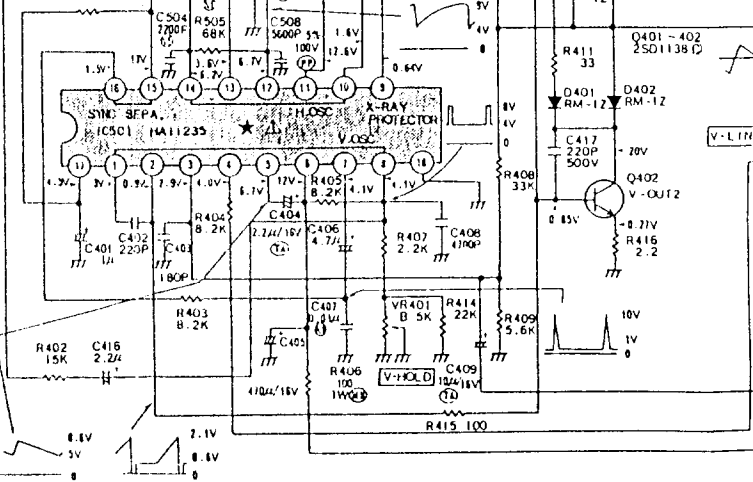
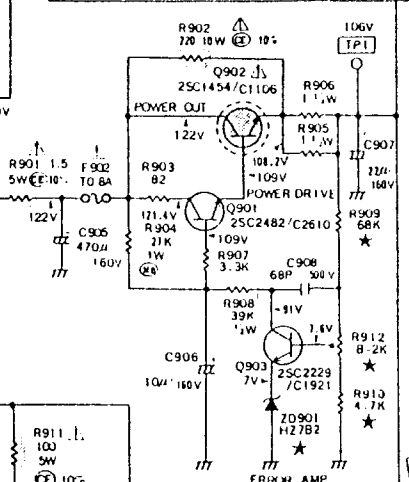
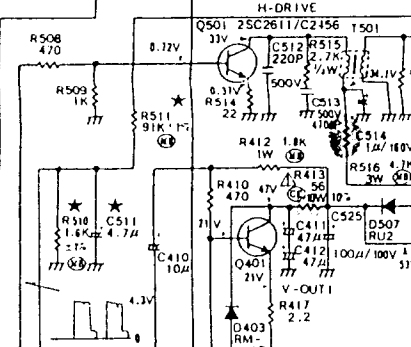
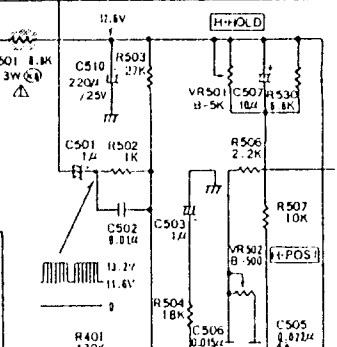
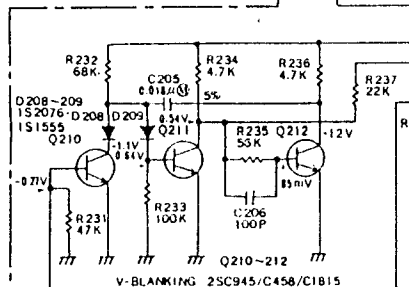
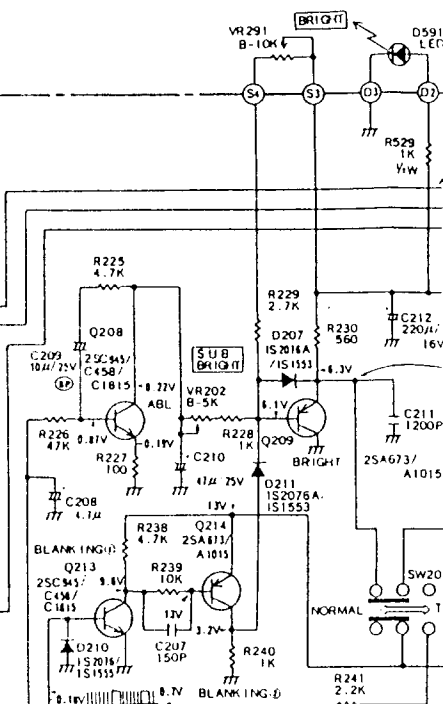
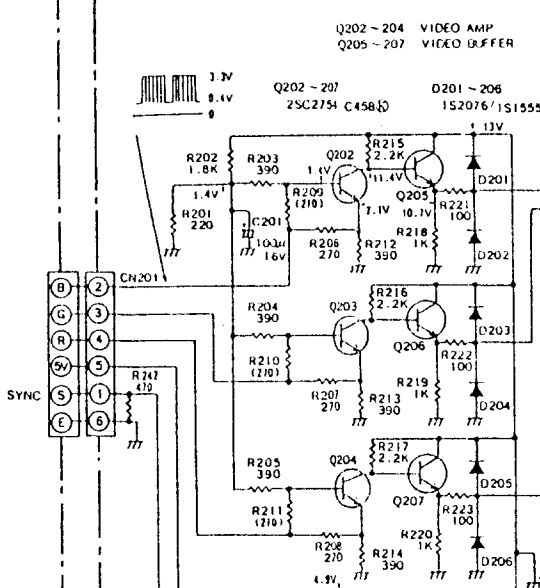
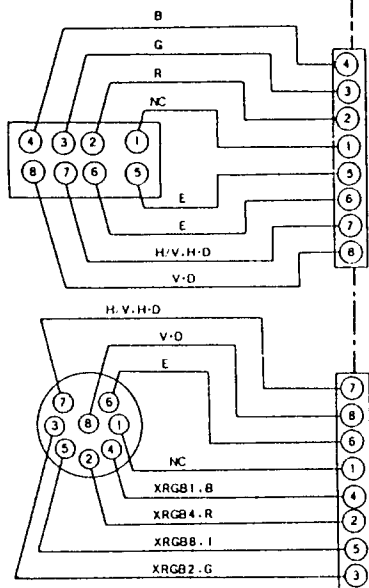
D-

IT

ER

# ASSY-PCB-INTERFACE

# ASSY-PCB-MAIN



# TAXAN MONITOR

## SCHEMATIC DIAGRAM

RGB vision - I (KS12R101S-U)

RGB vision - II (KS12R202S-U)

### NOTE 1:

1. The unit of resistance "ohm" is omitted k=1000 ohms. M=1000k ohms accordingly.
2. All resistors are 1/4 watt, unless otherwise noted.
3. The tolerance of resistance value is  $\pm 5\%$ , unless otherwise noted.
4. All capacitors are in  $\mu\text{FD}$  (in case or below a decimal point), unless otherwise noted p= $\mu\text{FD}$ .
5. The tolerance of capacity value except the electrolytic capacitor is  $\pm 10\%$ , unless otherwise noted.
6. The rating of capacitors are 50WV, unless otherwise noted.
7. The marks of capacitor are as follows:
  - $\text{M}$  ..... Polyester film type
  - $\text{PP}$  ..... Polypropylene film type
  - $\text{E}$  ..... Electrolytic type
  - $\text{Ta}$  ..... Tantalum
  - No mark ..... Disc ceramic
8. The marks of resistor are as follows:
  - $\text{MB}$  ..... Metal or Metal oxide film type
  - $\text{CE}$  ..... Cement type
  - $\text{S}$  ..... Solid type
  - $\text{F}$  ..... Fusible type
  - No mark ..... Carbon film type

### NOTE 2:

1. D.C. voltages are measured from point indicated to chassis ground with V-TVM or digital VM.
2. Waveforms were taken with controls set for normal picture condition.

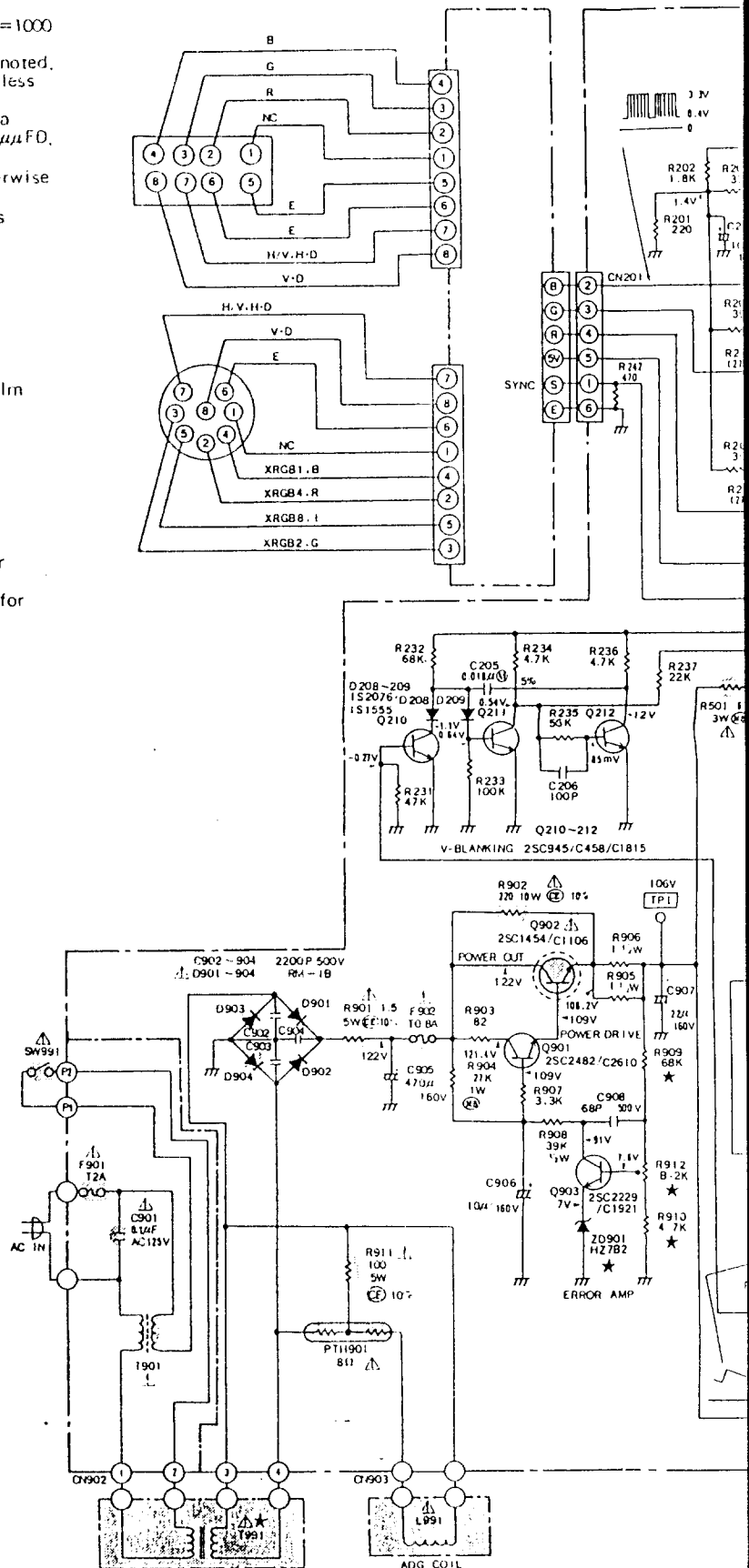
★ SERVICE TECHNICAL WARNING X RAY RADIATION PRECAUTION  
THIS PRODUCT CONTAINS CRITICAL ELECTRICAL AND MECHANICAL PARTS ESSENTIAL FOR X RAY RADIATION PROTECTION FOR REPLACEMENT PURPOSES USE ONLY SAME TYPE PARTS SHOWN IN THE PARTS LIST

★ AVERTISSEMENT AU REPARATEUR POUR LES PRECAUTIONS A PRENDRE CONTRE LES RADIATIONS AUX RAYONS X  
CET APPAREIL RENFERME DES PIECES ELECTRIQUES ET MECANIKES CRITIQUES ASSURANT UNE PROTECTION SUFFISANTE CONTRE LES RADIATIONS DES RAYONS X  
DANS LE CAS D UN REMPLACEMENT UTILISER UNIQUEMENT LES PIECES SPECIFIEES DANS LE CATALOGUE DE PIECES DETACHEES

△ PRODUCT SAFETY NOTICE  
THE PARTS IDENTIFIED BY SHADING AND BY (△) ON THE SCHEMATIC DIAGRAM ARE SAFETY CRITICAL COMPONENTS FOR REPLACEMENT PURPOSES USE ONLY SAME TYPE PARTS SHOWN IN THE PARTS LIST

△ NOTICE DE SECURITE  
LES PIECES IDENTIFIEES PAR LA ZONE D'OMBRE ET ACCOMPAGNEES DU SYMBOLE (△) SUR LE SCHEMA DE MONTAGE REPRESENTENT DES COMPOSANTS CRITIQUES DE SECURITE DANS LE CAS D UN REMPLACEMENT UTILISER UNIQUEMENT LES PIECES SPECIFIEES DANS LE CATALOGUE DE PIECES DETACHEES

### ASSY-PCB-INTERFACE



MAIN

AMP  
O BUFFER

21-206  
52076/1S1555

13V

221  
100

222  
100

223  
100

224  
100

225  
100

226  
100

227  
100

228  
100

229  
100

230  
100

231  
100

232  
100

233  
100

234  
100

235  
100

236  
100

237  
100

238  
100

239  
100

240  
100

241  
100

242  
100

243  
100

244  
100

245  
100

246  
100

247  
100

248  
100

249  
100

250  
100

251  
100

252  
100

253  
100

254  
100

255  
100

256  
100

257  
100

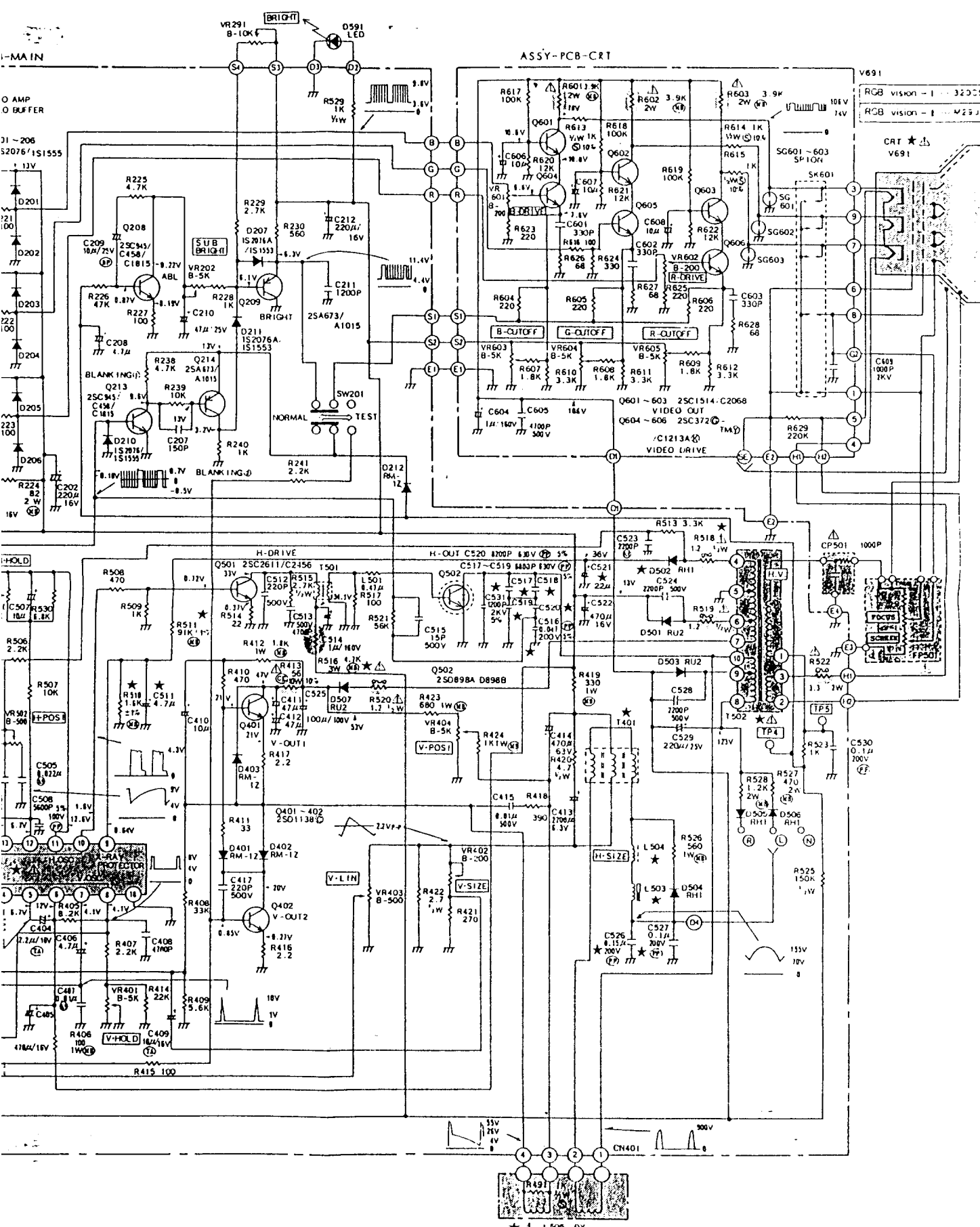
258  
100

ASSY-PCB-CRT

V691

RGB vision - 1 - 3200  
RGB vision - 1 - M25 J

CRT ★  
V691



# TAXAN MONITOR

## SCHEMATIC DIAGRAM

RGB vision - I (KS12R101S-U)

RGB vision - II (KS12R202S-U)

### NOTE 1:

- The unit of resistance "ohm" is omitted k=1000 ohms, M=1000k ohms accordingly.
- All resistors are 1/4 watt, unless otherwise noted.
- The tolerance of resistance value is 5%, unless otherwise noted.
- All capacitors are in  $\mu$ FD (in case or below a decimal point), unless otherwise noted  $\mu$ FD.
- The tolerance of capacity value except the electrolytic capacitor is 10%, unless otherwise noted.
- The rating of capacitors are 50WV, unless otherwise noted.
- The marks of capacitor are as follows:  
 M ..... Polyester film type  
 PP ..... Polypropylene film type  
 E ..... Electrolytic type  
 T ..... Tantalum  
 No mark ..... Disc ceramic
- The marks of resistor are as follows:  
 M ..... Metal or metal oxide film type  
 C ..... Cement type  
 S ..... Solid type  
 F ..... Fusible type  
 No mark ..... Carbon film type

### NOTE 2:

- D.C. voltages are measured from point indicated to chassis ground with VTVM or digital VM.
- Waveforms were taken with controls set for normal picture condition.

**\*SERVICE TECHNICAL WARNING X RAY RADIATION PRECAUTION**  
 THIS PRODUCT CONTAINS CRITICAL ELECTRICAL AND MECHANICAL PARTS ESSENTIAL FOR X RAY RADIATION PROTECTION FOR REPLACEMENT PURPOSES USE ONLY SAME TYPE PARTS SHOWN IN THE PARTS LIST

**\*AVERTISSEMENT AU REPARATEUR POUR LES PRECAUTIONS A PRENDRE CONTRE LES RADIATIONS AUX RAYONS X**  
 CET APPAREIL RENFERME DES PIECES ELECTRIQUES ET MECANIQUES CRITIQUES ASSURANT UNE PROTECTION SUFFISANTE CONTRE LES RADIATIONS DES RAYONS X DANS LE CAS D'UN REMPLACEMENT UTILISER UNIQUEMENT LES PIECES SPECIFIEES DANS LE CATALOGUE DE PIECES DETACHEES

**PRODUCT SAFETY NOTICE**  
 THE PARTS IDENTIFIED BY SHADING AND BY (Δ) ON THE SCHEMATIC DIAGRAM ARE SAFETY CRITICAL COMPONENTS FOR REPLACEMENT PURPOSES USE ONLY SAME TYPE PARTS SHOWN IN THE PARTS LIST

**NOTICE DE SECURITE**  
 LES PIECES IDENTIFIEES PAR LA ZONE D'OMBRE ET ACCOMPAGNEES DU SYMBOLE (Δ) SUR LE SCHEMA DE MONTAGE REPRESENTENT DES COMPOSANTS CRITIQUES DE SECURITE DANS LE CAS D'UN REMPLACEMENT UTILISER UNIQUEMENT LES PIECES SPECIFIEES DANS LE CATALOGUE DE PIECES DETACHEES

