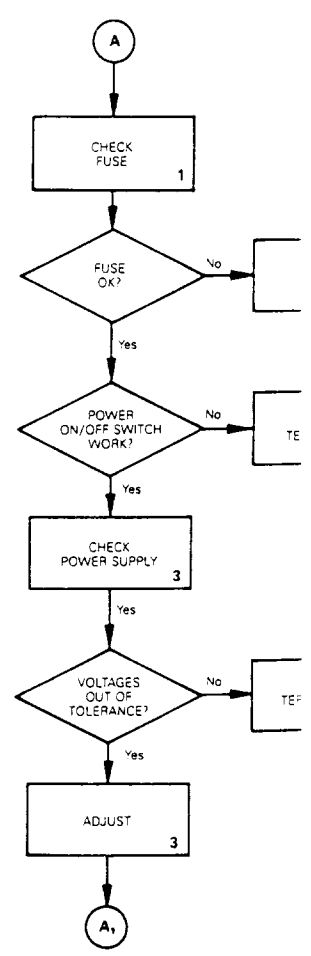
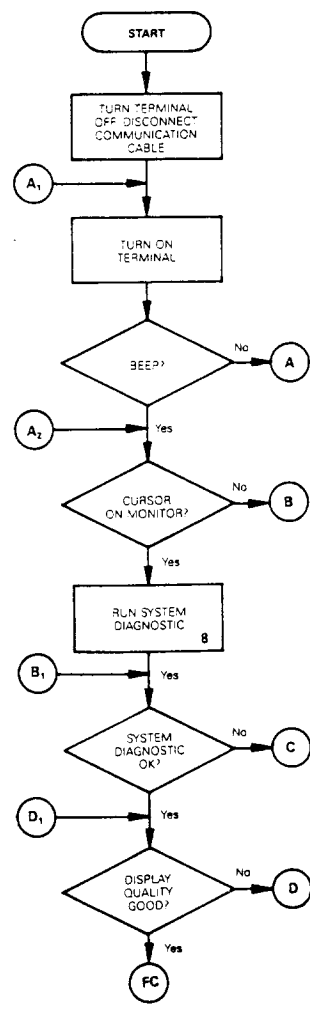
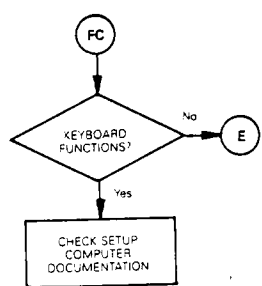


For Service Manuals  
contact  
**MAURITRON SERVICES**  
8 Cherry Tree Road, Chinnor  
Oxfordshire, OX9 4QY.  
Tel (01844) 351694  
Fax (01844) 352554

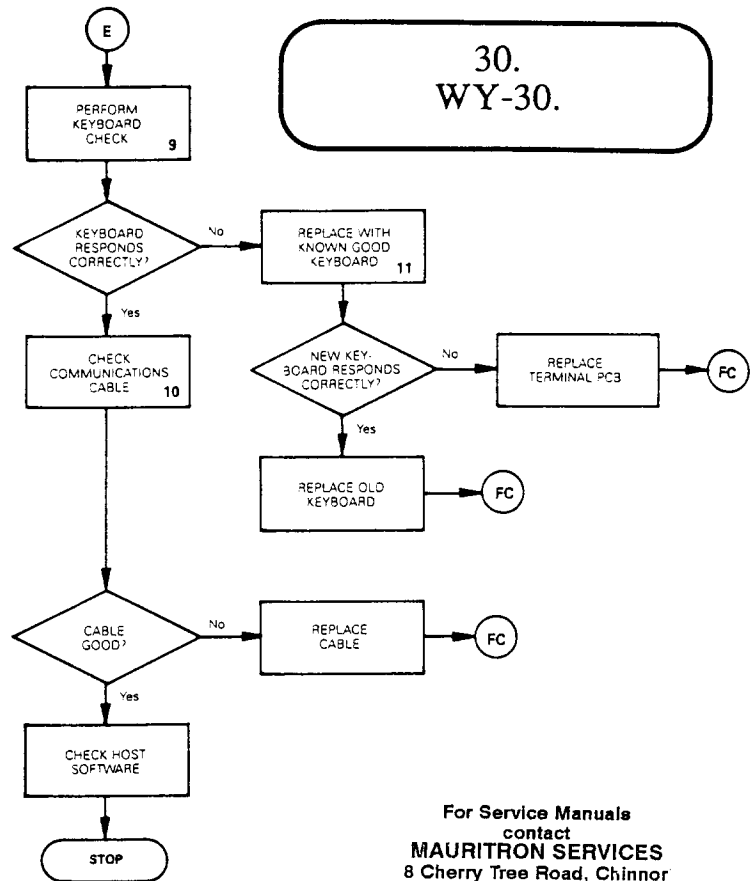


# WYSE

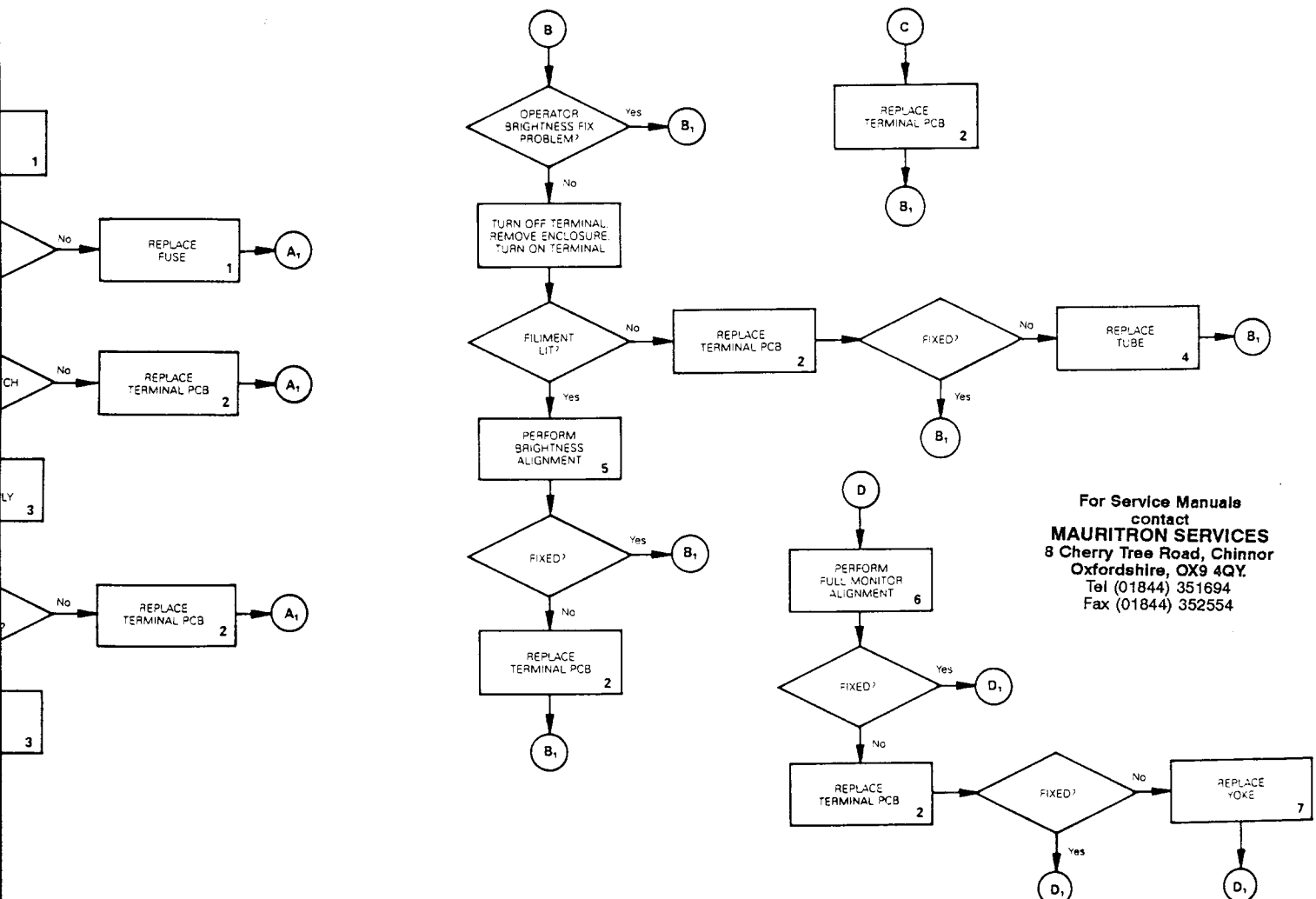
\* NOTE: WY-30 KEYBOARD ID IS 01

For Service Manuals  
contact  
**MAURITRON SERVICES**  
8 Cherry Tree Road, Chinnor  
Oxfordshire, OX9 4QY.  
Tel (01844) 351694  
Fax (01844) 352554

30.  
WY-30.



For Service Manuals  
contact  
**MAURITRON SERVICES**  
8 Cherry Tree Road, Chinnor  
Oxfordshire, OX9 4QY.  
Tel (01844) 351694  
Fax (01844) 352554



For Service Manuals  
contact  
**MAURITRON SERVICES**  
8 Cherry Tree Road, Chinnor  
Oxfordshire, OX9 4QY.  
Tel (01844) 351694  
Fax (01844) 352554



2

# WYSE

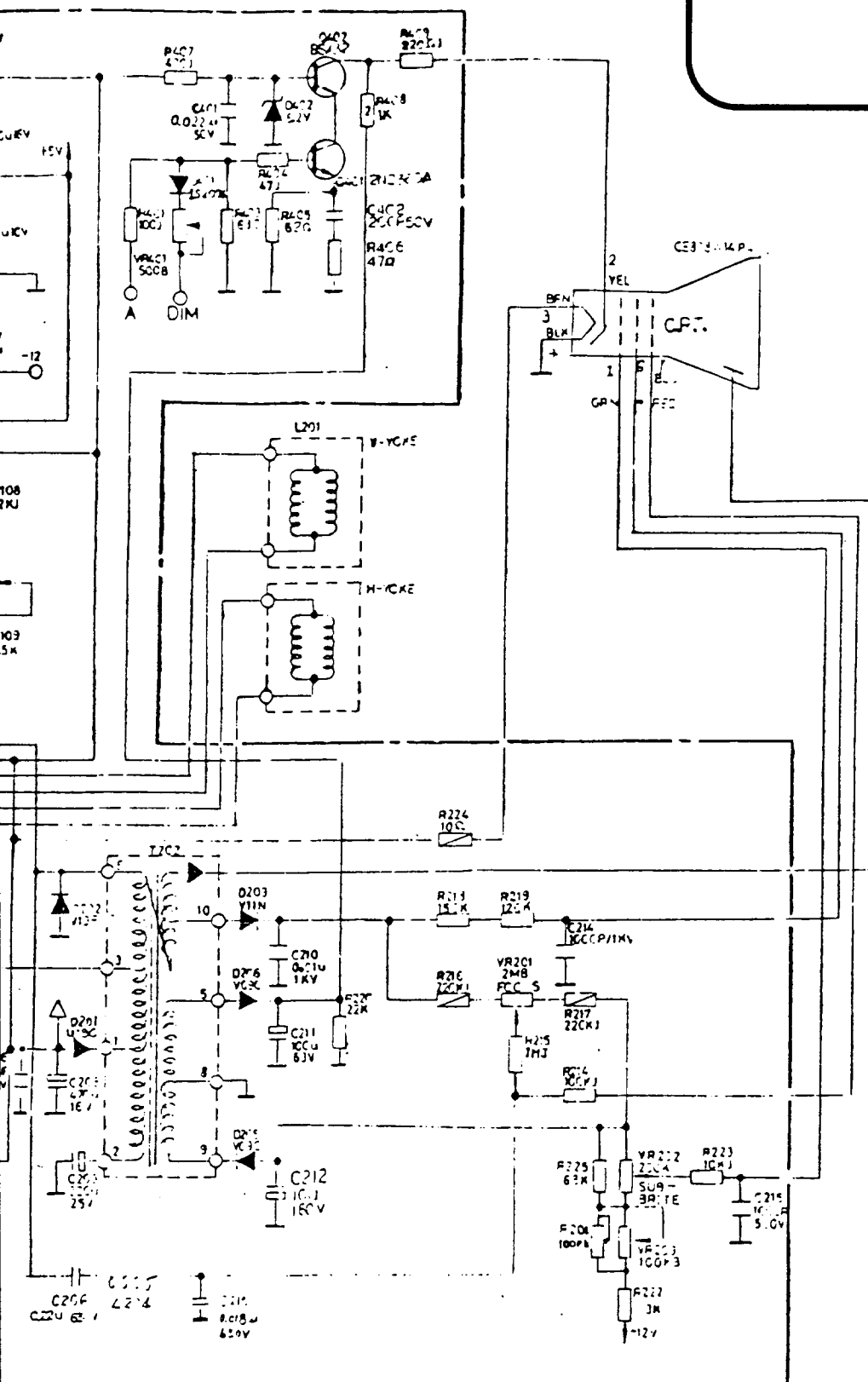
## 30. WY-30.

### Troubleshooting Quick Reference Guide

Symptom	Possible Problem Area(s)
No display	Terminal PCB, CRT/yoke assembly
Poor display quality	Adjustments, terminal PCB
Wrong size display	Adjustments, terminal PCB, yoke
Crooked	
Too bright	
Not in focus	
Fails self-test	Terminal PCB
Fails diagnostic test	Terminal PCB, wrong diagnostic setup, faulty test connectors
Inoperative keys	Keyboard, terminal PCB, keyboard cable
Can't communicate with computer	Setup parameters, terminal PCB, communication cable
Letters or error codes on the screen	Terminal PCB
Touch/tilt doesn't respond correctly	Touch/tilt screw tension

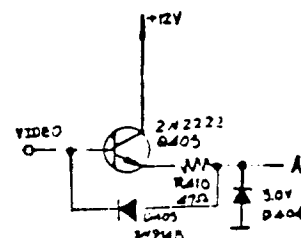
For Service Manuals  
contact  
**MAURITRON SERVICES**  
8 Cherry Tree Road, Chinnor  
Oxfordshire, OX9 4QY.  
Tel (01844) 351694  
Fax (01844) 352554



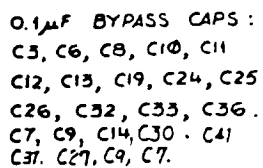


30.  
WY-30.

**For Service Manuals  
contact  
MAURITRON SERVICES  
8 Cherry Tree Road, Chinnor  
Oxfordshire, OX9 4QY.  
Tel (01844) 351694  
Fax (01844) 352554**



**For Service Manuals  
contact  
MAURITRON SERVICES  
8 Cherry Tree Road, Chinnor  
Oxfordshire, OX9 4QY.  
Tel (01844) 351694  
Fax (01844) 352554**



A hand-drawn diagram showing a tree structure. The root node has three children. Below the tree, there is a separate node with a self-loop.

IS FRAME GROUND  
IS SIGNAL GROUND

