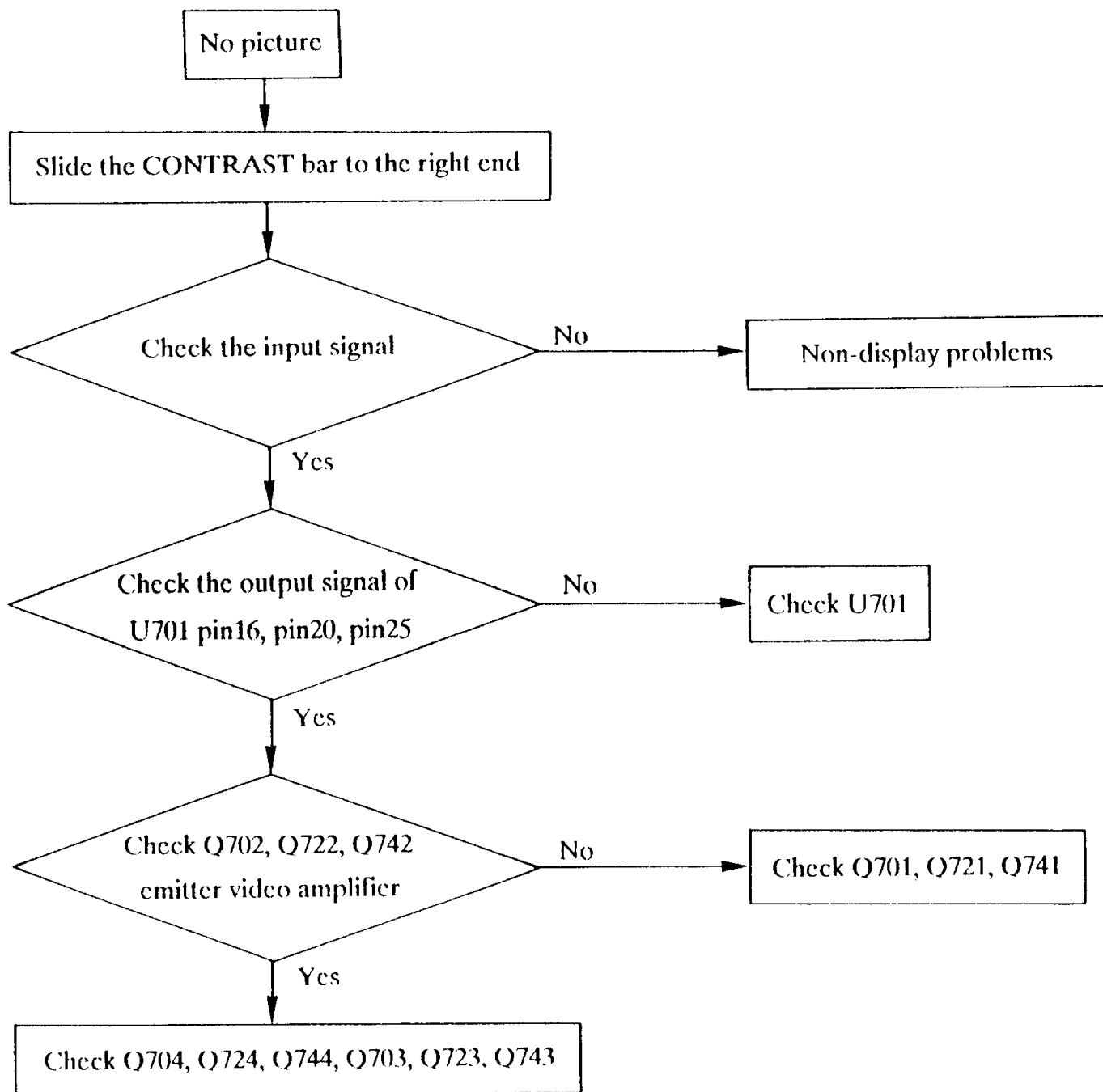


**For Service Manuals  
contact  
MAURITRON SERVICES**  
8 Cherry Tree Road, Chinnor  
Oxfordshire, OX9 4QY.  
Tel (01844) 351694  
Fax (01844) 352554



For Service Manuals  
contact  
**MAURITRON SERVICES**  
8 Cherry Tree Road, Chinnor  
Oxfordshire, OX9 4QY.  
Tel (01844) 351694.  
Fax (01844) 352554

Screen can't be focused

Adjust focus variable resistor --  
CRT G4 voltage from 5-7KV

No

Check high voltage circuit

Yes

Focus control adjusted correctly

Yes

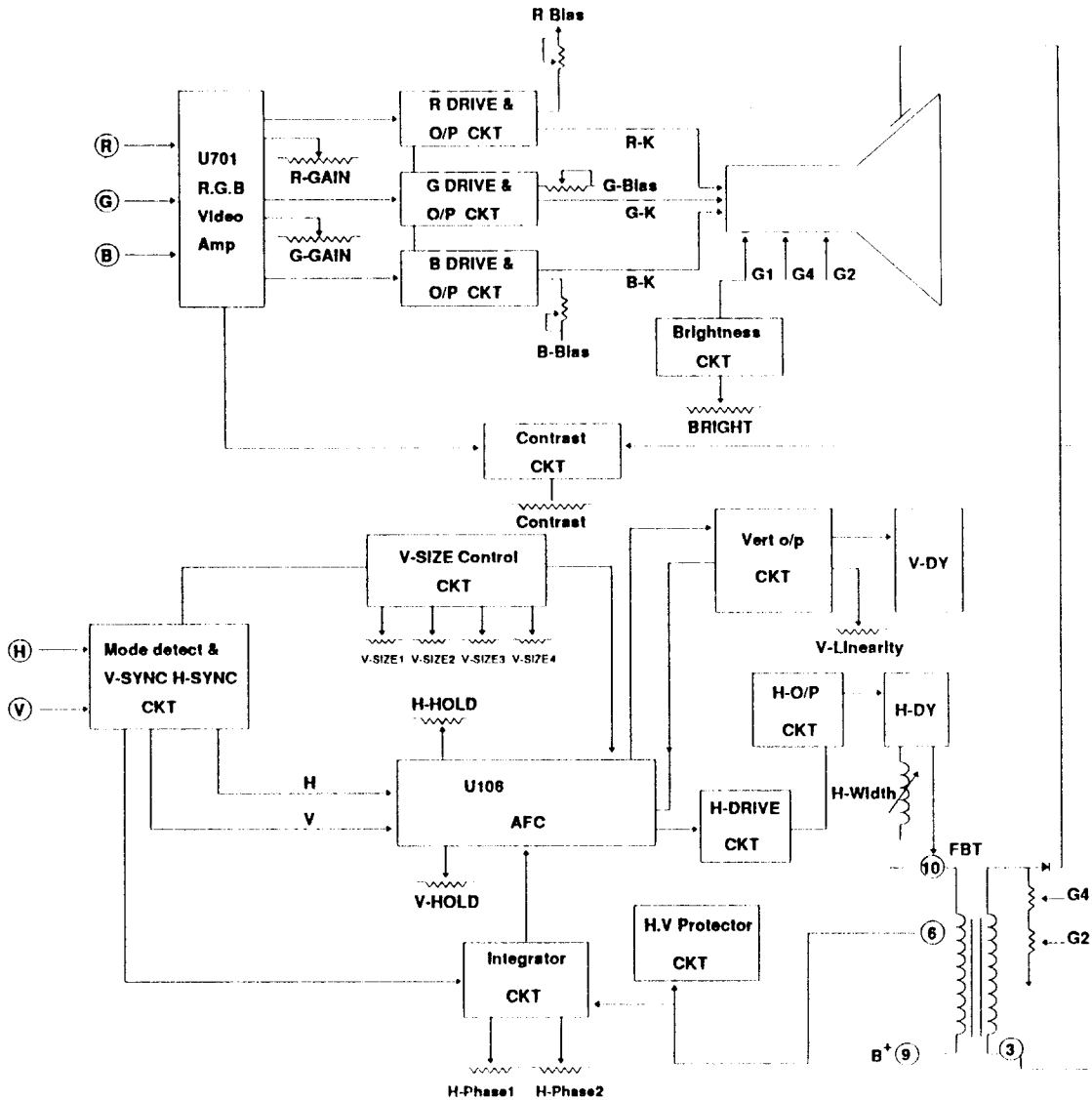
Replace CRT

No

Adjust focus control

For Service Manuals  
contact  
**MAURITRON SERVICES**  
8 Cherry Tree Road, Chinnor  
Oxfordshire, OX9 4QY.  
Tel (01844) 351694  
Fax (01844) 352554

# 10. BLOCK DIAGRAMS



## 8. CONTROLS AND ADJUSTMENTS

Turn VR702, VR722, VR742 clockwise to the end and the other variable resistors to the mid-position. Warm up for at least thirty minutes.

### 1. B<sup>+</sup> ADJUSTMENT:

- a. Apply 31.5 KHz cross hatch pattern.
- b. Adjust VR901 to obtain 90V DC at D502 cathode end.

### 2. CUT-OFF (G1) VOLTAGE ADJUSTMENT:

- a. Adjust the BRIGHTNESS controller to the right end.
- b. Adjust VR501 (SUB-BRIGHTNESS) to obtain -20 volts at G1 point.

### 3. H FREE RUNNING:

- a. Make one end of R304 termination short.
- b. Apply 35KHz full white pattern.
- c. Adjust VR301 (H-HOLD) to obtain the best H FREE RUNNING.

For Service Manuals  
contact  
**MAURITRON SERVICES**  
8 Cherry Tree Road, Chinnor  
Oxfordshire, OX9 4QY.  
Tel (01844) 351694  
Fax (01844) 352554

### 4. H-CENTER ADJUSTMENT:

- a. Apply 31.5 KHz cross hatch pattern.
- b. Adjust G2 screen variable resistor to make raster visible.
- c. Adjust VR503 (H-CENTER) to put the raster on the center of the screen.

## **5. H-PHASE ADJUSTMENT:**

- a. Apply 31.5KHz cross hatch pattern.
- b. Adjust VR303 (H-PHASE) until the the image is on the center of the raster.

## **6. H-WIDTH ADJUSTMENT:**

- a. Apply 31.5KHz cross hatch pattern.
- b. Adjust L402 to obtain 240mm horizontal width.

**For Service Manuals  
contact  
MAURITRON SERVICES  
8 Cherry Tree Road, Chinnor  
Oxfordshire, OX9 4QY.  
Tel (01844) 351694  
Fax (01844) 352554**

## **7. V-CENTER ADJUSTMENT:**

- a. Apply 31.5KHz cross hatch pattern.
- b. Adjust VR206 (V-CENTER) to place the image on the center of the screen.

## **8. V-LINEARITY ADJUSTMENT:**

- a. Apply 31.5KHz cross hatch pattern.
- b. Adjust VR204 (V-LIN) to meet the linearity specifications.

## **9. V-SIZE ADJUSTMENT:**

- a. Apply VGA cross hatch pattern in 480 mode, then adjust VR201 to get 180mm vertical size.
- b. Apply VGA cross hatch pattern in 400 mode, then adjust VR203 to get 180mm vertical size.
- c. Apply VGA cross hatch pattern in 350 mode, then adjust VR202 to get 180mm vertical size.

## **10. PIN-CUSHION ADJUSTMENT:**

- a. Apply 31.5KHz cross hatch patten.
- b. Adjust VR401 (PIN-GAIN) and VR402 (PIN-PHASE) to meet the pincushion's specifications.

## **11. HV PROTECTION ADJUSTMENT:**

- a. Apply 31.5KHz cross hatch patten.
- b. Adjust VR502 (X-RAY) to obtain 3.7V DC at D302 Cathode end.

For Service Manuals  
contact  
**MAURITRON SERVICES**  
8 Cherry Tree Road, Chinnor  
Oxfordshire, OX9 4QY.  
Tel (01844) 351694  
Fax (01844) 352554

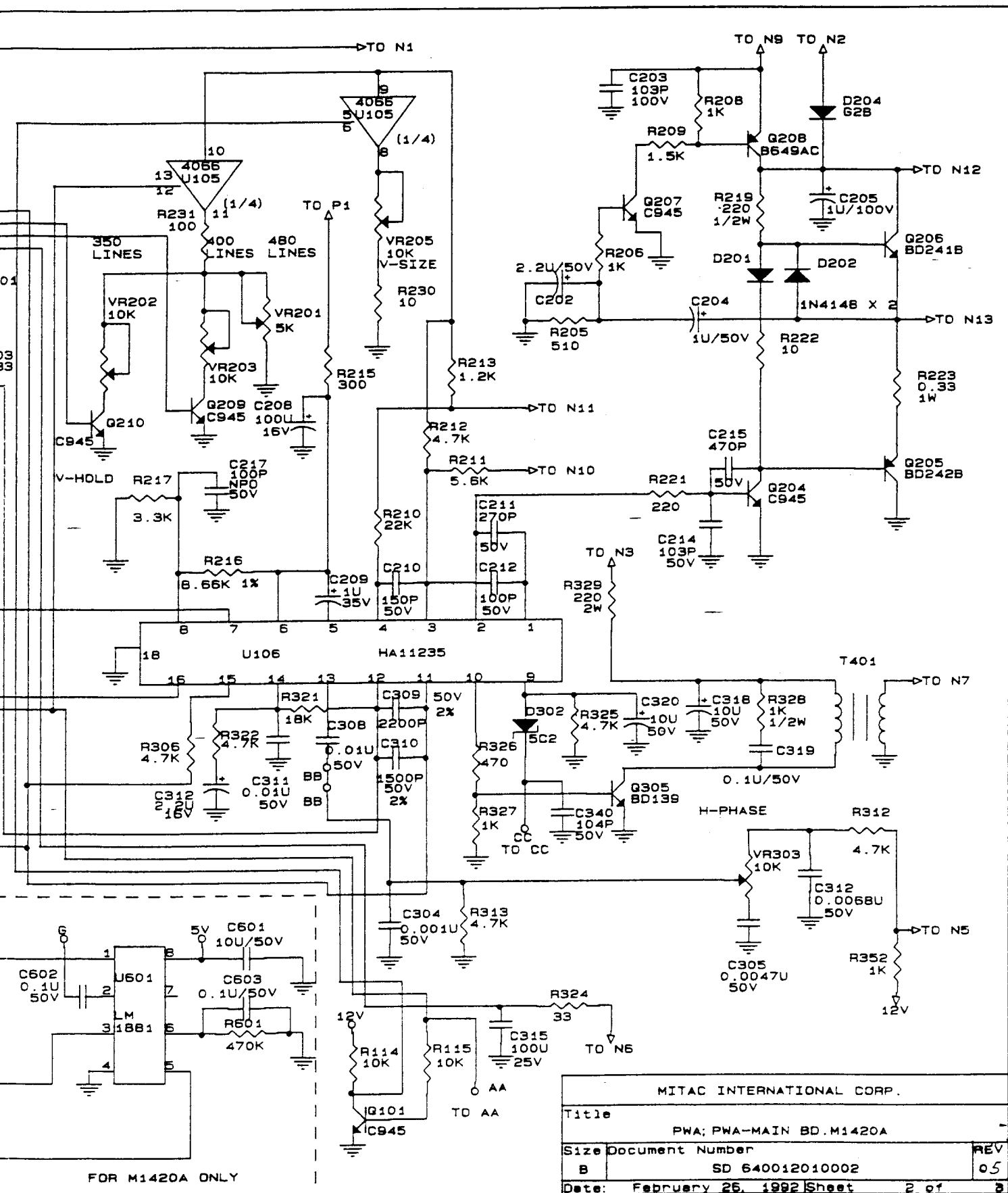
## **12. BLACK LEVEL ADJUSTMENT:**

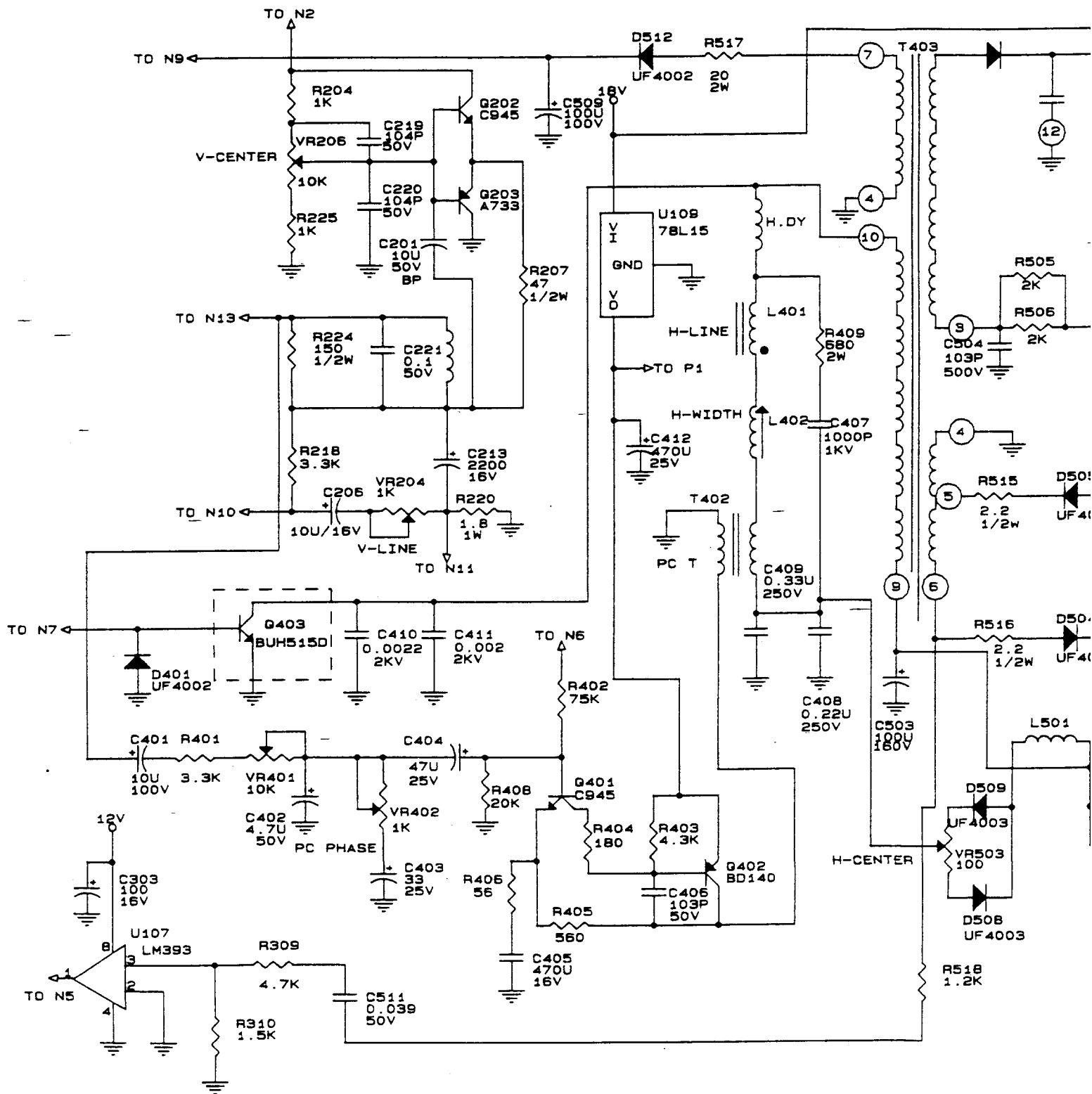
- a. Apply raster pattern only.
- b. Adjust the BRIGHTNESS controller to the right end and the CONTRAST controller to the left end.
- c. Adjust G2 variable resistor to obtain 0.8~1.2FL on the screen.
- d. Keep the original raster colors and adjust VR702, VR722, VR742 to obtain  $0.240 \pm 0.02 / 0.250 \pm 0.02$  X/Y coordinates.

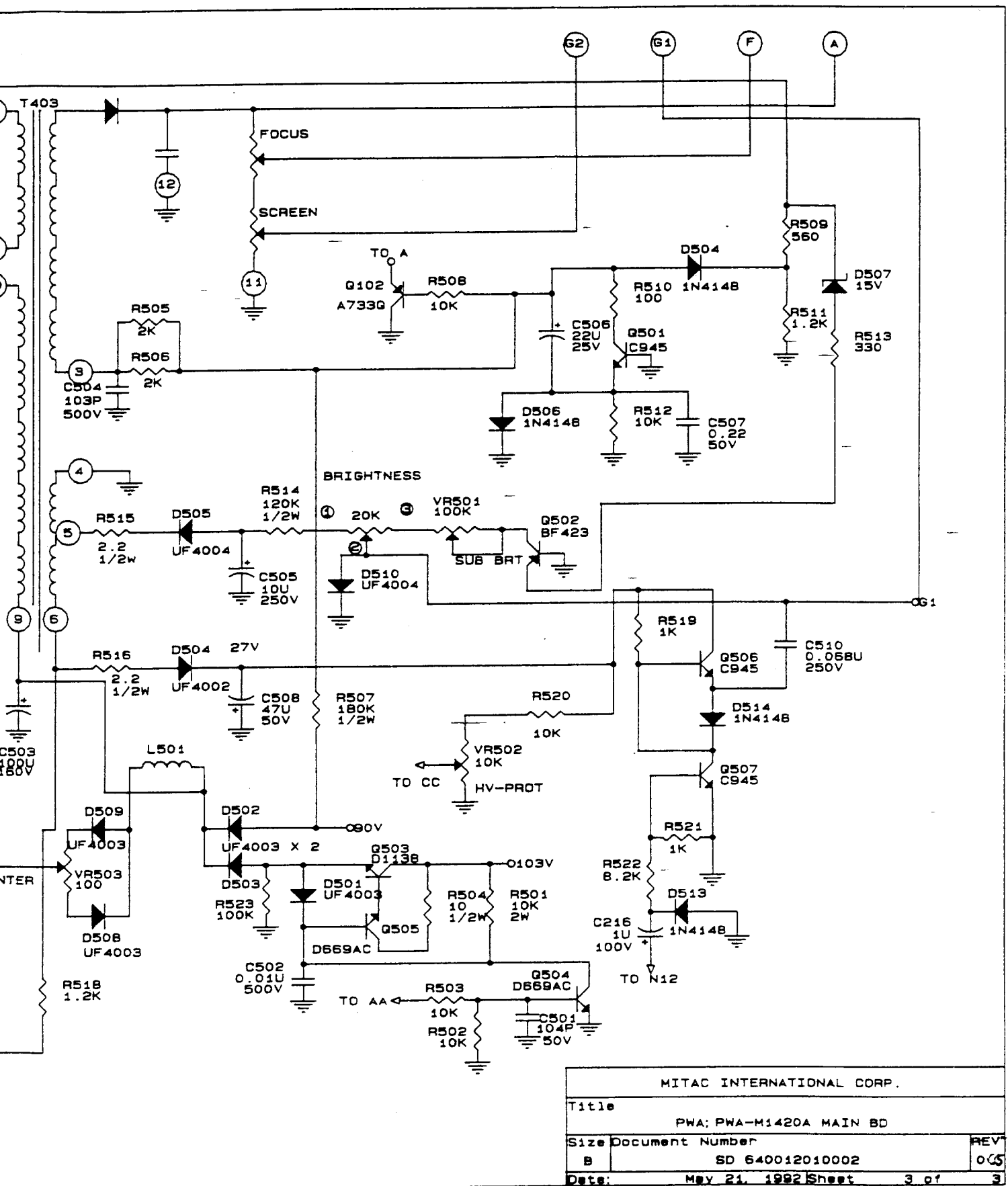
## **13. WHITE BALANCE:**

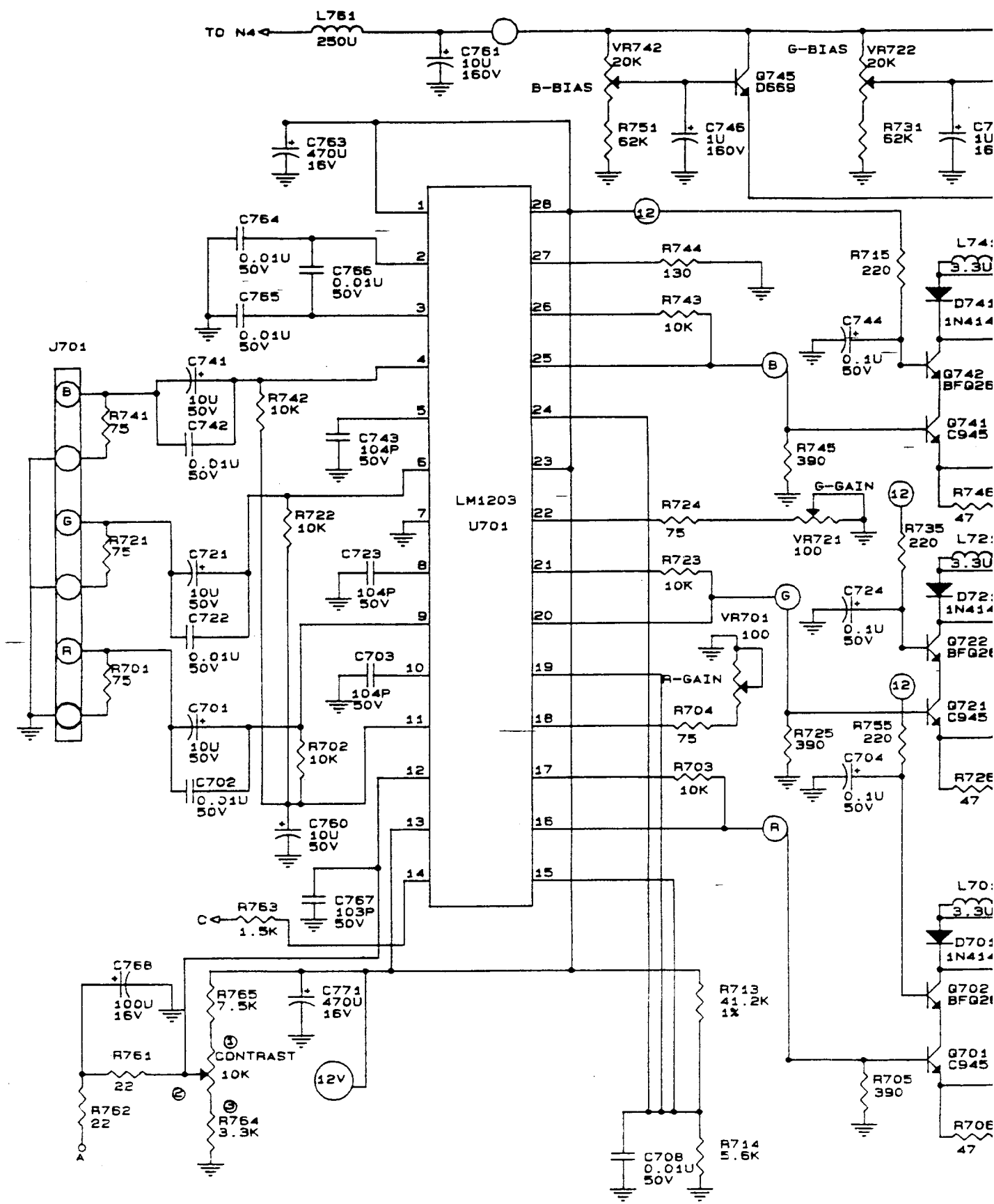
- a. Apply 31.5KHz full white pattern.
- b. Adjust the BRIGHTNESS controller to the mid-position and the CONTRAST controller to the right end.
- c. Adjust VR701, VR721 to obtain 0.281/0.311 X/Y coordinates.
- d. Adjust the CONTRAST controller to get  $Y = 3.5FL$ .
- e. Adjust VR702, VR742 to get 0.281/0.311 X/Y coordinates.

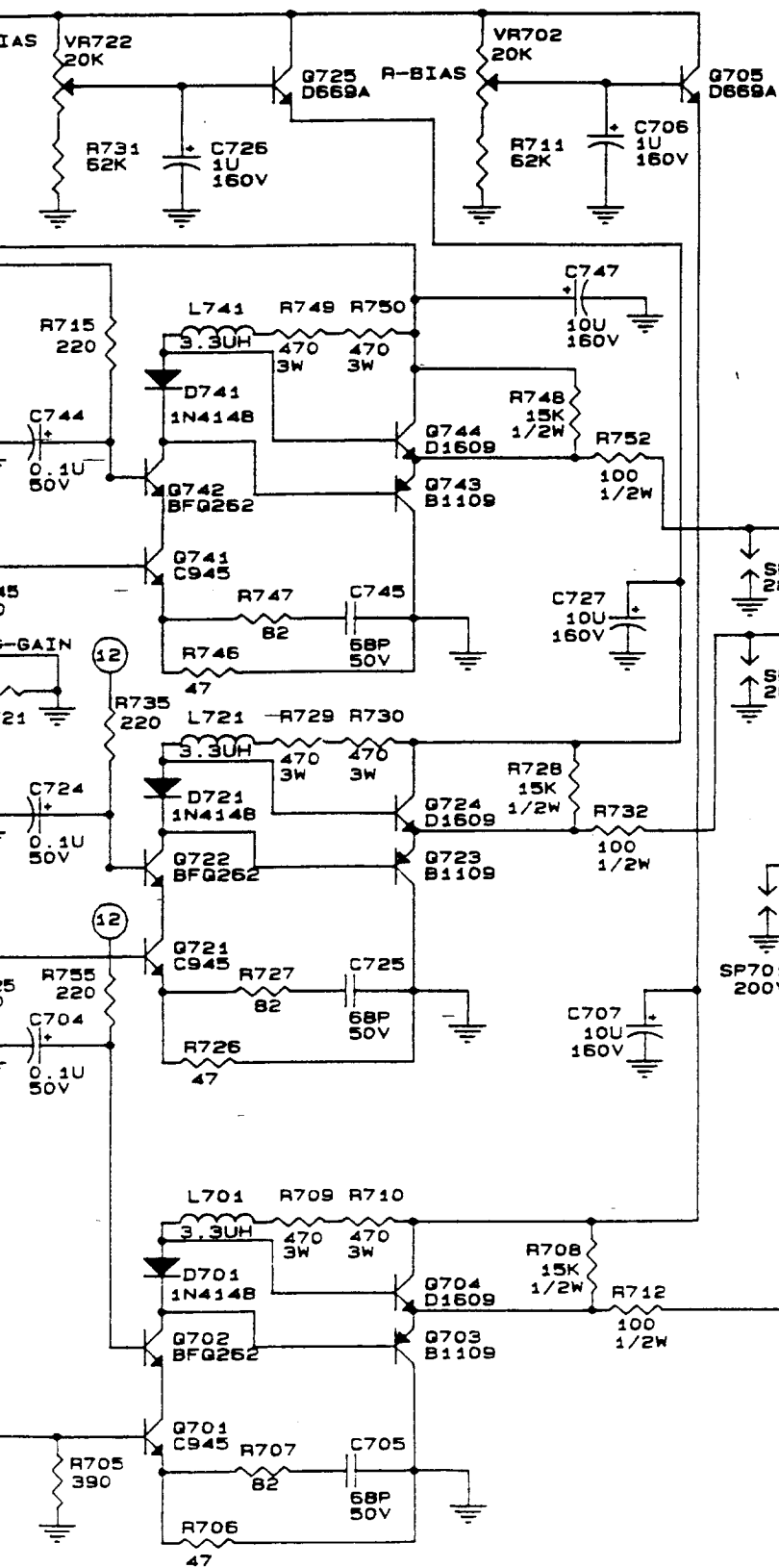









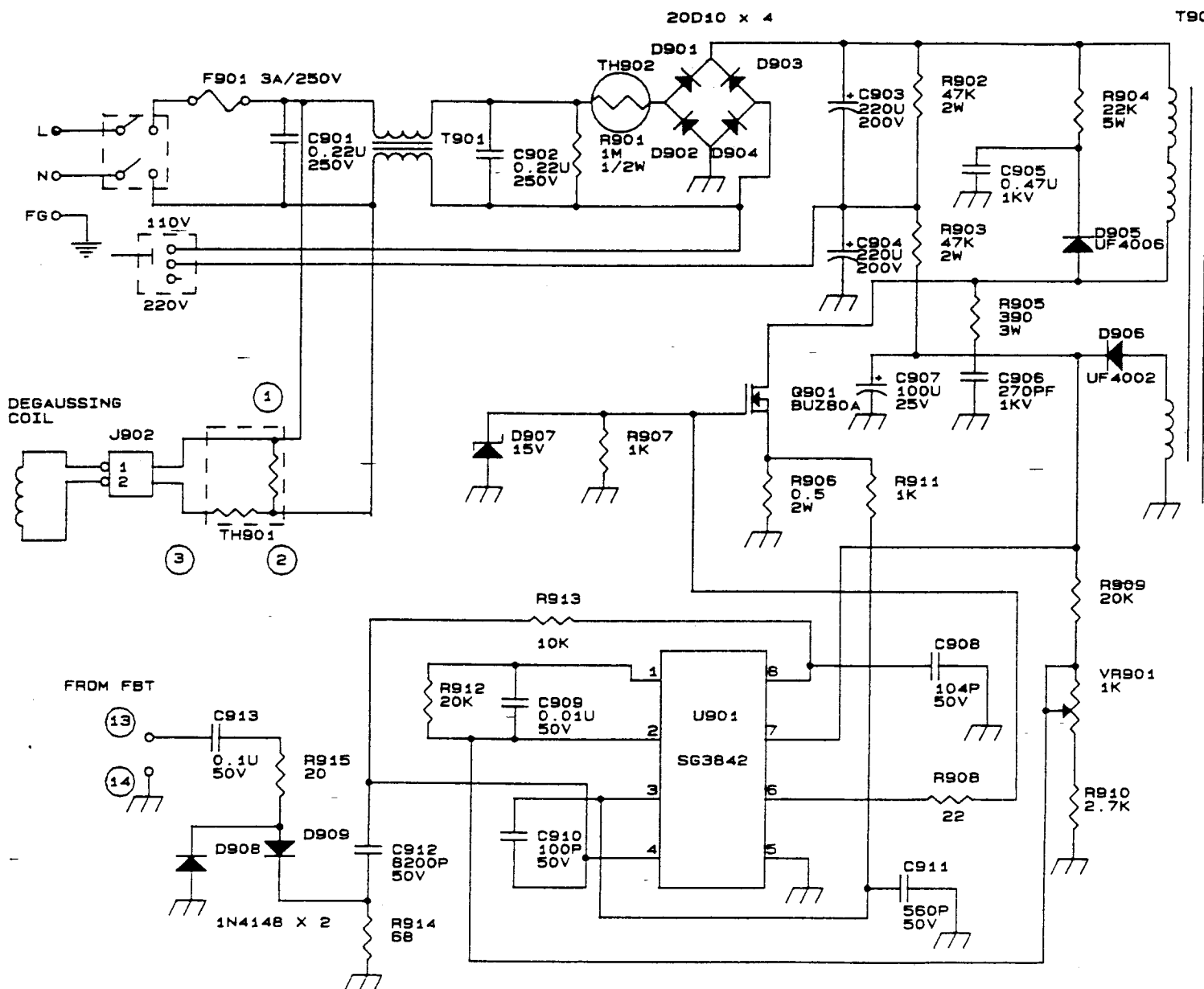




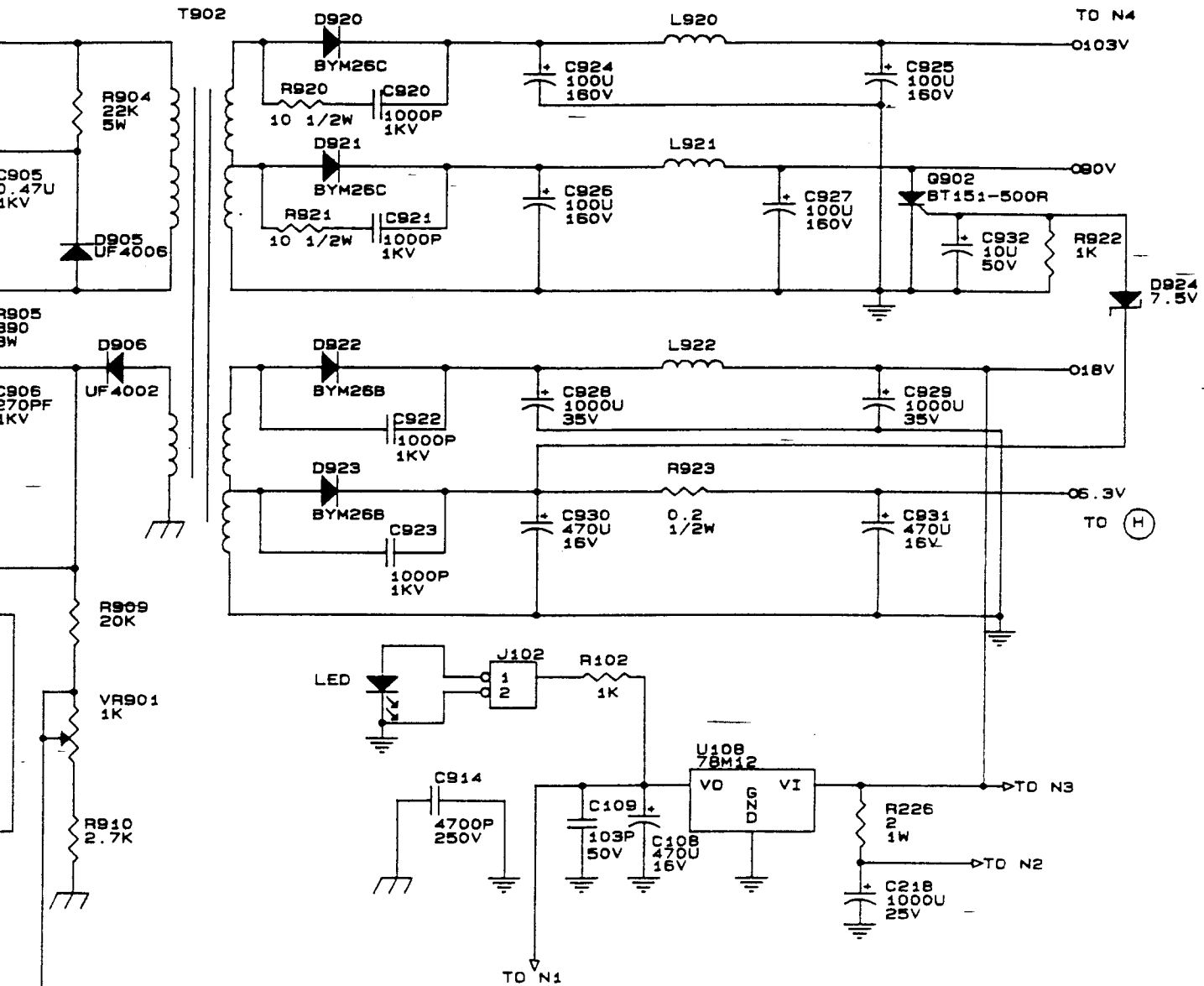
**WARNING:**

REPLACEMENT PARTS WHICH HAVE SPECIAL SAFETY CHARACTERISTICS ARE IDENTIFIED BY  SHOWING ON THE SCHEMATICS. REPLACE THESE CRITICAL COMPONENTS WITH RECOMMENDED REPLACEMENT PARTS. DON'T DEGRADE THE SAFETY OF THE SET THROUGH IMPROPER SERVICING.

MITAC INTERNATIONAL CORP.		
Title		
PWA: PWA-CRT BD, MC14A		
Size	Document Number	REV
B	SD 640012010001	2.0
Date:	March 20, 1990	Sheet 1 of 1

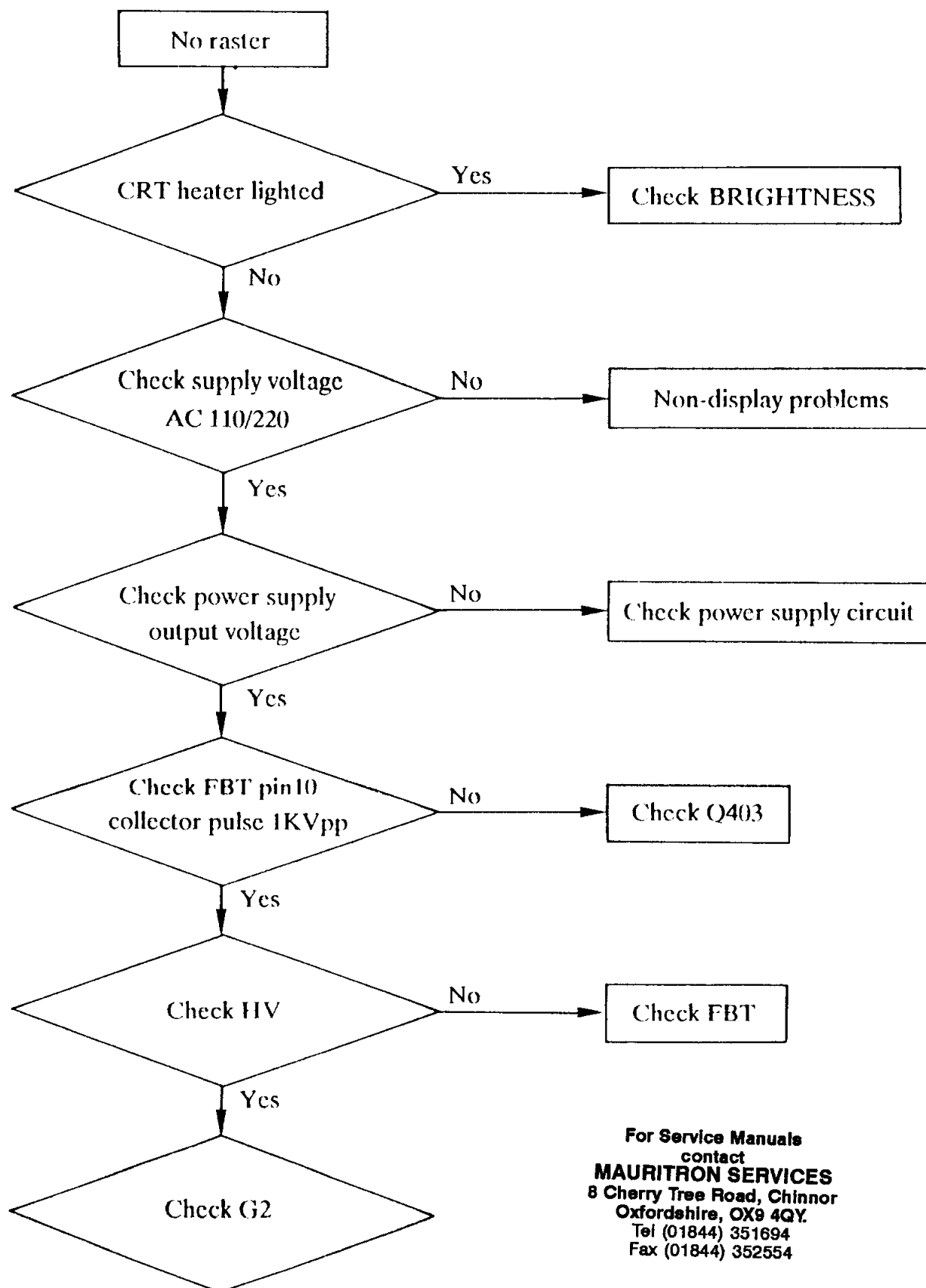


For Service Manuals  
contact  
**MAURITRON SERVICES**  
8 Cherry Tree Road, Chinnor  
Oxfordshire, OX9 4QY  
Tel (01844) 351894  
Fax (01844) 352554



MITAC INTERNATIONAL CORP.		
Title		
PWA; PWA-MAIN BD. M1420A		
Size	Document Number	REV
B	640012010002	05
Date:	May 7, 1992	Sheet 1 of 3

## 9. TROUBLESHOOTING



For Service Manuals  
contact  
**MAURITRON SERVICES**  
8 Cherry Tree Road, Chinnor  
Oxfordshire, OX9 4QY.  
Tel (01844) 351694  
Fax (01844) 352554