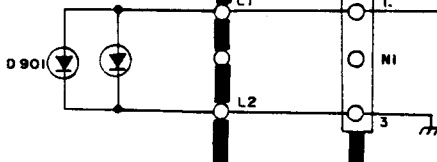


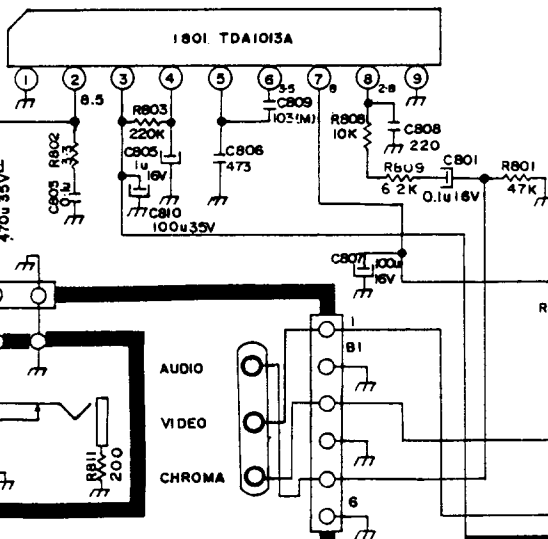
1084 S-D.
A-16-2 Chassis.
CMC-14TPRI.
PN-314997-01.

Commodor

UA04

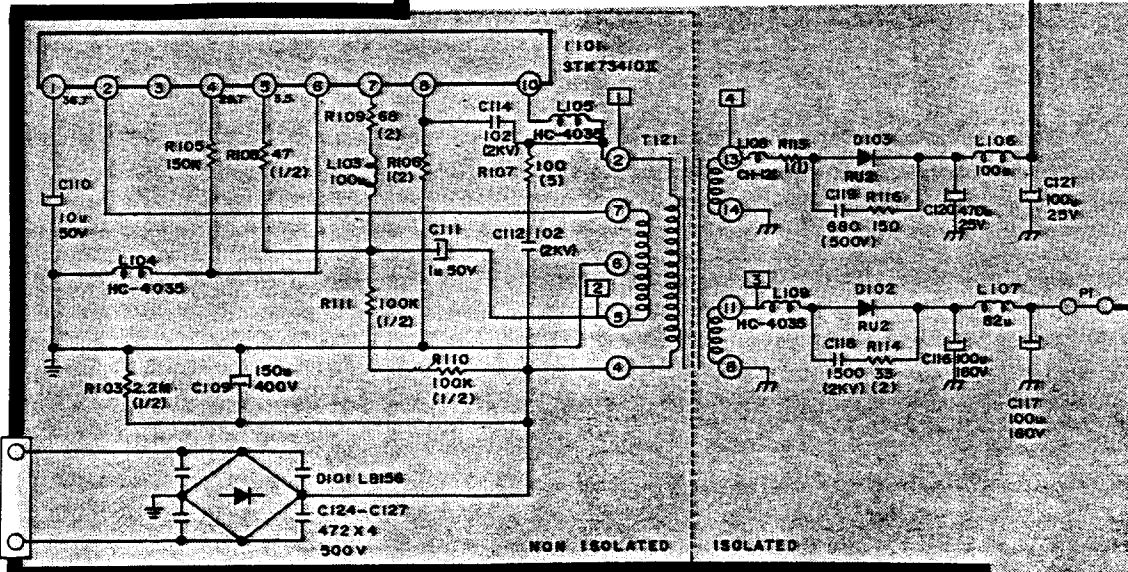
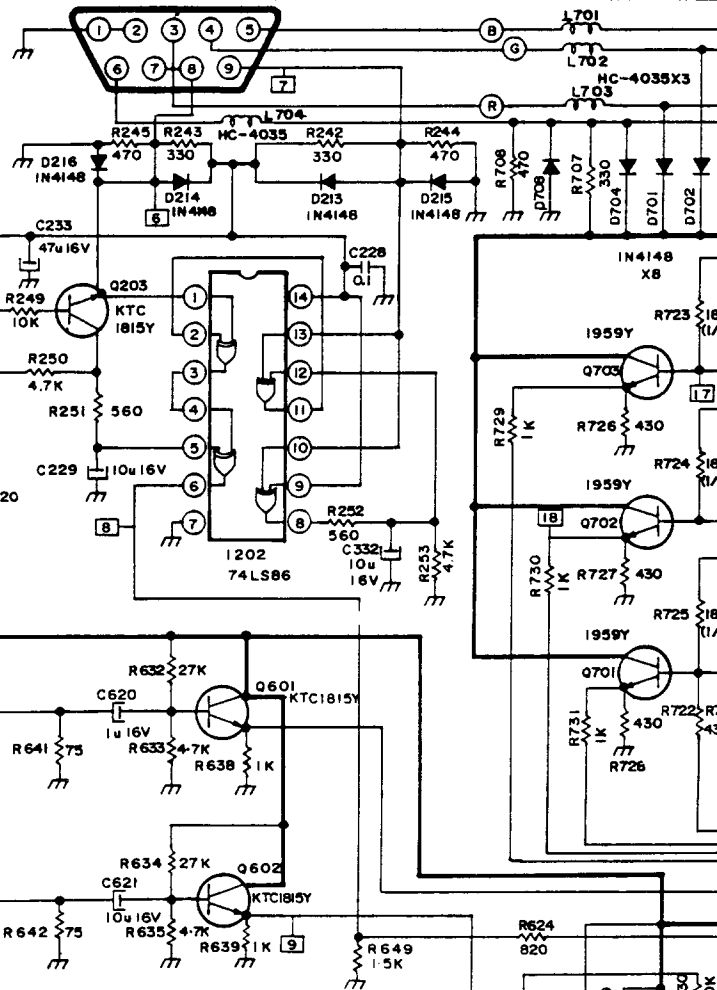


For Service Manuals
contact
MAURITRON SERVICES
8 Cherry Tree Road, Chinnor
Oxfordshire, OX9 4QY.
Tel (01844) 351694
Fax (01844) 352554

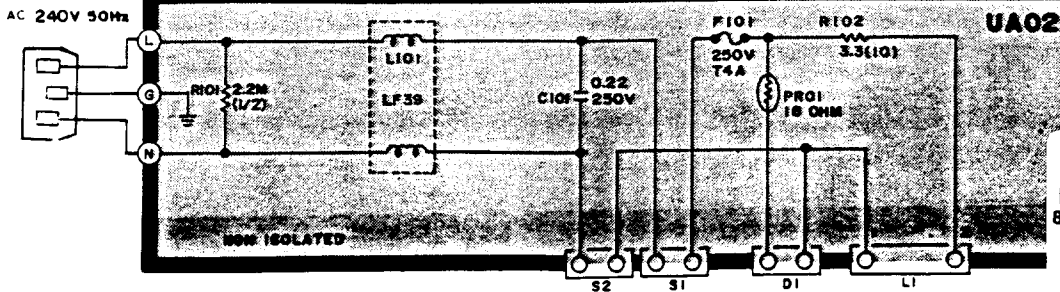


AUDIO
VIDEO
CHROMA

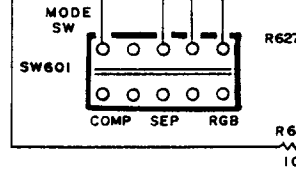
SPEAKER

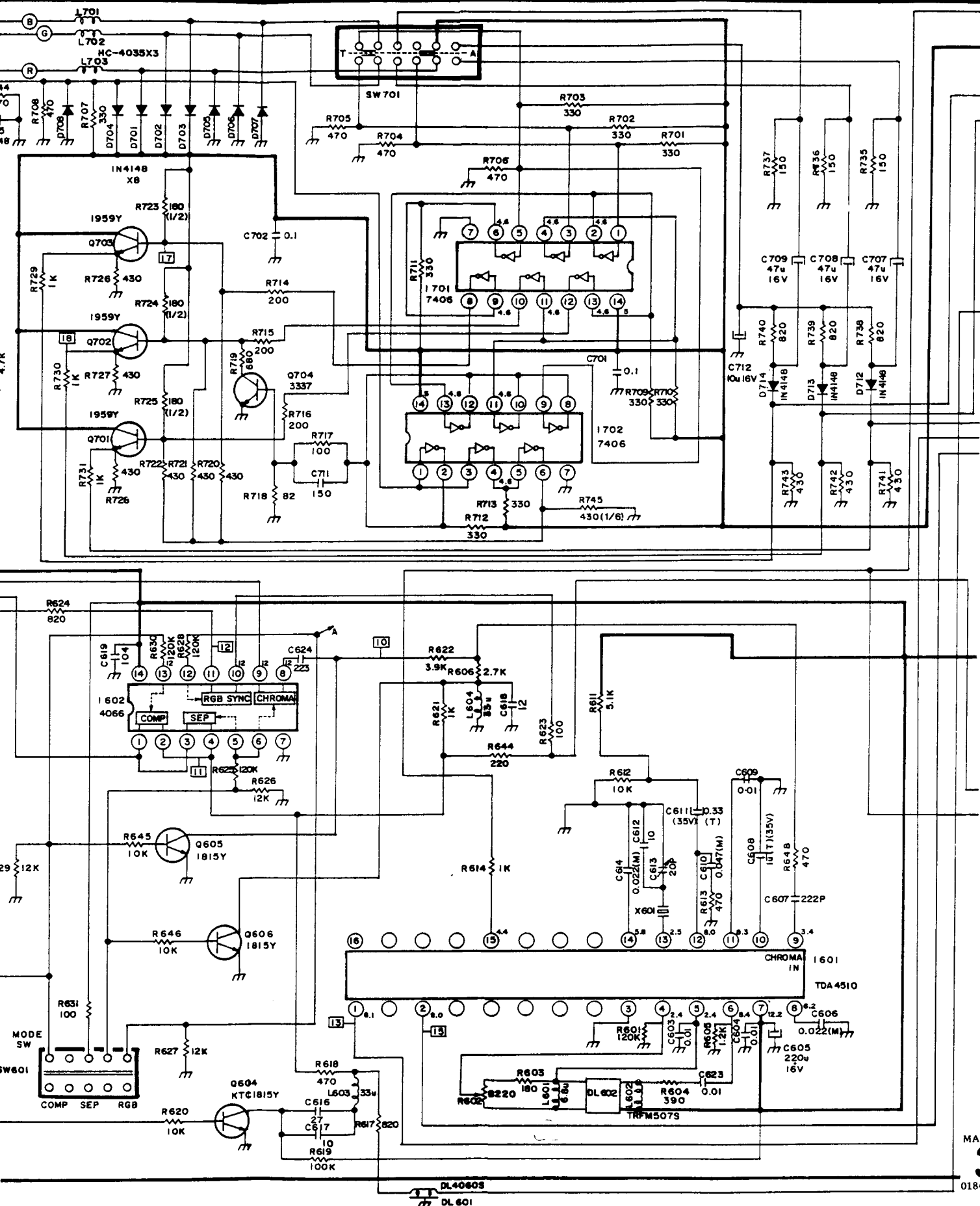


AC 240V 50Hz



For Service Manuals
contact
MAURITRON SERVICES
8 Cherry Tree Road, Chinnor
Oxfordshire, OX9 4QY.
Tel (01844) 351694
Fax (01844) 352554



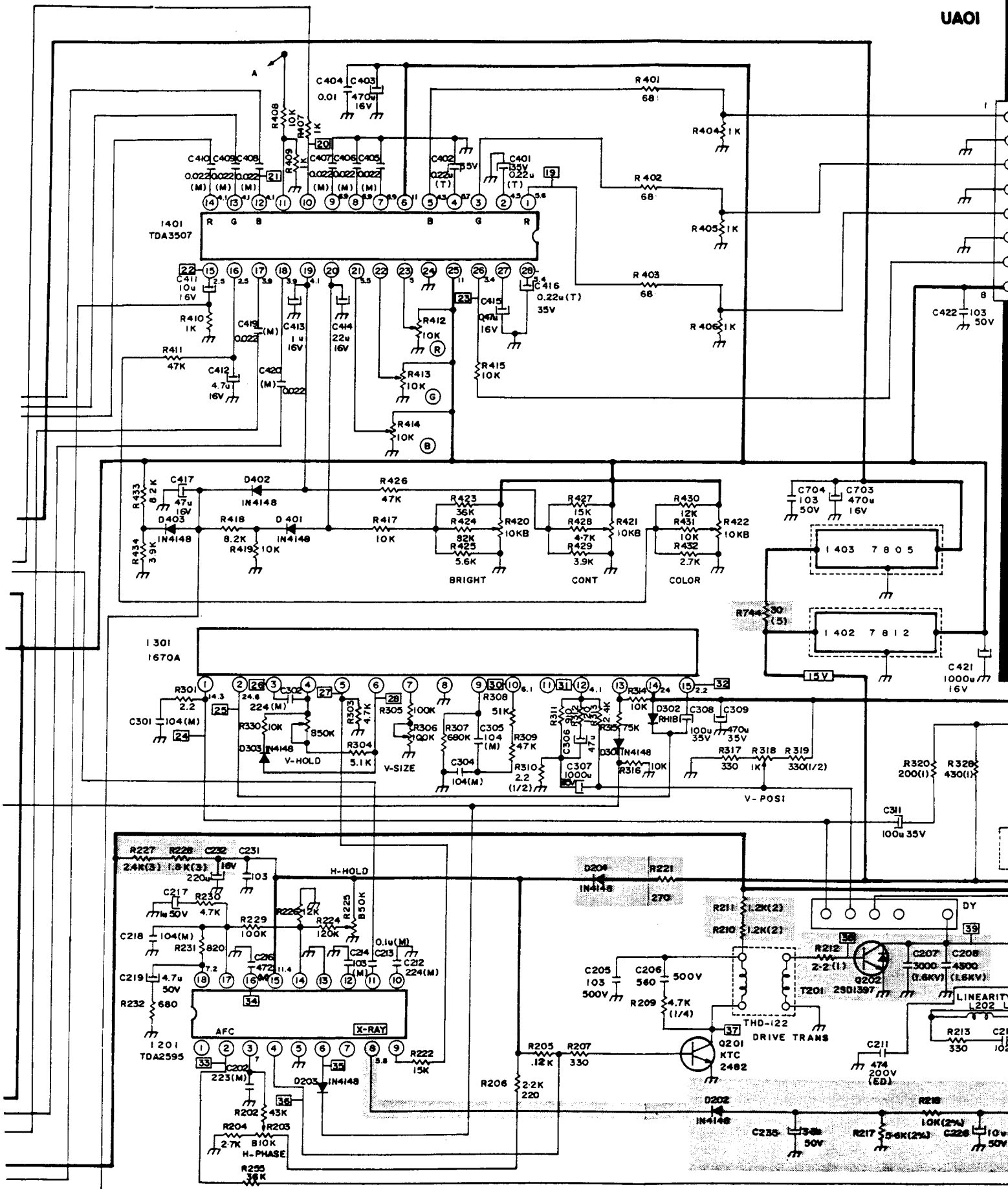


1084-D.
1084 S-D.
A-16-2 Chassis.
CMC-14TPRI.
PN-314997-01.

For Service Manuals
contact
MAURITRON SERVICES
8 Cherry Tree Road, Chinnor
Oxfordshire, OX9 4QY.
Tel (01844) 351694.
Fax (01844) 352554

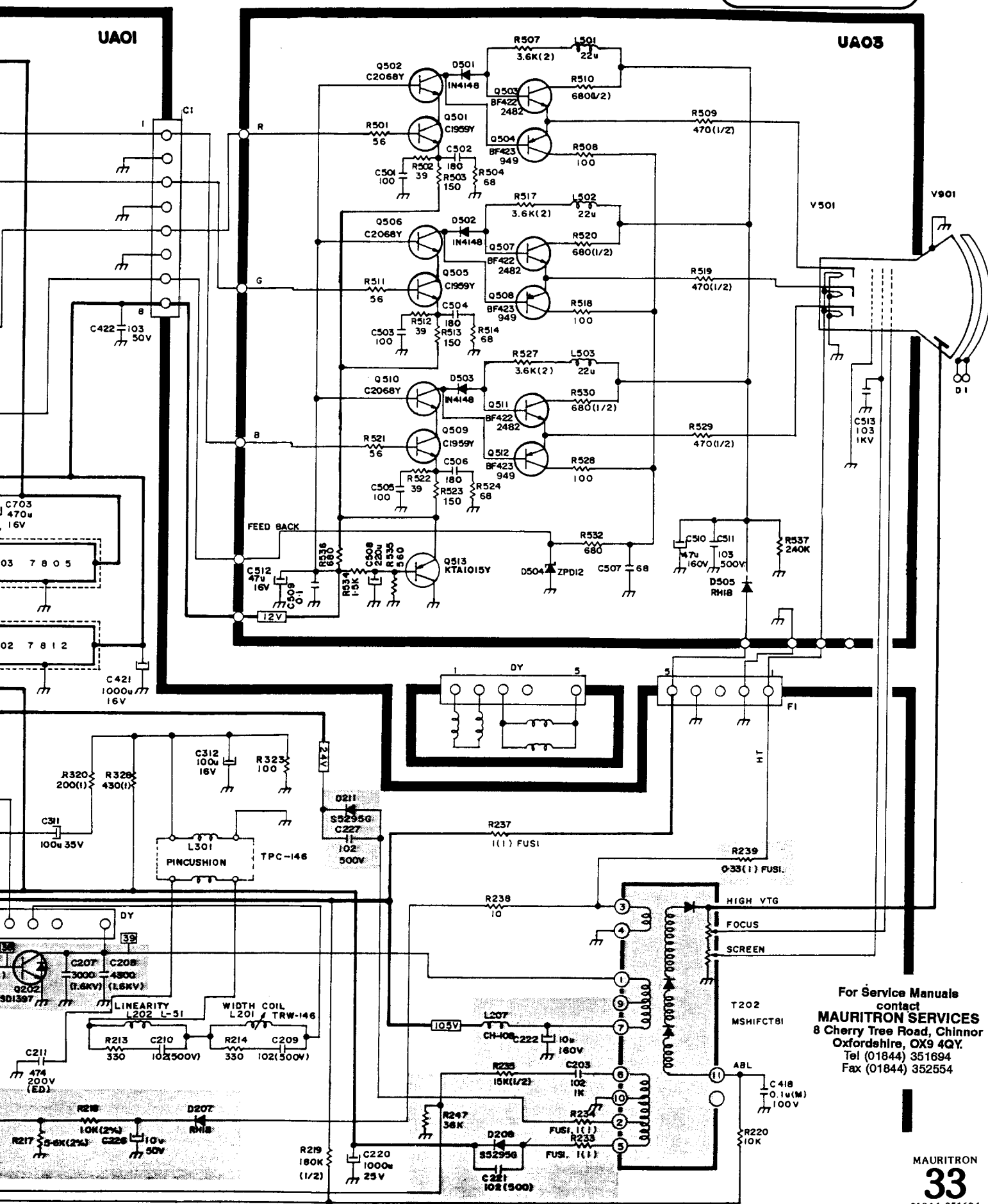
Commodore

UA01

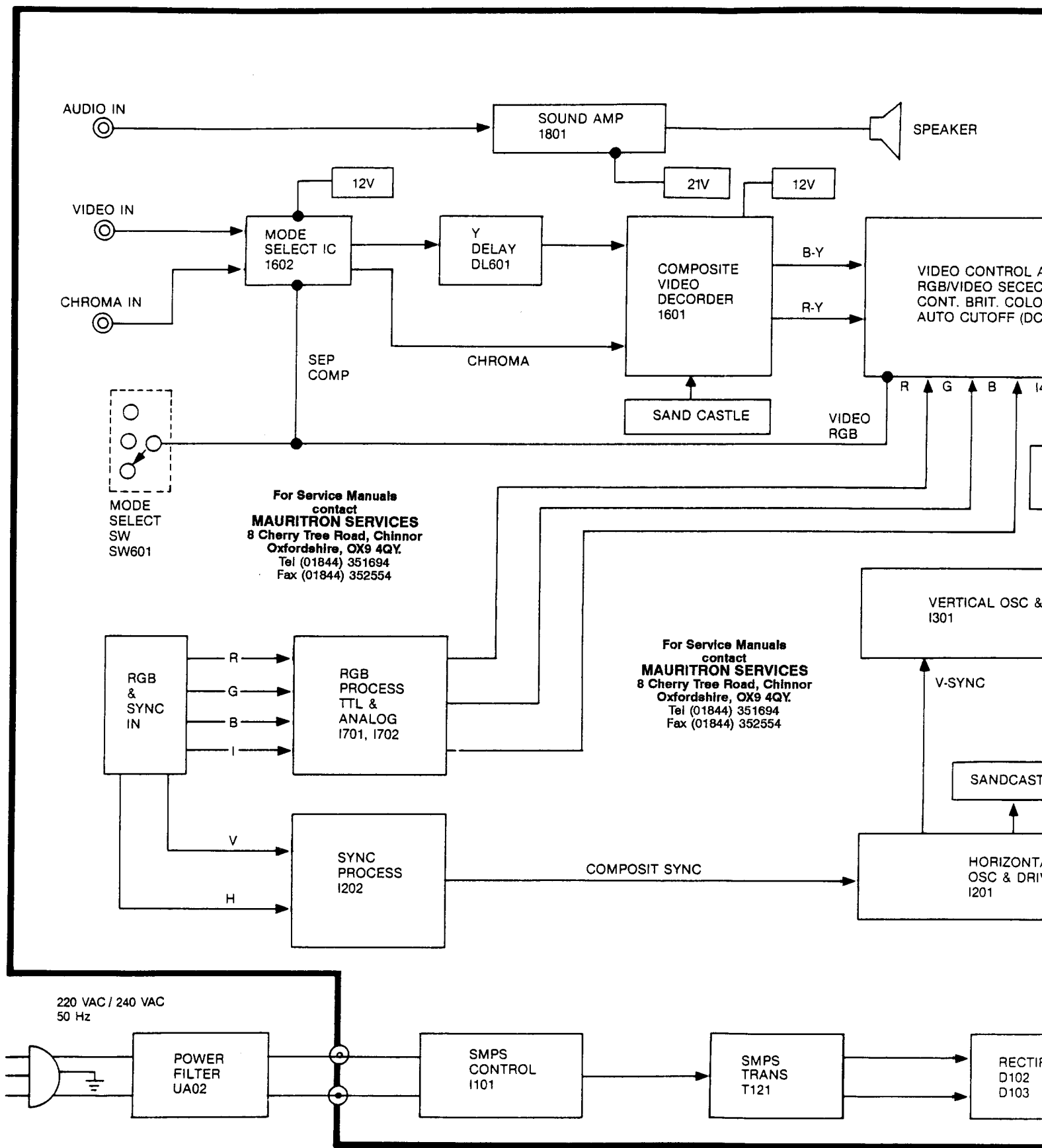


Commodore

1084-D.
1084 S-D.
A-16-2 Chassis.
CMC-14TPRI.
PN-314997-01.

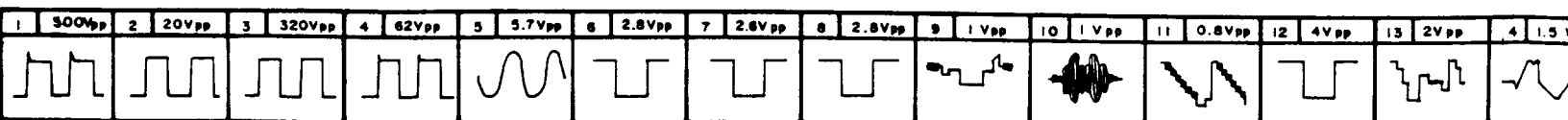


Commodore



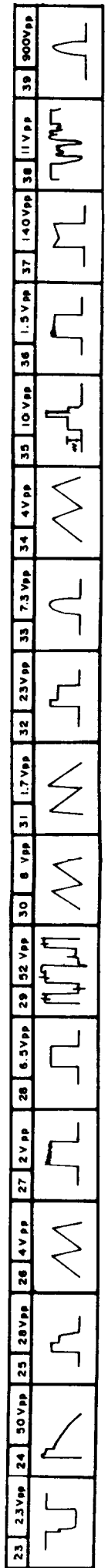
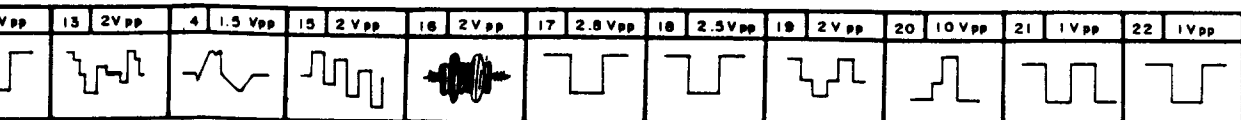
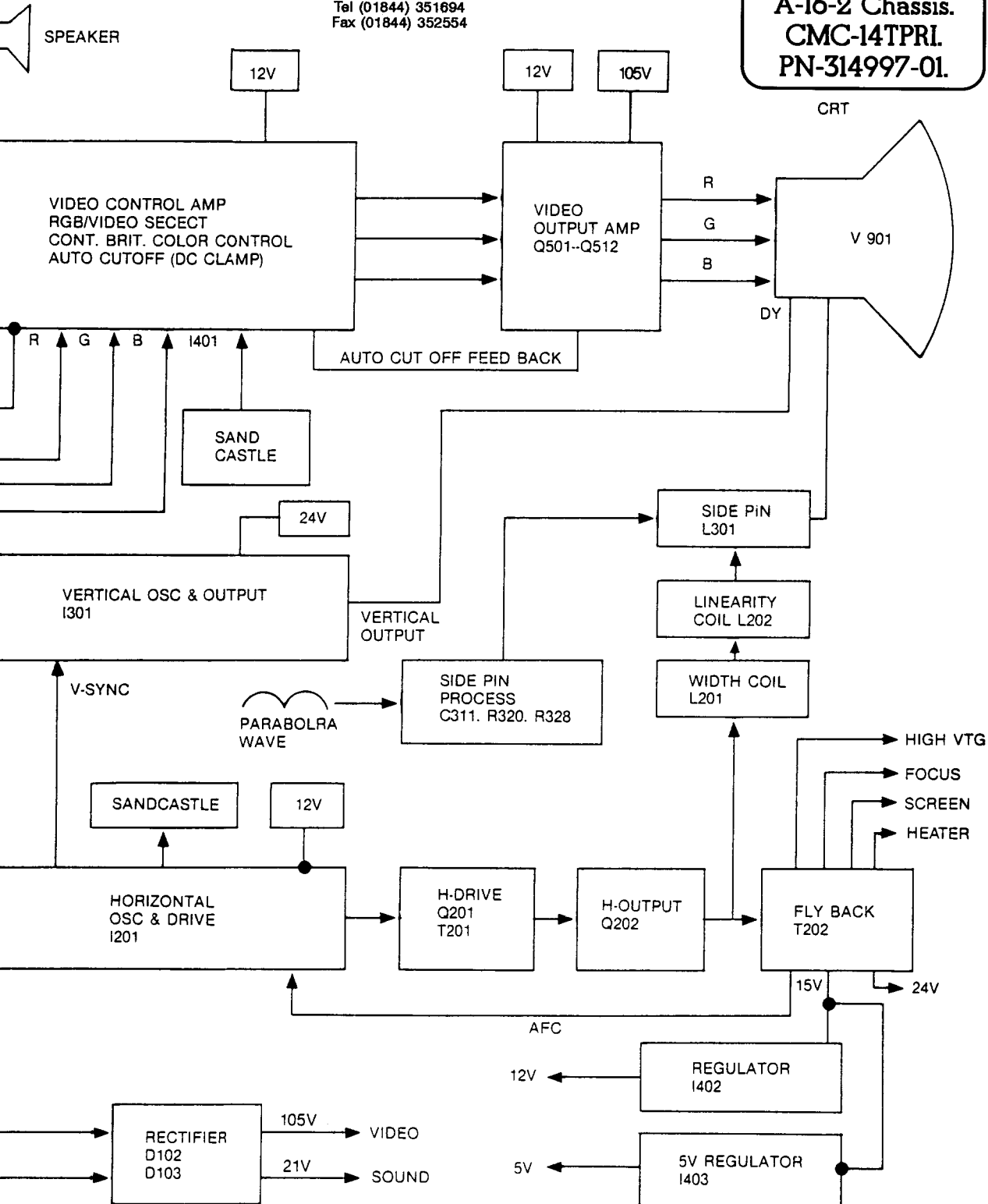
For Service Manuals contact
MAURITRON SERVICES
 8 Cherry Tree Road, Chinnor
 Oxfordshire, OX9 4QY.
 Tel (01844) 351694
 Fax (01844) 352554

For Service Manuals contact
MAURITRON SERVICES
 8 Cherry Tree Road, Chinnor
 Oxfordshire, OX9 4QY.
 Tel (01844) 351694
 Fax (01844) 352554



For Service Manuals
contact
MAURITRON SERVICES
8 Cherry Tree Road, Chinnor
Oxfordshire, OX9 4QY.
Tel (01844) 351694
Fax (01844) 352554

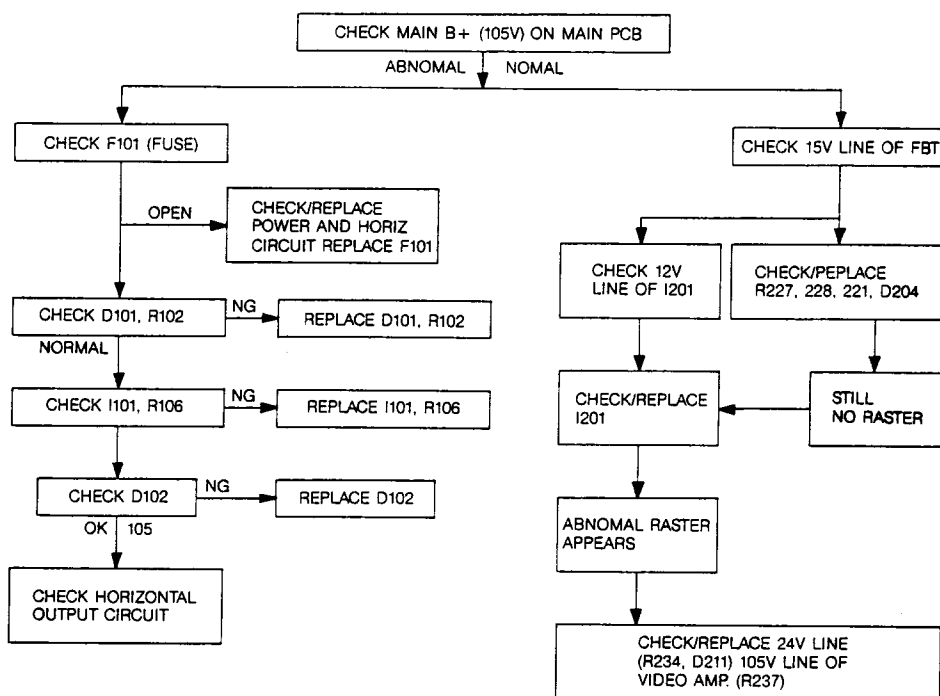
**1084-D.
1084 S-D.
A-16-2 Chassis.
CMC-14TPRI.
PN-314997-01.**



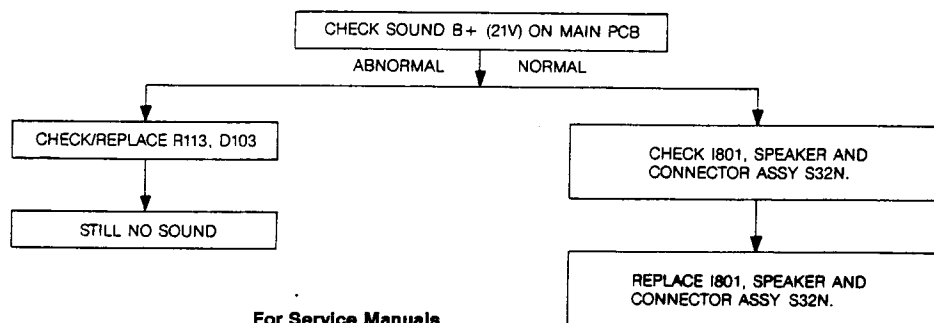
The following charts are devoted to troubleshooting which, if followed carefully, will assist you in tracking down a fault to the collect stage. In order to utilize the charts (fault trees), firstly establish the complaint, i.e. no raster.

Locate the chart applicable and then progress through the various alternatives until a final block the offending components or stage.

1. NO RASTER

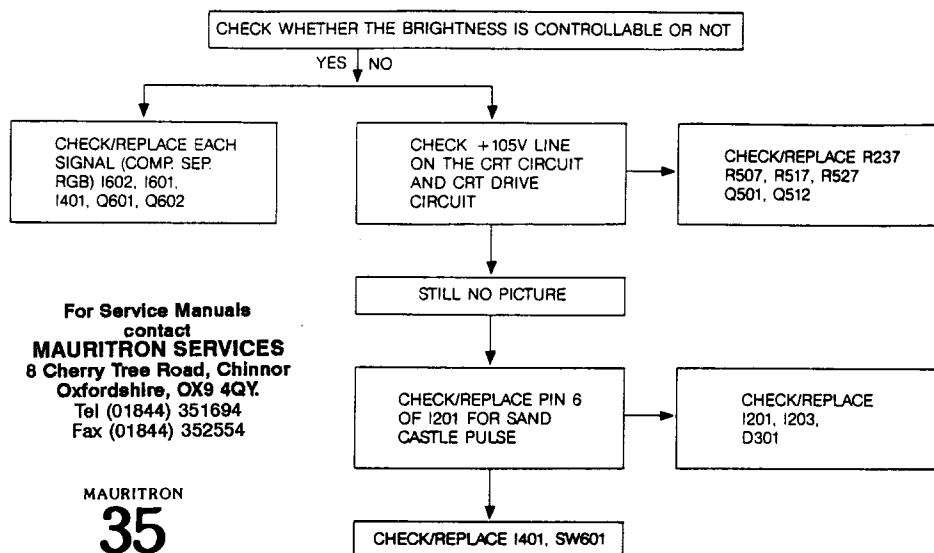


2. NO SOUND



For Service Manuals
contact
MAURITRON SERVICES
8 Cherry Tree Road, Chinnor
Oxfordshire, OX9 4QY.
Tel (01844) 351694
Fax (01844) 352554

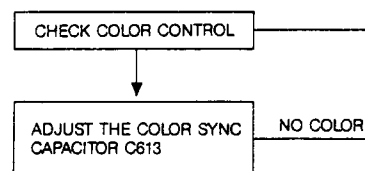
3. NO PICTURE



For Service Manuals
contact
MAURITRON SERVICES
8 Cherry Tree Road, Chinnor
Oxfordshire, OX9 4QY.
Tel (01844) 351694
Fax (01844) 352554

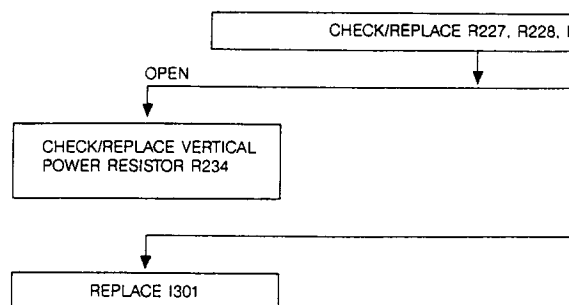
MAURITRON
35
01844-351694

4. NO COLOR (FOR COMP & SET MODE)

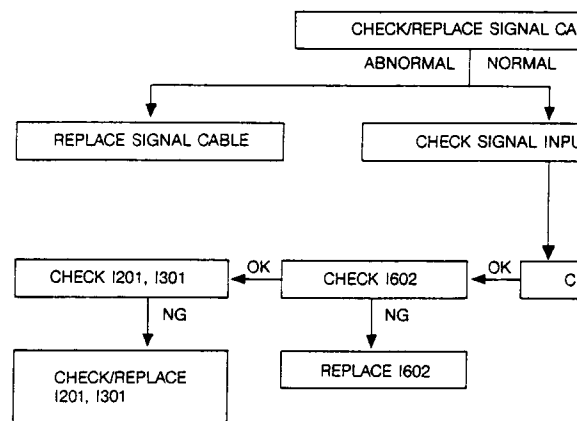


For Service Manuals
contact
MAURITRON SERVICES
8 Cherry Tree Road, Chinnor
Oxfordshire, OX9 4QY.
Tel (01844) 351694
Fax (01844) 352554

5. NO VERTICAL SCAN (ONE HORIZ, ONE LINE RASTER)



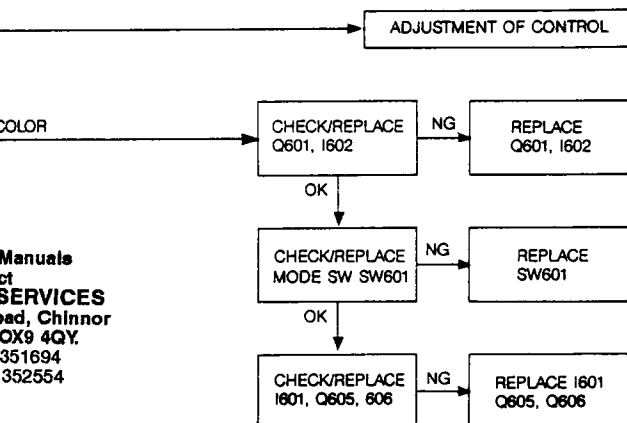
6. OUT OF VERTICAL SYNC AND HORIZ. SYNC (COMPOSIT SYNC)



Pin. No.	DIGITAL
1	Ground
2	Ground
3	Red
4	Green
5	Blue
6	Intensity
7	---
8	H. Sync.
9	V. Sync.
Shell	Shield
Polarity	Video.....Positive Sync.....Negative or Positive

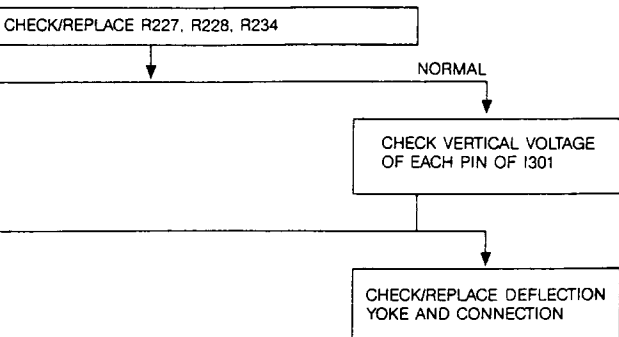
CODE)

1084-D.
1084 S-D.
A-16-2 Chassis.
CMC-14TPRI.
PN-314997-01.

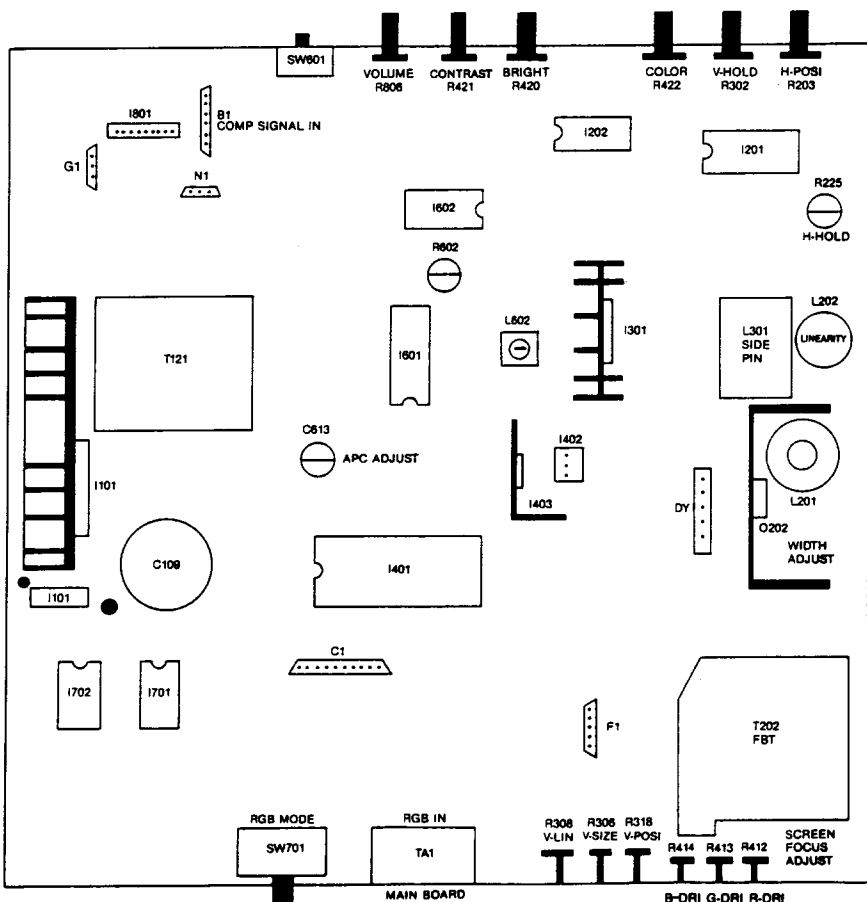
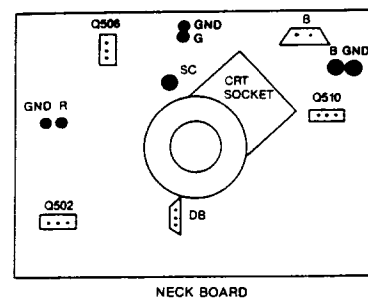
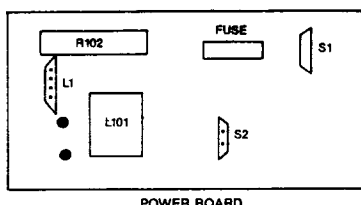
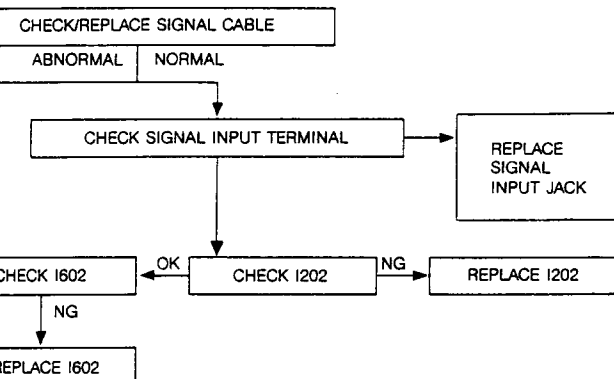


Manuals
ct
SERVICES
oad, Chinnor
OX9 4QY.
351694
352554

ONE LINE RASTER)

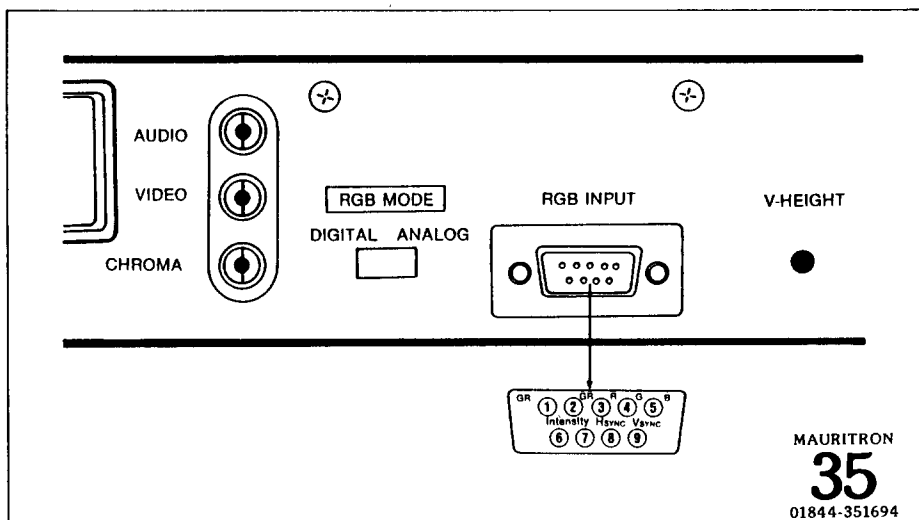


HIZ. SYNC (COMPOSIT SYNC)



SERVICE INFORMATION

1. REAR CONNECTION PANEL



DIGITAL	ANALOG
ound	Ground
ound	Ground
ed	Red
een	Green
ue	Blue
ensity	—
	Sync.
Sync.	—
Sync.	—
ield	Shield
deo.....Positive	Video.....Positive
nc.....Negative or Positive	Sync.....Negative