

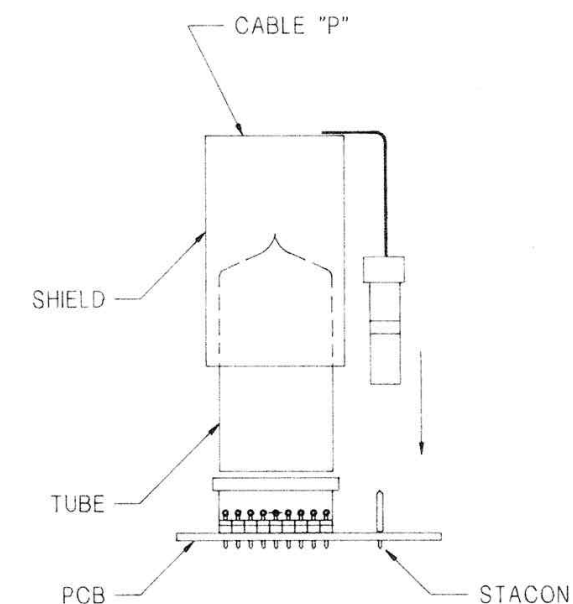
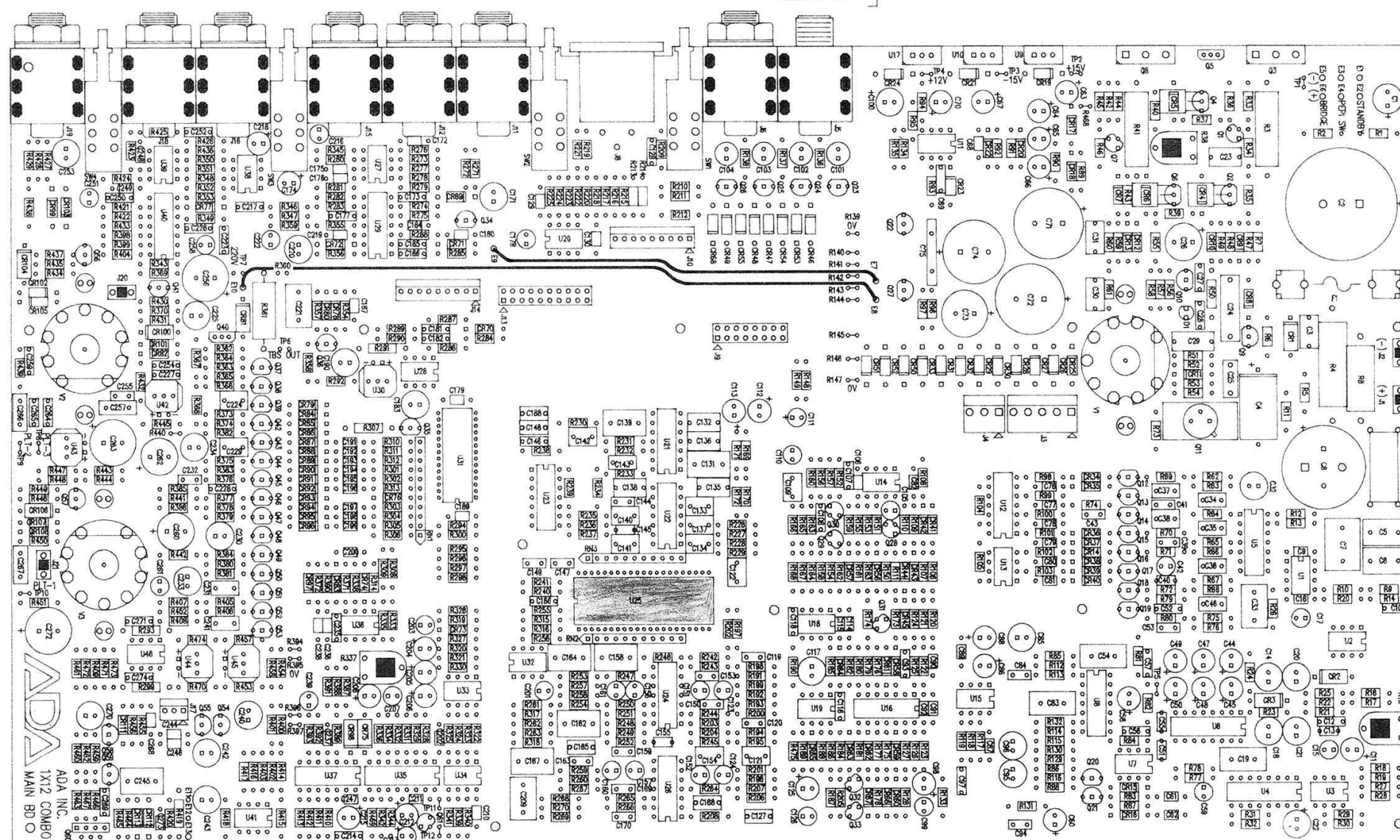


http://www.adadepot.com

REVISION HISTORY

ZONE	REV	DESCRIPTION	SIGNATURE	DATE
		SEE SHEET ONE		

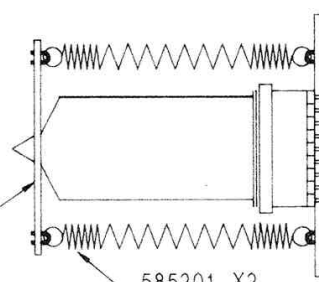
SUPPLIED WASHER AND NUT



ALIGN GND WIRE
WITH THE STACON
J21 NEAR V3 AND
INSTALL SHIELD.

1.75"
BEFORE INSTALLING SPRINGS,
STRETCH TO A RELAXED
LENGTH OF 1.75".

BREAKAWAY
FROM POT/PK BD



585201, X2
SPRING DETAIL

NOTES:

1. INSTALL, HAND SOLDER ONLY, J8, U30, U42, U43, U44, U45.
2. INSTALL IC'S INTO SOCKETS:
U3, U11, U20, U27, U38, U39,
U23, U6, U35, U31, U25.
3. INSTALL TUBES INTO SOCKETS, V1, V2 AND V3.
INSTALL TUBE SHIELD AND GND
AS SHOWN ON V3 ONLY.
4. INSTALL TUBE HOLD DOWN ON V1, V2, AND
V3 AS SHOWN IN SPRING DETAIL.
5. INSTALL HEATSINK 585063 ON Q11.

THIS DRAWING DOCUMENT CONTAINS INFORMATION WHICH IS PROPRIETARY TO AND THE PROPERTY OF ADA, INC. AND MAY NOT BE USED, REPRODUCED OR DISCLOSED IN ANY MANNER WITHOUT THE EXPRESSED CONSENT OF ADA, INC.	
FILE NAME:	C987RA.DWG
CHECKED BY:	
DATE:	
APPROVED BY:	
DATE:	

ADA SIGNAL PROCESSORS, INC. 420 LESSER STREET, OAKLAND, CA 94601	
TITLE: 1X12 COMBO MAIN BD ASSEMBLY	
DRAWN BY: RON FARAR	C 987 A 03/04
ENGR:	SIZE-NUMBER-REV-PG/PAGES
© COPYRIGHT 1993	DATE: 10-7-94 SCALE: