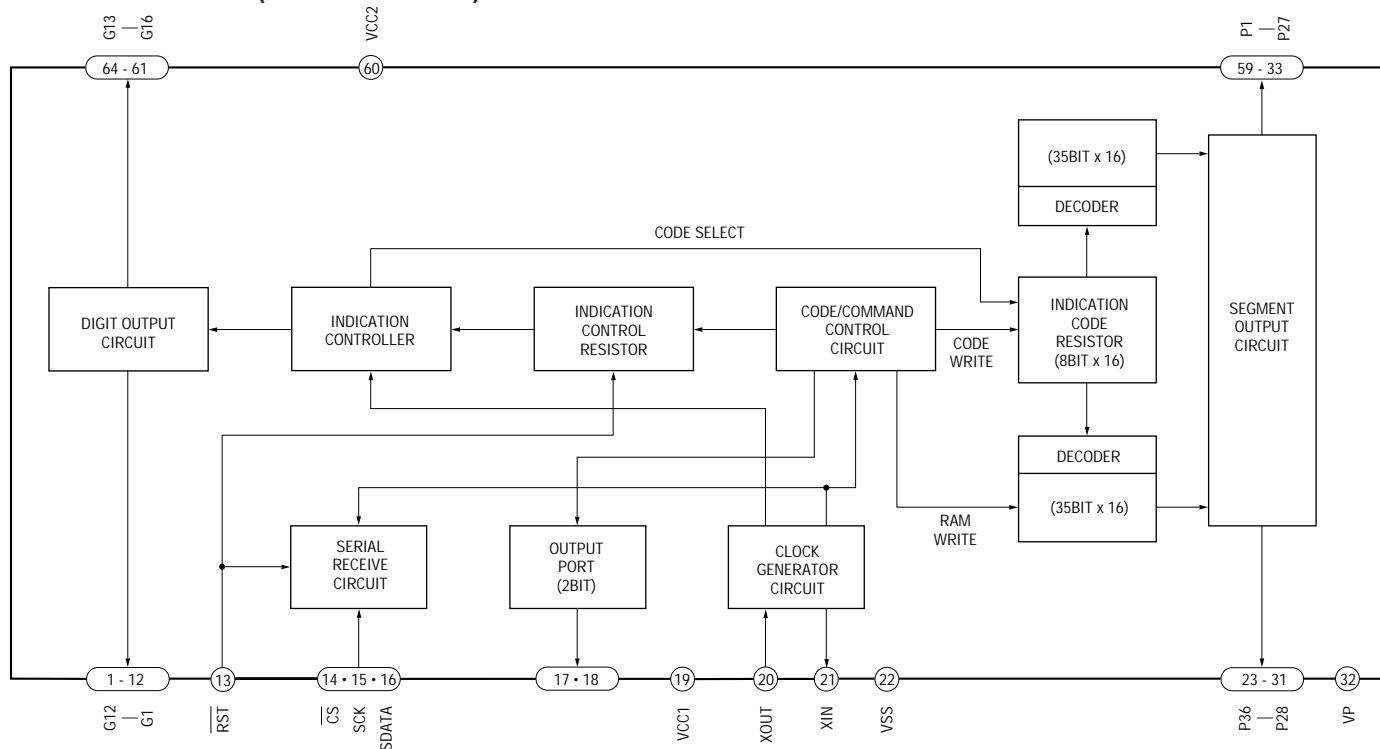
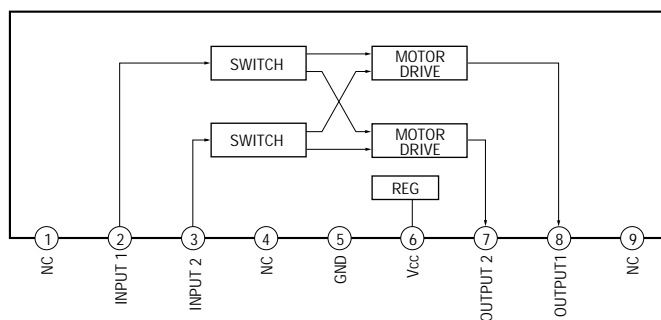


● IC BLOCK DIAGRAMS (DISPLAY)

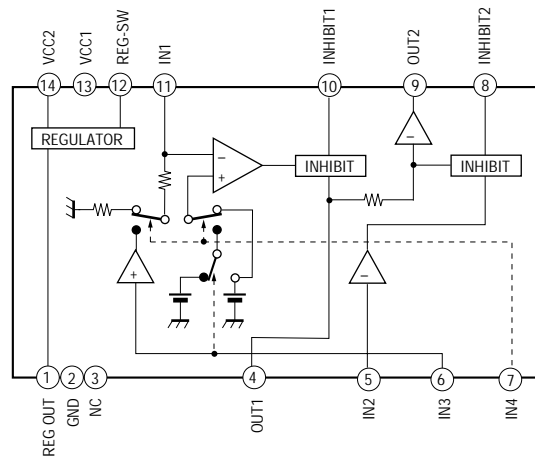
IC102 M66004FP-M6 (STR-D660Z/DE715)



IC106 BA6208 (STR-D550Z/D660Z/DE615/DE715)



IC1102 NJM2129D (STR-D660Z/DE715)



SECTION 3 EXPLODED VIEWS

NOTE :

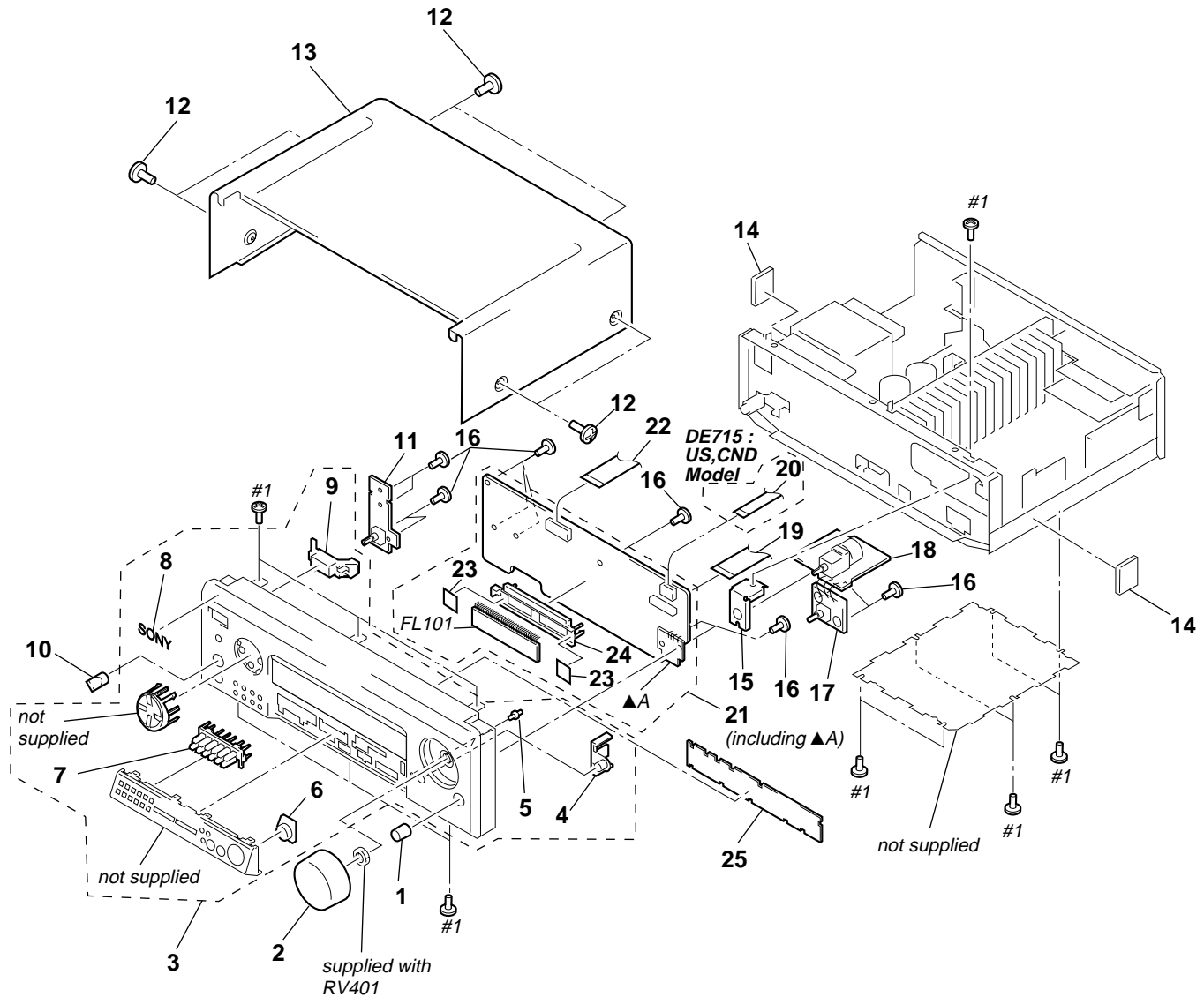
- -XX, -X mean standardized parts, so they may have some difference from the original one.
- Items marked “*” are not stocked since they are seldom required for routine service. Some delay should be anticipated when ordering these items.
- The mechanical parts with no reference number in the exploded views are not supplied.
- Hardware (# mark) list and accessories and packing materials are given in the last of this parts list.
- Abbreviation
CND : Canadian
AUS : Australian

The components identified by mark \triangle or dotted line with mark \triangle are critical for safety.
Replace only with part number specified.

Les composants identifiés par une marque \triangle sont critiques pour la sécurité.
Ne les remplacer que par une pièce portant le numéro spécifié.

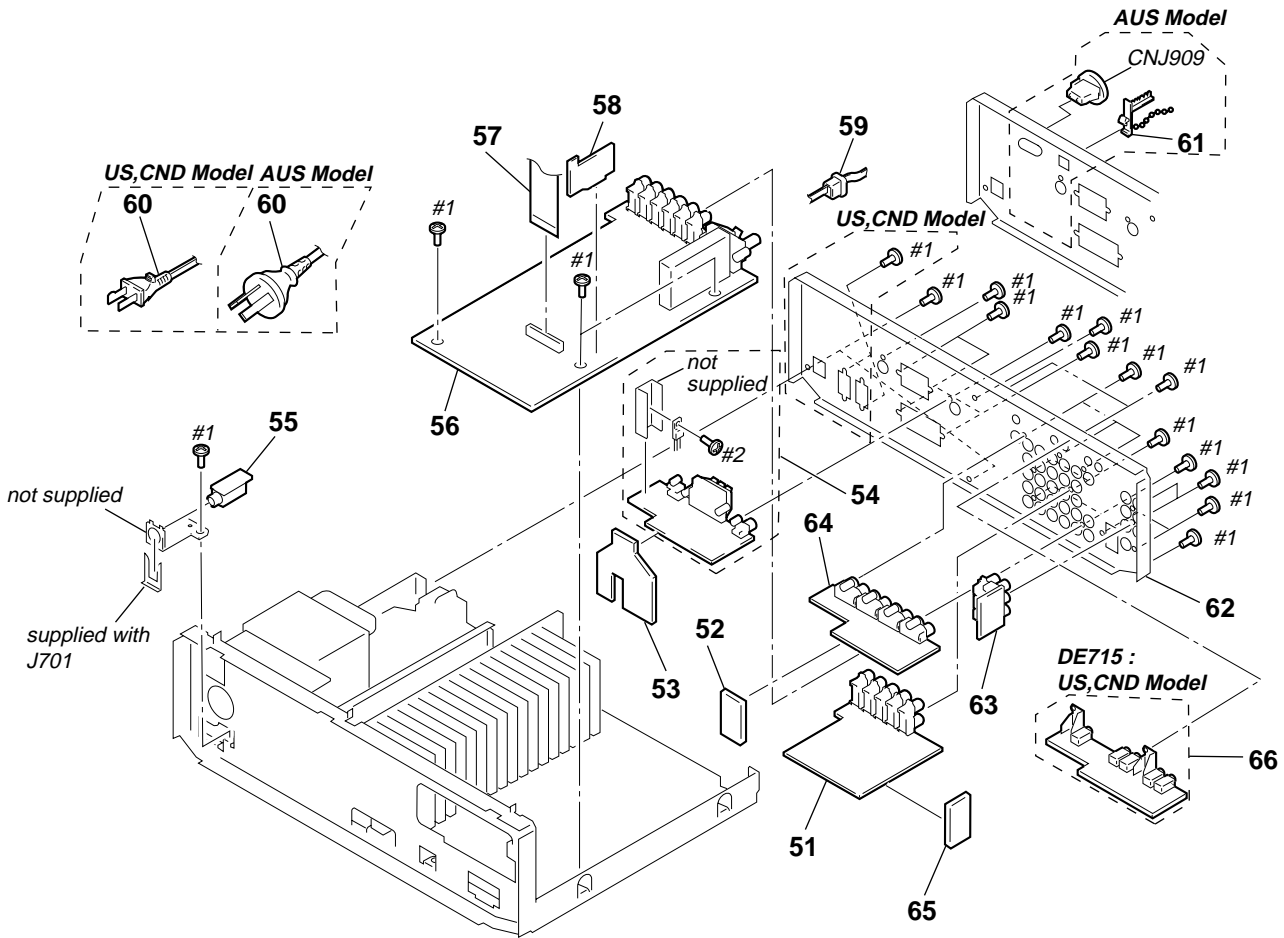
3-1. FRONT PANEL SECTION

$\triangle A$: L.B. SW board



Ref. No.	Part No.	Description	Remark	Ref. No.	Part No.	Description	Remark
1	4-980-639-01	KNOB (R14)		* 17	1-665-478-11	BALANCE BOARD (D660Z/DE715)	
2	X-4946-873-1	KNOB (R48) ASSY		* 17	1-665-467-11	BALANCE BOARD (D560Z/DE615)	
3	X-4948-324-1	PANEL ASSY, FRONT (DE615)		* 18	1-665-477-11	VOL BOARD (D660Z/DE715)	
3	X-4948-325-1	PANEL ASSY, FRONT (D560Z)		* 18	1-665-466-11	VOL BOARD (D560Z/DE615)	
3	X-4948-328-1	PANEL ASSY, FRONT (DE715:US,CND)		19	1-773-130-11	WIRE (FLAT TYPE) (19 CORE) (100mm)	
3	X-4948-329-1	PANEL ASSY, FRONT (D660Z)		20	1-769-928-11	WIRE (FLAT TYPE) (9 CORE) (DE715:US,CND)	
3	X-4948-557-1	PANEL ASSY, FRONT (DE715:AUS)		* 21	A-4392-893-A	DISPLAY BOARD, COMPLETE (D560Z/DE615)	
4	4-989-850-01	BUTTON (BB)		* 21	A-4392-918-A	DISPLAY BOARD, COMPLETE (DE715:US,CND)	
5	4-989-842-01	INDICATOR (BB)		* 21	A-4392-919-A	DISPLAY BOARD, COMPLETE (DE715:AUS)	
6	4-989-852-01	RING (SUR)		* 21	A-4392-942-A	DISPLAY BOARD, COMPLETE (D660Z)	
7	4-989-846-01	BUTTON (12)		22	1-773-115-11	WIRE (FLAT TYPE) (19 CORE) (320mm)	
8	3-008-600-11	EMBLEM (5-AR), SONY		* 23	4-921-941-01	CUSHION (FL)	
9	4-989-843-01	BUTTON (P-T)		* 24	3-386-245-11	HOLDER (FL) (D560Z/DE615)	
10	4-957-383-01	KNOB (F14)		* 24	4-981-656-01	HOLDER (C), FL INDICATION TUBE	
* 11	1-665-481-11	SP.SW BOARD (D660Z/DE715)				(D660Z/DE715)	
* 11	1-665-470-11	SP.SW BOARD (D560Z/DE615)		* 25	A-4392-908-A	SW BOARD, COMPLETE	
12	3-704-366-01	SCREW (CASE) (M3X8)		FL101	1-517-519-11	INDICATOR TUBE, FLUORESCENT	
* 13	4-982-682-01	CASE (414532)				(D660Z/DE715)	
14	4-985-642-01	CUSHION		FL101	1-517-672-11	INDICATOR TUBE, FLUORESCENT	
* 15	4-989-878-01	BRACKET (VOL)				(D560Z/DE615)	
16	4-951-620-01	SCREW (2.6X8), +BVTP					

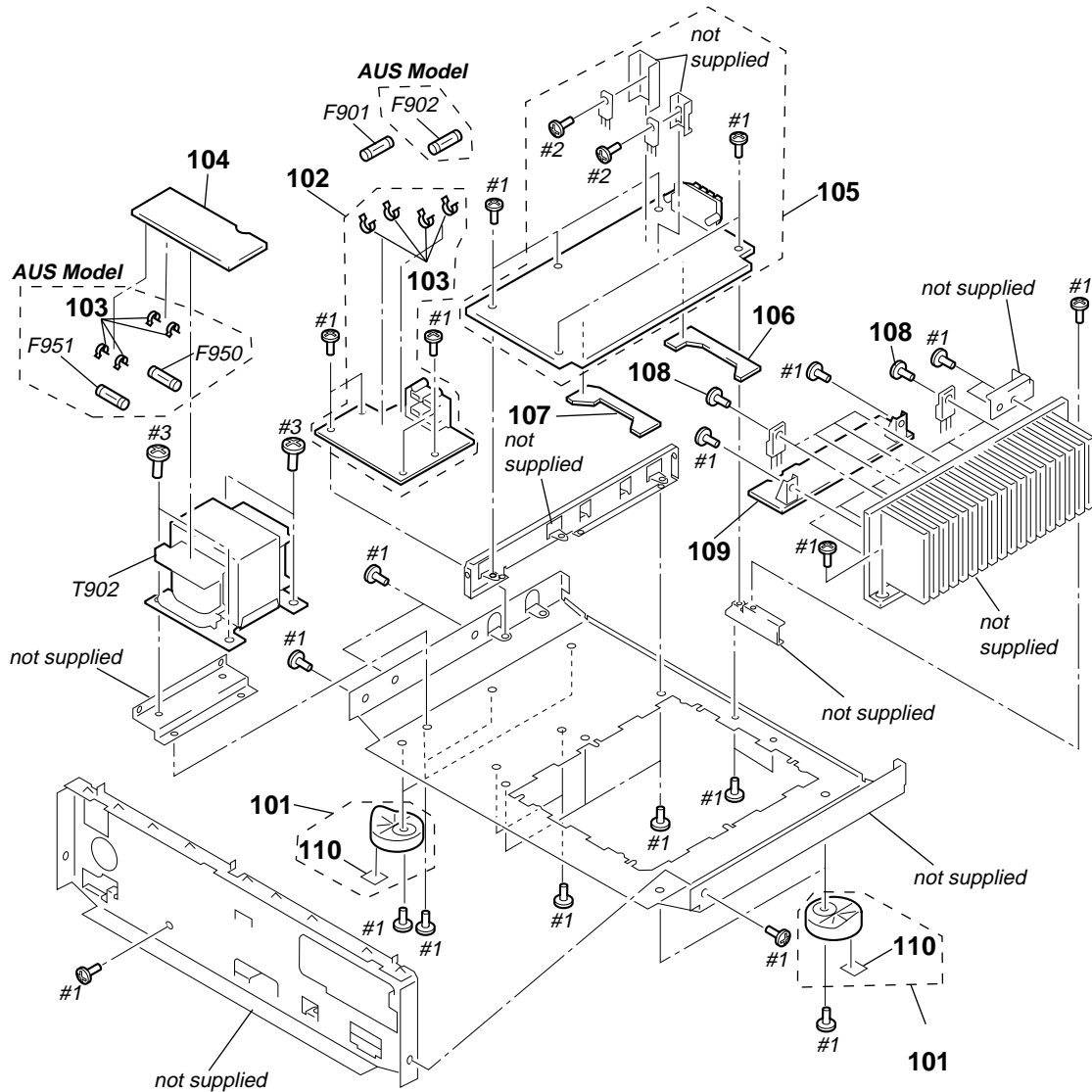
3-2. BACK PANEL SECTION



The components identified by mark \triangle or dotted line with mark \triangle are critical for safety. Replace only with part number specified.	Les composants identifiés par une marque \triangle sont critiques pour la sécurité. Ne les remplacer que par une pièce portant le numéro spécifié.
---	---

Ref. No.	Part No.	Description	Remark	Ref. No.	Part No.	Description	Remark
* 51	A-4392-896-A	AUDIO BOARD, COMPLETE (D560Z/DE615)		\triangle 60	1-769-743-11	CORD, POWER (US,CND)	
* 51	A-4392-923-A	AUDIO BOARD, COMPLETE (D660Z/DE715)		61	4-956-370-12	BAND, PLUG FIXED (AUS)	
* 52	1-665-480-11	AU-VIDEO BOARD (D660Z/DE715)		* 62	4-989-883-01	PANEL, BACK (DE615:US)	
* 52	1-665-469-11	AU-VIDEO BOARD (D560Z/DE615)		* 62	4-989-883-11	PANEL, BACK (DE615:CND)	
* 53	1-665-492-11	S-A-SP BOARD		* 62	4-989-883-21	PANEL, BACK (D560Z)	
* 54	A-4392-913-A	SP BOARD, COMPLETE (DE615/DE715:US,CND)		* 62	4-989-883-31	PANEL, BACK (DE715:US)	
* 54	A-4392-936-A	SP BOARD, COMPLETE (DE715:AUS)		* 62	4-989-883-41	PANEL, BACK (DE715:CND)	
* 54	A-4392-941-A	SP BOARD, COMPLETE (D560Z/D660Z)		* 62	4-989-883-51	PANEL, BACK (DE715:AUS)	
* 55	1-665-468-11	HP BOARD (D560Z/DE615)		* 62	4-989-883-61	PANEL, BACK (D660Z)	
* 55	1-665-479-11	HP BOARD (D660Z/DE715)		* 63	1-665-484-11	5.1 IN BOARD (D660Z/DE715)	
* 56	A-4392-905-A	SURR BOARD, COMPLETE (US,CND)		* 63	1-665-473-11	5.1 IN BOARD (D560Z/DE615)	
* 56	A-4392-931-A	SURR BOARD, COMPLETE (AUS)		* 64	A-4392-897-A	VIDEO BOARD, COMPLETE (D560Z/DE615)	
57	1-773-108-11	WIRE (FLAT TYPE) (19 CORE) (160mm)		* 64	A-4392-924-A	VIDEO BOARD, COMPLETE (D660Z/DE715)	
* 58	A-4392-917-A	SW AUDIO BOARD, COMPLETE		* 65	1-665-490-11	SURR-AUDIO BOARD	
* 59	3-703-244-00	BUSHING (2104), CORD		* 66	A-4392-933-A	CTRL-A BOARD, COMPLETE (DE715:US,CND)	
\triangle 60	1-696-847-11	CORD, POWER (AUS)		\triangle CNJ909	1-251-416-11	OUTLET, A.C. (AUS)	

3-3. CHASSIS SECTION



<p>The components identified by mark Δ or dotted line with mark Δ are critical for safety. Replace only with part number specified.</p>	<p>Les composants identifiés par une marque Δ sont critiques pour la sécurité. Ne les remplacer que par une pièce portant le numéro spécifié.</p>
---	---

Ref. No.	Part No.	Description	Remark	Ref. No.	Part No.	Description	Remark
101	X-4947-207-1	FOOT ASSY (F50150S) (AUS)		* 109	A-4392-920-A	REAR AMP BOARD, COMPLETE (D660Z/DE715:US,CND)	
101	X-4947-208-1	FOOT ASSY (F50150S) (US,CND)		* 109	A-4392-922-A	REAR AMP BOARD, COMPLETE (DE715:AUS)	
* 102	A-4392-915-A	STAND BY BOARD, COMPLETE (US,CND)			4-977-358-11	CUSHION (8X12.5) (US,CND)	
* 102	A-4392-939-A	STAND BY BOARD, COMPLETE (AUS)		110	1-532-506-51	FUSE, TIME LAG (T6.3AL/250V) (AUS)	
103	1-533-217-31	HOLDER, FUSE		Δ F901	1-533-310-11	FUSE, GLASS CYLINDRICAL(DIA.5) (6.3A/125V) (US,CND)	
* 104	1-665-487-11	SECONDARY BOARD		Δ F902	1-532-464-51	FUSE, TIME LAG (T2.5AL/250V) (AUS)	
* 105	A-4392-903-A	AMP BOARD, COMPLETE (US,CND)		Δ F950	1-532-506-51	FUSE, TIME LAG (T6.3AL/250V) (AUS)	
* 105	A-4392-930-A	AMP BOARD, COMPLETE (AUS)		Δ F951	1-532-506-51	FUSE, TIME LAG (T6.3AL/250V) (AUS)	
* 106	1-665-463-11	AMP JOINT (B) BOARD		Δ T902	1-431-274-11	TRANSFORMER, POWER (US,CND)	
* 107	1-665-458-11	CONT (AS-1) BOARD		Δ T902	1-431-288-11	TRANSFORMER, POWER (AUS)	
108	3-905-609-01	SCREW (TRANSISTOR)					
* 109	A-4392-894-A	REAR AMP BOARD, COMPLETE (D560Z/DE615)					

SECTION 4 ELECTRICAL PARTS LIST

NOTE :

- Due to standardization, replacements in the parts list may be different from the parts specified in the diagrams or the components used on the set.
- -XX, -X mean standardized parts, so they may have some difference from the original one.
- RESISTORS
All resistors are in ohms
METAL : Metal-film resistor
METAL OXIDE :Metal oxide-film resistor
F : nonflammable
- Items marked " * " are not stocked since they are seldom required for routine service. Some delay should be anticipated when ordering these items.

● SEMICONDUCTORS

In each case, u : μ , for example :
 uA.... : μ A.... , uPA.... : μ PA....
 uPB.... : μ PB.... , uPC.... : μ PC....
 uPD.... : μ PD....

● CAPACITORS

uF : μ F

● COILS

uH : μ H

● Abbreviation

CND : Canadian

AUS : Australian

The components identified by mark Δ or dotted line with mark Δ are critical for safety.
 Replace only with part number specified.

Les composants identifiés par une marque Δ sont critiques pour la sécurité.
 Ne les remplacer que par une pièce portant le numéro spécifié.

When indicating parts by reference number, please include the board.

Ref. No.	Part No.	Description	Remark				Ref. No.	Part No.	Description	Remark			
*	1-665-484-11	5.1 IN BOARD (D660Z/DE715)					C590	1-126-935-11	ELECT	470uF	20%	6.3V	
*	1-665-473-11	5.1 IN BOARD (D560Z/DE615)					C598	1-126-965-11	ELECT	22uF	20%	50V	
		*****					C620	1-126-967-11	ELECT	47uF	20%	16V	
		< CONNECTOR >					C621	1-107-597-11	CERAMIC	22PF	10%	500V	
CNP305	1-564-524-11	PLUG, CONNECTOR 9P					C622	1-107-597-11	CERAMIC	22PF	10%	500V	
		< JACK >					C623	1-162-286-31	CERAMIC	220PF	10%	50V	
J306	1-779-355-11	JACK, PIN 6P (5.1/DVD INPUT)					C803	1-109-932-11	ELECT	10000uF	20%	71V	
		< RESISTOR >					C804	1-109-932-11	ELECT	10000uF	20%	71V	
R317	1-249-421-11	CARBON	2.2K	5%	1/4W		C807	1-126-967-11	ELECT	47uF	20%	16V	
R325	1-249-421-11	CARBON	2.2K	5%	1/4W		C808	1-126-967-11	ELECT	47uF	20%	16V	
R326	1-249-421-11	CARBON	2.2K	5%	1/4W		C811	1-126-952-11	ELECT	1000uF	20%	35V	
R327	1-249-429-11	CARBON	10K	5%	1/4W		C812	1-126-951-11	ELECT	470uF	20%	35V	
R328	1-249-429-11	CARBON	10K	5%	1/4W		C817	1-126-967-11	ELECT	47uF	20%	50V	
							C818	1-126-967-11	ELECT	47uF	20%	50V	
								< CONNECTOR >					
R329	1-249-429-11	CARBON	10K	5%	1/4W		CNP701	1-564-320-00	PIN, CONNECTOR (B2P-VH) 2P				
R367	1-249-421-11	CARBON	2.2K	5%	1/4W		CNP702	1-695-091-11	PIN, CONNECTOR (PC BOARD) 15P				
R375	1-249-421-11	CARBON	2.2K	5%	1/4W		CNS502	1-770-404-11	HOUSING,CONNECTOR(PC BOARD)11P				
R376	1-249-421-11	CARBON	2.2K	5%	1/4W		CNS602	1-770-404-11	HOUSING,CONNECTOR(PC BOARD)11P				
R377	1-249-429-11	CARBON	10K	5%	1/4W		CNS701	1-569-323-11	SOCKET, CONNECTOR 19P				
								< DIODE >					
R378	1-249-429-11	CARBON	10K	5%	1/4W		D152	8-719-987-63	DIODE	1N4148M			
R379	1-249-429-11	CARBON	10K	5%	1/4W		D501	8-719-987-63	DIODE	1N4148M			
*****							D502	8-719-010-06	DIODE	UZ-2.2BS			
*	A-4392-903-A	AMP BOARD, COMPLETE (US,CND)					D503	8-719-010-06	DIODE	UZ-2.2BS			
*	A-4392-930-A	AMP BOARD, COMPLETE (AUS)					D504	8-719-987-63	DIODE	1N4148M			

*	1-537-738-21	TERMINAL, EARTH					D505	8-719-987-63	DIODE	1N4148M			
	7-685-872-09	SCREW +BVTT 3X8 (S)					D506	8-719-987-63	DIODE	1N4148M			
		< CAPACITOR >					D545	8-719-987-63	DIODE	1N4148M			
C520	1-126-967-11	ELECT	47uF	20%	16V		D546	8-719-987-63	DIODE	1N4148M			
C521	1-107-597-11	CERAMIC	22PF	10%	500V		D547	8-719-987-63	DIODE	1N4148M			
C522	1-107-597-11	CERAMIC	22PF	10%	500V		D548	8-719-815-85	DIODE	1S1585			
C523	1-162-286-31	CERAMIC	220PF	10%	50V		D549	8-719-815-85	DIODE	1S1585			
C524	1-126-964-11	ELECT	10uF	20%	50V		D551	8-719-987-63	DIODE	1N4148M			
							D552	8-719-010-06	DIODE	UZ-2.2BS			
C525	1-136-157-00	FILM	0.022uF	5%	50V		D553	8-719-010-06	DIODE	UZ-2.2BS			
C526	1-136-153-00	FILM	0.01uF	5%	50V		D554	8-719-987-63	DIODE	1N4148M			
C570	1-126-967-11	ELECT	47uF	20%	16V		D555	8-719-987-63	DIODE	1N4148M			
C571	1-107-597-11	CERAMIC	22PF	10%	500V		D556	8-719-987-63	DIODE	1N4148M			
C572	1-107-597-11	CERAMIC	22PF	10%	500V		D601	8-719-987-63	DIODE	1N4148M			
							D602	8-719-010-06	DIODE	UZ-2.2BS			
C573	1-162-286-31	CERAMIC	220PF	10%	50V		D603	8-719-010-06	DIODE	UZ-2.2BS			
C574	1-126-964-11	ELECT	10uF	20%	50V		D604	8-719-987-63	DIODE	1N4148M			
C575	1-136-157-00	FILM	0.022uF	5%	50V		D608	8-719-987-63	DIODE	1N4148M			
C576	1-136-153-00	FILM	0.01uF	5%	50V								

Ref. No.	Part No.	Description	Remark	Ref. No.	Part No.	Description	Remark
D611	8-719-987-63	DIODE 1N4148M		< RESISTOR >			
D647	8-719-987-63	DIODE 1N4148M		R521	1-247-840-00	CARBON 2.4K 5%	1/4W
D648	8-719-987-63	DIODE 1N4148M		R523	1-249-414-11	CARBON 560 5%	1/4W
D651	8-719-987-63	DIODE 1N4148M		△R524	1-249-408-11	CARBON 180 5%	1/4W F
D711	8-719-987-63	DIODE 1N4148M		△R525	1-249-408-11	CARBON 180 5%	1/4W F
D716	8-719-987-63	DIODE 1N4148M		△R526	1-233-352-41	ENCAPSULATED COMPONENT 0.22X2 2W	F
D807	8-719-934-22	DIODE HZS30-2L		R527	1-247-850-11	CARBON 6.2K 5%	1/4W
< IC >				R528	1-249-419-11	CARBON 1.5K 5%	1/4W
IC801	8-759-391-87	IC BA78M12P		R529	1-247-866-11	CARBON 30K 5%	1/4W
IC803	8-759-604-45	IC M5F79M12		R530	1-249-419-11	CARBON 1.5K 5%	1/4W
< COIL >				R531	1-249-433-11	CARBON 22K 5%	1/4W
L501	1-420-872-00	COIL, AIR-CORE		R532	1-249-437-11	CARBON 47K 5%	1/4W
L551	1-420-872-00	COIL, AIR-CORE		△R533	1-249-393-11	CARBON 10 5%	1/4W F
< TRANSISTOR >				△R534	1-249-389-11	CARBON 4.7 5%	1/4W F
Q504	8-729-119-76	TRANSISTOR 2SA1175-HFE		R535	1-249-431-11	CARBON 15K 5%	1/4W
Q505	8-729-209-15	TRANSISTOR 2SD2012		R539	1-249-427-11	CARBON 6.8K 5%	1/4W
Q506	8-749-010-25	IC MN2488-OPY-M		R540	1-249-417-11	CARBON 1K 5%	1/4W
Q507	8-749-010-26	IC MP1620-OPY-M		R541	1-249-435-11	CARBON 33K 5%	1/4W
Q508	8-729-140-82	TRANSISTOR 2SA988-PAFAEA		R542	1-249-429-11	CARBON 10K 5%	1/4W
Q509	8-729-281-53	TRANSISTOR 2SC1815-GR		R547	1-249-425-11	CARBON 4.7K 5%	1/4W
Q510	8-729-900-63	TRANSISTOR DTA124ES		R548	1-249-429-11	CARBON 10K 5%	1/4W
Q511	8-729-900-63	TRANSISTOR DTA124ES		△R549	1-249-393-11	CARBON 10 5%	1/4W
Q546	8-729-119-79	TRANSISTOR 2SC2785-FEK		R550	1-249-429-11	CARBON 10K 5%	1/4W
Q547	8-729-140-84	TRANSISTOR 2SC1841-PAFAEA		R571	1-247-840-00	CARBON 2.4K 5%	1/4W
Q548	8-729-119-79	TRANSISTOR 2SC2785-FEK		R573	1-249-414-11	CARBON 560 5%	1/4W
Q549	8-729-140-82	TRANSISTOR 2SA988-PAFAEA		△R574	1-249-408-11	CARBON 180 5%	1/4W F
Q554	8-729-119-76	TRANSISTOR 2SA1175-HFE		△R575	1-249-408-11	CARBON 180 5%	1/4W F
Q555	8-729-209-15	TRANSISTOR 2SD2012		△R576	1-233-352-41	ENCAPSULATED COMPONENT 0.22X2 2W	F
Q556	8-749-010-25	IC MN2488-OPY-M		R577	1-247-850-11	CARBON 6.2K 5%	1/4W
Q557	8-749-010-26	IC MP1620-OPY-M		R578	1-249-419-11	CARBON 1.5K 5%	1/4W
Q558	8-729-140-82	TRANSISTOR 2SA988-PAFAEA		R579	1-247-866-11	CARBON 30K 5%	1/4W
Q559	8-729-281-53	TRANSISTOR 2SC1815-GR		R580	1-249-419-11	CARBON 1.5K 5%	1/4W
Q560	8-729-900-63	TRANSISTOR DTA124ES		R581	1-249-433-11	CARBON 22K 5%	1/4W
Q561	8-729-900-63	TRANSISTOR DTA124ES		R582	1-249-437-11	CARBON 47K 5%	1/4W
Q596	8-729-119-79	TRANSISTOR 2SC2785-FEK		△R584	1-249-389-11	CARBON 4.7 5%	1/4W F
Q601	8-729-119-79	TRANSISTOR 2SC2785-FEK		R585	1-249-431-11	CARBON 15K 5%	1/4W
Q604	8-729-119-76	TRANSISTOR 2SA1175-HFE		R586	1-249-429-11	CARBON 10K 5%	1/4W
Q605	8-729-209-15	TRANSISTOR 2SD2012		R587	1-249-425-11	CARBON 4.7K 5%	1/4W
Q606	8-749-010-25	IC MN2488-OPY-M		△R588	1-249-393-11	CARBON 10 5%	1/4W F
Q607	8-749-010-26	IC MP1620-OPY-M		R589	1-249-420-11	CARBON 1.8K 5%	1/4W
Q608	8-729-140-82	TRANSISTOR 2SA988-PAFAEA		R590	1-249-420-11	CARBON 1.8K 5%	1/4W
Q612	8-729-281-53	TRANSISTOR 2SC1815-GR		R597	1-249-420-11	CARBON 1.8K 5%	1/4W
Q613	8-729-281-53	TRANSISTOR 2SC1815-GR		R598	1-249-420-11	CARBON 1.8K 5%	1/4W
Q614	8-729-201-53	TRANSISTOR 2SA1015-GR (US,CND)		R621	1-247-840-00	CARBON 2.4K 5%	1/4W
Q614	8-729-140-82	TRANSISTOR 2SA988-PAFAEA (AUS)		R623	1-249-414-11	CARBON 560 5%	1/4W
Q615	8-729-900-36	TRANSISTOR DTC124ES		△R624	1-249-393-11	CARBON 10 5%	1/4W F
Q616	8-729-900-36	TRANSISTOR DTC124ES		△R625	1-249-393-11	CARBON 10 5%	1/4W F
Q617	8-729-900-36	TRANSISTOR DTC124ES		△R626	1-233-352-41	ENCAPSULATED COMPONENT 0.22X2 2W	F
Q618	8-729-900-63	TRANSISTOR DTA124ES		R627	1-247-850-11	CARBON 6.2K 5%	1/4W
Q801	8-729-140-97	TRANSISTOR 2SB734-34		R628	1-249-419-11	CARBON 1.5K 5%	1/4W
				R632	1-249-437-11	CARBON 47K 5%	1/4W
				△R640	1-216-426-11	METAL OXIDE 82 5%	1W F
				R641	1-249-441-11	CARBON 100K 5%	1/4W
				△R642	1-215-889-00	METAL OXIDE 330 5%	2W F
				R643	1-249-441-11	CARBON 100K 5%	1/4W
				△R644	1-215-890-11	METAL OXIDE 470 5%	2W F

The components identified by mark △ or dotted line with mark △ are critical for safety. Replace only with part number specified.	Les composants identifiés par une marque △ sont critiques pour la sécurité. Ne les remplacer que par une pièce portant le numéro spécifié.
---	---

AMP

AMP JOINT (B)

AU-VIDEO

AUDIO

AUDIO SW

Ref. No.	Part No.	Description			Remark
R645	1-249-441-11	CARBON	100K	5%	1/4W
R650	1-249-425-11	CARBON	4.7K	5%	1/4W
R651	1-249-429-11	CARBON	10K	5%	1/4W
△ R652	1-249-393-11	CARBON	10	5%	1/4W F
△ R739	1-215-868-00	METAL OXIDE	680	5%	1W F
< RELAY >					
△ R765	1-249-393-11	CARBON	10	5%	1/4W F
△ R789	1-215-868-00	METAL OXIDE	680	5%	1W F
△ R802	1-249-401-11	CARBON	47	5%	1/4W F
R803	1-247-843-11	CARBON	3.3K	5%	1/4W
< RELAY >					
RY501	1-515-920-11	RELAY (24V)			
RY502	1-515-920-11	RELAY (24V)			
RY602	1-515-793-11	RELAY			
< TERMINAL >					
TM601	1-537-922-11	TERMINAL BOARD (SP) (FRONT SPEAKERS)			

*	1-665-463-11	AMP JOINT (B) BOARD			

< CONNECTOR >					
CNP601	1-770-553-11	CONNECTOR, BOARD TO BOARD 11P			
CNP602	1-770-553-11	CONNECTOR, BOARD TO BOARD 11P			

*	1-665-480-11	AU-VIDEO BOARD (D660Z/DE715)			
*	1-665-469-11	AU-VIDEO BOARD (D560Z/DE615)			

< CONNECTOR >					
CNP305	1-750-180-11	PIN, CONNECTOR (PC BOARD) 5P			
CNS305	1-750-179-11	SOCKET, CONNECTOR 5P			

*	A-4392-896-A	AUDIO BOARD, COMPLETE (D560Z/DE615)			
*	A-4392-923-A	AUDIO BOARD, COMPLETE (D660Z/DE715)			

< CAPACITOR >					
C398	1-162-282-31	CERAMIC	100PF	10%	50V
C399	1-162-294-31	CERAMIC	0.001uF	10%	50V
< CONNECTOR >					
CNS302	1-695-095-11	SOCKET, CONNECTOR 13P			
CNS304	1-750-180-11	PIN, CONNECTOR (PC BOARD) 5P			
< IC >					
IC303	8-759-805-14	IC LC7822			
< JACK >					
J303	1-573-029-31	JACK, PIN 4P (VIDEO 2 AUDIO OUT,TV/DBS AUDIO IN/OUT)			
J304	1-770-015-11	JACK, PIN 6P (VIDEO 1 AUDIO IN/OUT,VIDEO 2 AUDIO IN/OUT)			

Ref. No.	Part No.	Description	Remark		
< RESISTOR >					
R318	1-249-417-11	CARBON	1K	5%	1/4W
R319	1-249-417-11	CARBON	1K	5%	1/4W
R320	1-249-417-11	CARBON	1K	5%	1/4W
R321	1-249-417-11	CARBON	1K	5%	1/4W
R322	1-249-417-11	CARBON	1K	5%	1/4W
< RESISTOR >					
R368	1-249-417-11	CARBON	1K	5%	1/4W
R369	1-249-417-11	CARBON	1K	5%	1/4W
R370	1-249-417-11	CARBON	1K	5%	1/4W
R371	1-249-417-11	CARBON	1K	5%	1/4W
R372	1-249-417-11	CARBON	1K	5%	1/4W
< RESISTOR >					
R388	1-249-437-11	CARBON	47K	5%	1/4W
R389	1-249-437-11	CARBON	47K	5%	1/4W
R398	1-249-417-11	CARBON	1K	5%	1/4W
R399	1-249-425-11	CARBON	4.7K	5%	1/4W

*	A-4392-917-A	AUDIO SW BOARD, COMPLETE			

< CAPACITOR >					
C407	1-126-795-11	ELECT	10uF	20%	50V
C408	1-164-159-11	CERAMIC	0.1uF		50V
C409	1-126-795-11	ELECT	10uF	20%	50V
C411	1-126-795-11	ELECT	10uF	20%	50V
C412	1-164-159-11	CERAMIC	0.1uF		50V
< CAPACITOR >					
C457	1-126-795-11	ELECT	10uF	20%	50V
C458	1-164-159-11	CERAMIC	0.1uF		50V
C459	1-126-795-11	ELECT	10uF	20%	50V
C461	1-126-795-11	ELECT	10uF	20%	50V
C495	1-162-294-31	CERAMIC	0.001uF	10%	50V
< CAPACITOR >					
C496	1-162-282-31	CERAMIC	100PF	10%	50V
C498	1-126-786-11	ELECT	47uF	20%	16V
C499	1-126-786-11	ELECT	47uF	20%	16V
< CONNECTOR >					
CNP410	1-750-180-11	PIN, CONNECTOR (PC BOARD) 5P			
CNS403	1-695-093-11	SOCKET, CONNECTOR 9P			
CNS404	1-695-094-11	SOCKET, CONNECTOR 11P			
< IC >					
IC405	8-759-634-50	IC M5218AL			
IC406	8-759-805-15	IC LC7823			
< TRANSISTOR >					
Q401	8-729-922-37	TRANSISTOR 2SD2144S			
Q403	8-729-922-37	TRANSISTOR 2SD2144S			
Q451	8-729-922-37	TRANSISTOR 2SD2144S			
< RESISTOR >					
R410	1-249-441-11	CARBON	100K	5%	1/4W
R411	1-249-417-11	CARBON	1K	5%	1/4W
R412	1-249-425-11	CARBON	4.7K	5%	1/4W
R413	1-249-441-11	CARBON	100K	5%	1/4W
R416	1-249-441-11	CARBON	100K	5%	1/4W
< RESISTOR >					
R417	1-249-417-11	CARBON	1K	5%	1/4W
R418	1-249-425-11	CARBON	4.7K	5%	1/4W

The components identified by mark △ or dotted line with mark △ are critical for safety.
Replace only with part number specified.

Les composants identifiés par une marque △ sont critiques pour la sécurité. Ne les remplacer que par une pièce portant le numéro spécifié.

AUDIO SW

BALANCE

CONT (AS-1)

CTRL-A

DISPLAY

L.B. SW

Ref. No.	Part No.	Description			Remark
R460	1-249-441-11	CARBON	100K	5%	1/4W
R461	1-249-417-11	CARBON	1K	5%	1/4W
R462	1-249-425-11	CARBON	4.7K	5%	1/4W
R463	1-249-441-11	CARBON	100K	5%	1/4W
R466	1-249-441-11	CARBON	100K	5%	1/4W
R467	1-249-417-11	CARBON	1K	5%	1/4W
R468	1-249-417-11	CARBON	1K	5%	1/4W
R469	1-249-441-11	CARBON	100K	5%	1/4W
R476	1-249-425-11	CARBON	4.7K	5%	1/4W
R477	1-249-417-11	CARBON	1K	5%	1/4W
R478	1-249-441-11	CARBON	100K	5%	1/4W
R479	1-249-429-11	CARBON	10K	5%	1/4W
R480	1-249-441-11	CARBON	100K	5%	1/4W
R481	1-247-807-31	CARBON	100	5%	1/4W
R482	1-247-807-31	CARBON	100	5%	1/4W

*	1-665-478-11	BALANCE BOARD (D660Z/DE715)			
*	1-665-467-11	BALANCE BOARD (D560Z/DE615)			

< VARIABLE RESISTOR >					
RV402	1-225-447-11	RES, VAR, CARBON 100K/100K (BALANCE)			

*	1-665-458-11	CONT (AS-1) BOARD			

< CONNECTOR >					
CNP501	1-770-553-11	CONNECTOR, BOARD TO BOARD 11P			
CNP502	1-770-553-11	CONNECTOR, BOARD TO BOARD 11P			

*	A-4392-933-A	CTRL-A BOARD, COMPLETE (DE715:US,CND)			

< CAPACITOR >					
C1101	1-162-294-31	CERAMIC	0.001uF	10%	50V
C1102	1-162-294-31	CERAMIC	0.001uF	10%	50V
C1103	1-126-964-11	ELECT	10uF	20%	50V
C1104	1-162-294-31	CERAMIC	0.001uF	10%	50V
C1105	1-162-294-31	CERAMIC	0.001uF	10%	50V
C1106	1-126-964-11	ELECT	10uF	20%	50V
C1107	1-126-964-11	ELECT	10uF	20%	50V
< CONNECTOR >					
* CNS110	1-568-828-11	SOCKET, CONNECTOR 9P			
< DIODE >					
D1101	8-719-987-63	DIODE	1N4148M		
< IC >					
IC1101	8-759-912-77	IC	LM324N		
IC1102	8-759-388-26	IC	NJM2129D		
< JACK >					
J1101	1-563-330-11	JACK (MONITOR,CTRL S IN)			
J1102	1-563-330-11	JACK (VIDEO,CTRL S OUT)			
J1103	1-563-330-11	JACK (TV/DBS,CTRL S STATUS IN)			
J1104	1-563-330-11	JACK (VIDEO 2,CTRL S OUT)			

Ref. No.	Part No.	Description	Remark		
J1105	1-563-330-11	JACK (S-LINK,CTRL A1)			
< TRANSISTOR >					
Q1101	8-729-620-05	TRANSISTOR	2SC2603-EF		
Q1102	8-729-119-79	TRANSISTOR	2SC2785-FEK		
Q1103	8-729-119-79	TRANSISTOR	2SC2785-FEK		
Q1104	8-729-119-76	TRANSISTOR	2SA1175-HFE		
Q1105	8-729-119-76	TRANSISTOR	2SA1175-HFE		
Q1106	8-729-119-79	TRANSISTOR	2SC2785-FEK		
Q1107	8-729-119-76	TRANSISTOR	2SA1175-HFE		
Q1108	8-729-119-76	TRANSISTOR	2SA1175-HFE		
Q1109	8-729-119-76	TRANSISTOR	2SA1175-HFE		
< RESISTOR >					
R1101	1-249-393-11	CARBON	10	5%	1/4W
R1102	1-249-417-11	CARBON	1K	5%	1/4W
R1103	1-247-843-11	CARBON	3.3K	5%	1/4W
R1104	1-247-843-11	CARBON	3.3K	5%	1/4W
R1105	1-249-417-11	CARBON	1K	5%	1/4W
R1106	1-249-429-11	CARBON	10K	5%	1/4W
R1107	1-249-429-11	CARBON	10K	5%	1/4W
R1108	1-249-425-11	CARBON	4.7K	5%	1/4W
R1109	1-249-417-11	CARBON	1K	5%	1/4W
R1110	1-249-417-11	CARBON	1K	5%	1/4W
R1111	1-249-417-11	CARBON	1K	5%	1/4W
R1112	1-249-417-11	CARBON	1K	5%	1/4W
R1113	1-249-414-11	CARBON	560	5%	1/4W
R1114	1-249-414-11	CARBON	560	5%	1/4W
R1115	1-249-413-11	CARBON	470	5%	1/4W
R1116	1-249-413-11	CARBON	470	5%	1/4W
R1117	1-249-429-11	CARBON	10K	5%	1/4W
R1118	1-249-429-11	CARBON	10K	5%	1/4W
R1119	1-249-417-11	CARBON	1K	5%	1/4W
R1120	1-249-427-11	CARBON	6.8K	5%	1/4W
R1121	1-249-433-11	CARBON	22K	5%	1/4W
R1122	1-249-437-11	CARBON	47K	5%	1/4W

*	A-4392-893-A	DISPLAY BOARD, COMPLETE (D560Z/DE615)			
*	A-4392-942-A	DISPLAY BOARD, COMPLETE (D660Z)			
*	A-4392-918-A	DISPLAY BOARD, COMPLETE (DE715:US,CND)			
*	A-4392-919-A	DISPLAY BOARD, COMPLETE (DE715:AUS)			

L.B. SW BOARD					

*	3-386-245-11	HOLDER (FL) (D560Z/DE615)			
*	4-921-941-01	CUSHION (FL)			
*	4-981-656-01	HOLDER (C), FL INDICATION TUBE			
(D660Z/DE715)					
< CAPACITOR >					
C029	1-162-282-31	CERAMIC	100PF	10%	50V
(D660Z/DE715)					
C101	1-164-159-11	CERAMIC	0.1uF		50V
C102	1-164-159-11	CERAMIC	0.1uF		50V
C103	1-164-159-11	CERAMIC	0.1uF		50V
C104	1-126-959-11	ELECT	0.47uF	20%	50V
(D560Z/DE615)					
C104	1-164-159-11	CERAMIC	0.1uF		50V
(D660Z/DE715)					

DISPLAY

L.B. SW

Ref. No.	Part No.	Description	Remark	Ref. No.	Part No.	Description	Remark
C105	1-164-159-11	CERAMIC	0.1uF 50V	C186	1-162-282-31	CERAMIC 100PF 10% 50V	(D560Z/DE615)
C106	1-164-159-11	CERAMIC	0.1uF 50V	C187	1-162-282-31	CERAMIC 100PF 10% 50V	(D560Z/DE615)
C111	1-126-967-11	ELECT	47uF 20% 16V	C188	1-162-282-31	CERAMIC 100PF 10% 50V	(D560Z/DE615)
C111	1-126-786-11	ELECT	47uF 20% 16V	C189	1-162-282-31	CERAMIC 100PF 10% 50V	(D560Z/DE615)
C113	1-126-786-11	ELECT	47uF 20% 16V	C190	1-162-282-31	CERAMIC 100PF 10% 50V	(D560Z/DE615)
C114	1-164-159-11	CERAMIC	0.1uF 50V	C191	1-162-282-31	CERAMIC 100PF 10% 50V	(D560Z/DE615)
C115	1-104-905-11	CAPACITOR	0.22F 5.5V	C192	1-162-282-31	CERAMIC 100PF 10% 50V	(D560Z/DE615)
C116	1-164-159-11	CERAMIC	0.1uF 50V	C193	1-162-282-31	CERAMIC 100PF 10% 50V	(D560Z/DE615)
C117	1-164-159-11	CERAMIC	0.1uF 50V	C194	1-162-282-31	CERAMIC 100PF 10% 50V	(D560Z/DE615)
C120	1-162-282-31	CERAMIC	100PF 10% 50V	C195	1-162-282-31	CERAMIC 100PF 10% 50V	(D560Z/DE615)
C121	1-162-282-31	CERAMIC	100PF 10% 50V	C196	1-162-282-31	CERAMIC 100PF 10% 50V	(D560Z/DE615)
C122	1-162-282-31	CERAMIC	100PF 10% 50V	C197	1-162-282-31	CERAMIC 100PF 10% 50V	(D560Z/DE615)
C123	1-162-282-31	CERAMIC	100PF 10% 50V	C198	1-162-282-31	CERAMIC 100PF 10% 50V	(D560Z/DE615)
C124	1-162-282-31	CERAMIC	100PF 10% 50V	C199	1-162-282-31	CERAMIC 100PF 10% 50V	(D560Z/DE615)
C125	1-162-282-31	CERAMIC	100PF 10% 50V	< CONNECTOR >			
C126	1-162-282-31	CERAMIC	100PF 10% 50V	CNP101	1-779-365-11	CONNECTOR, PC BOARD (PLUG) 8P	
C127	1-162-282-31	CERAMIC	100PF 10% 50V	CNP103	1-779-366-11	CONNECTOR, BOARD TO BOARD 4P	
C128	1-162-282-31	CERAMIC	100PF 10% 50V	CNS102	1-770-397-11	HOUSING, CONNECTOR(PC BOARD)4P	
C130	1-162-282-31	CERAMIC	100PF 10% 50V	* CNS104	1-568-862-11	SOCKET, CONNECTOR 19P (D560Z/DE615)	
C131	1-162-282-31	CERAMIC	100PF 10% 50V	CNS104	1-569-308-11	SOCKET, CONNECTOR (L TYRE) 19P	(D660Z/DE715)
C132	1-126-177-11	ELECT	100uF 20% 10V	CNS105	1-568-802-11	SOCKET, CONNECTOR 19P (D560Z/DE615)	
C133	1-164-159-11	CERAMIC	0.1uF 50V	CNS105	1-691-650-11	SOCKET, CONNECTOR 19P (D660Z/DE715)	
C134	1-162-282-31	CERAMIC	100PF 10% 50V	CNS106	1-568-441-11	SOCKET, CONNECTOR 9P (D660Z/DE715)	
C135	1-126-795-11	ELECT	10uF 20% 50V	< DIODE >			
C136	1-162-282-31	CERAMIC	100PF 10% 50V	D101	8-719-313-45	LED SEL6810A-TH10 (PHONO)	
C137	1-162-282-31	CERAMIC	100PF 10% 50V	D102	8-719-313-45	LED SEL6810A-TH10 (TUNER)	
C138	1-162-282-31	CERAMIC	100PF 10% 50V	D103	8-719-313-45	LED SEL6810A-TH10 (CD)	
C139	1-162-282-31	CERAMIC	100PF 10% 50V	D104	8-719-313-45	LED SEL6810A-TH10 (DAT/MD)	
C140	1-126-786-11	ELECT	47uF 20% 16V	D105	8-719-313-45	LED SEL6810A-TH10 (TAPE)	
C141	1-164-159-11	CERAMIC	0.1uF 50V	D106	8-719-313-45	LED SEL6810A-TH10 (TV/DBS)	
C142	1-164-159-11	CERAMIC	0.1uF 50V	D107	8-719-313-45	LED SEL6810A-TH10 (VIDEO 2)	(D560Z/DE615)
C143	1-164-159-11	CERAMIC	0.1uF 50V	D108	8-719-313-45	LED SEL6810A-TH10 (VIDEO 1)	(D560Z/DE615)
C183	1-162-282-31	CERAMIC	100PF 10% 50V	D109	8-719-313-45	LED SEL6810A-TH10 (VIDEO 2)	(D660Z/DE715)
C184	1-162-282-31	CERAMIC	100PF 10% 50V	D110	8-719-313-45	LED SEL6810A-TH10 (VIDEO 1)	(D660Z/DE715)
C185	1-162-282-31	CERAMIC	100PF 10% 50V	D111	8-719-313-45	LED SEL6810A-TH10 (DIRECT PASS)	
				D112	8-719-064-63	LED SELU5823A-TP15 (5.1 INPUT)	
				D113	8-719-313-45	LED SEL6810A-TH10 (SUR)	
				D114	8-719-313-45	LED SEL6810A-TH10 (TONE)	
				D115	8-719-313-45	LED SEL6810A-TH10 (INDEX)	
				D117	8-719-313-45	LED SEL6810A-TH10 (BASS BOOST)	
				D119	8-719-987-63	DIODE 1N4148M	
				D120	8-719-200-82	DIODE 11ES2 (D560Z/DE615)	

Ref. No.	Part No.	Description	Remark	Ref. No.	Part No.	Description	Remark
D120	8-719-024-99	DIODE 11ES2-NTA2B (D660Z/DE715)		R126	1-249-425-11	CARBON 4.7K	5% 1/4W
D121	8-719-987-63	DIODE 1N4148M (D560Z/DE615)		R127	1-249-425-11	CARBON 4.7K	5% 1/4W
< FILTER >				R128	1-249-417-11	CARBON 1K	5% 1/4W (D660Z/DE715)
FL101	1-517-519-11	INDICATOR TUBE, FLUORESCENT (D660Z/DE715)		R128	1-249-429-11	CARBON 10K	5% 1/4W (D560Z/DE615)
FL101	1-517-672-11	INDICATOR TUBE, FLUORESCENT (D560Z/DE615)		R129	1-247-807-31	CARBON 100	5% 1/4W
< IC >				R130	1-249-429-11	CARBON 10K	5% 1/4W (D660Z/DE715)
IC101	8-759-459-83	IC NJL55H400		R131	1-249-419-11	CARBON 1.5K	5% 1/4W (D660Z/DE715)
IC102	8-759-442-92	IC M66004AFP-M6 (D660Z/DE715)		R132	1-249-417-11	CARBON 1K	5% 1/4W
IC103	8-759-458-11	IC MB90673PF-G-196-BND (D660Z/DE715)		R133	1-249-417-11	CARBON 1K	5% 1/4W (D660Z/DE715)
IC103	8-759-460-14	IC uPD780205GF-027-3BA (D560Z/DE615)		R133	1-247-807-31	CARBON 100	5% 1/4W (D560Z/DE615)
IC105	8-759-634-84	IC M50255P (D660Z/DE715)					
IC106	8-759-962-08	IC BA6208		R134	1-249-417-11	CARBON 1K	5% 1/4W (D660Z/DE715)
< COIL >				R134	1-247-807-31	CARBON 100	5% 1/4W (D560Z/DE615)
L101	1-410-509-11	INDUCTOR 10uH		R135	1-249-417-11	CARBON 1K	5% 1/4W (D660Z/DE715)
< TRANSISTOR >				R135	1-247-807-31	CARBON 100	5% 1/4W (D560Z/DE615)
Q101	8-729-900-36	TRANSISTOR DTC124ES		R136	1-249-417-11	CARBON 1K	5% 1/4W (D660Z/DE715)
Q102	8-729-119-76	TRANSISTOR 2SA1175-HFE					
Q103	8-729-900-36	TRANSISTOR DTC124ES (D560Z/DE615)		R136	1-247-807-31	CARBON 100	5% 1/4W (D560Z/DE615)
Q104	8-729-900-36	TRANSISTOR DTC124ES (D560Z/DE615)		R137	1-247-807-31	CARBON 100	5% 1/4W
Q105	8-729-900-36	TRANSISTOR DTC124ES		R138	1-249-417-11	CARBON 1K	5% 1/4W
< RESISTOR >				R139	1-247-807-31	CARBON 100	5% 1/4W
R100	1-249-437-11	CARBON 47K	5% 1/4W (D660Z/DE715)	R140	1-247-807-31	CARBON 100	5% 1/4W
R101	1-247-807-31	CARBON 100	5% 1/4W	R141	1-247-807-31	CARBON 100	5% 1/4W
R102	1-247-807-31	CARBON 100	5% 1/4W	R142	1-247-807-31	CARBON 100	5% 1/4W
R103	1-247-807-31	CARBON 100	5% 1/4W	R143	1-249-429-11	CARBON 10K	5% 1/4W (D660Z/DE715)
R104	1-247-807-31	CARBON 100	5% 1/4W	R143	1-249-417-11	CARBON 1K	5% 1/4W (D560Z/DE615)
R105	1-247-807-31	CARBON 100	5% 1/4W	R144	1-249-437-11	CARBON 47K	5% 1/4W (D660Z/DE715)
R106	1-247-807-31	CARBON 100	5% 1/4W				
R107	1-247-807-31	CARBON 100	5% 1/4W	R144	1-249-417-11	CARBON 1K	5% 1/4W (D560Z/DE615)
R108	1-247-807-31	CARBON 100	5% 1/4W	R145	1-249-433-11	CARBON 22K	5% 1/4W (D660Z/DE715)
R109	1-247-807-31	CARBON 100	5% 1/4W	R145	1-249-417-11	CARBON 1K	5% 1/4W (D560Z/DE615)
R110	1-247-807-31	CARBON 100	5% 1/4W	R146	1-247-807-31	CARBON 100	5% 1/4W (D660Z/DE715)
R111	1-247-807-31	CARBON 100	5% 1/4W	R146	1-249-417-11	CARBON 1K	5% 1/4W (D560Z/DE615)
R112	1-247-807-31	CARBON 100	5% 1/4W				
R113	1-247-807-31	CARBON 100	5% 1/4W	R147	1-247-807-31	CARBON 100	5% 1/4W (D660Z/DE715)
R114	1-247-807-31	CARBON 100	5% 1/4W	R147	1-249-417-11	CARBON 1K	5% 1/4W (D560Z/DE615)
R115	1-249-429-11	CARBON 10K	5% 1/4W (D660Z/DE715)	R148	1-247-807-31	CARBON 100	5% 1/4W (D660Z/DE715)
R116	1-247-807-31	CARBON 100	5% 1/4W (D660Z/DE715)	R148	1-249-417-11	CARBON 1K	5% 1/4W (D560Z/DE615)
R118	1-249-417-11	CARBON 1K	5% 1/4W (D660Z/DE715)	R149	1-247-807-31	CARBON 100	5% 1/4W (D660Z/DE715)
R119	1-249-417-11	CARBON 1K	5% 1/4W (D660Z/DE715)				
R120	1-249-417-11	CARBON 1K	5% 1/4W (D660Z/DE715)	R149	1-249-417-11	CARBON 1K	5% 1/4W (D560Z/DE615)
R121	1-249-417-11	CARBON 1K	5% 1/4W (D660Z/DE715)	R150	1-249-393-11	CARBON 10	5% 1/4W
R122	1-249-425-11	CARBON 4.7K	5% 1/4W				
R123	1-249-425-11	CARBON 4.7K	5% 1/4W				
R124	1-249-425-11	CARBON 4.7K	5% 1/4W				
R125	1-249-425-11	CARBON 4.7K	5% 1/4W				

Ref. No.	Part No.	Description		Remark
R151	1-249-429-11	CARBON	10K	5% 1/4W (D660Z/DE715)
R152	1-249-434-11	CARBON	27K	5% 1/4W (D660Z/DE715)
△ R153	1-249-385-11	CARBON	2.2	5% 1/6W F
△ R154	1-249-385-11	CARBON	2.2	5% 1/6W F
R155	1-249-411-11	CARBON	330	5% 1/4W
R156	1-249-411-11	CARBON	330	5% 1/4W
R157	1-249-411-11	CARBON	330	5% 1/4W
R158	1-249-411-11	CARBON	330	5% 1/4W
R159	1-249-437-11	CARBON	47K	5% 1/4W (D660Z/DE715)
R160	1-249-411-11	CARBON	330	5% 1/4W
R162	1-249-429-11	CARBON	10K	5% 1/4W
R163	1-247-807-31	CARBON	100	5% 1/4W (D660Z/DE715)
R164	1-249-429-11	CARBON	10K	5% 1/4W
R165	1-249-429-11	CARBON	10K	5% 1/4W
R166	1-249-429-11	CARBON	10K	5% 1/4W
R167	1-249-437-11	CARBON	47K	5% 1/4W (D660Z/DE715)
R168	1-249-437-11	CARBON	47K	5% 1/4W (D660Z/DE715)
R170	1-249-437-11	CARBON	47K	5% 1/4W (D660Z/DE715)
R171	1-249-437-11	CARBON	47K	5% 1/4W (D560Z/DE615)
R172	1-249-437-11	CARBON	47K	5% 1/4W (D560Z/DE615)
R188	1-249-411-11	CARBON	330	5% 1/4W
R189	1-249-413-11	CARBON	470	5% 1/4W
R190	1-249-415-11	CARBON	680	5% 1/4W
R191	1-249-417-11	CARBON	1K	5% 1/4W
R192	1-249-419-11	CARBON	1.5K	5% 1/4W
R193	1-249-421-11	CARBON	2.2K	5% 1/4W
R194	1-249-425-11	CARBON	4.7K	5% 1/4W
R195	1-249-411-11	CARBON	330	5% 1/4W
R196	1-249-413-11	CARBON	470	5% 1/4W
R197	1-249-415-11	CARBON	680	5% 1/4W
R198	1-249-417-11	CARBON	1K	5% 1/4W
R199	1-249-419-11	CARBON	1.5K	5% 1/4W
RR10	1-249-425-11	CARBON	4.7K	5% 1/4W
RR11	1-249-411-11	CARBON	330	5% 1/4W (D660Z/DE715:AUS)
RR12	1-249-413-11	CARBON	470	5% 1/4W (DE715:AUS)
RR13	1-249-415-11	CARBON	680	5% 1/4W (DE715:AUS)
RR14	1-249-417-11	CARBON	1K	5% 1/4W (DE715:AUS)
RR15	1-249-419-11	CARBON	1.5K	5% 1/4W (DE715:AUS)
RR101	1-249-437-11	CARBON	47K	5% 1/4W (D560Z/DE615)
RR102	1-249-437-11	CARBON	47K	5% 1/4W (D560Z/DE615)
RR103	1-249-437-11	CARBON	47K	5% 1/4W (D560Z/DE615)
RR104	1-249-437-11	CARBON	47K	5% 1/4W (D560Z/DE615)

Ref. No.	Part No.	Description		Remark
RR105	1-249-437-11	CARBON	47K	5% 1/4W (D560Z/DE615)
RR106	1-249-437-11	CARBON	47K	5% 1/4W (D560Z/DE615)
RR107	1-249-437-11	CARBON	47K	5% 1/4W (D560Z/DE615)
RR108	1-249-437-11	CARBON	47K	5% 1/4W (D560Z/DE615)
RR109	1-249-437-11	CARBON	47K	5% 1/4W (D560Z/DE615)
RR110	1-249-437-11	CARBON	47K	5% 1/4W (D560Z/DE615)
RR111	1-249-437-11	CARBON	47K	5% 1/4W (D560Z/DE615)
RR112	1-249-437-11	CARBON	47K	5% 1/4W (D560Z/DE615)
RR113	1-249-437-11	CARBON	47K	5% 1/4W (D560Z/DE615)
RR114	1-249-437-11	CARBON	47K	5% 1/4W (D560Z/DE615)
RR115	1-249-437-11	CARBON	47K	5% 1/4W (D560Z/DE615)
RR116	1-249-437-11	CARBON	47K	5% 1/4W (D560Z/DE615)
RR117	1-249-437-11	CARBON	47K	5% 1/4W (D560Z/DE615)
RR118	1-249-437-11	CARBON	47K	5% 1/4W (D560Z/DE615)
RR119	1-249-437-11	CARBON	47K	5% 1/4W (D560Z/DE615)
RR120	1-249-437-11	CARBON	47K	5% 1/4W (D560Z/DE615)
RR121	1-249-437-11	CARBON	47K	5% 1/4W (D560Z/DE615)
RR122	1-249-437-11	CARBON	47K	5% 1/4W (D560Z/DE615)
RR123	1-249-437-11	CARBON	47K	5% 1/4W (D560Z/DE615)
RR124	1-249-437-11	CARBON	47K	5% 1/4W (D560Z/DE615)
RR125	1-249-437-11	CARBON	47K	5% 1/4W (D560Z/DE615)
RR126	1-249-437-11	CARBON	47K	5% 1/4W (D560Z/DE615)
RR127	1-249-437-11	CARBON	47K	5% 1/4W (D560Z/DE615)
RR128	1-249-437-11	CARBON	47K	5% 1/4W (D560Z/DE615)
RR129	1-249-437-11	CARBON	47K	5% 1/4W (D560Z/DE615)
RR130	1-249-437-11	CARBON	47K	5% 1/4W (D560Z/DE615)
< SWITCH >				
S123	1-762-751-11	SWITCH, TACTILE (☐)		
S124	1-762-751-11	SWITCH, TACTILE (☐)		
S125	1-762-751-11	SWITCH, TACTILE (MEMORY)		
S126	1-762-751-11	SWITCH, TACTILE (FM MODE)		
S127	1-762-751-11	SWITCH, TACTILE (FM/AM)		
S128	1-762-751-11	SWITCH, TACTILE (DISPLAY)		
S129	1-762-751-11	SWITCH, TACTILE (☐)		

The components identified by mark △ or dotted line with mark △ are critical for safety.
Replace only with part number specified.

Les composants identifiés par une marque △ sont critiques pour la sécurité.
Ne les remplacer que par une pièce portant le numéro spécifié.

DISPLAY

L.B. SW

HP

REAR AMP

Ref. No.	Part No.	Description	Remark
S130	1-762-751-11	SWITCH, TACTILE (▽)	
S131	1-762-751-11	SWITCH, TACTILE (PRESET TUNING -)	
S132	1-762-751-11	SWITCH, TACTILE (TUNING -)	
S133	1-762-751-11	SWITCH, TACTILE (PRESET TUNING +)	
S134	1-762-751-11	SWITCH, TACTILE (TUNING +)	
S135	1-762-751-11	SWITCH, TACTILE (BASS BOOST)	
S151	1-762-751-11	SWITCH, TACTILE (POWER)	
< VIBRATOR >			
X101	1-567-819-11	VIBRATOR, CERAMIC (4.19MHz) (D660Z/DE715)	
X101	1-577-101-11	VIBRATOR, CERAMIC (4.19MHz) (D560Z/DE615)	

*	1-665-468-11	HP BOARD (D560Z/DE615)	
*	1-665-479-11	HP BOARD (D660Z/DE715)	

< CONNECTOR >			
* CNP702	1-564-518-11	PLUG, CONNECTOR 3P	
< JACK >			
J701	1-568-519-41	JACK, LARGE TYPE (PHONES)	

*	A-4392-894-A	REAR AMP BOARD, COMPLETE (D560Z/DE615)	
*	A-4392-920-A	REAR AMP BOARD, COMPLETE (D660Z/DE715:US,CND)	
*	A-4392-922-A	REAR AMP BOARD, COMPLETE (DE715:AUS) *****	
< CAPACITOR >			
C700	1-162-294-31	CERAMIC 0.001uF 10% 50V (US,CND)	
C701	1-126-964-11	ELECT 10uF 20% 50V	
C702	1-162-282-31	CERAMIC 100PF 10% 50V	
C703	1-102-233-00	CERAMIC 33PF 10% 500V	
C704	1-162-282-31	CERAMIC 100PF 10% 50V	
C705	1-126-933-11	ELECT 100uF 20% 10V	
C720	1-126-967-11	ELECT 47uF 20% 16V	
C721	1-107-597-11	CERAMIC 22PF 10% 500V	
C722	1-107-597-11	CERAMIC 22PF 10% 500V	
C723	1-162-286-31	CERAMIC 220PF 10% 50V	
C751	1-126-964-11	ELECT 10uF 20% 50V	
C752	1-162-282-31	CERAMIC 100PF 10% 50V	
C753	1-102-233-00	CERAMIC 33PF 10% 500V	
C754	1-162-282-31	CERAMIC 100PF 10% 50V	
C755	1-126-933-11	ELECT 100uF 20% 10V	
C770	1-126-967-11	ELECT 47uF 20% 16V	
C771	1-107-597-11	CERAMIC 22PF 10% 500V	
C772	1-107-597-11	CERAMIC 22PF 10% 500V	
C773	1-162-286-31	CERAMIC 220PF 10% 50V	
C793	1-126-923-11	ELECT 220uF 20% 10V	
C798	1-128-560-11	ELECT 22uF 20% 100V	
C799	1-128-560-11	ELECT 22uF 20% 100V	

Ref. No.	Part No.	Description	Remark
< CONNECTOR >			
CNP704	1-564-320-00	PIN, CONNECTOR (B2P-VH) 2P	
* CNP705	1-564-242-00	PIN, CONNECTOR 5P	
CNP706	1-564-320-00	PIN, CONNECTOR (B2P-VH) 2P	
* CNS704	1-564-709-11	PIN, CONNECTOR (SMALL TYPE) 7P (AUS)	
CNS704	1-564-510-11	PLUG, CONNECTOR 7P (US,CND)	
< DIODE >			
D701	8-719-987-63	DIODE 1N4148M	
D702	8-719-010-06	DIODE UZ-2.2BS	
D703	8-719-010-06	DIODE UZ-2.2BS	
D704	8-719-987-63	DIODE 1N4148M	
D751	8-719-987-63	DIODE 1N4148M	
D752	8-719-010-06	DIODE UZ-2.2BS	
D753	8-719-010-06	DIODE UZ-2.2BS	
D754	8-719-987-63	DIODE 1N4148M	
< IC >			
IC701	8-759-326-52	IC uPC2581V	
< TRANSISTOR >			
Q703	8-729-140-84	TRANSISTOR 2SC1841-PAFAEA	
Q704	8-729-119-76	TRANSISTOR 2SA1175-HFE	
Q705	8-729-141-30	TRANSISTOR 2SC3623A-LK	
Q706	8-749-010-25	IC MN2488-OPY-M	
Q707	8-749-010-26	IC MP1620-OPY-M	
Q708	8-729-140-82	TRANSISTOR 2SA988-PAFAEA	
Q754	8-729-119-76	TRANSISTOR 2SA1175-HFE	
Q755	8-729-141-30	TRANSISTOR 2SC3623A-LK	
Q756	8-749-010-25	IC MN2488-OPY-M	
Q757	8-749-010-26	IC MP1620-OPY-M	
Q758	8-729-140-82	TRANSISTOR 2SA988-PAFAEA	
< RESISTOR >			
R701	1-249-417-11	CARBON 1K 5% 1/4W	
R702	1-249-439-11	CARBON 68K 5% 1/4W	
R703	1-249-439-11	CARBON 68K 5% 1/4W	
R704	1-249-411-11	CARBON 330 5% 1/4W	
R721	1-249-437-11	CARBON 47K 5% 1/4W	
R722	1-249-421-11	CARBON 2.2K 5% 1/4W	
R723	1-249-414-11	CARBON 560 5% 1/4W	
△R724	1-249-408-11	CARBON 180 5% 1/4W	F
△R725	1-249-408-11	CARBON 180 5% 1/4W	F
△R726	1-233-352-41	ENCAPSULATED COMPONENT 0.22X2 2W	F
R727	1-247-850-11	CARBON 6.2K 5% 1/4W	
R728	1-249-419-11	CARBON 1.5K 5% 1/4W	
R732	1-249-437-11	CARBON 47K 5% 1/4W	
R751	1-249-417-11	CARBON 1K 5% 1/4W	
R752	1-249-439-11	CARBON 68K 5% 1/4W	
R753	1-249-439-11	CARBON 68K 5% 1/4W	
R754	1-249-411-11	CARBON 330 5% 1/4W	
R771	1-249-437-11	CARBON 47K 5% 1/4W	
R772	1-249-421-11	CARBON 2.2K 5% 1/4W	
R773	1-249-414-11	CARBON 560 5% 1/4W	
△R774	1-249-408-11	CARBON 180 5% 1/4W	F
△R775	1-249-408-11	CARBON 180 5% 1/4W	F

The components identified by mark △ or dotted line with mark △ are critical for safety. Replace only with part number specified.	Les composants identifiés par une marque △ sont critiques pour la sécurité. Ne les remplacer que par une pièce portant le numéro spécifié.
---	---

REAR AMP	S-A-SP	SECONDARY	SP
-----------------	---------------	------------------	-----------

Ref. No.	Part No.	Description	Remark
△ R776	1-233-352-41	ENCAPSULATED COMPONENT 0.22X2 2W	F
R777	1-247-850-11	CARBON 6.2K 5%	1/4W
R778	1-249-419-11	CARBON 1.5K 5%	1/4W
R782	1-249-437-11	CARBON 47K 5%	1/4W
R790	1-249-417-11	CARBON 1K 5%	1/4W
R793	1-249-435-11	CARBON 33K 5%	1/4W
R794	1-249-425-11	CARBON 4.7K 5%	1/4W
△ R798	1-249-393-11	CARBON 10 5%	1/4W F
△ R799	1-249-393-11	CARBON 10 5%	1/4W F

*	1-665-492-11	S-A-SP BOARD	

		< CONNECTOR >	
CNP703	1-695-089-11	PIN, CONNECTOR (PC BOARD) 11P	
CNS702	1-695-096-11	SOCKET, CONNECTOR 15P	
CNS905	1-695-092-11	SOCKET, CONNECTOR 7P	

*	1-665-487-11	SECONDARY BOARD	

	1-533-217-31	HOLDER, FUSE (AUS)	
		< CAPACITOR >	
C801	1-126-964-11	ELECT 10uF 20%	50V
			(US,CND)
C805	1-137-420-11	FILM 0.047uF 10%	100V
			(US,CND)
C805	1-130-781-00	FILM 0.22uF 10%	100V
			(AUS)
C806	1-137-420-11	FILM 0.047uF 10%	100V
			(US,CND)
C806	1-130-781-00	FILM 0.22uF 10%	100V
			(AUS)
		< CONNECTOR >	
* CNP801	1-564-905-11	PIN, CONNECTOR 9P	
		< DIODE >	
D801	8-719-302-38	DIODE RBV-602-01	
D802	8-719-024-99	DIODE 11ES2-NTA2B	
D803	8-719-024-99	DIODE 11ES2-NTA2B	
D804	8-719-024-99	DIODE 11ES2-NTA2B	
D805	8-719-024-99	DIODE 11ES2-NTA2B	
D806	8-719-014-66	DIODE UZP-5.6B	
		< FUSE >	
△ F950	1-532-506-51	FUSE, TIME LAG (T6.3AL/250V) (AUS)	
△ F951	1-532-506-51	FUSE, TIME LAG (T6.3AL/250V) (AUS)	
△ PS801	1-533-909-11	MICRO FUSE 4.0A	
△ PS802	1-533-909-11	MICRO FUSE 4.0A	

Ref. No.	Part No.	Description	Remark
*	A-4392-941-A	SP BOARD, COMPLETE (D560Z/D660Z)	
*	A-4392-913-A	SP BOARD, COMPLETE	
		(DE615/DE715:US,CND)	
*	A-4392-936-A	SP BOARD, COMPLETE (DE715 : AUS)	

		< CAPACITOR >	
C624	1-126-964-11	ELECT 10uF 20%	50V
C625	1-136-157-00	FILM 0.022uF 5%	50V
C626	1-136-153-00	FILM 0.01uF 5%	50V
C724	1-126-964-11	ELECT 10uF 20%	50V
C725	1-136-157-00	FILM 0.022uF 5%	50V
C726	1-136-153-00	FILM 0.01uF 5%	50V
C775	1-136-157-00	FILM 0.022uF 5%	50V
C794	1-126-967-11	ELECT 47uF 20%	50V
C795	1-126-941-11	ELECT 470uF 20%	25V
		< JACK >	
CNJ701	1-774-136-11	CONNECTOR, ROUND TYPE 6P	
		(WIRELESS REAR SPEAKER) (DE615/DE715)	
		< CONNECTOR >	
CNP603	1-564-320-00	PIN, CONNECTOR (B2P-VH) 2P	
CNS703	1-695-094-11	SOCKET, CONNECTOR 11P	
		< DIODE >	
D543	8-719-987-63	DIODE 1N4148M	
D605	8-719-987-63	DIODE 1N4148M	
D606	8-719-987-63	DIODE 1N4148M	
D607	8-719-987-63	DIODE 1N4148M	
D649	8-719-987-63	DIODE 1N4148M	
D705	8-719-987-63	DIODE 1N4148M	
D706	8-719-987-63	DIODE 1N4148M	
D749	8-719-987-63	DIODE 1N4148M	
		< IC >	
IC702	8-759-605-01	IC M5F78M18L (DE615/DE715:US,CND)	
IC702	8-759-634-65	IC M5278D09 (DE715 : AUS)	
		< JACK >	
J501	1-770-377-31	JACK, PIN 1P (WOOFER AUDIO OUT)	
		< COIL >	
L601	1-420-872-00	COIL, AIR-CORE	
L701	1-420-872-00	COIL, AIR-CORE	
L751	1-420-872-00	COIL, AIR-CORE	
		< TRANSISTOR >	
Q544	8-729-119-79	TRANSISTOR 2SC2785-FEK	
Q609	8-729-281-53	TRANSISTOR 2SC1815-GR	
Q610	8-729-900-63	TRANSISTOR DTA124ES	
Q611	8-729-900-63	TRANSISTOR DTA124ES	
Q645	8-729-119-79	TRANSISTOR 2SC2785-FEK	
Q709	8-729-281-53	TRANSISTOR 2SC1815-GR	
Q710	8-729-900-63	TRANSISTOR DTA124ES	
Q745	8-729-119-79	TRANSISTOR 2SC2785-FEK	
Q747	8-729-119-79	TRANSISTOR 2SC2785-FEK (DE615/DE715)	

The components identified by mark △ or dotted line with mark △ are critical for safety.
Replace only with part number specified.

Les composants identifiés par une marque △ sont critiques pour la sécurité.
Ne les remplacer que par une pièce portant le numéro spécifié.

Ref. No.	Part No.	Description	Remark				Ref. No.	Part No.	Description	Remark			
Q748	8-729-030-19	TRANSISTOR 2SB1640 (DE615/DE715)					*	1-665-481-11	SP.SW BOARD (D660Z/DE715)				
		< RESISTOR >					*	1-665-470-11	SP.SW BOARD (D560Z/DE615)				

R543	1-249-429-11	CARBON	10K	5%	1/4W				< CONNECTOR >				
R544	1-249-425-11	CARBON	4.7K	5%	1/4W								
△ R545	1-249-393-11	CARBON	10	5%	1/4W	F	* CNS101	1-695-808-11	CONNECTOR, PC BOARD 8P				
R546	1-249-421-11	CARBON	2.2K	5%	1/4W				< DIODE >				
R629	1-247-866-11	CARBON	30K	5%	1/4W								
R630	1-249-421-11	CARBON	2.2K	5%	1/4W		D152	8-719-987-63	DIODE 1N4148M				
R631	1-249-433-11	CARBON	22K	5%	1/4W		D153	8-719-987-63	DIODE 1N4148M				
△ R633	1-249-393-11	CARBON	10	5%	1/4W	F			< SWITCH >				
△ R634	1-249-389-11	CARBON	4.7	5%	1/4W	F							
R635	1-249-431-11	CARBON	15K	5%	1/4W		S136	1-762-751-11	SWITCH, TACTILE (DPC MODE)				
R636	1-249-433-11	CARBON	22K	5%	1/4W		S155	1-762-268-11	SWITCH, ROTARY (SPEAKERS)				
R646	1-249-432-11	CARBON	18K	5%	1/4W		*****						
R647	1-249-429-11	CARBON	10K	5%	1/4W								
R648	1-249-425-11	CARBON	4.7K	5%	1/4W		*	A-4392-915-A	STAND BY BOARD, COMPLETE (US,CND)				
△ R649	1-249-393-11	CARBON	10	5%	1/4W	F	*	A-4392-939-A	STAND BY BOARD, COMPLETE (AUS)				

R729	1-247-866-11	CARBON	30K	5%	1/4W								
R730	1-249-421-11	CARBON	2.2K	5%	1/4W								
R731	1-249-433-11	CARBON	22K	5%	1/4W			1-533-217-31	HOLDER, FUSE				
△ R733	1-249-393-11	CARBON	10	5%	1/4W	F			< CAPACITOR >				
△ R734	1-249-389-11	CARBON	4.7	5%	1/4W	F							
R735	1-249-431-11	CARBON	15K	5%	1/4W		C901	1-136-157-00	FILM 0.022uF 5% 50V				
R737	1-249-417-11	CARBON	1K	5%	1/4W		C902	1-136-157-00	FILM 0.022uF 5% 50V				
			(DE615/DE715)				C903	1-126-768-11	ELECT 2200uF 20% 16V				
R738	1-247-886-11	CARBON	200K	5%	1/4W		C904	1-126-960-11	ELECT 1uF 20% 50V				
			(DE615/DE715)				C905	1-126-959-11	ELECT 0.47uF 20% 50V				
R743	1-249-425-11	CARBON	4.7K	5%	1/4W		C906	1-124-464-11	ELECT 0.22uF 20% 50V				
			(DE615/DE715)				C913	1-164-159-11	CERAMIC 0.1uF 50V				
R744	1-249-425-11	CARBON	4.7K	5%	1/4W		C914	1-164-159-11	CERAMIC 0.1uF 50V				
			(DE615/DE715)						< JACK >				
R745	1-249-421-11	CARBON	2.2K	5%	1/4W		△ CNJ901	1-540-060-11	OUTLET, AC (POLAR) (AC OUTLET) (US,CND)				
R746	1-249-421-11	CARBON	2.2K	5%	1/4W				< CONNECTOR >				
			(DE615/DE715)										
R747	1-249-429-11	CARBON	10K	5%	1/4W		CNP903	1-564-321-00	PIN, CONNECTOR 2P				
R748	1-249-425-11	CARBON	4.7K	5%	1/4W		* CNP904	1-580-230-21	PIN, CONNECTOR (PC BOARD) 2P (AUS)				
△ R749	1-249-393-11	CARBON	10	5%	1/4W	F	CNP905	1-695-087-11	PIN, CONNECTOR (PC BOARD) 7P				
△ R783	1-249-393-11	CARBON	10	5%	1/4W	F			< DIODE >				
△ R784	1-249-389-11	CARBON	4.7	5%	1/4W	F							
R787	1-249-417-11	CARBON	1K	5%	1/4W		D901	8-719-024-99	DIODE 11ES2-NTA2B				
			(DE615/DE715)				D902	8-719-024-99	DIODE 11ES2-NTA2B				
R788	1-247-886-11	CARBON	200K	5%	1/4W		D903	8-719-024-99	DIODE 11ES2-NTA2B				
			(DE615/DE715)				D904	8-719-024-99	DIODE 11ES2-NTA2B				
		< RELAY >					D905	8-719-987-63	DIODE 1N4148M				
RY503	1-515-793-11	RELAY					D906	8-719-987-63	DIODE 1N4148M				
RY601	1-515-920-11	RELAY (24V)					D907	8-719-987-63	DIODE 1N4148M				
RY701	1-515-920-11	RELAY (24V)							< TERMINAL, EARTH >				
		< SWITCH >					* EB900	1-537-738-21	TERMINAL, EARTH				
S501	1-692-196-11	SWITCH, SLIDE							< FUSE >				
		(IMPEDANCE SELECTOR FRONT)					△ F901	1-532-506-51	FUSE, TIME LAG (T6.3AL/250V) (AUS)				
		< TERMINAL >					△ F901	1-533-310-11	FUSE, GLASS CYLINDRICAL(DIA.5)				
TM701	1-537-510-11	TERMINAL BOARD (SPEAKER) (6P)							(6.3A/125V) (US,CND)				
*****							△ F902	1-532-464-51	FUSE, TIME LAG (T2.5AL/250V) (AUS)				

The components identified by mark △ or dotted line with mark △ are critical for safety. Replace only with part number specified.	Les composants identifiés par une marque △sont critiques pour la sécurité. Ne les remplacer que par une pièce portant le numéro spécifié.
---	--

STAND BY

SURR

Ref. No.	Part No.	Description	Remark			
< IC >						
IC901	8-759-333-83	IC NJM2103D				
< TRANSISTOR >						
Q901	8-729-119-79	TRANSISTOR 2SC2785-FEK				
Q902	8-729-030-18	TRANSISTOR 2SD2525				
< RESISTOR >						
△ R901	1-202-725-00	SOLID	3.3M	10%	1/2W	(US,CND)
R902	1-249-429-11	CARBON	10K	5%	1/4W	
R903	1-249-425-11	CARBON	4.7K	5%	1/4W	
R904	1-249-417-11	CARBON	1K	5%	1/4W	
R905	1-249-428-11	CARBON	8.2K	5%	1/4W	
R906	1-249-421-11	CARBON	2.2K	5%	1/4W	
R908	1-249-433-11	CARBON	22K	5%	1/4W	
R909	1-249-439-11	CARBON	68K	5%	1/4W	
R910	1-249-437-11	CARBON	47K	5%	1/4W	
R912	1-249-430-11	CARBON	12K	5%	1/4W	
< RELAY >						
△ RY901	1-515-999-11	RELAY, POWER				
< TRANSFORMER >						
△ T902	1-450-361-11	TRANSFORMER, POWER (US,CND)				
△ T902	1-450-358-11	TRANSFORMER, POWER (AUS)				

*	A-4392-905-A	SURR BOARD, COMPLETE (US,CND)				
*	A-4392-931-A	SURR BOARD, COMPLETE (AUS)				

< CAPACITOR >						
C301	1-126-963-11	ELECT	4.7uF	20%	50V	
C302	1-162-282-31	CERAMIC	100PF	10%	50V	
C303	1-126-967-11	ELECT	47uF	20%	16V	
C304	1-130-480-00	MYLAR	0.0056uF	5%	50V	
C305	1-130-473-00	MYLAR	0.0015uF	5%	50V	
C306	1-126-960-11	ELECT	1uF	20%	50V	
C307	1-164-159-11	CERAMIC	0.1uF		50V	
C351	1-126-963-11	ELECT	4.7uF	20%	50V	
C352	1-162-282-31	CERAMIC	100PF	10%	50V	
C353	1-126-967-11	ELECT	47uF	20%	16V	
C354	1-130-480-00	MYLAR	0.0056uF	5%	50V	
C355	1-130-473-00	MYLAR	0.0015uF	5%	50V	
C356	1-126-960-11	ELECT	1uF	20%	50V	
C357	1-164-159-11	CERAMIC	0.1uF		50V	
C394	1-126-967-11	ELECT	47uF	20%	16V	
C395	1-126-967-11	ELECT	47uF	20%	16V	
C396	1-162-282-31	CERAMIC	100PF	10%	50V	
C397	1-162-294-31	CERAMIC	0.001uF	10%	50V	
C401	1-126-964-11	ELECT	10uF	20%	50V	
C402	1-126-964-11	ELECT	10uF	20%	50V	
C403	1-126-964-11	ELECT	10uF	20%	50V	
C404	1-162-199-31	CERAMIC	10PF	5%	50V	
C405	1-162-199-31	CERAMIC	10PF	5%	50V	
C406	1-126-964-11	ELECT	10uF	20%	50V	

Ref. No.	Part No.	Description	Remark			
C410	1-164-159-11	CERAMIC	0.1uF		50V	
C413	1-126-964-11	ELECT	10uF	20%	50V	
C420	1-136-165-00	FILM	0.1uF	5%	50V	
C421	1-126-933-11	ELECT	100uF	20%	16V	
C422	1-164-159-11	CERAMIC	0.1uF		50V	
C423	1-126-933-11	ELECT	100uF	20%	16V	
C424	1-164-159-11	CERAMIC	0.1uF		50V	
C425	1-128-551-11	ELECT	22uF	20%	25V	
C426	1-136-177-00	FILM	1uF	5%	50V	
C427	1-136-153-00	FILM	0.01uF	5%	50V	
C428	1-130-474-00	MYLAR	0.0018uF	5%	50V	
C429	1-136-163-00	FILM	0.068uF	5%	50V	
C430	1-136-165-00	FILM	0.1uF	5%	50V	
C431	1-136-165-00	FILM	0.1uF	5%	50V	
C432	1-136-163-00	FILM	0.068uF	5%	50V	
C433	1-136-153-00	FILM	0.01uF	5%	50V	
C434	1-130-474-00	MYLAR	0.0018uF	5%	50V	
C435	1-136-163-00	FILM	0.068uF	5%	50V	
C436	1-136-165-00	FILM	0.1uF	5%	50V	
C437	1-130-467-00	MYLAR	470PF	5%	50V	
C438	1-136-165-00	FILM	0.1uF	5%	50V	
C439	1-130-470-00	MYLAR	820PF	5%	50V	
C440	1-130-480-00	MYLAR	0.0056uF	5%	50V	
C441	1-136-161-00	FILM	0.047uF	5%	50V	
C442	1-136-175-00	FILM	0.68uF	5%	50V	
C443	1-136-169-00	FILM	0.22uF	5%	50V	
C444	1-136-169-00	FILM	0.22uF	5%	50V	
C445	1-126-963-11	ELECT	4.7uF	20%	50V	
C446	1-126-963-11	ELECT	4.7uF	20%	50V	
C447	1-136-169-00	FILM	0.22uF	5%	50V	
C448	1-136-169-00	FILM	0.22uF	5%	50V	
C449	1-136-165-00	FILM	0.1uF	5%	50V	
C450	1-136-161-00	FILM	0.047uF	5%	50V	
C451	1-126-964-11	ELECT	10uF	20%	50V	
C452	1-126-964-11	ELECT	10uF	20%	50V	
C453	1-126-964-11	ELECT	10uF	20%	50V	
C454	1-162-199-31	CERAMIC	10PF	5%	50V	
C455	1-162-199-31	CERAMIC	10PF	5%	50V	
C456	1-126-964-11	ELECT	10uF	20%	50V	
C460	1-164-159-11	CERAMIC	0.1uF		50V	
C463	1-126-964-11	ELECT	10uF	20%	50V	
C469	1-126-963-11	ELECT	4.7uF	20%	50V	
C470	1-136-161-00	FILM	0.047uF	5%	50V	
C471	1-136-165-00	FILM	0.1uF	5%	50V	
C472	1-136-165-00	FILM	0.1uF	5%	50V	
C473	1-136-157-00	FILM	0.022uF	5%	50V	
C474	1-136-157-00	FILM	0.022uF	5%	50V	
C475	1-136-165-00	FILM	0.1uF	5%	50V	
C476	1-130-469-00	MYLAR	680PF	5%	50V	
C477	1-126-967-11	ELECT	47uF	20%	16V	
C478	1-136-165-00	FILM	0.1uF	5%	50V	
C479	1-136-165-00	FILM	0.1uF	5%	50V	
C480	1-130-469-00	MYLAR	680PF	5%	50V	
C481	1-136-165-00	FILM	0.1uF	5%	50V	
C482	1-136-165-00	FILM	0.1uF	5%	50V	
C483	1-126-967-11	ELECT	47uF	20%	16V	

The components identified by mark △ or dotted line with mark △ are critical for safety.
Replace only with part number specified.

Les composants identifiés par une marque △ sont critiques pour la sécurité. Ne les remplacer que par une pièce portant le numéro spécifié.

Ref. No.	Part No.	Description				Remark	Ref. No.	Part No.	Description				Remark
C484	1-126-933-11	ELECT	100uF	20%	16V		D403	8-719-024-99	DIODE	11ES2-NTA2B			
C489	1-164-159-11	CERAMIC	0.1uF		50V								
C490	1-126-923-11	ELECT	220uF	20%	10V				< IC >				
C491	1-126-963-11	ELECT	4.7uF	20%	50V								
C492	1-130-481-00	MYLAR	0.0068uF	5%	50V		IC301	8-759-805-14	IC	LC7822			
							IC302	8-759-636-74	IC	M5218AP-22			
C493	1-136-165-00	FILM	0.1uF	5%	50V		IC401	8-759-392-97	IC	M62460FP			
C494	1-136-165-00	FILM	0.1uF	5%	50V		IC402	8-759-634-51	IC	M5218AP			
C497	1-162-215-31	CERAMIC	47PF	5%	50V		IC403	8-759-634-51	IC	M5218AP			
C498	1-164-159-11	CERAMIC	0.1uF		50V								
C499	1-126-964-11	ELECT	10uF	20%	50V		IC404	8-759-634-51	IC	M5218AP			
							IC407	8-759-168-20	IC	TA78L09S			
C501	1-126-964-11	ELECT	10uF	20%	50V		IC408	8-759-708-05	IC	NJM78L05A			
C502	1-162-282-31	CERAMIC	100PF	10%	50V		IC501	8-759-326-52	IC	uPC2581V			
C503	1-107-601-11	CERAMIC	33PF	5%	500V		IC502	8-759-072-32	IC	TC9184P			
C505	1-126-933-11	ELECT	100uF	20%	16V								
C508	1-136-163-00	FILM	0.068uF	5%	50V		IC601	8-749-011-16	IC	STK350-230			
C509	1-136-154-00	FILM	0.012uF	5%	50V				< JACK >				
C511	1-130-476-00	MYLAR	0.0027uF	5%	50V								
C512	1-136-157-00	FILM	0.022uF	5%	50V		J301	1-770-015-11	JACK, PIN 6P				
C513	1-136-171-00	FILM	0.33uF	5%	50V				(DAT/MD REC OUT,CD IN,PHONO IN)				
C514	1-136-159-00	FILM	0.033uF	5%	50V		J302	1-774-411-11	JACK, PIN 6P (TAPE IN/OUT,DAT/MD IN)				
C527	1-126-964-11	ELECT	10uF	20%	50V				< COIL >				
C539	1-162-282-31	CERAMIC	100PF	10%	50V								
C551	1-126-964-11	ELECT	10uF	20%	50V		L401	1-410-509-11	INDUCTOR	10uH			
C552	1-162-282-31	CERAMIC	100PF	10%	50V		L402	1-410-509-11	INDUCTOR	10uH			
C553	1-107-601-11	CERAMIC	33PF	5%	500V		L403	1-410-509-11	INDUCTOR	10uH			
C555	1-126-933-11	ELECT	100uF	20%	16V				< TRANSISTOR >				
C558	1-136-163-00	FILM	0.068uF	5%	50V								
C559	1-136-154-00	FILM	0.012uF	5%	50V		Q402	8-729-922-37	TRANSISTOR	2SD2144S			
C561	1-130-476-00	MYLAR	0.0027uF	5%	50V		Q410	8-729-119-79	TRANSISTOR	2SC2785-FEK			
C562	1-136-157-00	FILM	0.022uF	5%	50V		Q411	8-729-900-63	TRANSISTOR	DTA124ES			
							Q412	8-729-900-63	TRANSISTOR	DTA124ES			
C563	1-136-171-00	FILM	0.33uF	5%	50V		Q413	8-729-900-63	TRANSISTOR	DTA124ES			
C564	1-136-159-00	FILM	0.033uF	5%	50V								
C577	1-126-964-11	ELECT	10uF	20%	50V		Q414	8-729-900-63	TRANSISTOR	DTA124ES			
C589	1-162-282-31	CERAMIC	100PF	10%	50V		Q415	8-729-900-36	TRANSISTOR	DTC124ES			
C592	1-126-967-11	ELECT	47uF	20%	16V		Q416	8-729-900-36	TRANSISTOR	DTC124ES			
							Q452	8-729-922-37	TRANSISTOR	2SD2144S			
C593	1-126-923-11	ELECT	220uF	20%	10V		Q501	8-729-202-67	TRANSISTOR	2SK246-GR3			
C594	1-128-560-11	ELECT	22uF	20%	100V								
C595	1-128-560-11	ELECT	22uF	20%	100V		Q502	8-729-141-30	TRANSISTOR	2SC3623A-LK			
C596	1-164-159-11	CERAMIC	0.1uF		50V		Q503	8-729-140-84	TRANSISTOR	2SC1841-PAFAEA			
C597	1-162-282-31	CERAMIC	100PF	10%	50V		Q551	8-729-202-67	TRANSISTOR	2SK246-GR3			
							Q552	8-729-141-30	TRANSISTOR	2SC3623A-LK			
C599	1-126-967-11	ELECT	47uF	20%	16V								
C601	1-126-964-11	ELECT	10uF	20%	50V				< RESISTOR >				
C602	1-162-282-31	CERAMIC	100PF	10%	50V								
C603	1-102-989-00	CERAMIC	68PF	5%	500V		R301	1-249-409-11	CARBON	220	5%	1/4W	
C604	1-164-040-11	CERAMIC	4PF	0.25PF	50V		R302	1-249-441-11	CARBON	100K	5%	1/4W	
							R303	1-249-441-11	CARBON	100K	5%	1/4W	
C605	1-126-967-11	ELECT	47uF	20%	16V		R304	1-249-416-11	CARBON	820	5%	1/4W	
C606	1-102-989-00	CERAMIC	68PF	5%	500V		R305	1-247-897-11	CARBON	560K	5%	1/4W	
		< CONNECTOR >					R306	1-249-437-11	CARBON	47K	5%	1/4W	
							R307	1-249-441-11	CARBON	100K	5%	1/4W	
CNP303	1-695-090-11	PIN, CONNECTOR (PC BOARD) 13P					R308	1-247-807-31	CARBON	100	5%	1/4W	
CNP403	1-695-088-11	PIN, CONNECTOR (PC BOARD) 9P					R310	1-249-421-11	CARBON	2.2K	5%	1/4W	
CNP404	1-695-089-11	PIN, CONNECTOR (PC BOARD) 11P					R311	1-249-417-11	CARBON	1K	5%	1/4W	
CNS106	1-569-323-11	SOCKET, CONNECTOR 19P											
CNS401	1-569-323-11	SOCKET, CONNECTOR 19P					R312	1-249-417-11	CARBON	1K	5%	1/4W	
							R313	1-249-417-11	CARBON	1K	5%	1/4W	
CNS501	1-770-404-11	HOUSING,CONNECTOR(PC BOARD)11P					R314	1-249-417-11	CARBON	1K	5%	1/4W	
CNS601	1-770-404-11	HOUSING,CONNECTOR(PC BOARD)11P					R315	1-249-429-11	CARBON	10K	5%	1/4W	
		< DIODE >					R351	1-249-409-11	CARBON	220	5%	1/4W	
D401	8-719-987-63	DIODE	1N4148M				R352	1-249-441-11	CARBON	100K	5%	1/4W	
D402	8-719-987-63	DIODE	1N4148M				R353	1-249-441-11	CARBON	100K	5%	1/4W	

SURR

Ref. No.	Part No.	Description				Remark	Ref. No.	Part No.	Description				Remark
R354	1-249-416-11	CARBON	820	5%	1/4W		R457	1-249-441-11	CARBON	100K	5%	1/4W	
R355	1-247-897-11	CARBON	560K	5%	1/4W								
R356	1-249-437-11	CARBON	47K	5%	1/4W		R458	1-249-429-11	CARBON	10K	5%	1/4W	
							R459	1-249-433-11	CARBON	22K	5%	1/4W	
R357	1-249-441-11	CARBON	100K	5%	1/4W		R464	1-249-417-11	CARBON	1K	5%	1/4W	
R358	1-247-807-31	CARBON	100	5%	1/4W		R465	1-249-425-11	CARBON	4.7K	5%	1/4W	
R360	1-249-421-11	CARBON	2.2K	5%	1/4W		R475	1-247-872-11	CARBON	51K	5%	1/4W	
R361	1-249-417-11	CARBON	1K	5%	1/4W								
R362	1-249-417-11	CARBON	1K	5%	1/4W		R483	1-249-441-11	CARBON	100K	5%	1/4W	
							R484	1-249-441-11	CARBON	100K	5%	1/4W	
R363	1-249-417-11	CARBON	1K	5%	1/4W		R485	1-249-441-11	CARBON	100K	5%	1/4W	
R364	1-249-417-11	CARBON	1K	5%	1/4W		R486	1-249-437-11	CARBON	47K	5%	1/4W	
R365	1-249-429-11	CARBON	10K	5%	1/4W		R487	1-249-437-11	CARBON	47K	5%	1/4W	
R394	1-247-807-31	CARBON	100	5%	1/4W								
R395	1-247-807-31	CARBON	100	5%	1/4W		R488	1-249-437-11	CARBON	47K	5%	1/4W	
							R489	1-249-437-11	CARBON	47K	5%	1/4W	
R396	1-249-417-11	CARBON	1K	5%	1/4W		R490	1-249-433-11	CARBON	22K	5%	1/4W	
R397	1-249-425-11	CARBON	4.7K	5%	1/4W		R491	1-249-429-11	CARBON	10K	5%	1/4W	
R401	1-249-433-11	CARBON	22K	5%	1/4W		R492	1-249-416-11	CARBON	820	5%	1/4W	
R402	1-249-434-11	CARBON	27K	5%	1/4W								
R403	1-249-417-11	CARBON	1K	5%	1/4W		R493	1-249-417-11	CARBON	1K	5%	1/4W	
							R494	1-249-417-11	CARBON	1K	5%	1/4W	
R404	1-249-425-11	CARBON	4.7K	5%	1/4W		R495	1-249-421-11	CARBON	2.2K	5%	1/4W	
R405	1-249-440-11	CARBON	82K	5%	1/4W		R496	1-249-421-11	CARBON	2.2K	5%	1/4W	
R406	1-247-895-00	CARBON	470K	5%	1/4W		R497	1-247-887-00	CARBON	220K	5%	1/4W	
R407	1-249-441-11	CARBON	100K	5%	1/4W								
R408	1-249-429-11	CARBON	10K	5%	1/4W		R498	1-247-887-00	CARBON	220K	5%	1/4W	
							R499	1-249-417-11	CARBON	1K	5%	1/4W	
R409	1-249-433-11	CARBON	22K	5%	1/4W		R500	1-249-417-11	CARBON	1K	5%	1/4W	
R414	1-249-417-11	CARBON	1K	5%	1/4W		R501	1-249-417-11	CARBON	1K	5%	1/4W	
R415	1-249-425-11	CARBON	4.7K	5%	1/4W		R502	1-249-439-11	CARBON	68K	5%	1/4W	
R426	1-249-429-11	CARBON	10K	5%	1/4W								
R427	1-249-429-11	CARBON	10K	5%	1/4W		R503	1-249-439-11	CARBON	68K	5%	1/4W	
							R504	1-249-411-11	CARBON	330	5%	1/4W	
R428	1-247-903-00	CARBON	1M	5%	1/4W		R508	1-249-436-11	CARBON	39K	5%	1/4W	
R429	1-247-872-11	CARBON	51K	5%	1/4W		R509	1-247-903-00	CARBON	1M	5%	1/4W	
R430	1-247-887-00	CARBON	220K	5%	1/4W		R510	1-249-425-11	CARBON	4.7K	5%	1/4W	
R431	1-247-864-11	CARBON	24K	5%	1/4W								
R432	1-247-864-11	CARBON	24K	5%	1/4W		R511	1-249-434-11	CARBON	27K	5%	1/4W	
							R513	1-249-426-11	CARBON	5.6K	5%	1/4W	
R433	1-247-891-00	CARBON	330K	5%	1/4W		R514	1-249-418-11	CARBON	1.2K	5%	1/4W	
R434	1-249-437-11	CARBON	47K	5%	1/4W		R515	1-249-441-11	CARBON	100K	5%	1/4W	
R435	1-249-431-11	CARBON	15K	5%	1/4W		R516	1-247-843-11	CARBON	3.3K	5%	1/4W	
R436	1-247-852-11	CARBON	7.5K	5%	1/4W								
R437	1-249-437-11	CARBON	47K	5%	1/4W		R517	1-247-883-00	CARBON	150K	5%	1/4W	
							R518	1-249-427-11	CARBON	6.8K	5%	1/4W	
R438	1-249-431-11	CARBON	15K	5%	1/4W		R519	1-249-413-11	CARBON	470	5%	1/4W	
R439	1-247-852-11	CARBON	7.5K	5%	1/4W		R536	1-247-897-11	CARBON	560K	5%	1/4W	
R440	1-259-880-11	CARBON	2.2M	5%	1/4W		R537	1-249-417-11	CARBON	1K	5%	1/4W	
R441	1-249-441-11	CARBON	100K	5%	1/4W								
R442	1-247-883-00	CARBON	150K	5%	1/4W		R551	1-249-417-11	CARBON	1K	5%	1/4W	
							R552	1-249-439-11	CARBON	68K	5%	1/4W	
R443	1-249-431-11	CARBON	15K	5%	1/4W		R553	1-249-439-11	CARBON	68K	5%	1/4W	
R444	1-249-429-11	CARBON	10K	5%	1/4W		R554	1-249-411-11	CARBON	330	5%	1/4W	
R445	1-249-429-11	CARBON	10K	5%	1/4W		R555	1-249-419-11	CARBON	1.5K	5%	1/4W	
R446	1-249-419-11	CARBON	1.5K	5%	1/4W								
R447	1-249-429-11	CARBON	10K	5%	1/4W		△ R556	1-249-393-11	CARBON	10	5%	1/4W	F
							△ R557	1-249-393-11	CARBON	10	5%	1/4W	F
R448	1-249-429-11	CARBON	10K	5%	1/4W		R558	1-249-436-11	CARBON	39K	5%	1/4W	
R449	1-249-425-11	CARBON	4.7K	5%	1/4W		R559	1-247-903-00	CARBON	1M	5%	1/4W	
R450	1-249-441-11	CARBON	100K	5%	1/4W		R560	1-249-425-11	CARBON	4.7K	5%	1/4W	
R451	1-249-433-11	CARBON	22K	5%	1/4W								
R452	1-249-434-11	CARBON	27K	5%	1/4W		R561	1-249-434-11	CARBON	27K	5%	1/4W	
							R563	1-249-426-11	CARBON	5.6K	5%	1/4W	
R453	1-249-417-11	CARBON	1K	5%	1/4W		R564	1-249-418-11	CARBON	1.2K	5%	1/4W	
R454	1-249-425-11	CARBON	4.7K	5%	1/4W		R565	1-249-441-11	CARBON	100K	5%	1/4W	
R455	1-249-440-11	CARBON	82K	5%	1/4W		R566	1-247-843-11	CARBON	3.3K	5%	1/4W	
R456	1-247-895-00	CARBON	470K	5%	1/4W								

<p>The components identified by mark △ or dotted line with mark △ are critical for safety. Replace only with part number specified.</p>	<p>Les composants identifiés par une marque △ sont critiques pour la sécurité. Ne les remplacer que par une pièce portant le numéro spécifié.</p>
---	---

Surr

Surr-Audio

SW

Video

Ref. No.	Part No.	Description	Remark			Ref. No.	Part No.	Description	Remark		
R567	1-247-883-00	CARBON	150K	5%	1/4W	R182	1-249-411-11	CARBON	330	5%	1/4W
R568	1-249-427-11	CARBON	6.8K	5%	1/4W	R183	1-249-413-11	CARBON	470	5%	1/4W
R569	1-249-413-11	CARBON	470	5%	1/4W						
R591	1-247-897-11	CARBON	560K	5%	1/4W	R184	1-249-415-11	CARBON	680	5%	1/4W
R592	1-249-425-11	CARBON	4.7K	5%	1/4W	R185	1-249-417-11	CARBON	1K	5%	1/4W
						R186	1-249-419-11	CARBON	1.5K	5%	1/4W
R593	1-249-435-11	CARBON	33K	5%	1/4W	R187	1-249-421-11	CARBON	2.2K	5%	1/4W
R594	1-249-425-11	CARBON	4.7K	5%	1/4W			< SWITCH >			
R595	1-247-903-00	CARBON	1M	5%	1/4W	S101	1-762-751-11	SWITCH, TACTILE (1)			
R596	1-249-419-11	CARBON	1.5K	5%	1/4W	S102	1-762-751-11	SWITCH, TACTILE (4)			
R599	1-249-425-11	CARBON	4.7K	5%	1/4W	S103	1-762-751-11	SWITCH, TACTILE (7)			
						S104	1-762-751-11	SWITCH, TACTILE (0)			
R601	1-249-417-11	CARBON	1K	5%	1/4W	S105	1-762-751-11	SWITCH, TACTILE (DIRECT PASS)			
R602	1-249-439-11	CARBON	68K	5%	1/4W						
R603	1-249-411-11	CARBON	330	5%	1/4W	S106	1-762-751-11	SWITCH, TACTILE (GENRE)			
R604	1-249-439-11	CARBON	68K	5%	1/4W	S107	1-762-751-11	SWITCH, TACTILE (SET UP)			
R605	1-249-413-11	CARBON	470	5%	1/4W	S108	1-762-751-11	SWITCH, TACTILE (MODE)			
		< RELAY >				S109	1-762-751-11	SWITCH, TACTILE (2)			
RY401	1-515-614-11	RELAY				S110	1-762-751-11	SWITCH, TACTILE (5)			
		< TERMINAL >									
TM401	1-694-265-11	TERMINAL BOARD, ANT (ANTENNA) (US,CND)				S111	1-762-751-11	SWITCH, TACTILE (8)			
TM401	1-694-266-11	TERMINAL BOARD, ANT (ANTENNA) (AUS)				S112	1-762-751-11	SWITCH, TACTILE (DIRECT)			
		< TUNER >				S113	1-762-751-11	SWITCH, TACTILE (AUDIO FUNCTION <)			
TU401	1-233-592-11	TUNER (US,CND)				S114	1-762-751-11	SWITCH, TACTILE (SOUND FIELD ON/OFF)			
TU401	1-693-377-11	TUNER (AUS)				S115	1-762-751-11	SWITCH, TACTILE (AUDIO FUNCTION >)			
		< VIBRATOR >									
X401	1-567-819-11	VIBRATOR, CERAMIC (4MHz)				S116	1-762-751-11	SWITCH, TACTILE (3)			
*****						S117	1-762-751-11	SWITCH, TACTILE (6)			
*	1-665-490-11	SURR-AUDIO BOARD				S118	1-762-751-11	SWITCH, TACTILE (9)			
		*****				S119	1-762-751-11	SWITCH, TACTILE (SHIFT)			
		< CONNECTOR >				S120	1-762-751-11	SWITCH, TACTILE (VIDEO FUNCTION <)			
CNP302	1-695-090-11	PIN, CONNECTOR (PC BOARD) 13P				S121	1-762-751-11	SWITCH, TACTILE (5.1/DVD INPUT)			
CNS303	1-695-095-11	SOCKET, CONNECTOR 13P				S122	1-762-751-11	SWITCH, TACTILE (VIDEO FUNCTION >)			
*****						*****					
*	A-4392-908-A	SW BOARD, COMPLETE				*	A-4392-897-A	VIDEO BOARD, COMPLETE (D560Z/DE615)			
		*****				*	A-4392-924-A	VIDEO BOARD, COMPLETE (D660Z/DE715)			
		< CONNECTOR >						*****			
CNS103	1-770-397-11	HOUSING, CONNECTOR(PC BOARD)4P						< CAPACITOR >			
		< RESISTOR >				C201	1-126-960-11	ELECT	1uF	20%	50V
R169	1-249-411-11	CARBON	330	5%	1/4W	C202	1-126-960-11	ELECT	1uF	20%	50V
R170	1-249-413-11	CARBON	470	5%	1/4W	C203	1-126-960-11	ELECT	1uF	20%	50V
R171	1-249-415-11	CARBON	680	5%	1/4W	C204	1-126-964-11	ELECT	10uF	20%	50V
R172	1-249-417-11	CARBON	1K	5%	1/4W	C205	1-126-964-11	ELECT	10uF	20%	50V
R173	1-249-419-11	CARBON	1.5K	5%	1/4W						
						C206	1-126-964-11	ELECT	10uF	20%	50V
R174	1-249-421-11	CARBON	2.2K	5%	1/4W	C207	1-126-933-11	ELECT	100uF	20%	16V
R175	1-249-425-11	CARBON	4.7K	5%	1/4W	C208	1-126-933-11	ELECT	100uF	20%	16V
R176	1-249-411-11	CARBON	330	5%	1/4W	C209	1-164-159-11	CERAMIC	0.1uF		50V
R177	1-249-413-11	CARBON	470	5%	1/4W	C210	1-164-159-11	CERAMIC	0.1uF		50V
R178	1-249-415-11	CARBON	680	5%	1/4W						
						C212	1-164-159-11	CERAMIC	0.1uF		50V
R179	1-249-417-11	CARBON	1K	5%	1/4W	C214	1-126-960-11	ELECT	1uF	20%	50V
R180	1-249-419-11	CARBON	1.5K	5%	1/4W			< CONNECTOR >			
R181	1-249-421-11	CARBON	2.2K	5%	1/4W	CNS201	1-750-179-11	SOCKET, CONNECTOR 5P			
								< IC >			
						IC201	8-759-061-95	IC SN761200			
								< JACK >			
						J201	1-766-399-11	JACK, PIN 3P (MONITOR VIDEO OUT, VIDEO1 VIDEO IN OUT)			

VIDEO

VOL

Ref. No.	Part No.	Description	Remark			Ref. No.	Part No.	Description	Remark	
J202	1-766-400-11	JACK, PIN 2P (VIDEO2 VIDEO IN OUT)				MISCELLANEOUS				
J203	1-766-400-11	JACK, PIN 2P (TV/DBS VIDEO IN, 5.1/DVD VIDEO IN)				*****				
< COIL >										
L201	1-410-521-11	INDUCTOR				100uH	19	1-773-130-11	WIRE (FLAT TYPE) (19 CORE) (100mm)	
L202	1-410-521-11	INDUCTOR	100uH	20	1-769-928-11	WIRE (FLAT TYPE) (9 CORE) (DE715:US,CND)				
< TRANSISTOR >						22	1-773-115-11	WIRE (FLAT TYPE) (19 CORE) (320mm)		
Q201	8-729-119-76	TRANSISTOR	2SA1175-HFE	57	1-773-108-11	WIRE (FLAT TYPE) (19 CORE) (160mm)				
Q202	8-729-620-05	TRANSISTOR	2SC2603-EF	△ 60	1-696-847-11	CORD, POWER (AUS)				
Q203	8-729-620-05	TRANSISTOR	2SC2603-EF	△ 60	1-769-743-11	CORD, POWER (US,CND)				
Q204	8-729-119-76	TRANSISTOR	2SA1175-HFE	103	1-533-217-31	HOLDER, FUSE				
Q205	8-729-119-76	TRANSISTOR	2SA1175-HFE	△ CNJ909	1-251-416-11	OUTLET, A.C. (AUS)				
< RESISTOR >						△ F901	1-532-506-51	FUSE, TIME LAG (T6.3AL/250V) (AUS)		
Q206	8-729-620-05	TRANSISTOR	2SC2603-EF	△ F901	1-533-310-11	FUSE, GLASS CYLINDRICAL(DIA.5)				
						(6.3A/125V) (US,CND)				
R201	1-249-403-11	CARBON	68	5%	1/4W	△ F902	1-532-464-51	FUSE, TIME LAG (T2.5AL/250V) (AUS)		
R202	1-249-403-11	CARBON	68	5%	1/4W	△ F950	1-532-506-51	FUSE, TIME LAG (T6.3AL/250V) (AUS)		
R203	1-249-403-11	CARBON	68	5%	1/4W	△ F951	1-532-506-51	FUSE, TIME LAG (T6.3AL/250V) (AUS)		
R204	1-249-403-11	CARBON	68	5%	1/4W	FL101	1-517-519-11	INDICATOR TUBE, FLUORESCENT		
R205	1-249-403-11	CARBON	68	5%	1/4W	(D660Z/DE715)				
						FL101	1-517-672-11	INDICATOR TUBE, FLUORESCENT		
R206	1-249-403-11	CARBON	68	5%	1/4W	(D560Z/DE615)				
R207	1-249-403-11	CARBON	68	5%	1/4W	△ T902	1-431-274-11	TRANSFORMER, POWER (US,CND)		
R208	1-249-430-11	CARBON	12K	5%	1/4W	△ T902	1-431-288-11	TRANSFORMER, POWER (AUS)		
R209	1-249-419-11	CARBON	1.5K	5%	1/4W	*****				
R210	1-249-426-11	CARBON	5.6K	5%	1/4W	ACCESSORIES & PACKING MATERIALS				

R211	1-249-430-11	CARBON	12K	5%	1/4W	1-475-134-11	REMOTE COMMANDER (RM-P501)			
R212	1-249-419-11	CARBON	1.5K	5%	1/4W	(D660Z/DE715)				
R213	1-249-426-11	CARBON	5.6K	5%	1/4W	1-475-135-11	REMOTE COMMANDER (RM-U501)			
R214	1-249-403-11	CARBON	68	5%	1/4W	(D560Z/DE615)				
R215	1-249-403-11	CARBON	68	5%	1/4W	1-501-721-11	ANTENNA (LOOP)			
R216	1-247-807-31	CARBON	100	5%	1/4W	1-776-258-11	CORD, AVC CONNECTION (AUDIO,VIDEO, CONTROL S,150cm) (DE715:US,CND)			
R217	1-249-430-11	CARBON	12K	5%	1/4W	1-777-172-11	CORD, CONNECTION (CONTROL A1,100cm) (DE715:US,CND)			
R218	1-249-419-11	CARBON	1.5K	5%	1/4W	3-810-765-11	MANUAL,COMMONNESS INSTRUCTION (CONTROL A1) (ENGLISH) (DE715:US)			
R219	1-249-426-11	CARBON	5.6K	5%	1/4W	3-810-765-21	MANUAL,COMMONNESS INSTRUCTION (CONTROL A1) (ENGLISH,FRENCH,GERMAN, SWEDISH,DUTCH,SPANISH,ITALIAN, PORTUGUESE,CHINESE) (DE715:CND)			
R220	1-249-403-11	CARBON	68	5%	1/4W					

*	1-665-477-11	VOL BOARD (D660Z/DE715)				3-860-516-11	MANUAL, INSTRUCTION (ENGLISH)			
*	1-665-466-11	VOL BOARD (D560Z/DE615)				3-860-516-21	MANUAL, INSTRUCTION (FRENCH) (CND)			
*****		4-983-536-01				LID,BATTERY (FOR RM-P501,U501)				
< CAPACITOR >		*****								
C497	1-126-964-11	ELECT	10uF	20%	50V	*****				
< CONNECTOR >						*****				
CNP102	1-770-388-11	PIN, CONNECTOR (PC BOARD) 4P				#1	7-685-646-79	SCREW +BVTP 3X8 TYPE2 TT(B)		
CNS402	1-569-323-11	SOCKET, CONNECTOR 19P				#2	7-685-872-09	SCREW +BVTT 3X8 (S)		
CNS410	1-750-179-11	SOCKET, CONNECTOR 5P				#3	7-685-881-09	SCREW +BVTT 4X8 (S)		
< VARIABLE RESISTOR >										
RV401	1-225-445-11	RES, VAR, CARBON 100KX6								
(MASTER VOLUME)										

The components identified by mark △ or dotted line with mark △ are critical for safety. Replace only with part number specified.	Les composants identifiés par une marque △ sont critiques pour la sécurité. Ne les remplacer que par une pièce portant le numéro spécifié.
---	---