

**Pioneer**

# ***Service Manual***

ORDER NO.  
**RRV2207**

DVD PLAYER

# **DV-525K**

**THIS MANUAL IS APPLICABLE TO THE FOLLOWING MODEL(S) AND TYPE(S).**

Type	Model	Power Requirement	Region No.	The voltage can be converted by the following method.
	DV-525K			
RAMXQ	○	AC110-127/220-240V	6	Automatic select

● **This service manual should be used together with the following manual(s):**

Model No.	Order No.	Remarks
DV-525/KU	RRV2158	

## **CONTENTS**

1. CONTRAST OF MISCELLANEOUS PARTS .....	2
2. SCHEMATIC DIAGRAM .....	7
3. PCB CONNECTION DIAGRAM .....	14

**PIONEER CORPORATION** 4-1, Meguro 1-chome, Meguro-ku, Tokyo 153-8654, Japan  
**PIONEER ELECTRONICS SERVICE, INC.** P.O. Box 1760, Long Beach, CA 90801-1760, U.S.A.  
**PIONEER ELECTRONIC (EUROPE) N.V.** Haven 1087, Keetberglaan 1, 9120 Melsele, Belgium  
**PIONEER ELECTRONICS ASIACENTRE PTE. LTD.** 253 Alexandra Road, #04-01, Singapore 159936  
©PIONEER CORPORATION 1999

T – ZZE SEPT. 1999 Printed in Japan

# 1. CONTRAST OF MISCELLANEOUS PARTS

- NOTES :**
- Parts marked by “NSP” are generally unavailable because they are not in our Master Spare Parts List.
  - The  $\triangle$  mark found on some component parts indicates the importance of the safety factor of the part. Therefore, when replacing, be sure to use parts of identical designation.
  - Reference Nos. indicate the pages and Nos. in the service manual for the base model.
  - When ordering resistors, first convert resistance values into code form as shown in the following examples.
- Ex. 1** When there are 2 effective digits (any digit apart from 0), such as 560 ohm and 47k ohm (tolerance is shown by  $J = 5\%$ , and  $K = 10\%$ ).
- 560  $\Omega \rightarrow 56 \times 10^1 \rightarrow 561$  ..... RD1/4PU  $\begin{bmatrix} 5 & 6 & 1 \end{bmatrix} J$   
 47k  $\Omega \rightarrow 47 \times 10^3 \rightarrow 473$  ..... RD1/4PU  $\begin{bmatrix} 4 & 7 & 3 \end{bmatrix} J$   
 0.5  $\Omega \rightarrow R50$  ..... RN2H  $\begin{bmatrix} R & 5 & 0 \end{bmatrix} K$   
 1  $\Omega \rightarrow 1R0$  ..... RS1P  $\begin{bmatrix} 1 & R & 0 \end{bmatrix} K$
- Ex. 2** When there are 3 effective digits (such as in high precision metal film resistors).
- 5.62k  $\Omega \rightarrow 562 \times 10^1 \rightarrow 5621$  ..... RN1/4PC  $\begin{bmatrix} 5 & 6 & 2 & 1 \end{bmatrix} F$

## ■ CONTRAST TABLE

DV-525K/RAMXQ and DV-525/KU are constructed the same except for the following:

Ref. No.	Mark	Symbol and Description	Part No.		Remarks
			DV-525/KU	DV-525K/RAMXQ	
P9 - 1		<b>PCB ASSEMBLIES</b>			
P9 - 2		DVDM ASSY	VWS1388	VWS1399	
		AVJB ASSY	VWV1693	VWV1695	
	NSP	FLKB ASSY	VWM1912	VWM1917	
P7 - 1		FLKY ASSY	VWG2050	VWG2054	
P7 - 2	NSP	PWSB ASSY	VWG2103	VWG2058	
P9 - 1		POWER SUPPLY ASSY	VWR1311	VWR1313	*1
	NSP	EMIB ASSY	Not used	VWV1699	No. 1
		<b>PACKING</b>			
P5 - 1		Audio Cord	VDE1033	VDE1054	
P5 - 2		Video Cord	VDE1034	VDE1055	
P5 - 3		Remote Control Unit (CU-DV049)	VXX2643	Not used	
P5 - 3		Remote Control Unit (CU-DV046)	Not used	VXX2634	
P5 - 4	NSP	Dry Cell Battery (R6P, AA)	VEM-013	VEM1010	
P5 - 7		Packing Case	VHG1800	VHG1832	
P5 - 10	NSP	Warranty Card	ARY7023	ARY7028	
P5 - 11		Operating Instructions (English)	VRB1220	VRB1224	
P5 - 18	$\triangle$	AC Power Cord	Not used	ADG7018	
P5 - 23	NSP	Label	VRW1629	Not used	
		Operating Instructions (Simp-Chinese)	Not used	VRC1092	
		SVCD Instruction	Not used	VRL1007	
		(English/Simp-Chinese)			
		Label (Packing Case)	Not used	VRW1814	for Packing Case
		<b>EXTERIOR SECTION</b>			
P6 - 1		Bonnet S	VXX2651	VXX2652	
P6 - 2		Tray Panel	VNK4448	VNK4445	
P6 - 6		Tray	VNL1731	VNK4333	
P6 - 11		Screw	BCZ40P060FZK	BCZ40P060FNI	
P6 - 17		65 Label	ARW7050	Not used	
		Nylon Rivet	Not used	AEC-525	No. 2
		L Sheet	Not used	VEC2086	No. 3

Ref. No.	Mark	Symbol and Description	Part No.		Remarks
			DV-525/KU	DV-525K/RAMXQ	
		<b>FRONT PANEL SECTION</b>			
P7 - 4		Flexible Cable (09P)	VDA1725	VDA1732	
P7 - 5		Front Panel	VNK4444	VNK4439	
P7 - 6		FL Lens	VEC2095	VEC2063	
P7 - 7		Name Plate	PAM1776	PAM1779	
P7 - 8		PW Botton (POWER)	VNK4101	VNK4059	
P7 - 9		Main Key	VNK4447	VNK4446	
		Flexible Cable (05P)	Not used	VDA1733	No. 4
		(EMIB CN201 ↔ AVJB CN201)			
		Headphone Knob G	Not used	PAC1862	No. 5
		Earth Plate	Not used	VBK1095	No. 6
		<b>BOTTOM VIEW SECTION</b>			
P9 - 8	⚠	AC Power Cord	ADG7024	Not used	
P9 -15		Cord Stopper	CM-22C	Not used	
P9 -17		Rear Panel	VNA2080	VNA2114	
P9 -25	NSP	Label	VRW1629	Not used	
	NSP	Housing Assy (2P)	Not used	VKP2189	for POWER SUPPLY ASSY
		Label (Rear)	Not used	VRW1739	for Rear Panel
		<b>LOADING MECHANISM ASSY</b>			
P10 -22		Cushion	VEB1312	Not used	

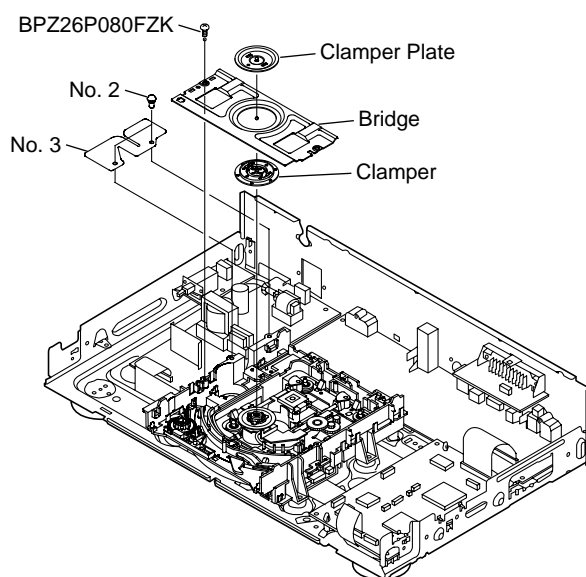
\*1: This assembly is used for DV-525/WY. Refer to the service manual RRV2158.

● The numbers in the remarks column correspond to the numbers on the “EXPLODED VIEWS”.

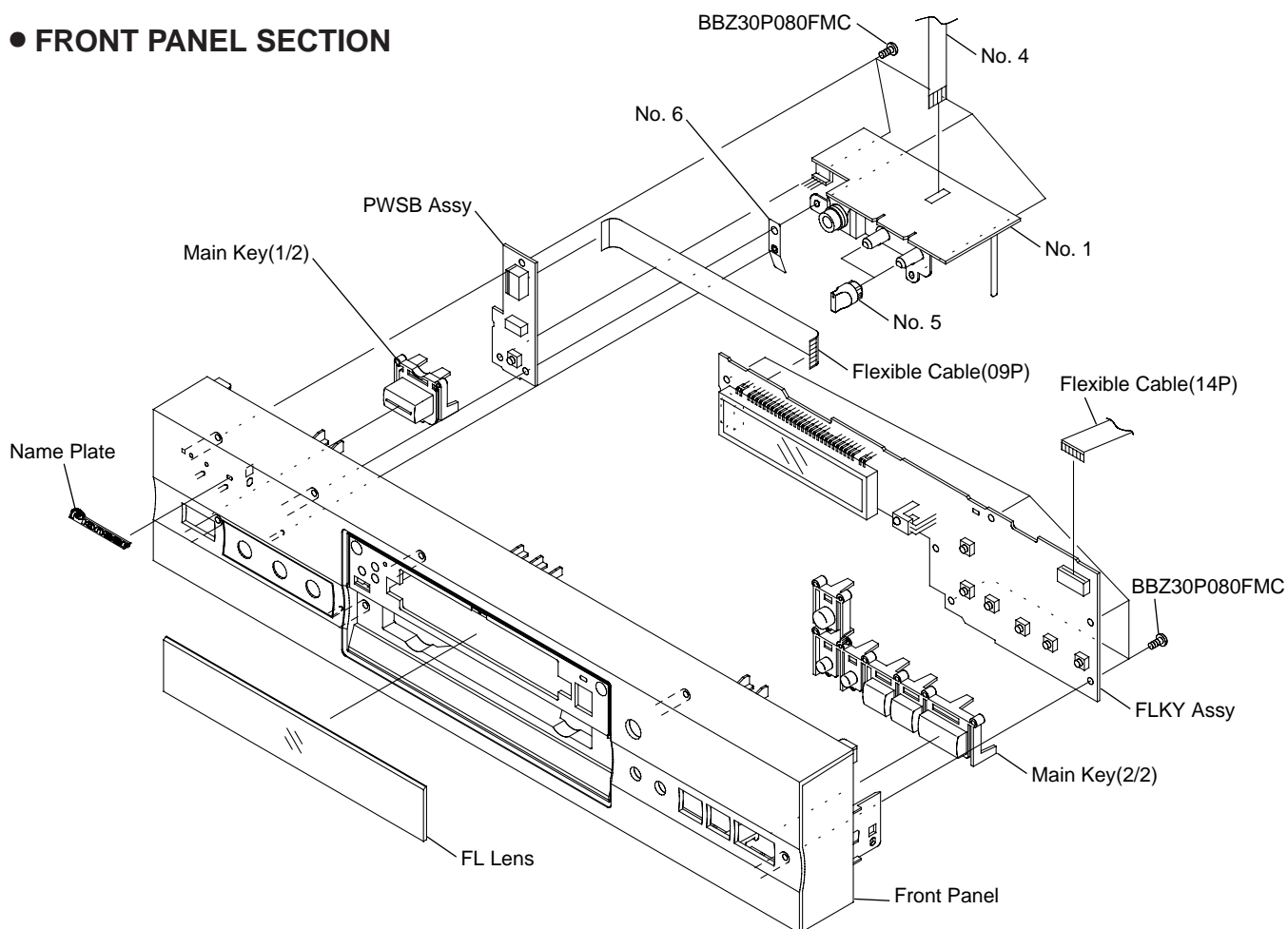
● For PCB ASSEMBLIES, Refer to “CONTRAST OF PCB ASSEMBLIES”, “2. SCHEMATIC DIAGRAM” and “3. PCB CONNECTION DIAGRAM”.

## ■ EXPLODED VIEWS

### ● EXTERIOR SECTION



### ● FRONT PANEL SECTION



## ■ CONTRAST OF PCB ASSEMBLIES

### **F**F DVDM ASSY

VWS1399 and VWS1388 are constructed the same except for the following:

Mark	Symbol and Description	Part No.		Remarks
		VWS1388	VWS1399	
	IC13 IC14 R1 R602	VWY1659 TC55V1001AF8 Not used Not used	VYW1649 KM68V1000CLG-7L RS1/16S333J RS1/16S0R0J	*1

\*1: This part is used for DV-525/WY. Refer to the service manual RRV2158.

### **F**F AVJB ASSY

VWV1695 and VWV1693 are constructed the same except for the following:

Mark	Symbol and Description	Part No.		Remarks
		VWV1693	VWV1695	
	IC206 Q260, Q360 Q261 Q361 L201	NJM78L05A Not used Not used Not used Not used	Not used 2SD2114K(VW) DTA124EK DTA124TK LAU220J	
	L262 CHIP BEADS S201 S451 S452 C261, C361	Not used Not used Not used VSH1009 Not used	VTL1096 VSH1009 VSH1020 Not used CEJA470M16	*1
	C262 C290 C550, C552, C555 R221, R455 R260, R360	Not used CKSQYF104Z25 CEAT471M6R3 RS1/10S0R0J Not used	CKSQYF104Z25 Not used Not used Not used RS1/10S223J	
	R261, R361, R453 R270, R271 R290, R291 R292 R450, R456	Not used Not used RS1/10S220J RS1/10S6R8J Not used	RS1/10S103J RS1/10S102J Not used Not used RS1/10S0R0J	*1(R453)    *1
	R452 R550, R554 R551, R555 R552, R556 R553, R557	Not used RN1/10SE1100D RS1/10S4R7J RN1/10SE3300D RN1/10SE4700D	RS1/10S153J Not used Not used Not used Not used	*1
	R558 CN201 CONNECTOR JA505 3P PIN JACK JA601 1P PIN JACK (NI, BLK) PC BOARD AVJB	RN1/10SC62R0D Not used VKB1105 VKB1077 VNP1717	Not used 52045-0545 Not used VKB1121 VNP1730	

\*1: These parts are used for DV-525/WY. Refer to the service manual RRV2158.

**GF** FLKY ASSY

VWG2054 and VWG2050 are constructed the same except for the following:

Mark	Symbol and Description	Part No.		Remarks
		VWG2050	VWG2054	
	R118–R120 R129, R130, R153 R131, R132 R141 R143  R190–R192 FL HOLDER	RS1/10S390J RS1/10S0R0J Not used RS1/10S622J RS1/10S363J  Not used VNF1087	RS1/10S150J Not used RS1/10S0R0J RS1/10S163J RS1/10S272J  RS1/10S391J VNF1096	*1

\*1: This part is used for DV-525/WY. Refer to the service manual RRV2158.

■ PCB PARTS LIST

Mark	No.	Description	Part No.	Mark	No.	Description	Part No.
<b>HF</b> PWSB ASSY					C871		CKSQYB104K25
<b>SWITCHES AND RELAYS</b>					C812		CKSQYB122K50
	S301		ASG7013		C852		CKSQYB123K50
<b>CAPACITORS</b>					C801, C891		CKSQYB152K50
	C301		CKSQYF104Z25		C863		CKSQYB332K50
<b>RESISTORS</b>					C862		CKSQYB333K25
	All Resistors		RS1/10S□□□J		C853		CKSQYB472K50
<b>OTHERS</b>					C842, C884, C885, C911		CKSQYF104Z25
	CN301 CONNECTOR 9P		52492-0920		C864		CKSQYF105Z16
	CN302 CONNECTOR		BTMK04S-1S	<b>RESISTORS</b>			
<b>MF</b> EMIB ASSY					VR813, VR845 (10kΩ•B)		VCS1040
<b>SEMICONDUCTORS</b>					Other Resistors		RS1/10S□□□J
	IC841		M65855FP	<b>OTHERS</b>			
	IC811		NJM2068M		CN201 CONNECTOR 5P		52492-0520
	IC881		NJM2370R10		CN301 CONNECTOR PLUG		BTMK04P-1R
	Q895		DTC124EK		JA891 HEADPHONE JACK		RKB1014
	D851		UDZS5.1B		PCB BINDER		VEF1040
<b>COILS AND FILTERS</b>					SNAP PLATE		VNE1102
	F9921 CHIP SOLID INDUCTOR		VTF1096		JACK HOLDER		VNE2199
<b>CAPACITORS</b>					PRINTED CIRCUIT BOARD		VNP1731
	C816		CCSQSL271J50				
	C811, C841, C859		CEAT101M10				
	C800, C813, C851, C881		CEAT2R2M50				
	C849, C883		CEAT470M16				
	C810, C819, C845, C855, C861		CKSQYB103K50				
	C865, C882		CKSQYB103K50				

## A

**E 2/3F**







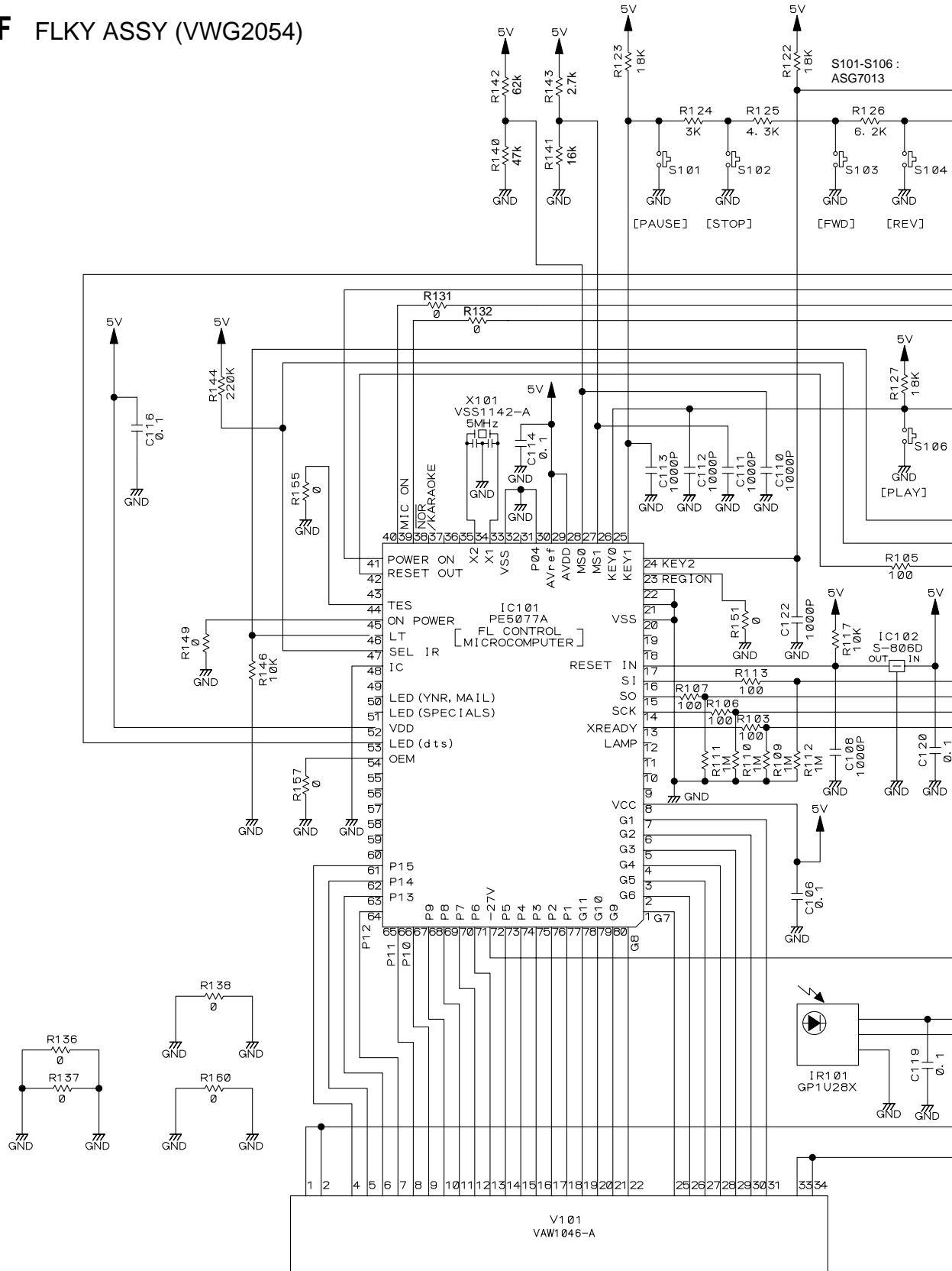
A

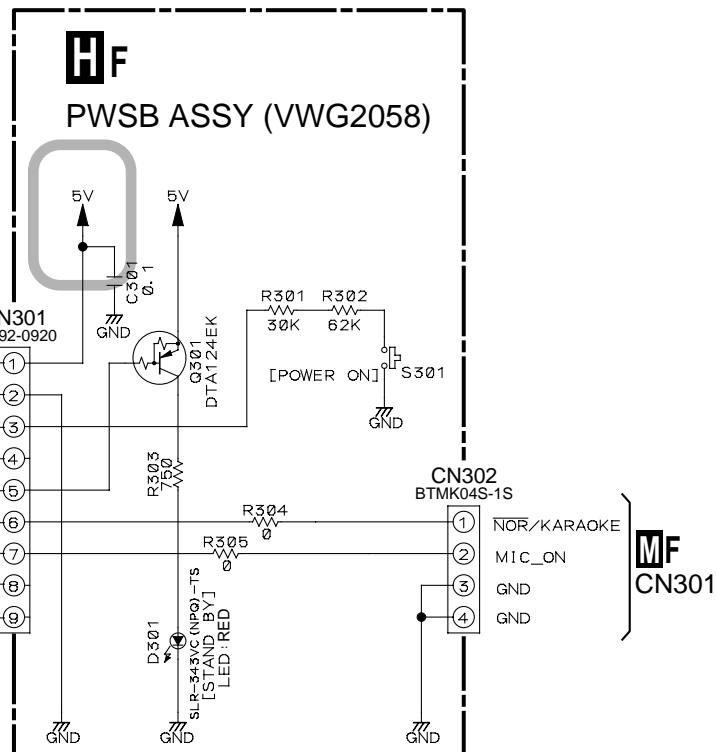
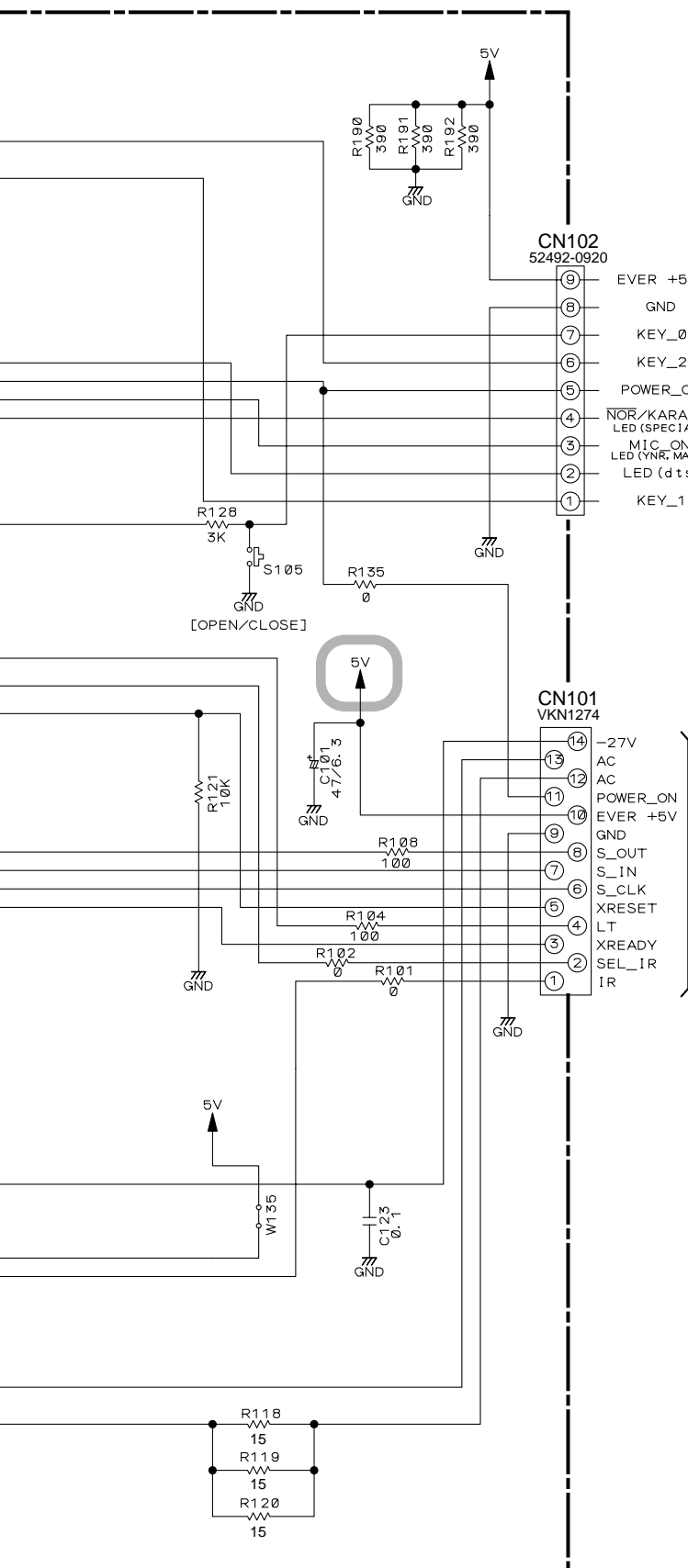
B


D

## 2.3 FLKY and PWSB ASSYS

## GF FLKY ASSY (VWG2054)





 : The power supply is shown with the marked box.

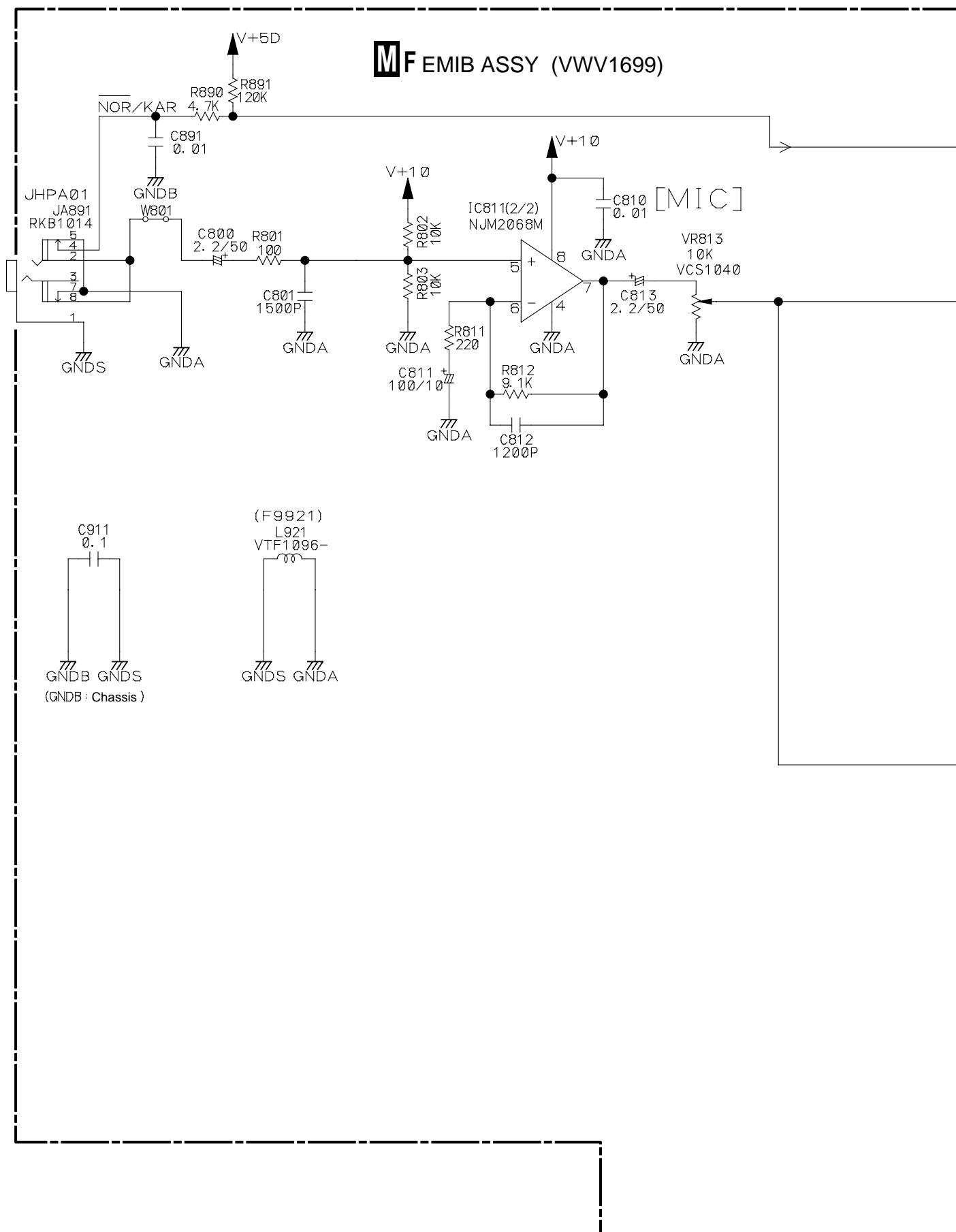
#### FLKY ASSY

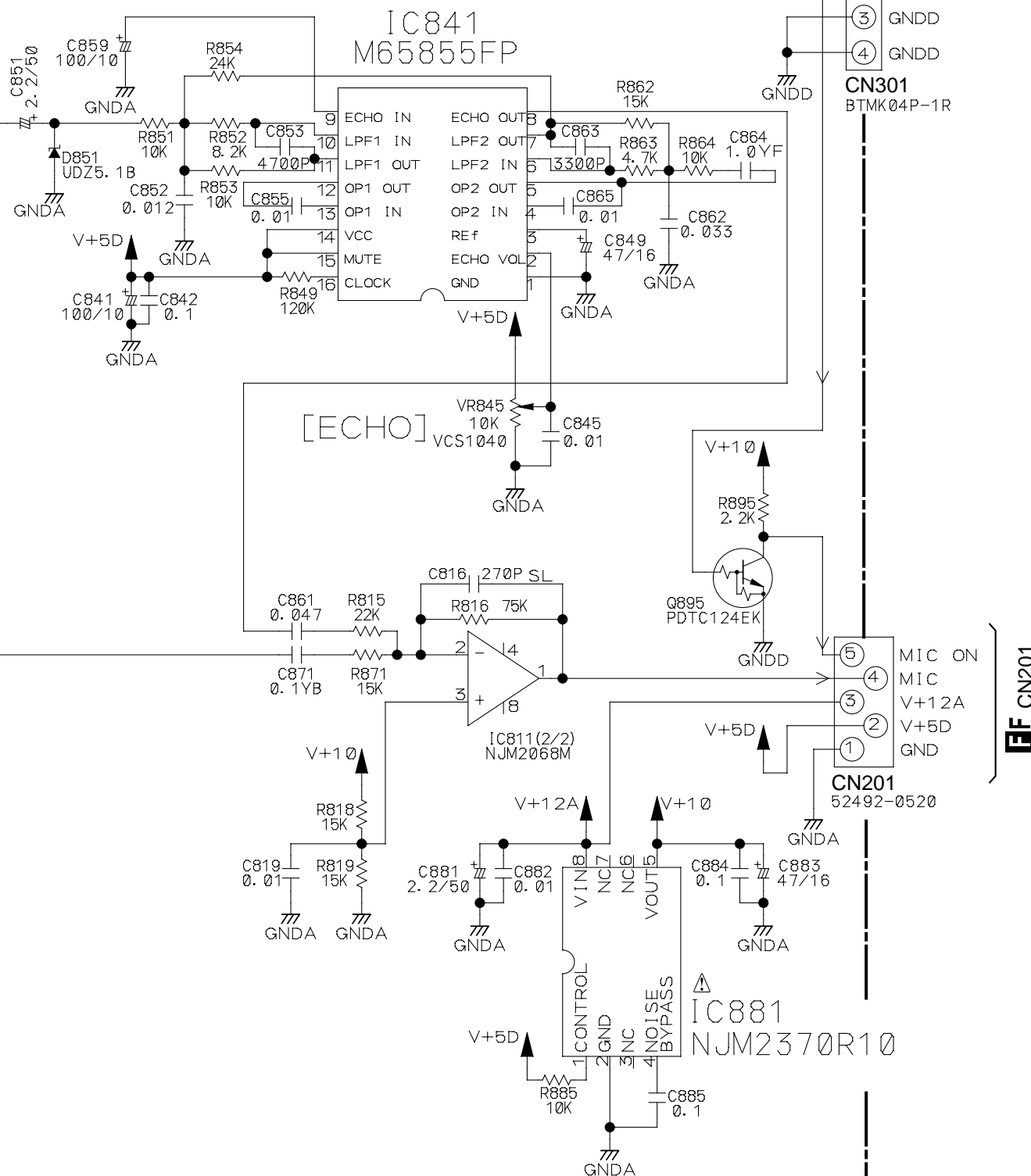
- S101 :  (PAUSE)
- S102 :  (STOP)
- S103 :  (FORWARD)
- S104 :  (REVERSE)
- S105 :  (OPEN/CLOSE)
- S106 :  (PLAY)

#### PWSB ASSY

- S301 :  (STANDBY/ON (POWER))

## 2.4 EMIB ASSY

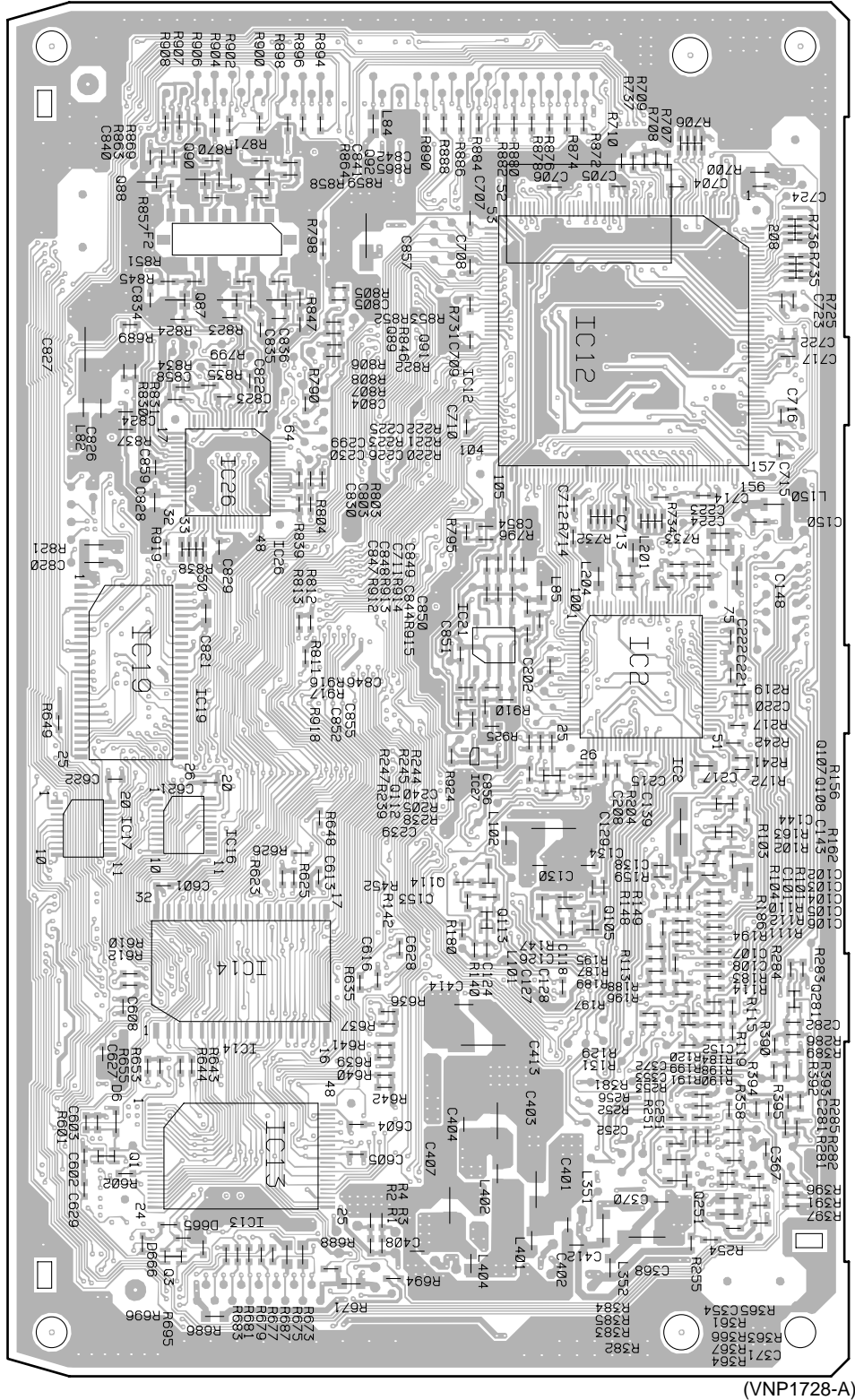






• This PCB is a four-layered board.

# EF DVDM ASSY



SIDE B

- Q88 Q90 Q92
- Q87 Q89 Q91
- IC12
- IC26
- IC19 IC21 IC2
- IC27
- Q112
- Q107
- IC17 IC16 Q108
- Q114
- Q113 Q105
- IC14
- Q1
- IC13
- Q251
- Q3



## A

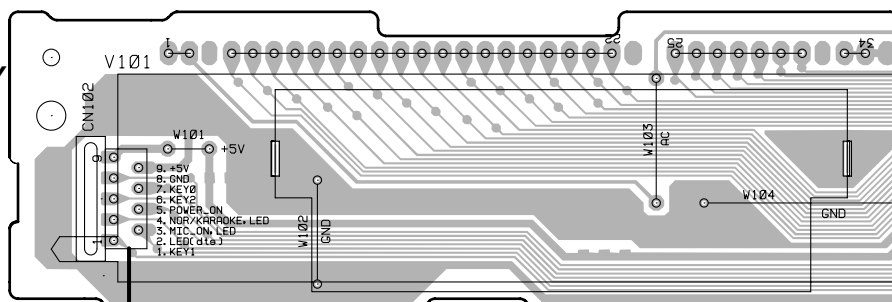




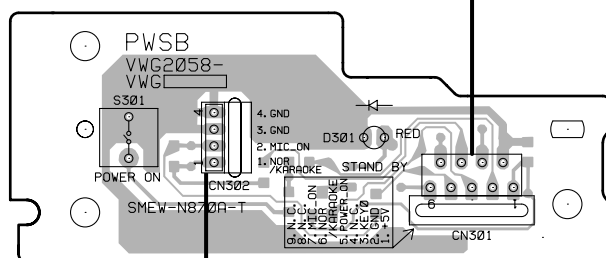


### 3.3 FLKY and PWSB ASSYS

**GF** FLKY ASSY



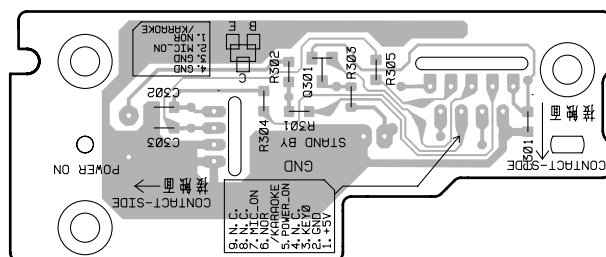
**HF** PWSB ASSY



(VNP1729-A)

**MF**

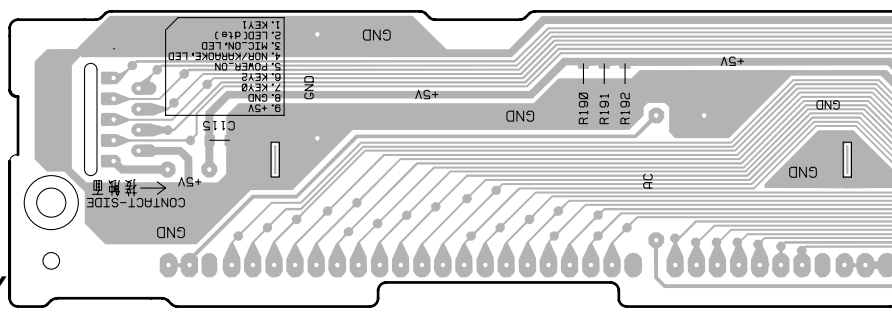
CN301

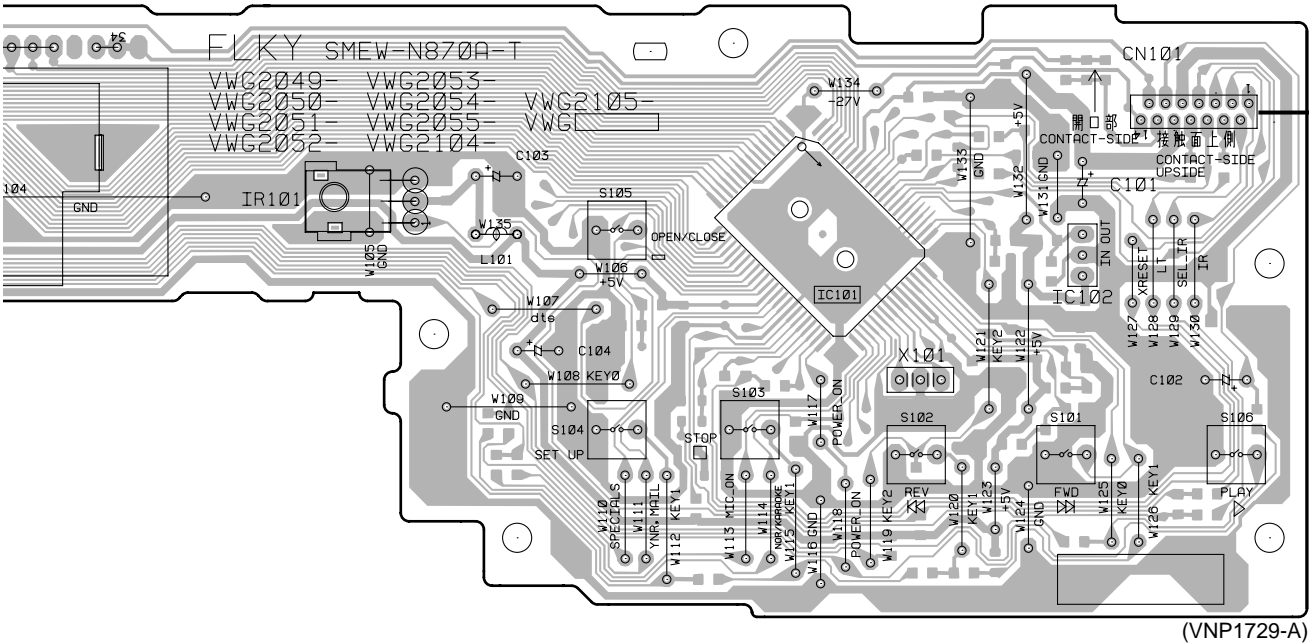


(VNP1729-A)

**HF** PWSB ASSY

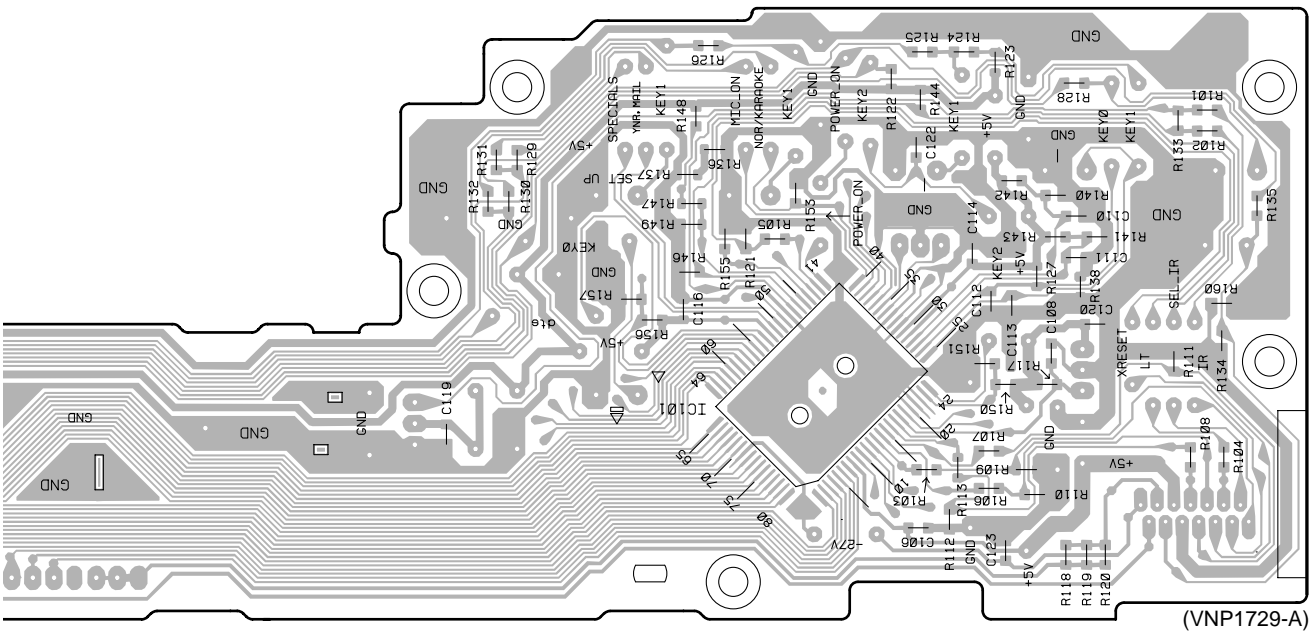
**GF** FLKY ASSY





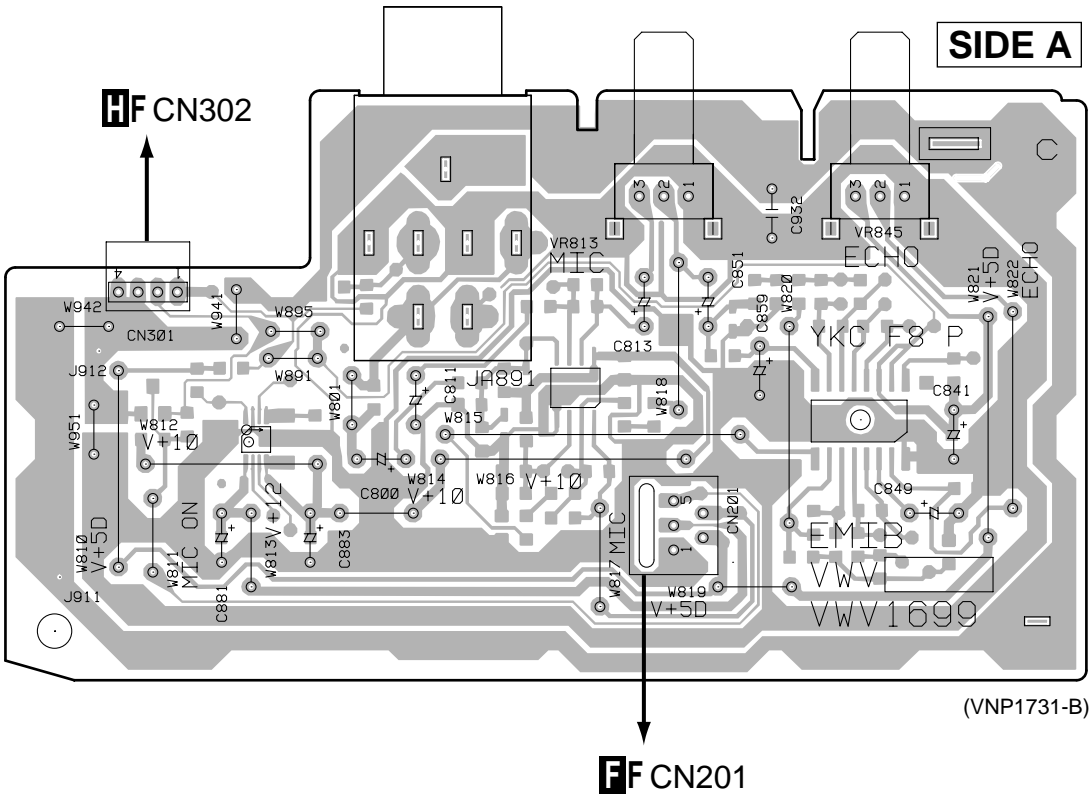
SIDE A

SIDE B



3.4 EMIB ASSY

**M**F EMIB ASSY



**M**F EMIB ASSY

