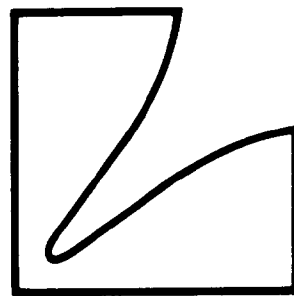


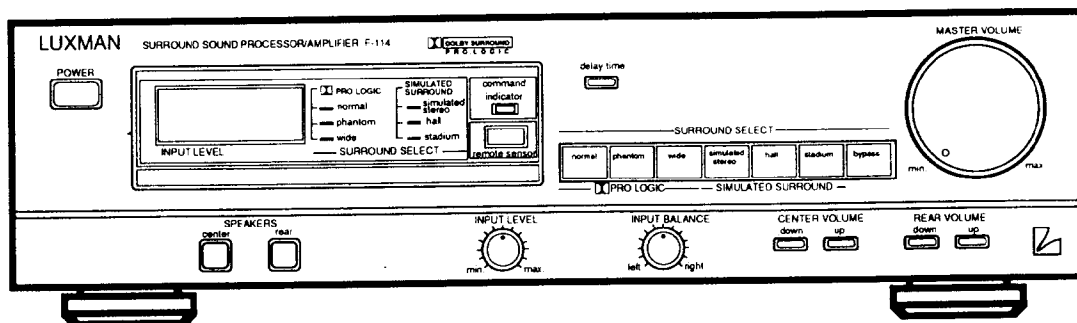
SERVICE MANUAL



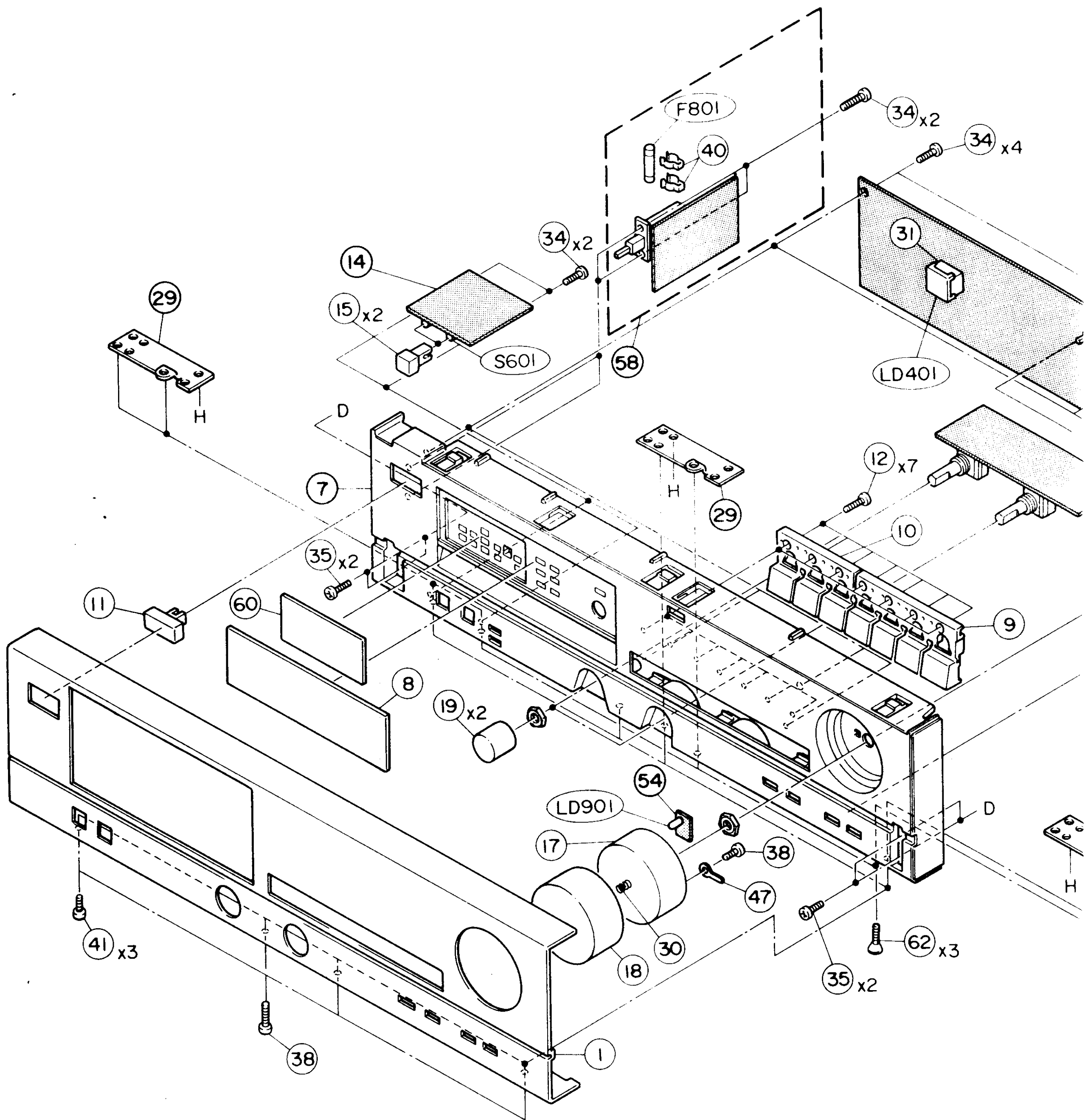
Surround Sound Processor/Amplifier

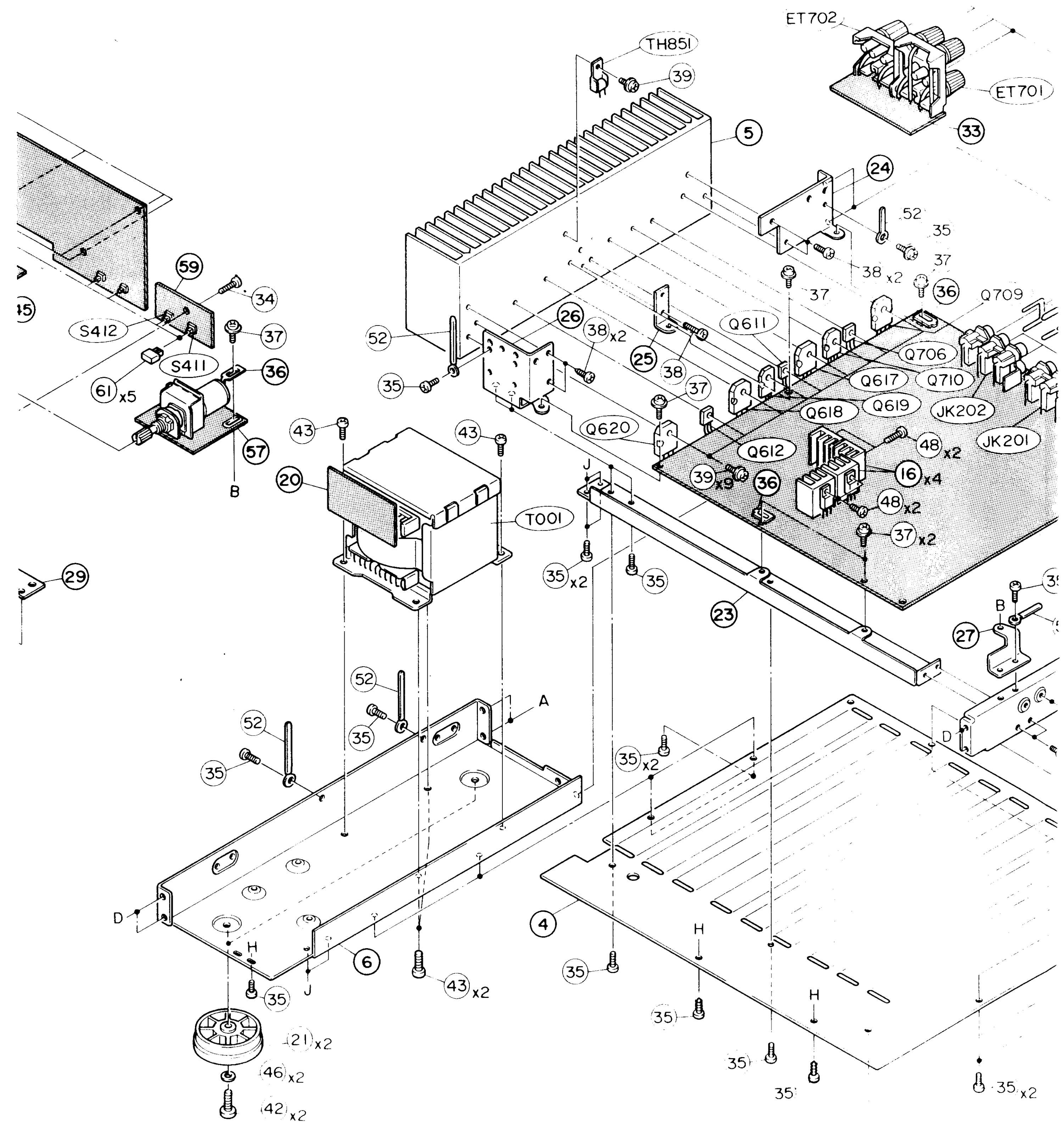
F-114

Parts List



Exploded View (Cabinet)





Electrical Parts List

Resistor : Carbon resistors under 1/4 watts are not mentioned in the parts list, please confirm them by schematic diagram.

Capacitor : μ F = microfarads, pF = picofarads

Abbreviations			Symbol No.	Part No.	Description
RES. = Resistor	CAP. = Capacitor		Q206	48E08922S01	RN1241
C.F. = Carbon Film	ELY. = Electrolytic		Q207	48E08922S01	RN1241
M.F. = Metal Film	CER. = Ceramic		Q208	48E08922S01	RN1241
M.O. = Metal Oxide Film	MYL. = Mylar		Q321	48T81101F02	2SC1815
M.P. = Metal Plate	TAN. = Tantalum		Q322	48T81101F02	2SC1815
TR. = Transistor	POLY. = Polystyrol		Q323	48E08923S01	RN2209
TRANS. = Transformer	PP. = Polypropylene		Q324	48E08922S01	RN1241
CP. = Chip	PLT. = Polyethylene		Q325	48E08922S01	RN1241
	PF. = Polyester Film		Q350	48E08923S01	RN2209
			Q351	48E08923S01	RN2209
Surround Main P. C. Board			Q352	48E08923S01	RN2209
IC's			Q601	48T52545F02	2SA970
IC101	51E07540S01	NJM4565SB	Q602	48T52545F02	2SA970
IC201	51E07540S01	NJM4565SB	Q603	48T52545F02	2SA970
IC202	51E08931S01	LC7823N	Q604	48T52545F02	2SA970
IC203	51E08932S01	YM7306B			
IC204	51E08933S01	MB81464	Q605	48T53301F02	2SC2240
			Q606	48T53301F02	2SC2240
IC205	51E07540S01	NJM4565SB	Q607	48T60751F01	2SA1145
IC206	51E08934S01	NJM2082S	Q608	48T60751F01	2SA1145
IC207	51E07540S01	NJM4565SB	Q609	48T60752F01	2SC2705
IC208	51E08934S01	NJM2082S			
IC209	51E08934S01	NJM2082S	Q610	48T60752F01	2SC2705
			Q613	48T69176F01	2SC3421
IC210	51E07540S01	NJM4565SB	Q614	48T69176F01	2SC3421
IC211	51E08934S01	NJM2082S	Q615	48T69177F01	2SA1358
IC212	51E07540S01	NJM4565SB	Q616	48T69177F01	2SA1358
IC213	51E07540S01	NJM4565SB			
IC214	51E07540S01	NJM4565SB	Q651	48T53301F02	2SC2240
			Q652	48T53301F02	2SC2240
IC215	51E07540S01	NJM4565SB	Q653	48T52545F02	2SA970
IC216	51E07540S01	NJM4565SB	Q654	48T53301F02	2SC2240
IC217	51E08935S01	LC7535	Q655	48T53301F02	2SC2240
IC218	51E07540S01	NJM4565SB			
IC320	51E07540S01	NJM4565SB	Q656	48T53301F02	2SC2240
			Q701	48T52545F02	2SA970
IC321	51E07540S01	NJM4565SB	Q702	48T52545F02	2SA970
IC322	51E08935S01	LC7535	Q703	48T53301F02	2SC2240
IC323	51E07540S01	NJM4565SB	Q704	48T60751F01	2SA1145
IC651	51T63437F01	TA7317P			
IC801	51E08120S01	NJM78M15FA	Q705	48T60752F01	2SC2705
			Q707	48T69176F01	2SC3421
IC802	51E08121S01	NJM79M15FA	Q708	48T69177F01	2SA1358
IC803	51E08127S01	NJM78M05FA	Q751	48T53301F02	2SC2240
IC804	51E08127S01	NJM78M05FA			
Transistors			Diodes		
Q201	48E08922S01	RN1241	D201	48E04197S01	GMA01
Q202	48E08922S01	RN1241	D202	48E04197S01	GMA01
Q203	48E08922S01	RN1241	D203	48E04197S01	GMA01
Q204	48E08922S01	RN1241	D204	48E04197S01	GMA01
Q205	48E08922S01	RN1241	D205	48E04197S01	GMA01

Symbol No.	Part No.	Description	Symbol No.	Part No.	Description
D206	48E04197S01	GMA01	ZD611	48E08986S01	Zener, GZ58.2X
D207	48E04197S01	GMA01	ZD612	48E08986S01	Zener, GZ58.2X
D208	48E04197S01	GMA01	ZD613	48E08986S01	Zener, GZ58.2X
D321	48E04197S01	GMA01	ZD614	48E08986S01	Zener, GZ58.2X
D350	48E04197S01	GMA01	ZD706	48E08986S01	Zener, GZ58.2X
D351	48E04197S01	GMA01	ZD707	48E08986S01	Zener, GZ58.2X
D352	48E04197S01	GMA01			
D353	48E04197S01	GMA01			
D354	48E04197S01	GMA01			
D355	48E04197S01	GMA01			
D601	48E08921S01	GMB01U	Coils / Filters		
D602	48E08921S01	GMB01U	LF201	24E08946S01	Filter
D603	48E08921S01	GMB01U	LF202	24E08946S01	Filter
D604	48E08921S01	GMB01U	L350	24E08947S01	Inductor
D605	48E08921S01	GMB01U	L601	24E04241S01	Air-Core
D606	48E08921S01	GMB01U	L602	24E04241S01	Air-Core
D607	48E08921S01	GMB01U	L701	24E04241S01	Air-Core
D608	48E08921S01	GMB01U			
D609	48E08921S01	GMB01U			
D610	48E08921S01	GMB01U			
D651	48E08921S01	GMB01U	Crystal / Relays		
D652	48E08921S01	GMB01U	X350	91E08951S01	Crystal, 8.46MHz
D653	48E04209S01	1N4002	RL651	80E08960S01	OSA-SS-224DM3
D654	48E08921S01	GMB01U	RL751	80E08961S01	OS-SS-124DM
D655	48E08921S01	GMB01U			
D656	48E08921S01	GMB01U			
D657	48E08921S01	GMB01U			
D658	48E08921S01	GMB01U			
D701	48E08921S01	GMB01U			
D702	48E08921S01	GMB01U			
D703	48E08921S01	GMB01U	Capacitors		
D704	48E08921S01	GMB01U	C101	23E04338S05	ELY., 10 μ F / 50V
D705	48E08921S01	GMB01U	C102	23E04338S05	ELY., 10 μ F / 50V
D751	48E08921S01	GMB01U	C103	21E04358S01	CER., 100pF
D752	48E04209S01	1N4002	C104	21E04358S01	CER., 100pF
D801	48E04210S01	1N5402	C105	23E04338S07	ELY., 4.7 μ F / 50V
D802	48E04210S01	1N5402	C106	23E04338S07	ELY., 4.7 μ F / 50V
D803	48E04210S01	1N5402	C110	21E08222S01	CER., 0.047 μ F
D804	48E04210S01	1N5402	C200	08E04348S22	MYL., 1000pF
D805	48E04209S01	1N4002	C201	23E04338S07	ELY., 4.7 μ F / 50V
D806	48E04209S01	1N4002	C202	23E04338S07	ELY., 4.7 μ F / 50V
D807	48E04209S01	1N4002	C203	21E04354S14	CER., 33pF
D808	48E04209S01	1N4002	C204	21E04354S14	CER., 33pF
D809	48E04209S01	1N4002	C205	23E04338S08	ELY., 22 μ F / 50V
D810	48E04209S01	1N4002	C206	23E04338S08	ELY., 22 μ F / 50V
D811	48E04209S01	1N4002	C207	21E04358S04	CER., 120pF
D812	48E04209S01	1N4002	C208	21E04358S04	CER., 120pF
D813	48E04209S01	1N4002	C209	23E04338S07	ELY., 4.7 μ F / 50V
D814	48E04209S01	1N4002	C210	23E04338S07	ELY., 4.7 μ F / 50V
D815	48E04209S01	1N4002	C211	08E07655S04	MTL., 0.1 μ F
D816	48E04209S01	1N4002	C212	23E04334S01	ELY., 100 μ F / 10V
D817	48E04209S01	1N4002	C213	23E04338S05	ELY., 10 μ F / 50V
			C214	23E04338S05	ELY., 10 μ F / 50V

Symbol No.	Part No.	Description		Symbol No.	Part No.	Description	
C215	23E04338S07	ELY.,	4.7 μ F / 50V	C267	23E04338S04	ELY.,	1 μ F / 50V
C216	23E04338S07	ELY.,	4.7 μ F / 50V	C268	23E04338S04	ELY.,	1 μ F / 50V
C217	21E04354S15	CER.,	68pF	C269	23E04338S07	ELY.,	4.7 μ F / 50V
C218	21E04354S15	CER.,	68pF	C270	23E04338S07	ELY.,	4.7 μ F / 50V
C219	23E04338S07	ELY.,	4.7 μ F / 50V	C271	23E04338S07	ELY.,	4.7 μ F / 50V
C220	23E04338S07	ELY.,	4.7 μ F / 50V	C272	23E04338S07	ELY.,	4.7 μ F / 50V
C221	21E04358S01	CER.,	100pF	C273	21E04358S01	CER.,	100pF
C222	21E04358S01	CER.,	100pF	C274	21E04358S01	CER.,	100pF
C223	23E04338S07	ELY.,	4.7 μ F / 50V	C275	23E04338S07	ELY.,	4.7 μ F / 50V
C224	23E04338S07	ELY.,	4.7 μ F / 50V	C276	23E04338S07	ELY.,	4.7 μ F / 50V
C225	08E04350S04	Styrol,	30pF	C321	23E04338S05	ELY.,	10 μ F / 50V
C226	08E04350S04	Styrol,	30pF	C322	21E04354S15	CER.,	68pF
C227	08E04350S04	Styrol,	30pF	C323	23E04338S07	ELY.,	4.7 μ F / 50V
C228	08E04350S04	Styrol,	30pF	C324	08E07655S06	MTL.,	0.15 μ F
C229	23E04338S07	ELY.,	4.7 μ F / 50V	C325	21E04358S01	CER.,	100pF
C230	23E04338S07	ELY.,	4.7 μ F / 50V	C326	23E04338S07	ELY.,	4.7 μ F / 50V
C231	23E04338S07	ELY.,	4.7 μ F / 50V	C327	23E04338S07	ELY.,	4.7 μ F / 50V
C232	23E04338S07	ELY.,	4.7 μ F / 50V	C328	23E04338S07	ELY.,	4.7 μ F / 50V
C233	08E04348S05	MYL.,	2700pF	C330	23E04338S07	ELY.,	4.7 μ F / 50V
C234	08E04348S05	MYL.,	2700pF	C331	23E04338S04	ELY.,	1 μ F / 50V
C235	08E04348S05	MYL.,	2700pF	C332	23E04338S07	ELY.,	4.7 μ F / 50V
C236	08E04348S05	MYL.,	2700pF	C333	23E04338S07	ELY.,	4.7 μ F / 50V
C237	21E04364S01	CER.,	390pF	C334	21E04358S01	CER.,	100pF
C238	21E04364S01	CER.,	390pF	C335	23E04338S07	ELY.,	4.7 μ F / 50V
C239	21E04364S01	CER.,	390pF	C350	23E04334S01	ELY.,	100 μ F / 10V
C240	21E04364S01	CER.,	390pF	C351	08E07655S04	MTL.,	0.1 μ F
C241	08E04348S23	MYL.,	6800pF	C352	21E04357S04	CER.,	30pF
C242	08E04348S23	MYL.,	6800pF	C353	21E04357S04	CER.,	30pF
C243	08E04348S23	MYL.,	6800pF	C354	23E04338S07	ELY.,	4.7 μ F / 50V
C244	08E04348S23	MYL.,	6800pF	C355	08E07655S04	MTL.,	0.1 μ F
C245	23E04338S07	ELY.,	4.7 μ F / 50V	C356	23E04335S03	ELY.,	220 μ F / 16V
C246	23E04338S07	ELY.,	4.7 μ F / 50V	C357	08E07655S04	MTL.,	0.1 μ F
C247	23E04338S07	ELY.,	4.7 μ F / 50V	C358	08E07655S04	MTL.,	0.1 μ F
C248	23E04338S07	ELY.,	4.7 μ F / 50V	C359	23E04334S01	ELY.,	100 μ F / 10V
C249	08E08942S01	POLY.,	3300pF	C360	08E07655S04	MTL.,	0.1 μ F
C250	08E08942S01	POLY.,	3300pF	C361	23E04338S04	ELY.,	1 μ F / 50V
C251	23E04338S07	ELY.,	4.7 μ F / 50V	C362	23E04338S04	ELY.,	1 μ F / 50V
C252	23E04338S07	ELY.,	4.7 μ F / 50V	C601	21E08221S01	CER.,	330pF
C253	21E04358S01	CER.,	100pF	C602	21E08221S01	CER.,	330pF
C254	21E04358S01	CER.,	100pF	C603	23E04338S05	ELY.,	10 μ F / 50V
C255	23E04338S07	ELY.,	4.7 μ F / 50V	C604	23E04338S05	ELY.,	10 μ F / 50V
C256	23E04338S07	ELY.,	4.7 μ F / 50V	C605	08E04348S18	MYL.,	2200pF
C257	23E04338S07	ELY.,	4.7 μ F / 50V	C606	08E04348S18	MYL.,	2200pF
C258	23E04338S07	ELY.,	4.7 μ F / 50V	C607	23E04335S02	ELY.,	100 μ F / 16V
C259	23E04338S07	ELY.,	4.7 μ F / 50V	C608	23E04335S02	ELY.,	100 μ F / 16V
C260	23E04338S07	ELY.,	4.7 μ F / 50V	C609	21E04354S11	CER.,	10pF
C261	23E04338S07	ELY.,	4.7 μ F / 50V	C610	21E04354S11	CER.,	10pF
C262	23E04338S07	ELY.,	4.7 μ F / 50V	C611	23E04338S05	ELY.,	10 μ F / 50V
C263	23E04338S07	ELY.,	4.7 μ F / 50V	C612	23E04338S05	ELY.,	10 μ F / 50V
C264	23E04338S07	ELY.,	4.7 μ F / 50V	C613	08E04348S15	MYL.,	0.047 μ F
C265	23E04338S07	ELY.,	4.7 μ F / 50V	C614	08E04348S15	MYL.,	0.047 μ F
C266	23E04338S07	ELY.,	4.7 μ F / 50V	C651	23E04338S07	ELY.,	4.7 μ F / 50V

Symbol No.	Part No.	Description	Symbol No.	Part No.	Description
C652	23E04336S06	ELY., 47 μ F / 25V	R641	06E04319S04	MO., 10 ohm 1W
C653	23E04338S08	ELY., 22 μ F / 50V	R642	06E04319S04	MO., 10 ohm 1W
C654	23E04338S03	ELY., 0.47 μ F / 50V	R670	06E04319S05	MO., 470 ohm 1W
C656	23E04362S01	CER., 0.01 μ F	R707	06E04318S03	MF., 30K ohm 1/4W
C701	23E08221S01	CER., 330pF	R716	06E04321S09	RF., 4.7 ohm 1/4W
C702	23E04338S05	ELY., 10 μ F / 50V	R717	06E04321S09	RF., 4.7 ohm 1/4W
C703	08E04348S18	MYL., 2200pF	R718	06E04322S06	RF., 220 ohm 1/2W
C704	23E04354S11	CER., 10pF	R719	06E08225S01	MPC., 0.22 ohm 5W \times 2
C705	23E04335S02	ELY., 100 μ F / 16V	R720	06E04319S03	MO., 4.7 ohm 1W
C706	23E04338S05	ELY., 10 μ F / 50V	R721	06E04319S04	MO., 10 ohm 1W
C707	08E04348S15	MYL., 0.047 μ F	R756	06E04319S05	MO., 470 ohm 1W
C802	23E08943S01	ELY., 15000 μ F / 50V	R802	06E04321S07	RF., 1 ohm 1/4W
C803	23E08943S01	ELY., 15000 μ F / 50V	R803	06E04321S07	RF., 1 ohm 1/4W
C804	23E08950S01	CER., 0.022 μ F	R804	06E04321S07	RF., 1 ohm 1/4W
C805	23E08950S01	CER., 0.022 μ F	R805	06E04321S07	RF., 1 ohm 1/4W
C806	23E04338S06	ELY., 2.2 μ F / 50V	R806	06E04319S07	MO., 150 ohm 1W
C807	23E04336S08	ELY., 1000 μ F / 25V	VR601	18E08226S01	Variable 1K ohm
C808	23E04336S08	ELY., 1000 μ F / 25V	VR602	18E08226S01	Variable 1K ohm
C809	23E04338S05	ELY., 10 μ F / 50V	VR701	18E08226S01	Variable 1K ohm
C810	23E04338S05	ELY., 10 μ F / 50V			
C811	23E04336S07	ELY., 470 μ F / 25V	Power Switch P. C. Board		
C812	23E04336S07	ELY., 470 μ F / 25V	Switch		
C813	23E04334S01	ELY., 100 μ F / 10V	S801	40E08963S01	Switch, Power
C814	08E07655S04	MTL., 0.1 μ F			
C815	23E04336S06	ELY., 47 μ F / 25V	Capacitor		
C816	23E04336S08	ELY., 1000 μ F / 16V	C801	08E08224S01	MTL., 0.01 μ F
C817	23E04338S05	ELY., 10 μ F / 50V			
C818	23E04338S04	ELY., 1 μ F / 50V	Display P. C. Board		
C819	23E04338S04	ELY., 1 μ F / 50V	IC's / Receiving Unit		
Resistors			IC401	51E08936S01	μ PD75106CW
R229	06E04317S02	MF., 10K ohm 1/6W	IC402	51E08937S01	PST572C
R230	06E04317S02	MF., 10K ohm 1/6W	RV401	01E08159S01	Remote Signal Receiving Unit (SBX1610-12)
R231	06E04317S02	MF., 10K ohm 1/6W			
R232	06E04317S02	MF., 10K ohm 1/6W	Transistors		
R321	06E04317S02	MF., 10K ohm 1/6W	Q401	48T81101F02	2SC1815
R322	06E04317S02	MF., 10K ohm 1/6W	Q402	48T81101F02	2SC1815
R613	06E04318S03	MF., 30K ohm 1/4W	Q403	48T81101F02	2SC1815
R614	06E04318S03	MF., 30K ohm 1/4W	Q404	48T81101F02	2SC1815
R631	06E04321S09	RF., 4.7 ohm 1/4W	Q405	48T81101F02	2SC1815
R632	06E04321S09	RF., 4.7 ohm 1/4W			
R633	06E04321S09	RF., 4.7 ohm 1/4W			
R634	06E04321S09	RF., 4.7 ohm 1/4W			
R635	06E04322S06	RF., 220 ohm 1/2W			
R636	06E04322S06	RF., 220 ohm 1/2W			
R637	06E08225S01	MPC., 0.22 ohm 5W \times 2			
R638	06E08225S01	MPC., 0.22 ohm 5W \times 2			
R639	06E04319S03	MO., 4.7 ohm 1W			
R640	06E04319S03	MO., 4.7 ohm 1W			

Symbol No.	Part No.	Description
Q406	48T81101F02	2SC1815
Q407	48T81101F02	2SC1815
Q408	48T81101F02	2SC1815
Q409	48T81101F02	2SC1815
Q410	48T81101F02	2SC1815
Q411	48T81101F02	2SC1815
Switches / Crystal		
S401	40E08198S01	Tact, SOA-132HS (normal)
S402	40E08198S01	Tact, SOA-132HS (phantom)
S403	40E08198S01	Tact, SOA-132HS (wide)
S404	40E08198S01	Tact, SOA-132HS (simulated stereo)
S405	40E08198S01	Tact, SOA-132HS (hall)
S406	40E08198S01	Tact, SOA-132HS (stadium)
S407	40E08198S01	Tact, SOA-132HS (bypass)
S408	40E08199S01	Tact, SKHHDA (delay time)
S409	40E08199S01	Tact, SKHHDA (down)
S410	40E08199S01	Tact, SKHHDA (up)
X401	91E08206S01	Crystal, 4.19MHz
LED's		
LD401	48E08924S01	SLR-34VC120 (RED)
LD402	48E08925S01	SLR-34VC102 (RED)
LD409	48E08925S01	SLR-34VC102 (RED)
LD410	48E08925S01	SLR-34VC102 (RED)
LD411	48E08925S01	SLR-34VC102 (RED)
LD412	48E08924S01	SLR-34VC120 (RED)
LD413	48E08924S01	SLR-34VC120 (RED)
LD414	48E08924S01	SLR-34VC120 (RED)
LD415	48E08924S01	SLR-34VC120 (RED)
LD416	48E08924S01	SLR-34VC120 (RED)
LD417	48E08924S01	SLR-34VC120 (RED)
LD419	48E08997S01	SLR-34MC102 (RED)
LD420	48E08925S01	SLR-34VC102 (RED)
LD421	48E08997S01	SLR-34MC102 (RED)
LD422	48E08925S01	SLR-34VC102 (RED)
LD423	48E08925S01	SLR-34VC102 (RED)
LD424	48E08925S01	SLR-34VC102 (RED)
LD425	48E08925S01	SLR-34VC102 (RED)
Diodes		
D403	48E04209S01	1N4002
D405	48E04197S01	GMA01
D406	48E04197S01	GMA01
D408	48E04197S01	GMA01

Symbol No.	Part No.	Description
Capacitors		
C401	23E04322S04	ELY., 10000 μ F / 5.5V
C402	08E07655S04	MTL., 0.1 μ F
C403	23E08944S01	ELY., 10 μ F / 16V
C404	23E08944S02	ELY., 4.7 μ F / 16V
C405	21E04357S04	CER., 30pF
C406	21E04357S04	CER., 30pF
C413	23E08945S01	ELY., 100 μ F / 6.3V
Input Volume Control P. C. Board		
IC		
IC551	51E07540S01	NJM4565SB
Diodes		
D551	48E04197S01	GMA01
D552	48E04197S01	GMA01
Capacitors		
C551	23E04336S03	ELY., 22 μ F / 25V
C552	23E04336S03	ELY., 22 μ F / 25V
Resistors		
VR551	18E08968S01	Rotary, Potentiometer 50K ohm (INPUT LEVEL)
VR552	18E08969S01	Rotary, Potentiometer 100K ohm (INPUT BALANCE)
Volume Control P. C. Board		
IC		
IC901	51E08938S01	LB1638
Capacitors		
C901	23E04338S05	ELY., 10 μ F / 50V
C902	08E07655S04	MTL., 0.1 μ F

Symbol No.	Part No.	Description
Resistors		
VR901 M901	18E08970S01	Rotary, Potentiometer 100K ohm (MASTER VOLUME)
Video P. C. Board		
IC's		
IC501 IC502 IC503 IC504	51E08939S01 51E08940S01 51E08122S01 51E08127S01	MB88323A NJM2229S NJM78M12FA NJM78M05FA
Transistors		
Q501 Q502 Q503 Q504 Q505 Q506 Q507	48T81101F02 48T51118F03 48T81101F02 48T81101F02 48T81101F02 48E08928S01 48E08929S01	2SC1815 2SA1015 2SC1815 2SC1815 2SC1815 RN1204 RN2204
Diodes		
D501 D502 D503 D504 D505 D506 D507	48E04209S01 48E04197S01 48E04197S01 48E04209S01 48E04209S01 48E04209S01 48E04209S01	1N4002 GMA01 GMA01 1N4002 1N4002 1N4002 1N4002
Coils / Relay		
L501 L502 RL501	24E08948S01 24E08949S01 80E08962S01	Inductor 15 μ H Inductor 0.22 μ H Relay
Crystals		
X501 X502	48E08930S01 91E08952S01	7.15909MHz CSB503F2

Symbol No.	Part No.	Description
Capacitors		
C500 C501 C502 C503 C504 C505 C506 C507 C508 C509 C510 C512 C513 C514 C515 C516 C517 C518 C519 C520 C521 C522 C523 C524 C527 C528 C530 C531 C532	21E04353S05 23E04335S02 23E04335S02 23E04335S03 21E04353S05 21E04353S05 21E04357S03 21E04357S03 21E04362S01 21E04362S01 23E04338S07 21E04355S05 23E04336S06 23E04335S07 08E08942S01 08E07655S07 23E04338S04 23E04338S04 21E04354S16 23E04338S07 21E04359S01 21E04359S01 23E04338S05 08E04348S22 23E04336S09 23E04338S05 23E04334S01 23E04338S05 23E04338S05	CER., 15pF ELY., 100 μ F / 16V ELY., 100 μ F / 16V ELY., 220 μ F / 16V CER., 15pF CER., 15pF CER., 33pF CER., 33pF CER., 0.01 μ F CER., 0.01 μ F ELY., 4.7 μ F / 50V CER., 120pF ELY., 47 μ F / 25V ELY., 330 μ F / 16V POLY., 3300pF MTL., 0.068 μ F ELY., 1 μ F / 50V ELY., 1 μ F / 50V CER., 56pF ELY., 4.7 μ F / 50V CER., 1000pF CER., 1000pF ELY., 10 μ F / 50V MYL., 1000pF ELY., 220 μ F / 25V ELY., 10 μ F / 50V ELY., 100 μ F / 10V ELY., 10 μ F / 50V ELY., 10 μ F / 50V
Resistors		
R543 R544	06E04321S07 06E04321S07	RF., 1 ohm 1/4W RF., 1 ohm 1/4W
Miscellaneous		
ET701 ET702 F801 JK101 JK201 JK202	09E08958S01 09E08959S01 65E08967S01 09E08953S01 09E08956S01 09E08956S01	Socket, 4P (CENTER / REAR - R SPEAKER) Socket, 2P (REAR - L SPEAKER) Fuse, 5A Jack, RCA 4P (LINE IN / FRONT PRE OUT VARIABLE) Jack, RCA 6P (FRONT / REAR / CENTER PRE OUT FIXED) Jack, RCA 6P (REAR PRE OUT VARIABLE / MAIN IN, CENTER PRE OUT VARIABLE / MAIN IN)

Symbol No.	Part No.	Description	Symbol No.	Part No.	Description
JK501	09E04290S01	Jack, Mic (SERIAL REMOTE IN)			
JK502	09E04290S01	Jack, Mic (SERIAL REMOTE OUT)			
JK503	09E08965S01	Jack, Mic (BUS LINE)			
JK504	09E08965S01	Jack, Mic (BUS LINE)			
JK505	09E08966S01	Jack, RCA 2P (VIDEO IN/VIDEO TV MONITOR OUT)			
LD401	48E08926S01	LED Display			
LD901	48E04216S01	LED, SLR - 34VC5F (RED)			
Q611	48E08113S01	Transistor, 2SC1846			
Q612	48E08113S01	Transistor, 2SC1846			
Q617	48E08114S01	Transistor, 2SC3182N			
Q618	48E08114S01	Transistor, 2SC3182N			
Q619	48E08115S01	Transistor, 2SA1265N			
Q620	48E08115S01	Transistor, 2SA1265N			
Q706	48E08113S01	Transistor, 2SC1846			
Q709	48E08114S01	Transistor, 2SC3182N			
Q710	48E08115S01	Transistor, 2SA1265N			
S601	40E08964S01	Switch, Push (SPEAKER CENTER/REAR)			
S411	40E08199S01	Switch, Tact SKHHDA (REAR VOLUME UP)			
S412	40E08199S01	Switch, Tact SKHHDA (REAR VOLUME DOWN)			
T801	25E08972S01	Power Transformer			
TH651	48E08116S01	Thermistor, 500ohm			
P001	30E08982S01	Line Cord			

Cabinet Assembly Parts List

NOTE : The parts without parts list are not supplied.

Symbol No.	Index	Part No.	Description	Symbol No.	Index	Part No.	Description
1	4-C	64E08973S01	Front Panel				
2	3-J	15E08976S01	Cabinet				
3	1-I	64E08974S01	Rear Panel				
8	3-B	61E08977S01	Display Glass A				
9	3-D	36E08140S02	Tact Button, 4				
10	2-D	36E08139S02	Tact Button, 3				
11	2-A	36B70885F07	Knob, Push				
12	2-D	03E08163S01	Screw, Countersink (M2.6×8)				
15	2-B	36A80694F01	Knob, Push Recout				
17	3-C	36E04386S01	Knob, Base Volume				
18	4-C	36E08142S01	Knob, Cap Volume				
19	3-B	36E08979S01	Volume Knob 17				
21		01E08147S01	Assy., Foot				
30	3-C	41E08157S01	Spring				
31	1-D	73E08980S01	Spacer				
32	5-I	75E04473S01	Cabinet Mat				
34		03E07923S01	Screw, Bind (M2.6×8)				
35		03E04479S02	Screw, Bind (M3×6)				
37		03E08160S01	Screw, W/Washer (M3×8)				
38		03E04477S04	Screw, Bind (M3×8)				
39		03E08161S01	Screw, W/Washer (M3×12)				
40	1-C	07E08154S01	Holder, Fuse				
41	4-A	03E08162S01	Screw, Bind (M3×6)				
42		03E04480S04	Screw, Bind (M4×10)				
43		03E07927S01	Screw, Bind (M4×6)				
46		04E08169S01	Washer, Flat (M4.6)				
47	3-C	29E08165S01	Snake Lug				
48	3-H	03E04480S02	Screw, Bind (M3×8)				
49	2-H	22E08993S01	Short Pin				
50	1-H	43E07929S01	Cord Stopper				
51	2-J	09E04499S01	Ground Terminal				
52		29E07915S01	Snake Lug				
53	2-J	03E07917S02	Screw, Bind (M3×6)				
60	2-B	61E08978S01	Display Glass B				
61	3-E	36E08141S01	Tact Button				
62	4-D	03E08981S01	Screw, Countersink (M3×6)				