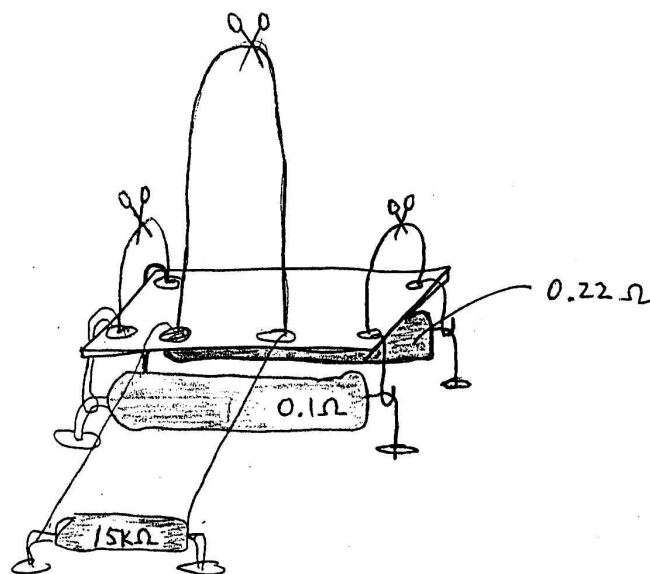


2/5/93

## MicroTube 100 Current Limiting - Piggy-back Boards

- \* Each channel gets its own piggyback board, marked "FRONT" & "REAR" for simplicity ("FRONT" board goes w/ the output device pair near the front panel, and vice versa).
- \* Locate the  $0.1\Omega/2W$  &  $0.22\Omega/3W$  resistors near the output device pair. Cut the 3 buss-wire loops as shown below, and mount the board in place using the four buss-wires going to the two big resistors.
- \* Bring the longer leads over to the  $15K\Omega/1/2W$  resistors & solder.



S.N. VT010830

ECD # 8856